

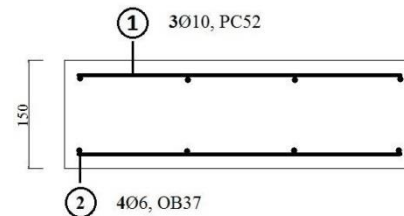
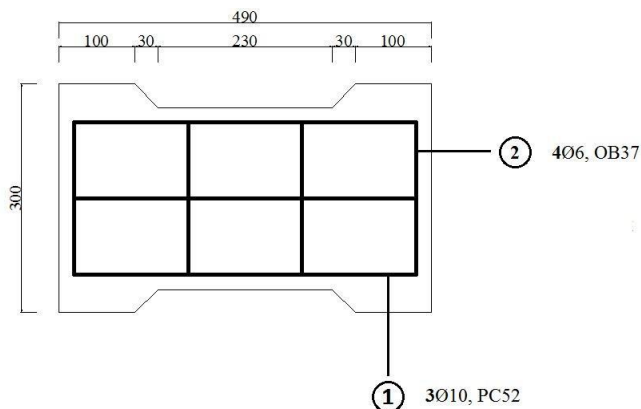


FISA TEHNICA CAPAC RIGOLA ARMATA

Capace rigole sunt realizate din doua straturi de beton **C30/37**, prin vibropresare avand in compozitie:

- ciment II A-S42,5R
- aggregate: 0-4; 4-8; 8-16
- aditiv plastifiant, aditiv anti eflorescent

Detalii capac rigola armata:



Extras de armatura					
Marca		L	Buc.	6	10
1	10	0.450	6		2.700
2	6	0.200	8	1.600	
Lungime tot				1.600	2.700
Kg/m				0.222	0.617
Kg/calitate				0.356	1.666
Total				2.022	

