

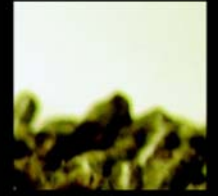



## Product survey Capacitive proximity sensors

DOL 40R series – diameter 30 mm	Type	Delay	Output	Form	Voltage	No.	
 <p>The DOL 40R capacitive sensor series is designed for general detection of feed, grain and solids.</p>	DOL 41R	-	Relay	Smooth	10-30V AC/DC	100672	
				Thread	90-250V AC	100671	
	DOL 43R	off-delay 0-4 hrs	Relay		Smooth	10-30V AC/DC	100772
				Thread	90-250V AC	100771	
	DOL 45R	off/on-delay 0-4 hrs	Relay	Smooth	10-30V AC/DC	100662	
				Thread	90-250V AC	100661	
				Thread	10-30V AC/DC	100762	
				Thread	90-250V AC	100761	
 <p>The ATEX versions are certified for use in environments in Category 1, Zone 20, where there is danger of explosion.</p>	DOL 41R ATEX	-	Relay	Smooth	10-30V AC/DC	100622	
					Smooth	90-250V AC	100621
	DOL 43R ATEX	Off-delay	Relay	Smooth	10-30V AC/DC	100612	
					Smooth	90-250V AC	100611
	DOL 45R ATEX	Off/on-delay	Relay	Smooth	10-30V AC/DC	100602	
					Smooth	90-250V AC	100601
 <p>DOL 45R T-sensor is part of the DOL 40R series but is especially designed for detection of feed and similar materials in pipe conveyor systems.</p>	DOL 45R-T	off/on-delay 0-4 hrs	Relay	Smooth	10-30V AC/DC	100682	
					Smooth	90-250V AC	100681



MAKING SENSE IN YOUR PRODUCTION







DOL 25 series – 18 & 30 mm	Type	Delay	Output	Form	Voltage	No.
 <p>DOL 25 is a new, complete sensor series, which covers all requirements concerning physical, electric and functional qualities.</p> <p>The DOL 25 types with trimmers are available in several variants so you can get the exact function required:</p> <ul style="list-style-type: none"> <li>• Without trimmer (0T)</li> <li>• with one trimmer (1T)</li> <li>• with two trimmers (2T)</li> </ul> <p>All types offer a new, active temperature compensation, which makes them 100 % temperature stable.</p>	DOL 25 0T	-	SCR NC	P-M18	20-250V AC	102139
			PNP NO & NC	P-M18	10-36 V DC	102099
				P-M18-PL	10-36 V DC	102147
				P-Ø18	10-36 V DC	102003
	DOL 25 1T	-	SCR NO	P-M18	20-250V AC	102134
				P-M30	20-250V AC	102230
			SCR NC	P-Ø18	20-250V AC	102042
				P-M30	20-250V AC	102234
			PNP NO & NC	P-M18	10-36 V DC	102098
				P-Ø18	10-36 V DC	102002
				P-M30	10-36 V DC	102194
				P-Ø30	10-36 V DC	102198
	DOL 25 2T	Off 0-10m	SCR NC	P-M30-PL	10-36 V DC	102242
				P-Ø18	20-250V AC	102041
			SCR NO	P-M30	20-250V AC	102233
				P-M30	20-250V AC	102229
			PNP NO & NC	P-M18	10-36 V DC	102097
				P-Ø18	10-36 V DC	102001

In addition to these standard types, DOL 25 is available in any combination of form, function and output.



## Accessories

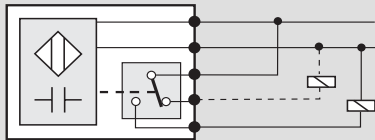
### Capacitive proximity sensors

DOL 40R Accessories	Description	No.
	<p>Plastic screwed gland for mounting of sensors in the DOL 40 series.</p> <p>The plastic gland can be mounted in a silo wall by means of an internal counter nut or directly from outside with the enclosed flange.</p>	140107
	<p>The fitting permits easy fitting on plastic tubes in tubing systems where the sensor detects the material through the plastic wall of the tube.</p> <p>The sensor is typically applied to stop a filling when a system is filled up. The fitting fits tubes in the diameter interval of 38 - 70 mm.</p>	140112
	<p>The adapter is a conic rubber sleeve, which can easily be placed on the DOL 40R sensor.</p> <p>The adapter is used where the DOL 40R is to replace a DOL 16R/21R/33R mounted in a PG 36 or an equivalent unit with a larger diameter than the DOL 40R.</p>	140113
DOL 25 Accessories		
	<p>Gland for mounting of the DOL 25 sensor.</p> <p>For mounting of the gland a hole of minimum 28 mm and maximum 31 mm is required.</p>	140121



## Connection diagrams Capacitive proximity sensors

### DOL 40R relay output



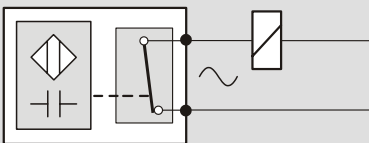
### Description

The power supply is connected to the blue and brown wire.  
The load is connected in series with the relay contact of the sensor.

**STOP** by activating the sensor, use the black wires 1 and 3 (NC).

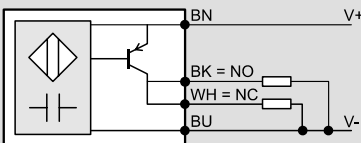
**START** by activating the sensor, use the black wires 1 and 4 (NO).

### DOL 25 SCR thyristor output



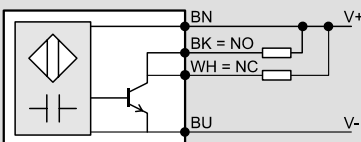
The load is connected in series with the SCR contact of the sensor.  
Max. load = 300 mA

### DOL 25 PNP transistor output



The load is connected to the NO or NC output on the sensor.  
Max. load = 500 mA

### DOL 25 NPN transistor output



The load is connected to the NO or NC output on the sensor.  
Max. load = 500 mA