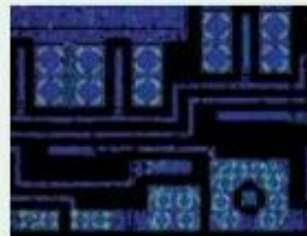


## Specifications

**Observation image** Erect image  
**Measuring accuracy (at 20°C)** XY-axis : (2,2+0,02L) μm  
 L : Measuring length (mm) when not loaded, JIS B7153  
**Indication accuracy (at 20°C)** Z-axis : (5+0,04L) μm  
 L : Measuring length (mm)  
**Floating function** X and Y axes with Quick-release mechanism  
**Focusing method** Manual (coarse focusing : 10 mm/rev.,  
 fine focusing : 0,1 mm/rev.)  
**Optical tube** Siedentoph type (pupil distance adjustment : 51 - 76 mm), 1X tube lens, Binocular tube (depression : 30°), Reticle projection method, with TV mount, Optical path ratio (eyepiece/TV mount : 50/50)  
**Eyepiece lens** 10X (field No.: 24mm)  
 Optional : 15X, 20X  
**Turret (optional)** Manual or power  
**Objective lens (optional)** M / BD Plan Apo objective from 1X to 100X  
**Transmitted illumination optional** Light source : Halogen bulb (12V, 50W)  
 Optical system : Telecentric illumination with adjustable aperture diaphragms  
 Functions : Light intensity adjustable, Non-stepped brightness adjustment

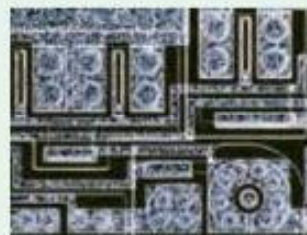
**Surface illumination optional** Light source : Optional halogen illumination unit (fiber-optic cold light illumination)  
 Optical system : Koehler illumination with adjustable aperture diaphragms  
 Functions : Light intensity adjustable, Non-stepped brightness adjustment  
**Display unit resolution** 0.001mm / 0.0005mm / 0.0001mm / 0.0001" / 0.00005" / 0.00001"  
 No. of axis : 2 axes or 3 axes  
 Functions : Zero-setting, Direction switching, Data output (via RS-232C interface)  
**Power supply** 220/240V AC, 50/60Hz



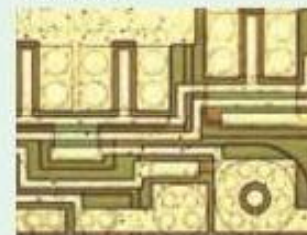
Polarized light



Differential interference contrast



Dark field



Bright field