



CATALOG PLACUTE AMOVIBILE

Va prezentam **cel mai mare catalog de placute amovibile**, realizat de o firma din Romania. Avem mai mult de 500 de modele de placute standard in catalog. Produsele marcate in tabel cu semnul negru sunt in stoc la furnizor, pot fi livrate in maxim 7 zile. Placutele sunt ambalate in cutii de cate 10 bucati.

Merita sa studiatii acest catalog, pentru ca sigur veti gasi solutia potrivita nevoilor dumneavoastra!

Alaturi de prezentarea fiecarui tip de placute, am realizat o descriere tehnica a duritatii fiecarei categorii. Alegerea acestora se face in functie de tipul de material prelucrat. Atentie, cu cat duritatea placutei creste, cu atat scade rezistenta sa la rupere!!!!

Cereti-ne o cotation de pret, fara sa omiteti sa specificati cantitatea dorita, pentru ca aceasta poate influenta semnificativ pretul produselor. Daca nu ati gasit solutia, contactati consultantii nostri si ei va vor ajuta! In definitiv, ideea este cea care da nastere banilor, si nu banii dau nastere unei idei!

In speranta ca v-am fost de folos, va dorim spor la bani si....odihna placuta! Acum nu trebuie sa mai pierdeti timpul cautand si analizand!

Definitie granulatie	Dimensiunea medie a granulelor de carbura
Granulatie Nano	<0.2µm
Granulatie Ultrafina	0.2<0.5µm
Granulatie Submicron	0.5<0.8µm
Granulatie Standard	0.8<1.3µm
Granulatie Medie	1.3<2.5µm
Granulatie Grosiera	2.5<6.0µm
Granulatie Extragrosiera	>6.0µm

Granulatie	Liant	Densitate	Duritate			Rezistenta la rupere
			Vickers HV10	Vickers HV30	Rockwell HRA	
Denumire	%	gr/cm3	HV10	HV30	HRA	MPa*m ^{1/2}
Granulatie Nano						
K-UMG04	2.2	15.30	2500	2400	96.0	5.4
Granulatie Ultrafina						
K-SMG02	2.4	15.25	2300	2200	95.2	5.7
Granulatie Submicron cu Crom						
K-KCR08	4.2	15.20	1920	1885	93.4	8.7
Granulatie Submicron						
K-HC10	10	14.45	1570	1550	91.6	9.2
Granulatie Standard						
K-HC05	4	15.15	1730	1700	92.5	8.7
Otel Rapid						
HSS 18%			850	64		



K-HC10

Este o categorie noua ideala pentru lemn de esenta moale si lemn esenta tare. Nu este recomandat pentru prelucrare de PAL, MDF, HDF. Aceasta placuta are duritate mai mica decat K-HC05, dar creste cu 30 % rezistenta la rupere. Datorita faptului ca are duritate mai mica decat K-HC05, are cel mai mic pret de vanzare.

K-HC-05

Acesta categorie este cea mai folosita pentru placute amovibile si blancuri pentru profilat. Are rezultate bune pe toata gama de materiale folosite in industria lemnului din zilele noastre si stabileste un standard pentru performanta si pret.

K-KCR08

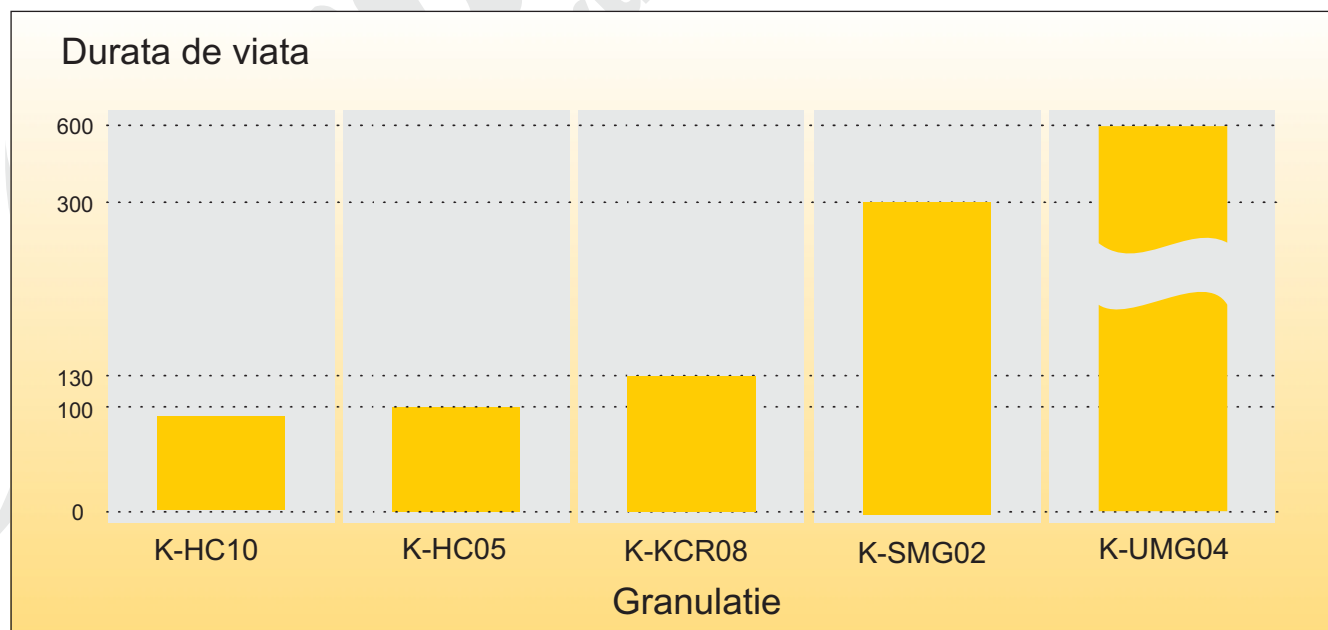
Este categoria cea mai noua de carbura metalica. Este o placuta Submicron cu mult crom in compozitie si are un adeziv de lipire special. Datorita acestor lucruri creste rezistenta la coroziune, oxidare . Muchia taietoare este mai bine definita datorita granulatului fine(0.5-0.8 micron). Duritatea placutei este mai mare ca la K-HC05, dar fara a scadea rezistenta la rupere. Placuta K-KCR08 rezista mai mult cu 30 % fata de K-HC05 si o inlocuieste cu succes pe aceasta.

K-SMG02

Aceasta structura are granulatia ultrafina (0.2-0.5 micron). Datorita acestui fapt carbura metalica este mai dura, dar casanta, crescand viata sculei cu 200%, in comparatie cu K-HC05. Este folosit la prelucrarea MDF si HDF, rezistenta la rupere scade fata de K-KCR08.

UMG04

La aceasta carbura, extrem de dura, se potriveste zicala " diamantele sunt pentru totdeauna". Testele au aratat ca a crescut durata de viata a sculei de 6 ori in comparatie cu K-HC05. Pentru a prelucra materiale foarte dure, aceasta categorie este o alternativa economica la sculele diamantate, pierderea financiara fiind mai mica in cazul in care se sparge o placuta. Rezistenta la rupere este cea mai mica, lucru care impune o atentie mare, atunci cand este folosita.





Granulatie	Lemn esenta moale	Lemn esenta tare	P.A.L	MDF	HDF	Plastic
------------	-------------------	------------------	-------	-----	-----	---------

Granulatie Standard

K-HC05						
--------	--	--	--	--	--	--

Granulatie Submicron

K-HC10						
--------	--	--	--	--	--	--

Granulatie Submicron cu Crom

K-KCR08						
---------	--	--	--	--	--	--

Granulatie Ultrafina

K-SMG02						
---------	--	--	--	--	--	--

Granulatie Nano

K-UMG04						
---------	--	--	--	--	--	--

Bun

Excelent

Ascutirea placutelor amovibile va produce un praf care poate contine ingrediente periculoase.

Expunerea la praful provenit de la ascutirea produselor din acest catalog poate cauza: iritatii la nivelul nasului, gatului, pielii si ochilor sau ingreunarea respiratiei pe termen limitat sau permanent. Respiratia ingreunata devenita permanenta poate conduce la invaliditate sau deces.

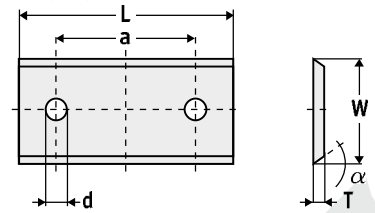
Vaporii proveniti de la ascutire in mediu ud pot contine acest praf. Evitati inhalarea vaporilor sau a prafului si contactul prelungit al pielii cu acestea.

Folositi o ventilatie adecvata si echipamente de protectie atunci cand ascutiti scule cu placute din carbura solida. Spalati mainile temeinic dupa manipulare.

Aruncarea deseurilor trebuie facuta in conformitate cu legea nr 211/2011 republicata in 2014



35°



	L mm	W mm	T mm	a mm	° α	K-HC05	K-HC 10	K-KCR08	K-MG06	K-SMG02	K-UMG04	K-HC27
	7,5	12,0	1,5		35	75122		175122	375122			
	7,65	12,0	1,5		35	76122						
	8,6	12,0	1,5		35	86122						
	9,0	12,0	1,5		35	9122						
	9,6	12,0	1,5		35	96122		196122	396122	496122		
	10,5	12,0	1,5		35	105122		1105122				
	11,0	12,0	1,5		35	11122		111122				
	11,6	12,0	1,5		35	116122						
	13,0	12,0	1,5		35	13122		113122				
	13,6	12,0	1,5		35	136122						
	14,6	12,0	1,5		35	146122						
	15,0	12,0	1,5		35	15122		115122	315122	415122		
	15,7	12,0	1,5		35	157122						
	16,0	12,0	1,5		35	16122						
	17,0	12,0	1,5		35	17122		117122				
	18,0	12,0	1,5		35	18122						
19,0	12,0	1,5		35	19122							
20,0	12,0	1,5		35	20122	1020122	121122	320122	420122	220122		
25,0	12,0	1,5		35	25122		225122					

	L mm	W mm	T mm	a mm	° α	K-HC05	K-HC 10	K-KCR08	K-MG06	K-SMG02	K-UMG04	K-HC27
	25,0	12,0	1,5	14,0	35	125122		325122				
	30,0	12,0	1,5	14,0	35	30122	1030122	131122	330122	430122	230122	
	40,0	12,0	1,5	26,0	35	40122	1040122	140122	340122	440122	240122	
	50,0	12,0	1,5	26,0	35	50122	1050122	150122	350122	450122	250122	
	60,0	12,0	1,5	26,0	35	60122	1060122	160122	360122	460122		

	L mm	W mm	T mm	a mm	° α	K-HC05	MG06	SMG02	UMG04	MG18	HC27	KCR08
	80,0	13,0	2,2	60,0	35							80132
	100,0	13,0	2,2	60,0	35							100132
	120,0	13,0	2,2	60,0	35							120132
	130,0	13,0	2,2	60,0	35						130132	

	L mm	W mm	T mm	a mm	° α	K-HC05	K-MG06	K-SMG02	K-UMG04	MG 18	K-HC27	K-KCR08
	7,5	9,0	1,5		35	7592						
	12,0	9,0	1,5		35	1292						
	14,6	9,0	1,5		35	14692						
	20,0	9,0	1,5		35	2092	32092					12092

	L mm	W mm	T mm	a mm	° α	K-HC05	K-MG06	K-SMG02	K-UMG04	MG 18	K-HC27	K-KCR08
	30,0	9,0	1,5	14,0	35	3092	33092					13092
	40,0	9,0	1,5	26,0	35	4092						
	50,0	9,0	1,5	26,0	35	5092	35092					15092

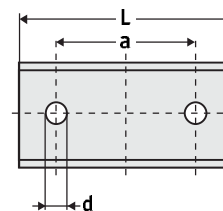
	L mm	W mm	T mm	a mm	° α	K-HC05	K-MG06	K-SMG02	K-UMG04	MG 18	K-HC27	K-KCR08
	30,0	12,0	2,5	14,0	35	301225				311225		

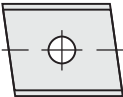
*	L mm	W mm	T mm	a mm	° α	K-HC05	K-MG06	K-SMG02	K-UMG04	MG 18	K-HC27	K-KCR08
	20,0	12,0	1,5		35							121122E
	30,0	12,0	1,5	14,0	35							131122E
	50,0	12,0	1,5	26,0	35							150122E

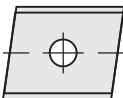
* La dimensiunea de 20x12x1.5, placuta are o singura gaura




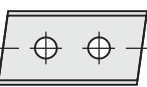
35°





	L mm	W mm	T mm	a mm	° α	K-HC05	K-KCR08	K-MG06	K-SMG02	K-UMG04			
 links 5°	20,0	12,0	1,5		35	20127	120127	320127	420127	220127			

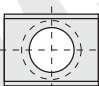
	L mm	W mm	T mm	a mm	° α	K-HC05	K-KCR08	K-MG06	K-SMG02	K-UMG04			
 rechts 5°	20,0	12,0	1,5		35	20128	120128	320128	420128	220128			


	L mm	W mm	T mm	a mm	° α	K-HC05	K-KCR08	K-MG06	K-SMG02	K-UMG04			
 links 5°	30,0	12,0	1,5	14	35	30127	130127	330127	430127	230127			
	40,0	12,0	1,5	26	35	40127	140127	340127	440127				
	50,0	12,0	1,5	26	35	50127	150127	350127	450127	250127			

	L mm	W mm	T mm	a mm	° α	K-HC05	K-KCR08	K-MG06	K-SMG02	K-UMG04			
 rechts 5°	30,0	12,0	1,5	14	35	30128	130128	330128	430128	230128			
	40,0	12,0	1,5	26	35	40128	140128	340128	440128				
	50,0	12,0	1,5	26	35	50128	150128	350128	450128	250128			

	L mm	W mm	T mm	a mm	° α	K-HC05	K-KCR08	K-MG06	K-SMG02	K-UMG04			
 links	30,0	12,0	1,5	14	35	30125	130125	330125					
	50,0	12,0	1,5	26	35	50125	150125	350125					

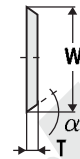
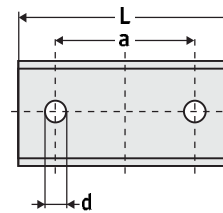
	L mm	W mm	T mm	a mm	° α	K-HC05	K-KCR08	K-MG06	K-SMG02	K-UMG04			
 rechts	30,0	12,0	1,5	14	35	30126	130126	330126					
	50,0	12,0	1,5	26	35	50126	150126	350126					

	L mm	W mm	T mm	a mm	° α	HC 20	K-KCR08	K-MG06	K-SMG02	K-UMG04			
	20,0	14,3	2,5		35	201432			4201432				

	L mm	W mm	T mm	a mm	° α	K-HC05	K-KCR08	K-MG06	K-SMG02	K-UMG04			
	30,0	12,0	1,5	16	35	300122							



35°



	L mm	W mm	T mm	a mm	° α	HC 20	K-KCR08	K-MG06	K-SMG02	K-UMG04				
	44,5	15,0	1,5	25,0	35	445152								

	L mm	W mm	T mm	a mm	° α	K-HC05	K-KCR08	K-MG06	K-SMG02	K-UMG04				
	19,5	12,0	1,5		35	20121	120121	320121						

	L mm	W mm	T mm	a mm	° α	K-HC05	K-KCR08	K-MG06	K-SMG02	K-UMG04				
	19,5	12,0	1,5		35	20123	120123	320123						

	L mm	W mm	T mm	a mm	° α	K-HC05	K-KCR08	K-MG06	K-SMG02	K-UMG04				
	28,3	12,0	1,5	14,0	35	283127								
	48,3	12,0	1,5	26,0	35	483127								

	L mm	W mm	T mm	a mm	° α	K-HC05	K-KCR08	K-MG06	K-SMG02	K-UMG04				
	31,5	9,0	1,5	14,0	35	315915								

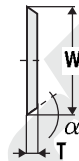
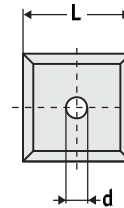
	L mm	W mm	T mm	d mm	° α	HC 20	K-KCR08	K-MG06	K-SMG02	K-UMG04				
	15,0	14,3	2,5	6,3	35	15143257								

	L mm	W mm	T mm	d mm	° α	HC 20	K-KCR08	K-MG06	K-SMG02	K-UMG04				
	15,0	14,3	2,5	6,3	35	1543258								

	L mm	W mm	T mm	d mm	° α	K-HC05	K-KCR08	K-MG06	K-SMG02	K-UMG04				
	13,3	5,5	1,1		30	133552								
	15,8	5,5	1,1		30	158552								
	18,3	5,5	1,1		30	183552								

	L mm	W mm	T mm	d mm	° α	K-HC05	K-KCR08	K-MG06	K-SMG02	K-UMG04				
	17,5	7,0	1,5	3,3	35		17574							
	29,5	7,0	1,5	3,3	35		3174							

	L mm	W mm	T mm	d mm	° α	K-HC05	K-KCR08	K-MG06	K-SMG02	K-UMG04				
	11,0	11,0	4,0			11114								



	L mm	W mm	T mm	d mm	° α	HC 35	K-HC05	HC 20	K-KC08	MG 18	K-MG06	K-SMG02	
	10,5	10,5	1,5	4,0	35				1105105	105105			
	13,0	13,0	2,5	6,1	30					13254			
	13,4	13,4	1,5	6,35	30	134154	■						
	13,6	13,6	2,0	6,4	45	136204							
	14,0	14,0	1,2	8,5	30	14124	■						
	14,0	14,0	1,7	8,5	22	14174							
	14,0	14,0	1,7	8,5	30	114174							
	14,0	14,0	2,0	6,4	30	14204	■	814204	■	114214	■	314204	414204
	14,0	14,0	2,0	6,4	30					614124		614205	
	14,0	14,0	2,0	5,5	30	514204							
	14,3	14,3	2,5	6,3	35				143254				
	14,6	14,6	2,5	6,4	30				1146254		146254		
15,0	14,3	2,5	6,3	35				1514325					
15,0	15,0	2,5	6,4	30						15254			

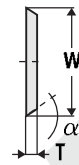
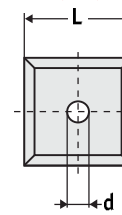
	L mm	W mm	T mm	d mm	° α	HC 35	K-HC05	HC 20	K-KC08	MG 18	K-MG06	K-SMG02
	9,0	9,0	1,5						994			
	10,5	10,5	1,5	4,0	35		105104		1105104			
	12,0	12,0	1,5	4,0	35		12124	■	112214		312124	412124
	15,0	15,0	2,0	4,0	35				151504			
	17,0	17,0	2,0	3,0	35		117204					
	17,0	17,0	2,0	4,0	35		17204		217204			
	19,0	19,0	2,0	4,0	35		19204		119204			

	L mm	W mm	T mm	d mm	° α	HC 35	K-HC05	HC 20	K-KC08	MG 18	K-MG06	K-SMG02
	14,0	14,0	2,00	8,6				114204				
	14,0	14,0	2,50	8,3				114254				
	14,0	14,0	3,00	8,3				114304				
	18,0	18,0	1,95	10,4				181954	■			
	18,0	18,0	2,45	10,4				182454	■			
	18,0	18,0	2,95	10,4				182954				
	18,0	18,0	3,70	10,4				18374				
	18,0	18,0	4,00	10,4				18404				

	L mm	W mm	T mm	d mm	° α	HC 35	K-HC05	HC 20	K-KC08	MG 18	K-MG06	K-SMG02
	22,0	19,0	2,0	6,5	30					220201		
	22,86	19,86	2,5	6,5	30			220259				

	L mm	W mm	T mm	d mm	° α	HC 35	K-HC05	HC 20	K-KC08	MG 18	K-MG06	K-SMG02
 dreapta sus lemnul deasupra stanga jos lemnul dedesubt	22,0	19,0	2,0	6,5	30					220207		
	22,0	19,0	2,0	6,5	30					220208		

	L mm	W mm	T mm	d mm	° α	HC 35	K-HC05	HC 20	K-KC08	MG 18	K-MG06	K-SMG02
	14,0	14,0	2,0	6,5	30		214204					
	16,0	16,0	3,0	6,5	30		16163					



	L mm	W mm	T mm	d mm	° α	HC 35	MG 18	HC 20	K-KCRO8	K-MG06	K-SMG02	K-HC05
	14,0	14,0	2,0	6,4	30	14244						
	14,6	14,6	2,5	6,4	30		146256					

	L mm	W mm	T mm	d mm	° α	HC 35	MG 18	HC 20	K-KCRO8	K-MG06	K-SMG02	K-HC05
	14,0	14,0	2,0	6,3	35			1114214				
	14,3	14,3	2,5	6,3	35			1143254				

	L mm	W mm	T mm	d mm	° α	HC 35	MG 18	HC 20	K-KCRO8	K-MG06	K-SMG02	K-HC05
	14,0	14,0	2,0	6,3	35			214214				
	14,3	14,3	2,5	6,3	35			2143254				

	L mm	W mm	T mm	d mm	° α	HC 35	MG 18	HC 20	K-KCRO8	K-MG06	K-SMG02	K-HC05
	14,0	14,0	1,2	8,5	30	114124						

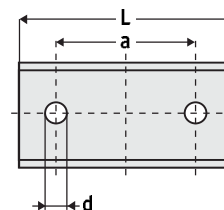
	L mm	W mm	T mm	d mm	° α	HC 35	MG 18	HC 20	K-KCRO8	K-MG06	K-SMG02	K-HC05
	21,0	21,0	5,5	7,4	40		212155					

	L mm	W mm	T mm	d mm	° α	HC 35	MG 18	HC 20	K-KCRO8	K-MG06	K-SMG02	K-HC05
	30,0	21,0	5,5	7,4	40		301255					

	L mm	W mm	T mm	d mm	° α	HC 35	MG 18	HC 20	K-KCRO8	K-MG06	K-SMG02	K-HC05
	40,0	21,0	5,5	7,4	40		401255					

	L mm	W mm	T mm	d mm	° α	HC 35	MG 18	HC 20	K-KCRO8	K-MG06	K-SMG02	K-HC05
	R=100	14,0	14,0	2,0	6,4	30	14224					
	R=150	14,6	14,6	2,5	6,4	30		246254				
	R=115	15,0	15,0	2,5	6,4	30		815204				
	R=150	15,0	15,0	2,5	6,4	30		315204				
	R=190	15,0	15,0	2,5	6,4	40		1115204				
	R=50	15,0	15,0	2,5	6,4	30		515204				

	L mm	W mm	T mm	d mm	° α	HC 35	MG 18	HC 20	K-KCRO8	K-MG06	K-SMG02	K-HC05
	R=150	13,8	13,8	2,5	6,4	30		138254				
	R=100	14,0	14,0	2,0	6,4	30	114234	14234				
	R=150	14,6	14,6	2,5	6,4	30		146255				
	R=150	15,0	15,0	2,5	6,4	30		415204				
	R=50	15,0	15,0	2,5	6,4	30		215204				
	R=115	15,0	15,0	2,5	6,4	30		115204				
	R=200	15,0	15,0	2,5	6,4	40		1015204				



	L mm	W mm	T mm	a mm	° α	K-HC05	K-KCR08	K-MG06	K-SMG02	K-UMG04	MG 18
	9,0	12,0	1,5		35	9124					
	10,0	12,0	1,5		35	10124					
	19,5	7,0	1,5		35	2074					
	19,5	7,5	1,5		35	20754					
	19,5	8,0	1,5		35	2084	12084	32084			
	19,5	9,0	1,5		35	2094	12094	32094			
	19,5	10,0	1,5		35	20104	121104	320104			
	19,5	11,0	1,5		35	20114	120114				
	19,5	12,0	1,5		35	20124	120124	320124	420124	220124	

	L mm	W mm	T mm	a mm	° α	K-HC05	K-KCR08	K-MG06	K-SMG02	K-UMG04	MG 18
	29,5	7,0	1,5	14	35	3074					
	29,5	7,5	1,5	14	35	30754					
	29,5	8,0	1,5	14	35	3084	13084	33084			
	29,5	9,0	1,5	14	35	3094	13094	33094			
	29,5	10,0	1,5	14	35	30104	130104	330104			
	29,5	11,0	1,5	14	35	30114	130114				
	29,5	12,0	1,5	14	35	30124	130124	330124	430124	230124	

	L mm	W mm	T mm	a mm	° α	K-HC05	K-KCR08	K-MG06	K-SMG02	K-UMG04	MG 18
	39,5	9,0	1,5	26	35	4094	14094				
	39,5	12,0	1,5	26	35	40124	140124	340124	440124		
	49,5	8,0	1,5	26	35	5084	15089	35084			
	49,5	9,0	1,5	26	35	5094	15094	35094			
	49,5	10,0	1,5	26	35	50104	250104	350104			
	49,5	11,0	1,5	26	35	50114	150114	350114			
	49,5	12,0	1,5	26	35	50124	150124	350124	450124	250124	
	59,5	12,0	1,5	26	35	60124	160124	360124	460124		

	L mm	W mm	T mm	a mm	° α	K-HC05	K-KCR08	K-MG06	K-SMG02	K-UMG04	MG 18
	50,0	9,0	1,5	37	35	5093	15093				
	50,0	12,0	1,7	37	35	50123	250123	150123	450123		

	L mm	W mm	T mm	a mm	° α	K-HC05	K-KCR08	K-MG06	K-SMG02	K-UMG04	MG 18
	16,0	7,0	1,5	7	35			1672			
	23,0	7,0	1,5	14	35			2372			
	28,0	7,0	1,5	14	35			2872			

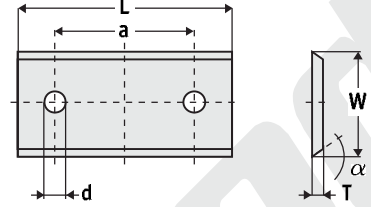
	L mm	W mm	T mm	a mm	° α	K-HC05	K-KCR08	K-MG06	K-SMG02	K-UMG04	MG 18
	16,0	7,0	1,5	7	35			1673			
	23,0	7,0	1,5	14	35			2373			

	L mm	W mm	T mm	a mm	° α	K-HC05	K-KCR08	K-MG06	K-SMG02	K-UMG04	MG 18
	16,0	7,0	1,5	7	35			1674			
	23,0	7,0	1,5	14	35			2374			

	L mm	W mm	T mm	a mm	° α	K-HC05	K-KCR08	K-MG06	K-SMG02	K-UMG04	MG 18
	23,0	7,0	1,5	14	35			2874			



45°



	L mm	W mm	T mm	a mm	° α	MG18			MG 18 polished		HE40 polished			
	7,5	12,0	1,5		45	675122								
	9,6	12,0	1,5		45	696122			696125		996122			
	11,6	12,0	1,5		45	6116122								
	15,0	12,0	1,5		45	615122			615125		915122			
	20,0	12,0	1,5		45	620122			620125		920122			
	24,7	12,0	1,5		45	6125122								

	L mm	W mm	T mm	a mm	° α	MG18			MG 18 polished		HE40 polished			
	24,7	12,0	1,5	14	45	625122								
	30,0	12,0	1,5	14	45	630122			630125		930122			
	40,0	12,0	1,5	14	45	640122			640125		940122			
	50,0	12,0	1,5	14	45	650122			650125		950122			
	60,0	12,0	1,5	14	45	660122			660125		960122			

	L mm	W mm	T mm	a mm	° α	MG18			MG 18 polished		HE40 polished			
	80,0	13,0	2,2	60	45				680135		980132			

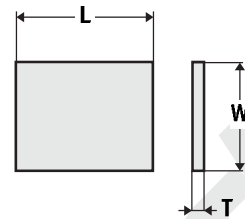
	L mm	W mm	T mm	a mm	° α	MG18			MG 18 polished		HE40 polished			
	12,0	12,0	1,5		45	612124			612125		912124			

	L mm	W mm	T mm	a mm	° α	MG18			MG 18 polished		HE40 polished			
	14,0	14,0	2,0		45	614204					914204			

	L mm	W mm	T mm	a mm	° α	MG18			MG 18 polished		HE40 polished			
	45,0	12,0	1,5	26	45	645124								



35°

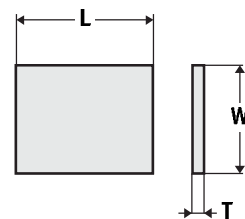


	L mm	W mm	T mm	° α	K-HC05	K-KCR08	K-MG06
	20,0	4,1	1,1	35	220414		520414
	20,0	5,5	1,1	35	220554		520554
	25,0	5,5	1,1	35	225554		525554
	30,0	5,5	1,1	35	230554		530554
	40,0	5,5	1,1	35	240554		540554
	50,0	5,5	1,1	35	250554		550554

	L mm	W mm	T mm	° α	K-HC05	K-KCR08	K-MG06
	12,0	5,5	1,1	35	12552		
	20,0	5,5	1,1	35	20552		420552
	30,0	5,5	1,1	35	30552		430552
	40,0	5,5	1,1	35	40552		
	50,0	5,5	1,1	35	50552		450552
	60,0	5,5	1,1	35	60552		

Pentru sistem VersoFix	L mm	W mm	T mm	° α	K-HC05	K-KCR08	K-MG06
	20,0	5,5	1,1	35		121554	
	30,0	6,5	1,1	35		130654	
	50,0	6,5	1,1	35		150654	
	20,0	10,0	1,5	35		120104	
	30,0	10,0	1,5	35		130104	
	50,0	10,0	1,5	35		150104	

	L mm	W mm	T mm	a mm	° α	K-HC05	K-KCR08	K-MG06
	20,0	12,0	1,5		35		920124	
	30,0	12,0	1,5	14,0	35		930124	
	50,0	12,0	1,5	20,0	35		950124	

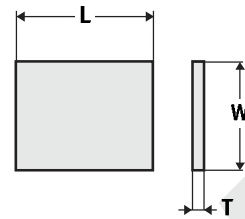


	L mm	W mm	T mm	° α	HC 21	K-HC27	HC 35
	56,0	5,5	1,1	35			560559
	60,0	5,5	1,1	35			600559
	75,5	5,5	1,1	35			755559
	78,0	5,5	1,1	35			780559
	80,5	5,9	1,1	40			805559
	82,0	5,5	1,2	35			820559
	92,0	5,5	1,1	35			920559
	102,0	5,5	1,1	35			102559

	L mm	W mm	T mm	° α	HC 21	K-HC27	HC 35
	63,6	12,0	1,1	46		631211	



40°



Pentru sistemul Leitz	L mm	W mm	T mm	a mm	° α	MG18	K-HC05												
	7,7	8,0	1,5		40	77152	77153												
	9,7	8,0	1,5		40	97152	97153												
	11,7	8,0	1,5		40	117152	117153												
	14,7	8,0	1,5		40	147152	147153												
	19,7	8,0	1,5		40	197152	197153												
	24,7	8,0	1,5		40	247152	247153												
	30,0	8,0	1,5		40	308152	308153												
	35,0	8,0	1,5		40	358152	358153												
	40,0	8,0	1,5		40	408152	408153												
	50,0	8,0	1,5		40	508152	508153												
	60,0	8,0	1,5		40	608152	608153												
	70,0	8,0	1,5		40	708152	708153												
	80,0	8,0	1,5		40	808152	808153												
	100,0	8,0	1,5		40	100152	100153												
120,0	8,0	1,5		40	120152	120153													

Pentru sistemul Oertli	L mm	W mm	T mm	a mm	° α	MG18	K-HC05											
	12,0	12,0	1,5		40		212124											

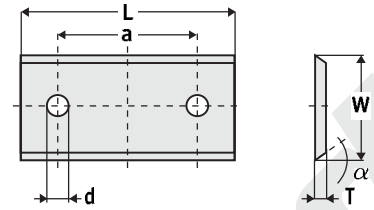
Pentru sistemul Oertli	L mm	W mm	T mm	a mm	° α	MG18	K-HC05												
	9,0	8,0	1,5		40	982													
	10,0	8,0	1,5		40	1082													
	11,0	8,0	1,5		40	1182													
	12,0	8,0	1,5		40	1282													
	15,0	8,0	1,5		40	1582													
	20,0	8,0	1,5		40	2082													
	28,0	8,0	1,5		40	2882													

Pentru sistemul Oertli	L mm	W mm	T mm	a mm	° α	MG18	K-HC05											
	32,0	8,0	1,5		40	3282												

Pentru sistemul Oertli	L mm	W mm	T mm	a mm	° α	MG18	K-HC05											
	40,0	8,0	1,5		40	4082												
	50,0	8,0	1,5		40	5082												
	60,0	8,0	1,5		40	6082												
	80,0	8,0	1,5		40	8082												
	100,0	8,0	1,5		40	10082												

	L mm	W mm	T mm	a mm	° α	MG18	K-HC05											
	30,0	8,0	1,5		40		308158											
	35,0	8,0	1,5		40		358158											

	L mm	W mm	T mm	a mm	° α	MG18	K-HC05											
	30,0	8,0	1,5		40		308157											
	35,0	8,0	1,5		40		358157											



	L mm	W mm	T mm	a mm	$^\circ$ α	K-HC05	MG 18	K-MG06							
	15,0	15,0	2,0		30		15154								

	L mm	W mm	T mm	a mm	$^\circ$ α	K-HC05	MG 18	K-MG06							
	15,0	15,0	2,0		30		115154								

	L mm	W mm	T mm	a mm	$^\circ$ α	K-HC05	MG 18	K-MG06							
	20,0	12,0	1,5		35	820122									

	L mm	W mm	T mm	a mm	$^\circ$ α	K-HC05	MG 18	K-MG06							
	30,0	12,0	1,5	14	35	830122									
	50,0	12,0	1,5	26	35	850122									

	L mm	W mm	T mm	a mm	$^\circ$ α	K-HC05	MG 18	K-MG06							
	20,0	12,0	1,5		35	20129									
	24,0	12,0	1,5		35	24129									
	24,7	12,0	1,5		40	247129									

	L mm	W mm	T mm	a mm	$^\circ$ α	K-HC05	MG 18	K-MG06							
	30,0	12,0	1,5	14	35	30129									
	40,0	12,0	1,5	26	35	40129									
	50,0	12,0	1,5	26	35	50129									

	L mm	W mm	T mm	a mm	$^\circ$ α	K-HC05	MG 18	K-MG06							
	11,0	7,0	5,1	4				110401							



	L mm	W mm	T mm	d mm	HC 20	HC 35	K-HC27	MG 18					
	18,0	6,0	3,5		18635								

	L mm	W mm	T mm	d mm	HC 20	HC 35	K-HC27	MG 18					
	19,0	8,0	4,0		11884								
	19,0	8,0	5,0		1884								

	L mm	W mm	T mm	d mm	HC 20	HC 35	K-HC27	MG 18					
	33,5			3,0		33525							

	L mm	W mm	T mm	d mm	HC 20	HC 35	K-HC27	MG 18					
	34,0	16,0	3,2	6,7		163432							
	34,0	16,0	4,0	6,7		16344							
	34,0	16,0	5,0	6,7		16345							

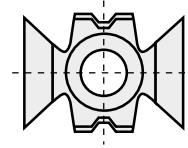
	L mm	W mm	T mm	d mm	HC 20	HC 35	K-HC27	MG 18					
	25,0	5,0	7,1		12550								
	25,0	5,0	7,1		22550								

	L mm	W mm	T mm	d mm	HC 20	HC 35	K-HC27	MG 18					
	25,0	4,6	5,4		25465								

	L mm	W mm	T mm	d mm	HC 20	HC 35	K-HC27	MG 18					
	30,0	22,5	3,0	6,0	130223								
	55,0	25,0	3,0	6,0	155253								

	L mm	W mm	T mm	d mm	HC 20	HC 35	K-HC27	MG 18					
	30,0	22,5	3,0	6,0	230223								
	55,0	25,0	3,0	6,0	255253								

	L mm	W mm	T mm	d mm	HC 20	HC 35	K-HC27	MG 18					
	24,5	13,0	3,0	7,7				245133					
	24,5	13,0	4,0	7,7				245134					
	24,5	13,0	5,0	7,7				245135					



	L mm	W mm	T mm	HC 20																
		16,0	22,0	5,0	162210														R=1,0	
		16,0	22,0	5,0	162215															R=1,5
		16,0	22,0	5,0	162220															R=2,0
		16,0	22,0	5,0	162225															R=2,5
		16,0	22,0	5,0	162230															R=3,0
		16,0	22,0	5,0	162240															R=4,0
		16,0	22,0	5,0	162250															R=5,0
		16,0	22,0	5,0	162260															R=6,0
		16,0	22,0	5,0	162245															45° Fase

	L mm	W mm	T mm	HC 20																	
		15,0	22,3	9,0	223159	K 12 / 0													R3		
		15,0	20,0	7,3	200159	K 12 / 3														R2	
		15,0	18,3	7,3	200157	K 12 / 3														R2F	
		15,0	20,0	7,0	201157	K 12 / 4														R1,5	
		15,0	22,3	10,0	223151	K 12 / 5														R3F	
		15,0	22,3	7,3	223157	K 13 / 0														Nut5	
		15,0	22,3	9,0	223158	K 13 / 1														Nut7	
				15,0	20,0	8,0	200158	K 11 / 0													45°
				15,0	17,5	8,0	175158	K 11 / 1													60°
				15,0	20,0	9,0	201159	K 12 / 1													R3
				15,0	22,3	7,3	223156	K 16 / 0													

	L mm	W mm	T mm	HC 20																	
		15,0	23,0	9,0	230155	K 22 / 0													R3		
		15,0	23,0	7,3	230157	K 22 / 3														R2	
		15,0	21,0	7,3	210157	K 22 / 3														R2F	
		15,0	23,0	7,0	230156	K 22 / 4														R1,5	
		15,0	23,0	9,0	231155	K 22 / 5														R3F	
		15,0	25,7	9,3	257159	K 23 / 1														Nut7	
				15,0	23,0	8,0	230158	K 21 / 0													45°
				15,0	23,0	9,0	230159	K 22 / 1													R3
				15,0	25,7	7,3	257158	K 24 / 0													R5
				15,0	25,7	7,3	257156	K 24 / 1													R5

	L mm	W mm	T mm	HC 20															
	dreapta	23,0	16,0	5,0	4801145														45°
		23,0	16,0	5,0	4801315														R1,5
		23,0	16,0	5,0	4801530														R3,0
		26,0	15,0	7,0	4801550														R5

	L mm	W mm	T mm	HC 20															
	stanga	23,0	16,0	5,0	4801245														45°
		23,0	16,0	5,0	4801415														R1,5
		23,0	16,0	5,0	4801630														R3,0
		26,0	15,0	7,0	4801650														R5