

4 LOAD CELL STAINLESS STEEL SCALE






Measurement with application of 4 load cells is a guarantee of precise readout, no matter of place of loading the mass on the weighing pan.

This platform scales with 4 load cells are manufactured in fully stainless steel technology and are offered in pit version. They are equipped with openable weighing platform (for easy cleaning area under the platform).

Stainless steel measuring indicator PUE C/31H with backlit LCD display is installed on 3 meter long cable with possibility of mounting on wall. Range of capacities for this scale varies from 300 kg / 100 g up to 6000 kg / 2000g.

Scales are powered from mains, RS 232 output is offered as standard.

-  Counting pieces
-  Checkweighing
-  Summing function

Technical data:

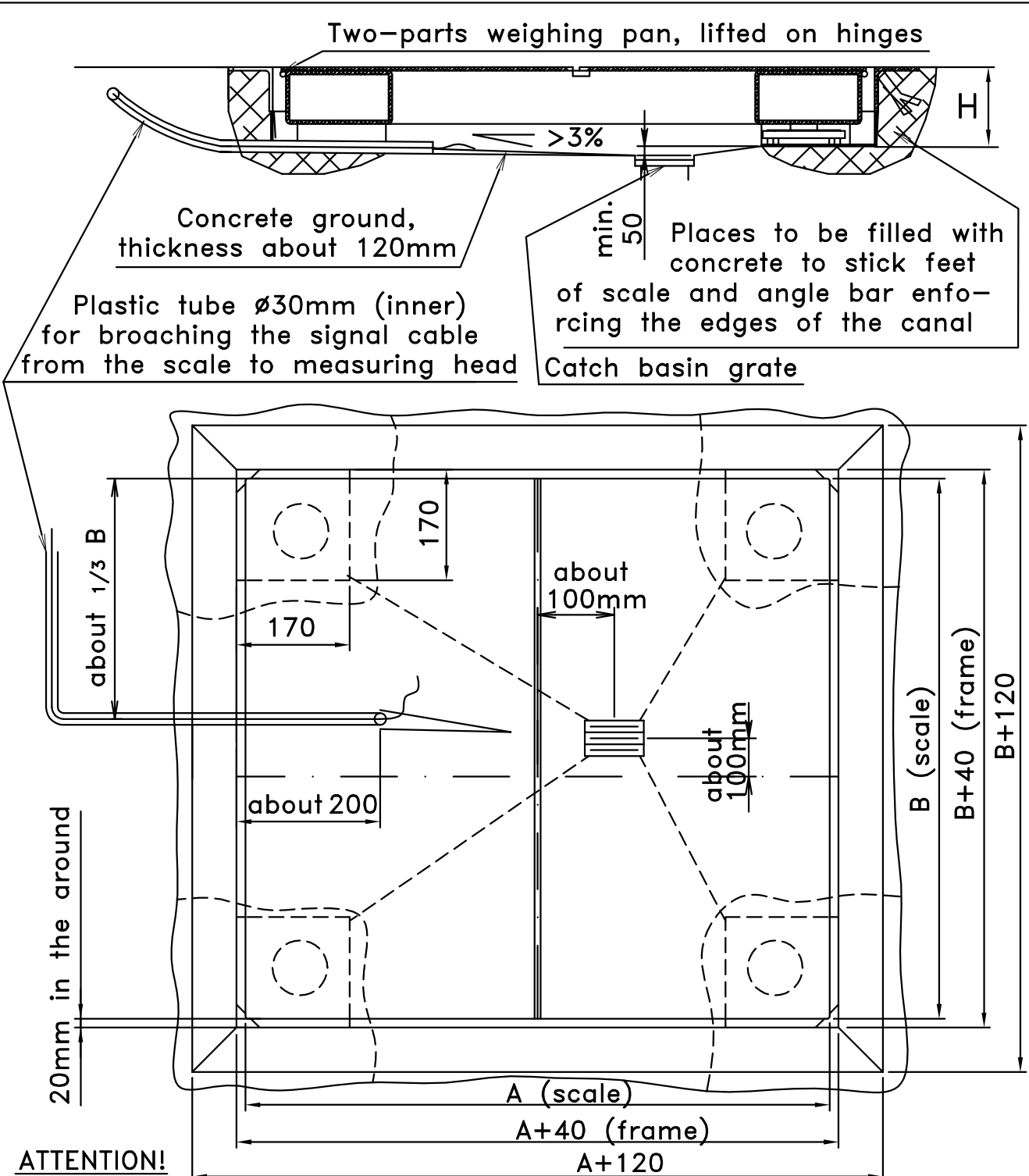
	WPT/4 300H6/Z	WPT/4 600H6/Z	WPT/4 300H7/Z	WPT/4 600H7/Z	WPT/4 1500H7/Z	WPT/4 1500H8/Z
Max capacity	300 kg	600 kg	300 kg	600 kg	1500 kg	1500 kg
Readability	100 g	200 g	100 g	200 g	500 g	500 g
Tare range	-300 kg	-600 kg	-300 kg	-600 kg	-1500 kg	-1500 kg
Pan size	800×800 mm	800×800 mm	1000×1000 mm	1000×1000 mm	1000×1000 mm	1200×1200 mm
Working temperature	-10° - +40 °C					
Output signal	RS 232					
IP rating	IP 68 construction, IP 66/67 indicator					
Power supply	230V AC, 50Hz / 11V AC and SLA 6V/3,4 Ah					
Display	LCD (backlit)					

Technical data:

	WPT/4 3000H8/Z	WPT/4 1500H9/Z	WPT/4 3000H9/Z	WPT/4 3000H10/Z	WPT/4 6000H10/Z
Max capacity	3000 kg	1500 kg	3000 kg	3000 kg	6000 kg
Readability	1000 g	500 g	1000 g	1000 g	2000 g
Tare range	-3000 kg	-1500 kg	-3000 kg	-3000 kg	-6000 kg
Pan size	1200×1200 mm	1500×1500 mm	1500×1500 mm	1500×2000 mm	1500×2000 mm
Working temperature	-10° - +40 °C				
Output signal	RS 232				
IP rating	IP 68 construction, IP 66/67 indicator				
Power supply	230V AC, 50Hz / 11V AC and SLA 6V/3,4 Ah				
Display	LCD (backlit)				

Additional equipment:

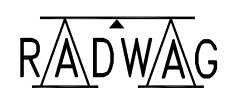
RACK FOR HEAD	RAMPS FOR LOW PROFILED SCALE
LCD ADDITIONAL DISPLAY	COMPUTER SOFTWARE: PW-WIN, RAD-KEY, REC-FS, LS-FS
LARGE SIZE ADDITIONAL DISPLAY	RS 232/RS 485 CONVERTER
"KAFKA" THERMAL PRINTER	EXTERNAL POWER OUTPUT
NEEDLE PRINTER "EPSON"	



ATTENTION!
 The catch basin grate should be positioned outside the centre of the caving. Frame is made of angle bar: 40x40x4.
 At the corners of the frame, the stands for the feet of the scale are welded.

Scale type	Dimension	A	B	H
WPT/4 300H6; 600H6	800x800	800	800	96
WPT/4 300H7;600H7; 1500H7	1000x1000	1000	1000	96
WPT/4 1500 H8	1200x1200	1200	1200	96
WPT/4 3000 H8	1200x1200	1200	1200	118
WPT/4 1500 H8/9	1200x1500	1200	1500	96
WPT/4 1500 H9	1500x1500	1500	1500	96
WPT/4 3000 H9	1500x1500	1500	1500	118
WPT/4 3000 H10	1500x2000	1500	2000	118

**RAMP SCALE
 WITH FRAME
 - PIT WERSION**



Radom, 08. 2005