



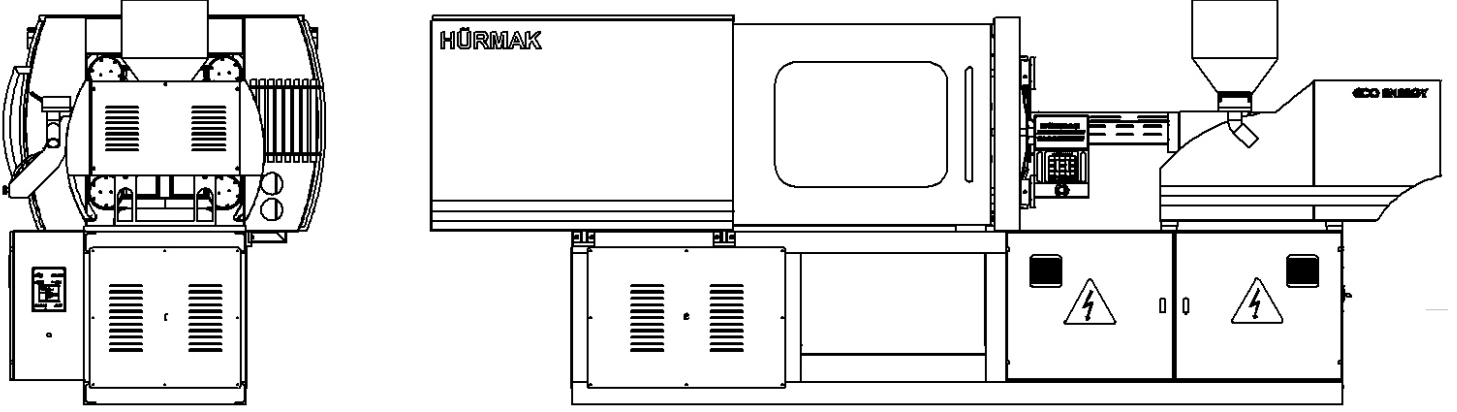
# HÜRMAK

plastik otomotiv makina imalat san. ve tic. a.ş.

**Quality. Reliability. Efficiency.**



**ECO ENERGY**  
SAVES THE FUTURE



## ECO SERIES TECHNICAL SHEET

### Machine Highlights :

- Start-stop inverter system that saves 30 to 70 percent of energy.
- LS PLC unit with 8.4 touch screen.
- Remote screen control via internet.
- 1 core as standard. ( Supports up to 4 cores. )
- Automatic mould thickness setting.
- Can save the mold thickness setting.
- Automatic injection capacity calculation page. Just enter the weight of the product you wish to produce and the machine makes the settings itself.
- 5 zones of open-close speed, pressure and position setting.
- Mold protection.
- 6 zones of injection pressure, speed and position setting.
- 4 zones of hold pressure pressure, speed and position setting.
- Automatic barrel cleaning. Makes it easier to change colors or materials.
- Can inject at back position with unit mobile and stationery option.
- Cores can work according to pressure, speed, time, position and switch.
- Can suck back before or after charging.
- Can cool after injection.
- Can cool after charging.
- Extrusion mode to increase the injection capacity if needed.



**HÜRMAK**  
plastik otomotiv makina imalat san. ve tic. a.ş.

**ECOENERGY**  
SAVES THE FUTURE

- Two stages of pressure and speed setting according to the charging position.
- Multiple times ejecting.
- Ejectors can hold at back or at forward position.
- Easy core settings page. Can scramble the core in and core out order.
- PLC input and output monitor page.
- PID controlled heater settings to reduce energy consumption.
- General monitoring page to watch all the processes.
- Easy-to-use mold memory either 40 or 150 molds.
- Alarm history page.
- Large alarm lamp with LED lights and sound.
- Fine and faulty production page.
- Can sound the alarm at the end of the desired production.
- Can stop the machine at the end of the desired production.
- 3 vacant outputs. ( Can be set for clamp, injection or charging according to time or position. )
- Injection weight calculation page.
- Energy consumption monitoring page.
- Sleep mode for heaters.
- RPM meter for charging.
- Hooper-dryer
- Auto-loader.
- Auto lubrication unit for toggles.
- Easy-to-work cabin design.
- Lightning system inside the cabin and the electrical cabinet.
- Turkish or English languages.
- Water flow regulators for machine and mold cooling water.
- T slot platens.
- Oil tank thermometer and high heat safety.
- Oil tank level indicator.
- Pressure sensor and level indicator for the lubrication tank.
- Screen-saver with password.
- Machine stabilization pads.
- Mold clamps.
- Aluminum body accesories.
- Stainless barrel cover.
- Emergency stop on either side of the machine.
- Electronic and mechanic safety measures for clamp.



**HÜRMAK**  
plastik otomotiv makina imalat san. ve tic. a.ş.

**ECOENERGY**  
SAVES THE FUTURE

**ECO750 TECHNICAL DATA**

**INJECTION UNIT**

SCREW DIAMETER	mm	90/95/100
L/D RATIO	L/D	20.5/19.1/18
INJECTION PRESSURE	Kg/cm <sup>3</sup>	1492/1340/1210
SHOT WEIGHT	Ps-gr	2720/3031/3359*
SCREW STROKE	mm	470
SCREW SPEED	Rpm	120
THEORETICAL SHOT VOLUME	Cm <sup>3</sup>	2989/3330/3690

**CLAMPING UNIT**

CLAMPING FORCE	Ton	750
DISTANCE BETWEEN TIE-BARS	mm	940X820
OPENING STROKE	mm	930
EJECTOR FORCE	Ton	11,7
EJECTOR STROKE	mm	250
NUMBER OF EJECTOR PINS		13
MOLD THICKNESS RANGE	Min-max	350-950

**GENERAL UNITS**

MAIN MOTOR POWER	Kw	55
TOTAL POWER ( Cons. )	Kw	85
NUM. OF HEATING ZONES + NOZZLE		5 + 1
TOTAL HEATING POWER	Kw	30
TOTAL OIL CAPACITY	Lt	900
TOTAL WEIGHT	Ton	35
TOTAL LENGHT	mm	8500
TOTAL WIDTH	mm	2050
TOTAL HEIGHT	mm	2500

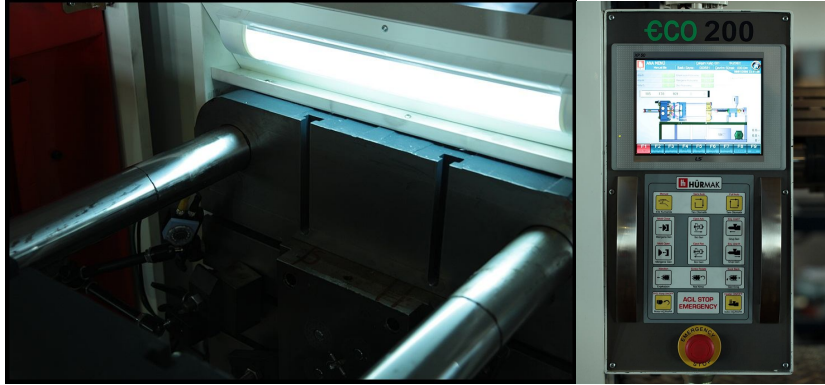
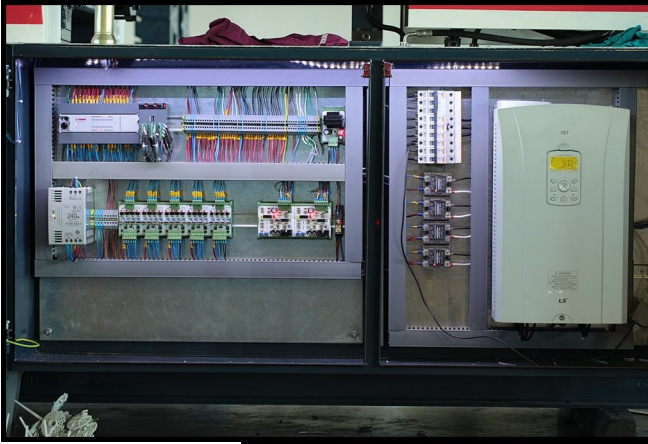
\* Shot weight is calculated according to PS. Different raw-materials may result in different shot weights.

\*\*We reserve the right to make any changes to the above units according to our constant product development.



**HÜRMAK**  
plastik otomotiv makina imalat san. ve tic. a.ş.

**ECOENERGY**  
SAVES THE FUTURE



\*Above pictures shows ECO200 and there for reference. While all the models share the same design, there might be minor changes according to the machine size.