



C.U.I. RO15564229, Nr. Inreg. R.C. J10/558/2003
 Sediul social: BERCA, str. Plesești, jud. BUZAU
 Capital social subscris și varsat: 400 LEI
 Cont IBAN: RO09 BRDE 100S V041 6457 1000
 Deschis la BRD sucursala Berca

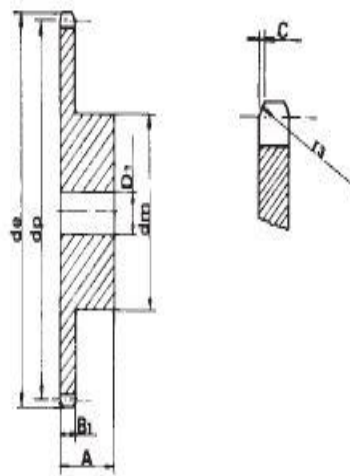
Telefon: +4 0238 510 851
 Fax: +4 0338 819 339
 Mobil: +4 0746 043 026
 E-mail: contact@bibiscom.ro
 Web site: www.bibiscom.ro

ROATA LANT PAS 1/2"x1/4"ROLA 8.51

Z	d _e	d _p	SINGLE		
			d _m	D ₁	A
8	37.2	33.18	20	10	25
9	41.0	37.13	24	10	25
10	45.2	41.10	26	10	25
11	48.7	45.07	29	10	25
12	53.0	49.07	33	10	28
13	57.4	53.06	37	10	28
14	61.8	57.07	41	10	28
15	65.5	61.09	45	10	28
16	69.5	65.10	50	12	28
17	73.6	69.11	52	12	28
18	77.8	73.14	56	12	28
19	81.7	77.16	60	12	28
20	85.8	81.19	64	12	28
21	89.7	85.22	68	14	28
22	93.8	89.24	70	14	28
23	98.2	93.27	70	14	28
24	101.8	97.29	70	14	28
25	105.8	101.33	70	14	28
26	110.0	105.36	70	16	30
27	114.0	109.40	70	16	30
28	118.0	113.42	70	16	30
29	122.0	117.46	80	16	30
30	126.1	121.50	80	16	30
31	130.2	125.54	90	16	30
32	134.3	129.56	90	16	30
33	138.4	133.60	90	16	30
34	142.6	137.64	90	16	30
35	146.7	141.68	90	16	30
36	151.0	145.72	90	16	35
37	154.6	149.76	90	16	35
38	158.6	153.80	90	16	35
39	162.7	157.83	90	16	35
40	166.8	161.87	90	16	35

Pignoni ad esaurimento

1/2" x 1/4" - 8.51 roller size
 for roller chains in compliance with DIN 8187 ISO/R 606



SPROCKET ————— mm

TOOTH RADIUS r₃ 13
 RADIUS WIDTH C 1.3
 SPROCKET TOOTH WIDTH B₁ 5.9

CHAIN ————— mm

PITCH 12.7
 INNER WIDTH 6.4
 ROLLER - Ø 8.51

MATERIAL: C 45 UNI 7845

