



C.U.I. RO15564229, Nr. Inreg. R.C. J10/558/2003  
 Sediul social: BERCA, str. Plesesti, jud. BUZAU  
 Capital social subscris si varsat: 400 LEI  
 Cont IBAN: RO09 BRDE 100S V041 6457 1000  
 Deschis la BRD sucursala Berca

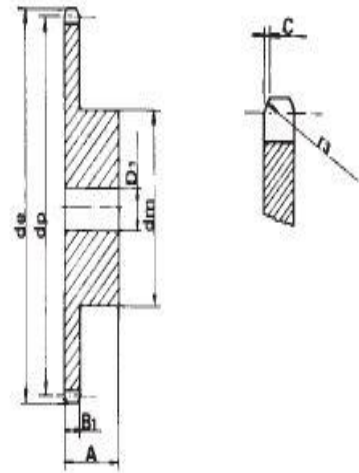
Telefon: +4 0238 510 851  
 Fax: +4 0338 819 339  
 Mobil: +4 0746 043 026  
 E-mail: [contact@bibiscom.ro](mailto:contact@bibiscom.ro)  
 Web site: [www.bibiscom.ro](http://www.bibiscom.ro)

## ROATA LANT PAS 1/2"x3/16"

Z	d <sub>e</sub>	d <sub>p</sub>	SINGLE		
			d <sub>m</sub>	D <sub>1</sub>	A
8	38.5	33.18	21	8	14
9	41.5	37.13	25	8	14
10	46.2	41.10	28	8	14
11	49.6	45.07	31	8	16
12	53.9	49.07	35	8	16
13	58.4	53.06	39	8	16
14	62.8	57.07	43	8	16
15	66.8	61.09	47	8	16
16	70.9	65.10	50	10	18
17	74.9	69.11	50	10	18
18	78.9	73.14	50	10	18
19	82.9	77.16	50	10	18
20	88.9	81.19	50	10	18
21	91.0	85.22	60	12	20
22	95.0	89.24	60	12	20
23	99.0	93.27	60	12	20
24	103.0	97.29	60	12	20
25	107.1	101.33	60	12	20
26	111.2	105.36	70	16	20
27	115.4	109.40	70	16	20
28	119.4	113.42	70	16	20
29	123.4	117.46	70	16	20
30	127.5	121.50	70	16	20
31	131.5	125.54	70	16	20
32	135.5	129.56	70	16	20
33	139.6	133.60	70	16	20
34	143.6	137.64	70	16	20
35	147.6	141.68	70	16	20
36	151.7	145.72	70	16	25
37	155.7	149.76	70	16	25
38	159.8	153.80	70	16	25
39	163.8	157.83	70	16	25
40	167.8	161.87	70	16	25

### 1/2" x 3/16"

for roller chains in compliance with DIN 8187 ISO/R 606



#### SPROCKET — mm

TOOTH RADIUS r <sub>3</sub>	13
RADIUS WIDTH C	1.3
SPROCKET TOOTH WIDTH B <sub>1</sub>	4.5

#### CHAIN — mm

PITCH	12.7
INNER WIDTH	4.88
ROLLER - Ø	7.75

MATERIAL: C 45 UNI 7845

