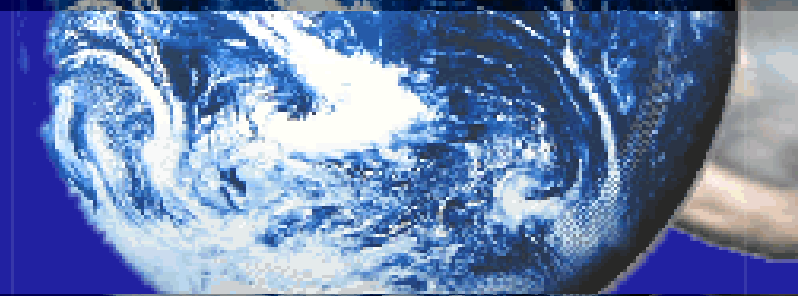
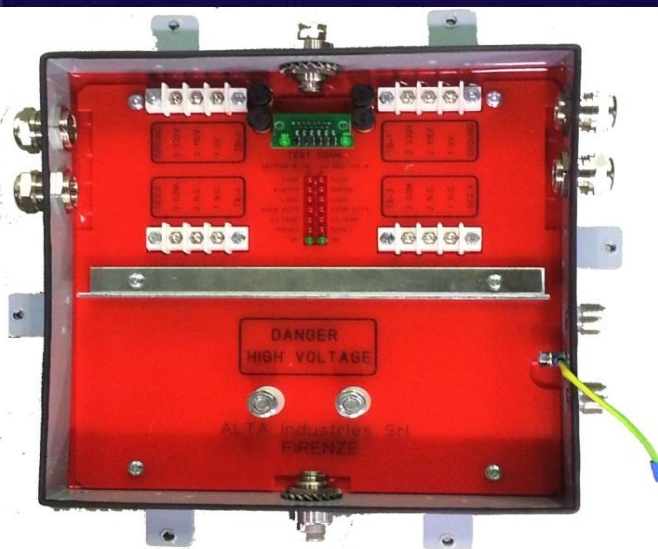


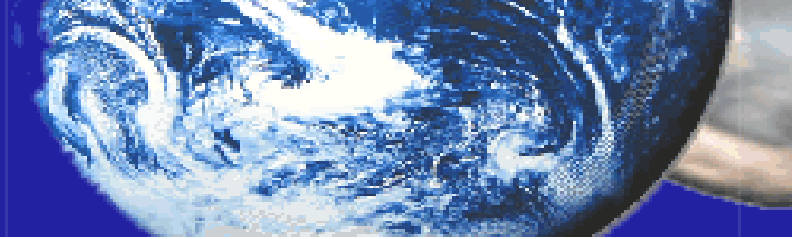
High Efficiency  
for HD Gas Turbines Ignition

**alta** s.r.l.  
INDUSTRIES



OEM Design Knowledge





## **Oil & Gas combustion spare**



**Ignition transformers  
for HD gas turbines**  
**Double/single output  
exciter systems**  
**Spark plugs cables**

## **Aerospace**



**Magnetic  
components for  
space**  
**Assembly boards  
and components**

## **Laboratory test & quality**



**Clean room for  
space assembling**  
**Thermic room for  
testing**  
**Vacuum lab for  
resin potting**

## **Rail & Military**



**Electronic boards  
for safety control**  
**Magnetic  
components for  
avionics & military  
applications**

**We provide ignition exciter systems tailor made solutions  
across HD GT markets**

# HEAVY DUTY Ignition transformer

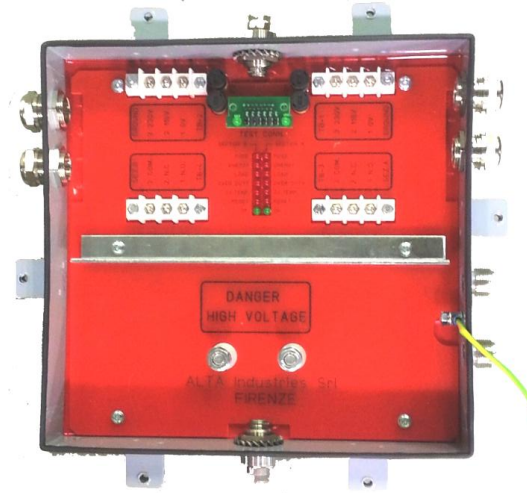
## Capacitive Type(PN 401560.01)

### Technical characteristics

- Power supply: 115//230 Vac 50/60Hz
- Stored energy: 16 joule
- Duty cycle: 60 sec ON / OFF for 4 hours
- Max. temp. environment of +65 ° C or 1 hour @+ 80° C
- Output Voltage : 15kV - 20 kV
- Output Pulse energy : 6 joule @12 meters cables maximum length
- Built-in predictive life diagnostics

### Key benefit

- High duty cycle performance, increased reliability.
- Improved reliability with the removal of the life limited radioactive spark gap



Radiation free

with CE, UL, CSA,  
options

for ATEX & IECEx cert



Available with a single- or dual-output exciter and a variety of igniter tips.



# Double output Capacitive Exciter 15kVpk

PN 401335.11/12 for american market



Execution :

IP65

ETLus Cetification

## Technical performance

- Power supply: 115//230 Vac 50/60Hz
- Stored energy: 16 joule
- Duty cycle: 3 times 90 sec ON/OFF then 25 min.OFF
- Max. temp. environment of  $+65^{\circ}\text{C}$  or 1 h @  $+80^{\circ}\text{C}$
- Output Voltage : 15kV - 20 kV
- Output Pulse energy : 6 joule @12 m cables maximum lenght



# Double output Capacitive Exciter system 15kVpk

PN 401335.11/12



Execution :

EEx -d with alloy enclosure

IP 65

EC Ex – explosion proof standard

ATEX, IECEx , EAC CUTR 021

## Technical performance

- Power supply: 115//230 Vac 50/60Hz
- Power : 400 VA average
- Stored energy: max 16 joule
- Duty cycle: 3 times 90 sec ON/OFF  
then 25 min.OFF
- Max. temp. environment of +65 ° C or 1  
hour @+ 80° C
- Output Voltage : 15kV - 20 kV
- Output Pulse energy : 6 joule @12 m cables  
maximum lenght



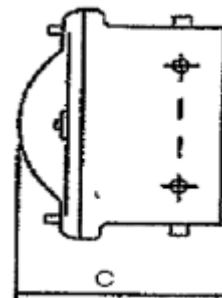
# Capacitive Exciter Single output PN 401131.13/4/5/8

## Technical performance

- Power supply: 115//230 Vac 50/60Hz
- Power: 200VA max
- Duty cycle : 3 times 60 sec. ON / OFF then 25 min. OFF
- Output Voltage : 2000 Vdc
- Minimum life : 360.000 impulses



Execution			
CE Declaration			
ATEX	IECEX	CU TR	EEx-d alloy
IP55	AISI		
Nema 7	alloy		



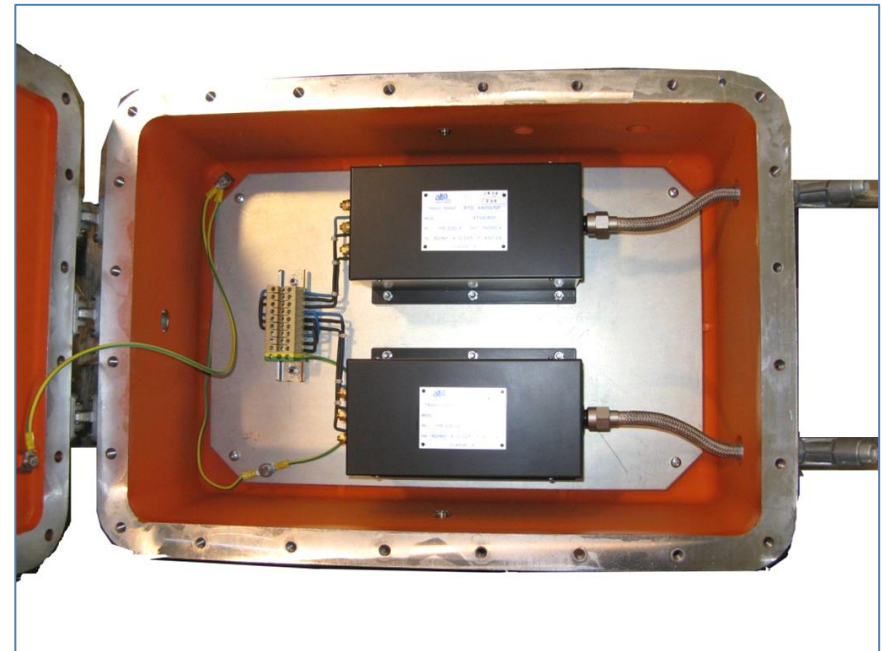
ATEX EC Ex – explosion  
proof standard CASE



Nema 7 alloy

# Ignition Exciter System Inductive Dual Output

## Technical performance

- Power supply: 115//230 Vac 50/60Hz
- Output Voltage : 15kV
- Duty cycle : continuous
- Short circuit output current: 25mA:
- Spark Rate : continuous



<b>alta</b> <small>s.r.l.</small> INDUSTRIES		<b>Inductive Ignition system</b>	
ALTA INDUSTRIES SRL		VIA E. CONTI 19 50018 SCANDICCI (FI) ITALY	
P/N :	401471.	S/N :	
DATE :		NP CODE	
VOLT :	115Vac/ 8 A 230Vac/ 4 A 50 / 60 Hz		
OUT :	15000Vac I:25 mA DUTY : Continuous		
	II -/2G Ex d IIB T <input checked="" type="checkbox"/> Gb		
BVI 15 ATEX 0010X			
IECEx EPS 15.0020X			

Assembly Certification :

ATEX

IECEX

EAC CU TR 021/2011

# Ignition Transformer Inductive

## Technical performance

- Power supply: 115//230 Vac 50/60Hz
- Short circuit output current: 25mA
- Power :450 VA max
- Output Voltage : 15kV
- Duty cycle : continuous
- Spark Rate : continuous
- Dimension max . : Length 270 , width 145 , Height 130
- Weight max : 12 Kg.
- Temperature -30C to 85C
- Ambient pressure : 1 Atm

PN 400671.02

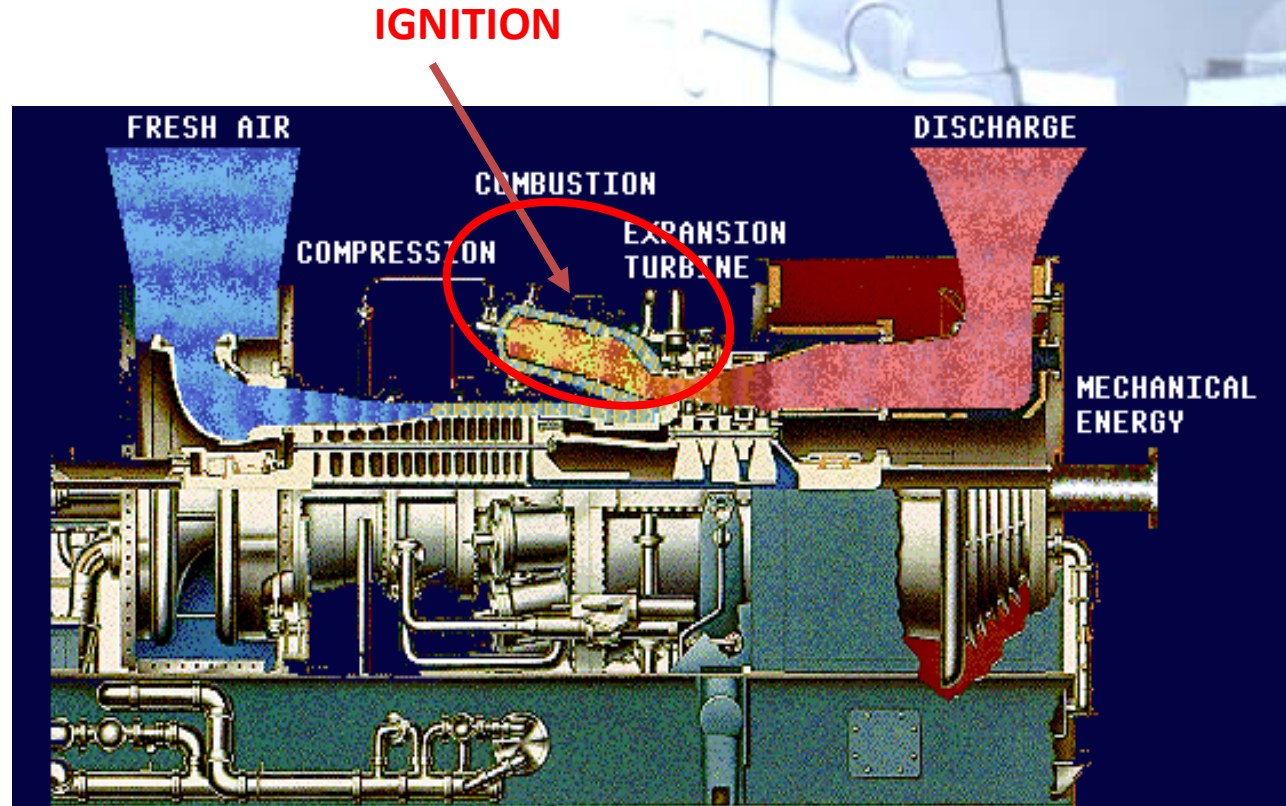


Standards

CEI EN 61558-1

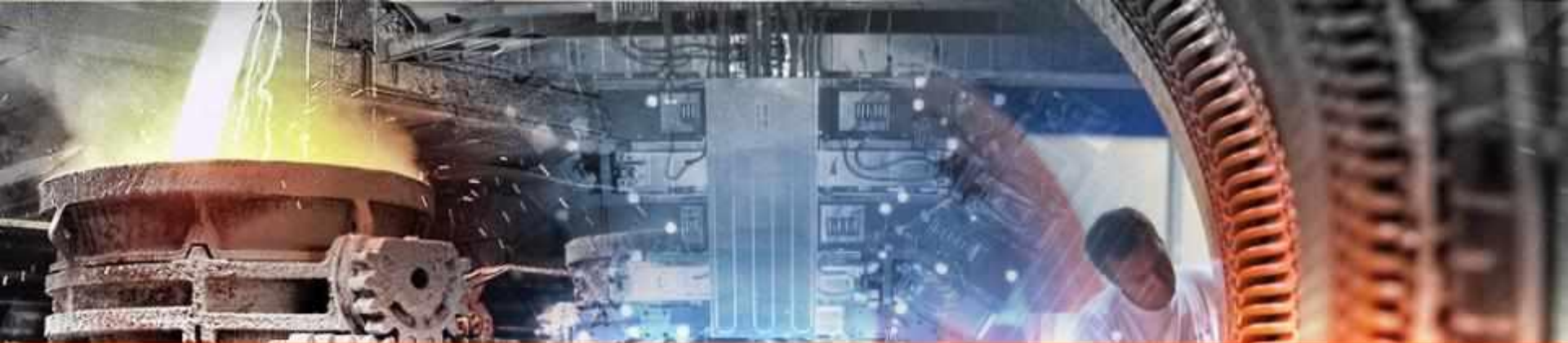


# Ignition excitors key benefit



## Reliability and Efficiency

Increased reliability, durability and performance with proven certified technology and lessons learned through decades of experience.



**Thank you for your attention**

**alta** s.r.l.  
**INDUSTRIES**



This document contains confidential and proprietary information of Altaindustries srl and must not be used for any purpose other than that for which it is supplied by Altaindustries srl. Its contents must not be disclosed to any other person nor copied in whole or in part without the prior written consent of Altaindustries srl.

**[www.altaindustries-srl.com](http://www.altaindustries-srl.com)**

