

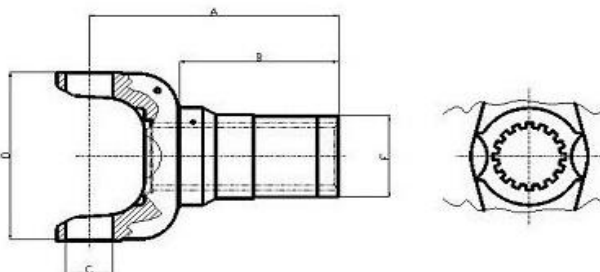


Hangzhou Xiaoxiang 肖肖 Your super supplier :High quality , Competitive price ,Perfect service

Hangzhou xiaoxiang auto parts manufacture co.,ltd.

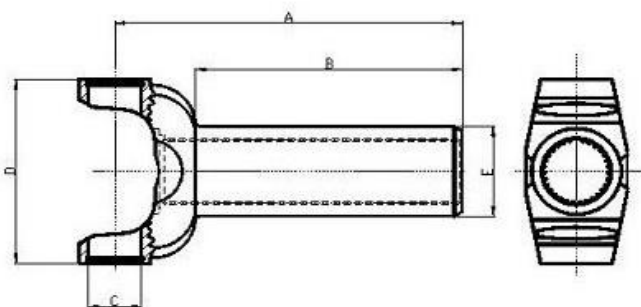
*Yoke series*

Rectangular spline slip yokes



Item	Part#	A	B	C	D	E	Splines	Note
1	6-3-3411KX	12.717"	6.354"	1.938"	6.094"	3.189"	16	
2	6.5-3-1351KX	10.250"	6.535"	1.938"	7.547"	3.622"	16	
3	6.5-3-1371KX	11.875"	8.150"	1.938"	7.547"	3.622"	16	
4	5-3-2261KX	10.812"	7.047"	1.875"	5.312"	2.244"	16	
5	3-3-1601KX	6.812"	4.646"	1.375"	4.488"	2.000"	16	
6	3-3-788KX	5.256"	3.189"	1.188"	4.488"	1.750"	16	

Involute spline slip yokes



Item	Part#	A	B	C	D	E	Splines	Note
1	2-3-10201X	7.000"	5.374"	1.062"	3.917"	1.886"	30/31	
2	2-3-12411X	5.750"	4.016"	1.062"	3.512"	1.500"	26/27	
3	2-3-12051X	6.732"	4.803"	1.062"	3.917"	1.500"	26/27	
4	3-2-5431X	7.312"	5.709"	1.188"	3.917"	1.886"	30/31	
5	3-3-5551X	7.940"	6.102"	1.188"	3.917"	1.886"	31/32	
6	3R-3-6081X	5.469"	3.780"	1.122"	3.681"	1.500"	26/27	
7	2-3-6000	4.469"	3.059"	1.062"	3.520"	1.373"	24/25	
8	2-3-5981X	5.906"	4.520"	1.062"	3.917"	1.500"	27/28	
9	2-3-6081X	5.469"	4.213"	1.062"	3.512"	1.500"	26/27	
10	2-3-6081LX	7.500"	6.244"	1.062"	3.512"	1.500"	26/27	
11	2-3-6081EX	5.469"	4.055"	1.188"	3.917"	1.500"	26/27	
12	3-3-4281X	6.940"	4.843"	1.188"	3.917"	1.500"	26/27	



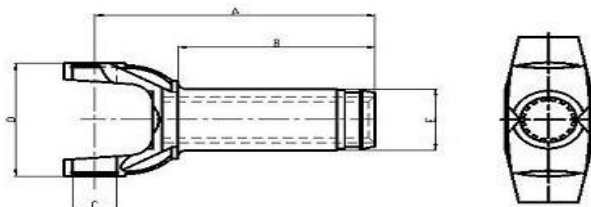
漢 小 雙 汽 車 零 件 有 限 公 司

Your super supplier :High quality , Competitive price ,Perfect service

Hangzhou xiaoxiang auto parts manufacture co.,ltd.

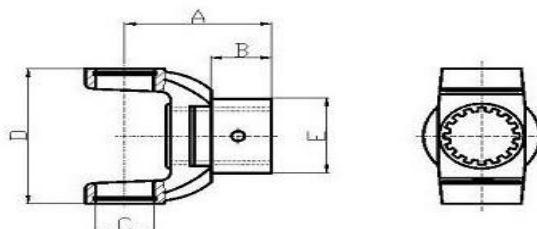
Yoke series

Rectangular spline slip yokes



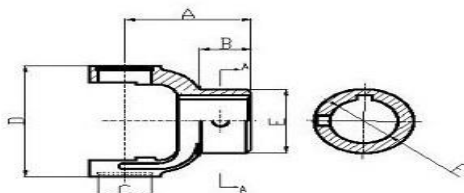
Item	Part#	A	B	C	D	E	Splines	Note
1	2-3-8001KX	6.812"	4.843"	1.062"	3.512"	1.890"	16	
2	2-3-8021KX	7.875"	5.827"	1.062"	3.512"	1.890"	16	
3	2-3-128KX	5.375"	3.752"	1.062"	3.512"	1.890"	16	
4	2-3-8841KX	6.562"	4.213"	1.062"	3.512"	1.575"	16	
5	2-3-8041KX	7.500"	5.866"	1.062"	3.917"	1.890"	16	
6	2-3-7961KX	6.000"	4.331"	1.062"	3.917"	1.890"	16	
7	3R-3-9170KX	7.375"	5.472"	1.125"	3.602"	2.000"	16	
8	10-3-18KX	5.500"	3.346"	0.937"	2.283"	1.587"	16	

End yokes with splined hole



Item	Part#	A	B	C	D	E	Splines	Note
1	30-4-001	2.677"	1.102"	1.062"	3.228"	1.772"	16	

End yokes with straight hole



序号	图号	A	B	C	D	E	F	备注
1	2-4-1103	2.562"	1.062"	1.062"	3.512"	2.000"	1.375"	
2	2-4-1233	2.562"	1.062"	1.062"	3.512"	2.125"	1.500"	
3	2-4-473	2.562"	1.062"	1.062"	3.512"	2.000"	1.000"	
4	10-4-93	2.500"	0.827"	0.938"	2.205"	2.000"	1.000"	

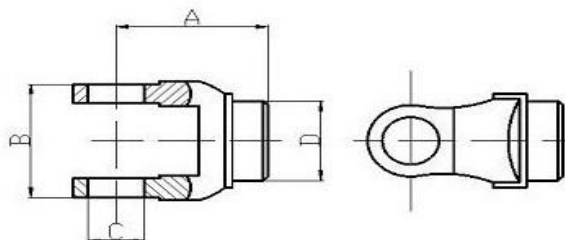


Hangzhou Xiaoxiang Auto Parts Manufacture Co., Ltd. Your super supplier :High quality , Competitive price ,Perfect service

Hangzhou Xiaoxiang Auto Parts Manufacture Co., Ltd.

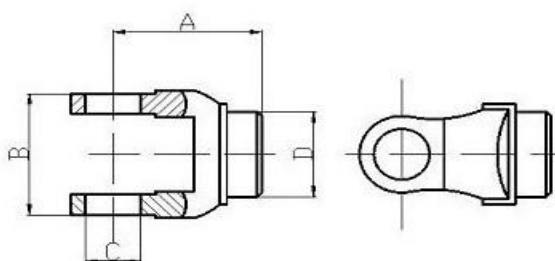
Yoke series

Tube yokes (Weld yokes)



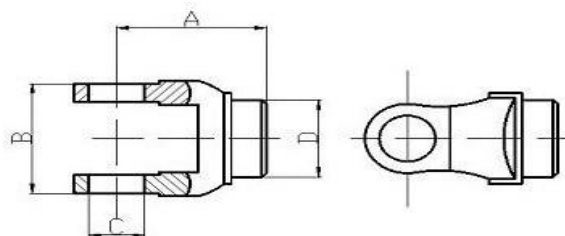
Item	Part#	A	B	C	D	Note
1	10-28-17	2.500"	2.244"	0.938"	1.575"	
2	2-28-357	1.693"	3.512"	1.062"	1.844"	
3	6-28-347	4.134"	6.094"	1.937"	3.732"	

Tube yokes (Weld yokes)



Item	Part#	A	B	C	D	Note
1	10-28-17	2.500"	2.244"	0.938"	1.575"	
2	2-28-357	1.693"	3.512"	1.062"	1.844"	
3	6-28-347	4.134"	6.094"	1.937"	3.732"	

Tube yokes (Weld yokes)



Item	Part#	A	B	C	D	Note
1	10-28-17	2.500"	2.244"	0.938"	1.575"	
2	2-28-357	1.693"	3.512"	1.062"	1.844"	
3	6-28-347	4.134"	6.094"	1.937"	3.732"	



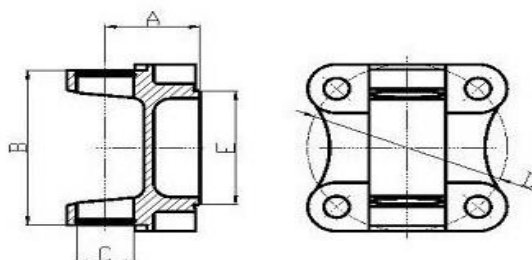


Hangzhou Xiaoxiang Auto Parts Your super supplier :High quality , Competitive price ,Perfect service

Hangzhou xiaoxiang auto parts manufacture co.,ltd.

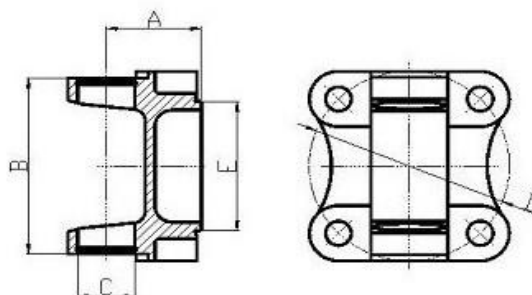
*Yoke series*

Flange yokes



Item	Part#	A	B	C	D	E	Note
1	9151F	1.693"	3.512"	1.062"	3.748"	2.717"	
2	30-2-001	1.315"	3.228"	1.062"	3.125"	2.543"	
3	3-2-479	2.000"	4.449"	1.374"	4.750"	3.750"	
4	5-2-279	2.750"	5.311"	1.874"	6.625"	6.860"	
5	3-2-119	1.575"	3.917"	1.188"	3.750"	2.750"	
6	2-2-939	1.654"	3.512"	1.062"	3.500"	Hole 2.000"	

Flange yokes



Item	Part#	A	B	C	D	E	Note
1	9151F	1.693"	3.512"	1.062"	3.748"	2.717"	
2	30-2-001	1.315"	3.228"	1.062"	3.125"	2.543"	
3	3-2-479	2.000"	4.449"	1.374"	4.750"	3.750"	
4	5-2-279	2.750"	5.311"	1.874"	6.625"	6.860"	
5	3-2-119	1.575"	3.917"	1.188"	3.750"	2.750"	
6	2-2-939	1.654"	3.512"	1.062"	3.500"	Hole 2.00"	



漢 XIAOXIANG 港

Your super supplier :High quality , Competitive price ,Perfect service

Hangzhou xiaoxiang auto parts manufacture co.,ltd.

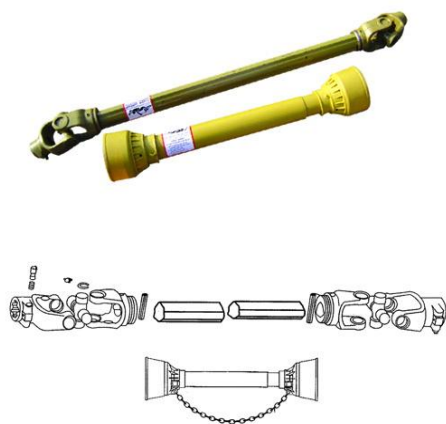
Yoke series

# 传动轴

PTO drive shaft

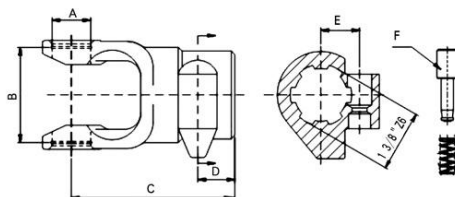
## 产品介绍 Production Information

### ★T系列传动轴



型号 MODEL	十字轴型号 CROSS JOURNAL	内管 INNER TUBE	外管 OUTER TUBE	传递功率 (POWER)		
				540 RPM	1000 RPM	
T10				Cv	16	24
				Kw	12	18
				Nm	210	170
T20				Cv	27	40
				Kw	20	30
				Nm	280	230
T30				Cv	33	50
				Kw	24	37
				Nm	400	320
T40				Cv	35	53
				Kw	26	39
				Nm	460	360
T50				Cv	47	75
				Kw	35	55
				Nm	620	500
T60				Cv	55	83
				Kw	40	61
				Nm	850	690
T70				Cv	75	106
				Kw	55	78
				Nm	1000	810
T80				Cv	70	118
				Kw	51	87
				Nm	970	830
T90				Cv	90	136
				Kw	66	100
				Nm	1250	1020

### SPLINED YOKE-PUSH PIN



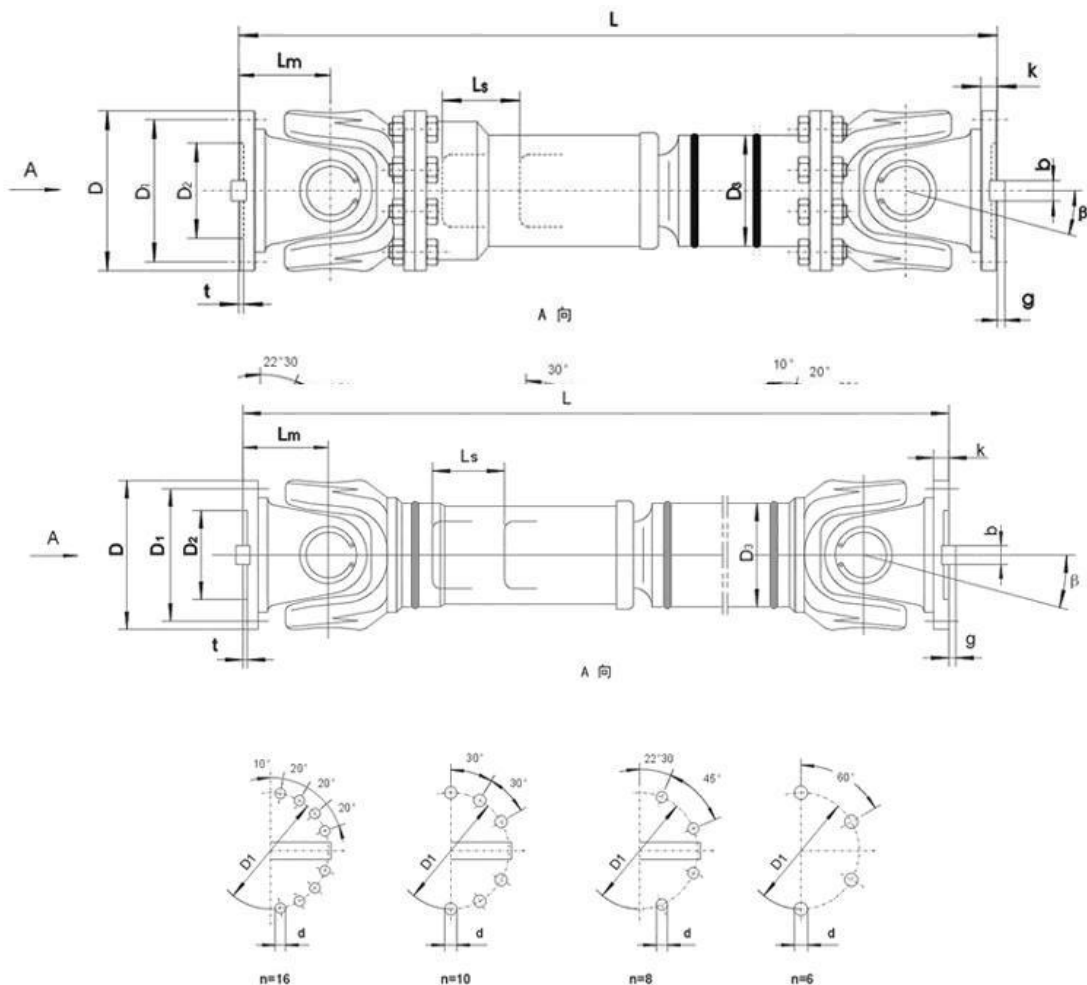
MODEL	A mm	B mm	C mm	D mm	E mm	F mm
T10	22	54	93	21	22	T00.01 PIN KIT
T20	24	61.2	99	19		
T30	27	70	104	21		
T40		74.6	108			
T50	30.2	80	116	22		
T60		92				
T70		106				
T80	35	94	118	21		
T90		106				



Hangzhou Xiaoxiang 您的超级供应商：高质量，竞争性价格，完美服务

Hangzhou Xiaoxiang Auto Parts Manufacturing Co., Ltd.

Drive shaft series



BH型——标准伸缩焊接式万向联轴器基本参数和主要尺寸

型号	回转直径 D mm	公称转矩 $T_n$ kN·m	疲劳转矩 $T_f$ kN·m	轴线折角 $\beta$ (°)	伸缩量 $L_s$ mm	尺寸 mm									
						$L_{min}$	$D_1$ (js11)	$D_2$ (H7)	$D_3$	$L_a$	n-d	k	t	b (h9)	g
SWC 075 BH	75	0.4	0.22	≤25	40	315	62	42	42	39	6-7	6	2.5	-	-
SWC 100 BH	100	1.25	0.63	≤25	55	390	84	57	60	55	6-9	7	2.5	-	-
SWC 120 BH	120	2.5	1.25	≤25	80	485	102	75	70	65	8-11	8	2.5	-	-
SWC 150 BH	150	5	2.5	≤25	80	590	130	90	89	80	8-13	10	3.0	-	-
SWC 180 BH	180	12.5	6.3	≤25	100	810	155	105	114	110	8-17	17	5.0	-	-
SWC 200 BH	200	30	15	≤15	140	823	175	125	127	110	8-17	17	5.0	28	8
SWC 225 BH	225	40	20	≤15	140	920	196	135	152	120	8-17	20	5.0	32	9.0
SWC 250 BH	250	63	31.5	≤15	140	1035	218	150	168	140	8-19	25	6.0	40	12.5
SWC 285 BH	285	90	45	≤15	140	1190	245	170	194	160	8-21	27	7.0	40	15.0

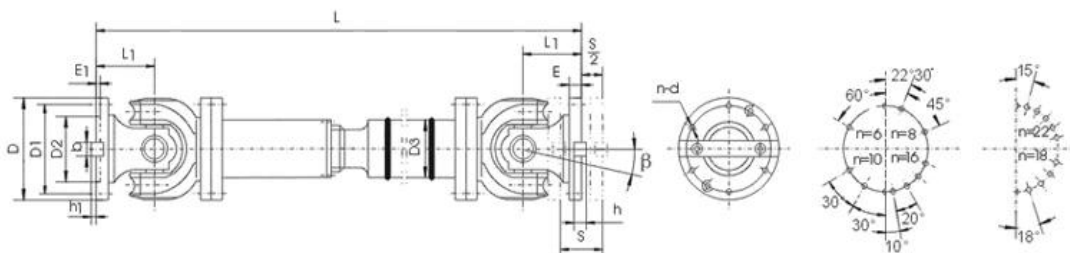


XIAOXIANG

Your super supplier :High quality , Competitive price ,Perfect service

Hangzhou xiaoxiang auto parts manufacture co.,ltd.

Drive shaft series



E型—有伸缩双法兰长型

型号	回转直径 D mm	公称 转矩 T <sub>n</sub> kN·m	疲劳 转矩 T <sub>r</sub> kN·m	轴承 折角 β (°)	伸缩量 s mm	尺寸 mm										
						L <sub>min</sub>	D <sub>1</sub> (J311)	D <sub>2</sub> (H7)	D <sub>3</sub>	E	E <sub>1</sub>	b×h	h <sub>1</sub>	L <sub>1</sub>	n-d	
SWP 160 E	160	16	8	≤10	50	715	140	95	114	15	4	20×12	6	85	6-13	
SWP 180 E	180	20	10	≤10	60	800	155	105	121	15	4	24×14	7	95	6-15	
SWP 200 E	200	31.5	16	≤10	70	880	175	125	127	17	5	28×16	8	110	8-15	
SWP 225 E	225	40	20	≤10	76	1 000	196	135	152	20	5	32×18	9	130	8-17	
SWP 250 E	250	63	31.5	≤10	80	1 055	218	150	168	25	5	40×25	12.5	135	8-19	
SWP 285 E	285	90	45	≤10	100	1 210	245	170	194	27	7	40×30	15	150	8-21	
SWP 315 E	315	140	63	≤10	110	1 345	280	185	219	32	7	40×30	15	170	10-23	
SWP 350 E	350	180	90	≤10	120	1 480	310	210	245	35	8	50×32	16	185	10-23	
SWP 390 E	390	250	112	≤10	120	1 623	345	235	273	40	8	70×36	18	205	10-25	
SWP 435 E	435	355	160	≤10	150	1 860	385	255	299	42	10	80×40	20	235	16-28	
SWP 480 E	480	450	224	≤10	170	2 122	425	275	351	47	12	90×45	22.5	265	16-31	
SWP 550 E	550	710	315	≤10	190	2 338	492	320	402	50	12	100×45	22.5	290	16-31	
SWP 600 E	600	1 000	500	≤10	210	2 930	544	380	450	55	15	90×55	27.5	360	22-34	
SWP 640 E	640	1 250	630	≤10	230	3 170	575	385	480	60	15	100×60	30	385	18-38	

注：标记示例：回转直径D=315mm，安装长度L=1800mm，E型有伸缩双法兰长型万向联轴器。

SWP315E×1800 联轴器



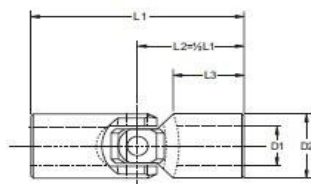




漢 小 雙 箭

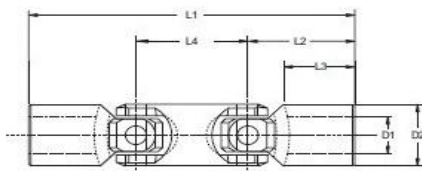
Your super supplier :High quality , Competitive price ,Perfect service

Hangzhou xiaoxiang auto parts manufacture co.,ltd. *Universal joint series*



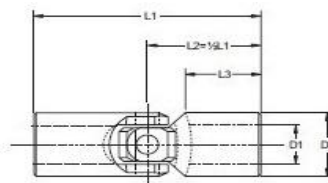
**Standard Single Universal Joints**

Part No.	øD2 [mm]	øD1 H7 [mm]	L1 [mm]	L2 [mm]	L3 [mm]	S H8 [mm]	SW H8 [mm]	K x T [mm]	Max. Op. Torque lbf-in [Nm]
UJ-HD10	10	5	40	20	13	-	5	-	48 [ 5.5]
UJ-HD13	13	6	40	20	13	6	-	-	58 [ 6.6]
UJ-HD16	16	8	40	20	10	8	8	2 x 9	115 [ 13]
UJ-HD20	20	10	45	22.5	10	10	10	3 x 11.4	221 [ 25]
UJ-HD25	25	12	50	25	11	12	12	4 x 13.8	398 [ 45]
UJ-HD29	29	14	56	28	13	14	14	5 x 16.3	619 [ 70]
UJ-HD32	32	16	65	32.5	15	16	16	5 x 18.3	778 [ 88]
UJ-HD37	37	18	72	36	17	18	18	6 x 20.8	1416 [160]
UJ-HD40	40	20	82	41	19	20	20	6 x 22.8	2124 [240]
UJ-HD47	47	22	95	47.5	22	22	22	6 x 24.8	2655 [300]
UJ-HD50	50	25	108	54	27	25	25	8 x 28.3	3451 [390]
UJ-HD58	58	30	122	61	30	30	30	8 x 33.3	3805 [430]



**Standard Double Universal Joints**

Part No.	øD2 [mm]	øD1 H7 [mm]	L1 [mm]	L2 [mm]	L3 [mm]	L4 [mm]	S H8 [mm]	SW H8 [mm]	K x T [mm]	Max. Operating Torque lbf-in [Nm]
DUJ-HD13	13	6	63	20	13	23	6	-	-	53 [ 6]
DUJ-HD16	16	8	67	20	10	27	8	8	2 x 9	106 [ 12]
DUJ-HD20	20	10	74	22.5	10	29	10	10	3 x 11.4	203 [ 23]
DUJ-HD22	22	12	74	25	11	29	12	12	4 x 13.8	362 [ 41]
DUJ-HD25	25	14	85	28	13	33	14	14	5 x 16.3	557 [ 63]
DUJ-HD29	29	16	100	32.5	19	35	16	16	5 x 18.3	699 [ 79]
DUJ-HD32	32	18	112	36	20	39	18	18	6 x 20.8	1274 [144]
DUJ-HD40	40	20	128	41	19	46	20	20	6 x 22.8	1911 [216]
DUJ-HD40	40	22	145	47.5	25	46	22	22	6 x 24.8	2389 [270]
DUJ-HD50	50	25	163	54	24	59	25	25	8 x 28.3	3106 [351]
DUJ-HD58	58	30	182	61	30	66	30	30	8 x 33.3	3425 [387]



**Precision Single Universal Joints**

Part No.	øD2 [mm]	øD1 H7 [mm]	L1 [mm]	L2 [mm]	L3 [mm]	S H8 [mm]	SW H8 [mm]	K x T [mm]	Max. Op. Torque lbf-in [Nm]
UJ-HS16	16	8	40	20	11	-	-	2 x 9	115 [ 13]
UJ-HS20	20	10	45	22.5	10	10	10	3 x 11.4	221 [ 25]
UJ-HS22	22	10	45	22.5	10	10	10	3 x 11.4	380 [ 43]
UJ-HS25	25	12	50	25	11	12	12	4 x 13.8	601 [ 68]
UJ-HS29	29	14	56	28	13	14	14	5 x 16.3	761 [ 86]
UJ-HS32	32	16	65	32.5	15	16	16	5 x 18.3	1380 [156]
UJ-HS37	37	18	72	36	17	18	18	6 x 20.8	2124 [240]
UJ-HS40	40	20	82	41	19	20	20	6 x 22.8	2124 [240]
UJ-HS47	47	22	95	47.5	22	22	22	6 x 24.8	2655 [300]
UJ-HS50	50	25	108	54	26	25	25	8 x 28.3	3398 [384]
UJ-HS58	58	30	122	61	30	30	30	8 x 33.3	3823 [432]
UJ-HS63	63	32	130	65	30	30	35	10 x 35.3	3823 [432]
UJ-HS70	70	35	140	70	35	-	35	10 x 38.3	4035 [456]
UJ-HS80	80	40	160	80	42	-	35	12 x 43.3	4460 [504]
UJ-HS95	93	50	190	85	54	-	35	14 x 53.8	6372 [720]