

UN TORENT ÎN UNIVERSUL FLUIDELOR !

DESTINAȚIE

- Industria chimică;
- Industria alimentară;
- Industria energetică;
- Sunt destinate exclusiv lichidelor unguente, neagresive, fără impurități, cu o vâscozitate cuprinsă între 2°E-20°E și o temperatură de maxim 80°C.

OPȚIUNI

- Etanșare mecanică;
- Diverse clase de protecție pentru motorul electric: Exd II Ct4;
- Diverse clase de tensiune: 380 V; 415 V; 500 V;
- Diverse clase de izolație: E; F;
- Diverse sisteme de operare disponibile;

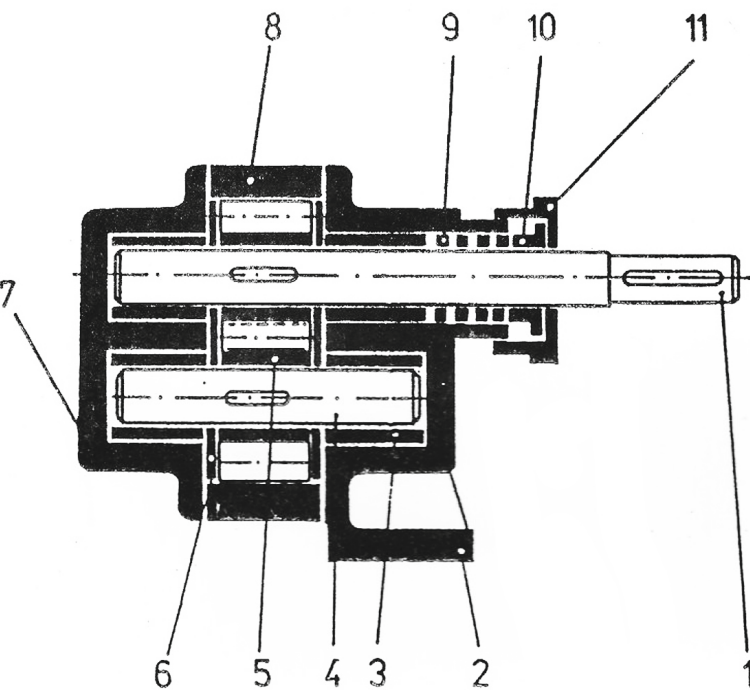
PARAMETRI

- Debit 7,5-565 l/min
- Presiune 2-16 bar
- Temperatură max. 80 °C
- Presiune Nominală DL 1...DL 8:16 bar
DL 9...DL 11:10 bar
DL 12:8 bar
- DN Aspirație G3/4" ... G,3/4" și 65 mm
- DN Refulare G3/4" ... G,3/4" și 65 mm

MOTOR

CURRENT TRIFAZIC

| | | |
|--------------------|-----------------|-----|
| Turații | 950; 1450 | rpm |
| Putere Nominală | 0,75-18,5 | Kw |
| Tensiune | <7.5Kw: 220/380 | V |
| | >11 Kw: 380/660 | V |
| Frecvență | 50 | Hz |
| Clasa de Izolație | B | |
| Clase de Protecție | Ip54 | |



- 1. Arbore
- 2. Corp suport
- 3. Bucșă
- 4. Ax
- 5. Roată dințată
- 6. Disc uzură
- 7. Capac
- 8. Corp
- 9. Garnitură
- 10. Presetupă
- 11. Piuliță

AVANTAJE

- Dimensiuni reduse;
- Interschimbabilitate;
- Viață lungă și fiabilitate;
- Motoare electrice standardizate;

CONSTRUCȚIE

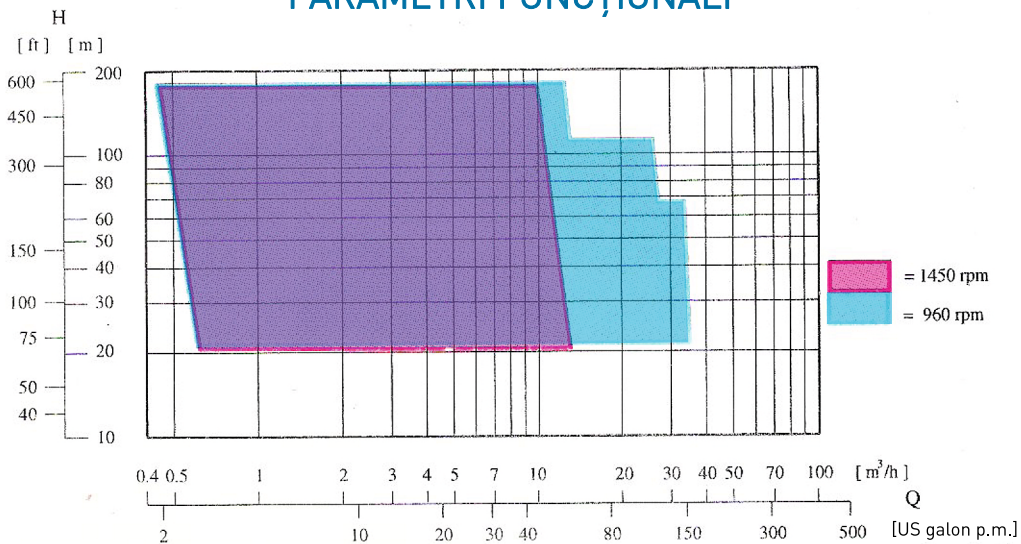
- Pompe volumice cu roți dințate;
- Atât aspirația cât și refularea pe orizontală;
- Lagăre de alunecare;
- Uns de lichidul circulat;
- Prevăzut cu presetupă și izolație cu șnur grafitat.

710005 BOTOȘANI, Str. MANOLEȘTI-DEAL 29A

Desfacere: 004(+) 0331 713 732 • Centrală: 004(+) 0231 516 661 • Fax: 004(+) 0231 517 530

E-mail: pumps@mecanex.ro • mecanexbotosani@yahoo.com • Web: www.mecanex.ro

PARAMETRI FUNCȚIONALI

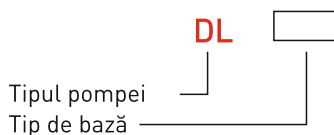


| TIPUL POMPEI | 960 rpm | | | | | | | | | 1450 rpm | | | | | | | | |
|--------------|---------------------------------|-------|-------|-------|-------|-------|-------|-------|-------|----------|-------|-------|-------|-------|-------|-------|-------|--|
| | Presiune [Kgf/cm ²] | | | | | | | | | | | | | | | | | |
| | [bar] | 2 | 4 | 6 | 8 | 10 | 12 | 14 | 16 | 2 | 4 | 6 | 8 | 10 | 12 | 14 | 16 | |
| | [m] | 20.6 | 41.3 | 62 | 82.6 | 103.3 | 124 | 144 | 165 | 20.6 | 41.6 | 62 | 82.6 | 103.3 | 124 | 144 | 165 | |
| DL 1 | l/min | 10.2 | 10 | 9.8 | 9.3 | 8.9 | 8.5 | 8 | 7.5 | 15.8 | 15.5 | 14.9 | 14.2 | 13.8 | 13.4 | 13 | 12.3 | |
| | lmp.gpm | 2.23 | 2.2 | 2.12 | 2.01 | 1.94 | 1.87 | 1.76 | 1.65 | 3.48 | 3.41 | 3.26 | 3.11 | 3.04 | 2.93 | 2.86 | 2.71 | |
| | kW | 0.75 | 0.75 | 1.1 | 1.1 | 1.1 | 1.1 | 1.5 | 1.5 | 0.75 | 0.75 | 1.1 | 1.1 | 1.1 | 1.1 | 1.5 | 1.5 | |
| DL 2 | l/min | 12 | 11.7 | 11.4 | 11 | 10.7 | 10.2 | 9.8 | 9.2 | 18.6 | 18.1 | 17.6 | 16.9 | 16.1 | 15.7 | 15 | 14.2 | |
| | lmp.gpm | 2.64 | 2.56 | 2.49 | 2.42 | 2.34 | 2.23 | 2.12 | 2.01 | 4.07 | 3.96 | 3.85 | 3.70 | 3.52 | 3.44 | 3.30 | 3.11 | |
| | kW | 0.75 | 0.75 | 1.1 | 1.1 | 1.1 | 1.1 | 1.5 | 1.5 | 0.75 | 0.75 | 1.1 | 1.1 | 1.1 | 1.1 | 1.5 | 1.5 | |
| DL 3 | l/min | 22.4 | 22.2 | 21.9 | 21.0 | 20 | 19.3 | 18.7 | 17.9 | 35 | 35 | 33 | 31.5 | 30 | 28.6 | 27 | 25.9 | |
| | lmp.gpm | 4.91 | 4.87 | 4.80 | 4.62 | 4.40 | 4.21 | 4.10 | 3.96 | 7.70 | 7.48 | 7.26 | 6.93 | 6.60 | 6.27 | 5.94 | 5.72 | |
| | kW | 0.75 | 1.1 | 1.1 | 1.1 | 1.1 | 1.1 | 1.5 | 1.5 | 1.1 | 1.1 | 1.1 | 1.1 | 1.5 | 1.5 | 2.2 | 2.2 | |
| DL 4 | l/min | 27.1 | 26.2 | 25.7 | 24.9 | 23.9 | 23.0 | 22.0 | 20.5 | 42.0 | 40.5 | 38.5 | 37.5 | 36.0 | 34.0 | 32.5 | 31.0 | |
| | lmp.gpm | 5.94 | 5.75 | 5.64 | 5.50 | 5.28 | 5.06 | 4.84 | 4.51 | 9.24 | 8.91 | 8.47 | 8.25 | 7.92 | 7.48 | 7.15 | 6.82 | |
| | kW | 0.75 | 1.1 | 1.1 | 1.1 | 1.5 | 1.5 | 1.5 | 1.5 | 1.1 | 1.1 | 1.1 | 1.5 | 1.5 | 1.5 | 2.2 | 2.2 | |
| DL 5 | l/min | 50.0 | 48.5 | 47.0 | 45.0 | 43.0 | 41.5 | 39.5 | 38.0 | 74.5 | 73.0 | 71.0 | 69.0 | 67.5 | 65 | 62 | 59 | |
| | lmp.gpm | 11.00 | 10.67 | 10.34 | 9.90 | 9.46 | 9.13 | 8.69 | 8.36 | 16.39 | 16.06 | 15.62 | 15.18 | 14.85 | 14.30 | 13.64 | 12.98 | |
| | kW | 1.1 | 1.1 | 1.5 | 1.5 | 2.2 | 2.2 | 2.2 | 3 | 1.1 | 1.5 | 1.5 | 2.2 | 2.2 | 3 | 3 | 4 | |
| DL 6 | l/min | 61.0 | 59.5 | 57.5 | 55.5 | 54.0 | 51.5 | 49.5 | 48 | 94.0 | 92.0 | 90.0 | 87.5 | 85.0 | 82.0 | 79.5 | 76.0 | |
| | lmp.gpm | 13.42 | 13.09 | 12.65 | 12.21 | 11.88 | 11.33 | 10.89 | 10.56 | 20.68 | 20.24 | 19.80 | 19.25 | 18.70 | 18.04 | 17.49 | 16.72 | |
| | kW | 1.1 | 1.1 | 1.5 | 2.2 | 2.2 | 3 | 3 | 3 | 1.5 | 1.5 | 2.2 | 2.2 | 3 | 3 | 4 | 4 | |
| DL 7 | l/min | 110 | 107 | 104 | 100 | 97 | 95 | 90.5 | 88 | 165 | 161 | 159 | 155 | 150 | 144 | 139.5 | 133 | |
| | lmp.gpm | 24.20 | 23.54 | 22.88 | 22.00 | 21.34 | 20.90 | 19.91 | 19.36 | 36.30 | 35.42 | 34.98 | 34.91 | 33.00 | 31.68 | 30.69 | 29.26 | |
| | kW | 2.2 | 2.2 | 3 | 4 | 4 | 5.5 | 5.5 | 7.5 | 3 | 4 | 4 | 5.5 | 7.5 | 7.5 | 11 | 11 | |
| DL 8 | l/min | 131 | 130 | 128 | 122 | 120 | 115 | 110 | 108 | 205 | 202 | 199 | 192 | 188 | 180 | 174 | 170 | |
| | lmp.gpm | 28.82 | 28.60 | 28.16 | 26.84 | 26.40 | 25.30 | 24.20 | 19.36 | 45.10 | 44.44 | 43.78 | 42.24 | 41.36 | 39.60 | 38.28 | 37.4 | |
| | kW | 2.2 | 3 | 4 | 4 | 5.5 | 5.5 | 7.5 | 7.5 | 4 | 4 | 5.5 | 5.5 | 7.5 | 7.5 | 11 | 11 | |
| DL 9 | l/min | 250 | 245 | 235 | 230 | 222 | | | | | | | | | | | | |
| | lmp.gpm | 55 | 53.9 | 51.7 | 50.6 | 48.4 | | | | | | | | | | | | |
| | kW | 4 | 5.5 | 7.5 | 7.5 | 7.5 | | | | | | | | | | | | |
| DL10 | l/min | 295 | 290 | 281 | 275 | 265 | | | | | | | | | | | | |
| | lmp.gpm | 64.9 | 63.8 | 61.6 | 60.5 | 58.3 | | | | | | | | | | | | |
| | kW | 5.5 | 7.5 | 7.5 | 7.5 | 11 | | | | | | | | | | | | |
| DL11 | l/min | 490 | 480 | 465 | 450 | 440 | | | | | | | | | | | | |
| | lmp.gpm | 107.8 | 105.6 | 102.3 | 99 | 96.8 | | | | | | | | | | | | |
| | kW | 5.5 | 7.5 | 11 | 15 | 18.5 | | | | | | | | | | | | |
| DL12 | l/min | 590 | 580 | 565 | | | | | | | | | | | | | | |
| | lmp.gpm | 129.8 | 127.6 | 124.3 | | | | | | | | | | | | | | |
| | kW | 5.5 | 7.5 | 11 | | | | | | | | | | | | | | |

Caracteristicile (debit, presiune, putere) sunt indicate pentru ulei cu vâscozitate de 5°E. Pentru alte vâscozități este necesară corelarea puterii motorului de antrenare cu aceasta. Valorile reale ale debitului pot varia față de cele indicate cu -5% și +10%.

Observație: puterea indicată este a motorului de antrenare.

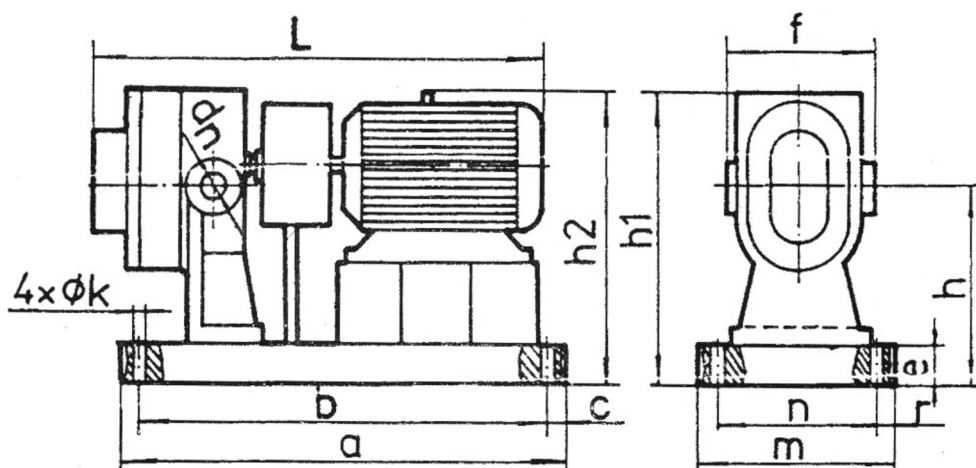
SIMBOLIZARE



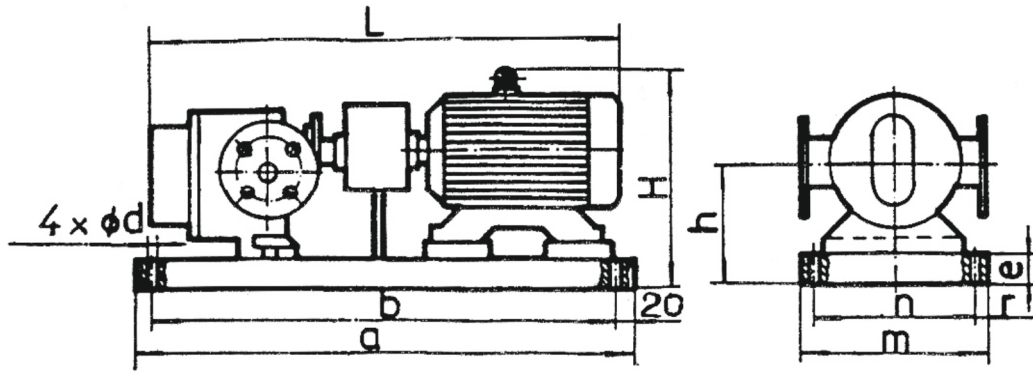
- Construcție lagăr: L = rulment
- Etanșare F = etanșare moale

- Material execuție: OLC45 = oțel carbon de calitate
- Piese udate: F01 = fonă cenușie

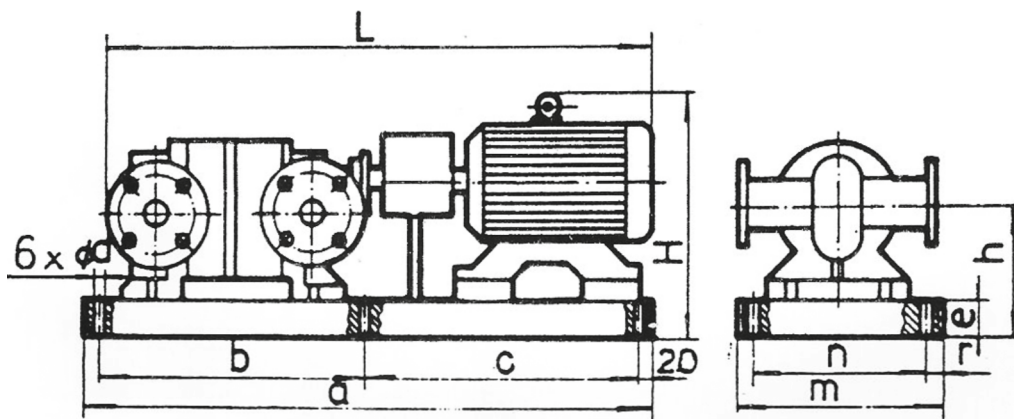
CARACTERISTICI DIMENSIONALE



| TIPUL POMPEI | dn | a | b | c | e | f | 4xk | h | h1 | h2 | m | n | r | L | Putere | Turație | Gabarit |
|-------------------|---------|-----|-----|----|-----|------|-------|-------|-------|-----|-----|------|------------|------------|--------|---------|---------|
| | mm | mm | mm | mm | mm | mm | | mm | mm | mm | mm | mm | mm | mm | kW | rpm | |
| DL 1 & DL 2 | G3/4" | 387 | 347 | 20 | 42 | 110 | 4x12 | 139 | 199.5 | 326 | 206 | 145 | 30.5 | 525 532 | 0.75 | 1500 | 80 |
| | G3/4" | 405 | 365 | 20 | 42 | 110 | 4x12 | 144 | 204.5 | 302 | 190 | 140 | 25 | 521 528 | 0.75 | 1000 | 90S |
| | G3/4" | 405 | 365 | 20 | 42 | 110 | 4x12 | 144 | 204.5 | 302 | 190 | 140 | 25 | 521 528 | 1.1 | 1500 | 90S |
| | G3/4" | 440 | 400 | 20 | 42 | 110 | 4x12 | 144 | 204.5 | 307 | 190 | 140 | 25 | 575 582 | 1.1 | 1000 | 90L |
| | G3/4" | 440 | 400 | 20 | 42 | 110 | 4x12 | 144 | 204.5 | 307 | 190 | 140 | 25 | 575 582 | 1.5 | 1500 | 90L |
| | G3/4" | 447 | 407 | 20 | 42 | 110 | 4x12 | 145 | 205.3 | 373 | 220 | 156 | 32 | 621 628 | 1.5 | 1000 | 100L |
| DL 3 & DL 4 | G1 1/4" | 430 | 389 | 20 | 42 | 140 | 4x12 | 148.5 | 228 | 315 | 190 | 154 | 18 | 541 545 | 0.75 | 1000 | 90S |
| | G1 1/4" | 430 | 389 | 20 | 42 | 140 | 4x12 | 148.5 | 228 | 315 | 190 | 154 | 18 | 541 545 | 1.1 | 1500 | 90S |
| | G1 1/4" | 456 | 416 | 20 | 42 | 140 | 4x12 | 148.5 | 228 | 320 | 190 | 154 | 18 | 596 600 | 1.1 | 1000 | 90L |
| | G1 1/4" | 456 | 416 | 20 | 42 | 140 | 4x12 | 148.5 | 228 | 320 | 190 | 154 | 18 | 596 600 | 1.5 | 1500 | 90L |
| | G1 1/4" | 530 | 490 | 20 | 42 | 140 | 4x12 | 147.5 | 227 | 384 | 225 | 160 | 32.5 | 645 649 | 1.5 | 1000 | 100L |
| | G1 1/4" | 530 | 490 | 20 | 42 | 140 | 4x12 | 147.5 | 227 | 384 | 225 | 160 | 32.5 | 645 649 | 2.2 | 1000 | 100L |
| DL5 | G1 1/4" | 430 | 389 | 20 | 42 | 140 | 4X12 | 148.5 | 228 | 315 | 190 | 154 | 18 | 562 | 1.1 | 1500 | 90S |
| DL 5 & DL 6 | G1 1/4" | 456 | 416 | 20 | 42 | 140 | 4x12 | 148.5 | 228 | 320 | 190 | 154 | 18 | 617 625 | 1.1 | 1000 | 90L |
| | G1 1/4" | 456 | 416 | 20 | 42 | 140 | 4x12 | 148.5 | 228 | 320 | 190 | 154 | 18 | 617 625 | 1.5 | 1500 | 90L |
| | G1 1/4" | 530 | 490 | 20 | 42 | 140 | 4x12 | 147.5 | 227 | 384 | 225 | 160 | 32.5 | 662 675 | 1.5 | 1000 | 100L |
| | G1 1/4" | 530 | 490 | 20 | 42 | 140 | 4x12 | 147.5 | 227 | 384 | 225 | 160 | 32.5 | 662 675 | 2.2 | 1500 | 100L |
| | G1 1/4" | 530 | 490 | 20 | 42 | 140 | 4x12 | 147.5 | 227 | 384 | 225 | 160 | 32.5 | 662 675 | 3 | 1500 | 100L |
| | G1 1/4" | 530 | 490 | 20 | 42 | 140 | 4x12 | 147.5 | 227 | 392 | 224 | 190 | 17 | 708 716 | 2.2 | 1000 | 112M |
| | G1 1/4" | 530 | 490 | 20 | 42 | 140 | 4X12 | 147.5 | 227 | 392 | 224 | 190 | 17 | 708 716 | 4 | 1500 | 112M |
| | G1 1/4" | 570 | 530 | 20 | 42 | 140 | 4x12 | 167.5 | 247 | 447 | 280 | 216 | 32 | 756 764 | 3 | 1000 | 132S |
| | G1 1/4" | 570 | 530 | 20 | 42 | 140 | 4x12 | 167.5 | 247 | 447 | 280 | 216 | 32 | 756 764 | 5.5 | 1500 | 132S |
| | G1 1/4" | 609 | 569 | 20 | 42 | 140 | 4x12 | 167.5 | 247 | 392 | 280 | 216 | 32 | 786 794 | 4 | 1000 | 132M |
| | G1 1/4" | 609 | 569 | 20 | 42 | 140 | 4x12 | 167.5 | 247 | 392 | 280 | 216 | 32 | 786 794 | 5.5 | 1000 | 132M |
| | G1 1/4" | 609 | 569 | 20 | 42 | 140 | 4x12 | 167.5 | 247 | 392 | 280 | 216 | 32 | 786 794 | 7.5 | 1500 | 132M |
| | G1 1/4" | 695 | 655 | 20 | 42 | 140 | 4x12 | 195.5 | 275 | 547 | 320 | 254 | 33 | 896 904 | 7.5 | 1000 | 160M |
| | G1 1/4" | 695 | 655 | 20 | 42 | 140 | 4X12 | 195.5 | 275 | 547 | 320 | 254 | 33 | 896 904 | 11 | 150Q | 160M |
| DL 7 | G1 3/4" | 550 | 510 | 20 | 42 | 210 | 4X12 | 190.5 | 292 | 436 | 215 | 150 | 32.5 | 720 | 3 | 1500 | 100L |
| DL 7 & DL 8 | G1 3/4" | 550 | 510 | 20 | 42 | 140 | 4X12 | 185.5 | 287 | 440 | 270 | 205 | 32.5 | 761 771 | 2.2 | 1000 | 112M |
| | G1 3/4" | 550 | 510 | 20 | 42 | 140 | 4x12 | 185.5 | 287 | 440 | 270 | 205 | 32.5 | 761 771 | 4 | 1500 | 112M |
| | G1 3/4" | 560 | 520 | 20 | 42 | 140 | 4x12 | 185.5 | 287 | 475 | 280 | 240 | 20 | 808 818 | 3 | 1000 | 132S |
| | G1 3/4" | 560 | 520 | 20 | 42 | 140 | 4x12 | 185.5 | 287 | 475 | 280 | 240 | 20 | 808 818 | 5.5 | 1500 | 132S |
| | G1 3/4" | 600 | 560 | 20 | 42 | 140 | 4x12 | 186.5 | 288 | 476 | 280 | 230 | 25 | 838 848 | 4 | 1000 | 132M |
| | G1 3/4" | 600 | 560 | 20 | 42 | 140 | 4x12 | 186.5 | 288 | 476 | 280 | 230 | 25 | 838 848 | 5.5 | 1000 | 132M |
| | G1 3/4" | 600 | 560 | 20 | 42 | 140 | 4x12 | 186.5 | 288 | 476 | 280 | 230 | 25 | 838 848 | 7.5 | 1500 | 132M |
| | G1 3/4" | 710 | 670 | 20 | 42 | 140 | 4X12 | 185.5 | 287 | 547 | 319 | 254 | 32.5 | 948 958 | 7.5 | 1000 | 160M |
| G1 3/4" | 710 | 670 | 20 | 42 | 210 | 4X12 | 185.5 | 287 | 547 | 319 | 254 | 32.5 | 948 958 | 11 | 1500 | 160M | |

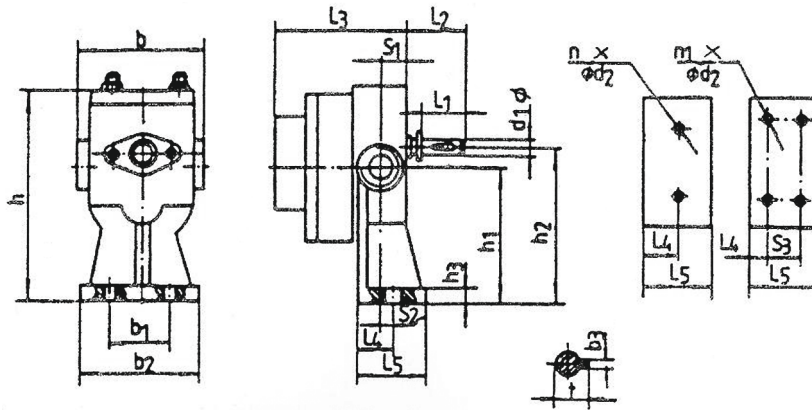


| TIPUL POMPEI | a | b | e | h | m | n | 4xØd | r | H | L | Putere | Turație | Gabarit |
|-------------------|------|-----|----|-------|-----|-----|------|----|-----|--------------|--------|---------|---------|
| | mm | mm | mm | mm | mm | mm | | mm | mm | mm | kW | rpm | |
| DL 9 | 790 | 750 | 45 | 222.5 | 280 | 200 | 4X12 | 40 | 521 | 1039 | 4 | 1000 | 132M |
| DL 9 & DL10 | 790 | 750 | 45 | 222.5 | 280 | 200 | 4X12 | 40 | 521 | 1039 1051 | 5.5 | 1000 | 132M |
| | 870 | 830 | 45 | 222.5 | 370 | 310 | 4x12 | 30 | 593 | 1147 1159 | 7.5 | 1000 | 160M |
| DL10 | 915 | 875 | 45 | 222.5 | 370 | 310 | 4x12 | 30 | 593 | 1189 | 11 | 1000 | 160L |
| | 1000 | 960 | 45 | 223.5 | 400 | 318 | 4x12 | 41 | 645 | 1319 | 18.5 | 1000 | 200L |
| | 1000 | 960 | 45 | 223.5 | 400 | 318 | 4x12 | 41 | 645 | 1319 | 22 | 1000 | 200L |

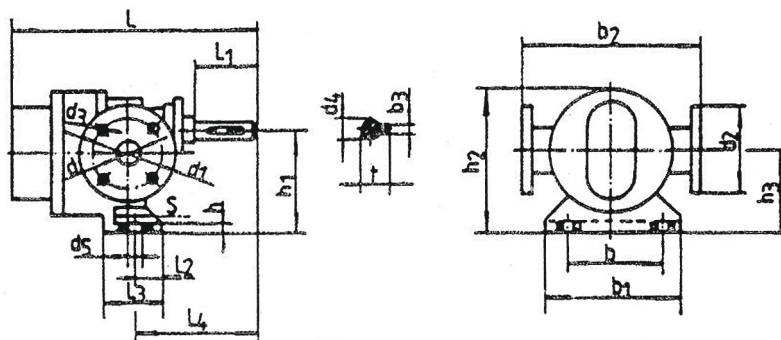


| TIPUL POMPEI | a | b | c | e | h | m | n | 6xØd | r | H | L | Putere | Turație | Gabarit |
|--------------|------|-------|-------|----|-------|-----|-----|------|----|-------|------|--------|---------|---------|
| | mm | mm | mm | mm | mm | mm | mm | | mm | mm | mm | kW | rpm | |
| DL 11 | 1031 | 495.5 | 495.5 | 80 | 257.5 | 290 | 210 | 6X12 | 40 | 557 | 1136 | 5.5 | 1000 | 132M |
| | 1125 | 550 | 535 | 45 | 222.5 | 370 | 310 | 6X12 | 30 | 593 | 1249 | 7.5 | 1000 | 160M |
| | 1161 | 550 | 571 | 45 | 222.5 | 370 | 310 | 6X12 | 30 | 593 | 1279 | 11 | 1000 | 160L |
| | 1200 | 580 | 580 | 45 | 222.5 | 370 | 310 | 6X12 | 30 | 603 | 1348 | 15 | 1000 | 180L |
| | 1242 | 650 | 552 | 45 | 222.5 | 400 | 320 | 6X12 | 40 | 645 | 1406 | 18.5 | 1000 | 200L |
| DL 12 | 1070 | 500 | 530 | 45 | 222.5 | 280 | 200 | 6X12 | 40 | 521 | 1151 | 5.5 | 1000 | 132M |
| | 1146 | 550 | 556 | 45 | 222.5 | 370 | 310 | 6X12 | 30 | 593 | 1259 | 6.5 | 1000 | 160M |
| | 1185 | 550 | 595 | 45 | 222.5 | 370 | 310 | 6X12 | 30 | 593 | 1289 | 11 | 1000 | 160L |
| | 1227 | 550 | 637 | 45 | 222.5 | 370 | 310 | 6X12 | 30 | 603 | 1358 | 15 | 1000 | 180L |
| | 1269 | 674 | 555 | 45 | 222.5 | 400 | 320 | 6X12 | 40 | 643.5 | 1416 | 18.5 | 1000 | 200L |
| | 1269 | 674 | 555 | 45 | 222.5 | 400 | 320 | 6X12 | 40 | 643.5 | 1416 | 22 | 1000 | 200L |

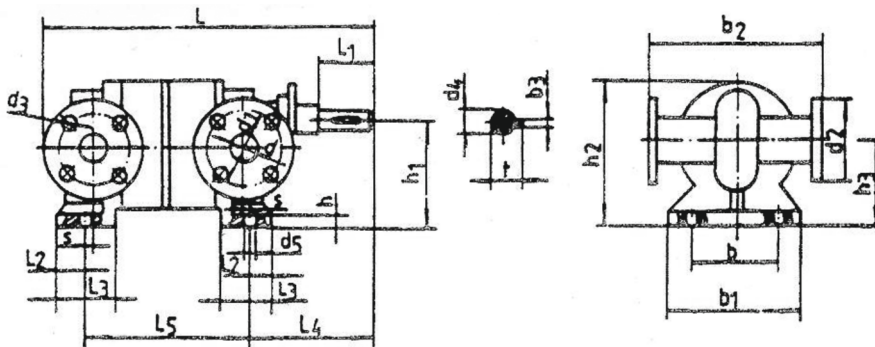
CARACTERISTICI DIMENSIONALE



| TIPUL POMPEI | Dn | b mm | b1 mm | b2 mm | b3 mm | d1 mm | h mm | h1 mm | h2 mm | h3 mm | L1 mm | L2 mm | L3 mm | L4 mm | L5 mm | S1 mm | S2 mm | S3 mm | n | n1 | t mm | Greutate kg |
|--------------|---------|------|-------|-------|-------|-------|--------|-------|-------|-------|-------|-------|-------|-------|-------|-------|-------|-------|---|----|------|-------------|
| DL 1 | G3/4" | 110 | 55 | 100 | 4 | 12 | 147.75 | 87 | 100 | 15 | 30 | 72 | 130 | 31 | 55 | 21 | 10 | - | 2 | - | 13.5 | 9 |
| DL 2 | G3/4" | 110 | 55 | 100 | 4 | 12 | 147.75 | 87 | 100 | 15 | 30 | 72 | 137 | 31 | 55 | 21 | 10 | - | 2 | - | 13.5 | 10 |
| DL 3 | G1 1/4" | 140 | 65 | 120 | 6 | 20 | 170 | 90.5 | 112 | 18 | 50 | 93 | 133 | 32 | 65 | 29 | 6 | - | 2 | - | 22.5 | 13 |
| DL 4 | G1 1/4" | 140 | 65 | 120 | 6 | 20 | 170 | 90.5 | 112 | 18 | 50 | 93 | 137 | 32 | 65 | 29 | 6 | - | 2 | - | 22.5 | 14 |
| DL 5 | G1 1/4" | 140 | 65 | 120 | 6 | 20 | 170 | 90.5 | 112 | 18 | 50 | 93 | 154 | 32 | 65 | 29 | 6 | - | 2 | - | 22.5 | 15 |
| DL 6 | G1 1/4" | 140 | 65 | 120 | 6 | 20 | 170 | 90.5 | 112 | 18 | 50 | 93 | 162 | 32 | 65 | 29 | 6 | - | 2 | - | 22.5 | 16 |
| DL 7 | G1 3/4" | 210 | 120 | 180 | 8 | 25 | 230 | 128.5 | 160 | 19 | 55 | 114 | 187 | 35 | 90 | 33.5 | 1.5 | 35 | - | 4 | 28 | 28 |
| DL 8 | G1 3/4" | 210 | 120 | 180 | 8 | 25 | 230 | 128.5 | 160 | 19 | 55 | 114 | 197 | 35 | 90 | 33.5 | 1.5 | 35 | - | 4 | 28 | 34 |



| TIPUL POMPEI | b mm | b1 mm | b2 mm | b3 mm | d mm | d1 mm | d2 mm | d3 mm | d4 mm | d5 mm | h mm | h1 mm | h2 mm | h3 mm | L mm | L1 mm | L2 mm | L3 | L4 | S | t mm | Greutate kg |
|--------------|------|-------|-------|-------|------|-------|-------|-------|-------|-------|------|-------|-------|-------|------|-------|-------|-----|-----|----|------|-------------|
| DL 9 | 180 | 265 | 340 | 12 | 65 | 145 | 180 | 18 | 42 | 22 | 25 | 200 | 285 | 157.5 | 488 | 110 | 60 | 120 | 255 | 12 | 45 | 76 |
| DL10 | 180 | 265 | 340 | 12 | 65 | 145 | 180 | 18 | 42 | 22 | 25 | 200 | 285 | 157.5 | 500 | 110 | 60 | 120 | 255 | 12 | 45 | 80 |



| TIPUL POMPEI | b mm | b1 mm | b2 mm | b3 mm | d mm | d1 mm | d2 mm | d3 mm | d4 mm | d5 mm | h mm | h1 mm | h2 mm | h3 mm | L mm | L1 mm | L2 mm | L3 | L4 | L5 mm | S | t mm | Greutate kg |
|--------------|------|-------|-------|-------|------|-------|-------|-------|-------|-------|------|-------|-------|-------|------|-------|-------|-----|-----|-------|----|------|-------------|
| DL11 | 180 | 265 | 340 | 12 | 65 | 145 | 180 | 18 | 42 | 22 | 25 | 200 | 285 | 157.5 | 591 | 110 | 60 | 120 | 256 | 254 | 12 | 45 | 126 |
| DL12 | 180 | 265 | 340 | 12 | 65 | 145 | 180 | 18 | 42 | 22 | 25 | 200 | 285 | 157.5 | 601 | 110 | 60 | 120 | 256 | 278 | 12 | 45 | 134 |