

SURFACES

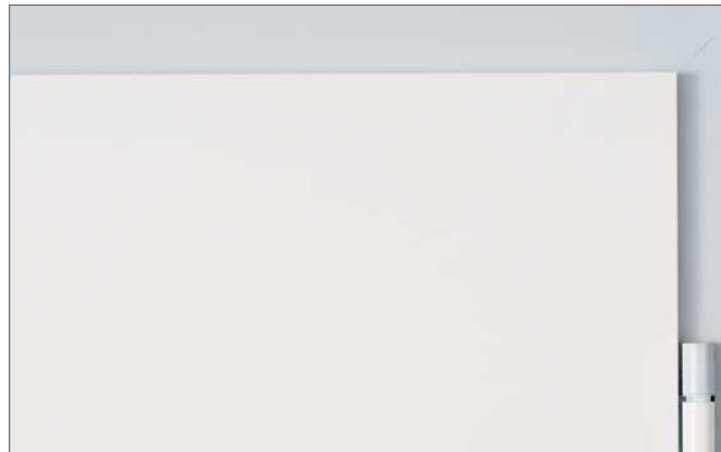
Surfaces

However you design your rooms, Domoferm door elements fit everywhere. Whether in STANDARD for individual design, PRISMA with a multitude of color combinations, or STAINLESS for extreme areas – the surface of the element is pivotal to the whole design



STANDARD

STANDARD - is the prime coated surface designed for individual style after installation. It is the right surface type when installed in the structural work phase and the ceiling is painted after the building has been finished.



PRISMA®

DOMOFERM steel door elements can be powder coated in numerous RAL and special color tones (DB, NCS) on request. Thus, the elements receive a ready-given surface that does not require after-treatment. These doors are optimized for later installation in all conventional wall systems.

STAINLESS

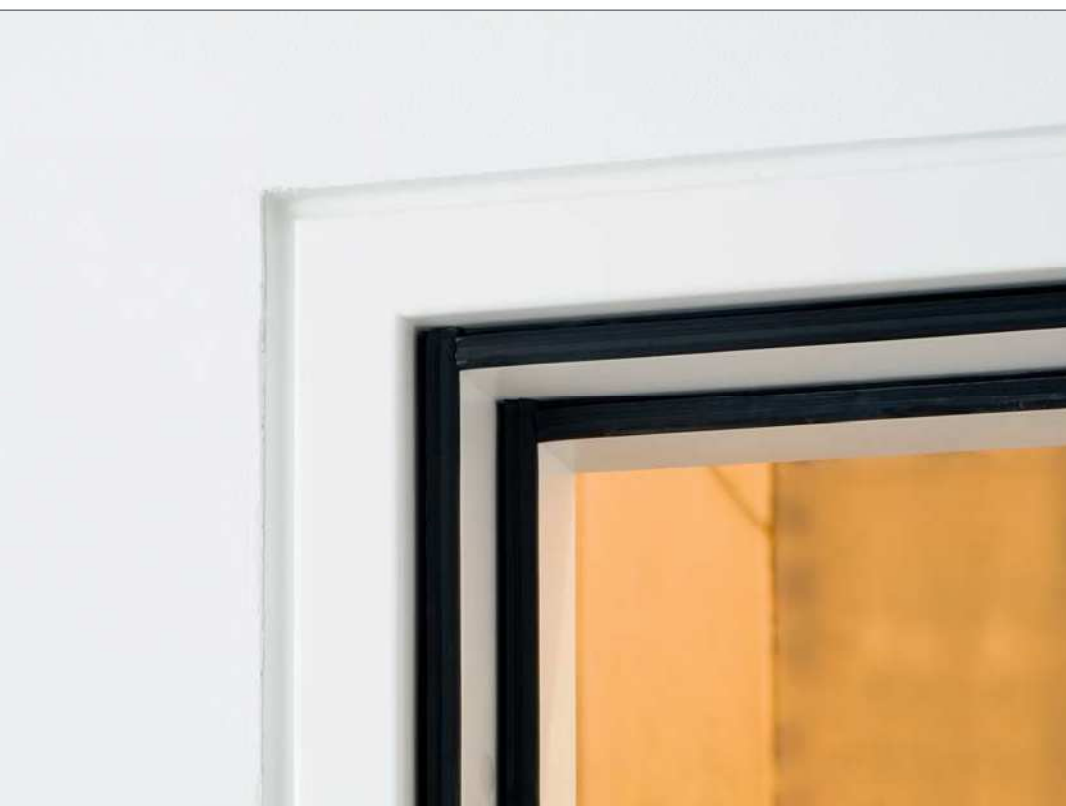
Door elements in stainless steel send a visual statement. They are also used when durability is required in moist or hostile surroundings and in areas where high hygiene standards are required, such as in hospitals or the food industry.



FRAMES

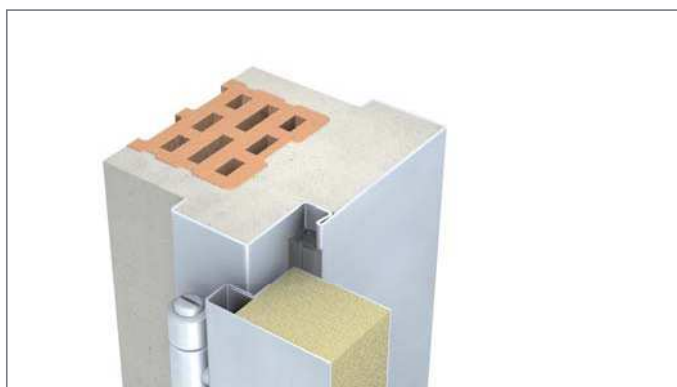
Open for every use

DOMOFERM steel frames fulfill the highest quality standards according to the latest levels of technology. All frames are made of galvanized steel. Whether as practical two-part frames for later installation for all types of walls, for wall installations, or for dry interior fittings – everything that can be done technically, DOMOFERM can do it!



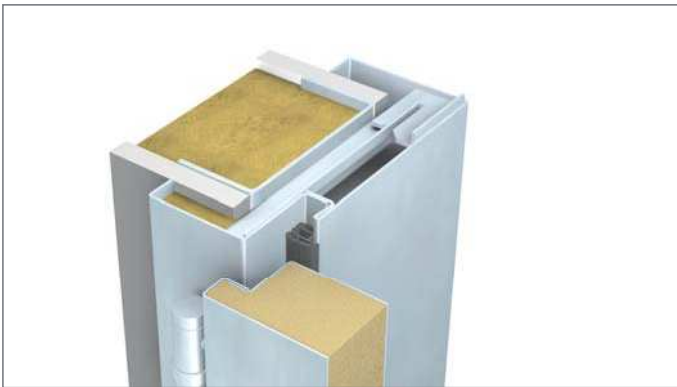
WALL INSTALLATION

With existing openings in solid walls, the frame is put into the opening and the cavities between frame and wall are then filled with mortar, for example. The STANDARD surface (with prime coating) is particularly well suited to wall installation when the final layer of coating is put on after mounting.



GYPSUM WALL INSTALLATION

The frames are installed together with the wall system. DOMOFERM surround frames are fitted with hat anchors which help to fix the frame to the substructure safely. Positioning, type and number of retaining brackets depends on additional requirements, such as size, wall structure, profile size and fire protection regulations.

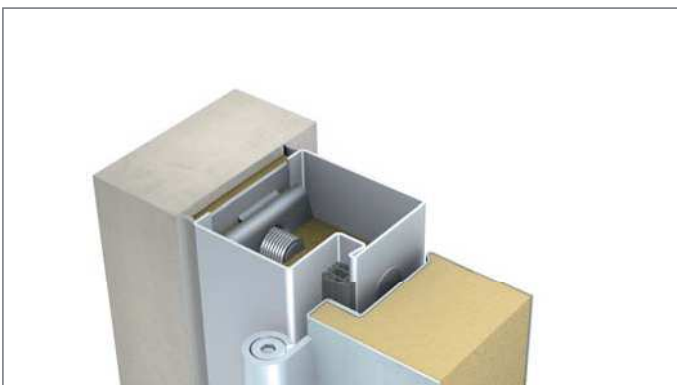
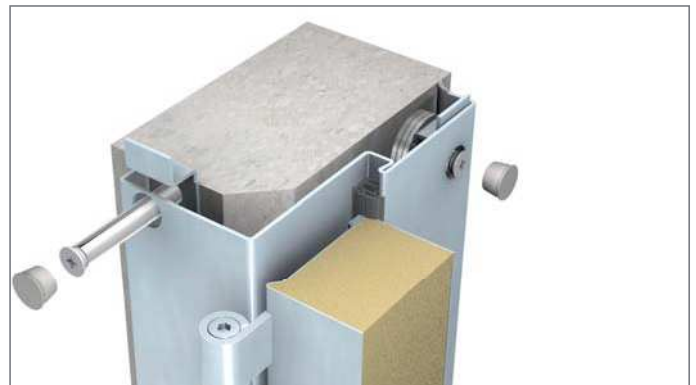


TWO PART SPLIT FRAMES

This frames for later installation can be used in most-wall systems. The wall opening is finished and the frame installed at a later time. The invisible screw connection of the frame profiles, the simple backfill options – even for fire protection doors -- as well as the solid installation in the wall -- make this frame a true multi-talent.

PLUG-AND-SCREW CORNER FIX FRAME

Whether quick installation without using mortar or fair-faced brickwork - the plug-and-screw corner fix frame is a simple and elegant solution for many wall systems. This frame can be mounted without backfill for fire protection doors for fire resistance according to the regulations of each country. Installation is quick and clean and guarantees a solid wall fix, resistant to twisting.



BUTTED FRAME

This frame is installed in the reveal or between walls running parallel to each other. A special balance screw in the anchor is responsible for the perfect fit of the frames, even without the tedious work of putting blocks between spaces. Very elegant when combined with the PRESTIGE door, once the door is flush in the frame on both sides.

HINGE SYSTEMS

What really counts:

The optimal hinge system for door elements is dependent on criteria such as door-leaf size, door-leaf weight, the arrangement of the hinges and the location of element used. DOMOFERM steel-door elements provide an optimal hinge system, designed to suit the form, color and material quality of the given object depending on the requirements stated and the design.



TWO-PART ANUBA HINGE

This hinge is standard issue for interior doors used in less frequented areas or residential buildings. The option to alter the screw depth makes two-dimensional adjustments possible. The two-part Anuba hinge is standard for installation.



THREE-PART ANUBA HINGE

This hinge installed on all UNIVERSAL fire protection doors ensures the long-term hold of the door leaf in the frame. The double bolting with the door leaf and the locking pin provide a sturdy solution for long-term use. The system is also available for multi-functional doors.



DIN HINGES

Doors in the UNIVERSAL series can be fitted optionally with DIN hinges. Available in a two-part V8120 DIN hinge and a three-part V8026 DIN hinge. The galvanized and nickel-plated hinge systems can be adjusted two-dimensionally.

VX-OBJECT HINGE

The galvanized object hinges VX 100 and VX 160 are standard on all DOMORERM unrebated and heavy doors. They are easy to adjust three-dimensionally without having to unhinge the door leaf. Easy to use with large and heavy doors in highly frequented areas, it has become the standard in construction. The easy-to-maintain design guarantees the long durability of the entire element.



OPTIONAL DESIGN

The alternative design of hinge systems in stainless steel combined with high-quality lever-handle systems puts an emphasis on elegance. The hinges are also available in the RAL colors of your choice on request.

EQUIPMENT



PANIC SYSTEMS

The fitting for escape doors are subject to uniform regulations in Europe. In addition to exact rules on design and the function of hinges, locks, hinges and mounting accessories have to be tested together and must only be used as tested unit.

We offer tested emergency exit systems according to EN 179 and EN 1125.

CABLE LOOP

A cable loop is required when a function in the door leaf (e.g. electromechanical lock) has to be controlled electronically. It provides a protected loop for safe wiring from the frame to the door leaf. The casing and spiral hose wraps are made from stainless steel and are sabotage-resistant when the door is locked. Optional extras for cable loops for frames and door leaves should be taken into consideration during the planning phase.



LOWERED FLOOR SEAL

This feature is a special seal for increased sound proofing and functional smoke protection, directly integrated into the door leaf. The seal is lifted and lowered when the door is opened or closed. The Schall-ex seal complies with EI₂ fire and smoke protection regulations.



DOOR CLOSER

It is obligatory that door elements are always self-closing for fire-protection doors to receive official approval. Door closers, and additional closing coordinators in double-leaf doors, guarantee this self-closing mechanism works smoothly. This ensures safe and long-term functionality combined with a high level of closing force.

SPRING HINGE

The spring hinge has an integrated automatic closing function. The closing force can be adjusted by preloading the spring. The ECONOMY and REGULAR door lines include a spring and height-adjustable constructional hinge (± 2.5 mm).



DOMOFERM TS 50

The DOMOFERM door closer TS50 with projecting arm has an elegant look thanks to its stainless steel faceplate and new design. Its closing force, closing and door velocity can be adjusted separately. It is, therefore, a great solution for steel and fire protection door elements.

DOMOFERM TS 61

The DOMOFERM slide channel door closer TS61 catches the eye with its elegant design thanks to its stainless steel cover. Closing force and closing, as well as door velocity, can be regulated separately. For conventional installation, the door closer is mounted onto the door leaf and the slide channel to the frame.



LEVER HANDLE

The lever handle is the signature feature of every door. Trendy handles and fittings integrate optimally into the ambiance of your rooms. Whether rosette or short plate, standard handles or designer handles, in color or stainless steel – we manufacture quality handles according to your desires – a great way to complete your individual door.



Standard handle set

Aluminium satin finish

Stainless steel satin finish

All DOMOFERM door elements are delivered with standard handles. Fire protection doors have to be fitted with certified lever handles. Alternatively, inexpensive DOMOFERM handles are available in Aluminium and stainless steel with satin finish.



Stainless steel satin finish

Aluminium satin finish

Handle set in RAL

You can order DOMOFERM doors without pre-drilling to use DOMOFERM rosette handle sets or handles by other manufacturers.



VISION PANELS

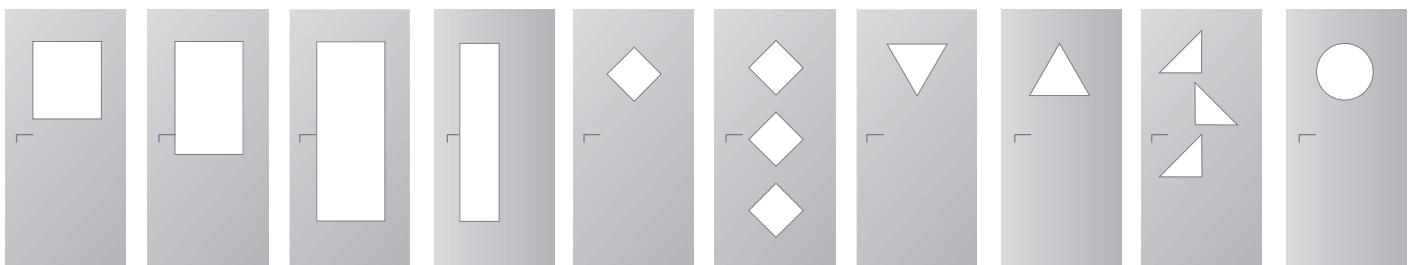
A variety of vision panels provide the visual structure and put your door in the right light. Types of vision panels are dependent on the respective product line, surface and design, as well as its fire protection certification, among other things.

Bull's eye glazing plays a major role in modern architecture.



Vision panels provide the visual structure and put your door in the right light.

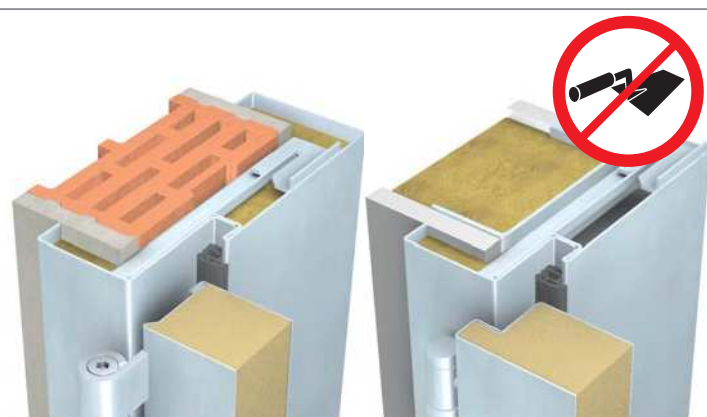
Vision panels can be ideally combined with fixed glazing. Frame geometry and surface can be customized and will harmonize perfectly.



INSTALLATION ADVANTAGES

YOU CAN BENEFIT FROM OUR COMPREHENSIVE INSTALLATION ADVANTAGES.

Steel fire protection doors by DOMOFERM provide decisive manufacturing and cost advantages on installation. Our developments simplify frame and door-leaf installation significantly and save time and money.



MORTARLESS BACKFILL

Meet our Fire Protection doors. You can backfill our frames with standard rock wool and gypsum board according to the fixing instruction - you do not need expensive special foam or even mortar backfill with our products.



SEPARATE FRAME DELIVERY

The separate delivery of the frame and door leaf makes quick advance delivery possible. Whether as part of the express-delivery program, or frames for special door leaves or due to a lack of space on site – there are many good reasons why advance delivery is necessary.

OPTIMAL ADJUSTMENT WITH 3D HINGES

Longevity and maintenance-friendliness are only two arguments in favor of 3D hinges. Easy adjustment guarantees perfect alignment of the door leaf in the frame and, thus, ensures functionality of all additional extras.



ADJUSTABLE

Steel door leaves can be shortened by up to 15 mm, on request.

DOOR LEAF WITHOUT PRE-DRILLING

Door leaves can be delivered without pre-drilling. This lets you decide whether to use them for short plate, long plate or rosette handle sets. Pre-drilling for your favourite handle set can be done on request.

