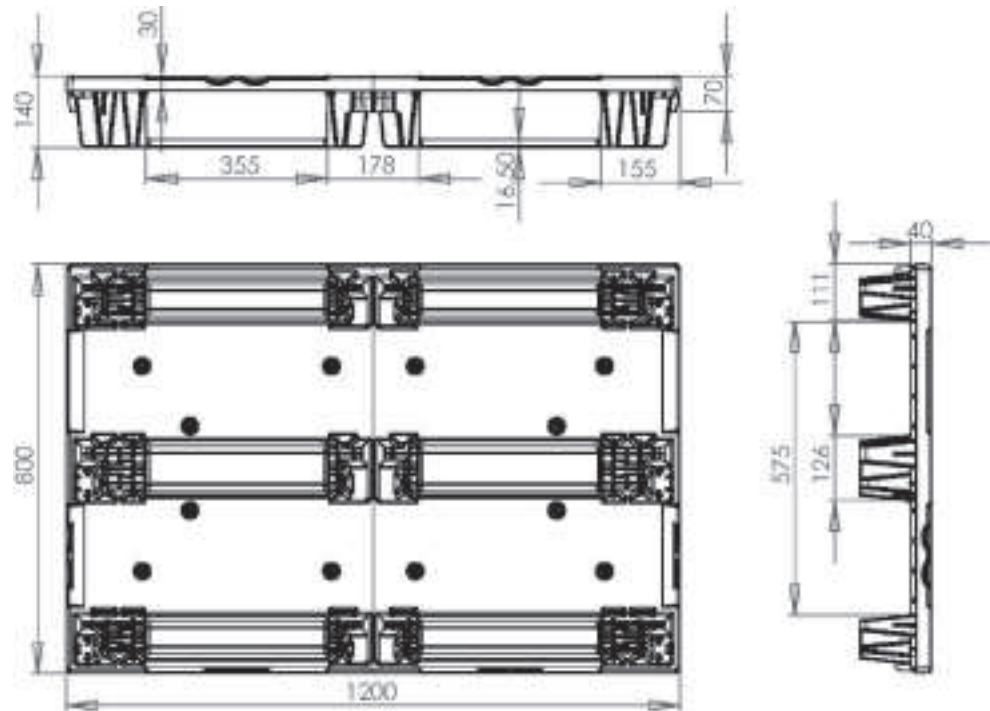


## technical drawing



## technical data sheet

**Description:** Nestable and rackable pallet, with closed deck, with or without rims of 7 mm.  
Mono-block pallet: the SmartFlow pallet is moulded in one piece.

**Dimensions:** Length: 1200 mm / Width: 800 mm / Height: 140 mm

**Option:** Extra rims (7mm) give more stability to your load.  
Anti-slip grommets

**Weight:** 7,5 kg (+/- 2%)

**Raw materials:** PPC recycled or virgin

**Mechanical resistance\*:** Static: 1200 kg / Dynamic: 800 kg / In rack: 400 kg

**Hygienic:** Easy to clean because of the open structure.  
This pallet is not porous and does not absorb any liquid.

**Environment:** This pallet is fully recyclable.

	Pallets per stack	Number of stacks	Total
Standard lorry:	35	33	1155

\* The mechanical resistance is measured with a filmed load, equally divided over the pallet surface.

SmartFlow EUROPE SA

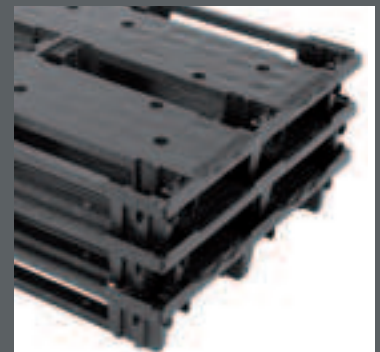
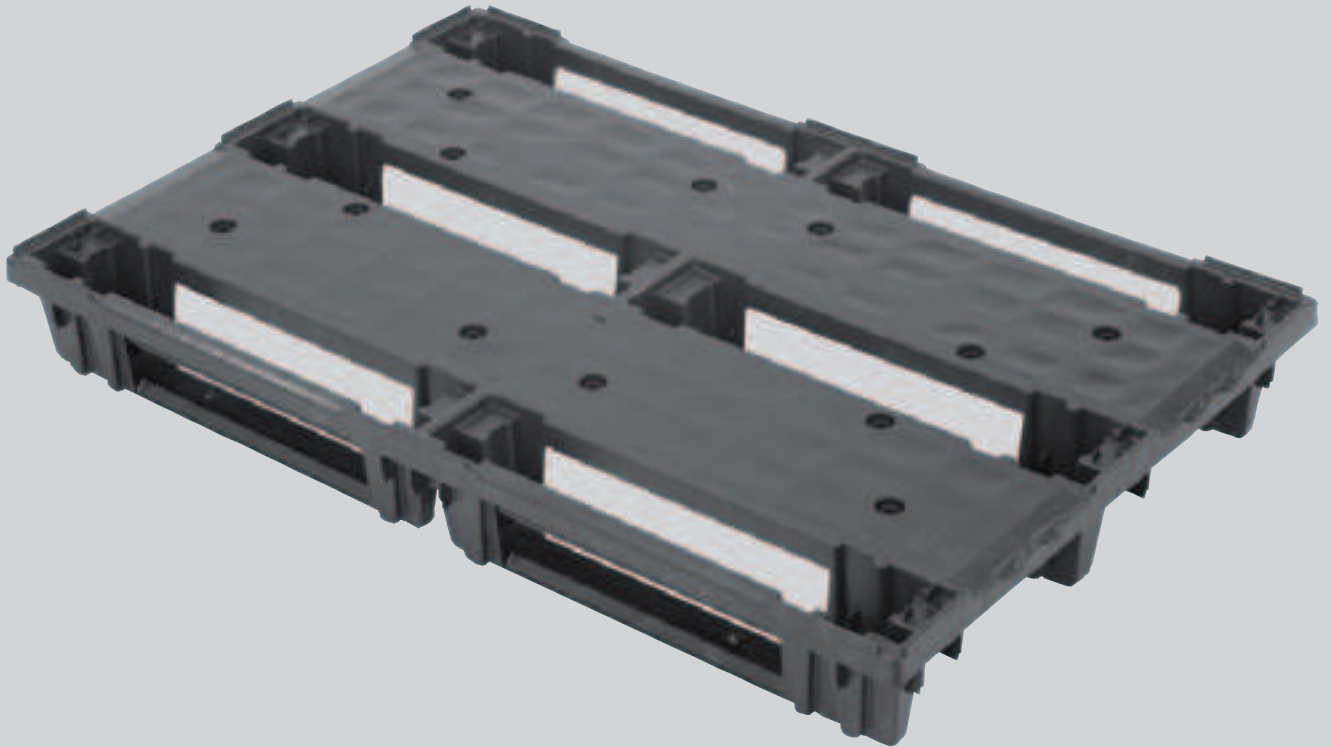
rue du Plavitout 133 - 7700 Mouscron, Belgium  
T. +32 (0) 56 28 26 90 - F +32 (0) 56 28 26 99  
info@smart-flow.com - www.smart-flow.com

pallet

1200x800

nestable & rackable

article ref: SF 800 NR



**SmartFlow**  
plastic pallets / containers / bins&crates **EUROPE**