

Cost effective
storage for
cereals...

...throughout
the world



The **CIE**
range of
storage silos



Standard Features



Model 8-27 CIE silos feature a galvanised steel support frame & incorporate a roof inspection hatch as standard. Special Polyester Coated roof available at extra cost.

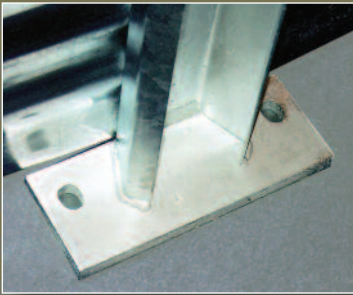


Up to Model 10 CIE silos feature a ribbed roof.

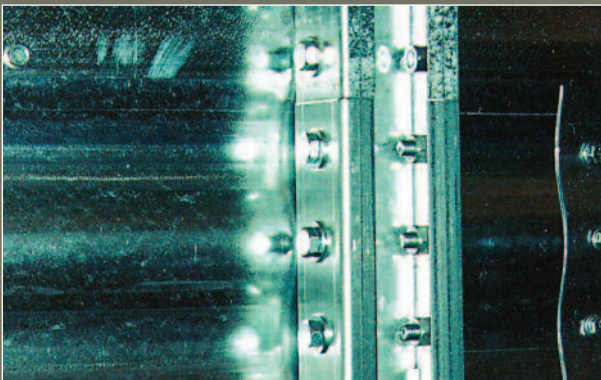
Shallow form (119mm pitch) corrugated sidewall sheets are manufactured from high quality galvanised 450 grammes/m² (including both sides) minimum spangle steel. Fixings incorporate a formed bolt head.



Single ring access doors, 1 supplied as standard, incorporate hot dipped galvanised steel frame. Various designs to suit specific silo heights are available.



External galvanised stiffeners/anchors are supplied in a variety of specifications dependant upon the silo diameter and height, stiffeners are joined by formed fishplates.



Options



Various width catwalks, access ladders & rest platforms designed & manufactured to European Standards.



The European manufactured CIE Silo from Chief Industries UK Ltd designed to meet the requirements of DIN 1055, provides a cost effective solution for the storage of a wide range of cereals throughout the world.

Design Criteria & Standard Specifications

The cylindrical barrel is designed for storage of free flowing granular material with a maximum density based on maize at 900kg/m³, friction angle of 30 degrees and angle of repose of 28 degrees, and on barley a density of 825kg/m³, friction angle of 27 degrees, according to DIN1055.

Sidewall: High quality European steel Fe E350G. (350N/mm²) with standard galvanised finish of 450 grammes/m², G140 (incl. both sides).

Roof: As standard manufactured from Aluzinc AZ185,

also available with Polyester Coated brown finish.

Stiffeners/Anchors: High quality European steel Fe E350G (350N/mm²) with a standard galvanising finish of 350 grammes/m², G115, or in the case of welded anchors, hot dipped galvanised.

Fixings: Type 6/8 or 8/8, Z20 with seal washer.

Useful (pitch) length of wall sheet: 2.8 metres

Useful (pitch) height of wall sheet: 0.838 metres

Roof angle: 25°

Capacity in tonnes

| Model | | 4 | 5 | 6 | 7 | 8 | 9 | 10 | 11 | 12 | 13 | 14 | 15 | 16 | 17 | 18 | 20 | 22 | 24 | 27 | |
|--|----------------------------|------|------|------|------|------|------|-------|-------|-------|-------|-------|-------|-------|-------|-------|-------|-------|-------|-------|--|
| CHIEF INDUSTRIES LTD | | | | | | | | | | | | | | | | | | | | | |
| Diameter metres | | 3.57 | 4.46 | 5.35 | 6.24 | 7.13 | 8.02 | 8.91 | 9.80 | 10.70 | 11.59 | 12.48 | 13.37 | 14.26 | 15.15 | 16.04 | 17.83 | 19.61 | 21.39 | 24.06 | |
| No of rings | Eaves Height metres | | | | | | | | | | | | | | | | | | | | |
| | Roof height metres | 0.99 | 1.19 | 1.41 | 1.63 | 1.85 | 2.05 | 2.30 | 2.49 | 2.70 | 2.90 | 3.16 | 3.36 | 3.57 | 3.78 | 3.96 | 4.38 | 4.73 | 5.18 | 5.82 | |
| Capacity in tonnes based on uncompacted grain @ 780kg/m³ | | | | | | | | | | | | | | | | | | | | | |
| 4 | 3.35 | 28 | 44 | 66 | 91 | 121 | 156 | 196 | 242 | 293 | 349 | 412 | 480 | 555 | 637 | 725 | 922 | 1,148 | 1,405 | 1,852 | |
| 5 | 4.19 | 34 | 55 | 80 | 111 | 147 | 189 | 237 | 291 | 351 | 418 | 492 | 572 | 660 | 754 | 857 | 1,085 | 1,345 | 1,640 | 2,149 | |
| 6 | 5.03 | 41 | 65 | 95 | 131 | 173 | 222 | 278 | 340 | 410 | 487 | 572 | 664 | 764 | 872 | 989 | 1,248 | 1,543 | 1,875 | 2,447 | |
| 7 | 5.87 | 47 | 75 | 110 | 151 | 199 | 255 | 319 | 390 | 469 | 556 | 651 | 756 | 868 | 990 | 1,121 | 1,411 | 1,740 | 2,110 | 2,744 | |
| 8 | 6.70 | 54 | 85 | 124 | 171 | 226 | 288 | 359 | 439 | 528 | 625 | 731 | 847 | 973 | 1,108 | 1,253 | 1,574 | 1,937 | 2,345 | 3,041 | |
| 9 | 7.54 | 60 | 95 | 139 | 191 | 252 | 321 | 400 | 488 | 586 | 694 | 811 | 939 | 1,077 | 1,226 | 1,385 | 1,737 | 2,135 | 2,579 | 3,339 | |
| 10 | 8.38 | 67 | 106 | 154 | 211 | 278 | 354 | 441 | 538 | 645 | 763 | 891 | 1,031 | 1,182 | 1,344 | 1,517 | 1,900 | 2,332 | 2,814 | 3,636 | |
| 11 | 9.22 | 73 | 116 | 168 | 231 | 304 | 387 | 482 | 587 | 704 | 832 | 971 | 1,123 | 1,286 | 1,461 | 1,649 | 2,063 | 2,530 | 3,049 | 3,933 | |
| 12 | 10.06 | 80 | 126 | 183 | 251 | 330 | 420 | 523 | 636 | 762 | 901 | 1,051 | 1,214 | 1,390 | 1,579 | 1,782 | 2,227 | 2,727 | 3,284 | 4,230 | |
| 13 | 10.89 | 86 | 136 | 198 | 271 | 356 | 453 | 563 | 686 | 821 | 969 | 1,131 | 1,306 | 1,495 | 1,697 | 1,914 | 2,390 | 2,924 | 3,519 | 4,528 | |
| 14 | 11.73 | 93 | 146 | 212 | 291 | 382 | 487 | 604 | 735 | 880 | 1,038 | 1,211 | 1,398 | 1,599 | 1,815 | 2,046 | 2,553 | 3,122 | 3,754 | 4,825 | |
| 15 | 12.57 | 100 | 157 | 227 | 311 | 408 | 520 | 645 | 785 | 939 | 1,107 | 1,291 | 1,490 | 1,704 | 1,933 | 2,178 | 2,716 | 3,319 | 3,989 | 5,122 | |
| 16 | 13.41 | 106 | 167 | 242 | 331 | 434 | 553 | 686 | 834 | 997 | 1,176 | 1,371 | 1,581 | 1,808 | 2,051 | 2,310 | 2,879 | 3,516 | 4,224 | 5,420 | |
| 17 | 14.25 | 113 | 177 | 256 | 351 | 460 | 586 | 726 | 883 | 1,056 | 1,245 | 1,451 | 1,673 | 1,912 | 2,169 | 2,442 | 3,042 | 3,714 | 4,459 | 5,717 | |
| 18 | 15.08 | 119 | 187 | 271 | 371 | 487 | 619 | 767 | 933 | 1,115 | 1,314 | 1,531 | 1,765 | 2,017 | 2,286 | 2,574 | 3,205 | 3,911 | 4,694 | 6,014 | |
| 19 | 15.92 | 126 | 197 | 286 | 391 | 513 | 652 | 808 | 982 | 1,173 | 1,383 | 1,611 | 1,857 | 2,121 | 2,404 | 2,706 | 3,368 | 4,109 | 4,928 | 6,311 | |
| 20 | 16.76 | 132 | 208 | 300 | 411 | 539 | 685 | 849 | 1,031 | 1,232 | 1,452 | 1,691 | 1,948 | 2,225 | 2,522 | 2,839 | 3,532 | 4,306 | 5,163 | 6,609 | |
| 21 | 17.60 | | 218 | 315 | 431 | 565 | 718 | 890 | 1,081 | 1,291 | 1,521 | 1,770 | 2,040 | 2,330 | 2,640 | 2,971 | 3,695 | 4,503 | 5,398 | | |
| 22 | 18.44 | | 228 | 330 | 451 | 591 | 751 | 930 | 1,130 | 1,350 | 1,590 | 1,850 | 2,132 | 2,434 | 2,758 | 3,103 | 3,858 | 4,701 | 5,633 | | |
| 23 | 19.27 | | | 344 | 471 | 617 | 784 | 971 | 1,179 | 1,408 | 1,659 | 1,930 | 2,224 | 2,539 | 2,876 | 3,235 | 4,021 | 4,898 | 5,868 | | |
| 24 | 20.11 | | | 359 | 491 | 643 | 817 | 1,012 | 1,229 | 1,467 | 1,728 | 2,010 | 2,315 | 2,643 | 2,994 | 3,367 | 4,184 | 5,095 | 6,103 | | |
| 25 | 20.95 | | | | 511 | 669 | 850 | 1,053 | 1,278 | 1,526 | 1,797 | 2,090 | 2,407 | 2,747 | 3,111 | 3,499 | 4,347 | 5,293 | 6,338 | | |
| 26 | 21.79 | | | | 531 | 695 | 883 | 1,093 | 1,327 | 1,585 | 1,865 | 2,170 | 2,499 | 2,852 | 3,229 | 3,631 | 4,510 | 5,490 | 6,573 | | |
| 27 | 22.63 | | | | | 721 | 916 | 1,134 | 1,377 | 1,643 | 1,934 | 2,250 | 2,591 | 2,956 | 3,347 | 3,763 | 4,673 | 5,688 | 6,808 | | |
| 28 | 23.46 | | | | | 748 | 949 | 1,175 | 1,426 | 1,702 | 2,003 | 2,330 | 2,682 | 3,061 | 3,465 | 3,896 | 4,836 | 5,885 | 7,042 | | |
| 29 | 24.30 | | | | | | 982 | 1,216 | 1,475 | 1,761 | 2,072 | 2,410 | 2,774 | 3,165 | 3,583 | 4,028 | 5,000 | 6,082 | | | |
| 30 | 25.14 | | | | | | | 1,257 | 1,525 | 1,819 | 2,141 | 2,490 | 2,866 | 3,269 | 3,701 | 4,160 | 5,163 | 6,280 | | | |
| 31 | 25.98 | | | | | | | 1,297 | 1,574 | 1,878 | 2,210 | 2,570 | 2,958 | 3,374 | 3,819 | 4,292 | 5,326 | 6,477 | | | |
| 32 | 26.82 | | | | | | | 1,338 | 1,623 | 1,937 | 2,279 | 2,650 | 3,049 | 3,478 | 3,936 | 4,424 | 5,489 | 6,674 | | | |
| 33 | 27.65 | | | | | | | | 1,673 | 1,996 | 2,348 | 2,730 | 3,141 | 3,583 | 4,054 | 4,556 | 5,652 | 6,872 | | | |
| 34 | 28.49 | | | | | | | | 1,722 | 2,054 | 2,417 | 2,810 | 3,233 | 3,687 | 4,172 | 4,688 | 5,815 | 7,069 | | | |
| 35 | 29.33 | | | | | | | | | 2,113 | 2,486 | 2,889 | 3,325 | 3,791 | 4,290 | 4,821 | 5,978 | 7,267 | | | |

Note: Silo capacity based on total volume, cylinder plus roof, with angle of repose of 25 degrees, bulk density of uncompacted dry cereal at 780kg/m³. For alternative capacities, please refer to Chief Industries UK Ltd. Details of larger silos available on request.

Chief Industries UK Ltd offer the complete solution to your storage, handling, ventilation, drying and cleaning requirements.

Channel lock perforated galvanised steel floor. Designed to withstand the regular stress and strain of drying and aerating stored grain, together with unloading augers and recirculation devices. Arched design, providing a downward pressure forcing the sections tighter together when the grain is loaded on the floor. Smooth floor surfaces ensure easy cleaning.



Silo unloading systems for agricultural applications feature portable or fixed sweep/discharge augers with capacities up to 100t/h.



Permanent industrial sweep augers, with capacities up to 200t/h are supplied.



Ventilation systems suitable for casting in the concrete foundation or complete steel floors for higher air volumes can be supplied, together with temperature sensing systems.



Chief Industries manufacture and supply a wide range of portable, mobile and static fan units from 0.75kW to 37.0kW.



A full range of mechanical handling equipment including bucket elevators, chain & flight conveyors, & belt conveyors together with continuous flow dryers, cleaners and weighing systems are also offered by Chief Industries UK Limited.



CHIEF

CHIEF INDUSTRIES UK LTD.

Beckingham Business Park, Tolleshunt Major
Maldon, Essex CM9 8LZ, UK

Tel +44 (0)1621 868944
Fax +44 (0)1621 868955
E-mail sales@chief.co.uk
www.chief.co.uk

