



Material:

Domeniul temperaturii de utilizare:

Coeficient de permeabilitate la vapori:

Coeficient de conductibilitate termică:

Categoria de inflamabilitate:

Lungimea / culoare:

Izolatie din cauciuc sintetic, cu sistem celular compact, pentru sisteme de refrigerare, aer conditionat si de incalzire
-50 °C pana +105 °C

$\mu \geq 8.000$

$\lambda_{20^\circ\text{C}} = 0,034 \text{ W}/(\text{m}^*\text{K}) / \lambda_0^\circ\text{C} = 0,036 \text{ W}/(\text{m}^*\text{K})$

B-s3, d0

2 m / neagra

Tevi de cupru		Tevi de oțel			Grosimile de izolare tuburi								
					6 mm			9 mm			13 mm		
ext. Ø (mm)	DN (mm)	Inch	ext. Ø (mm)	DN (mm)	Tip	m / carton	Preț (€/m)	Tip	m / carton	Preț (€/m)	Tip	m / carton	Preț (€/m)
6	4				6 x 06	600	0,19	9 x 06	360	0,30	13 x 06	240	0,49
8	6				6 x 08	500	0,22	9 x 08	340	0,33	13 x 08	210	0,50
10	8	1/8	10,2	6	6 x 10	430	0,24	9 x 10	320	0,36	13 x 10	190	0,51
12	10				6 x 12	350	0,26	9 x 12	280	0,38	13 x 12	172	0,55
14/15	10	1/4	13,5	8	6 x 15	300	0,28	9 x 15	240	0,44	13 x 15	154	0,61
18	15	3/8	17,2	10	6 x 18	280	0,31	9 x 18	190	0,46	13 x 18	130	0,64
20					6 x 20	350	0,35	9 x 20	160	0,50	13 x 20	120	0,66
22	20	1/2	21,3	15	6 x 22	216	0,41	9 x 22	156	0,51	13 x 22	110	0,67
25			25,0		6 x 25	180	0,43	9 x 25	130	0,60	13 x 25	92	0,83
28	25	3/4	26,9	20	6 x 28	150	0,50	9 x 28	124	0,62	13 x 28	86	0,84
30	25		30,0		6 x 30	140	0,62	9 x 30	100	0,66	13 x 30	84	0,93
32								9 x 32	92	0,72	13 x 32	76	0,95
35	32	1	33,7	25	6 x 35	120	0,64	9 x 35	92	0,74	13 x 35	76	0,96
38	32		38,0					9 x 38	80	0,79	13 x 38	66	1,12
42	40	1 1/4	42,4	32				9 x 42	70	0,82	13 x 42	56	1,13
		1 1/2	48,3	40				9 x 48	60	0,95	13 x 48	48	1,27
54	50		54,0					9 x 54	60	1,12	13 x 54	46	1,58
57	50		57,0					9 x 57	60	1,28	13 x 57	44	1,70
		2	60,3	50				9 x 60	60	1,34	13 x 60	40	1,71
64			63,5					9 x 64	54	1,52	13 x 64	40	1,94
70			70,0					9 x 70	54	1,69	13 x 70	40	2,10
76,1	65	2 1/2	76,1	65				9 x 76	54	1,75	13 x 76	34	2,16
80								9 x 80	40	2,10	13 x 80	30	2,50
88,9	80	3	88,9	80				9 x 89	36	2,11	13 x 89	30	2,67
		3 1/2	101,6					9 x 102	28	3,11	13 x 102	30	3,91
108	100		108,0					9 x 108	28	3,40	13 x 108	28	4,08
114	100	4	114,3	100				9 x 114	28	3,56	13 x 114	28	4,25
			125,0					9 x 125	20	5,01	13 x 125	20	6,20
133	125		133,0					9 x 133	16	5,46	13 x 133	18	6,42
		5	139,7	125				9 x 140	16	5,47	13 x 140	18	6,54
159	150		160,0					9 x 160	14	6,10	13 x 160	16	7,39
Toleranta la grosime:					± 1,0 mm			± 1,5 mm			± 1,5 mm		
Toleranta la lungime: ± 1,5 %													

kaiflex® EF

Plăci roluite - latime: 1m



Domeniul temperaturii de utilizare: -50 °C pana +85 °C

Grosime (mm)	m²/rola	Preț (€/m²)	
		non-adeziv	auto-adeziv
6	30,0	4,24	7,33
10	20,0	5,80	8,90
13	14,0	7,42	10,51
16	12,0	9,02	12,12
19	10,0	10,13	13,38
25	8,0	13,99	17,08
32	6,0	17,74	20,83
Toleranta la grosime: 6 - 19 mm ± 1,0 mm / 25 - 32 mm ± 2,0 mm			
Toleranta la lungime: ± 1,5 %			



Material:

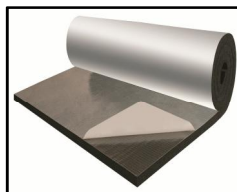
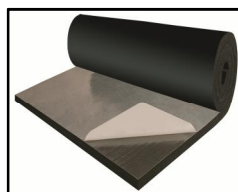
Domeniul temperaturii de utilizare:
 Coeficient de permeabilitate la vapori:
 Coeficient de conductibilitate termică:
 Categoria de inflamabilitate:
 Lungimea / culoare:

Izolatie din cauciuc sintetic, cu sistem celular compact,
 pentru sisteme de refrigerare, aer conditionat si de incalzire
 -50 °C pana +105 °C
 $\mu \geq 8.000$
 $\lambda_{20^\circ\text{C}} = 0,034 \text{ W/(m}\cdot\text{K)} / \lambda_0^\circ\text{C} = 0,036 \text{ W/(m}\cdot\text{K)}$
 B-s3, d0
 2 m / neagra

Tevi de cupru		Tevi de oțel			Grosimile de izolare tuburi								
					19 mm			25 mm			32 mm		
ext. Ø (mm)	DN (mm)	Inch	ext. Ø (mm)	DN (mm)	Tip	m / carton	Preț (€/m)	Tip	m / carton	Preț (€/m)	Tip	m / carton	Preț (€/m)
6	4				19 x 06	126	0,95	25 x 06	80	1,98			
10	8	1/8	10,2	6	19 x 10	106	0,96	25 x 10	72	2,00	32 x 10	40	2,70
12	10				19 x 12	100	0,98	25 x 12	60	2,03	32 x 12	36	2,72
14/15	10	1/4	13,5	8	19 x 15	86	1,17	25 x 15	60	2,03	32 x 15	32	2,72
18	15	3/8	17,2	10	19 x 18	78	1,29	25 x 18	50	2,04	32 x 18	32	2,73
20					19 x 20	76	1,33	25 x 20	50	2,09			
22	20	1/2	21,3	15	19 x 22	74	1,34	25 x 22	42	2,09	32 x 22	32	2,87
25			25,0		19 x 25	60	1,56	25 x 25	40	2,43	32 x 25	24	3,25
28	25	3/4	26,9	20	19 x 28	58	1,57	25 x 28	40	2,43	32 x 28	24	3,26
32					19 x 32	54	1,83	25 x 32	32	3,52			
35	32	1	33,7	25	19 x 35	48	1,85	25 x 35	32	2,81	32 x 35	24	3,86
38	32		38,0		19 x 38	44	2,10						
42	40	1 1/4	42,4	32	19 x 42	40	2,11	25 x 42	24	3,46	32 x 42	24	4,74
		1 1/2	48,3	40	19 x 48	30	2,50	25 x 48	24	4,06	32 x 48	18	5,17
54	50		54,0		19 x 54	30	2,58	25 x 54	22	4,60	32 x 54	18	5,98
57	50		57,0		19 x 57	28	2,69				32 x 57	16	6,37
		2	60,3	50	19 x 60	28	2,81	25 x 60	22	5,15	32 x 60	16	6,55
64			63,5		19 x 64	28	3,45	25 x 64	18	5,38	32 x 64	16	6,82
70			70,0		19 x 70	28	3,51	25 x 70	18	5,61	32 x 70	14	7,54
76,1	65	2 1/2	76,1	65	19 x 76	28	3,55	25 x 76	18	6,10	32 x 76	12	7,87
80					19 x 80	26	4,13	25 x 80	14	6,66	32 x 80	12	8,28
88,9	80	3	88,9	80	19 x 89	22	4,16	25 x 89	14	6,91	32 x 89	10	8,58
		3 1/2	101,6		19 x 102	20	6,55				32 x 102	10	10,12
108	100		108,0		19 x 108	20	7,01	25 x 108	10	9,50	32 x 108	8	12,35
114	100	4	114,3	100	19 x 114	18	7,18	25 x 114	10	9,93	32 x 114	8	12,37
			125,0		19 x 125	18	8,69						
133	125		133,0		19 x 133	12	9,03				32 x 133	6	15,37
		5	139,7	125	19 x 140	10	9,57	25 x 140	6	12,12	32 x 140	6	15,79
159	150		160,0		19 x 160	8	10,96				32 x 160	4	20,50
Toleranta la grosime:					± 1,0 mm			± 1,5 mm			± 1,5 mm		
Toleranta la lungime: ± 1,5 %													

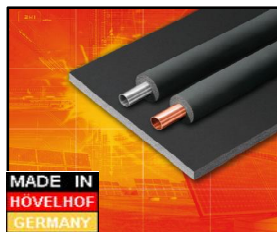
kaiflex[®] DUCT - (ALU)

Plăci roluite - latime: 1,5m



Material: Placi izolante extralate 1,5 m roluite adezivate caserate sau necaserate din cauciuc sintetic cu sistem celular inchis.
 Domeniul temperaturii de utilizare: -40 °C pana +85 °C

Grosime (mm)	m ² /rola	Preț (€/m ²)	
		auto-adeziv	ALU - caserate auto-adeziv
10	30,0	8,59	11,46
12	22,5	10,20	13,18
15	18,0	12,33	15,45
20	15,0	12,95	16,89
Toleranta la grosime: ± 1,0 mm		Toleranta la lungime: ± 1,5 %	



Material: Izolatie din cauciuc sintetic, cu sistem celular compact, fara materiale halogene in componenta, utilizat la izolarea sistemelor solare si a conductelor de inalta temperatura.

Domeniul temperaturii de utilizare: **-50 °C pana +150 °C (+175 °C pentru 1/2 oră)**

Coeficient de permeabilitate la vapori: $\mu \geq 3.000$

Coeficient de conductibilitate termică: $\lambda_0^\circ\text{C} = 0,038 \text{ W}/(\text{m}\cdot\text{K}) / \lambda_{40^\circ\text{C}} = 0,042 \text{ W}/(\text{m}\cdot\text{K})$

Categoria de inflamabilitate: E - DIN EN 13501-1

Lungimea / culoare: 2 m / neagra

Grosimile de izolare tuburi

Tevi de cupru			Tevi de oțel		10 mm			13 mm			19 mm		
ext. Ø (mm)	DN (mm)	Inch	ext. Ø (mm)	DN (mm)	Tip	m / carton	Preț (€/m)	Tip	m / carton	Preț (€/m)	Tip	m / carton	Preț (€/m)
10	8	1/8	10,2	6	10 x 10	220	1,22	13 x 10	152	1,68			
12	10				10 x 12	190	1,30	13 x 12	136	1,79	19 x 12	78	3,15
14/15	10	1/4	13,5	8	10 x 15	172	1,35	13 x 15	120	2,00	19 x 15	72	3,46
18	15	3/8	17,2	10	10 x 18	136	1,46	13 x 18	106	2,17	19 x 18	60	3,61
22	20	1/2	21,3	15	10 x 22	112	1,64	13 x 22	84	2,38	19 x 22	56	4,11
28	25	3/4	26,9	20	10 x 28	84	1,86	13 x 28	72	2,58	19 x 28	40	4,97
35	32	1	33,7	25	10 x 35	60	2,12	13 x 35	50	3,17	19 x 35	36	5,72
42	40	1 1/4	42,4	32	10 x 42	50	2,44	13 x 42	40	3,59	19 x 42	32	6,48
		1 1/2	48,3	40	10 x 48	40	2,86	13 x 48	36	4,28	19 x 48	24	7,94
54	50		54,0		10 x 54	36	3,32	13 x 54	32	5,12	19 x 54	22	8,92
57	50		57,0		10 x 57	32	3,69	13 x 57	24	5,54	19 x 57	18	9,84
		2	60,3	50	10 x 60	32	4,11	13 x 60	24	5,70	19 x 60	18	10,08
76,1	65	2 1/2	76,1	65	10 x 76	20	5,57	13 x 76	18	7,24	19 x 76	16	13,33
88,9	80	3	88,9	80	10 x 89	18	6,68	13 x 89	16	8,58	19 x 89	12	13,85
114	100	4	114,3	100							19 x 114	8	20,50

Tevi de cupru			Tevi de oțel		25 mm			32 mm		
ext. Ø (mm)	DN (mm)	Inch	ext. Ø (mm)	DN (mm)	Tip	m / carton	Preț (€/m)	Tip	m / carton	Preț (€/m)
12	10				25 x 12	78	5,12	32 x 12	32	7,57
14/15	10	1/4	13,5	8	25 x 15	72	5,30	32 x 15	32	8,39
18	15	3/8	17,2	10	25 x 18	60	5,43	32 x 18	24	8,64
22	20	1/2	21,3	15	25 x 22	56	5,87	32 x 22	24	9,37
28	25	3/4	26,9	20	25 x 28	40	7,35	32 x 28	22	10,67
35	32	1	33,7	25	25 x 35	36	7,76	32 x 35	18	12,08
42	40	1 1/4	42,4	32	25 x 42	32	9,36	32 x 42	18	13,19
		1 1/2	48,3	40	25 x 48	24	10,60	32 x 48	14	15,38
54	50		54,0		25 x 54	22	12,16	32 x 54	12	18,25
57	50		57,0		25 x 57	18	13,22	32 x 57	12	18,39
		2	60,3	50	25 x 60	18	13,36	32 x 60	12	18,73
76,1	65	2 1/2	76,1	65	25 x 76	16	16,04	32 x 76	8	22,63
88,9	80	3	88,9	80	25 x 89	12	17,95	32 x 89	8	24,44
114	100	4	114,3	100	25 x 114	8	26,32	32 x 114	6	35,50

kaiflex[®] EPDM

Plăci roluite - latime: 1m



Grosime (mm)	m ² /rola	Preț (€/m ²)
6	30,0	12,79
10	20,0	23,19
13	14,0	28,21
19	10,0	37,63
25	8,0	45,69
32	6,0	54,79

Toleranta conform EN 14304:2009



Material: Izolatie din cauciuc sintetic, cu sistem celular compact, fara materiale halogene in componenta, utilizat la izolarea sistemelor solare si a conductelor de inalta temperatura

Domeniul temperaturii de utilizare: **-50 °C pana +150 °C (+175 °C pentru 1/2 oră)**

Coeficient de permeabilitate la vapori: $\mu \geq 3.000$

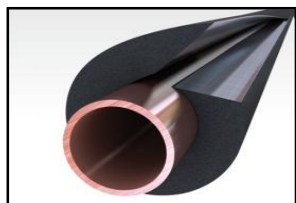
Coeficient de conductibilitate termică: $\lambda_0^{\circ}\text{C} = 0,038 \text{ W}/(\text{m}^*\text{K}) / \lambda_{40}^{\circ}\text{C} = 0,042 \text{ W}/(\text{m}^*\text{K})$

Categoria de inflamabilitate: E - DIN EN 13501-1

Lungimea / culoare: roluite / neagra

Tevi de cupru		Tevi de oțel			Grosimile de izolare tuburi					
ext. Ø (mm)	Inch	Inch	ext. Ø (mm)	DN (mm)	13 mm			19 mm		
					Tip	m / carton	Preț (€/m)	Tip	m / carton	Preț (€/m)
18	3/8	3/8	17,2	10	13 x 18	16	1,79	19 x 18	12	2,98
22	1/2	1/2	21,3	15	13 x 22	15	1,95	19 x 22	10	3,40
28	3/4	3/4	26,9	20	13 x 28	11	2,11	19 x 28	8	4,08
35	1	1	33,7	25	13 x 35	10	2,56	19 x 35	6	4,70

kaiflex[®] ST - SK



Material: **Tuburi izolante din cauciuc sintetic despicate, cu fălci adezivate**

Domeniul temperaturii de utilizare: -50 °C pana +105 °C

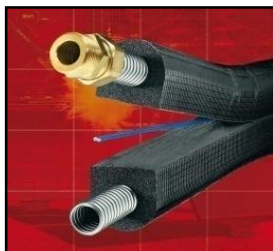
Coeficient de permeabilitate la vapori: $\mu \geq 10.000$

Coeficient de conductibilitate termică: $\lambda_{20}^{\circ}\text{C} = 0,032 \text{ W}/(\text{m}^*\text{K}) / \lambda_0^{\circ}\text{C} = 0,034 \text{ W}/(\text{m}^*\text{K})$

Categoria de inflamabilitate: B-s3, d0

Lungimea: 2 m / neagra

Tevi de cupru		Tevi de oțel			Grosimile de izolare tuburi								
ext. Ø (mm)	DN (mm)	Inch	ext. Ø (mm)	DN (mm)	9 mm			13 mm			19 mm		
					Tip	m / carton	Preț (€/m)	Tip	m / carton	Preț (€/m)	Tip	m / carton	Preț (€/m)
12	10				9 x 12	234	1,15	13 x 12	162	1,41			
14/15	10	1/4	13,5	8	9 x 15	192	1,19	13 x 15	136	1,45	19 x 15	78	2,53
18	15	3/8	17,2	10	9 x 18	166	1,21	13 x 18	118	1,52	19 x 18	72	2,61
22	20	1/2	21,3	15	9 x 22	136	1,34	13 x 22	98	1,74	19 x 22	64	2,81
28	25	3/4	26,9	20	9 x 28	98	1,58	13 x 28	78	2,00	19 x 28	48	3,45
35	32	1	33,7	25	9 x 35	76	1,89	13 x 35	60	2,22	19 x 35	36	3,78
42	40	1 1/4	42,4	32	9 x 42	60	2,09	13 x 42	48	2,48	19 x 42	32	4,96
		1 1/2	48,3	40	9 x 48	50	2,37	13 x 48	40	2,90	19 x 48	24	5,38
54	50		54,0		9 x 54	46	2,61	13 x 54	34	3,36	19 x 54	24	5,69
		2	60,3	50	9 x 60	36	3,05	13 x 60	32	3,73	19 x 60	18	6,23
76,1	65	2 1/2	76,1	65				13 x 76	22	4,83	19 x 76	12	8,84
88,9	80	3	88,9	80				13 x 89	20	6,41	19 x 89	12	9,79



Material:

Domeniul temperaturii de utilizare:

Coeficient de permeabilitate la vapori:

Coeficient de conductibilitate termică:

Categoria de inflamabilitate:

Ţevi de inox:

Izolatie din cauciuc sintetic, cu sistem celular compact,

pentru sisteme de refrigerare, aer conditionat si de incalzire

-50 °C pana +150 °C (+175 °C pentru 1/2 oră)

$\mu \geq 3.000$

$\lambda_0^{\circ C} = 0,038 (W/m^{\circ K}) / \lambda_{40}^{\circ C} = 0,042 (W/m^{\circ K})$

E - DIN EN 13501-1

VA: 1.4404 / AISI 316L

DN tevi (mm)	ext. Ø tevi (mm)	Tip izolatii (mm)	Ø tevi + izolant (mm)	Continut ambalaj			
				10 m	15 m	20 m	25 m
				Pret (€/m)	Pret (€/m)	Pret (€/m)	Pret (€/m)
2 x DN 16	21,4	2 x 14 x 16	100	32,45	31,88	31,31	30,74
2 x DN 20	26,7	2 x 14 x 20	110	38,71	38,15	37,58	37,00
2 x DN 25	31,8	2 x 14 x 25	120	47,82	47,26	46,69	46,12



fiecare tub rulat include 4 seturi de conectori



Unealta - Gulere	
Tip	Pret (€/buc.)
Unealta cu cleme DN 16	139,36
Unealta cu cleme DN 20	139,36
Unealta cu cleme DN 25	139,36



Garnitura	
DN tevi (mm)	Pret (€/buc.)
16	0,85
20	1,03
25	1,37



Inel	
DN tevi (mm)	Pret (€/buc.)
16	0,86
20	1,02
25	1,58



Piulita		
DN tevi (mm)	Filet int. (Inch)	Pret (€/buc.)
16	3/4	1,20
20	1	1,77
25	1 1/4	2,64



Niplu dublu			
DN tevi (mm)	Filet ext. (Inch)	Filet ext. (Inch)	Pret (€/buc.)
16	3/4	3/4	5,68
20	1	1	8,79
25	1 1/4	1 1/4	17,51



Niplu reductie			
DN tevi (mm)	Filet ext. (Inch)	Filet ext. (Inch)	Pret (€/buc.)
16	3/4	1/2	3,06
20	1	3/4	5,97
25	1 1/4	1	10,56



Niplu - tevi cupru			
DN tevi (mm)	Filet ext. (Inch)	tevi cupru (mm)	Pret (€/buc.)
16	3/4	18	2,80
20	1	22	6,27
25	1 1/4	28	11,03



Niplu reductie			
DN tevi (mm)	Filet ext. (Inch)	Filet int. (Inch)	Pret (€/buc.)
16	3/4	1/2	5,00
20	1	3/4	5,43
25	1 1/4	1	7,48



Colier Oval		
Tip	Dimensiune	Pret (€/buc.)
2 x 16	M8 x 80 / S10	3,11
2 x 20	M8 x 80 / S10	3,15
2 x 25	M8 x 80 / S10	3,59



Banda PVC - neagra		
Dimensiune	buc./carton	Pret (€/buc.)
50 mm x 10 m	14	4,84
50 mm x 25 m	14	10,72



Material: Izolant din cauciuc sintetic, caserată cu folie din fibre de sticlă laminată cu folie de aluminiu, asigurând protecție UV și mecanică izolației.

Grosimea folie: 200 μm

Domeniul temperaturii de utilizare: -50 °C până +105 °C

Domeniul temperaturii de utilizare foliei: -30 °C până +80 °C

Coefficient de permeabilitate la vapori: $\mu \geq 10.000$

Coefficient de conductibilitate termică: $\lambda_{20^\circ\text{C}} = 0,032 \text{ W/(m}\cdot\text{K)} / \lambda_0^\circ\text{C} = 0,034 \text{ W/(m}\cdot\text{K)}$

Categoria de inflamabilitate: DIN 4102 - B2

Lungimea: 1 m

Tevi de cupru		Tevi de oțel			Grosimile de izolare tuburi								
					13 mm			19 mm			25 mm		
ext. Ø (mm)	DN (mm)	Inch	ext. Ø (mm)	DN (mm)	Tip	m / carton	Preț (€/m)	Tip	m / carton	Preț (€/m)	Tip	m / carton	Preț (€/m)
14/15	10	1/4	13,5	8	13 x 15	68	10,05	19 x 15	39	12,95			
18	15	3/8	17,2	10	13 x 18	59	10,24	19 x 18	36	13,27	25 x 18	25	15,91
22	20	1/2	21,3	15	13 x 22	49	10,57	19 x 22	32	13,66	25 x 22	21	17,52
25	22		25,0		13 x 25	40	10,95	19 x 25	25	14,24			
28	25	3/4	26,9	20	13 x 28	39	11,40	19 x 28	24	14,75	25 x 28	20	18,62
30	25		30,0		13 x 30	36	11,79	19 x 30	21	15,46			
35	32	1	33,7	25	13 x 35	30	12,24	19 x 35	18	16,17	25 x 35	12	19,78
42	40	1 1/4	42,4	32	13 x 42	24	13,40	19 x 42	16	17,26	25 x 42	11	21,58
			44,5		13 x 45	22	13,79	19 x 45	14	18,10			
		1 1/2	48,3	40	13 x 48	20	14,24	19 x 48	12	18,94	25 x 48	9	23,00
54	50		54,0		13 x 54	17	15,98	19 x 54	12	21,84	25 x 54	8	24,67
					13 x 57	16	16,81	19 x 57	11	22,42			
		2	60,3	50	13 x 60	16	17,72	19 x 60	9	23,06	25 x 60	6	28,15
64			63,5		13 x 64	15	18,36	19 x 64	9	23,96	25 x 64	6	29,63
70			70,0		13 x 70	12	19,58	19 x 70	9	25,06	25 x 70	6	31,05
76,1	65	2 1/2	76,1	65	13 x 76	11	20,29	19 x 76	6	25,83	25 x 76	5	32,02
80					13 x 80	10	21,07	19 x 80	6	27,25			
88,9	80	3	88,9	80	13 x 89	10	21,84	19 x 89	6	28,67	25 x 89	4	35,05
		3 1/2	101,6		13 x 102	8	23,58	19 x 102	6	30,86			
108	100		108,0		13 x 108	8	24,93	19 x 108	5	32,73	25 x 108	3	39,94
114	100	4	114,3	100	13 x 114	8	26,28	19 x 114	5	34,53	25 x 114	3	42,13
			125,0		13 x 125	6	28,86	19 x 125	5	37,82			
133	125		133,0		13 x 133	6	30,73	19 x 133	4	40,26			
		5	139,7	125	13 x 140	6	32,34	19 x 140	3	42,39	25 x 140	2	51,79
159	150		160,0		13 x 160	6	36,91	19 x 160	3	48,44			
Toleranța la grosime:					± 1,5 mm			± 2,5 mm			± 2,5 mm		
Toleranța la lungime: ± 1,5 %													

kaiflex[®] protect ALU-TEC

Plăci roluite - latime: 1m



Grosime (mm)	non-adeziv		auto-adeziv placi: 2m x 1m	
	m ² /rola	Preț (€/m ²)	m ² /box	Preț (€/m ²)
10	20,0	27,88	32,0	33,54
13	14,0	29,79	24,0	35,46
19	10,0	31,83	16,0	37,50
25	8,0	40,21	12,0	45,88
32	6,0	42,46	10,0	48,13
Toleranța conform EN 14304:2005				

Domeniul temperaturii de utilizare: -50 °C până +85 °C

Domeniul temperaturii de utilizare foliei: -30 °C până +80 °C



Banda adezivată Protect Isogenotec	
Dimensiune	Preț (€/buc.)
50 mm x 50 m	27,50
75 mm x 50 m	41,28

Banda Butyl - Alu Gerband 606	
Dimensiune	Preț (€/buc.)
20 mm x 25 m	15,59
50 mm x 10 m	15,61
75 mm x 10 m	23,39
100 mm x 10 m	31,19



Material: Izolant din cauciuc sintetic, caserată cu folie Protect F-Black din fibre de sticlă, asigurand protectie UV si mecanica izolatiei.

Grosimea folie: 200 µm

Domeniul temperaturii de utilizare: -50 °C pana +105 °C

Domeniul temperaturii de utilizare foliei: -30 °C pana +80 °C

Coefficient de permeabilitate la vapori: $\mu \geq 10.000$

Coefficient de conductibilitate termică: $\lambda_{20}^{\circ C} = 0,032 W/(m^{\circ}K) / \lambda_0^{\circ C} = 0,034 W/(m^{\circ}K)$

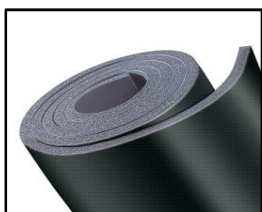
Categoria de inflamabilitate: DIN 4102 - B2

Lungimea: 1 m

					Grosimile de izolare tuburi								
Tevi de cupru		Tevi de oţel			13 mm			19 mm			25 mm		
ext. Ø (mm)	DN (mm)	Inch	ext. Ø (mm)	DN (mm)	Tip	m / carton	Preţ (€/m)	Tip	m / carton	Preţ (€/m)	Tip	m / carton	Preţ (€/m)
14/15	10	1/4	13,5	8	13 x 15	68	9,62	19 x 15	39	12,44			
18	15	3/8	17,2	10	13 x 18	59	9,83	19 x 18	36	12,74	25 x 18	25	15,27
22	20	1/2	21,3	15	13 x 22	49	10,15	19 x 22	32	13,16	25 x 22	21	16,88
25	22		25,0		13 x 25	40	10,57	19 x 25	25	13,66			
28	25	3/4	26,9	20	13 x 28	39	10,94	19 x 28	24	14,18	25 x 28	20	17,88
30	25		30,0		13 x 30	36	11,34	19 x 30	21	14,89			
35	32	1	33,7	25	13 x 35	30	11,76	19 x 35	18	15,56	25 x 35	12	19,03
42	40	1 1/4	42,4	32	13 x 42	24	12,85	19 x 42	16	16,60	25 x 42	11	20,75
			44,5		13 x 45	22	13,28	19 x 45	14	17,46			
		1 1/2	48,3	40	13 x 48	20	13,67	19 x 48	12	18,24	25 x 48	9	22,11
54	50		54,0		13 x 54	17	15,33	19 x 54	12	20,99	25 x 54	8	23,73
					13 x 57	16	16,17	19x 57	11	21,59			
		2	60,3	50	13 x 60	16	17,03	19 x 60	9	22,17	25 x 60	6	27,08
64			63,5		13 x 64	15	17,66	19 x 64	9	23,07	25 x 64	6	28,48
70			70,0		13 x 70	12	18,82	19 x 70	9	24,10	25 x 70	6	29,90
76,1	65	2 1/2	76,1	65	13 x 76	11	19,53	19 x 76	6	24,85	25 x 76	5	30,80
80					13 x 80	10	20,30	19 x 80	6	26,22			
88,9	80	3	88,9	80	13 x 89	10	21,03	19 x 89	6	27,58	25 x 89	4	33,70
		3 1/2	101,6		13 x 102	8	22,68	19 x 102	6	29,70			
108	100		108,0		13 x 108	8	23,97	19 x 108	5	31,44	25 x 108	3	38,40
114	100	4	114,3	100	13 x 114	8	25,32	19 x 114	5	33,18	25 x 114	3	40,53
			125,0		13 x 125	6	27,77	19 x 125	5	36,40			
133	125		133,0		13 x 133	6	29,51	19 x 133	4	38,72			
		5	139,7	125	13 x 140	6	31,06	19 x 140	3	40,72	25 x 140	2	49,80
159	150		160,0		13 x 160	6	35,50	19 x 160	3	46,58			
Toleranta la grosime:					± 1,5 mm			± 2,5 mm			± 2,5 mm		
Toleranta la lungime: ± 1,5 %													

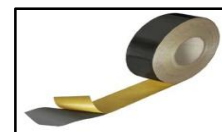
kaiflex[®] protect F-Black

Plăci roluite - latime: 1m



Grosime (mm)	non-adeziv		auto-adeziv placi: 2m x 1m	
	m²/rola	Preţ (€/m²)	m²/box	Preţ (€/m²)
10	20,0	27,33	32,0	33,00
13	14,0	29,21	24,0	34,88
19	10,0	31,21	16,0	36,88
25	8,0	39,42	12,0	45,08
32	6,0	41,63	10,0	47,29

Toleranta conform EN 14304:2005



Banda Butyl - Black Gerband 609

Dimensiune	Preţ (€/buc.)
50 mm x 20 m	46,11
75 mm x 20 m	91,90

Domeniul temperaturii de utilizare: -50 °C pana +85 °C

Domeniul temperaturii de utilizare foliei: -30 °C pana +80 °C

valabila de la 22. februarie 2010

Preturile sunt in Euro la curs BNR din data de facturare si nu includ TVA

Tel.: 0372 171 800
Fax: 0372 171 840



Material: Izolant din cauciuc sintetic, caserată cu folie de aluminiu întărită cu fibre de pînză, pentru asigurarea protecției mecanice și contra razelor UV ale izolantului.

Domeniul temperaturii de utilizare: -50 °C pana +85 °C
 Domeniul temperaturii de utilizare folie: -30 °C pana +80 °C
 Coeficient de permeabilitate la vapori: $\mu \geq 10.000$
 Coeficient de conductibilitate termică: $\lambda_{20}^{\circ}\text{C} = 0,032 \text{ W}/(\text{m}^*\text{K}) / \lambda_0^{\circ}\text{C} = 0,034 \text{ W}/(\text{m}^*\text{K})$
 Categoria de inflamabilitate: DIN 4102 - B2

Plăci roluite - latime: 1m



Grosime (mm)	non-adeziv		auto-adeziv placi: 2m x 1m	
	m ² /rola	Preț (€/m ²)	m ² /box	Preț (€/m ²)
10	20,0	20,92	32,0	26,58
13	14,0	22,38	24,0	28,04
19	10,0	23,88	16,0	29,54
25	8,0	30,17	12,0	35,83
32	6,0	31,88	10,0	37,54

Toleranta conform EN 14304:2005



Banda adezivata ALU-NET	
Dimensiune	Preț(€/buc.)
50 mm x 50 m	5,42
75 mm x 50 m	7,96

kaiflex[®] RT Coliere izolante



Descriere:

Densitatea elementului PIR :
 Domeniul temperaturii de utilizare:
 Coeficient de permeabilitate la vapori:
 Categoria de inflamabilitate:
 Lungimea:

pentru împiedicarea formării condensului sub colierele de fixare a instalațiilor de climatizare și de răcire
 80 kg/m³
 -45 °C pana +105 °C
 $\mu \geq 10.000$
 DIN 4102 - B2
 $\leq \varnothing 114\text{mm} = 50\text{mm}$
 $> \varnothing 114\text{mm} = 100\text{mm}$

Tevi de cupru	Tevi de oțel	13 mm			19 mm			25 mm			32 mm		
ext. Ø (mm)	Inch	Tip	ext. Ø (mm)	Preț (€/buc.)	Tip	ext. Ø (mm)	Preț (€/buc.)	Tip	ext. Ø (mm)	Preț (€/buc.)	Tip	ext. Ø (mm)	Preț (€/buc.)
10	1/8	13 x 10	37	1,99	19 x 10	49	2,36						
		13 x 12	39	2,03	19 x 12	51	2,41						
14/15	1/4	13 x 15	42	2,13	19 x 15	54	2,47						
18	3/8	13 x 18	44	2,21	19 x 18	56	2,55	25 x 18	68	3,01	32 x 18	82	3,28
22	1/2	13 x 22	48	2,32	19 x 22	60	2,63	25 x 22	72	3,29	32 x 22	86	3,57
28	3/4	13 x 28	54	2,68	19 x 28	66	3,05	25 x 28	78	3,79	32 x 28	92	4,06
35	1	13 x 35	61	2,73	19 x 35	73	3,19	25 x 35	85	4,26	32 x 35	99	4,64
42	1 1/4	13 x 42	68	2,78	19 x 42	80	3,25	25 x 42	92	4,43	32 x 42	106	4,89
	1 1/2	13 x 48	74	3,17	19 x 48	86	3,69	25 x 48	98	4,72	32 x 48	112	5,30
54		13 x 54	80	3,26	19 x 54	92	3,88	25 x 54	104	4,95	32 x 54	118	5,55
	2	13 x 60	86	3,42	19 x 60	98	4,13	25 x 60	110	6,10	32 x 60	124	6,85
60		13 x 64	92	4,40	19 x 64	104	5,16	25 x 64	116	6,10	32 x 64	130	6,85
70		13 x 70	98	4,43	19 x 70	110	5,28	25 x 70	122	6,25	32 x 70	136	7,03
76,1	2 1/2	13 x 76	104	4,60	19 x 76	116	6,05	25 x 76	129	7,16	32 x 76	142	8,06
88,9	3	13 x 89	117	5,33	19 x 89	129	6,55	25 x 89	142	8,51	32 x 89	155	9,55
	3 1/2	13 x 102	130	5,45	19 x 102	142	7,03	25 x 102	154	9,29	32 x 102	168	10,48
108		13 x 108	136	5,45	19 x 108	148	7,20	25 x 108	161	9,29	32 x 108	174	10,48
114	4	13 x 114	144	6,35	19 x 114	156	6,96	25 x 114	167	10,82	32 x 114	182	12,44
133		13 x 133	163	7,36	19 x 133	175	9,58	25 x 133	186	12,93	32 x 133	201	15,05
	5	13 x 140	170	7,36	19 x 140	182	9,26	25 x 140	193	12,93	32 x 140	208	15,05
159		13 x 160	190	7,94	19 x 160	202	10,09	25 x 160	213	14,10	32 x 160	227	16,42
		13 x 219	247	11,63	19 x 219	259	15,20	25 x 219	272	24,06	32 x 219	284	30,10
		13 x 273	301	14,13	19 x 273	313	18,06	25 x 273	326	28,62	32 x 273	339	35,82

Toleranta la Ø ext.: + 1,0 mm / Toleranta la grosime de izolare: ± 1,5 mm



kaiflex® - Bandă adezivată			
Tip	Dimensiune	buc. / carton	Preț (€/buc.)
Cauciuc banda	15m x 50mm x 3mm	12	7,69
kaiflex® ST	15m x 50mm x 3mm	12	10,61
kaiflex® ST	15m x 100mm x 3mm	6	21,60
kaiflex® EPDM	15m x 50mm x 3mm	12	15,84



kaiflex® - Adeziv special		
Tip	buc./carton	Preț (€/cutie)
0,26 l - cu pensula	24	7,02
0,54 l (450 gr.)	20	8,54
0,79 l (660 gr.)	20	11,66
2,60 l (2.200 gr.)	6	33,49



kaiflex® - Adeziv EPDM		
Tip	buc./carton	Preț (€/cutie)
0,25 l - cu pensula	24	12,85
0,75 l (660 gr)	20	22,87



kaiflex® - Diluant		
Tip	buc. / carton	Preț (€/cutie)
1 litru	12	9,83



kaiflex® - Vopsea special		
Tip	buc. / carton	Preț (€/cutie)
0,75 litru - alb sau gri	12	19,97



Dozator pentru adeziv	
Tip	Preț (€/buc.)
Dozator 0,25 l - cu pensula 17mm	35,73
Dozator 0,25 l - cu pensula 17mm - gat lung	39,30
Pensulă de rezervă 11 mm	12,02
Pensulă de rezervă 17 mm	12,02



Cutite	
Tip	Preț (€/buc.)
Cuțit de despicare kaiflex®	29,94
Lame de rezervă - 5 buc.	9,83
Cuțit cu lame profil V	33,66
Lame de rezervă profil V - 5 buc.	8,20
Kaiflex Cutit - 100 mm lama	9,85
Kaiflex Cutit - 130 mm lama	11,09



Banda adezivata poliester suflata cu aluminiu		
Dimensiune	buc./carton	Preț (€/buc.)
50 mm x 100 m	54	3,65
75 mm x 100 m	36	5,18
100 mm x 100 m	27	7,10



Banda adezivata ALU		
Dimensiune	buc./carton	Preț (€/buc.)
50 mm x 50 m	24	3,78
75 mm x 50 m	16	5,66
100 mm x 50 m	12	7,56
50 mm x 100 m	24	7,56
75 mm x 100 m	16	11,32
100 mm x 100 m	12	15,12



Banda adezivata ALU-NET ranforsata cu fibra de sticla		
Dimensiune	buc./carton	Preț (€/buc.)
50 mm x 50 m	24	5,42
75 mm x 50 m	16	7,96



Material:

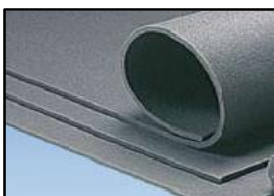
Domeniul temperaturii de utilizare:
 Densitatea:
 Coeficient de conductibilitate termică:
 Categoria de inflamabilitate:
 Lungimea / culoare:

Izolatie extrudat din spumă PE,
 pentru izolarea instalatiilor sanitare.
 pana +105 °C
 ~35 kg/m³
 $\lambda_{40^\circ\text{C}} = 0,040 \text{ W}/(\text{m}\cdot\text{K})$
 DIN 4102 - B1
 2 m / gri

Tevi ext. Ø		Grosimile de izolare túburi														
		5 mm			9 mm			13 mm			20 mm			25 mm		
mm	Inch	Tip	m / carton	Preț (€/m)	Tip	m / carton	Preț (€/m)	Tip	m / carton	Preț (€/m)	Tip	m / carton	Preț (€/m)	Tip	m / carton	Preț (€/m)
12					9 x 12	320	0,26	13 x 12	240	0,39						
15	1/4	5 x 15	480	0,16	9 x 15	300	0,27	13 x 15	220	0,41	20 x 15	114	0,79	27 x 15	80	1,41
18	3/8	5 x 18	420	0,18	9 x 18	260	0,29	13 x 18	200	0,44	20 x 18	110	0,83	26 x 18	80	1,51
22	1/2	5 x 22	360	0,21	9 x 22	220	0,32	13 x 22	160	0,49	20 x 22	100	0,96	26 x 22	70	1,62
28	3/4	5 x 28	250	0,25	9 x 28	170	0,38	13 x 28	130	0,57	20 x 28	90	1,10	25 x 28	64	1,88
35	1	5 x 35	182	0,37	9 x 35	140	0,48	13 x 35	110	0,75	20 x 35	70	1,28	25 x 35	54	2,06
42	1 1/4				9 x 42	100	0,57	13 x 42	90	0,91	20 x 42	60	1,44	25 x 42	50	2,44
48	1 1/2				9 x 48	86	0,68	13 x 48	80	1,00	20 x 48	50	2,05	25 x 48	46	3,03
54					9 x 54	70	0,84	13 x 54	68	1,12	20 x 54	42	2,15			
60	2				9 x 60	64	0,94	13 x 60	60	1,20	20 x 60	34	2,28			
76	2 1/2				9 x 76	40	1,37	13 x 76	40	1,61	20 x 76	26	2,75			
89	3				9 x 89	34	1,59	13 x 89	34	1,97	20 x 89	22	4,21			
108					9 x 108	24	2,07	13 x 108	24	2,69	20 x 108	16	5,57			
114	4				9 x 114	24	2,42	13 x 114	24	2,78	20 x 114	16	5,65			
Toleranta la gros.:		± 1,0 mm			± 1,5 mm			± 2,0 mm			± 2,5 mm			± 2,5 mm		
Toleranta la lungime:		± 1,5 %														

kaiflex® PE

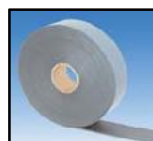
Plăci roluite - latime: 1,5m



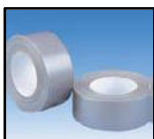
Grosime (mm)	m²/rola	Preț (€/m²)	
		non-adeziv	auto-adeziv
3	75,0	1,32	2,78
5	75,0	2,20	3,67
6	75,0	2,63	4,10
8	75,0	3,49	4,96
10	60,0	4,37	5,84
12	45,0	5,25	6,73
15	45,0	6,59	8,06
20	30,0	8,73	10,20



Clipsuri de montaj		
Pungi	pungi/box	Preț (€/pungi)
100 buc.	25	3,15



kaiflex® - PE Banda adezivata		
Dimensiune	buc./carton	Preț (€/buc.)
10m x 50mm x 3mm	10	10,40



Banda adeziva cu fibra de panza - gri		
Dimensiune	buc./carton	Preț (€/buc.)
38 mm x 50 m	20	8,90
50 mm x 50 m	18	11,53



Material: Izolatie extrudat din spumă PE, cu folie protectoare pentru izolarea instalatiilor sanitare.

Domeniul temperaturii de utilizare: pana +105 °C

Densitatea: ~35 kg/m³

Coeficient de conductibilitate termică: λ₄₀°C = 0,040 W/(m*K)

Categoria de inflamabilitate: DIN 4102 - B1

Lungimea / culoare: 2 m / rosu

Grosimile de izolare tuburi														
Țevi ext. Ø		9 mm			13 mm			20 mm			25 - 27 mm			
mm	Inch	Tip	m / carton	Pret (€/m)	Tip	m / carton	Pret (€/m)	Tip	m / carton	Pret (€/m)	Tip	m / carton	Pret (€/m)	
12		9 x 12	320	1,33	13 x 12	240	1,77							
15	1/4	9 x 15	300	1,40	13 x 15	220	2,07				27 x 15	80	3,97	
18	3/8	9 x 18	260	1,48	13 x 18	200	2,15				26 x 18	80	4,05	
22	1/2	9 x 22	220	1,55	13 x 22	160	2,30				26 x 22	70	4,34	
28	3/4	9 x 28	170	1,85	13 x 28	130	2,52	20 x 28	90	4,00	25 x 28	64	5,13	
35	1	9 x 35	140	2,07	13 x 35	110	3,11	20 x 35	70	4,40	25 x 35	48	5,75	
42	1 1/4	9 x 42	100	2,52	13 x 42	90	3,63	20 x 42	60	5,62	25 x 42	46	6,97	
Toleranta la gros.:			± 1,5 mm			± 2,0 mm			± 2,5 mm			± 2,5 mm		
Toleranta la lungime:			± 1,5 %											

PE-RO alu



adezivata longitudinal

Material: Izolatie extrudat din spumă PE, caserată cu folie din fibre de sticlă laminata cu folie de aluminiu.

Domeniul temperaturii de utilizare: pana +95 °C

Densitatea: ~35 kg/m³

Coeficient de conductibilitate termică: λ₄₀°C = 0,039 W/(m*K)

Categoria de inflamabilitate: E - EN 13501-1

Lungimea: 2 m

Grosimile de izolare tuburi													
Țevi ext. Ø		9 mm				13 mm				20 mm			
mm	Inch	Tip	m / carton	Pret (€/m)		Tip	m / carton	Pret (€/m)		Tip	m / carton	Pret (€/m)	
				inchis	adezivata			inchis	adezivata			inchis	adezivata
15	1/4	9 x 15	400	1,68	2,51	13 x 15	270	2,45	3,26	20 x 15	150	3,57	4,39
18	3/8	9 x 18	300	1,79	2,59	13 x 18	220	2,54	3,38	20 x 18	130	3,91	4,74
22	1/2	9 x 22	270	1,89	2,70	13 x 22	182	2,73	3,55	20 x 22	110	4,19	5,01
28	3/4	9 x 28	196	2,23	3,06	13 x 28	156	3,08	3,89	20 x 28	100	4,79	5,61
35	1	9 x 35	160	2,50	3,32	13 x 35	130	3,76	4,97	20 x 35	80	5,33	6,13
42	1 1/4	9 x 42	110	3,09	3,87	13 x 42	100	4,37	5,19	20 x 42	64	6,77	7,60
48	1 1/2	9 x 48	100	3,65	4,46	13 x 48	84	5,15	5,97	20 x 48	56	7,32	
60	2	9 x 60	70	5,20	6,02	13 x 60	60	7,06	7,87				

Material: Izolatie extrudat din spumă PE, cu folie protectoare pentru izolarea instalatiilor sanitare.
 Domeniul temperaturii de utilizare: pana +90 °C
 Densitatea: ~35 kg/m³
 Categoria de inflamabilitate: DIN 4102 - B2
 Lungimea / culoare: in role de 10 m / rosu

kaiflex® PE - DWS

tub protector din spumă PE, pentru izolarea instalațiilor de apă rece și caldă conduse în pereti



4 mm

Tip	m / carton	Preț (€/m)
4 x 15	600	0,25
4 x 18	600	0,28
4 x 22	600	0,31
4 x 28	500	0,34
4 x 35	400	0,37
4 x 42	400	0,43

kaiflex® PE - AB

tub protector din spumă PE, pentru izolarea a tuburilor PVC și instalațiilor aerotehnice



5 mm

Tip	m / carton	Preț (€/m)
5 x DN 50	180	0,51
5 x DN 70	130	0,69
5 x DN 100	100	0,76
5 x DN 125	80	0,88
5 x DN 150	80	1,25

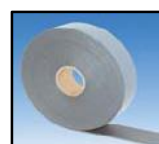
9 mm

Tip	m / carton	Preț (€/m)
9 x DN 50	50	2,10
9 x DN 70	50	3,06
9 x DN 100	50	4,18
9 x DN 125	40	4,55

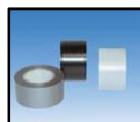
kaiflex® Accesorii - PE

kaiflex® - Bandă adezivată

Tip	Dimensiune	cutii/carton	Preț (€/buc.)
kaiflex® PE gri	10m x 50mm x 3mm	10	10,40
kaiflex® PE -DWS/AB rosu	10m x 50mm x 3mm	10	11,51



Banda adeziva PVC gri sau rosu



Dimensiune	buc./carton	Preț (€/buc.)
30 mm x 10 m	22	3,24
30 mm x 25 m	22	6,51
50 mm x 10 m	14	4,84
50 mm x 25 m	14	10,72



Banda adeziva cu fibra de panza - gri

Dimensiune	buc./carton	Preț (€/buc.)
38 mm x 50 m	20	8,90
50 mm x 50 m	18	11,53

Clipsuri de montaj kaiflex® PE



Dimensiune	pungi/box	Preț €/punga
100 buc.	25	3,15



kaiflex® - Adeziv special

Tip	buc./carton	Preț (€/buc.)
0,26 l - cu pensula	25	7,02
0,54 l (450 gr.)	20	8,54
0,79 l (660 gr.)	20	11,66
2,60 l (2.200 gr.)	6	33,49

kaiflex[®] PUR - PVC



Material:

Domeniul temperaturii de utilizare:

Densitatea:

Coefficient de conductibilitate termică:

Categoria de inflamabilitate:

Lungimea:

Cochilii din poliuretan protejate cu folie PVC, cu bandă de închidere adezivată, ptr. izolarea instalatiilor de apă caldă menajeră și de încălzire.

pana +110 °C

PUR-035-PVC ~25 kg/m³

PUR-040-PVC ~12-16 kg/m³

PUR-035-PVC $\lambda_{40^\circ\text{C}} = 0,035 \text{ W}/(\text{m}^*\text{K})$

PUR-040-PVC $\lambda_{40^\circ\text{C}} = 0,040 \text{ W}/(\text{m}^*\text{K})$

DIN 4102 - B2

1 m

Țevi de cupru		Țevi de oțel			PUR - 035 - PVC			PUR - 040 - PVC		
ext. Ø mm	DN mm	Inch	ext. Ø mm	DN mm	Tip	m / carton	Preț (€/m)	Tip	m / carton	Preț (€/m)
14/15	10	1/4	13,5	8	20 x 15	70	3,42	20 x 15	70	2,54
18	15	3/8	17,2	10	20 x 18	70	3,60	20 x 18	70	2,61
22	20	1/2	21,3	15	20 x 22	60	3,97	20 x 22	60	2,68
28	25	3/4	26,9	20	20 x 28	48	4,19	20 x 28	48	2,79
35	32	1	33,7	25	30 x 35	24	11,92	20 x 35	40	2,95
42	40	1 1/4	42,4	32	30 x 42	20	15,02	25 x 42	24	4,20
		1 1/2	48,3	40	40 x 48	12	17,75	25 x 48	20	4,68
		2	60,3	50	50 x 60	8	22,02	30 x 60	15	5,50
76,1	65	2 1/2	76,1	65				30 x 76	12	8,53
76,1	65	2 1/2	76,1	65				40 x 76	9	10,90
88,9	80	3	88,9	80				30 x 89	9	11,65
88,9	80	3	88,9	80				40 x 89	6	13,47

kaiflex[®] PUR - ALU



Material:

Domeniul temperaturii de utilizare:

Densitatea:

Coefficient de conductibilitate termică:

Categoria de inflamabilitate:

Lungimea:

Cochilii din poliuretan protejate cu folie ALU, cu bandă de închidere adezivată, ptr. izolarea instalatiilor de apă caldă menajeră și de încălzire

pana +110 °C

PUR-035-ALU ~25 kg/m³

PUR-040-ALU ~12-16 kg/m³

PUR-035-ALU $\lambda_{40^\circ\text{C}} = 0,035 \text{ W}/(\text{m}^*\text{K})$

PUR-040-ALU $\lambda_{40^\circ\text{C}} = 0,040 \text{ W}/(\text{m}^*\text{K})$

DIN 4102 - B2

1 m

Țevi de cupru		Țevi de oțel			PUR - 035 - ALU			PUR - 040 - ALU		
ext. Ø mm	DN mm	Inch	ext. Ø mm	DN mm	Tip	m / carton	Preț (€/m)	Tip	m / carton	Preț (€/m)
14/15	10	1/4	13,5	8	20 x 15	70	3,12	20 x 15	70	2,33
18	15	3/8	17,2	10	20 x 18	70	3,24	20 x 18	70	2,42
22	20	1/2	21,3	15	20 x 22	60	3,30	20 x 22	60	2,55
28	25	3/4	26,9	20	20 x 28	48	3,40	20 x 28	48	2,65
35	32	1	33,7	25	30 x 35	24	10,53	20 x 35	24	2,87
42	40	1 1/4	42,4	32	30 x 42	20	13,45	25 x 42	20	4,00
		1 1/2	48,3	40	40 x 48	12	14,38	25 x 48	18	4,47
		2	60,3	50	50 x 60	8	19,65	30 x 60	15	5,30
76,1	65	2 1/2	76,1	65				30 x 76	12	7,33
76,1	65	2 1/2	76,1	65				40 x 76	9	9,50
88,9	80	3	88,9	80				30 x 89	9	10,81
88,9	80	3	88,9	80				40 x 89	6	11,73

Cochilii din poliuretan



Domeniul temperaturii de utilizare PUR:
 Domeniul temperaturii de utilizare CR. PUR:
 Coeficient de conductibilitate termică:
 Categoria de inflamabilitate:
 Lungimea:

-40 °C pana +120 °C
 -196 °C pana +120 °C
 $\lambda_{40} = 0,0289 \text{ W/(m}^* \text{K)}$
 B2 - DIN 4102
 1 m

Tevi ext. Ø (mm)	Grosimile de izolare (mm)											
	20			30			40			50		
	m/cutie	Pret (€/m)		m/cutie	Pret (€/m)		m/cutie	Pret (€/m)		m/cutie	Pret (€/m)	
PUR		CR. PUR	PUR		CR. PUR	PUR		CR. PUR	PUR		CR. PUR	
21	85	2,71	2,77	49	4,78	4,87	30	7,44	7,58	20	10,66	10,86
27	65	3,27	3,33	36	5,51	5,62	25	8,34	8,49	19	11,74	11,96
33	56	3,89	3,97	36	6,30	6,42	24	9,29	9,47	16	12,86	13,13
38	52	4,42	4,51	33	6,98	7,12	22	10,13	10,34	15	13,86	14,12
42	49	4,90	4,99	30	7,58	7,72	20	10,83	11,04	14	14,68	14,95
48	36	5,65	5,74	25	8,49	8,65	18	11,93	12,15	12	15,94	16,26
60	30	7,28	7,42	20	10,48	10,69	15	14,26	14,54	11	18,62	18,99
70	25	8,82	8,98	16	12,29	12,54	12	16,38	16,69	10	21,03	21,44
76	20	9,78	9,99	16	13,46	13,72	12	17,72	18,06	9	22,54	22,99
89	16	12,12	12,35	12	16,16	16,46	10	20,80	21,19	8	26,01	26,51
108	12	15,94	16,26	10	20,55	20,94	8	25,73	26,21	6	31,50	32,11
114	14	17,27	17,59	9	22,03	22,46	8	27,39	27,92	6	33,34	33,97
127	8	20,30	20,69	8	25,45	25,95	7	31,19	31,78	6	37,50	38,22
133	7	21,79	22,21	8	27,13	27,63	6	33,02	33,66	5	39,53	40,27
140	6	23,58	24,03	6	29,10	29,68	5	35,23	35,90	4	41,94	42,73
159	4	28,82	29,38	5	34,92	35,59	4	41,58	42,37	4	48,83	49,78
168	4	31,50	32,11	5	37,85	38,56	4	44,78	45,62	3	52,28	53,29
191	4	38,84	39,59	4	45,86	46,73	3	53,46	54,48	3	61,65	62,83
200	4	41,92	42,70	4	49,20	50,10	3	57,06	58,12	3	65,49	66,72
219	4	48,81	49,73	4	56,65	57,70	3	65,05	66,27	3	74,06	75,43
273		71,29	72,61	4	80,70	82,20	3	90,69	92,37	3	101,25	103,13

Accesorii - PUR



Adeziv PUR / CR. PUR		
Tip	kg/galeata	Pret (€/kg)
Kestopur PL 2400	13,2	11,92



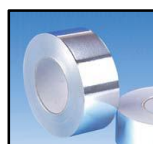
Banda adeziva PVC - gri		
Dimensiune	buc./carton	Pret (€/buc.)
30 mm x 10 m	22	3,24
30 mm x 25 m	22	6,51
50 mm x 10 m	14	4,84
50 mm x 25 m	14	10,72



Cutite	
Tip	Pret (€/buc.)
Cuțit de despicare - 320 mm lama	19,80



Banda adezivata poliester suflata cu aluminiu		
Dimensiune	buc./carton	Pret (€/buc.)
50 mm x 100 m	54	3,65
75 mm x 100 m	36	5,18
100 mm x 100 m	27	7,10



Banda adezivata ALU		
Dimensiune	buc./carton	Pret (€/buc.)
50 mm x 50 m	24	3,78
75 mm x 50 m	16	5,66
100 mm x 50 m	12	7,56
50 mm x 100 m	24	7,56
75 mm x 100 m	16	11,32
100 mm x 100 m	12	15,12

valabila de la 22. februarie 2010

Preturile sunt in Euro la curs BNR din data de facturare si nu includ TVA

Tel.: 0372 171 800
Fax: 0372 171 840

14



ISOVER - LAM/ANB

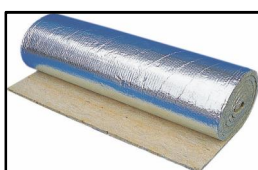


Material: Rulou din lamele de vata minerala de sticla caserate cu folie de Aluminiu armata cu fibra de sticla.

Domeniul temperaturii de utilizare vata de sticla: max. 200 °C
 Domeniul temperaturii de utilizare folie: max. 100 °C
 Densitate: ~ 27 kg/m³
 Coeficient de conductibilitate termică: $\lambda_D = 0,037 \text{ W/(m}^*\text{K)}$
 Categoria de inflamabilitate: Euroclasa A1

Grosime (mm)	Tip	Latime (mm)	Lungime (mm)	m ² / ambalaj	Pret (€/m ²)
20	LAM / ANB 20	500 / 1.000	12.000	12,0	3,72
30	LAM / ANB 30	500 / 1.000	8.000	8,0	4,64
40	LAM / ANB 40	500 / 1.000	6.000	6,0	6,03
50	LAM / ANB 50	500 / 1.000	5.000	5,0	6,95
60	LAM / ANB 60	500 / 1.000	4.000	4,0	8,04
80	LAM / ANB 80	500 / 1.000	3.000	3,0	9,74
100	LAM / ANB 100	500 / 1.000	3.000	3,0	11,51

KNAUF - Nobasil LSP



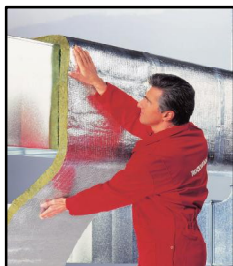
Material: Rulou din lamele de vata bazaltica caserate cu folie Aluminiu armata cu fibra de sticla.

Densitate: ~ 35 / 50 / 65 / 90 kg/m³
 Domeniul temperaturii de utilizare vata bazaltica: max. 600 °C
 Coeficient de conductibilitate termică: $\lambda_D = 0,040 \text{ W/(m}^*\text{K)}$
 Categoria de inflamabilitate: A2 - EN13501/1

Grosime (mm)	Latime (mm)	Lungime (mm)	m ² / ambalaj	Pret (€/m ²)			
				LSP 35	LSP 50	LSP 65	LSP 90
20	2 x 500	8.000	8,0	3,36	4,58	4,88	7,14
30	2 x 500	8.000	8,0	3,87	5,43	5,90	8,60
40	2 x 500	5.000	5,0	4,65	6,37	7,02	10,02
50	2 x 500	5.000	5,0	5,23	7,34	8,12	11,52
60	2 x 500	4.000	4,0	5,74	8,68	9,21	13,00
80	2 x 500	3.000	3,0	6,87	9,80	12,48	15,83
100	2 x 500	2.500	2,5	8,30	12,50	15,02	-



ROCKWOOL - Larock ALS



Material: Rulou din lamele de vata bazaltica caserate cu folie Aluminiu armata cu fibra de sticla.

Domeniul temperaturii de utilizare vata bazaltica: max. 250 °C
 Domeniul temperaturii de utilizare folie: max. 100 °C
 Densitate - Larock 32 ALS: ~ 32 kg/m³
 Densitate - Larock 40 ALS: ~ 40 kg/m³
 Densitate - Larock 65 ALS: ~ 60 kg/m³
 Coeficient de conductibilitate termică: $\lambda_{40} = 0,040 \text{ W}/(\text{m}^*\text{K})$
 Categoria de inflamabilitate: A2-s1,d0

Grosime (mm)	Latime (mm)	Lungime (mm)	m ² / ambalaj	Pret (€/m ²)		
				Larock 32 ALS	Larock 40 ALS	Larock 65 ALS
20	1.000	12.000	12,0	3,67	5,43	-
25	1.000	5.000	5,0	-	5,70	-
30	1.000	8.000	8,0	4,22	5,98	6,84
40	1.000	6.000	6,0	4,86	6,55	7,98
50	1.000	5.000	5,0	5,50	7,10	9,12
60	1.000	4.000	4,0	6,03	7,66	10,26
80	1.000	3.000	3,0	7,55	8,76	12,54
100	1.000	2.500	2,5	9,14	9,88	14,82

ISOVER - RIO ALU



Material: Saltele rulate si comprimate caserate cu folie de aluminiu pentru toate tipurile de izolatii termice si fonice.

Coeficient de conductibilitate termică: $\lambda_D = 0,042 \text{ W}/(\text{m}^*\text{K})$
 Categoria de inflamabilitate: Euroclasa: A2 - s1,d0

Grosime (mm)	Tip	Lungime x Latime (mm x mm)	m ² / ambalaj	Pret (RON / m ²)
50	RIO 5 ALU	12.000 x 1.200	14,40	10,04
100	RIO 10 ALU	7.500 x 1.200	9,00	14,27

KNAUF - Heralan LS



Material: Vata bazaltica maruntita pentru izolatii coturi si valve
 Domeniul temperaturii de utilizare: max. 750 °C
 Categoria de inflamabilitate: A

Vata - maruntita	
kg / sac	Pret (€/kg)
10	5,23



Cochilii necaserate



Domeniul temperaturii de utilizare vata bazaltica:

Densitate:

Coeficient de conductibilitate termică:

Categoria de inflamabilitate:

Lungimea:

max. 250 °C

~ 80 kg/m³

$\lambda_R = 0,035 \text{ W}/(\text{m}^*\text{K})$

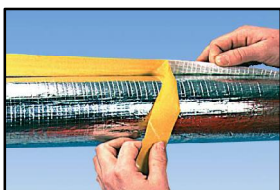
A1-s1,d0 - EN13501/1

1 m

Grosimile de izolare (mm)

Tevi ext. Ø (mm)	20		30		40		50		60		80		100	
	m/cutie	Pret (€/m)	m/cutie	Pret (€/m)	m/cutie	Pret (€/m)	m/cutie	Pret (€/m)	m/cutie	Pret (€/m)	m/cutie	Pret (€/m)	m/cutie	Pret (€/m)
15	110	1,19	56	1,63	32	2,20	24	3,19	16	3,66	10	5,95	8	8,95
18	100	1,21	52	1,66	31	2,24	22	3,25	16	3,74	9	6,07	7	9,12
22	85	1,37	49	1,71	30	2,33	20	3,36	15	3,96	9	6,37	6	9,58
27	65	1,67	36	1,79	25	2,37	19	3,62	14	4,13	8	6,61	5	10,33
34	56	1,86	36	1,94	24	2,48	16	3,71	12	4,33	8	6,99	5	10,77
42	49	2,00	30	2,32	20	2,69	14	3,95	10	4,59	6	7,47	5	11,43
48	36	2,09	25	2,57	18	2,96	12	4,23	10	4,84	6	7,94	5	11,87
60	30	2,36	20	2,75	15	3,66	11	4,55	9	5,76	5	8,77	4	12,84
76	20	2,60	16	3,20	12	4,17	9	5,10	8	6,60	5	10,13	4	14,01
89	16	2,79	12	3,55	10	4,56	8	5,28	6	7,22	4	11,04	3	14,95
108	12	3,59	10	4,21	8	5,02	6	6,54	5	8,49	4	12,14	3	16,34
114	14	3,70	9	4,36	8	5,18	6	6,71	5	8,79	4	12,74	3	17,05
133	7	4,24	8	4,99	6	5,98	5	7,28	4	9,94	3	13,92	3	18,47
140	6	4,37	6	5,14	5	6,03	4	8,06	3	10,25	3	14,33	3	18,98
159	4	5,02	5	5,92	4	7,30	4	9,22	3	11,13	2	15,71	3	20,64
168	4	5,06	5	6,12	4	7,85	3	9,73	3	11,75	2	16,23	2	21,30
189	4	6,02	4	7,04	3	8,92	3	10,96	3	13,13	2	17,92	2	23,29
219	4	6,76	4	7,69	3	9,80	3	12,05	3	14,44	2	19,67	2	25,47
250			4	8,37	3	10,70	3	13,17	2	15,79	2	21,47	2	27,73
273			4	8,87	3	11,37	3	14,01	2	16,80	2	22,81	2	29,40
324			3	9,55	3	12,41	2	15,43	2	18,58	2	25,34	1	32,67
350			3	10,11	3	13,17	2	16,37	2	19,72	2	26,85	1	34,56

Cochilii caserate cu folie ALU



Domeniul temperaturii de utilizare vata bazaltica:

Domeniul temperaturii de utilizare folie:

Densitate:

Coeficient de conductibilitate termică:

Categoria de inflamabilitate:

Lungimea:

max. 250 °C

max. 80 °C

~ 80 kg/m³

$\lambda_R = 0,035 \text{ W}/(\text{m}^*\text{K})$

A1 - EN13501/1

1 m

Grosimile de izolare (mm)

Tevi ext. Ø (mm)	20		30		40		50		60		80		100	
	m/cutie	Pret (€/m)	m/cutie	Pret (€/m)	m/cutie	Pret (€/m)	m/cutie	Pret (€/m)	m/cutie	Pret (€/m)	m/cutie	Pret (€/m)	m/cutie	Pret (€/m)
15	110	1,75	56	2,33	32	3,03	24	4,07	16	4,88	10	7,43	8	10,07
18	100	1,79	52	2,37	31	3,09	22	4,16	16	4,98	9	7,58	7	10,27
22	85	1,97	49	2,62	30	3,42	20	4,36	15	5,23	9	7,97	6	10,78
27	65	2,10	36	2,94	25	3,95	19	4,94	14	5,28	8	8,35	5	11,35
34	56	2,53	36	3,28	24	4,15	16	5,20	12	5,51	8	8,83	5	12,08
42	49	2,74	30	3,47	20	4,42	14	5,60	10	5,84	6	9,42	5	13,01
48	36	2,87	25	3,72	18	4,67	12	5,86	10	6,16	6	10,02	5	13,45
60	30	3,23	20	4,07	15	5,25	11	6,47	9	7,35	5	11,03	4	14,48
76	20	3,57	16	4,51	12	5,82	9	7,16	8	8,42	5	12,07	4	16,07
89	16	3,85	12	4,89	10	6,29	8	7,73	6	9,20	4	12,91	3	17,10
108	12	4,25	10	5,54	8	6,97	6	8,55	5	10,27	4	14,15	3	18,61
114	14	4,55	9	5,90	8	7,39	6	9,02	5	10,80	4	14,80	3	19,38
133	7	5,95	8	6,57	6	8,18	5	9,94	4	11,85	3	16,09	3	20,92
140	6	6,13	6	6,77	5	8,44	4	10,25	3	12,20	3	16,55	3	21,47
159	4	7,03	5	7,59	4	9,40	4	11,34	3	13,43	2	18,06	3	23,26
168	4	7,09	5	7,85	4	9,72	3	11,73	3	13,88	2	18,65	2	23,98
189	4	8,43	4	8,92	3	10,94	3	13,10	3	15,41	2	20,47	2	26,11
219	4	9,47	4	9,77	3	12,01	3	14,40	3	16,93	2	22,42	2	28,50
250			4	10,66	3	13,13	3	15,74	2	18,49	2	24,44	2	30,97
273			4	11,32	3	13,95	3	16,73	2	19,65	2	25,93	2	32,80
324			3	12,34	3	15,34	2	18,49	2	21,78	2	28,81	1	36,41
350			3	13,08	3	16,27	2	19,61	2	23,10	2	30,50	1	38,48

KNAUF - Nobasil R-PPD 80 / R-PPD 100



Material: Saltele din vata bazaltica cusute pe suport din plasa metalica rabbit
 Densitate - Nobasil R-PPD 80 ~ 80 kg/m³
 Densitate - Nobasil R-PPD 100 ~ 100 kg/m³
 Domeniul temperaturii de utilizare vata bazaltica: max. 640 °C
 Coeficient de conductibilitate termică: $\lambda_D = 0,035 \text{ W}/(\text{m}^*\text{K})$
 Categoria de inflamabilitate: A1 - EN13501/1

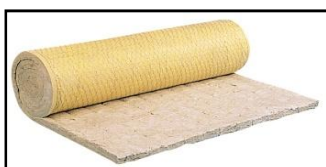
Grosime (mm)	Latime (mm)	Lungime (mm)	m ² / ambalaj	Pret (€/m ²)	
				R-PPD 80	R-PPD 100
40	1.000	5.000	5,0	5,93	7,41
50	1.000	5.000	5,0	6,89	8,48
60	1.000	3.000	3,0	8,05	10,18
70	1.000	3.000	3,0	9,11	11,41
80	1.000	3.000	3,0	9,95	12,52
90	1.000	3.000	3,0	11,04	14,00
100	1.000	2.500	2,5	11,89	15,36

• R-PPD / ALU (caserate cu folie Alu)
 Pret List + 3,40 Euro/m²

Toate saltelele sunt disponibile in variante cu sarma Inox:

- R-PPD / V2AD Insertie de sarma INOX / Plasa de sarma ZINCATA
- R-PPD / V2ADG Insertie de sarma INOX / Plasa de sarma INOX

ISOVER - SCPR 80 / SCPR 100



Material: Saltele din vata bazaltica cusute pe suport din plasa metalica rabbit
 Densitate - SCPR 80 ~ 80 kg/m³
 Densitate - SCPR 100 ~ 100 kg/m³
 Domeniul temperaturii de utilizare vata bazaltica: max. 700 °C
 Coeficient de conductibilitate termică: $\lambda_D = 0,034 \text{ W}/(\text{m}^*\text{K})$
 Categoria de inflamabilitate: A1

Grosime (mm)	Latime (mm)	SCPR 80			SCPR 100		
		Lungime (mm)	m ² / ambalaj	Pret (€/m ²)	Lungime (mm)	m ² / ambalaj	Pret (€/m ²)
50	1.000	5.000	5,0	7,05	4.000	4,0	8,19
60	1.000	4.000	4,0	7,88	3.000	3,0	9,36
70	1.000	3.000	3,0	9,61	-	-	-
80	1.000	3.000	3,0	9,83	3.000	3,0	11,71
100	1.000	3.000	3,0	11,77	2.500	2,5	14,04



Carlige		
Lungime (mm)	buc./cutie	Pret (€/cutie)
95	100	4,51
115	100	4,69

ROCKWOOL - PROROX, WM 80 / WM 105

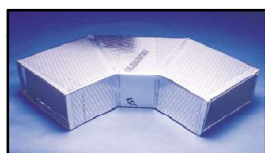
Material: Saltele din vata bazaltica cusute pe suport din plasa metalica rabbit
 Densitate - Rockwool WM 80 ~ 85 kg/m³
 Densitate - Rockwool WM 105 ~ 105 kg/m³
 Domeniul temperaturii de utilizare vata bazaltica: max. 640 °C
 Categoria de inflamabilitate: A1 - EN13501/1

Grosime (mm)	Latime (mm)	Lungime (mm)	m ² / ambalaj	Pret (€/m ²)	
				WM 80	WM 105
40	1.000	5.000	5,0	7,53	8,11
50	1.000	4.000	4,0	8,79	9,43
60	1.000	3.000	3,0	10,05	11,23
80	1.000	2.500	2,5	12,00	13,82
100	1.000	2.000	2,0	14,57	16,94



Climaver

ISOVER - Climaver



Panouri rigide din vata minerala de sticla pentru canale de ventilatie si climatizare. Datorita proprietatilor fonoabsorbante ale vatei minerale de sticla, utilizarea conductelor confectionate din panouri Climaver este cea mai buna solutie pentru reducerea zgomotului din instalatie. Se pot utiliza pentru canale de ventilatie si climatizare in care temperatura maxima a aerului din interiorul conductei nu depaseste 90 grade C

Tip	Grosime mm	Dimensiune mm x mm	m ² / ambalaj	Clasa de la foc	Pret (€/m ²)
Climaver Plus R	25	3.000 x 1.190	24,99	B-s1, d0	20,43
Climaver A2	25	3.000 x 1.190	21,42	A2-s1, d0	28,33
Climaver A2 Neto	25	3.000 x 1.190	21,42	A2-s1, d0	27,53
Climaver Neto	25	3.000 x 1.190			22,10
Climaver Plata BLACK	25	3.000 x 1.190			19,43

Panourile de tip Climaver Plus R, Climaver A2 si Climaver A2 Neto au conductivitatea termica de 0,032 W/(m*K), viteza maxima admisa de circulatia aerului in conductele confectionate fiind de 18 m/s la presiuni de 800 Pa si o temperatura de maxim 90 grade C.

Accesorii - Climaver			
Tip	cantitate	UM	Pret (€/UM)
Trusa scule Climaver mm	3 scule/pac.	pac.	441,08
Trusa scule mm + mtr	5 scule/pac.	pac.	525,30
Lame de rezerva Climaver	20 lame/pac.	pac.	67,63
Profil Perfiver L	80 buc. x 1,155m = 92,4 m/pac.	m	2,43
Profil Perfiver H	20 buc. x 2m = 40 m/pac.	m	5,90
Banda imbinare Climaver	12 buc. x 50m = 600 m/pac.	buc.	24,05
Adeziv Climaver	12 buc. x 1 ltr. = 12 ltr./pac.	buc.	11,00
Rigla Climaver mm	1 rigla/pac.	pac.	472,58
Capsator Climaver	1 buc.	buc.	140,85
Capse Climaver	5.000 buc./pac.	pac.	12,55
Marker Climaver	18 buc./pac.	pac.	55,10



Material:

Placi din vata minerala bazaltica pentru izolatii termica si acustica.

Categoria de inflamabilitate:

Euroclasa: A1

Grosime mm	Tip	m ² / ambalaj	Preț (RON/m ²)	
			fara folie	cu folie Alu
50	PLE 30 kg/m ³ λ _D = 0,040	4,80	11,39	20,84
60		3,60	13,66	23,20
80		2,40	18,25	27,71
100		2,40	22,78	32,33
120		2,40	27,38	36,84
40		PLU 40 kg/m ³ λ _D = 0,036	4,80	9,60
50	4,80		11,98	21,94
60	3,60		14,38	24,42
80	2,40		19,20	29,18
100	2,40		23,96	34,02
120	2,40		28,82	38,78
40	PLA 60 kg/m ³ λ _D = 0,035	4,80	14,13	23,24
50		4,80	17,68	26,76
60		3,60	21,20	30,32
80		2,40	28,27	37,38
100		2,40	35,32	44,42
120		1,80	42,48	51,49
50	PLN 90 kg/m ³ λ _D = 0,034	3,00	25,29	33,94
60		3,00	30,32	38,93
80		2,40	40,42	49,07
100		2,40	50,52	59,16

Grosime mm	Tip	m ² / ambalaj	Preț (€/m ²)	
			fara folie	cu folie Alu
30	Techrock 120 120 kg/m ³ λ _D = 0,037	6,00	6,63	8,12
40		4,80	8,83	10,32
50		3,60	11,05	12,54
60		3,00	13,26	14,75
80		2,40	17,68	19,17
100		1,80	22,09	23,58
120	1,80	26,51	28,00	
20	Steprock HD 150 kg/m ³ λ _D = 0,037	7,20	4,81	-
25		6,00	6,02	-
30		6,00	7,22	-
40		3,60	8,75	-
50		2,40	10,95	-
60		2,40	13,13	-

Dimensiune Placi:

Lungime: 1.000 mm

Latime: 600 mm

ISOVER - AP



Material:

Placi rigide din vata minerala de sticla, caserate cu impaslitura din fibre de sticla de culoare neagra, pentru imbunatatirea coeficientului de absorbtie fonica

Coeficient de conductibilitate termică:

λ_D = 0,033 W/(m*K)

Categoria de inflamabilitate:

Euroclasa: A1

Grosime (mm)	Tip	Lungime x Latime (mm x mm)	m ² / ambalaj	Preț (€/m ²)
20	AP 20	1.000 x 600	14,40	6,68
30	AP 30	1.000 x 600	9,60	6,95
40	AP 40	1.000 x 600	7,20	8,53
50	AP 50	1.000 x 600	6,00	10,13
60	AP 60	1.000 x 600	4,80	11,55
80	AP 80	1.000 x 600	3,60	14,55
100	AP 100	1.000 x 600	3,00	17,74

ISOVER - RIO



Material:

Temperatura maxima de utilizare:
Coeficient de conductibilitate termică:
Categoria de inflamabilitate:

Saltele rulate pentru toate tipurile de izolatii termice si fonice supuse unor sarcini reduse
max. 200 °C
 $\lambda_D = 0,042 \text{ W}/(\text{m}^*\text{K})$
Euroclasa: A1

Grosime (mm)	Tip	Lungime x Latime (mm x mm)	m ² / ambalaj	Preț (RON / m ²)
50	RIO 5	13.000 x 1.200	15,60	5,32
80	RIO 8	9.000 x 1.200	10,80	8,69
100	RIO 10	7.500 x 1.200	9,00	10,19
120	RIO 12	6.500 x 1.200	7,80	12,83
140	RIO 14	5.500 x 1.200	6,60	14,96
160	RIO 16	5.000 x 1.200	6,00	16,73
180	RIO 18	4.500 x 1.200	5,40	19,33
200	RIO 20	4.000 x 1.200	4,80	21,57
2 x 50	RIO TWIN 10/5	2 x 7.500 x 1.200	18,00	5,09
2 x 60	RIO TWIN 12/6	2 x 6.500 x 1.200	15,60	6,51

ISOVER - DOMO



Material:

Temperatura maxima de utilizare:
Coeficient de conductibilitate termică:
Categoria de inflamabilitate:

Saltele rulate pentru toate tipurile de izolatii termice si fonice
max. 200 °C
 $\lambda_D = 0,039 \text{ W}/(\text{m}^*\text{K})$
Euroclasa: A1

Grosime (mm)	Tip	Lungime x Latime (mm x mm)	m ² / ambalaj	Preț (RON / m ²)
80	DOMO 8	9.000 x 1.200	10,80	9,20
100	DOMO 10	7.500 x 1.200	9,00	10,80
120	DOMO 12	6.000 x 1.200	7,20	13,60
140	DOMO 14	5.000 x 1.200	6,00	15,85
160	DOMO 16	5.000 x 1.200	6,00	17,73
180	DOMO 18	4.000 x 1.200	4,80	20,49
200	DOMO 20	3.500 x 1.200	4,20	22,87
2 x 50	TWIN 10/5	2 x 7.500 x 1.200	18,00	5,40
2 x 60	TWIN 12/6	2 x 6.000 x 1.200	14,40	6,90

ISOVER - AKUSTO



Material:

Temperatura maxima de utilizare:
Coeficient de conductibilitate termică:
Categoria de inflamabilitate:

Saltele rulate pentru izolarea fonica si termica peretilor despartitori.
max. 200 °C
 $\lambda_D = 0,039 \text{ W}/(\text{m}^*\text{K})$
Euroclasa: A1

Grosime (mm)	Tip	Lungime x Latime (mm x mm)	m ² / ambalaj	Atenuare zgomot aerian Rw(dB)	Preț (RON / m ²)
75	AKUSTO 7.5	2 x 9.000 x 600	10,80	47	8,10
100	AKUSTO 10	2 x 7.500 x 600	9,00	50	10,80
2 x 50	AKUSTO 5 TWIN	2 x 9.000 x 600	18,00	44	5,40



Aparat ptr. Cuie de sudura	
Descriere	Preț (€/buc.)
Aparat cu pistol fara cutie - BOHL GS 45-3	1.937,00 net
Pistol - BOHL PCP 45-3	627,90 net
Cutie pt. Aparat	228,00
Set Accesorii / 4 Inel; 1 Magnet; 1 Dorn; 1 Husa	166,26
Inel de contact	19,05
Magnet seiba	57,16
Dorn ptr. Motage	26,99
Husa de izolare	19,15



Cuie de fixare prin sudura 1.000 buc./cutie		
LAM	Lungime (mm)	Preț (€/cutie)
20	19,0	190,16
30	28,5	195,08
40	38,0	197,54
50	47,6	200,00
60	54,0	214,77
	62,0	219,70
80	72,0	228,93
100	89,0	238,77



Cuie de fixare - adeziv 250 buc./cutie		
LAM	Lungime (mm)	Preț (€/cutie)
20	25,0	99,48
30	33,0	102,12
40	43,0	107,32
50	53,0	112,65
60	64,0	143,18
80	85,0	131,04

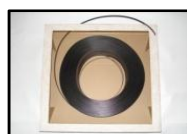


Aparat ptr. Cuie de sudura - Rabitz	
Descriere	Preț (€/buc.)
Aparat cu pistol - BOHL GH 95	3.405,00 net
Pistol - BOHL PMH 95	la cerere
Cuie fara seiba: Ø 3-6mm / Lungime 65-420mm	la cerere
Seiba de sigurare ptr. Cuie	la cerere



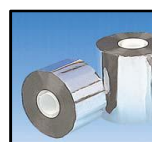
Carlige - Rabitz		
Lungime (mm)	buc./cutie	Preț (€/cutie)
95	100	4,51
115	100	4,69

Diverse - Accesorii		
Descriere	Preț (€/UM)	UM
Banda KU pt. canale de ventilatii 1.000 m/rola	21,61	rola
Cleme pt. banda KU 1.000 buc./punga	56,82	punga
Spray adeziv 500 ml	12,15	buc.
Sarma zincata 2,5 kg/cutie	5,69	kg
Dispozitiv cu curea pt. banda adeziv	125,21	buc.
Cuțit de despicare - 320 mm lama	19,80	buc.





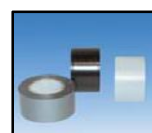
Banda adezivata ALU		
Dimensiune	buc./carton	Pret (€/buc.)
50 mm x 50 m	24	3,78
75 mm x 50 m	16	5,66
100 mm x 50 m	12	7,56
50 mm x 100 m	24	7,56
75 mm x 100 m	16	11,32
100 mm x 100 m	12	15,12



Banda adezivata poliester suflata cu aluminiu		
Dimensiune	buc./carton	Pret (€/buc.)
50 mm x 100 m	54	3,65
75 mm x 100 m	36	5,18
100 mm x 100 m	27	7,10



Banda adezivata ALU-NET ranforsata cu fibra de sticla		
Dimensiune	buc./carton	Pret (€/buc.)
50 mm x 50 m	24	5,42
75 mm x 50 m	16	7,96



Banda adeziva PVC		
Dimensiune	buc./carton	Pret (€/buc.)
30 mm x 10 m	22	3,24
30 mm x 25 m	22	6,51
50 mm x 10 m	14	4,84
50 mm x 25 m	14	10,72



Manseta - 10m / Rol.			
ISO / mm	buc./carton	Pret (€/buc.)	
		ALU-met.	PVC-gri
20	5	7,22	8,13
25	5	8,13	9,23
30	5	8,13	9,23
40	5	11,14	12,79
50	5	12,61	15,25
60	5	14,52	16,88
70	5	16,90	19,45
80	5	19,18	20,96
90	5	21,65	21,61
100	5	24,39	23,86



PROMAT - placi Antifoc

Tip	Grosime (mm)	Lungime x Latime (mm x mm)	Clasa Antifoc	buc. / m ² ambalaj	Preț (€/m ²)
Promatect L500	35	2.500 x 1.200	L 60	25 / 75,0	-
Promatect AD	40	2.500 x 1.200	L 90 / 120	20 / 60,0	54,13
Promatect L500	50	2.500 x 1.200	L 120	16 / 48,0	87,70
Promatect L500	60	2.500 x 1.200	L 180	15 / 45,0	105,30
Promatect H - Muffe	10	1.250 x 100	-	480 / 48,0	5,17 €/buc.

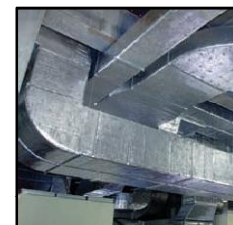


Adeziv	UM / cutie	Preț (€/kg)
Promat K 84 - 1kg	10 buc.	7,32
Promat K 84 - 15kg	15 kg	5,80
Promat Mastic	20 kg	2,86



ROCKWOOL - Conlit Ductrock 90 / 120

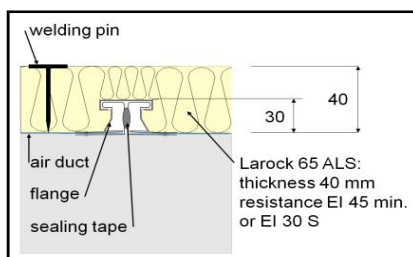
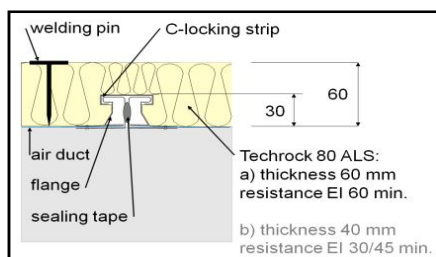
Tip	Grosime (mm)	Lungime x Latime (mm x mm)	Clasa Antifoc	buc. / m ² ambalaj	Preț (€/m ²)
Ductrock 90 (~300 kg/m ³)	60	1.500 x 1.200	L 90	20 / 36,0	49,98
Ductrock 120 (~320 kg/m ³)	60	1.500 x 1.200	L 120	20 / 36,0	53,75



Adeziv	kg / galeata	Preț (€/kg)
Conlit Fix - 1kg	18 buc.	6,45
Conlit Fix - 20kg	20 kg	5,44

ROCKWOOL - PYROROCK

Tip	Grosime (mm)	Lungime x Latime (mm x mm)	Clasa Antifoc	m ² / ambalaj	Preț (€/m ²)
Larock 65 ALS	40	6.000 x 1.000	EI 30	6,00	7,98
Larock 65 ALS	60	4.000 x 1.000	EI 45	4,00	10,26
Techrock 80 ALS	40	1.000 x 600	EI 30 / EI 45	7,20	8,03
Techrock 80 ALS	60	1.000 x 600	EI 60	4,80	11,41



KNAUF - Fireboard



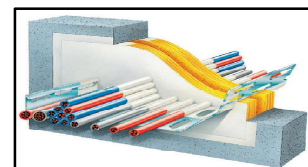
Tip	Grosime (mm)	Lungime x Latime (mm x mm)	Preț (€/m ²)
Knauf Fireboard	15	2.000 x 1.250	21,00
	20	2.000 x 1.250	24,88
	25	2.000 x 1.250	31,79
	30	2.000 x 1.250	37,04

Clasa Antifoc	Fireboard (mm)	Clasa Antifoc	Fireboard (mm)	Clasa Antifoc	Fireboard (mm)
L 30	2 x 15	E 30	25	I 30	2 x 15
L 60	2 x 15	E 60	20 + 15	I 60	2 x 15
L 90	2 x 20	E 90	2 x 25	I 90	2 x 20
L 120	2 x 25	E 120	2 x 25	I 120	2 x 25

Accesorii	Preț
Knauf Fireboard Mastic - 5 kg/sac	2,40 €/kg
Profil-sina 50/35/0,7mm - 4,0m Lungime	26,77 €/buc.



PLACI - 150 kg/m³ densitate

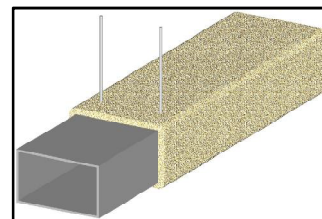


Grosime (mm)	Lungime x Latime (mm x mm)	m ² / ambalaj	Preț (€/m ²)	
			cu Intumex CSP	Standard
50	1.000 x 600	2,40	46,58 (1-parte)	13,70
60	1.000 x 600	2,40	49,28 (1-parte)	16,40
80	1.000 x 600	1,80	87,66 (2-parti)	21,90

DOSSOLAN 3000

Material: Produse pentru protectie la foc prin stropire pentru canale de ventilatie.

Densitate: ~ 350 kg/m³
Clasa de foc: L 90 (MPA NRW) 55 mm (~18 kg/m²)
 L 90 (FR - Woippy) 30 mm (~11 kg/m²)
 L 120 (FR - Woippy) 35 mm (~12 kg/m²)



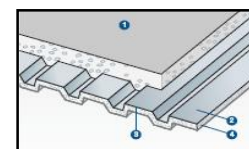
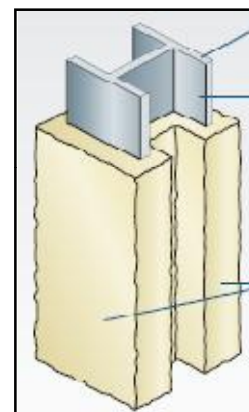
Descriere	pH	kg / sac	kg / Pal.	Pret (€/kg)
Dossolan 3000	11	25,0	750,0	2,66

PROMAT - Spray Antifoc / structuri metalice

Material: Produse pentru protectie la foc, termotehnica, protectii hidrofuge si invelitori prin stropire pentru structuri metalice.

PROMAT Igniplaster: Mortar pe baza de lianti hidraulici, fibre micronicate de vata minerala aditivata.
PROMAT Cafco: Mortar pe baza de vermiculit.
PROMAT Firofeu: Mortar pe baza de lianti hidraulici, fibre micronicate de vata minerala aditivata.

Descriere	Clasa Antifoc	Densitate (kg/m ³)	pH	λ W/(m*K)	Pret (€/kg)
IGNIPLASTER	F30 - F240	~800	2 - 3	~0,100	la cerere
CAFCO Mandolite CP2	F30 - F240	~500	-	0,095	
CAFCO 300	F30 - F240	~500	-	0,078	
FIBROFEU	F30 - F360	~200	9 - 10	0,040 - 0,045	



Accesorii - Antifoc



Accesorii		
Descriere	buc./cutie	Pret (€/cutie)
SPAX 5 x 80mm zincata TG TORX	200	20,51
MPC Sistem-sina 41/41/3mm - 3,04 m Lungime	1	54,08
MPC Diblu - otel M10	100	60,23
MPC Diblu - otel M12	50	48,92
Tija filetata M10 / 3m Lungime	1	10,70
Tija filetata M12 / 3m Lungime	1	15,09
Piulita zincata M10	100	14,50
Piulita zincata M12	100	22,20
Capete TORX - Bit TX25	1	1,87



Aparat ptr. Cuie de sudura

Descriere	Pret (€/buc.)
Aparat cu pistol fara cutie - BOHL GS 45-3	1.937,00 net
Pistol - BOHL PCP 45-3	627,90 net
Cutie pt. Aparat	228,00
Set Accesorii / 4 Inel; 1 Magnet; 1 Dorn; 1 Husa	166,26
Inel de contact	19,05
Magnet seiba	57,16
Dorn ptr. Motage	26,99
Husa de izolare	19,15



Cuie de fixare prin sudura 1.000 buc./cutie

LAM	Lungime mm	Pret (€/cutie)
20	19,0	190,16
30	28,5	195,08
40	38,0	197,54
50	47,6	200,00
60	54,0	214,77
	62,0	219,70
80	72,0	228,93
100	89,0	238,77

MAKITA - Seturi / 2,0 Ah

Qty.	Descriere
1 buc.	Akku - Bohrmaschine 12 V
1 buc.	Akku - Winkelbohrmaschine 12 V
1 buc.	Akku - Lanterna 200 min.
2 buc.	Akku - 2,0 Ah
1 buc.	Incarcator
1 buc.	Cutie



Pret final - Set: 269,- €

Intumex® CSP

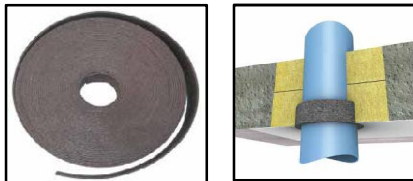
Acoperire antifoc



Descriere	kg / galeata	Preț (€/kg)
Intumex CSP-L (Vopsea)	12,5	13,23
Intumex CSP-M (Kit)	12,5	13,23

Intumex® Wrap

Banda expandabila antifoc



Descriere	Grosime	Latime	Lungime	Preț (€/buc.)
Intumex Wrap	2,5 mm	50 mm	18 m	397,92

Intumex® AS

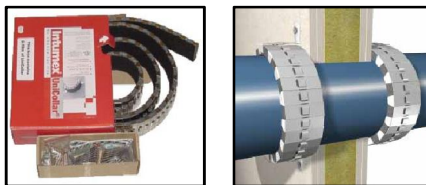
Acoperire antifoc pentru cabluri



Descriere	kg / galeata	Preț (€/kg)
Intumex AS	12	20,09

Intumex® UC

Banda expandabila antifoc



Descriere	Grosime	Lungime	Preț (€/buc.)
Intumex UC	10 mm	2.250 mm / 150 segments	199,45

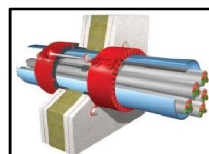
Impachetare:

8 buc. Banda / 16 buc. rupturi duble / 24 buc. rupturi simple

Intumex® RS10

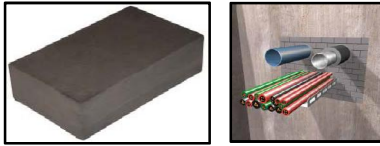
Mansete antifoc

ext. Ø tevi (mm)	int. Ø mansete (mm)	ext. Ø mansete (mm)	Gaura (mm)	Lungime	
				30 mm	60 mm
				Preț (€/buc.)	Preț (€/buc.)
32	40	52	60	26,68	-
40	48	65	70	27,95	-
50	58	74	80	29,98	37,25
56	64	81	90	33,63	39,83
63	71	88	100	34,58	42,58
75	85	107	120	37,23	48,58
90	100	120	130	39,50	53,78
110	120	142	150	44,48	60,95
125	135	157	170	51,33	79,68
160	170	200	190	66,53	94,70
200	210	240	250	-	118,78
225				-	140,75
250	262	320	330	-	173,15
315	317	375	385	-	245,05



Intumex® FB

Caramida antifoc



Descriere	Dimensiune (mm)	buc. / cutie	Pret (€/buc.)
Intumex FB	200 x 120 x 60	16	39,31

Intumex® V

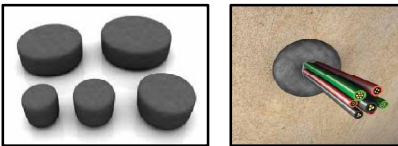
Mortar antifoc



Descriere	kg / sack	Pret (€/kg)
Intumex V	25	3,69

Intumex® FP

Dopuri antifoc



ø (sus / jos) mm	buc. / cutie	Pret (€/buc.)
65 / 75	42	20,82
80 / 90	30	24,61
110 / 120	20	28,95
125 / 135	14	32,33
140 / 150	9	33,75
170 / 180	8	44,24
210 / 220	6	57,90
260 / 270	2	72,62

Intumex® SC

Acoperire antifoc pentru oțel



Descriere	kg / galeata	Pret (€/kg)
Intumex SC	20	16,62

Intumex® PS

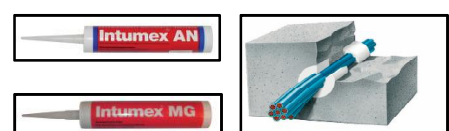
Perne antifoc



Descriere	Dimensiune (mm)	buc. / cutie	Pret (€/buc.)
Intumex PS 300	320 x 100 (~1 ltr.)	5	15,44
Intumex PS 750	320 x 200 (~2 ltr.)	10	17,09

Intumex® AN / MG

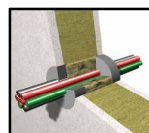
Kit elastic antifoc



Descriere	buc. / cutie	Pret (€/buc.)
Intumex AN - 310 ml	25	6,43
Intumex AN - 600 ml	20	11,93
Intumex MG - 310 ml	24	14,11

Intumex® SN

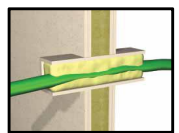
Silikon antifoc



Descriere	buc. / cutie	Pret (€/buc.)
Intumex SN - 310 ml	24	11,18

Intumex® FS 1

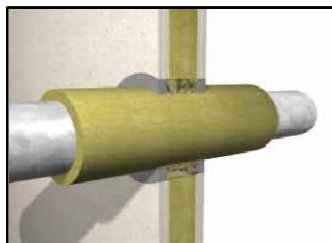
Spuma antifoc



Descriere	buc. / cutie	Pret (€/buc.)
Intumex FS 1 - 750 ml	12	27,74

CONLIT - Cochilii caserate cu folie ALU

Sistem Antifoc pentru tevi otel prin perete



Material: Cochilii de vata bazaltica caserate cu folie Alu armata cu fibra de sticla.

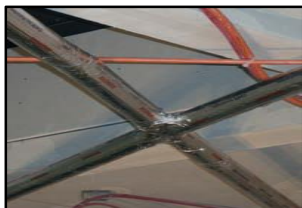
Densitate: **min. 150 kg/m³**

Lungimea: 1 m

int. Ø Cochilii (mm)	Grosime Izolatii (mm)	m/carton	Gaura Perete (mm)	Pret (€/m)
10	25,0	42	60	15,17
12	24,0	42	60	15,34
14	23,0	42	60	15,68
15	22,5	42	60	15,68
16	22,0	42	60	15,88
17	21,5	42	60	16,23
18	21,0	42	60	16,40
20	20,0	42	60	19,23
21	19,5	42	60	19,40
22	19,0	42	60	19,57
25	17,5	42	60	22,05
26	17,0	42	60	22,22
27	16,5	42	60	22,22
28	26,0	20	80	23,98
32	24,0	20	80	25,22
34	23,0	20	80	25,41
35	22,5	20	80	26,27
40	20,0	20	80	29,44
42	19,0	20	80	30,15
42	29,0	14	100	38,08
48	26,0	14	100	41,78
50	25,0	14	100	42,68
54	38,0	9	130	61,53
58	36,0	9	130	63,30
60	35,0	9	130	64,18
63	33,5	9	130	66,12
64	33,0	9	130	66,82
64	58,0	4	180	87,27

int. Ø Cochilii (mm)	Grosime Izolatii (mm)	m/carton	Gaura Perete (mm)	Pret (€/m)
75	52,5	4	180	88,87
76	37,0	5	150	73,70
76	52,0	4	180	89,57
78	36,0	5	150	73,70
83	33,5	5	150	74,76
89	30,5	5	150	75,46
89	65,5	2	220	110,71
90	65,0	2	220	111,07
102	39,0	4	180	91,51
108	36,0	4	180	92,74
108	71,0	1	250	148,99
110	35,0	4	180	94,50
110	70,0	1	250	150,91
113	68,5	1	250	155,16
114	33,0	4	180	95,20
114	68,0	1	250	161,49
133	43,5	2	220	115,30
135	42,5	2	220	116,19
140	40,0	2	220	117,42
140	70,0	1	280	171,19
159	30,5	2	220	119,89
160	30,0	2	220	122,17
169	40,5	2	250	162,02
210	40,0	1	290	175,96
219	40,0	1	299	180,72
274	40,0	1	354	205,74
324	40,0	1	404	227,25
326	40,0	1	406	231,30

CONLIT - Cochilii caserate cu folie ALU



Sistem Antifoc pentru Sprinkler si Piloni otel

Material: Chochilii de vata bazaltica caserate cu folie Aluminiu armata cu fibra de sticla.
 Densitate: **min. 150 kg/m³**
 Lungimea: 1 m

Tevi ext. Ø (mm)	Grosimile de izolare (mm)												
	20		25		30		40		50		60		
	Pret (€/m)	m/cutie	Pret (€/m)	m/cutie	Pret (€/m)	m/cutie	Pret (€/m)	m/cutie	Pret (€/m)	m/cutie	Pret (€/m)	m/cutie	
28	22,58	30	25,04	25	28,21	20	45,49	12	55,36	8	64,00	4	
35	25,57	25	28,04	16	33,51	16	47,25	9	56,24	7	68,41	4	
42	30,69	20	33,68	16	38,08	12	52,19	9	59,43	6	72,46	4	
48	36,32	16	39,67	12	41,78	12	53,60	9	63,12	5	78,28	4	
57			-	-	45,36	9	55,39	6	67,81	5	82,59	4	
60			45,32	9	46,72	9	55,19	6	69,28	5	84,10	4	
64			-	-	49,11	9	59,27	6	72,16	5	86,90	3	
70			47,78	9	51,49	9	61,53	5	74,93	5	89,91	3	
76			49,54	9	52,72	7	64,71	5	78,98	4	93,62	3	
89			55,71	8	69,28	6	71,41	5	87,62	4	98,38	1	
102			-	-	73,60	4	75,93	4	90,56	1	105,20	1	
108			64,35	6	77,75	4	81,63	4	93,26	1	110,71	1	
114			65,76	6	80,23	4	86,04	3	98,72	1	114,06	1	
133			72,82	3,0	89,40	4	95,73	1	107,55	1	124,47	1	
			F 30				F 60				F 90		

CONLIT - Cochilii necaserate



Sistem Antifoc pentru Sprinkler si Piloni otel

Material: Chochilii de vata bazaltica necaserate.
 Densitate: **min. 150 kg/m³**
 Lungimea: 1 m

Tevi ext. Ø (mm)	Grosimile de izolare (mm)													
	20		25		30		40		50		60		70	
	Pret (€/m)	m/cutie	Pret (€/m)	m/cutie	Pret (€/m)	m/cutie	Pret (€/m)	m/cutie	Pret (€/m)	m/cutie	Pret (€/m)	m/cutie	Pret (€/m)	m/cutie
12											48,24	7	57,32	6
28	17,81	30	22,58	25	25,40	20	38,96	12	48,14	8	55,54	4	-	-
35	20,63	25	25,04	16	28,04	16	40,56	9	48,84	7	57,48	4	-	-
42	24,87	20	31,39	16	31,56	12	44,79	9	51,49	6	61,88	4	-	-
48	30,15	16	32,96	12	36,15	12	46,02	9	54,84	5	65,67	4	-	-
54			-	-	38,38	10	47,49	8	57,20	5	66,16	4	-	-
60			34,91	9	40,56	9	49,19	6	60,30	5	72,99	4	-	-
76			42,85	9	45,49	7	56,42	5	68,58	4	81,46	3	101,90	1
89			46,55	8	57,83	6	65,42	5	72,82	4	84,80	1	105,08	1
102			-	-	61,35	6	67,96	5	76,15	4	90,24	1	113,36	1
108			53,60	6	64,71	4	71,06	4	81,10	1	96,26	1	117,95	1
114			56,07	6	70,88	4	78,98	3	85,86	1	99,44	1	122,90	1
133			60,66	4	74,40	4	83,22	1	93,62	1	108,44	1	133,64	1
140			64,52	1	77,22	2	89,91	1	98,55	1	113,01	1	139,28	1
159			72,12	1	91,16	2	97,85	1	106,85	1	120,42	1	164,31	1
			F 30				F 60				F 90			



Material:

Alu 99,5

Teava:

Lungime: 1m cu 6 gauri à 3,2mm

Grosimea tabla Alu la \varnothing teava:

\varnothing 80 pana \varnothing 200 mm - 0,6 mm

\varnothing 210 pana \varnothing 350 mm - 0,8 mm

\varnothing 360 pana \varnothing 500 mm - 1,0 mm



Tevi ext. \varnothing (mm)	Raza (mm)	Teava (€/m)	Coturi 90° (€/buc.)	Coturi 45° (€/buc.)	Forma T (€/buc.)	Conus (€/buc.)	Capac (€/buc.)
80	70	5,68	6,46	4,85	4,86	4,86	2,29
90	75	5,68	6,46	4,85	4,86	4,86	2,39
100	80	6,08	7,03	5,27	5,27	5,27	2,47
110	85	6,49	7,38	5,54	5,54	5,54	2,63
120	90	6,94	7,53	5,65	5,65	5,65	2,68
130	95	7,35	8,20	6,14	6,14	6,14	2,71
140	100	7,77	8,50	6,38	6,38	6,38	2,77
150	105	8,26	8,94	6,71	6,70	6,70	2,92
160	110	8,71	9,86	7,40	7,38	7,38	2,96
170	115	9,13	10,37	7,78	7,78	7,78	3,01
180	120	9,56	10,65	8,00	7,99	7,99	3,04
190	125	10,07	12,04	9,03	9,03	9,03	3,09
200	130	10,63	13,03	9,78	9,78	9,78	3,25
210	135	14,52	14,53	10,89	10,89	10,89	3,27
220	140	15,14	17,00	12,75	11,72	11,72	3,51
230	145	15,69	17,85	13,38	13,38	13,38	3,58
240	150	16,52	18,34	13,75	13,75	13,75	3,67
250	155	16,87	19,87	14,90	14,90	14,90	3,96
260	160	17,55	20,44	15,33	15,33	15,33	4,44
270	165	18,10	21,20	15,90	15,90	15,90	4,74
280	170	18,66	22,76	17,08	17,08	17,08	5,19
290	175	19,29	23,82	17,86	17,86	17,86	5,57
300	180	19,85	24,34	18,26	18,26	18,26	6,04
310	190	20,23	25,32	19,00	19,00	19,00	6,34
320	195	20,79	25,95	19,46	19,46	19,46	6,61
330	200	21,35	27,03	20,27	20,27	20,27	6,82
340	210	22,10	28,07	21,05	21,05	21,04	7,03
350	220	22,95	28,69	21,53	21,53	21,52	7,26
360	230	29,67	29,46	22,10	22,10	22,10	7,68
370	240	30,39	30,35	22,76	22,76	22,76	7,97
380	250	31,10	31,14	23,37	23,37	23,36	8,22
390	260	32,38	31,90	23,93	23,93	23,92	8,55
400	270	33,61	32,76	24,57	24,57	24,57	9,00
410	280	34,84	33,51	25,14	25,14	25,14	9,47
420	290	35,59	34,50	25,88	25,88	25,88	9,89
430	300	36,33	35,10	26,32	26,32	26,32	10,32
440	310	37,06	35,81	26,87	35,81	35,81	10,77
450	320	37,67	36,82	27,62	36,82	36,82	11,35
460	330	39,21	48,90	36,68	48,90	48,90	13,08
	360		52,55	39,41			
	460		57,21	42,91			
470	340	39,88	50,55	37,91	50,55	50,55	13,43
	400		55,88	41,91			
	500		60,74	45,56			
480	350	41,30	52,22	39,16	52,22	52,21	13,78
	400		57,16	42,87			
	500		62,09	46,57			
490	360	44,03	53,91	40,44	53,91	53,91	14,03
	400		59,21	44,41			
	510		64,23	48,18			
500	370	40,48	55,35	41,51	55,35	55,35	15,48



Cutie pt. Flansa - 2 parti

ext. Ø (mm)	Lungime				
	de la 0 mm pana la 204 mm	de la 205 mm pana la 300 mm	de la 301 mm pana la 440 mm	de la 441 mm pana la 650 mm	de la 651 mm pana la 900 mm
	€/ buc.	€/ buc.	€/ buc.	€/ buc.	€/ buc.
150 - 175	40,98	45,52	51,21	56,90	62,60
180 - 195	43,38	48,20	54,23	60,26	66,27
200 - 225	45,73	50,88	57,24	63,61	69,96
230 - 245	48,20	53,55	60,26	66,94	73,64
250 - 275	50,61	56,24	63,26	70,29	77,33
280 - 295	53,01	58,92	66,27	73,64	81,00
300 - 325	55,43	61,59	69,28	76,98	84,69
330 - 345	59,04	65,61	73,80	82,00	90,22
350 - 375	62,66	69,63	78,32	87,03	95,73
380 - 395	66,27	73,64	82,84	92,04	101,25
400 - 425	69,89	77,66	87,36	97,08	106,78
430 - 445	73,51	81,67	91,88	102,10	112,30
450 - 475	77,12	85,70	96,40	107,12	117,82
480 - 495	80,73	89,75	100,92	112,13	123,35
500 - 525	84,35	93,72	105,44	117,15	128,86
530 - 545	87,97	97,74	109,96	122,18	134,39
550 - 575	91,58	101,76	114,47	127,19	139,92
580 - 595	96,40	107,12	120,50	133,90	147,26
600 - 625	101,23	112,46	126,52	140,58	154,64



Cutie pt. Valva - 2 parti

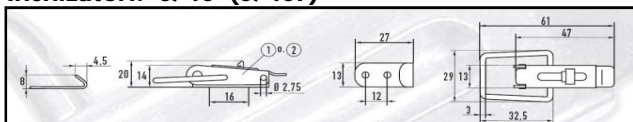
ext. Ø (mm)	Lungime				
	de la 0 mm pana la 204 mm	de la 205 mm pana la 300 mm	de la 301 mm pana la 440 mm	de la 441 mm pana la 650 mm	de la 651 mm pana la 900 mm
	€/ buc.	€/ buc.	€/ buc.	€/ buc.	€/ buc.
150 - 175	45,07	50,08	56,34	62,59	68,85
180 - 195	47,72	53,01	59,64	66,27	72,90
200 - 225	50,37	55,96	62,97	69,96	76,97
230 - 245	53,01	58,92	66,27	73,64	81,00
250 - 275	55,67	61,86	69,59	77,33	85,12
280 - 295	58,33	64,80	72,90	81,00	89,10
300 - 325	60,97	67,75	76,21	84,69	93,15
330 - 345	64,95	72,16	81,20	90,22	99,23
350 - 375	68,91	76,57	86,15	95,73	105,31
380 - 395	72,90	81,00	91,12	101,25	111,38
400 - 425	76,87	85,41	96,11	106,85	117,45
430 - 445	80,86	89,84	101,07	112,30	123,52
450 - 475	84,82	94,26	106,04	117,82	129,61
480 - 495	88,81	98,47	111,01	123,35	135,68
500 - 525	92,77	103,09	115,98	128,86	141,75
530 - 545	96,76	107,50	120,95	134,39	147,83
550 - 575	100,74	111,94	125,93	139,92	153,89
580 - 595	106,04	117,82	132,55	147,27	162,00
600 - 625	111,34	123,71	139,18	154,64	170,11



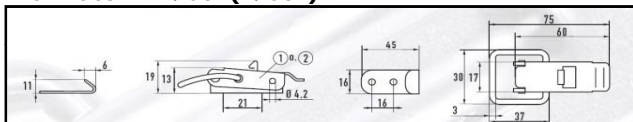
- Versiune:**
- **material:** oțel zincat / Inox A2 / calit
 - **cap special:** auto filetant / auto forant
 - **cu seiba:** Polyamid / EPDM cauciuc



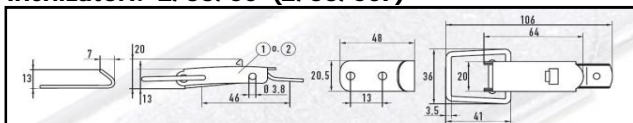
Inchizatori: 0/40 (0/40F)



Inchizatori: 1/60 (1/60F)



Inchizatori: 2/55/60 (2/55/60F)



Banda Alu ptr. Inchizatori				
Tip	Dim.	kg/rola	m/kg	Preț (€/kg)
Alu 99,5	20 x 1 mm	10 - 15	~ 18,5	14,43



Banda - Terostat VII		
Ø	Lungime (m)	Preț (€/buc.)
4 mm	120	50,73
5 mm	96	50,08



Banda Butyl - dublu adeziv Gerband 625		
Dimensiune	buc./carton	Preț (€/buc.)
15 mm x 30 m	40	10,30

Rola tabla - Latime 1 m				
Tip	Grosimea (mm)	kg/rola	m²/rola	€/kg
Alu 99,5	0,6	~ 100 kg	~ 62	la cerere
Alu 99,5	0,8	~ 100 kg	~ 46	
Alu 99,5	1,0	~ 100 kg	~ 37	
Zincat	0,40	~ 140 kg	~ 45	
Zincat	0,55	~ 140 kg	~ 33	
Zincat	0,75	~ 160 kg	~ 27	



Surub

Dim. (mm)	Tip	buc./cutie	Preț (€/cutie)
ø 4,2 x 9,5	zincat	1.000	38,32
ø 4,2 x 13,0	zincat	1.000	39,72
ø 4,8 x 19,0	zincat	500	35,29
ø 4,2 x 9,5	Inox / A2	1.000	82,84
ø 4,2 x 13,0	Inox / A2	1.000	85,62
ø 4,8 x 19,0	Inox / A2	500	80,12



POP - Nituri 1.000 buc./cutie	
Dim. (mm)	Preț (€/cutie)
ø 3,2 x 6,0	45,06
ø 3,2 x 8,0	47,22
ø 3,2 x 10,0	47,88
ø 3,2 x 12,0	51,57

F = cu siguranta

Tip		buc./cutie	Preț (€/buc.)
0/40	zincat	100	1,54
0/40F	zincat	100	1,95
0/40	Inox / A2	100	4,08
0/40F	Inox / A2	100	4,88

Tip		buc./cutie	Preț (€/buc.)
1/60	zincat	100	1,68
1/60F	zincat	100	2,39
1/60	Inox / A2	100	4,34
1/60F	Inox / A2	100	4,96

Tip		buc./cutie	Preț (€/buc.)
2/55/60	zincat	100	1,91
2/55/60F	zincat	100	2,18
2/55/60	Inox / A2	100	4,34
2/55/60F	Inox / A2	100	5,05

Unelte		
Nr.	Descriere	Pret (€/buc.)
1	Burghiu dublu HSS ø3,2mm - 10 buc./cutie	0,82
	Burghiu dublu HSS ø3,3mm - 10 buc./cutie	0,84
2	Unelte ptr. fixare gauri in tabla	15,02
3	Pistol ptr. POP Nituri	37,50
4	Ruleta 3m	5,84
	Ruleta 5m	14,09
5	Foarfece STUBAI ptr. Tabla - stanga	91,26
	Foarfece STUBAI ptr. Tabla - dreapta	93,42
6	Foarfece STUBAI ptr. Tabla - in linie	91,86
7	Compas cu fixare 250mm	43,78
	Compas cu fixare 300mm	60,75
8	Cleste - masurare ext. 300mm	24,98
9	Cleste manual - gaurit tabla 228mm	272,46
10	Seturi - Cleste manual - gaurit tabla ø3,0mm - ø4,2mm incl. matrita si stampila	la cerere
11	Sula 60mm	5,61
12	Stanley cutter - robust 18mm	11,12
	Lama robust Stanley - 10 buc./cutie	5,37
13	Sablon tabla Profi 5 - 100mm	22,72



MAKITA - Seturi / 2,0 Ah

Qty.	Descriere
1 buc.	Akku - Bohrmaschine 12 V
1 buc.	Akku - Winkelbohrmaschine 12 V
1 buc.	Akku - Lanterna 200 min.
2 buc.	Akku - 2,0 Ah
1 buc.	Incarcator
1 buc.	Cutie

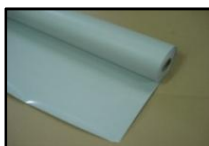


Pret final - Set:

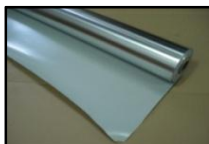
269,- €



Folie: PVC / PVC-Alu / Alu caserare / Alu 99,5



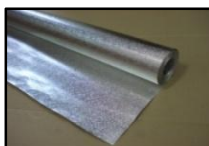
PVC Folie gri - B1				
Tip	Latime	Grosime	Lungime	Pret (€/m ²)
F-PVC 025	1.000 mm	0,35 mm	25 m	2,92
F-PVC 035	1.000 mm	0,35 mm	35 m	2,92



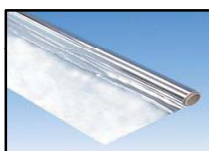
Isogenotec Folie / PVC-ALU					
Tip	Latime	Grosime	Lungime	m ² / rola	Pret (€/m ²)
F-Isogenotec 025	1.200 mm	0,35 mm	25 m	30 m ²	7,23



Folie Alu - caserare				
Tip	Latime	Grosime	Lungime	Pret (€/m ²)
Alu-Glasgelege	1.000 mm	18 µm	50 m	1,85



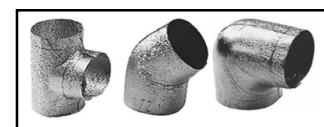
Alupak Folie				
Tip	Latime	Grosime	Lungime	Pret (€/m ²)
F-Alupak 025	1.000 mm	0,2 mm	25 m	5,26
F-Alupak 050	1.000 mm	0,2 mm	50 m	5,26



Alu 99,5 Folie				
Tip	Latime	Grosime	Lungime	Pret (€/m ²)
F-Alu99,5 050/5	500 mm	0,05 mm	50 m	3,03
F-Alu99,5 050	1.000 mm	0,05 mm	50 m	3,03
F-Alu99,5 100	1.000 mm	0,05 mm	100 m	3,03

Alupak / Coturi 90°

Tevi ext. Ø (mm)	Grosimile de izolare (mm)													
	20		30		40		50		60		80			
	buc./cutie	Pret (€/buc.)	buc./cutie	Pret (€/buc.)	buc./cutie	Pret (€/buc.)	buc./cutie	Pret (€/buc.)	buc./cutie	Pret (€/buc.)	buc./cutie	Pret (€/buc.)	buc./cutie	Pret (€/buc.)
18	100	2,96	50	3,48			40	4,97						
22	100	3,04	50	3,62	40	4,32	40	4,97						
28	100	3,28	50	3,72	40	4,48	40	5,74						
35	100	3,38	50	3,96	40	4,65	40	6,82						
42	50	3,62	50	4,04	40	4,97	30	7,22	20	11,99				
48	50	3,72	50	4,21	40	5,74	30	9,27	20	11,99				
60	50	4,04	50	4,65	40	6,82	25	10,48	20	12,90				
64	-	-	50	4,97	30	7,25	-	-	-	-				
70	-	-	30	5,74	25	8,84	20	11,99	20	13,83				
76	50	4,65	30	6,15	25	10,38	20	12,15	20	14,25	10	18,06		
89	30	5,82	25	8,94	25	11,73	20	13,17	20	15,18	10	19,72		
108	25	8,94	25	11,73	20	13,17	15	14,25	10	16,35	10	24,72		
114	25	10,45	25	12,15	15	13,68	15	17,05	10	18,06	-	-		
133			15	13,17	15	16,89	10	17,87	10	20,14	10	36,37		
140			15	14,25	15	17,05	10	19,27	10	21,09	10	36,37		
159			15	17,02	10	19,27	10	21,09	10	25,05	10	37,29		
168			15	17,75	10	20,05	10	24,57	10	32,85				





Isogenopak PVC / Coturi 90°



Tevi ext. Ø (mm)	Grosimile de izolare (mm)															
	20		25		30		40		50		60		80		100	
	buc./cutie	Pret €/buc.	buc./cutie	Pret €/buc.	buc./cutie	Pret €/buc.	buc./cutie	Pret €/buc.	buc./cutie	Pret €/buc.	buc./cutie	Pret €/buc.	buc./cutie	Pret €/buc.	buc./cutie	Pret €/buc.
17	440	1,05	27-20		27-25		180	2,00								
21	360	1,05	240	1,36	260	1,47	160	2,07								
27	300	1,36	240	1,36	260	1,47	160	2,45			48-50					
33	240	1,36	220	1,47	220	1,47	160	2,77	80	3,96	76-40					
42	260	1,47	220	1,89	160	1,96	120	3,26	48-50		76-40					
48	240	1,47	180	1,96	160	2,00	120	3,26	60	4,66	76-50					
54	180	2,00	160	2,45	160	2,77	80	4,24	60	5,52	60	7,43				
57	180	2,00	160	2,45	160	2,77	80	4,24	60	5,52	60	7,43				
64	-	-	-	-	140	2,77	-	-	60	6,23	-	-				
70	140	2,77	120	2,77	80	3,31	80	4,84	76-50		40	8,86				
76	120	2,77	120	2,77	80	3,31	60	5,91	40	6,63	40	8,86	40	14,28		
89	120	3,26	80	3,26	80	4,25	40	6,63	40	7,37	40	8,86	40	15,21		
102	89-30		89-35		108-30		40	7,19	108-50		108-60		108-80		108-100	
108	89-30		89-35		80	6,20	40	7,19	40	8,23	40	9,89	40	17,08	30	21,98
114	89-35		108-30		40	6,95	40	7,72	40	8,86	133-50		40	17,86	108-100	
133	108-30		108-40		114-40		114-50		60	9,76	40	12,94	40	21,46	25	22,56
140	114-30		114-30		105-50		114-50		60	9,76	40	12,94	40	21,46	133-100	
159	114-40		108-50		114-50		133-50		40	13,74	40	16,82	40	23,01	25	26,98
168			114-50		108-60		140-50		40	14,91	40	21,54	40	24,24	25	28,36
194					133-60				40	21,54	-	-	-	-	-	-
219									40	24,05	25	26,78	20	31,29	20	38,56
273											25	30,47	20	39,14	10	47,53

Isogenotec ALU-PVC / Coturi 90°



Tevi ext. Ø mm	Grosimile de izolare (mm)																	
	13		20		25		30		40		50		60		80		100	
	buc./cutie	Pret €/buc.	buc./cutie	Pret €/buc.	buc./cutie	Pret €/buc.	buc./cutie	Pret €/buc.	buc./cutie	Pret €/buc.	buc./cutie	Pret €/buc.	buc./cutie	Pret €/buc.	buc./cutie	Pret €/buc.	buc./cutie	Pret €/buc.
18	200	2,88	200	3,00	100	3,44	160	3,88	60	6,13	40	9,25						
22	200	2,88	150	3,05	100	3,73	160	4,00	60	6,13	40	9,63						
28	200	3,00	150	3,18	100	3,99	160	4,75	60	6,31	40	10,00						
35	150	3,05	150	3,72	100	4,91	100	5,13	60	10,00	40	10,25	25	15,99			25	42,48
42			150	4,13	100	5,25	60	6,10	60	10,25	40	10,62	25	16,75	10	29,99	-	-
48			150	5,44	100	5,88	60	6,45	60	10,50	40	13,74	25	17,37	10	31,24	-	-
54			100	5,57	-	-	60	6,75	-	-	40	14,25	-	-	-	-	-	-
60			100	5,88	100	7,63	60	7,88	40	11,75	40	16,79	25	17,49	10	31,24	10	46,74
64			100	7,25	-	-	60	10,56	-	-	25	17,48	25	17,74	-	-	-	-
70			40	10,25	40	10,60	60	10,93	40	15,80	25	19,01	25	18,37	-	-	-	-
76			40	10,56	40	10,74	60	10,93	25	17,49	25	19,01	25	26,18	10	31,24	10	47,87
89			40	10,99	40	12,88	40	14,99	25	17,74	25	20,24	25	27,62	10	36,98	10	48,84
102			25	18,12	25	18,62	25	18,88	25	18,74	25	21,37	-	-	-	-	-	-
108			25	19,25	25	19,99	25	20,24	25	24,24	25	27,24	25	33,99	10	44,98	10	51,11
114			25	19,49	25	20,24	25	21,06	25	25,24	10	27,49	25	35,98	10	44,98	10	52,23
133					10	32,55	25	33,87	10	44,12	10	44,98	10	49,61	10	57,73	10	53,73
140					10	34,05	10	46,98	10	45,23	10	45,98	10	52,11	10	61,85	10	68,28
159					10	37,70	10	48,30	10	46,11	10	47,48	10	54,98	10	63,86	10	73,53
168					10	40,98	10	49,86	10	63,86	10	68,72	10	70,60	10	66,48	10	79,72
194					-	-	10	52,73	10	69,97	10	69,97	10	71,22	10	87,35	10	87,47
219					10	41,98	10	54,23	10	71,85	10	72,97	10	87,21	10	88,09	10	88,71
267											10	87,21			10	88,71	10	88,71

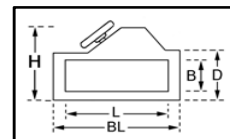


Cutie pt. Valva: ALU; ALU-PVC

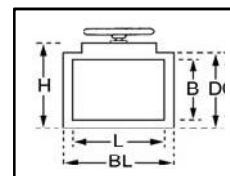


Domeniul temperaturii de utilizare: pana +100 °C

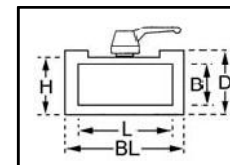
DN	interior		exterior			buc./ cutie	Pret (€/buc.)	
	L	B	D	H	BL		PVC	ALU-PVC
15	150	40	60	100	160	50	25,96	29,68
20	153	46	65	110	165	50	25,96	29,68
25	170	54	80	120	180	30	29,35	33,54
32	185	64	95	140	205	20	33,86	38,70
40	190	74	110	165	210	15	38,38	43,86
50	230	95	140	205	240	10	45,86	52,41
65	270	110	170	250	300	5	51,64	59,01



DN	interior		exterior			buc./ cutie	Pret (€/buc.)	
	L	B	D	H	BL		PVC	ALU-PVC
15	74	40	65	75	90	50	23,70	27,09
20	92	50	75	85	108	50	23,70	27,09
25	116	60	90	105	132	30	27,53	31,45
32	130	78	110	130	150	30	30,06	34,35
40	147	92	130	140	168	20	32,18	36,76
50	190	95	145	165	210	10	37,53	42,89
65	250	110	180	205	280	5	42,89	49,03



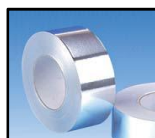
DN	interior		exterior			buc./ cutie	Pret (€/buc.)	
	L	B	D	H	BL		PVC	ALU-PVC
15	100	34	55	52	115	50	20,31	23,23
20	120	44	70	64	135	50	22,16	25,31
25	140	54	85	77	155	30	23,29	26,61
32	150	74	105	98	170	30	25,96	29,68
40	160	84	120	113	180	20	29,06	33,21
50	200	95	145	132	220	10	31,75	36,29
65	250	110	180	160	290	5	37,25	42,58



Forma T : ALU; ALU -PVC



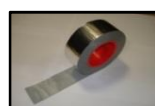
ext. Ø (mm)	Pret (€/buc.)		ext. Ø (mm)	Pret (€/buc.)		ext. Ø (mm)	Pret (€/buc.)	
	PVC	ALU-PVC		PVC	ALU-PVC		PVC	ALU-PVC
52	1,76	4,32	108	3,13	12,35	169	10,26	44,10
57	1,82	4,74	116	3,36	13,94	176	11,50	46,75
61	1,90	5,07	120	3,47	14,38	182	11,50	47,46
67	1,92	5,64	128	4,67	15,88	189	11,50	47,81
73	1,95	6,13	130	4,80	15,88	194	11,50	48,69
82	2,19	6,77	136	4,98	19,94	214	11,50	50,99
88	2,32	8,85	140	5,12	20,29	245	12,39	53,26
93	2,67	10,77	149	5,51	21,17	268	17,81	60,33
100	2,88	11,64	156	5,67	31,75	300	23,37	67,12
102	2,95	11,79	160	8,59	37,04			



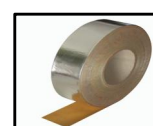
Banda adezivata ALU		
Dimensiune	buc./carton	Preț (€/buc.)
50 mm x 50 m	24	3,78
75 mm x 50 m	16	5,66
100 mm x 50 m	12	7,56
50 mm x 100 m	24	7,56
75 mm x 100 m	16	11,32
100 mm x 100 m	12	15,12



Banda adezivata poliester suflata cu aluminiu		
Dimensiune	buc./carton	Preț (€/buc.)
50 mm x 100 m	54	3,65
75 mm x 100 m	36	5,18
100 mm x 100 m	27	7,10



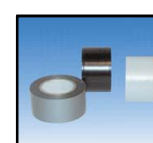
Banda Butyl - Alu Gerband 606		
Dimensiune	buc./carton	Preț (€/buc.)
50 mm x 10 m	12	15,61
75 mm x 10 m	8	23,39
100 mm x 10 m	6	31,19



Banda adezivata Protect Isogenotec	
Dimensiune	Preț (€/buc.)
50 mm x 50 m	27,50
75 mm x 50 m	41,28



Banda adezivata ALU-NET ranforsata cu fibra de sticla		
Dimensiune	buc./carton	Preț (€/buc.)
50 mm x 50 m	24	5,42
75 mm x 50 m	16	7,96



Banda adeziva PVC gri		
Dimensiune	buc./carton	Preț (€/buc.)
30 mm x 10 m	22	3,24
30 mm x 25 m	22	6,51
50 mm x 10 m	14	4,84
50 mm x 25 m	14	10,72



Manseta - 10m / Rol.			
ISO / mm	buc./carton	Preț (€/buc.)	
		ALU-met.	PVC-gri
20	5	7,22	8,13
25	5	8,13	9,23
30	5	8,13	9,23
40	5	11,14	12,79
50	5	12,61	15,25
60	5	14,52	16,88
70	5	16,90	19,45
80	5	19,18	20,96
90	5	21,65	21,61
100	5	24,39	23,86



Nituri PVC gri sau alb		
Descriere	buc./punga	Preț (€/punga)
Nituri PVC	1.000	7,35
Unealta Nituri PVC - DUO	1	7,89



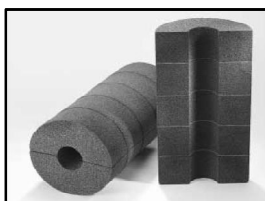
Unelte	
Descriere	Preț (€/buc.)
Masa - Folie PVC -1m	490,34
Foarfece PVC 860-225	29,04
Stanley cutter - robust 18mm	11,12
Lama robust Stanley - 10 buc./cutie	5,37



Adeziv - PVC		
Descriere	buc./carton	Preț (€/buc.)
1000 ml - UN 1993 3 II	12	24,96



Nituri Alupak		
Descriere	buc./punga	Preț (€/punga)
Nituri Alupak	1.000	42,91
Unealta Nituri Alupak	1	38,88



Material:

Sticla cu continut ridicat de Sticla Reciclata

Domeniul temperaturii de utilizare:

-260 °C pana +430 °C

Coefficient de permeabilitate la vapori:

$\mu = \infty$

Densitate:

120 kg/m³

Coefficient de conductibilitate termică:

$\lambda_{10}^{\circ}\text{C} = 0,041 \text{ W}/(\text{m}^*\text{K})$

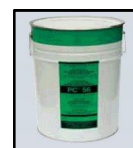


Lungime Cochilii:

600 mm

FOAMGLAS ONE - Cochilii / Coturi 90°

Dimensiune tevi			Grosimile de izolare	Pret		Grosimile de izolare	Pret	
ext. Ø (mm)	Inch	DN (mm)		Cochilii (€/m)	Coturi 90° (€/buc.)		Cochilii (€/m)	Coturi 90° (€/buc.)
12,0			25	4,79		30	6,79	
13,5	1/4	8	25	4,79		30	6,79	
15,0			25	4,79		30	6,81	
17,2	3/8	10	25	5,37		30	6,81	
18,0			25	5,37		30	6,81	
21,3	1/2	15	25	6,03	3,61	30	8,75	5,40
22,0			25	6,03	3,61	30	8,75	5,40
26,9	3/4	20	25	7,59	3,77	30	8,77	6,16
28,0			25	6,08	3,77	30	8,77	6,16
33,7	1	25	25	8,77	5,35	30	10,69	6,86
35,0			25	8,77	5,35	30	10,69	6,86
42,4	1 1/4	32	25	9,64	6,34	30	14,17	7,94
48,3	1 1/2	40	25	11,73	7,15	30	14,24	7,94
54,0			25	14,20	7,94	30	15,38	8,10
60,3	2	50	25	15,43	8,10	30	23,50	14,51
64,0			25	15,43	8,10	30	23,50	14,51
76,1	2 1/2	65	25	23,50	14,67	30	25,28	14,82
88,9	3	80	25	25,28	14,95	30	27,08	16,76
108,0			25	27,00	29,41	30	29,15	30,53
110,0		100				50	53,22	
114,3	4	100	25	28,66	25,20	30	31,71	31,50
135,0		125				50	70,95	
139,7	5	125	30	41,59	46,30	40	55,79	56,08
160,0		150				50	70,95	
168,3	6	150	30	55,79	46,30	40	57,25	56,10
219,1	8	200	40	57,25	89,46	50	78,29	91,62
273,0	10	250	40	63,85	115,66	50	95,20	133,28
323,9	12	300	40	74,96	162,85	50	95,20	169,56
355,6	14	350	40	89,94	169,56	50	114,45	218,40



Adeziv	Preț
PC 18 - 310 ml Cartus	5,09 €/buc.
PC 56 - 28 kg/galeata	4,04 €/kg
PC 60 - 10 kg/galeata	11,85 €/kg
PITSEAL 444 - 310 ml Cartus	5,96 €/buc.

FOAMGLAS ONE - Placi



Grosime (mm)	Lungime x Latime (mm x mm)	Preț (€/m ²)
50	600 x 450	38,92
60	600 x 450	46,72
70	600 x 450	54,55
80	600 x 450	62,30



FIBERFRAX - Durablanket S



Material:

Fibra ceramica

Domeniul temperaturii de utilizare:

pana +1.250 °C

Temperatura de topire:

1.760 °C

Densitate:

96 kg/m³

Coefficient de conductibilitate termică:

$\lambda_{600^{\circ}\text{C}} = 0,14 \text{ W}/(\text{m}^{\circ}\text{K})$

$\lambda_{800^{\circ}\text{C}} = 0,22 \text{ W}/(\text{m}^{\circ}\text{K})$

$\lambda_{1.000^{\circ}\text{C}} = 0,36 \text{ W}/(\text{m}^{\circ}\text{K})$

Culoare:

alb

Durablanket S				
Grosime (mm)	Lungime (mm)	Latime (mm)	m ² /carton	Pret (€/m ²)
13	14.640	610	8,93	10,06
19	10.000	610	6,10	14,61
25	7.320	610	4,47	19,34
38	5.000	610	3,05	29,20
50	3.660	610	2,23	38,68

Densitate: 128 kg/m³

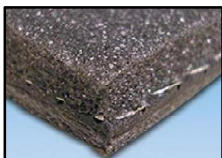
Preturi la cerere



Banda - Fibra de sticla				
Tip	Latime	Grosime	Lungime	Pret (€/buc.)
non- adeziv	30 mm	2 mm	50 m	74,42
	50 mm	2 mm	50 m	97,27
adeziv	30 mm	2 mm	50 m	196,96
	40 mm	2 mm	50 m	213,23



KISOFON - FR AL 203



Material:
Toate cele trei straturi lipite impreuna

- 2 mm Polyethylena
- 2 mm Mappysilent FR AL
- 10 mm Spuma Polyuretana

Domeniul temperaturii de utilizare:
Coeficient de conductibilitate termică:
Culoare:

-80 °C pana +100 °C
 $\lambda_{-10}^{\circ\text{C}} = 0,034 \text{ W}/(\text{m}^{\circ\text{K}})$ / $\lambda_{40}^{\circ\text{C}} = 0,039 \text{ W}/(\text{m}^{\circ\text{K}})$
antracit

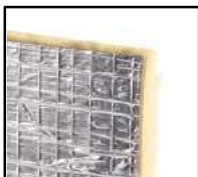
Folosit pentru:

Constructie de masini si utilaje.
Izolatii termice ptr. tevi de scurgere
Izolatii fonice ptr. tevi si cazane

Tip	Grosime	kg/m ²	Lungime x Latime	m ² /carton	m ² /Pal.	Pret (€/m ²)
KISOFON FR AL 203	14 mm	4,36	2,0 m x 1,0 m	2 m ²	80 m ²	54,83

Toleranta la grosime: ± 10 %

TECSOUND - FT 55



Material:
Straturi lipite impreuna

- 2 mm Strat Tecsound - 2,0 g/cm³
- 10 mm Vata Minerala

Coeficient de conductibilitate termică:

$\lambda_D = 0,037 \text{ W}/(\text{m}^{\circ\text{K}})$

Folosit pentru:

Izolatii termice si fonice ptr. tevi de scurgere si canale
ptr. aer conditionat.

Tip	Grosime	kg/m ²	Lungime x Latime	m ² /carton	m ² /Pal.	Pret (€/m ²)
Tecsound FT 55	12,5 mm	5,6	5,5 m x 1,2 m	6,6	52,8	21,90
Tecsound FT 55 ALU	12,6 mm	5,5	5,5 m x 1,2 m	6,6	66,0	35,71

ISOVER - AF



Material:

Saltele din vata minerala de sticla rulate, hidrofozate,
caserate cu impaslitura din fibrade sticla de culoare neagra,
pentru imbunatatirea coeficientului de absorbtie fonica.

Coeficient de conductibilitate termică:

$\lambda_D = 0,038 \text{ W}/(\text{m}^{\circ\text{K}})$

Categoria de inflamabilitate:

Euroclasa: A1

Grosime (mm)	Tip	Lungime x Latime (mm x mm)	m ² / ambalaj	Pret (€/m ²)
20	AF 20	2 x 12.000 x 1.200	28,80	6,57
30	AF 30	2 x 10.000 x 1.200	24,00	7,31
40	AF 40	2 x 7.000 x 1.200	16,80	8,03
50	AF 50	12.000 x 1.200	14,40	9,45
60	AF 60	10.000 x 1.200	12,00	10,81
80	AF 80	7.000 x 1.200	8,40	13,61

Sisteme de conducte preizolate

Material: Conducte preizolate cu spuma PE, protejat cu camasa PE-HD striata.



Diametru la conducte simple: \varnothing 25 pana \varnothing 110 mm
 Diametru la conducte duble: \varnothing 25 pana \varnothing 63 mm
 Domeniul temperaturii de utilizare: -15 °C pana +95 °C
 Coeficient de conductibilitate termică la izolatie: $\lambda_{50}^{\circ}\text{C} = 0,031 \text{ W}/(\text{m}^{\circ}\text{K})$
 Camasa exterioara: PE-HD tuburi, striata, impermeabila



Versiune:

Codul produsului	Diametru nominal (DN)	Diametru nominal (Inci)	Diametrul exterior al cămășii exterioare (mm)	Conducta purtătoare **		Grosime perete S (mm)	Numărul de conducte purtătoare	Raza minimă de curbă (m)	Lungimea standard a colacului (m)	Masa liniară (kg/m)
				Diametru exterior (mm)	Diametru interior (mm)					
VS-R_125A2/25	20	¾	125	25	20,4	2,3	2	0,60	150	1,40
VS-R_125A2/32	25	1	125	32	26,0	3,0	2	0,60	150	1,60
VS-R_160A2/40	32	1¼	160	40	32,6	3,7	2	0,80	100	2,50
VS-R_160A2/50	40	1½	160	50	40,8	4,6	2	0,80	100	3,00
VS-R_200A2/63	50	2	200	63	51,4	5,8	2	1,25	50	4,25
VS-R_90A25	20	¾	90	25	20,4	2,3	1	0,40	200	0,75
VS-R_90A32	25	1	90	32	26,0	3,0	1	0,40	200	0,85
VS-R_90A40	32	1¼	90	40	32,6	3,7	1	0,50	200	1,00
VS-R_125A50	40	1½	125	50	40,8	4,6	1	0,70	150	1,75
VS-R_125A63	50	2	125	63	51,4	5,8	1	0,80	150	2,05
VS-R_160A75	65	2½	160	75	61,2	6,9	1	0,80	100	3,05
VS-R_160A90	80	3	160	90	73,6	8,2	1	1,00	100	3,60
VS-R200A110	100	4	200	110	90,0	10,0	1	1,25	50	5,00

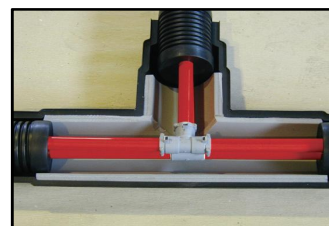
*) Se poate livra orice lungime mai mică decât lungimile maxime rotunjite la metru.

**) Dimensiunile pentru conductele de PB sunt la presiunea de 8 bar la 95 °C.

Temperatura/Presiunea nominală a conductelor purtătoare PB:

Temperatura de lucru	-15 °C	0 °C	20 °C	40 °C	60 °C	70 °C	80 °C	95 °C
Presiunea de lucru (bar)	16	16	16	15	12	10	9	8
Presiunea de lucru (PSI)	232	232	232	218	174	145	131	116

Preturi la cerere



Austroflex Sistem-Rola (ALU)

Sistem de izolatii roluit pentru montaj tevi de incalzire prin pardoseala.



Material: Polistiren fonic absorbant, laminat cu folie din fibra de sticla aluminizata.
Folia are marcaj de 5cm pentru o prindere corecta si rapida a tevii iar fibra de sticla nu permite iesirea carligului.
Folia este prelungita pe o latura 4cm auto-adeziv pentru imbinare.

Coefficient de conductibilitate termică: $\lambda_D = 0,041 \text{ W/(m}^*\text{K)}$ • Sistem-Rola Standard
 $\lambda_D = 0,032 \text{ W/(m}^*\text{K)}$ • **Sistem-Rola PLUS**

Resistenta la compresiune: 3,5 kN/m² • Sistem-Rola Standard
6,5 kN/m² • Sistem-Rola PLUS

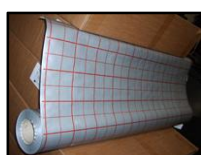
Categoria de inflamabilitate: Euroclasa E - EN 13501

TYP	Latime (mm)	m ² / ambalaj	Pret (€/m ²)	
			Standard	PLUS
22 / 20	1.000	10,0	7,59	9,87
27 / 25	1.000	10,0	8,29	10,78
33 / 30	1.000	10,0	8,98	11,67
38 / 35	1.000	10,0	10,02	13,03



Accesorii		
Descriere	buc./punga	Preț (€/punga)
Carlige Plastic	1.500	157,25
Capsator - Sistem Rola	1	262,10

ptr. Tevi ø14 - 18 mm



Folie din fibre de sticlă laminata cu folie de aluminiu.			
Latime	Lungime	m ² /rola	Pret (€/m ²)
1.040 mm	100 m	104	3,06