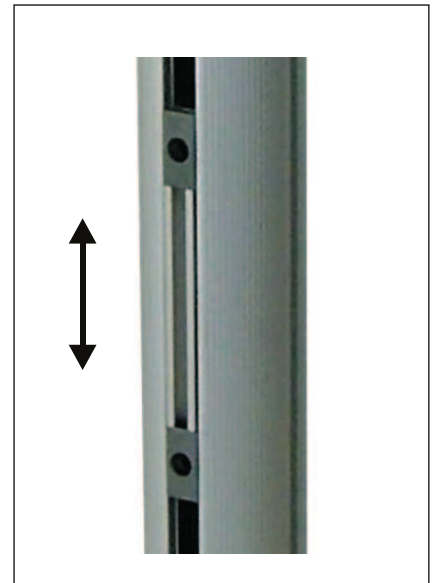


## Slideway lifter I 67 Koax

IK 67XYYYZZZAAA24



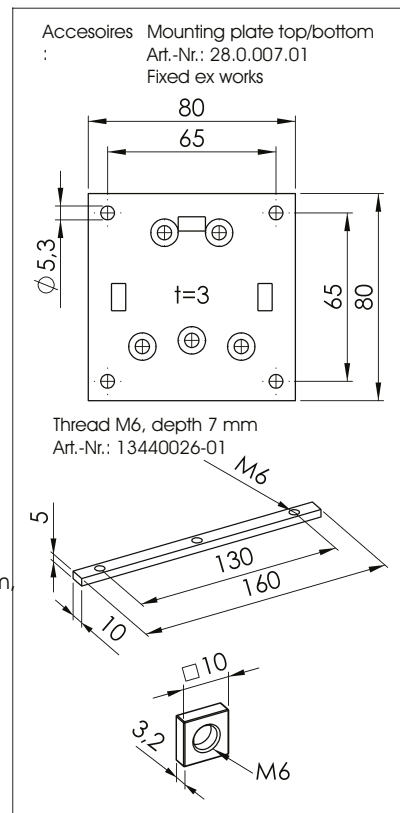
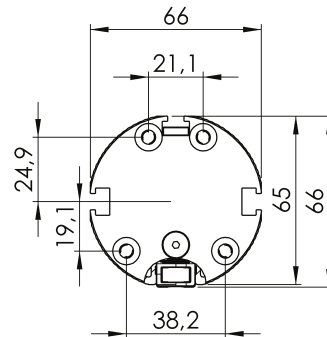
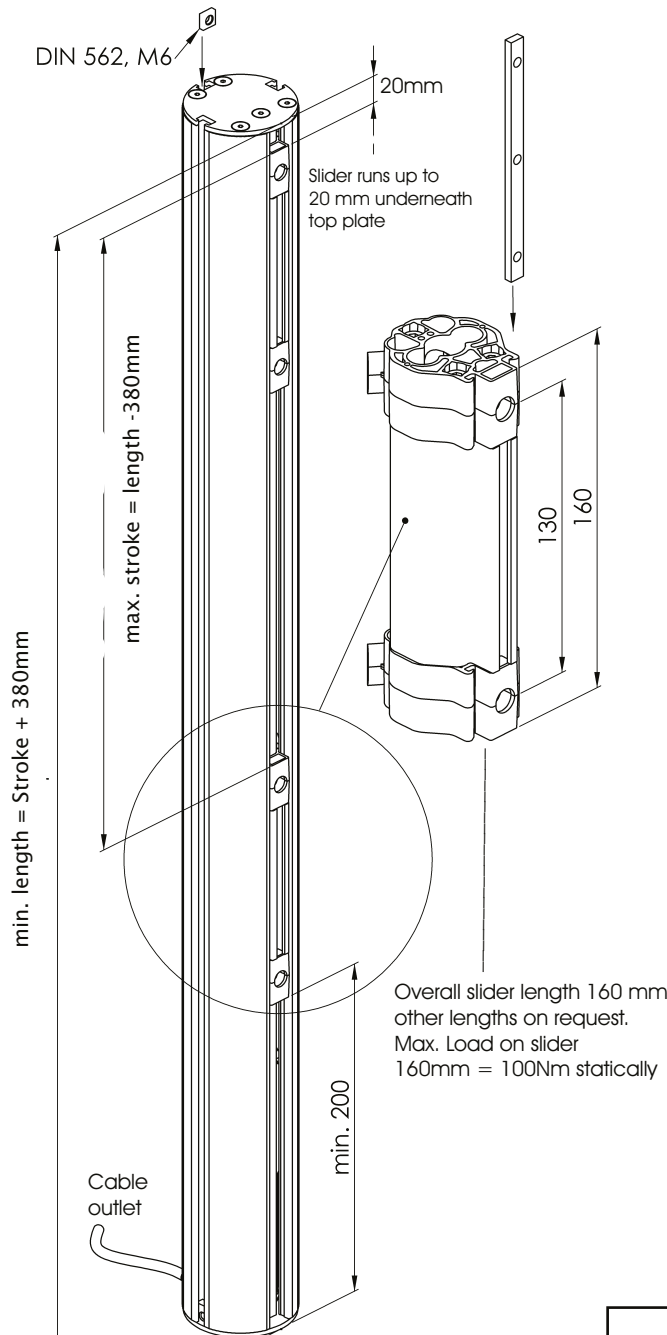
### I-67Koax

Slideway lifter unit with fully concealed DC actuator drive. Suitable for single or dual lifter geometry, also in combination with telescopic lifters for elevating secondary shelf for screen units etc.

# Slideway lifter I 67 Koax

IK 67XYYYZZZAAA24

Maximum length 2.000mm



Force [N] at 24V (pushing)	Tr12 x 3	1000
	Tr12 x 6*	800
	Tr12 x 12*	600
	Tr12 x 16*	400
Speed [mm/s] at 24V without load	Tr12 x 3	8
	Tr12 x 6*	15
	Tr12 x 12*	25
	Tr12 x 16*	35
* no self-locking, integrated brake system in push direction Stroke tolerance depends on load, voltage and spindle size!		

<b>Slideway lifter</b>	I 67 Koax
Duty rating	10% (S3)
Insulation class	E
Enclosure rating	IP42
Cable connection	2,5m; 8-pin plug
Voltage [V]	12...36
Current consumption [A]	1,5...8,0
Motor rating[W]	30...80
Maximum power [W]	< 200
Gear ratio	1 : 35
Pulse transmitter	Encoder: 2 pulse / rotor revolution
Limit switches	2 x integrated