

## Roller U-rails – Mini / Normal

The rollers mounted on steel axles have a **load-carrying capacity of 6 kg** and are available as normal and flanged rollers. The roller track profile is bright galvanized steel sheet. Stainless steel design on request. Available in lengths up to max. 6000 mm.

Stock lengths immediately available		Length	Design
Ident. No.	Order No.	mm	
0023598	RU-16N-MINIX2000	2000	yellow
0026685	RU-16N-MINIX3000	3000	yellow

### Roller U-rail – Mini

Order No. with normal rollers	
RU-16N-Mini x Lenght	
RU-33N-Mini x Lenght	
RU-50N-Mini x Lenght	
RU-33SP-Mini x Lenght	
RU-50SP-Mini x Lenght	
RU-66SP-Mini x Lenght	

Stock lengths immediately available		Length	Design
Ident. No.	Order No.	mm	
0023611	RU-33Nx2000	2000	yellow
0023613	RU-33Nx3000	3000	yellow

### Roller U-rails – Normal

Order No. with normal rollers	
RU-33N x Lenght	
RU-50N x Lenght	
RU-66N x Lenght	
RU-100N x Lenght	
RU-50SP x Lenght	
RU-66SP x Lenght	
RU-100SP x Lenght	

### Mini – Normal accessories

Ident. No.	Order No.
0026914	End stop RU-EG
0026915	Connector RU-V
0026916	Spring steel brake plate RU-BB
0026917	Brake clip RU-BK
0026918	Adjustable spring clip RU-VFKL
0026919	Edge protection RU-KS
0026920	Safety strut RU-SPS

## Roller U-rail – Superfix

For transporting heavy goods in rough daily operation. The rollers mounted on steel axles have a **load-carrying capacity of 12 kg** and are available as normal and flanged rollers.

### Roller U-rail – Superfix

Order No. with Superfix rollers	
SF-33N x Lenght	
SF-50N x Lenght	
SF-66N x Lenght	
SF-100N x Lenght	
SF-50SP x Lenght	
SF-66SP x Lenght	
SF-100SP x Lenght	

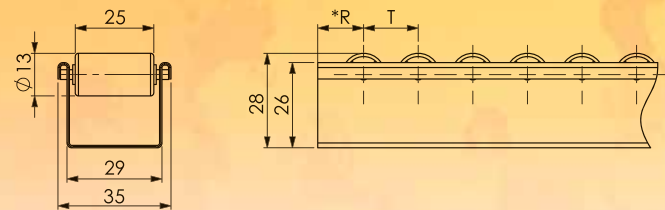
Stock lengths immediately available		Length	Design
Ident. No.	Order No.	mm	
0010896	SF-33Nx2000	2000	yellow
0010897	SF-33Nx3000	3000	yellow

### Superfix accessories

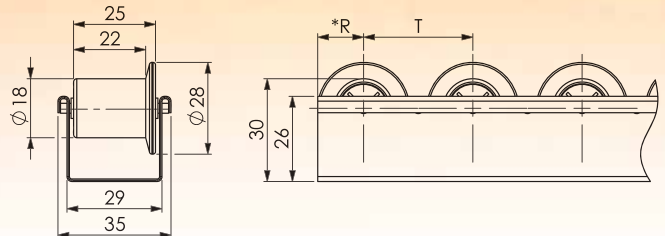
Ident. No.	Order No.
0026921	End stop SF-E
0026922	Sliding end stop SF-SE
0026923	Connector SF-V

### Röllchen U-Leisten - Mini

Mini-Röllchen mit T= 16,667; 33,334; 50

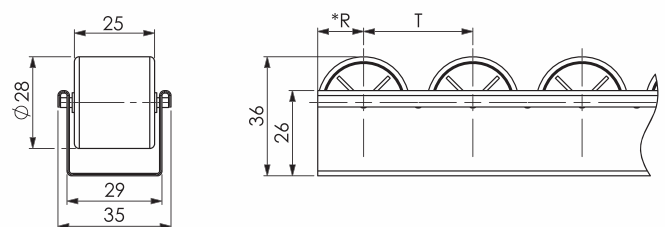


Minispurkranz-Röllchen mit T= 33,334; 50; 66,667; 83,334

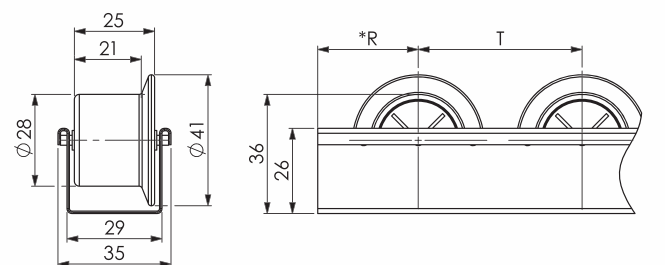


### Röllchen U-Leisten - Normal

Normal-Röllchen mit T= 33,334; 50; 66,667; 83,334; 100

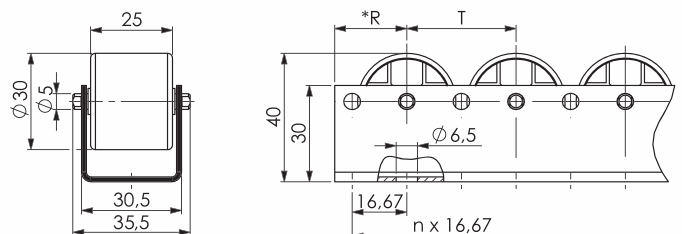


Normalspurkranz-Röllchen mit T= 50; 66,667; 83,334; 100

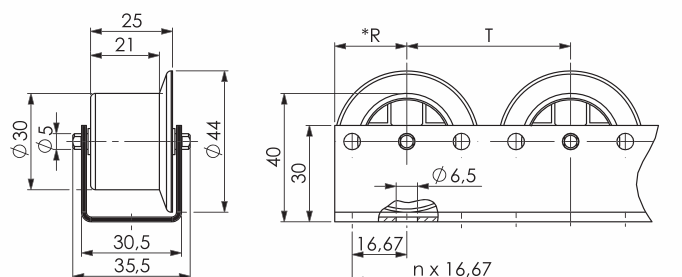


### Röllchen U-Leisten - Superfix

Superfix-Röllchen mit T= 33,334; 50; 66,667; 83,334; 100



Superfixspurkranz-Röllchen mit T= 50; 66,667; 83,334; 100



\*R= definierter Röllchenabstand auf Anfrage (Sonderschnitt)