

### 3 ► GAS TECHNOLOGY ON WOOD





Eurocode 5 is the European timber construction code. It is mandatory since March 2010. EC5 is used by architects and building construction design engineers. Paslode nails meet all corrosion requirements stated in EC5 and are available in 3 different classes.

#### EUROCODE 5 Service Class Specifications

Indoors



Indoors Not Heated,  
Outdoors Protected



Outdoors, Exposed  
To Weather



#### Nails with a diameter of 4mm and below Corrosion protection criteria as EUROCODE 5

1) Bright  
2) Electro-galvanised  
<12µm

1) Electro-galvanized  
≥ 12µm zinc +  
chromate  
2) Hot Dip Galvanized  
(HDG) 39µm zinc

1) Electro-galvanized  
25µm zinc + chromate  
2) Hot Dip Galvanized  
(HDG) 49µm zinc  
3) Stainless Steel

#### PASLODE Nail Range

STANDARD

ELECTRO-GALVANIZED

GALV (12 µm) or GALV-PLUS (15 and 20 µm) Zinc/Aluminium

HDG - Hot Dip Galvanized 50 to 80µm Zinc

Stainless steel (Meeting the requirements of AISI 304 or 316)

**Gas Positive Placement Nailer for Connectors** | 21

PPN50C<sub>i</sub>

**Gas Framing Nailer** | 22

IM90C<sub>i</sub> - IM350+

**Gas Haften Nailer** | 25

IM45GN

**Gas Roofing Nailer** | 26

IM45CW

**Gas Stapler** | 26

IM200/50 S16














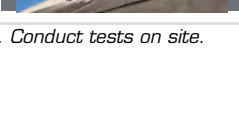
**Gas Finish Nailer** | 27

IM50 F18 Li - IM65 F16 Li

IM65A F16 Li

Since the 1st of July 2013, under the Construction Products Regulation (RPC), it became mandatory for manufacturers to CE marking to declare the performance of their products (DoP). These declarations can be downloaded on [www.itwcpstechdoc.eu](http://www.itwcpstechdoc.eu). The DoP numbers are indicated on the Paslode nail packs.

## NAIL SELECTION GUIDE FOR FRAME NAILING

		GALVA <12 µm	STANDARD CLASS 1	GALVA ≥12 µm CLASS 2	HOT DIP GALVA CLASS 3	STAINLESS STEEL CLASS 3	EUROCODE 5	Number of nails for 100 m <sup>2</sup>
PPN50Ci				●			Since MARCH 2010	<b>Hard n'Safe™ ring</b> 35,40,50 300 to 600
				●			Since MARCH 2010	<b>Hard n'Safe™ ring</b> 35,40,50 300 to 600
IM90Ci		●		●			Since MARCH 2010	<b>Ring shank</b> 51 and 70 <b>Smooth shank</b> 63 and 70 <b>NailScrew®</b> 50, 65 and 75 500 to 1200
		●		●			Since MARCH 2010	<b>Ring shank</b> 63 and 70 400 to 900
		●		●			Since MARCH 2010	<b>Ring shank and smooth shank</b> 63, 70 and 90* 1000 to 2000
				●			Since MARCH 2010	<b>Ring shank</b> 51 and 63 <b>Smooth shank</b> 63 and 70 500 to 1000
		●		●			Since MARCH 2010	<b>Ring shank and smooth shank</b> 51, 63, 70, 75, 80 and 90* 2000 to 2500
		●		●	●		Since MARCH 2010	<b>Ring shank</b> 51 and 63 <b>Smooth shank</b> 63 and 70 3500 to 5500
				●	●		Since MARCH 2010	<b>Ring shank</b> 75 and 90* 200 to 500
				●	●		Since MARCH 2010	<b>Ring shank</b> 51, 63 and 75 200 to 800
					●	●	Since MARCH 2010	<b>Ring shank</b> 51, 55, 63, 70 and 90 <b>NailScrew®</b> 50, 65 and 75 2000 to 4000
					●	●	Since MARCH 2010	<b>Ring shank</b> 51 2500
IM45 GN					●	●	Since MARCH 2010	<b>Ring shank</b> 50 specifically made for steel tiles 1800 to 2500
					●	●	Since MARCH 2010	<b>Ring shank</b> 25 and 32 2000
IM45 CW		●			●	●		<b>Ring shank</b> 25 <b>Smooth shank</b> 22, 25 and 35 1000 to 2000

\* Depending on wood types. Conduct tests on site.



## IMPULSE PPN50Ci

**CORDLESS POSITIVE PLACEMENT NAILER FOR CONNECTORS TO WOOD FIXING WITH 35-40-50MM HARDENED RING NAILS**

### FEATURES AND BENEFITS

- Recognised as the easiest system for locating the pilot hole, saving you both time and money, resulting in a faster and better finish.
- Reduced risk of misfiring or flying nails due to increased quality resulting in improved safety.
- Start & Go: no battery discharge when not in use. Provides up to 25% more shots per charge than other Lithium tools.

### APPLICATIONS

- Joist hangers
- Reinforced angle brackets
- Nail plate angle brackets
- Nail plates
- Wind braces
- Ties
- Straps

### TECHNICAL DATA

Power:	95 J
Product weight with battery:	4,00 kg
Dimension:	384 x 328 x 127 mm
Maximum Cycle rate per sec:	2-3
Maximum Cycle rate per hour:	1000
Maximum Cycle Rate Per Day:	3300
Fastener length range:	35-40-50 mm
Magazine capacity:	27
Battery type:	Lithium
Battery charge time:	60 min
Fixings per battery charge:	7500
Operating temperature range:	-15°C...+49°C
Workplace Relevant Emission, LpA:	95 dB(A)
LpCpeak (EN 12549):	134 dB(C)
Vibrations 3 axes (EN ISO 8662-11) ahv:	4,2 m/s <sup>2</sup>

### TOOLS

Code	Description
014115	PASLODE NAILER PPN50CI EU

### CONSUMABLES

Code	Description	Service class	Gty. Fuel Cells	Quantity
141186	NAIL PACK 4,0X35 RING HGALV	2	1	1250
141187	NAIL H-PACK 4,0X40 RING HGALV	2	1	1250
141188	NAIL H-PACK 4,0X50 RING HGALV	2	1	1250

### ACCESSORIES

Code	Description	Packaging	Quantity
018880	PASLODE LITHIUM BATTERY	Unit	1
018881	PASLODE LITHIUM CHARGER EU	Unit	1
300348	FUEL CELL BLISTER FOR SERIES-I (1 X FC)	Unit	1
014099	PROBE KIT FOR PPN SERIES-I	Unit	1
014111	STANDARD MAGAZINE FOR PPN50I - PPN50CI	Unit	1
013690	IMPULSE/PULSA CLEANING KIT	Unit	1
900507	CAR ADAPTER	Unit	1
115251	IMPULSE / PULSA CLEANER 300ML	Unit	1



018880



018881



300348

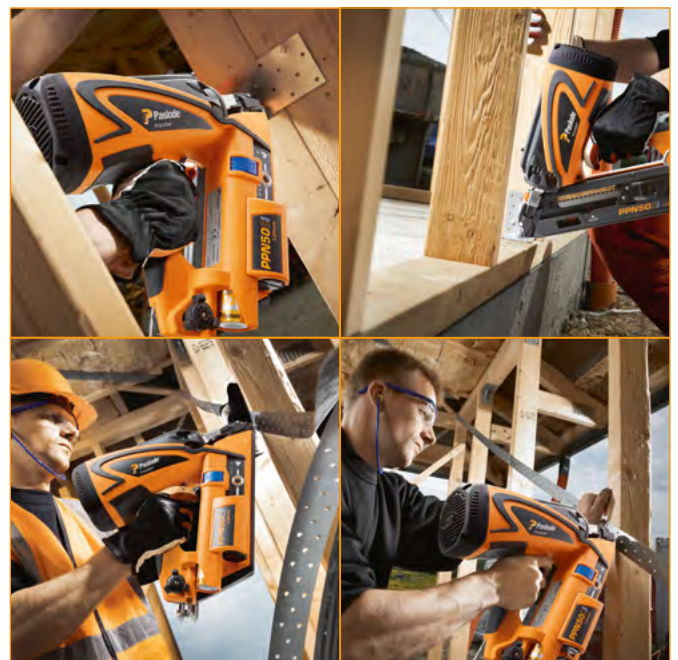


014111



### CONTENT OF THE CARRYING CASE

- Positive Placement Nailer
- High quality tool box
- Lithium battery
- Lithium battery charger
- Safety glasses to EN166:F
- Allen key
- Instruction manual
- Expanded view and parts list
- Safety instructions
- CE Declaration of Conformity



## IM90Ci CORDLESS FRAMING NAILER WITH 105 JOULES POWER

### FEATURES AND BENEFITS

- Start & Go : no battery discharge when not in use. Provides up to 25% more shots per charge than other Lithium tools
- Easy and fast control of your battery and fuel cell levels means you will never be caught without power on site, as the tool warns you where you are down to your last 300 shots
- Quick Charge, Long Life Lithium Battery
- Provides up to 7,500 shots per full charge (1 hour); 6,000 shots in just 30 minutes; 200 shots in just 2 minutes even on the move

### APPLICATIONS

- Roof battening
- Trusses assembly / Timber frame
- Cladding
- Stud work
- Roof boarding
- Flat roofing
- Overboarding
- Floor boarding
- Panelling
- Chipboard
- Formwork
- Decking
- Packaging

### TECHNICAL DATA

Power:	105 J
Product weight with battery:	3,80 kg
Dimension:	381 x 328 x 127 mm
Maximum Cycle rate per sec:	2-3
Maximum Cycle rate per hour:	1000
Maximum Cycle Rate Per Day:	4000
Fastener length range:	50 - 90 mm
Magazine capacity:	47
Long Magasin Capacity:	85
Battery type:	Lithium
Battery charge time:	60 min
Fixings per battery charge:	7500
Operating temperature range:	-15°C...+49°C
Workplace Relevant Emission, LpA:	96 dB(A)
LpCpeak (EN 12549):	138 dB(C)
Vibrations 3 axes (EN ISO 8662-11) ahv:	3,9 m/s <sup>2</sup>

### TOOLS

Code	Description
010390	PASLODE NAILER IM90CI EU

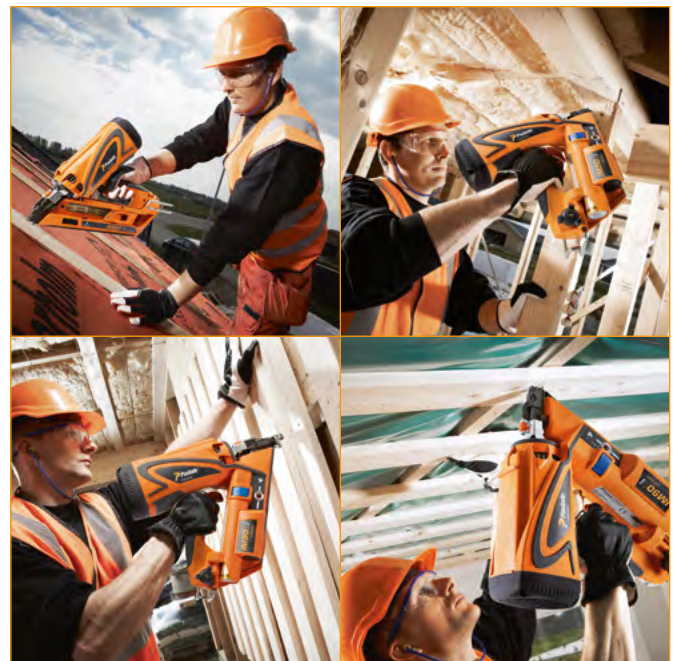
### ACCESSORIES

Code	Description	Packaging	Quantity
018880	PASLODE LITHIUM BATTERY	Unit	1
018881	PASLODE LITHIUM CHARGER EU	Unit	1
013224	STANDARD MAGAZINE IM90I - IM90CI	Unit	1
013225	LONG MAGAZINE IM90I - IM90CI - IM360CI	Unit	1
013256	CLADDING PROBE - RUBBER KIT FOR SERIES-I	Unit	1
013211	NO-MAR CLADDING PROBE FOR SERIES-I	Unit	1
013223	STEEL TILE PROBE FOR SERIES-I	Unit	1
013221	TONGUE & GROOVE PROBE FOR SERIES-I	Unit	1
300348	FUEL CELL BLISTER FOR SERIES-I (1 X FC)	Unit	1
013690	IMPULSE/PULSA CLEANING KIT	Unit	1
900507	CAR ADAPTER	Unit	1
115251	IMPULSE / PULSA CLEANER 300ML	Unit	1



### CONTENT OF THE CARRYING CASE

- Framing Nailer
- High quality tool box
- Lithium battery
- Lithium battery charger
- Safety glasses to EN166:F
- Allen key
- Instruction manual
- Expanded view and parts list
- Safety instructions
- CE Declaration of Conformity





## STAND-UP SERIES-i

**WILL MAKE ROOF BOARD NAILING A MORE COMFORTABLE OPERATION**

### FEATURES AND BENEFITS

- Provides greater productivity while nailing from a comfortable upright working position
- Allows long periods of use without tiring
- Saves time by using the long magazine, with double capacity
- Orientable D-shape handle can be 360° changed

### TOOLS

Code	Description
018370	STAND-UP SERIES-i



### CONSUMABLES



**FINISH : STANDARD**  
(SERVICE CLASS 1 - INDOORS)



Code	Description	Service class	Qty. Fuel Cells	Quantity
142010	NAIL F-PACK 2,8X63 SMOOTH BRIG	1	3	3750
142017	NAIL F-PACK 2,8X75 SMOOTH BRIG	1	2	2500
142021	NAIL F-PACK 2,8X80 SMOOTH BRIG	1	2	2500
142035	NAIL F-PACK 3,1X90 SMOOTH BRIG	1	2	2500
142005	NAIL F-PACK 2,8X51 RING BRIG	1	3	3750
142011	NAIL F-PACK 2,8X63 RING BRIG	1	3	3750
142016	NAIL F-PACK 2,8X70 RING BRIG ROUN 6,5 DIA	1	2	2500
142018	NAIL F-PACK 2,8X75 RING BRIG ROUN 6,5 DIA	1	2	2500
142029	NAIL F-PACK 3,1X75 RING BRIG	1	2	2500
142036	NAIL F-PACK 3,1X90 RING BRIG	1	2	2500
142070	NAIL F-PACK 3,1X90 UNIL BRIG	1	2	2500



**FINISH : INOX A2**  
(SERVICE CLASS 3 - OUTDOORS, EXPOSED TO WEATHER)

Code	Description	Service class	Qty. Fuel Cells	Quantity
142045	NAIL H-PACK 2,8X51 RING A2	3	1	1250
142047	NAIL H-PACK 2,8X63 RING A2	3	1	1250
142053	NAIL H-PACK 3,1X90 RING A2	3	1	1250
142080	NAIL H-PACK 2,8X55 RING A2	3	1	1250
142048	NAIL H-PACK 2,8X70 RING A2	3	1	1250



**FINISH : GALV-PLUS®**  
(SERVICE CLASS 2 - INDOORS NOT HEATED, OUTDOOR PROTECTED).

Code	Description	Service class	Qty. Fuel Cells	Quantity
142037	NAIL F-PACK 3,1X90 SMOOTH GALV+	2	2	2500
142007	NAIL F-PACK 2,8X51 RING GALV+	2	3	3750
142013	NAIL F-PACK 2,8X63 RING GALV+	2	3	3750
142019	NAIL F-PACK 2,8X75 RING GALV+	2	2	2500
142024	NAIL F-PACK 3,1X63 RING GALV+	2	2	2500
142030	NAIL F-PACK 3,1X75 RING GALV+	2	2	2500
142052	NAIL F-PACK 3,1X80 RING GALV+	2	2	2500
142038	NAIL F-PACK 3,1X90 RING GALV+	2	2	2500
142072	NAIL F-PACK 3,1X90 UNIL GALV+	2	2	2500



**FINISH : HOT DIP GALVANIZED (HDG)**  
(SERVICE CLASS 3 - OUTDOORS, EXPOSED TO WEATHER)

Code	Description	Service class	Qty. Fuel Cells	Quantity
142008	NAIL F-PACK 2,8X51 RING HDG	3	3	3750
142014	NAIL F-PACK 2,8X63 RING HDG	3	3	3750
142020	NAIL F-PACK 2,8X75 RING HDG	3	2	2500
142040	NAIL F-PACK 3,1X90 RING HDG	3	2	2500
142071	NAIL F-PACK 3,1X90 UNIL HDG	3	2	2500
142000	NFP 2,5 X 50 RING HDG BLACK	3	2	2500
142001	NAIL F-PACK 2,5X50 RING HDGR	3	2	2500

## Packs NailScrew® IM90Ci Unscrew nails



**FINISH : ELECTRO GALVANIZED 12µm**  
(SERVICE CLASS 2)

Code	Description	Service class	Qty. Fuel Cells	Quantity
142100	NAIL F-PACK 2,8/3,2X50 SCREW GALVPLUS	2	1	1250
142102	NAIL F-PACK 2,8/3,2X65 SCREW GALVPLUS	2	1	1250
142104	NAIL F-PACK 2,8/3,2X75 SCREW GALVPLUS	2	1	1250



**FINISH : STAINLESS STEEL A2 (SERVICE CLASS 3).**

Code	Description	Service class	Qty. Fuel Cells	Quantity
142101	NAIL F-PACK 2,8/3,2X50SCREW A2	3	1	1250
142103	NAIL F-PACK 2,8/3,2X65SCREW A2	3	1	1250
142105	NAIL F-PACK 2,8/3,2X75SCREW A2	3	1	1250

## IM350+

### CORDLESS FRAMING NAILER

#### FEATURES AND BENEFITS

- Aggressive styling ribs offer significantly improved protection to the internal components
- Long lasting steel seal ring provides greater reliability
- Reduced actuation force combined with skew nailing helps get the job done faster and easier
- Performance increased at low temperature: 75% to 0°C

#### APPLICATIONS

- Studwork
- Joist nailing
- Flat roofing
- Wind bracing
- Roof battening
- Tile battening
- Flooring

#### TECHNICAL DATA

Power:	82 J
Product weight with battery:	3,40 kg
Dimension:	370 x 110 x 305 mm
Maximum Cycle rate per sec:	2-3
Maximum Cycle rate per hour:	1000
Maximum Cycle Rate Per Day:	4000
Fastener length range:	50-90 mm
Magazine capacity:	55
Battery type:	NiCd
Battery charge time:	120 min
Fixings per battery charge:	4000
Operating temperature range:	0°C...+49°C
Workplace Relevant Emission, LpA:	89 dB(A)
LpCpeak:	< 130 dB(C)
Vibrations 3 axes (EN ISO 8662-11) ahv:	2,6 m/s <sup>2</sup>

#### TOOLS

Code	Description
014800	IM350+ EUR FRAMING NAILER

#### CONSUMABLES

Code	Description	Service class	Qty. Fuel Cells	Quantity
141212	NAIL F-PACK 2,8X70 SMOOT BRIG CLIP 7,3 DIA	1	2	2200
141214	NAIL F-PACK 2,8X75 SMOOT BRIG CLIP 7,3 DIA	1	2	2200
141218	NFP 2,8 X 80 SMOOTH BRIGHT	1	2	2200
141233	NAIL F-PACK 3,1X90 SMOOTH BRIG	1	2	2200
141202	NAIL F-PACK 2,8X51 RING BRIG CLIP 7,3 DIA	1	3	3300
141208	NAIL F-PACK 2,8X63 RING BRIG CLIP 7,3 DIA	1	3	3300
141213	NFP 2,8 X 70 RING BRIGHT	1	2	2200
141215	NAIL F-PACK 2,8X75 RING BRIG CLIP 7,3 DIA	1	2	2200
141226	NFP 3,1 X 75 RING BRIGHT	1	2	2200
141204	NAIL F-PACK 2,8X51 RING GALV+	2	3	3300
141210	NAIL F-PACK 2,8X63 RING GALV+	2	3	3300
141227	NAIL F-PACK 3,1X75 RING GALV+	2	2	2200
141200	NAIL F-PACK 2,5X50 RING HDG BLACK	3	2	2200
141257	NAIL H-PACK 2,8X51 RING A2	3	1	1100
141261	NAIL H-PACK 2,8X63 RING A2	3	1	1100
141253	NAIL H-PACK 2,8X55 RING A2 LENS HEAD	3	1	1100

#### ACCESSORIES

Code	Description	Packaging	Quantity
404717	BATTERY IM45/50/65/350+	Unit	1
035460	CHARGER IM45/50/65/350+/PULSA 700/1000	Unit	1
012082	NO-MAR WORK CONTACT ELEMENT FOR IM350 TOOLS	Unit	1
013055	TONGUE & GROOVE PROBE FOR IM350 TOOLS	Unit	1
300346	BLISTER PACK PINK 2 X FC	Unit	1
013690	IMPULSE/PULSA CLEANING KIT	Unit	1
900507	CAR ADAPTER	Unit	1
115251	IMPULSE / PULSA CLEANER 300ML	Unit	1



#### CONTENT OF THE CARRYING CASE

- Framing nailer
- High quality tool box
- High quality tool box
- NiCd battery
- NiCd battery charger
- Safety goggles EN166: F
- Allen key
- User's manual
- Expanded view and parts list
- Safety instruction
- EC Declaration of Conformity



## IMPULSE IM45 GN CORDLESS COIL NAILER FOR HAFTEN APPLICATIONS

### FEATURES AND BENEFITS

- The first cordless coil nailer for metal roof and shingle applications on the market, which is faster and safer than all existing methods with no need for compressors and hoses.
- No small collation particles lying around, which can get under metal roof and damage it in the long term.
- 0° coil sheet collation drives the nail perpendicular, leaving the head flat with no material trapped under it, providing you with the highest quality fixing.
- High Nail Capacity – 125 nails. Increased magazine capacity compared to any strip nailer, work longer without reloading.
- Easily adjustable depth of drive with unique click system to prevent drift during tool use, results in the perfect finish every time.
- Using our patented Last Nail Lock Out system to prevents firing when empty and unnecessary driver blade impact.

### APPLICATIONS

- Metal Clip Fixings
- Flashing
- Edge Protection
- Packaging
- Composite Tiles
- Drywall to Timber
- Hoardings

### TECHNICAL DATA

Power:	30 J
Product weight with battery:	2,87 kg
Dimension:	296 x 135 x 335 mm
Maximum Cycle rate per sec:	2
Maximum Cycle rate per hour:	1000
Maximum Cycle Rate Per Day:	3000
Fastener length range:	25-45 mm
Magazine capacity:	125
Battery type:	NiCd
Battery charge time:	120 min
Fixings per battery charge:	2200
Operating temperature range:	+7°C...+40°C
Workplace Relevant Emission, LpA:	86 dB(A)
LpCpeak (EN 12549):	< 130 dB(C)
Vibrations 3 axes (EN ISO 8662-11) ahv:	2 m/s <sup>2</sup>

### TOOLS

Code	Description
018605	IM45 GN HAFTEN NAILER

### CONSUMABLES

Code	Description	Service class	Qty. Fuel Cells	Quantity
142200	NAIL PACK 2,8X25 RING HDG	3	1	1000
142201	NAIL PACK 2,8X25 RING A2	3	1	1000
142202	NAIL PACK 2,8X32 RING A2	3	1	1000

### ACCESSORIES

Code	Description	Packaging	Quantity
035460	CHARGER IM45/50/65/350+/PULSA 700/1000	Unit	1
404717	BATTERY IM45/50/65/350+	Unit	1
013690	IMPULSE/PULSA CLEANING KIT	Unit	1
900507	CAR ADAPTER	Unit	1
115251	IMPULSE / PULSA CLEANER 300ML	Unit	1
575722	FUEL CELLS BLISTER FOR IM45 CW (2 X FC)	Unit	1
900505	230V-12V ADAPTER CT/P700	Unit	1



900507



575722



### CONTENT OF THE CARRYING CASE

- IM45 GN Coil nailer
- High impact carry case
- 2 batteries
- Battery charger with AC/DC adaptor
- Safety glasses to EN166:F
- Allen key
- Lubricating oil
- Cleaning solution
- Operating manual
- Safety instructions
- CE Declaration of conformity
- Exploded view
- Parts legend



## IMPULSE IM200/32 JDB CONSUMABLES

Code	Description	Service class	Qty. Fuel Cells	Quantity
141177	NAIL H-PACK 2,8X25 RING *SM*	3	2	2000
141156	NAIL H-PACK 2,8X32 RING A2	3	2	2000
141176	NAIL H-PACK 2,8X25 RING A2	3	2	2000

■ Standard ■ Galv-Plus® (> 12 µm) ■ Hot dip galvanized (50 to 80 µm zinc coating) ■ Stainless steel (Meeting the requirements of AISI 304)

### ACCESSORIES

Code	Description	Packaging	Quantity
035460	CHARGER IM45/50/65/350+/PULSA 700/1000	Unit	1
900505	230V-12V ADAPTER CT/P700	Unit	1
300341	BLISTER PACK MINI FUEL CELL YELLOW (2 X FC)	Unit	1
402500	ROUND BATTERY IM200	Unit	1



## IMPULSE IM45 CW

### CORDLESS COIL NAILER FOR ROOFING BITUMEN TO WOOD FIXING WITH 22 TO 45 MM NAILS

#### FEATURES AND BENEFITS

- The first cordless coil nailer for bitumen and shingle applications on the market, which is faster and safer than all existing methods with no need for compressors and hoses.
- 125 nails per coil in the magazine, so you can work for longer without refilling your tool.
- Optimised balance and soft grip handle increase your comfort during your nailing operations.



#### APPLICATIONS

- Bitumen shingles fixing to wood
- Bitumen paper fixing to wood

#### TECHNICAL DATA

Power:	30 J
Product weight with battery:	3,10 kg
Dimension:	296 x 127 x 315 mm
Maximum Cycle rate per sec:	2
Maximum Cycle rate per hour:	1000
Maximum Cycle Rate Per Day:	3000
Fastener length range:	22-45 mm
Magazine capacity:	125
Battery type:	NiCd
Battery charge time:	120 min
Fixings per battery charge:	2200
Operating temperature range:	+5°C...+25°C
Workplace Relevant Emission, LpA:	86 dB(A)
LpCpeak (EN 12549):	< 130 dB(C)
Vibrations 3 axes (EN ISO 8662-11) ahv:	2 m/s <sup>2</sup>

#### TOOLS

Code	Description
018600	IM45 CW ROOFING COIL NAILER

#### CONSUMABLES

Code	Description	Service class	Qty. Fuel Cells	Quantity
142400	NFP CW3,0X22 SMOOTH EG	1	1	1000
142401	NFP CW3,0X25 SMOOTH EG	1	1	1000
142402	NFP CW3,0X22 SMOOTH HDG	3	1	1000
142403	NFP CW3,0X25 SMOOTH HDG	3	1	1000
142404	NFP CW3,0X35 SMOOTH HDG	3	1	1000
142405	NFP CW3,0X25 RING SSA2	3	1	1000

#### ACCESSORIES

Code	Description	Packaging	Quantity
035460	CHARGER IM45/50/65/350+/PULSA 700/1000	Unit	1
404717	BATTERY IM45/50/65/350+	Unit	1
013690	IMPULSE/PULSA CLEANING KIT	Unit	1
900507	CAR ADAPTER	Unit	1
115251	IMPULSE / PULSA CLEANER 300ML	Unit	1
575722	FUEL CELLS BLISTER FOR IM45 CW (2 X FC)	Unit	1
900505	230V-12V ADAPTER CT/P700	Unit	1



## IMPULSE IM200/50 S16

### FOR WOODEN ROOFING AND INSULATION PANELS

#### FEATURES AND BENEFITS

- Lightweight, convenient, quick and easy maintenance
- Constant impact force
- Precise control of stapling depth



#### APPLICATIONS

- Edge Protection

#### TECHNICAL DATA

Power:	35 J
Product weight with battery:	3,10 kg
Dimension:	343 x 105 x 318 mm
Maximum Cycle rate per sec:	2
Maximum Cycle rate per hour:	500
Maximum Cycle Rate Per Day:	3000
Fastener length range:	16-50 mm
Magazine capacity:	150
Battery type:	NiCd
Battery charge time:	120 min
Fixings per battery charge:	4000
Operating temperature range:	+5°C...+49°C
Workplace Relevant Emission, LpA:	90 dB(A)
LpCpeak (EN 12549):	< 130 dB(C)
Vibrations 3 axes (EN ISO 8662-11) ahv:	2,5 m/s <sup>2</sup>

#### TOOLS

Code	Description
900078	GAS STAPLER

#### CONSUMABLES

Code	Description	Service class	Qty. Fuel Cells	Qty.
012300	STAPLE PACK S16 32MM GALV CHISEL POINT	1	2	3000
012301	STAPLE PACK S16 38MM GALV CHISEL POINT	1	2	3000
012302	STAPLE PACK S16 51MM GALV CHISEL POINT	1	2	3000
012303	STAPLE PACK S16 19MM GALV CHISEL POINT	1	2	3000
012306	STAPLE PACK S16 25MM GALV CHISEL POINT	1	2	3000
012304	STAPLE PACK S16 38MM GALV DIVERGENT POINT	1	2	3000

#### ACCESSORIES

Code	Description	Packaging	Quantity
402500	ROUND BATTERY IM200	Unit	1
013690	IMPULSE/PULSA CLEANING KIT	Unit	1
900507	CAR ADAPTER	Unit	1
115251	IMPULSE / PULSA CLEANER 300ML	Unit	1
300341	BLISTER PACK MINI FUEL CELL YELLOW (2 X FC)	Unit	1
900505	230V-12V ADAPTER CT/P700	Unit	1
035460	CHARGER IM45/50/65/350+/PULSA 700/1000	Unit	1
013015	KIT IM200 S16 FPB	Unit	1



## IMPULSE IM50 F18 LITHIUM

### FINE FINISHING NAILER FOR JOINERS AND FITTERS

#### FEATURES AND BENEFITS

- Constant impact energy
- Accurate drive depth adjustment (brads flush or countersunk)
- Profiled nose for accurate firing
- F18 mini brads from 16 to 50 mm long, for a wide range of applications

#### APPLICATIONS

- Packaging

#### TECHNICAL DATA

Power:	25 J
Product weight with battery:	2,10 kg
Dimension:	307 x 288 x 90 mm
Maximum Cycle rate per sec:	2-3
Maximum Cycle rate per hour:	1000
Maximum Cycle Rate Per Day:	4000
Fastener length range:	16-50 mm
Magazine capacity:	100
Battery type:	Lithium
Battery charge time:	60 min
Fixings per battery charge:	6000
Operating temperature range:	+5°C...+49°C
Workplace Relevant Emission, LpA:	88 dB(A)
LpCpeak (EN 12549):	< 130 dB(C)
Vibrations 3 axes (EN ISO 8662-11) ahv:	2,3 m/s <sup>2</sup>

#### TOOLS

Code	Description
013332	PASLODE TRIM IM50 F18 LITHIUM

#### CONSUMABLES

Code	Description	Service class	Qty. Fuel Cells	Quantity
395192	F18 PACK 16MM GALV	1	2	2000
395193	F18 PACK 25MM GALV	1	2	2000
395194	F18 PACK 32MM GALV	1	2	2000
395195	F18 PACK 38MM GALV	1	2	2000
395196	F18 PACK 150MM GALV	1	2	2000
395464	F18 PACK 25MM STAINLESS STEEL A2	3	2	2000
395465	F18 PACK 32MM STAINLESS STEEL A2	3	2	2000
395466	F18 PACK 38MM STAINLESS STEEL A2	3	2	2000
395467	F18 PACK 50MM STAINLESS STEEL A2	3	2	2000

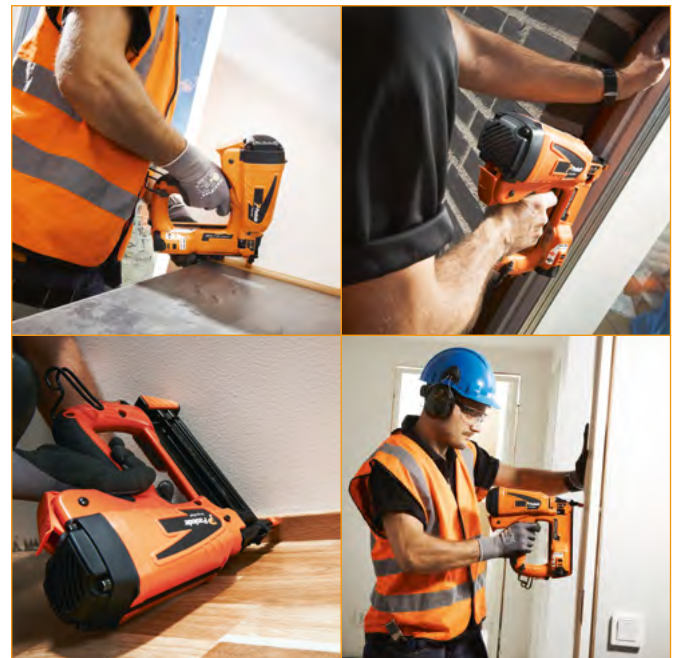
#### ACCESSORIES

Code	Description	Packaging	Quantity
018880	PASLODE LITHIUM BATTERY	Unit	1
018881	PASLODE LITHIUM CHARGER EU	Unit	1
900507	CAR ADAPTER	Unit	1
013690	IMPULSE/PULSA CLEANING KIT	Unit	1
115251	IMPULSE / PULSA CLEANER 300ML	Unit	1
300341	BLISTER PACK MINI FUEL CELL YELLOW (2 X FC)	Unit	1



#### CONTENT OF THE CARRYING CASE

- Straight F18 Brad Nailer
- High quality tool box
- Lithium battery
- Lithium battery charger
- Safety glasses to EN166:F
- Allen key
- Instruction manual
- Expanded view
- Safety instructions
- CE Declaration of Conformity





## IMPULSE IM65 F16 LITHIUM VERSATILE FINISH NAILER FOR JOINERS

### FEATURES AND BENEFITS

- Versatile with an extensive range of F16 brads, from 22 to 63 mm
- Constant impact energy
- Accurate drive depth adjustment (brads flush or countersunk)
- The lightest nailer in its category, with great battery and cartridge life

### APPLICATIONS

- Composite Tiles

### TECHNICAL DATA

Power:	30 J
Product weight with battery:	2,10 kg
Dimension:	301 x 288 x 90 mm
Maximum Cycle rate per sec:	2-3
Maximum Cycle rate per hour:	1000
Maximum Cycle Rate Per Day:	4000
Fastener length range:	16-63 mm
Magazine capacity:	100
Battery type:	Lithium
Battery charge time:	60 min
Fixings per battery charge:	6000
Operating temperature range:	+5°C...+49°C
Workplace Relevant Emission, LpA:	90 dB(A)
LpCpeak (EN 12549):	< 130 dB(C)
Vibrations 3 axes (EN ISO 8662-11) ahv:	2,5 m/s <sup>2</sup>

### TOOLS

Code	Description
013322	PASLODE TRIM IM65 F16 LITHIUM EU

### CONSUMABLES

Code	Description	Service class	Qty. Fuel Cells	Quantity
921586	F16 PACK 19MM GALV	1	2	2000
921587	F16 PACK 25MM GALV	1	2	2000
921588	F16 PACK 32MM GALV	1	2	2000
921589	F16 PACK 38MM GALV	1	2	2000
921590	F16 PACK 45MM GALV	1	2	2000
921591	F16 PACK 50MM GALV	1	2	2000
921592	F16 PACK 63MM GALV	1	2	2000

### ACCESSORIES

Code	Description	Packaging	Quantity
018880	PASLODE LITHIUM BATTERY	Unit	1
018881	PASLODE LITHIUM CHARGER EU	Unit	1
900507	CAR ADAPTER	Unit	1
013690	IMPULSE/PULSA CLEANING KIT	Unit	1
115251	IMPULSE / PULSA CLEANER 300ML	Unit	1
300341	BLISTER PACK MINI FUEL CELL YELLOW (2 X FC)	Unit	1
012027	PANELLING PROBE IM65 F16 LITHIUM	Unit	1



### CONTENT OF THE CARRYING CASE

- Straight F16 Brad Nailer
- Short brads kit
- High quality tool box
- Lithium battery
- Lithium battery charger
- Safety glasses to EN166:F
- Allen key
- Instruction manual
- Expanded view
- Safety instructions
- CE Declaration of Conformity



## IMPULSE IM65A F16 LITHIUM ANGLED FINISH NAILER FOR JOINERS

### FEATURES AND BENEFITS

- Inclined magazine for accurate nailing in corners
- Constant impact energy even in the hardest woods
- Special tip positions the nailer for 45° nailing into panelling
- Accurate drive depth adjustment (brads flush or countersunk)

### APPLICATIONS

- Drywall to Timber

### TECHNICAL DATA

Power:	30 J
Product weight with battery:	2,00 kg
Dimension:	303 x 288 x 90 mm
Maximum Cycle rate per sec:	2-3
Maximum Cycle rate per hour:	1000
Maximum Cycle Rate Per Day:	4000
Fastener length range:	32-63 mm
Magazine capacity:	100
Battery type:	Lithium
Battery charge time:	60 min
Fixings per battery charge:	6000
Operating temperature range:	+5°C...+49°C
Workplace Relevant Emission, LpA:	92 dB(A)
LpCpeak (EN 12549):	131 dB(C)
Vibrations 3 axes (EN ISO 8662-11) ahv:	2,8 m/s <sup>2</sup>

### TOOLS

Code	Description
013312	PASLODE TRIM IM65A F16 LITHIUM

### CONSUMABLES

Code	Description	Service class	Qty. Fuel Cells	Quantity
300270	F16A PACK 32MM GALV	1	2	2000
300271	F16A PACK 38MM GALV	1	2	2000
300272	F16A PACK 45MM GALV	1	2	2000
300273	F16A PACK 51MM GALV	1	2	2000
300274	F16A PACK 63MM GALV	1	2	2000
300276	F16A PACK 32MM STAINLESS STEEL A2	3	2	2000
300277	F16A PACK 38MM STAINLESS STEEL A2	3	2	2000
300279	F16A PACK 50MM STAINLESS STEEL A2	3	2	2000
300280	F16A PACK 63MM STAINLESS STEEL A2	3	2	2000
395631	F16A PACK 38MM STAINLESS STEEL A4	3	2	2000
395632	F16A PACK 50MM STAINLESS STEEL A4	3	2	2000
395633	F16A PACK 63MM STAINLESS STEEL A4	3	2	2000

### ACCESSORIES

Code	Description	Packaging	Quantity
018880	PASLODE LITHIUM BATTERY	Unit	1
018881	PASLODE LITHIUM CHARGER EU	Unit	1
900507	CAR ADAPTER	Unit	1
013690	IMPULSE/PULSA CLEANING KIT	Unit	1
115251	IMPULSE / PULSA CLEANER 300ML	Unit	1
300341	BLISTER PACK MINI FUEL CELL YELLOW (2 X FC)	Unit	1
018930	PANELLING PROBE IM65A F16 LITHIUM	Unit	1



■ Standard ■ Electro galvanized ■ Hot dip galvanized (50 to 80 µm zinc coating)  
■ Stainless steel (Meeting the requirements of AISI 304 or AISI 316)



### CONTENT OF THE CARRYING CASE

- Angled F16 Brad Nailer
- High quality tool box
- Lithium battery
- Lithium battery charger
- Safety glasses to EN166:F
- Allen key
- Instruction manual
- Expanded view
- Safety instructions
- CE Declaration of Conformity

