

2007

AC Inverter • System series

SieiDrive ADV200



The next generation...

English

GEFRAN

SieiDrive ADV200

The “Powerful Platform” for advanced automation

The new inverter series “**SieiDrive ADV200**” represents an innovative concept in drive technology, as a result of the constant technological research and of the experience that the GEFRA Group has acquired keeping a constant presence aside that of the major sector players.

The new range has been engineered and developed to satisfy the real needs of System Integrators and OEM’s in order to provide them the best innovations and economical competitiveness in the international markets.

Based on full mechanical modularity and on a powerful, intuitive and “fully open” programming platform, **ADV200** offers absolute integration flexibility with high-end performance in any system architectures of the most advanced automation environments.



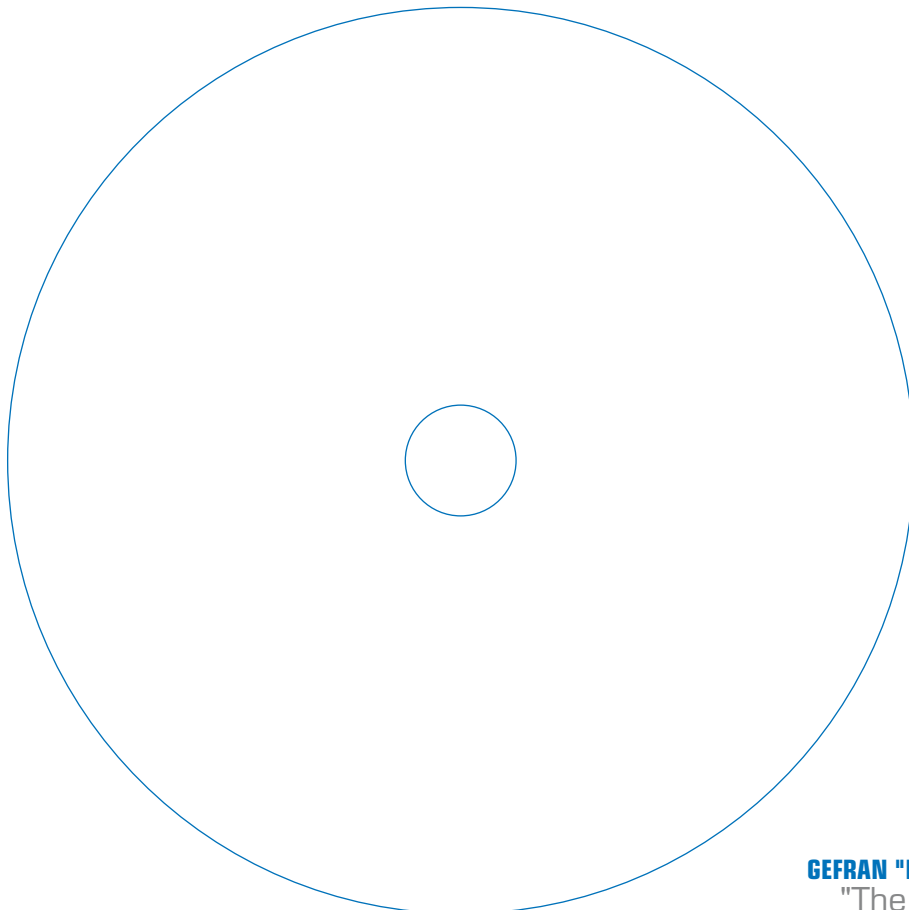
AC mains supply (V)	Power range ADV200 (kW)													
	0.75	1.5	2.2	3.0	4.0	5.5	7.5	11	15	18.5	22	30	37	45
230														
400	Size 1			Size 2			Size 3			Size 4				
575														
690														

On progress powers up to 1.5MW.

... Versatile, Powerful, Reliable

General Characteristics

⇒ AC mains supply	400Vac...690Vac, 50/60Hz
⇒ Power range	from 0.75kW to 1.5MW
⇒ Control mode	<ul style="list-style-type: none">• FOC Open Loop• FOC with Speed Feedback• V/f and V/f with feedback• PM Synchronous (on development)
⇒ Overload according with IEC146 Class 1 and Class 2	
⇒ Heavy and Light overload management	
⇒ Up to 4 options on board	
⇒ Fieldbus	<ul style="list-style-type: none">• CANopen• DeviceNet• Profibus DP• Ethernet real.time GDNNet
⇒ Safety Stop" card in accordance with EN 954-1 (Cat.3)	
⇒ Multilanguage programming software (5 languages)	
⇒ Advanced PLC according with the IEC61131-3 Standard	
⇒ Integrated Sequential PLC	
⇒ IP20 standard protection degree	
⇒ IP54 protection degree with external heatsink	
⇒ NEMA 1 protection degree with optional kit	



Modularity

An innovative concept of integrated technology that offers full modularity. Mountable side by side and with accessories specifically dedicated to system solutions, **ADV200** has been engineered to make installation easy for any operator, both in existing systems and in specific machine solutions, always offering a real reduction of required space in the cabinet and the best manageability.



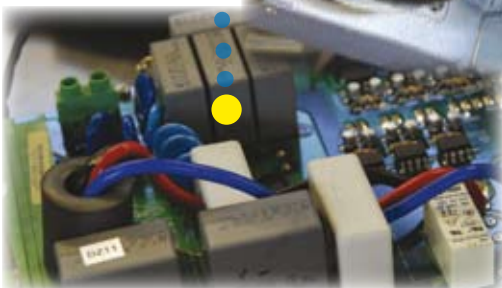
Fast Access

Structured to offer simple and fast management of the product in any situation of installation and mounting.

From the **terminal** access to the rack assembling of the **options**, each operation is quick and easy.

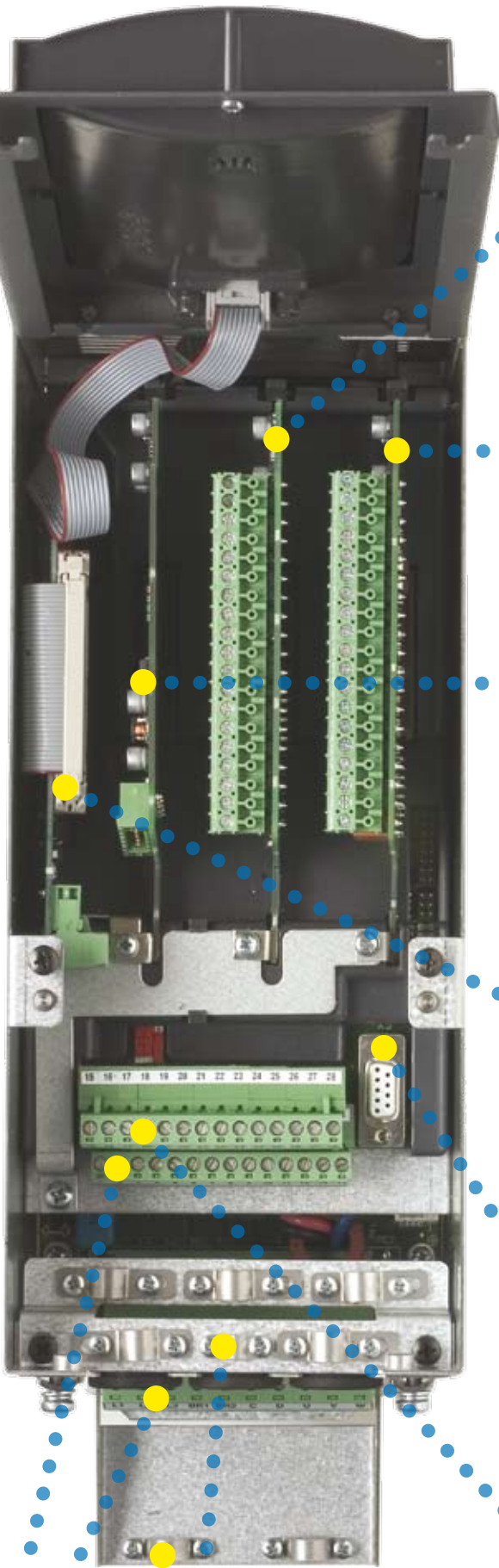
Integrated Quality

ADV200 **integrates** the fundamental devices for an absolute quality level, such as the **DC choke** that ensures maximum reliability in any conditions of working and the **input filter** that renders the drive in compliance with the EMC normative EN61800-3.



Smart Connections

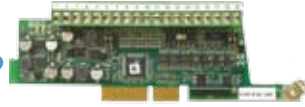
Dedicated accessories and fully removable terminals, ensure simple and fast installation and start-up in compliance with the EMC normative.



Options

ADV200 manages up to 3 option cards:

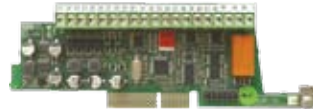
- Encoder interface



- Fieldbus interface

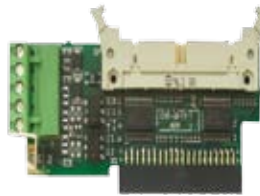


- I/O expansions



Safety Card

Integrated on board as the 4th option, the **EXP-SFTy** card allows the motor to be disabled without the use of a safety contactor on the drive output, guaranteeing compliance to the directive for machine safety EN954-1 category 3.



Serial Line

Integrated standard RS485 serial line with **Modbus RTU** protocol, for peer-to-peer or multidrop connections (with **EXP-485-ADV** card).

Modbus

Back-Up Supply

ADV200 can be supplied through an external +24Vdc supply in order to be kept active in case of mains input loss, ensuring in this situation the operation of all monitoring functions, programming and any connected fieldbus network.

Cables shield

OMEGA clamp to grounding 360° of shielded cables.

Programming Keypad

The man/machine interface is simple, fast and very functional thanks to the programming keypad **KB_ADV**.



- 4 lines display for 25 characters
- Clear alphanumeric text
- Full information of any parameters
- Fast Navigating Keys
- Custom Menu recalling Key
- Upload - Download and storage of 5 complete sets of drive parameters
- Removable up to 10 meters



Programming Software

Structured with 2 setting modes **Easy** and **Export**, to satisfy each level of user's skill and programming needs both for complex or easy installation.

A powerful platform but at the same time with a structure of menu/parameters that offers quick understanding, also facilitated by functionality of the keypad and the display.

Intuitive navigation and easy start-up function thanks to the "Wizard" tool.

ADV200 offers as standard 5 language programming (IT-ENG-FR-GER-SP) and the setup of "**customizable menu**"

Advanced Development Environment "MDPLC"

The advanced environment MDPLC is an integrated tool for the development of sophisticated application solutions, downloadable directly into the drive control board.

The MDPLC structure is in compliance with all the PLC languages according to the international



standard **IEC 61131-3**.

Sequential PLC

The Sequential PLC functions, **implemented as standard** into the ADV200, satisfy easily the most varying demands of modern machine sequences.

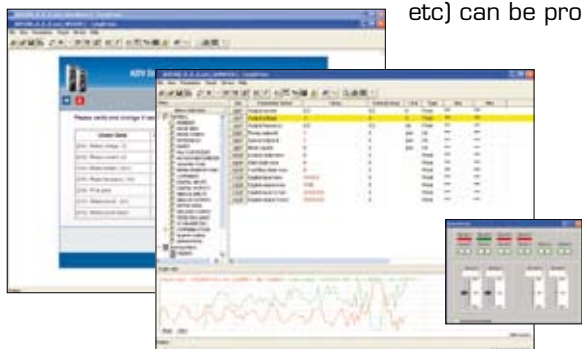


The on board timer, logic functions, comparators, etc... are easily programmable through the dedicated area of the PC tool configurator

GF-eXpress.

PC Configuration Tool "GF-eXpress"

All drives of the SieiDrive series and the automation devices of the Gefran Group (PLC, HMI, Instrumentation, etc) can be programmed by the use of the PC tool **GF-eXpress**.



- Programming through parameter list or block diagrams
- Modbus RTU interface
- Management of the file from the drive or the memory keypad
- Integrated oscilloscope
- Programming environment for Sequential PLC
- Tool configurable in 5 languages.

Technical Data

Performance

ADV200 offers the most advanced control technology thanks to a powerful 32 bit microcontroller, able to provide high performances in terms of motor control and accuracy contemporary with the management of today's sophisticated application systems.

	Control mode	Speed regulation accuracy (*)	Control Range
⇒ Accuracy	• FOC with Speed feedback	± 0,01% Rated motor speed	1 : 1000
	• FOC open loop	± 30% Rated motor slip	1 : 100
	• V/F	± 60% Rated motor slip	1 : 30

(*) referred to standard 4 poles motor

Standard Configuration Setting

⇒ KB_ADV programming keypad integrated	
⇒ Regulation Stage	<ul style="list-style-type: none"> • 2 Bipolar Analogue Inputs (Voltage/Current) • 2 Bipolar Analogue Outputs (1: Voltage/Current, 1: Voltage) • 6 Digital Inputs (PNP / NPN) • 2 Digital Outputs (PNP / NPN) • 2 Relay Outputs, single contact • RS485 Serial Line (Modbus RTU protocol)
⇒ Power Stage	<ul style="list-style-type: none"> • DC Choke integrated • EMC Filter integrated • Dynamic Braking Module integrated (up to 75kW)



Standards

⇒ Immunity / Emissions	CEE - EN 61800-3:2004
⇒ Programming	according to IEC 61131-3
⇒ Machines Directive	EN 954-1 Category 3

Environmental Condition

⇒ Enclosures	IP20 (IP54 dedicated series)
⇒ Ambient temperature	0 ... 40°C, +40°C...+50°C with derating
⇒ Altitude	Max 2000 m (up to 1000 m without current limitation)

Approvals

	in compliance with CEE directives, for low voltage devices.
	in compliance with American and Canadian market directives (in certification phase)

	Sizes - ADV	1007	1015	1022	1030	1040	2055	2075	2110	3150	3185	3220	4300	4370	4450		
ULN AC input voltage	Vac	400 Vac -15% ... 480 Vac +10%, 3 ph															
AC input frequency	Hz	50/60 Hz, ± 5%															
• CT : Costant Torque (150% overload)																	
AC Input Current for continuous service	A	2.1	3.7	4.9	6.5	8.1	11.1	14	19.6	26.4	32.3	39	53	64	74		
Inverter Output for continuous service	KVA	1.7	3	4	5.3	6.6	9	11.4	15.9	21.5	26.3	32	43	52	60		
Pn mot (Recommended motor output, fsw = default) :																	
@ ULN = 230 Vac	kW	0.37	0.75	1.1	1.5	2.2	3	4	5.5	7.5	11	11	15	18.8	22		
@ ULN = 400 Vac	kW	0.75	1.5	2.2	3	4	5.5	7.5	11	15	18.5	22	30	37	45		
@ ULN = 460 Vac	Hp	1	2	3	5	5	7.5	10	15	20	25	30	40	50	60		
I2N Rated Output current :																	
@ ULN = 230-400Vac	A	2.5	4.3	5.8	7.6	9.5	13	16.5	23	31	38	46	62	75	87		
@ ULN = 460Vac	A	2.3	3.9	5.2	6.8	8.6	11.7	14.9	20.7	27.9	34.2	41.4	55.8	67.5	78		
• VT : Variable Torque (110% overload)																	
AC Input Current for continuous service	A	3.7	4.9	6.5	8.1	11.1	14	19.6	26.4	32.3	39	53	64	74	89		
Inverter Output for continuous service	KVA	3	4	5.3	6.6	9	11.4	15.9	21.5	26.3	32	43	52	60	73		
Pn mot (Recommended motor output, fsw = default)																	
@ ULN = 230 Vac	kW	0.75	1.1	1.5	2.2	3	4	5.5	7.5	11	11	15	18.5	22	30		
@ ULN = 400 Vac	kW	1.5	2.2	3	4	5.5	7.5	11	15	18.5	22	30	37	45	55		
@ ULN = 460 Vac	Hp	2	3	5	5	7.5	10	15	20	25	30	40	50	60	75		
I2N Rated Output current :																	
@ ULN = 230-400Vac	A	4.3	5.8	7.6	9.5	13	16.5	23	31	38	46	62	75	87	105		
@ ULN = 460Vac	A	3.9	5.2	6.8	8.6	11.7	14.9	20.7	27.9	34.2	41.4	55.8	67.5	78.3	94.5		
• Overload : Heavy duty																	
150% * In (1' each 5')	A	3.75	6.5	8.7	11.4	14.3	19.5	24.7	34.5	46.5	57	69	93	113	131		
180% * In (0.5" each 5')	A	4.5	7.7	10.4	13.7	17.1	23.4	29.7	41.4	55.8	68.4	82.8	111.6	135	157		
• Overload : Normal duty																	
110% * In (1' each 5')	A	4.7	6.4	8.4	10.5	14.3	18.1	25.3	34.1	41.8	50.6	68.2	82.5	95.7	116		
U2 Max output voltage	V	0.98 x ULN (AC Input voltage)															
f2 Max output frequency	Hz	500															
fsw Switching frequency (Default)		8	8	4	4	4	4	4	4	4	4	4	4	4	4		
fsw Switching frequency (Max)		12	12	12	12	12	12	12	12	12	12	12	12	12	8		
Dimensions																	
(width x height x depth)	mm	120 x 320 x 235.1				150 x 392 x 250.1				180 x 517 x 250.1				260 x 580 x 300			
	inch	4.72 x 12.6 x 9.26				5.91 x 15.43 x 9.85				7.09 x 20.35 x 9.85				10.24 x 22.83 x 11.81			
Weight	kg	5.8				10.2				16.4				22			
	lbs	12.8				22.5				36.2				48.5			

GEFRAN BENELUX

Lammerdries, 14A
B-2250 OLEN
Ph. +32 (0) 14248181
Fax. +32 (0) 14248180
info@gefran.be

**GEFRAN BRASIL
ELETRÔELETRÔNICA**

Avenida Dr. Altino Arantes,
377/379 Vila Clementino
04042-032 SÃO PAULO - SP
Ph. +55 (0) 1155851133
Fax +55 (0) 1155851425
gefran@gefran.com.br

GEFRAN DEUTSCHLAND

Philipp-Reis-Straße 9a
63500 SELIGENSTADT
Ph. +49 (0) 61828090
Fax +49 (0) 6182809222
vertrieb@gefran.de

GEFRAN SUISSE SA

Rue Fritz Courvoisier 40
2302 La Chaux-de-Fonds
Ph. +41 (0) 329684955
Fax +41 (0) 329683574
office@gefran.ch

GEFRAN - FRANCE

4, rue Jean Desparmet - BP 8237
69355 LYON Cedex 08
Ph. +33 (0) 478770300
Fax +33 (0) 478770320
commercial@gefran.fr
contact@sieifrance.fr

GEFRAN INC

Automation and Sensors
8 Lowell Avenue
WINCHESTER - MA 01890
Toll Free 1-888-888-4474
Ph. +1 (781) 7295249
Fax +1 (781) 7291468
info@gefranisi.com

GEFRAN INC

Motion Control
14201 D South Lakes Drive
NC 28273 - Charlotte
Ph. +1 704 3290200
Fax +1 704 3290217
salescontact@sieiamerica.com

SIEI AREG - GERMANY

Zachersweg, 17
D 74376 - Gemmingheim
Ph. +49 7143 9730
Fax +49 7143 97397
info@sieiareg.de

GEFRAN SIEI - UK Ltd.

7 Pearson Road, Central Park
TELFORD, TF2 9TX
Ph. +44 (0) 845 2604555
Fax +44 (0) 845 2604556
sales@gefran.co.uk

GEFRAN SIEI - ASIA

Blk. 30 Loyang way
03-19 Loyang Industrial Estate
508769 SINGAPORE
Ph. +65 6 8418300
Fax. +65 6 7428300
info@sieiasia.com.sg

GEFRAN SIEI Electric (Shanghai) Pte Ltd

Block B, Gr.Flr, No.155, Fu Te Xi Yi Road,
Wai Gao Qiao Trade Zone
200131 Shanghai
Ph. +86 21 5866 7816
Ph. +86 21 5866 1555
gefransh@online.sh.cn

SIEI DRIVES TECHNOLOGY

No.1265, B1, Hong De Road,
Jia Ding District
201821 Shanghai
Ph. +86 21 69169898
Fax +86 21 69169333
info@sieiasia.com.cn

AUTHORIZED DISTRIBUTORS

- | | |
|----------------|----------------------|
| Argentina | Saudi Arabia |
| Austria | Singapore |
| Australia | Slovakia Republic |
| Brasil | Slovenia |
| Bulgaria | South Africa |
| Canada | Spain |
| Chile | Sweden |
| Cyprus | Taiwan |
| Colombia | Thailand |
| Czech Republic | Tunisia |
| Denmark | Turkey |
| Egypt | Ukraine |
| Finland | United Arab Emirates |
| Greece | Venezuela |
| Hong Kong | |
| Hungary | |
| India | |
| Iran | |
| Israel | |
| Japan | |
| Jordan | |
| Korea | |
| Lebanon | |
| Malaysia | |
| Maroc | |
| Mexico | |
| New Zealand | |
| Norway | |
| Peru | |
| Poland | |
| Portugal | |
| Rumania | |
| Russia | |



GEFRAN S.p.A.

Via Sebina 74
25050 Provaglio d'Iseo (BS) ITALY
Ph. +39 030 98881
Fax +39 030 9839063
info@gefran.com
www.gefran.com

Drive & Motion Control Unit

Via Carducci 24
21040 Gerenzano [VA] ITALY
Ph. +39 02 967601
Fax +39 02 9682653
infomotion@gefran.com

Technical Assistance :
technohelp@gefran.com

Customer Service :
motioncustomer@gefran.com
Ph. +39 02 96760500
Fax +39 02 96760278



Certificate No. FM 38167

Rev. 0.0 - 19-11-2007



1S9D31