

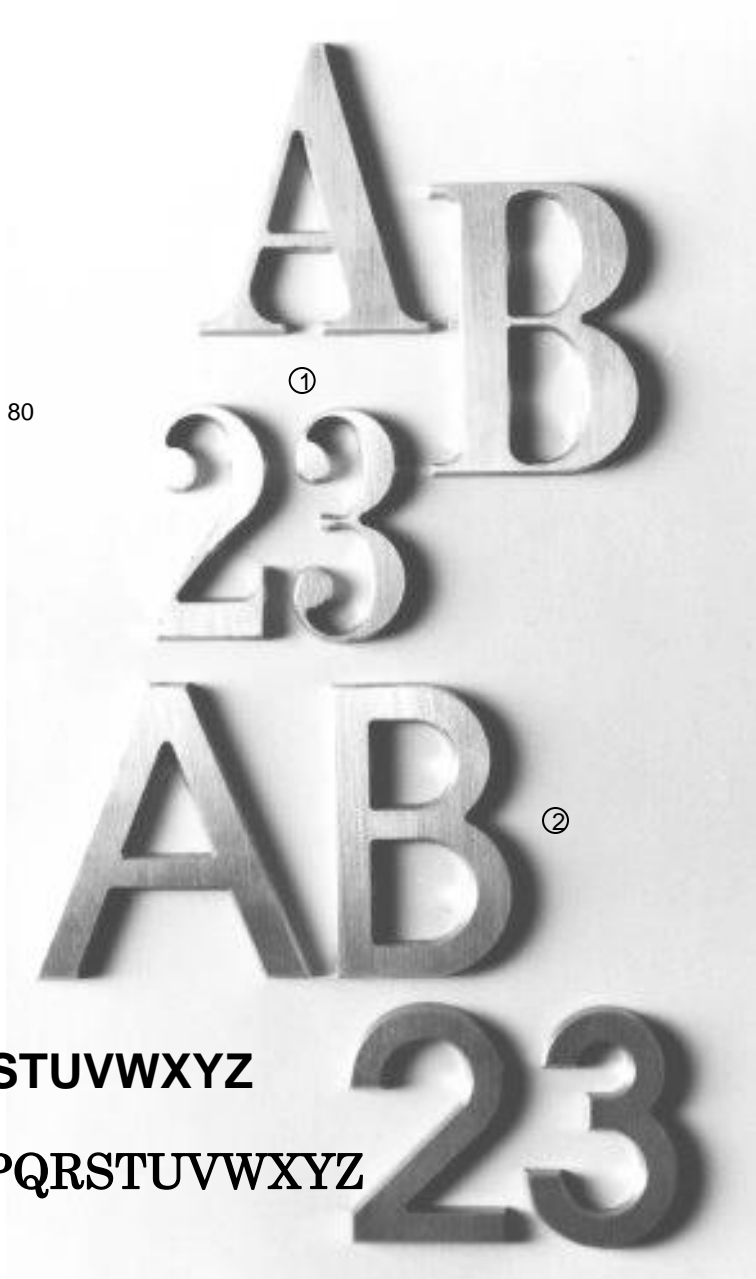
CARACTERE IN RELIEF

LITERE SI CIFRE METALICE

Pentru signalistica interioara si exterioara, elegante si durabile.

CARACTERISTICI:

- # Din metal, grosime 3 mm **ALUMINIU** sau **ALAMA**
- # Finisare: lustruite si lacuite
- # Lacuirea este de lunga durata (« coapta in cuptor »)
- # Fixare : - prin lipire
- prin stifturi de alama filetate Ø 2
- # Inaltime caractere in mm : 30 - 40 - 50 - 60 - 80
100 - 120 - 150 – 200
- # Forme:
 - **CAPITALE** (Century Bold) ①
 - **BATON** (Avant-garde) ②



ABCDEFGHIJKLMNOPQRSTUVWXYZ

123456789

ABCDEFGHIJKLMNOPQRSTUVWXYZ