

# JETOANE - MEDALII

## REPERARE - IDENTIFICARE

Aceste piese de metal sunt gravate in relief pe una sau pe ambele fețe.  
Acestea pot fi personalizate si prin marcare in profunzime ( numerotare de exemplu)

### CARACTERISTICI

#### 1. TIMBRE CAZANE

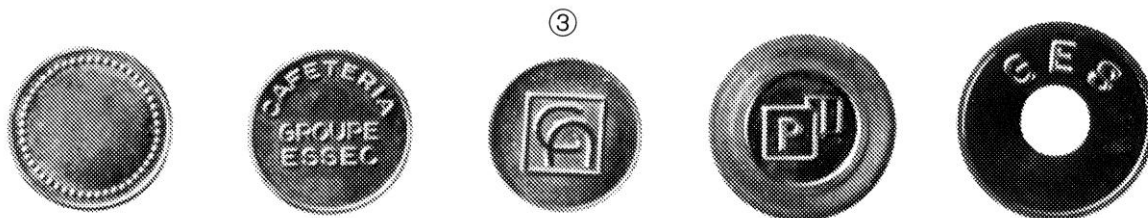
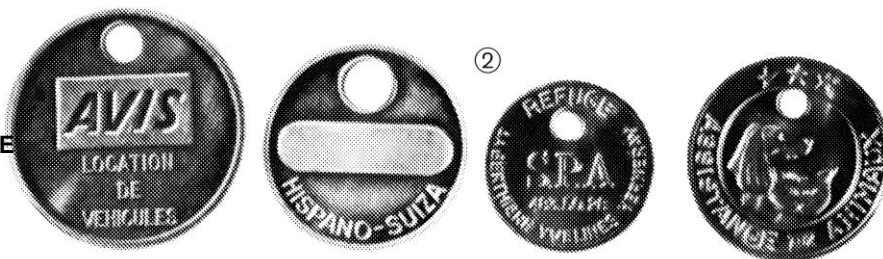
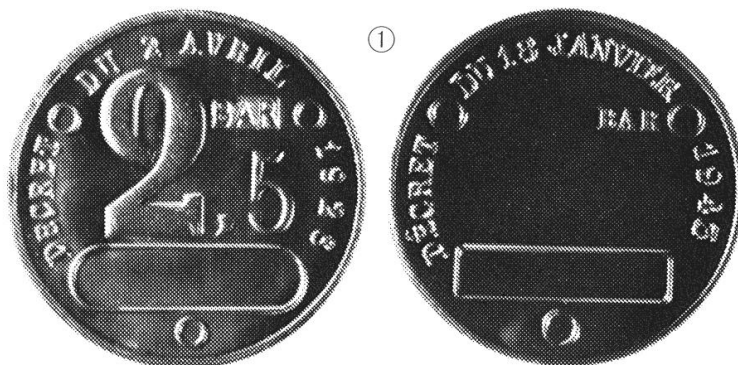
- # Format in mm : Ø 50 - 36 - 25
- # Cupru grosimea 2 mm
- # Decret din 2 aprilie 1926
- # Decret din 18 ianuarie 1943
- # Texte speciale la cerere

#### 2. JETOANE - MEDALII

- # Formate standard in mm :  
Ø 25 - 30 - 35 - 40 - 50
- # Aluminiu - Alama
- # Grosimea 1 – 1.5 – 2 mm
- # Cu sau fara gaura
- Alte formate la cerere

#### 3. JETOANE PENTRU AUTOMATE CU MONEDA

- # Formate standard in mm :  
Ø 21,15 - 22,6 - 25,25 - 30
- # Alama grosimea  
1.6 – 1.7 - 2 – 2.1 mm
- # Alte formate la cerere



Scara 1:1