





# SERIE ROTAZIONALE ROTATIONAL CLAMPS

Nello stampaggio rotazionale della plastica è richiesto un tipo di serraggio in grado di lavorare in maniera sicura e veloce ad alte temperature (240-300 °C.) senza incertezze in chiusura ed apertura. Ecco così realizzata una intera serie di attrezzi di serraggio adatti a questo tipo di lavoro. Questa serie è in parte derivata dalla produzione generale Speedy Block con apporto di opportune modifiche (accoppiamenti con diverse tolleranze, modifiche nelle geometrie, diverse finiture, ecc., ecc.), ed in parte realizzata seguendo i consigli e le aspettative degli utilizzatori che ne hanno sollecitato lo studio.

The rotational moulding of the plastic requires clamping devices able to work in a quick and safe way at very high temperatures (240-300°C.) without any hesitation when opening and clamping. Here's how we have achieved a full series of clamps suitable to this kind of duty.

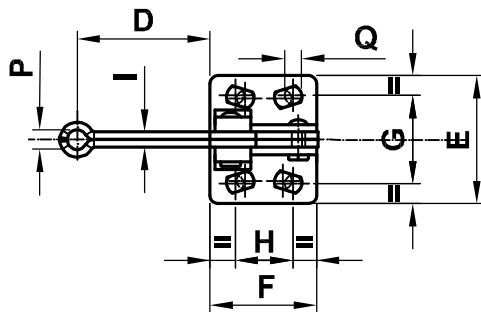
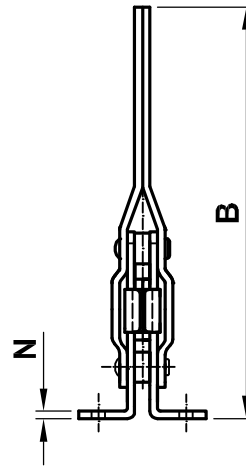
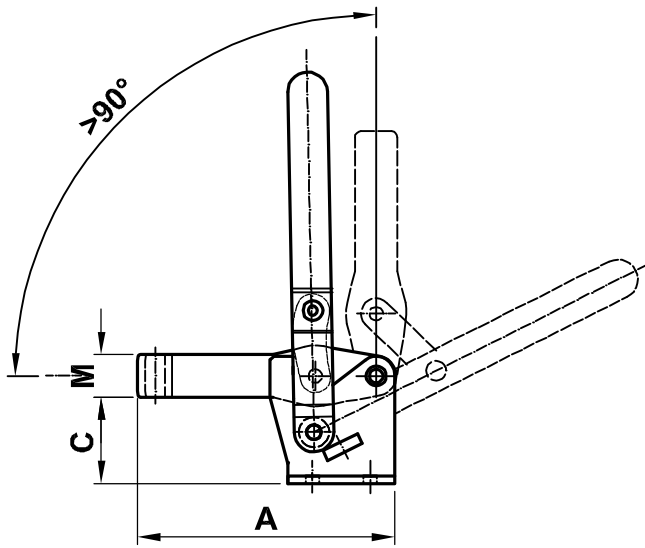
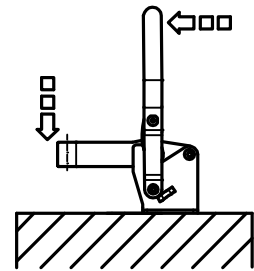
This series is in part spin off from the Speedy Block's mass production with the contribution of suitable alterations (couplings with different tolerances, modified geometries, different finishing, ecc.), and in part is achieved following the suggestions and the expectations of the users which urged their study.



# SERIE VERTICALE VERTICAL SERIES



**NUOVO  
NEW**

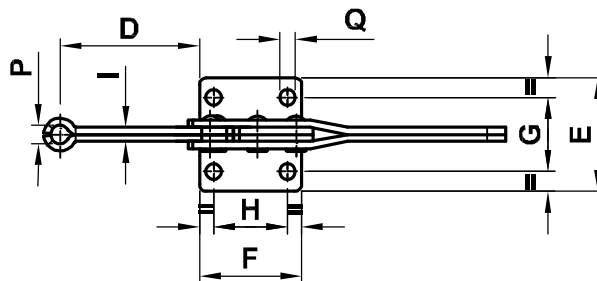
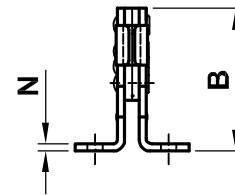
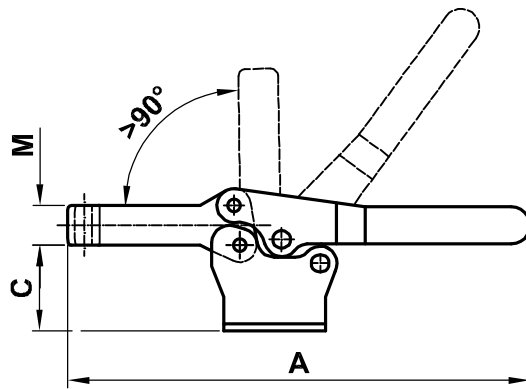
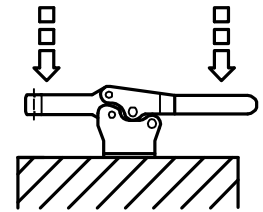


	A	B	C	D	E	F	G	H	I	M	N	P	Q	Fh1	Fh2	gr.
<b>130/ER</b>	85	136	28	44	42	35	27-29	12,5-19	5	16	2,5	6,5	5,6	160	300	210
<b>230/ER</b>	110	164	33,5	60	45	43	32	19-20	6	18	3	8	6,7	200	320	330
<b>330/ER</b>	128	189	43	69	65	50	45-46	29-32	7	22	3,5	10,5	8,5	240	400	519

# SERIE ORIZZONTALE HORIZONTAL SERIES

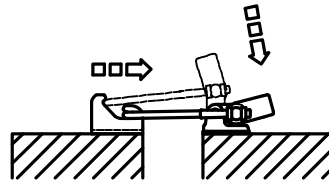


**NUOVO  
NEW**

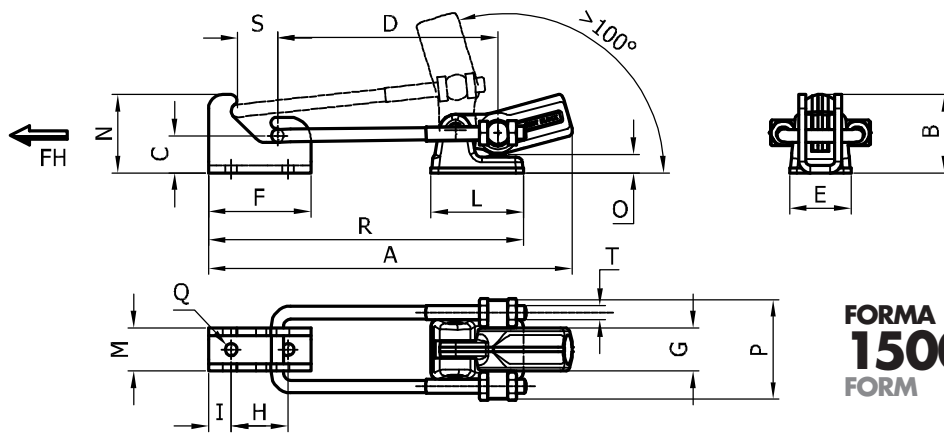
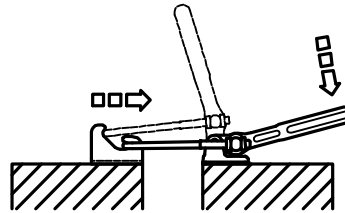


	A	B	C	D	E	F	G	H	I	M	N	P	Q	Fh1	Fh2	gr.
<b>130/OR</b>	162	51	29	48	40	36	26	26	5	14	2,5	6,5	5,5	100	200	185
<b>230/OR</b>	190	61,5	36,5	56	42	44	28,5	26	6	18	3	8,5	6,5	170	330	300
<b>355/OR</b>	260,5	83	50	89,5	56	60	41	41	7	22	3,5	10,5	8,5	180	400	700

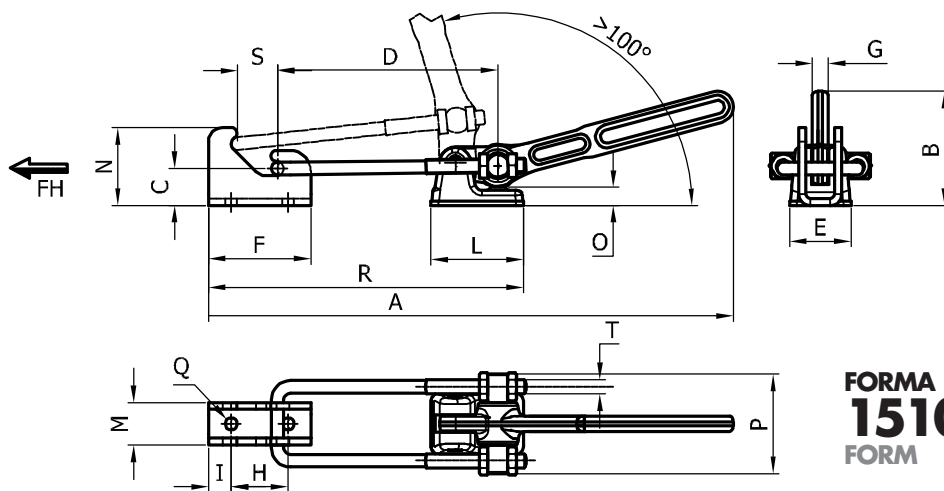
# SERIE A TIRANTE LATCH SERIES



**NUOVO  
NEW**



**FORMA  
1500/T2S  
FORM**



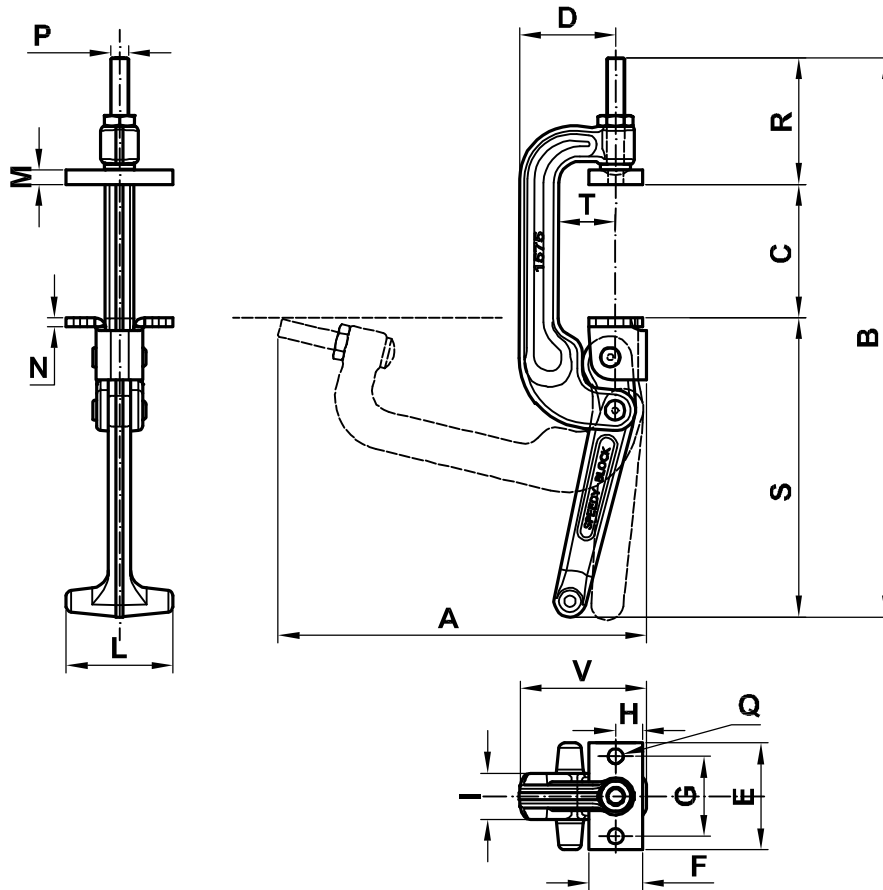
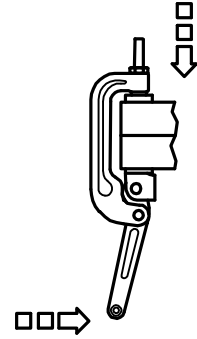
**FORMA  
1510/T2S  
FORM**

	A	B	C	D	E	F	G	H	I	L	M	N	P	Q	R	S	T	Fh	gr.
<b>1500/T2S</b>	256	55	26	155	43	72	30	40	16	65	30	55	70	8,5	222	28	M10	1500	1240
<b>1510/T2S</b>	369	80,5	26	155	43	72	11	40	16	65	30	55	70	8,5	222	28	M10	1500	1320

**SERIE A C C TYPE SERIES**



**NUOVO  
NEW**



	A	B	C	D	E	F	G	H	I	L	M	N	P	Q	R	S	T	Fh	gr.
<b>1540</b>	173	280	40	54	60	30	45	15	26	60	8	5	M10	8,5	71	168	32	1500	1110
<b>1575</b>	207	315	75	54	60	30	45	15	26	60	8	5	M10	8,5	71	168	32	1500	1190