

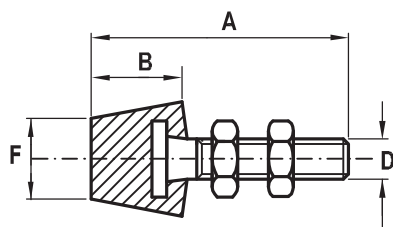
Puntale testa esagonale con 2 dadi.

ANCHE IN ACCIAIO INOX (Vedi tabella)

Hex head spindle assembly fitted with 2 hex nuts.

IN STAINLESS STEEL AS WELL (See below)

	INOX	A	B	D
10099	50099	20	3	M4
10100	50100	35	3	M5
10101	50101	45	3,5	M6
10102	50102	55	4	M8
10103		65	5,5	M10
10104		80	7	M12
10105		120	8	M12



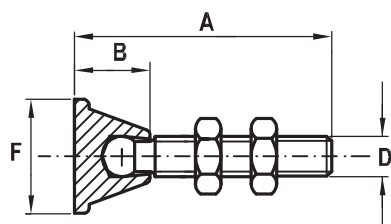
Puntale con testa ricoperta in neoprene e 2 dadi.

ANCHE IN ACCIAIO INOX (Vedi tabella)

Splines wit vulkanized neoprene thrust and 2 hex nuts.

IN STAINLESS STEEL AS WELL (See below)

	INOX	A	B	D	F
10140	50140	45	11	M5	10
10141	50141	55	12	M6	13
10142	50142	68	16	M8	16
10143		80	20	M10	20



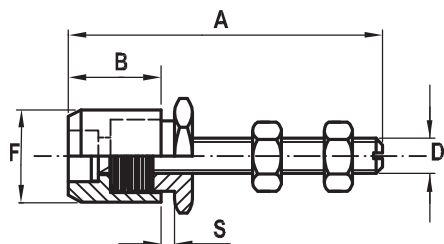
Puntale a testa snodata e 2 dadi.

ANCHE IN ACCIAIO INOX (Vedi tabella)

Swivelfoot spindle assembly and 2 hex nuts.

IN STAINLESS STEEL AS WELL (See below)

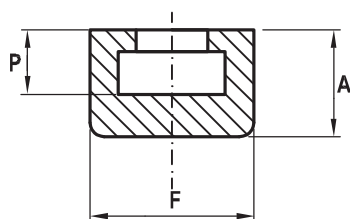
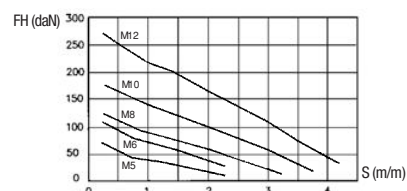
	INOX	A	B	D	F
10120	50120	36	9,5	M5	14
10121	50121	45	10	M6	16
10122	50122	65	12	M8	18
10123		75	14	M10	20
10124		85	16	M12	24
10125		125	16	M12	24



Puntale a molla.

Spring spindle.

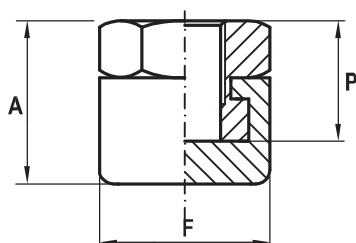
	A	B	D	F
10128	45	13	M5	10
10129	50	15	M6	13
10130	70	17	M8	15
10131	85	20	M10	18
10132	106	24	M12	21



Cappuccio neoprene per puntali a testa esagonale.

Neoprene cap for hex head spindle.

	A	F	P	PER PUNTALE/ FOR SPINDLE
1099	6,5	11	4	10099-M4
1100	8	12	5,5	10100-M5
1101	10	15	6	10101-M6
1102	13	19	7,5	10102-M8
1103	16	24	9	10103-M10
1104	19	26	10,5	10104-10105-M12



Cappuccio neoprene con inserto filettato.

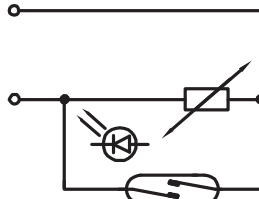
Neoprene cap with threaded bush.

	A	F	P	PER PUNTALE/ FOR SPINDLE
1200	11	12	8,5	M5
1201	14	15	10	M6
1202	18	19	12,3	M8
1203	23,5	24	16,5	M10
1204	26	26	17,5	M12



Interruttori di prossimità.

Proximity switch.



AU450 per modelli / for model:

400/APM/EPM - 2100/SPM

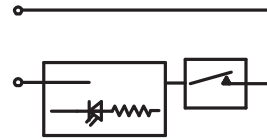
AU460 per modelli / for model:

200/APM/EPM - 300/APM/EPM

200/APVM/EPVM - 200/APVMS/EPVMS

300/APVM/EPVM - 300/APVMS/EPVMS

360/SPM - 1100/SPM



AU470 per modelli / for model:

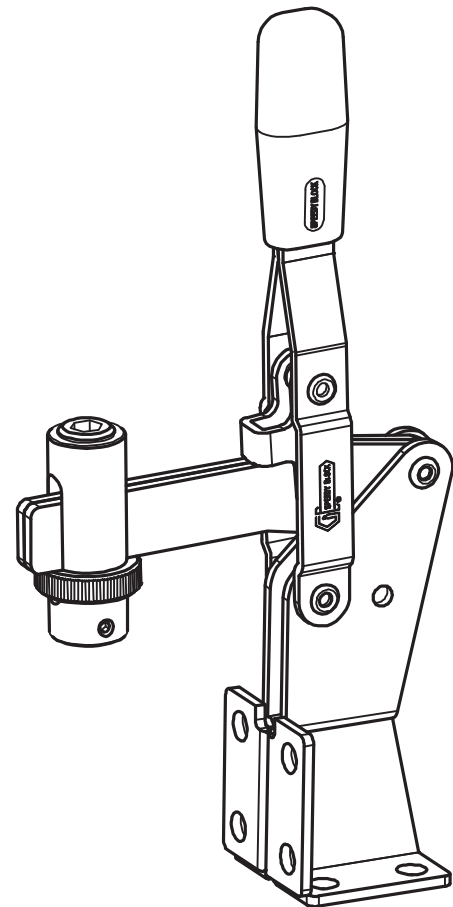
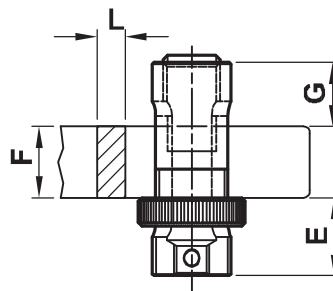
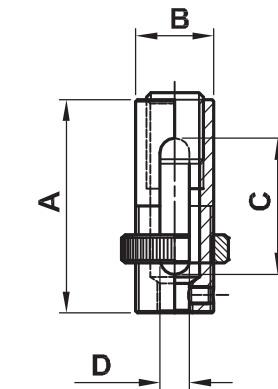
1000/EPM/EPVM

2000/EPM/EPVM



Porta puntale

Holding spindle



	A	B	D	E	F	G	L	UTILIZZATO PER LA SERIE / ACCORDING TO THE SIZE
10160	31	12	M5	8-14	11	6-12	4	70/B/F-75/O/P-70/EP3
10162	40	16	M6	10-18	14	8-16	5	125/B/F-130/O/P-125/EP3
10164	51	18	M8	13-23	18	10-20	6	200/B/F/EV/EP3/EPV3/EPV3S-230/O/P
10166	57	20	M8	15-25	22	10-20	7	355/O/P
10168	60	22	M10	14-28	20	12-24	8	300/B/F/EV/EP3/EPV3/EPV3S

Impugnatura ergonomiche

Ergonomic handles



Utilizzato per la serie/according to size

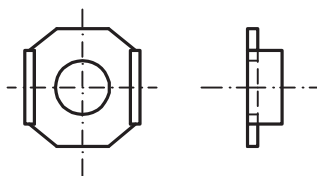
10150	70/A/B/E/F/AS/ASD/ASS-80/AS 50/ASD/ASS-75/M/N/O/P/MX/NX/OX/PX/MF/MFX
10151	125/A/B/E/F-120/AS-360/AS-1/130/M/N/O/ P/MX/NX/OX/PX/MF/MFX/LLA01-LLB/01-LLE/01-LLF/01
10152	200/A/B/E/F-165/AS- 230/M/N/O/P/MX/NX/OX/PX/MF/MFX
10153	200/AV/EV/AVF/EVF-300/A/B/E/F-200/T/TF-300/AS-340/AS
10154	400/A/B/E/F-300/AV/EV/AVF/EVF/T/TF-1100/AS 355/M/N/O/P/MF/LLA02-LLB/02-LLE/02-LLF/02
10155	500/A/B/E/F-400/T/TF/2100/AS-3100/AS-455/M/N/O/P
10156	1000/F-2000/F-LLE03-LLF03
10157	3000/F
10158	160/AS/ASD/ASS

Rondella piegata.

ANCHE IN ACCIAIO INOX (Vedi tabella)

Flanged Washer.

IN STAINLESS STEEL AS WELL (See below)



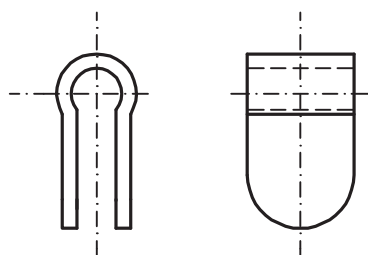
	VERSIONE ACCIAIO INOX ST. STEEL VERSION	UTILIZZATO PER LA SERIE/ACCORDING TO THE SIZE	PER PUNTALE/ FOR SPINDLE
20105	50105	DA N.25	M4
20106	50106	DA N.70	M5
20107	50107	DA N.115-125	M6
20108	50108	DA N.200-230	M8
20109		DA N.300-355	M10
20110		DA N.400-455-500	M12

Fascetta porta vite.

ANCHE IN ACCIAIO INOX (Vedi tabella)

Bolt retainer.

IN STAINLESS STEEL AS WELL (See below)



	VERSIONE ACCIAIO INOX ST. STEEL VERSION	UTILIZZATO PER LA SERIE/ACCORDING TO THE SIZE	PER PUNTALE/ FOR SPINDLE
10180	50180	DA N.70	M5
10181	50181	DA N.130-125	M6
10182	50182	DA N.200	M8
10183		DA N.300	M10
10184		DA N.355	M12
10185		DA N.400	M12
10186		DA N.455	M12
10187		DA N.500	M12
10188		DA N.230	M8