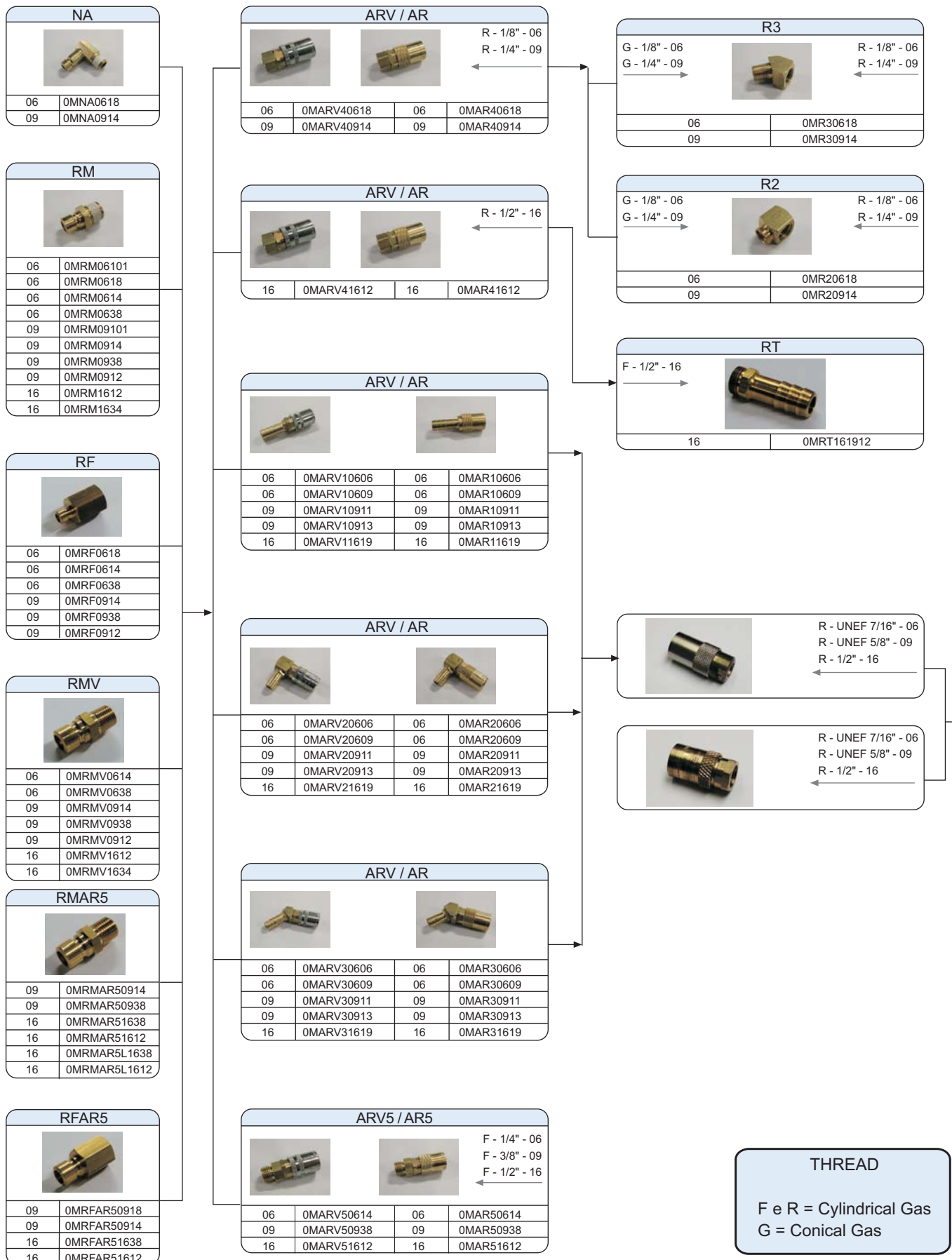


Selection chart		pag. B.2
Quick couplings	ARV / AR	pag. B.4
High pressure quick couplings	AR	pag. B.5
Connector plugs	RM / RF	pag. B.6
Angle nipples	NA	pag. B.6
Adapters	R	pag. B.7
Hose nipples	RT	pag. B.7
Pressure plugs	TC / TPE	pag. B.8
Extension pipes	RML	pag. B.8
Replacement parts for quick couplings		pag. B.9
Brass plug baffles	TCL	pag. B.10
Cascade water junctions	FF	pag. B.11
Cascade water junctions	WF	pag. B.12
Extension pipes	PZ	pag. B.12
Heat transfer rods	HTR	pag. B.13

The quotes indicated in this catalogue are expressed in mm, with the exception of when various indicated.

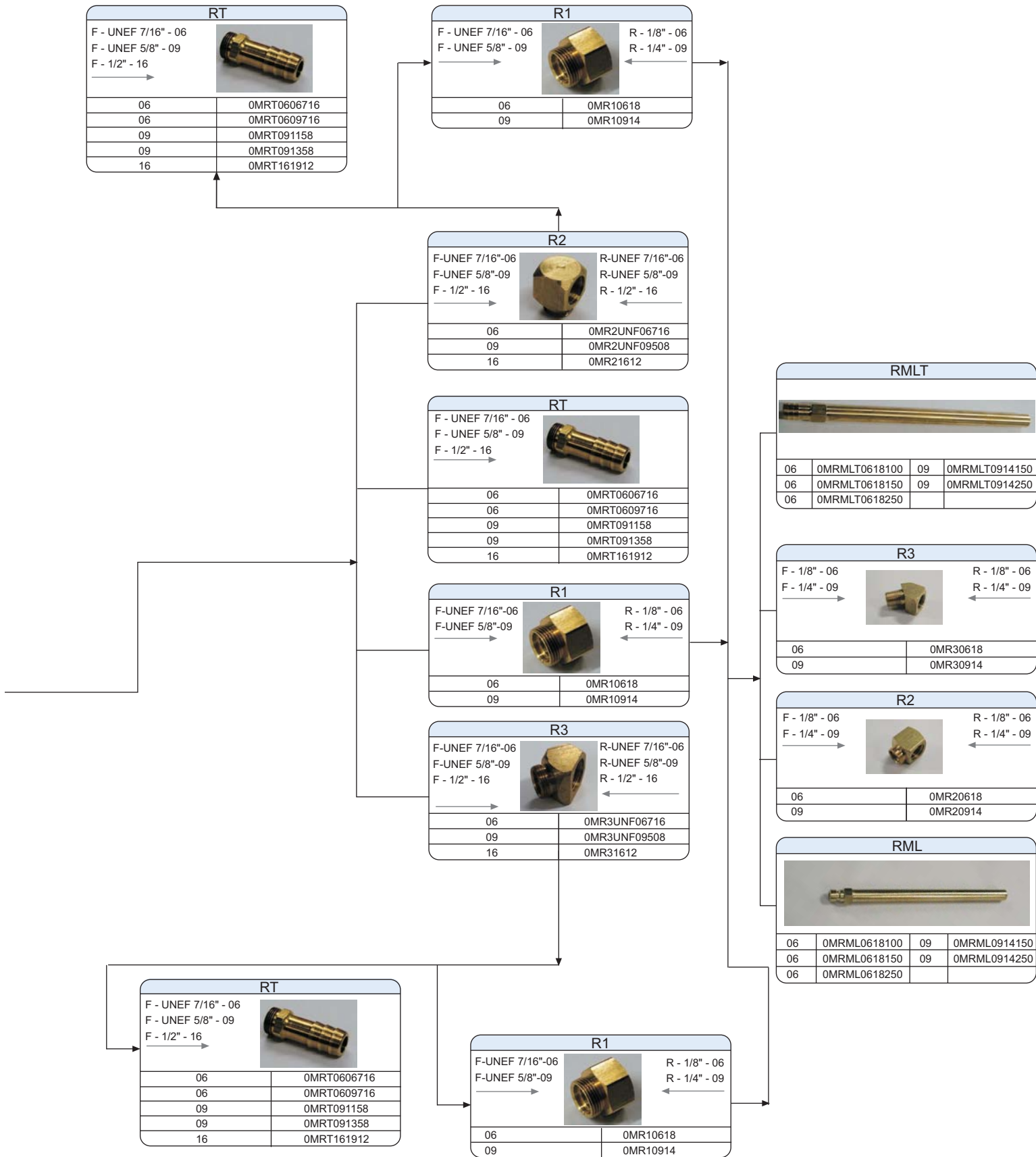
Selection chart



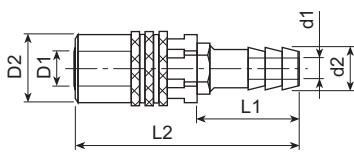
THREAD

F e R = Cylindrical Gas
G = Conical Gas

Selection chart



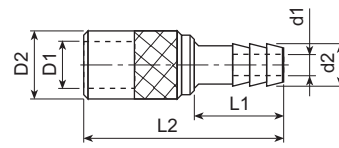
Quick coupling with valve ARV1 (0°)



Material: Brass-stainless steel

Ref.	D1	d1	d2	D2	L1	L2	Serie
OMARV10606	9	5	7,3	17,0	27	57	06
OMARV10609	9	6	10,5	17,0	27	57	06
OMARV10911	13	9	12,2	22,6	27	68	09
OMARV10913	13	9	14,0	22,6	27	68	09
OMARV11619	20	16	20,0	30,0	46	103	16

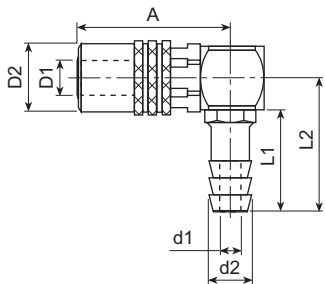
Quick coupling AR1 (0°)



Material: Brass-stainless steel

Ref.	D1	d1	d2	D2	L1	L2	Serie
OMAR10606	9	5	7,3	17,0	25	52	06
OMAR10609	9	6	10,5	17,0	25	52	06
OMAR10911	13	9	12,2	22,6	25	62	09
OMAR10913	13	9	14,0	22,6	25	62	09
OMAR11619	20	16	20,0	30,0	32	77	16

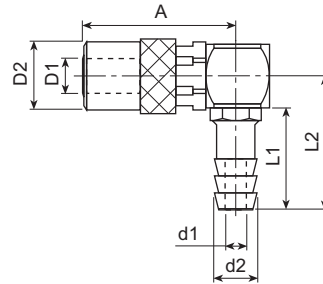
Quick coupling with valve ARV2 (90°)



Material: Brass-stainless steel

Ref.	D1	d1	d2	D2	A	L1	L2	Serie
OMARV20606	9	5	7,3	17,0	38	27	34	06
OMARV20609	9	6	10,5	17,0	38	27	34	06
OMARV20911	13	9	12,2	22,6	52	27	37	09
OMARV20913	13	9	14,0	22,6	52	27	37	09
OMARV21619	20	16	20,0	30,0	74	46	69	16

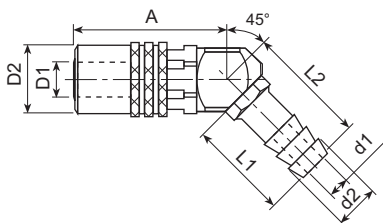
Quick coupling AR2 (90°)



Material: Brass-stainless steel

Ref.	D1	d1	d2	D2	A	L1	L2	Serie
OMAR20606	9	5	7,3	17,0	38	27	34	06
OMAR20609	9	6	10,5	17,0	38	27	34	06
OMAR20911	13	9	12,2	22,6	52	27	37	09
OMAR20913	13	9	14,0	22,6	52	27	37	09
OMAR21619	20	16	20,0	30,0	68	46	69	16

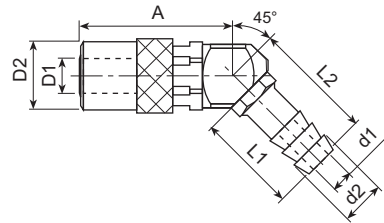
Quick coupling with valve ARV3 (45°)



Material: Brass-stainless steel

Ref.	D1	d1	d2	D2	A	L1	L2	Serie
OMARV30606	9	5	7,3	17,0	38	27	30	06
OMARV30609	9	6	10,5	17,0	38	27	30	06
OMARV30911	13	9	12,2	22,6	52	27	31	09
OMARV30913	13	9	14,0	22,6	52	27	31	09
OMARV31619	20	16	20,0	30,0	73	46	69	16

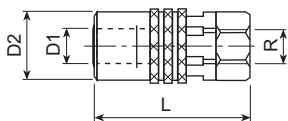
Quick coupling AR3 (45°)



Material: Brass-stainless steel

Ref.	D1	d1	d2	D2	A	L1	L2	Serie
OMAR30606	9	5	7,3	17,0	38	27	30	06
OMAR30609	9	6	10,5	17,0	38	27	30	06
OMAR30911	13	9	12,2	22,6	52	27	31	09
OMAR30913	13	9	14,0	22,6	52	27	31	09
OMAR31619	20	16	20,0	30,0	67	46	69	16

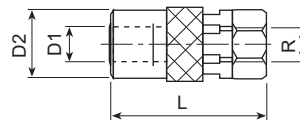
Quick coupling with valve ARV4 (0°)



Material: Brass-stainless steel

Ref.	D1	R	D2	L	Serie
0MARV40618	9	1/8"Gas	17,0	39	06
0MARV40914	13	1/4"Gas	22,6	53	09
0MARV41612	20	1/2"Gas	30,0	57	16

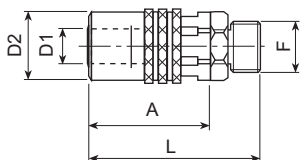
Quick coupling AR4 (0°)



Material: Brass-stainless steel

Ref.	D1	R	D2	L	Serie
0MAR40618	9	1/8"Gas	17,0	39	06
0MAR40914	13	1/4"Gas	22,6	53	09
0MAR41612	20	1/2"Gas	30,0	57	16

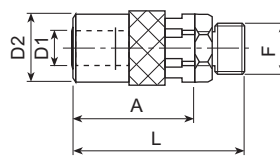
Quick coupling with valve ARV5 (0°)



Material: Brass-stainless steel

Ref.	D1	D2	A	L	F	Serie
0MARV50614	9	17,0	30,5	43	1/4"Gas	06
0MARV50938	13	22,6	41,0	57	3/8"Gas	09
0MARV51612	20	30,0	57,0	76	1/2"Gas	16

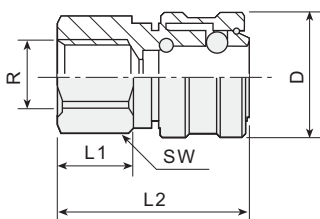
Quick coupling AR5 (0°)



Material: Brass-stainless steel

Ref.	D1	D2	A	L	F	Serie
0MAR50614	9	17,0	30,5	43	1/4"Gas	06
0MAR50938	13	22,6	41,0	57	3/8"Gas	09
0MAR51612	20	30,0	57,0	76	1/2"Gas	16

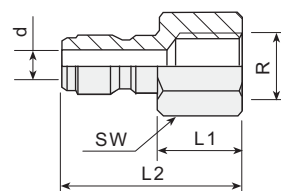
High pressure quick couplings AR6



Material: Brass-stainless steel

Ref.	L2	L1	D	SW	R	Serie	Bar*
0MAR6F06	37,2	14,4	24	21	1/4"Gas	A	350
0MAR6F09	40,6	19,4	29	26	3/8"Gas	B	180

Bar* = max. service pressure



Material: Brass-stainless steel

Ref.	L2	L1	d	SW	R	Serie	Bar*
0MAR6M06	35,6	16,5	6	18	1/4"Gas	A	350
0MAR6M09	41,3	19,1	9	21	3/8"Gas	B	180

Bar* = max. service pressure

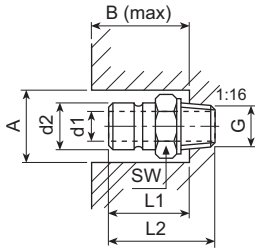
Notes about AR6

- Never disconnect under pressure
- Max. service temperature 205°C



Ref.	L
0MORAR6F06	A
0MORAR6F09	B

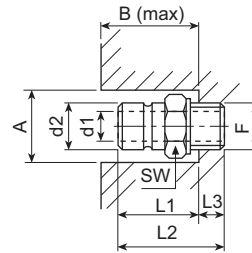
Connector plug with teflon seal RM



Material: Brass

Ref.	G	d2	d1	L2	SW	A	B	L1	Serie
OMRM06101	M10x1	9	6	23,0	13	22	18	17	06
OMRM0618	1/8"	9	6	24,0	13	22	18	17	06
OMRM0614	1/4"	9	6	29,0	16	26	20	19	06
OMRM0638	3/8"	9	6	30,0	19	30	22	21	06
OMRM09101	M10x1	13	6	29,5	16	26	26	25	09
OMRM0914	1/4"	13	9	34,0	16	26	26	25	09
OMRM0938	3/8"	13	9	34,0	19	30	28	26	09
OMRM0912	1/2"	13	9	39,0	24	37	28	26	09
OMRM1612	1/2"	20	16	44,0	22	32	38	37	16
OMRM1634	3/4"	20	16	45,0	29	38	40	38	16

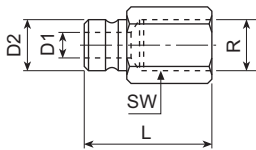
Connector plug for AR5 e ARV5



Material: Brass

Ref.	A	B	L1	d2	d1	SW	L3	L2	F	Serie
OMRMAR50914	30	22	20	13	9	16	14	34	1/4"	09
OMRMAR50938	30	22	20	13	9	19	14	34	3/8"	09
OMRMAR51638	32	25	25	20	15	22	15	40	3/8"	16
OMRMAR51612	32	25	25	20	15	22	20	45	1/2"	16
OMRMAR5L1638	32	25	25	20	15	22	28	53	3/8"	16
OMRMAR5L1612	32	25	25	20	15	22	29	54	1/2"	16

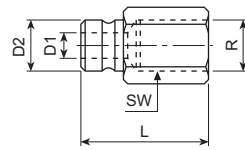
Connector plug RF



Material: Brass

Ref.	D2	D1	SW	L	R	Serie
OMRF0618	9	6	13	28	1/8"Gas	06
OMRF0614	9	6	16	32	1/4"Gas	06
OMRF0638	9	6	19	34	3/8"Gas	06
OMRF0914	13	9	16	37	1/4"Gas	09
OMRF0938	13	9	19	39	3/8"Gas	09
OMRF0912	13	9	24	46	1/2"Gas	09

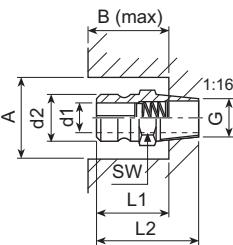
Connector plug for AR5 e ARV5



Material: Brass

Ref.	D2	D1	L	SW	R	Serie
OMRFAR50918	13	9	32	16	1/8"Gas	09
OMRFAR50914	13	9	37	19	1/4"Gas	09
OMRFAR51638	20	15	40	22	3/8"Gas	16
OMRFAR51612	20	15	45	24	1/2"Gas	16

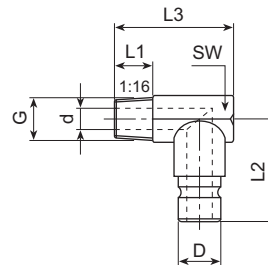
Shut-off connector plug for ARV



Material: Brass

Ref.	A	B	L1	d2	d1	SW	L2	G	Serie
OMRMV0614	28	21	20	9	6	16	29	1/4"	06
OMRMV0638	30	21	20	9	6	19	29,5	3/8"	06
OMRMV0914	28	21	20	13	9	16	34	1/4"	09
OMRMV0938	30	21	20	13	9	19	34	3/8"	09
OMRMV0912	37	28	26	13	9	24	37	1/2"	09
OMRMV1612	32	38	37	19,9	16	22	44,3	1/2"	16
OMRMV1634	38	40	38	19,9	16	29	45,0	3/4"	16

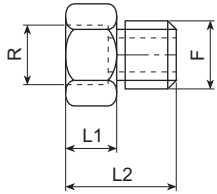
Angle Nipples NA (90°)



Material: Brass

Ref.	G	D	d	L3	L1	L2	SW	Serie
OMNA0618	1/8"	9	6	27	9	23,0	11	06
OMNA0914	1/4"	13	9	34	9	24,5	15	09

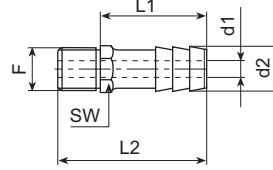
Adapters R1 (0°)



Material: Brass

Ref.	F	R	L2	L1	Serie
OMR10618	UNEF 7/16"-32	1/8"Gas	13	8	06
OMR10914	UNEF 5/8"-24	1/4"Gas	18	11	09

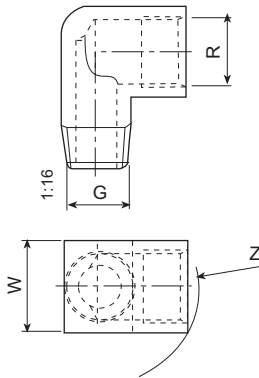
Hose nipples RT



Material: Brass

Ref.	F	d1	d2	L2	L1	SW	Serie
OMRT0606716	UNEF7/16"-32	5	6	32	27	11	06
OMRT0609716	UNEF7/16"-32	6	9	32	27	11	06
OMRT091158	UNEF5/8"-24	9	11	33	27	16	09
OMRT091358	UNEF5/8"-24	9	13	33	27	16	09
OMRT161912	1/2"Gas-14	16	19	56	46	22	16

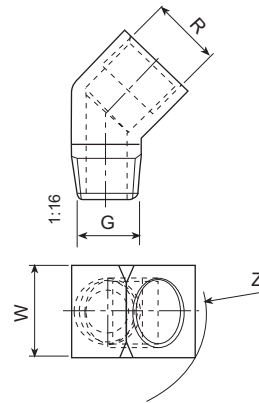
90° BSP Elbows R2



Material: Brass

Ref.	G / R	W	Z	Serie
OMR20618	1/8"Gas	13	13	06
OMR20914	1/4"Gas	18	16	09
OMR2NPT0618	1/8"NPT	-	-	-
OMR2NPT0914	1/4"NPT	-	-	-
OMR2NPT1612	1/2"NPT	-	-	-

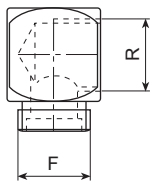
45° BSP Elbows R3



Material: Brass

Ref.	G / R	W	Z	Serie
OMR30618	1/8"Gas	13	13	06
OMR30914	1/4"Gas	18	16	09
OMR3NPT0618	1/8"NPT	-	-	-
OMR3NPT0914	1/4"NPT	-	-	-
OMR3NPT1612	1/2"NPT	-	-	-

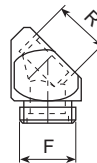
90° Angles R2



Material: Brass

Ref.	F / R	Serie
OMR2UNF06716	UNEF 7/16"-32	06
OMR2UNF09508	UNEF 5/8"-24	09
OMR21612	1/2"Gas	16

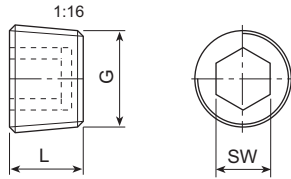
45° Angles R3



Material: Brass

Ref.	F / R	Serie
OMR3UNF06716	UNEF 7/16"-32	06
OMR3UNF09508	UNEF 5/8"-24	09
OMR31612	1/2"Gas	16

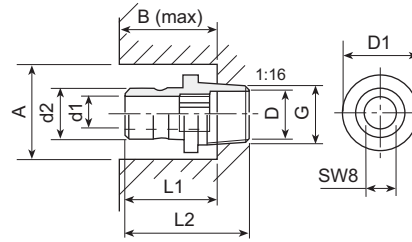
Pressure plugs TC



Material: Brass

Ref.	G	L	SW
0MTC101	M10X1	8	5
0MTC18	1/8"Gas	8	5
0MTC14	1/4"Gas	10	7
0MTC38	3/8"Gas	10	8
0MTC12	1/2"Gas	10	10
0MTC34	3/4"Gas	-	-

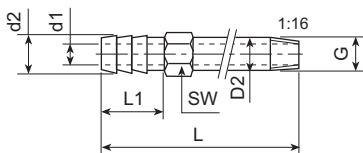
Connector plug with inner hexagon R0EI



Material: Brass

Ref.	A	B	L1	d2	d1	D1	L2	G	Serie
0MR0EI0938	30	28	26	13	9	21	34	3/8"	09

Brass extension pipes RMLT

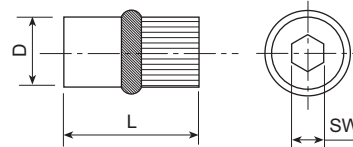


Material: Brass

Ref.	G	L	L1	SW	d1	d2	D2	Serie
0MRMLT0618100 (*)	1/8"Gas	100	17	11	6	9	10	06
0MRMLT0618150	1/8"Gas	150	17	11	6	9	10	06
0MRMLT0618250	1/8"Gas	250	17	11	6	9	10	06
0MRMLT0914150 (*)	1/4"Gas	150	25	15	9	13	14	09
0MRMLT0914250	1/4"Gas	250	25	15	9	13	14	09

(*) = with thread + teflon seal, the other items without thread

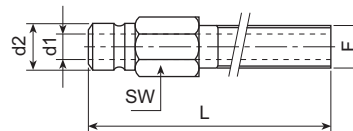
Threadless brass pressure plugs TPE



Material: Brass

Ref.	D	L	SW
0MTPE08	8	12,7	2,5
0MTPE10	10	14,2	3
0MTPE12	12	14,2	3
0MTPE16	16	15,7	3

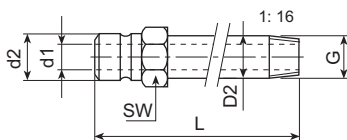
Extension pipes RMLC



Material: Brass

Ref.	F	L	SW	d1	d2	Serie
0MRMLC0618100	1/8"Gas	100	12	6,3	9	06
0MRMLC0618150	1/8"Gas	150	12	6,3	9	06
0MRMLC0618200	1/8"Gas	200	12	6,3	9	06
0MRMLC0614100	1/4"Gas	100	15	6,3	9	06
0MRMLC0614150	1/4"Gas	150	15	6,3	9	06
0MRMLC0614200	1/4"Gas	200	15	6,3	9	06
0MRMLC0638100	3/8"Gas	100	18	6,3	9	06
0MRMLC0638150	3/8"Gas	150	18	6,3	9	06
0MRMLC0638200	3/8"Gas	200	18	6,3	9	06
0MRMLC0918100	1/8"Gas	100	15	6,3	13	09
0MRMLC0918150	1/8"Gas	150	15	6,3	13	09
0MRMLC0918200	1/8"Gas	200	15	6,3	13	09
0MRMLC0914100	1/4"Gas	100	15	9,5	13	09
0MRMLC0914150	1/4"Gas	150	15	9,5	13	09
0MRMLC0914200	1/4"Gas	200	15	9,5	13	09
0MRMLC0938100	3/8"Gas	100	18	9,5	13	09
0MRMLC0938150	3/8"Gas	150	18	9,5	13	09
0MRMLC0938200	3/8"Gas	200	18	9,5	13	09

Brass extension pipes RML



Material: Brass

Ref.	G	L	SW	d1	d2	D2	Serie
0MRML0618100 (*)	1/8"Gas	100	11	6	9	10	06
0MRML0618150	1/8"Gas	150	11	6	9	10	06
0MRML0618250	1/8"Gas	250	11	6	9	10	06
0MRML0914150 (*)	1/4"Gas	150	15	9	13	14	09
0MRML0914250	1/4"Gas	250	15	9	13	14	09

(*) = with thread + teflon seal, the other items without thread

Replacement parts for quick couplings

Retainer rings for AR / ARV



Ref.	Serie
0MADT06	06
0MADT09	09
0MADT16	16

Stainless steel balls for AR / ARV



Material: Stainless inox

Ref.	Serie
0MSDA06	06
0MSDA09	09
0MSDA16	16

Collar springs for AR / ARV



Ref.	Serie
0MMOL06	06
0MMOL09	09
0MMOL16	16

Silicone seals for AR / ARV

Max temperature working: 234°C



Material: Silicone

Ref.	Serie
0MGUS06	06
0MGUS09	09
0MGUS16	16

Valves + springs for ARV



Ref.	Serie
0MVEM06	06
0MVEM09	09
0MVEM16	16

Viton seals for AR / ARV

Max temperature working: 204°C



Material: Viton

Ref.	Serie
0MGUV06	06
0MGUV09	09
0MGUV16	16

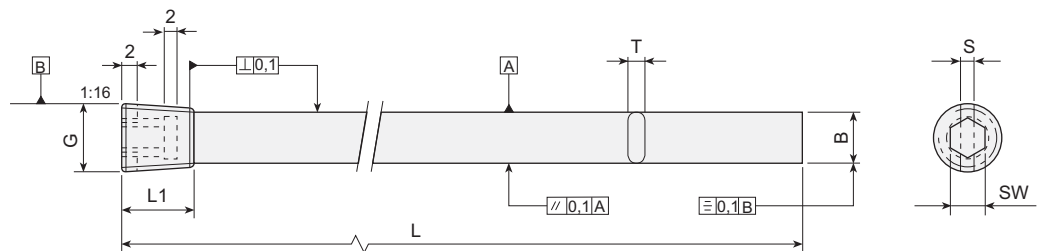
Accessories

Ref.	Serie
0MPAFU	Adhesives for UNEF thread
0MNTG06	Teflon Sealing tapes (thickness 06 mm)
0MKRG	Quick coupling seal removal tool kit

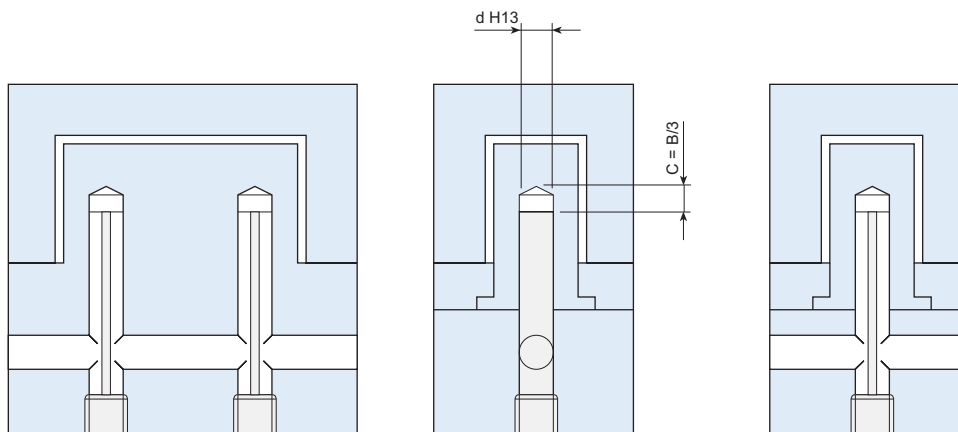
Quick coupling seal removal tool kit



Material: Brass



Ref.	G	SW	B	L	L1	T	S	d
0MTCL18100	1/8"Gas	5	8,2	100	8	1,6	2	8,5
0MTCL18200	1/8"Gas	5	8,2	200	8	1,6	2	8,5
0MTCL14125	1/4"Gas	7	11,2	125	10	2,4	3	11,5
0MTCL14250	1/4"Gas	7	11,2	250	10	2,4	3	11,5
0MTCL38150	3/8"Gas	8	14,7	150	10	2,4	3	15,0
0MTCL38300	3/8"Gas	8	14,7	300	10	2,4	3	15,0
0MTCL12200	1/2"Gas	10	18,2	200	10	2,4	3	18,5
0MTCL12400	1/2"Gas	10	18,2	400	10	2,4	3	18,5
0MTCL34300	3/4"Gas	12	23,2	300	12	3,2	3	23,5
0MTCL34500	3/4"Gas	12	23,2	500	12	3,2	3	23,5

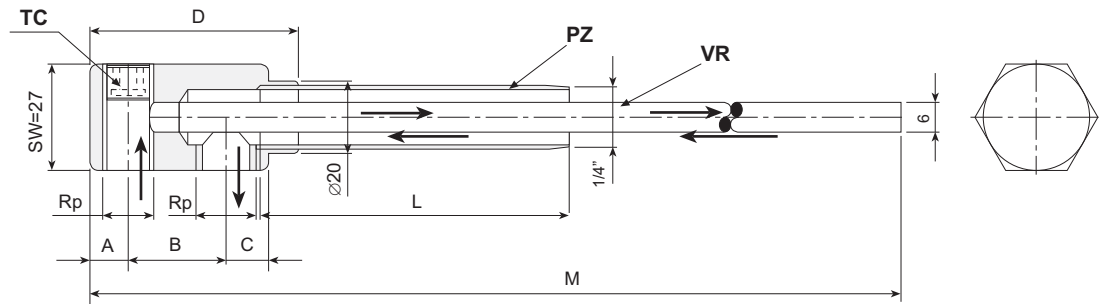


Note:

A drilled hole (finish d^{H13}) is adequate.
Do not ream the hole.

Type FF - with extension

Material: Brass

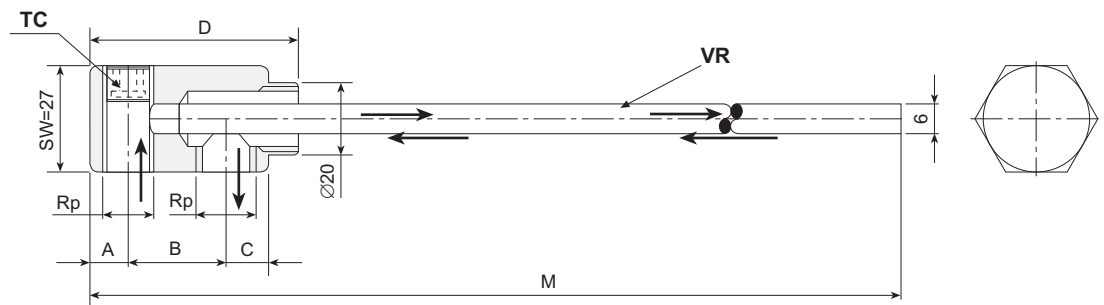


Ref.	Rp	M	A	B	D	C	L
OLFF48050	1/8"	356	9	19	42	9	50
OLFF48100	1/8"	356	9	19	42	9	100
OLFF48150	1/8"	356	9	19	42	9	150
OLFF48200	1/8"	356	9	19	42	9	200
OLFF44050	1/4"	356	9	19	42	9	50
OLFF44100	1/4"	356	9	19	42	9	100
OLFF44150	1/4"	356	9	19	42	9	150
OLFF44200	1/4"	356	9	19	42	9	200

Ref.	Rp	M	A	B	D	C	L
OLFF58050	1/8"	362	9	26	54	12	50
OLFF58100	1/8"	362	9	26	54	12	100
OLFF58150	1/8"	362	9	26	54	12	150
OLFF58200	1/8"	362	9	26	54	12	200
OLFF54050	1/4"	362	9	26	54	12	50
OLFF54100	1/4"	362	9	26	54	12	100
OLFF54150	1/4"	362	9	26	54	12	150
OLFF54200	1/4"	362	9	26	54	12	200

Type FF - without extension

Material: Brass



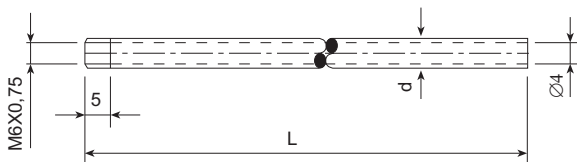
Ref.	Rp	M	A	B	D	C
OLFF48	1/8"	356	9	19	42	9
OLFF44	1/4"	356	9	19	42	9

Ref.	Rp	M	A	B	D	C
OLFF58	1/8"	362	9	26	54	12
OLFF54	1/4"	362	9	26	54	12

Spare Parts for Cascade water junction FF

Feed pipes FR

Material: Brass



Ref.	d	L
23FR6X340	6	340

Pressure plugs TC

Ref.
0MTC18
0MTC14

Pls see page B.8

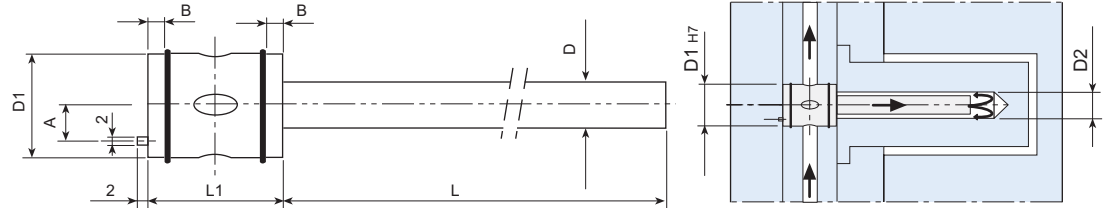
Extension pipes PZ

Ref.
OMPZ14X050
OMPZ14X100
OMPZ14X150
OMPZ14X200

Pls see page B.12

Cascade water junctions WF

Tube material: steel nickel plated
Cylinder material: brass nickel plated



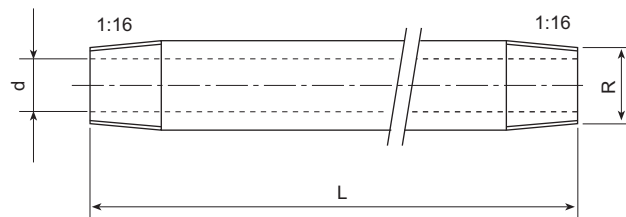
Ref. example: 0MWF10080160

Ref.	D1	D	L	D2	L1	A	B
WF 10	0,80	x 160		1,0 - 1,4	15	3,0	1,1
WF 10	1,25	x 160		1,5 - 2,0	15	3,0	1,1
WF 10	1,65	x 160		2,0 - 3,0	15	3,0	1,1
WF 10	2,45	x 160		3,0 - 4,0	15	3,0	1,1
WF 10	2,95	x 160		4,0 - 5,0	15	3,0	1,1
WF 16	0,80	x 160		1,0 - 1,4	20	5,5	2,2
WF 16	0,80	x 300		1,0 - 1,4	20	5,5	2,2
WF 16	1,25	x 160		1,5 - 2,0	20	5,5	2,2
WF 16	1,25	x 300		1,5 - 2,0	20	5,5	2,2
WF 16	1,65	x 160		2,0 - 3,0	20	5,5	2,2
WF 16	1,65	x 300		2,0 - 3,0	20	5,5	2,2
WF 16	2,45	x 160		3,0 - 4,0	20	5,5	2,2
WF 16	2,45	x 300		3,0 - 4,0	20	5,5	2,2

Ref.	D1	D	L	D2	L1	A	B
WF 16	2,95	x 160		4,0 - 5,0	20	5,5	2,2
WF 16	2,95	x 300		4,0 - 5,0	20	5,5	2,2
WF 16	3,15	x 160		4,0 - 5,0	20	5,5	2,2
WF 16	3,15	x 300		4,0 - 5,0	20	5,5	2,2
WF 25	3,95	x 160		5,5 - 6,5	30	9,8	3,4
WF 25	3,95	x 300		5,5 - 6,5	30	9,8	3,4
WF 25	4,95	x 160		6,5 - 8,0	30	9,8	3,4
WF 25	4,95	x 300		6,5 - 8,0	30	9,8	3,4
WF 25	5,95	x 160		8,0 - 10,0	30	9,8	3,4
WF 25	5,95	x 300		8,0 - 10,0	30	9,8	3,4
WF 25	7,95	x 160		10,0 - 12,0	30	9,8	3,4
WF 25	7,95	x 300		10,0 - 12,0	30	9,8	3,4

Extension pipes PZ

Material: zinc plated



Ref.	R	d	L
OMPZ18X050	1/8"	6	50
OMPZ18X100	1/8"	6	100
OMPZ18X150	1/8"	6	150
OMPZ18X200	1/8"	6	200
OMPZ14X050	1/4"	9	50
OMPZ14X100	1/4"	9	100

Ref.	R	d	L
OMPZ14X150	1/4"	9	150
OMPZ14X200	1/4"	9	200
OMPZ38X100	3/8"	12	100
OMPZ38X150	3/8"	12	150
OMPZ38X200	3/8"	12	200

Note:

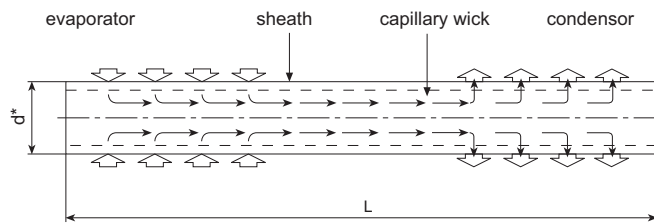
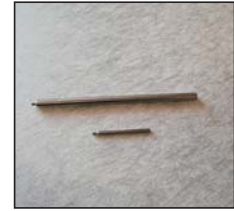
Specials upon request

The heat transfer rods are thin pipes with high heat conductivity. They can transfer a thermal energy through a process of vaporisation / condensation. This process is showed in the drawing here beside. The process is characterized by two phases, a liquid phase and a vapour phase, that generate a heat flow from one extremity to the other of the heat pipe.

HTR - HTRH
Heat transfer rods



HTRF - HTRHF
Threaded heat transfer rods

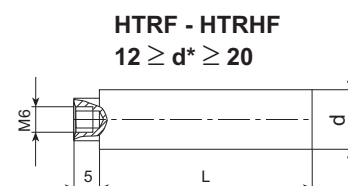
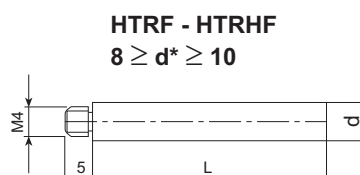
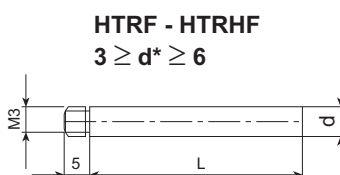


$$d^* = \begin{cases} d_{0,1}^0 & \text{se } d \leq 12 \\ d_{0,2}^0 & \text{se } d > 12 \end{cases}$$

Ref.	d	L
HTR	2	50
HTR	2	75
HTR	2	100
HTR	2	125
HTR	2,5	50
HTR	2,5	75
HTR	2,5	100
HTR	2,5	125
HTR/HTRH	3	50
HTR/HTRH	3	75
HTR/HTRH	3	100
HTR/HTRH	3	125
HTR/HTRH	3	150
HTR/HTRH	3	200
HTR/HTRH	4	50
HTR/HTRH	4	75
HTR/HTRH	4	100
HTR/HTRH	4	125
HTR/HTRH	4	150
HTR/HTRH	4	200
HTR/HTRH	4	250

Ref.	d	L
HTR/HTRH	5	50
HTR/HTRH	5	75
HTR/HTRH	5	100
HTR/HTRH	5	125
HTR/HTRH	5	150
HTR/HTRH	5	200
HTR/HTRH	5	250
HTR/HTRH	6	50
HTR/HTRH	6	75
HTR/HTRH	6	100
HTR/HTRH	6	125
HTR/HTRH	6	150
HTR/HTRH	6	200
HTR/HTRH	6	250
HTR/HTRH	8	100
HTR/HTRH	8	125
HTR/HTRH	8	150
HTR/HTRH	8	200
HTR/HTRH	8	250
HTR/HTRH	8	300

Ref.	d	L
HTR/HTRH	10	100
HTR/HTRH	10	125
HTR/HTRH	10	150
HTR/HTRH	10	200
HTR/HTRH	10	250
HTR/HTRH	10	300
HTR/HTRH	12	100
HTR/HTRH	12	125
HTR/HTRH	12	150
HTR/HTRH	12	200
HTR/HTRH	12	250
HTR/HTRH	12	300
HTR/HTRH	16	100
HTR/HTRH	16	125
HTR/HTRH	16	150
HTR/HTRH	16	200
HTR/HTRH	16	250
HTR/HTRH	16	300
HTR/HTRH	20	100
HTR/HTRH	20	125
HTR/HTRH	20	150
HTR/HTRH	20	200
HTR/HTRH	20	250
HTR/HTRH	20	300



The service temperature for the heat transfer rods is:

- from 5°C to 250°C for HTR (standard heat pipes) and HTRF (standard threaded heat pipes)
- from 150°C to 500°C for HTRH (high temperature heat pipes) e HTRHF (high temperature threaded heat pipes)

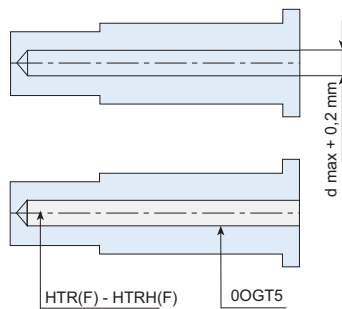
The service temperature graph allows to define the needed heat pipe (standard or high temperature).

Advantages:

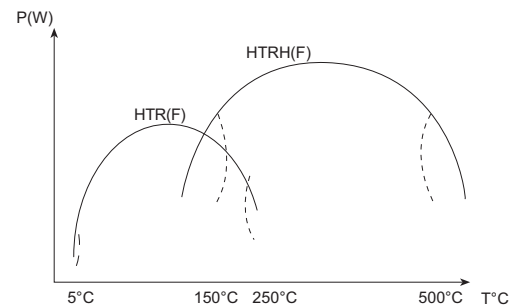
- lower cost tool design
- lower cost mould construction
- reduced tool maintenance
- faster cycles, thanks to cooling time reduction
- high cooling capacity
- low thermal inertia
- eliminates thermal stress
- reduces sink marks
- suitable for use with all polymers

For a precise installation, the core should be drilled at the nominal heat pipe diameter + 0,10 mm. Do not ream the hole. The heat pipe should be fitted into the seat using our high conductivity grease (Ref.: 0OGT5) to assure the best contact of the surfaces and an optimal heat transfer.

Installation



Service temperature



Ref. example: 0GHTR060075 or 0GHTRF060075
0GHTRH060075 or 0GHTRHF060075