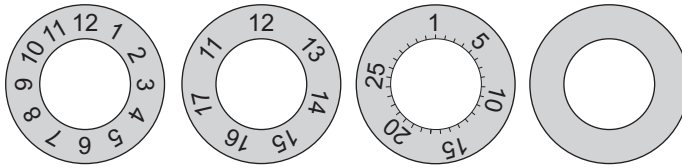


Date stamps standard	CC / IC	pag. A.2
Date stamps long	CL / IL	pag. A.3
Date stamps compact	CS / IS	pag. A.4
Special date stamps	SPEC	pag. A.5
Recycling inserts	IRM	pag. A.6
Air valves	VA / VE	pag. A.8
Tapered Interlocks	FTMT	pag. A.9
Straight Interlocks	CPS	pag. A.10
Quick return coupling	AR	pag. A.11
Slide retainers	SR	pag. A.12
Guiding Rails	PGX / PGZ	pag. A.13
Guiding Rails	CX / CZ	pag. A.13
Guiding Rails	GLX / GLZ	pag. A.14
Guiding Rails	GTX / GTZ	pag. A.14

The quotes indicated in this catalogue are expressed in mm, with the exception of when various indicated.

OUTER INSERT



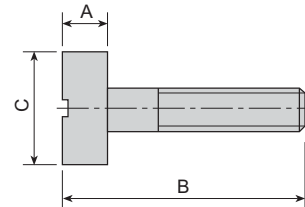
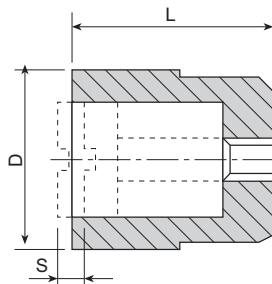
INNER INSERT

Mirror images



D	Item Nr.	Item Nr.	Item Nr.	Item Nr.
04	0FCCM04	0FCCA042017	0FCCG04*	0FCCN04
05	0FCCM05	0FCCA052017	0FCCG05*	0FCCN05
06	0FCCM06	0FCCA062017	0FCCG06	0FCCN06
08	0FCCM08	0FCCA082017	0FCCG08	0FCCN08
10	0FCCM10	0FCCA102017	0FCCG10	0FCCN10
12	0FCCM12	0FCCA122017	0FCCG12	0FCCN12
16	0FCCM16	0FCCA162017	0FCCG16	0FCCN16
20	0FCCM20	0FCCA202017	0FCCG20	0FCCN20

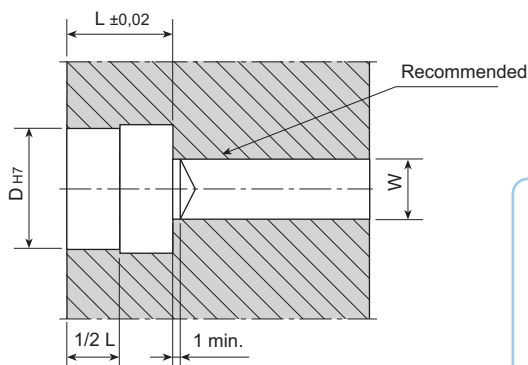
D	Item Nr.	Item Nr.
04	0FICA042011	0FICN04
05	0FICA062011**	0FICN06**
06	0FICA062011	0FICN06
08	0FICA082011	0FICN08
10	0FICA102011	0FICN10
12	0FICA122011	0FICN12
16	0FICA162011	0FICN16
20	0FICA202011	0FICN20



D	L	S	W
4	8	0,25	1,4
5	8	0,20	2
6	8	0,20	2
8	10	0,25	3
10	12	0,35	3
12	14	0,35	4
16	14	0,35	5
20	16	0,35	5

A	B	C
2	8	2,2
2	8	3,1
2	8	3,1
2,5	10	4,4
3	12	5,2
3	14	6,2
3,5	14	8,2
4,5	16	11

Installation



Note:

Inner insert front removable from outer insert.
The outer insert and the inner insert must be ordered separately, in order to obtain the needed product.
The installation and the positioning of the inner insert must be done with a screwdriver.

Material: tempered steel, hardened 50/55 HRC.

Max service temperature: 140°C.

All inner inserts will be furnished with spring.

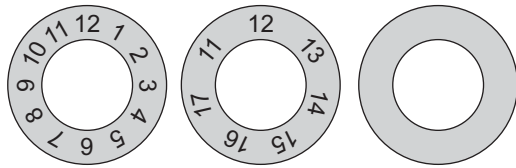
* = 0FCCG04 and 0FCCG05 have only the numbers

** = even for outer insert with $\varnothing 5$

All outer inserts 0FCCA have 7 years validity.

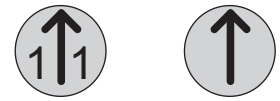
Made in Italy

OUTER INSERT



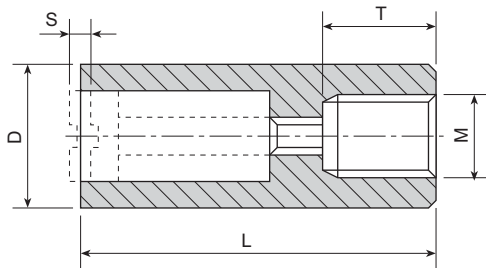
Mirror images

INNER INSERT

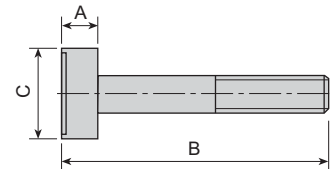


D	Item Nr.	Item Nr.	Item Nr.
05	0FCLM05	0FCLA052017	0FCLN05
06	0FCLM06	0FCLA062017	0FCLN06
08	0FCLM08	0FCLA082017	0FCLN08
10	0FCLM10	0FCLA102017	0FCLN10
12	0FCLM12	0FCLA122017	0FCLN12
16	0FCLM16	0FCLA162017	0FCLN16

D	Item Nr.	Item Nr.
05*	0FILA062011	0FILN06
06	0FILA062011	0FILN06
08	0FILA082011	0FILN08
10	0FILA102011	0FILN10
12	0FILA122011	0FILN12
16	0FILA162011	0FILN16

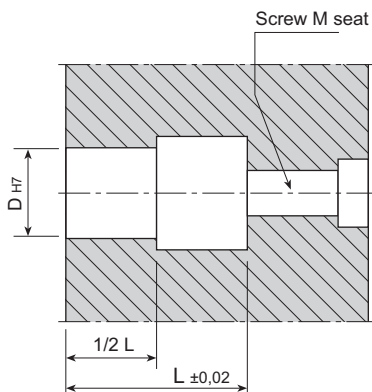


D	L	M	T	S
5	17	M3	3,5	0,20
6	17	M3	3,5	0,20
8	20	M4	4	0,35
10	20	M5	4	0,35
12	25	M6	6	0,50
16	33	M8	8	0,60



A	B	ØC
3	13	3,1
3	13	3,1
4	14	4,6
4	14	4,6
4	17	6,4
5	23	8,4

Installation



Note:

Inner insert front removable from outer insert.
 The outer insert and the inner insert must be ordered separately, in order to obtain the needed product.
 The installation and the positioning of the inner insert must be done with a screwdriver.

Material: tempered steel, hardened 50/55 HRC.
 Max service temperature: 140°C.

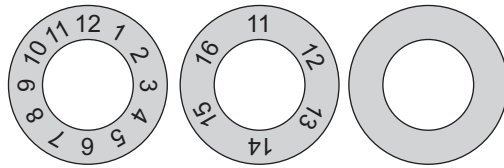
All inner inserts will be furnished with spring.

* = even for outer insert with Ø 5

All outer inserts 0FCLA have 7 years validity.

Made in Italy

OUTER INSERT



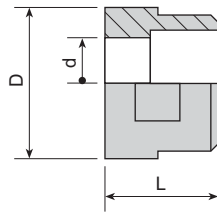
D	Item Nr.	Item Nr.	Item Nr.
06	0FCSM06	0FCSA062016	0FCSN06
08	0FCSM08	0FCSA082016	0FCSN08
10	0FCSM10	0FCSA102016	0FCSN10
16	0FCSM16	0FCSA162016	0FCSN16
20	0FCSM20	0FCSA202016	0FCSN20

INNER INSERT

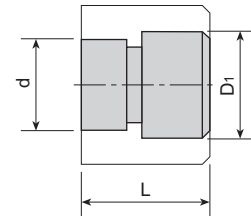
Mirror images



D	Item Nr.	Item Nr.
06	0FISA062011	0FISN06
08	0FISA082011	0FISN08
10	0FISA102011	0FISN10
16	0FISA162011	0FISN16
20	0FISA202011	0FISN20

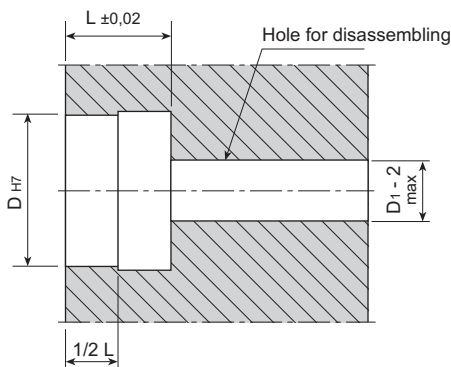


D	d	L
6	2,8	8
8	4	10
10	5	12
16	10	14
20	12	16



d	D1	L
2,8	4	8
4	5,6	10
5	6,5	12
10	12	14
12	14	16

Installation



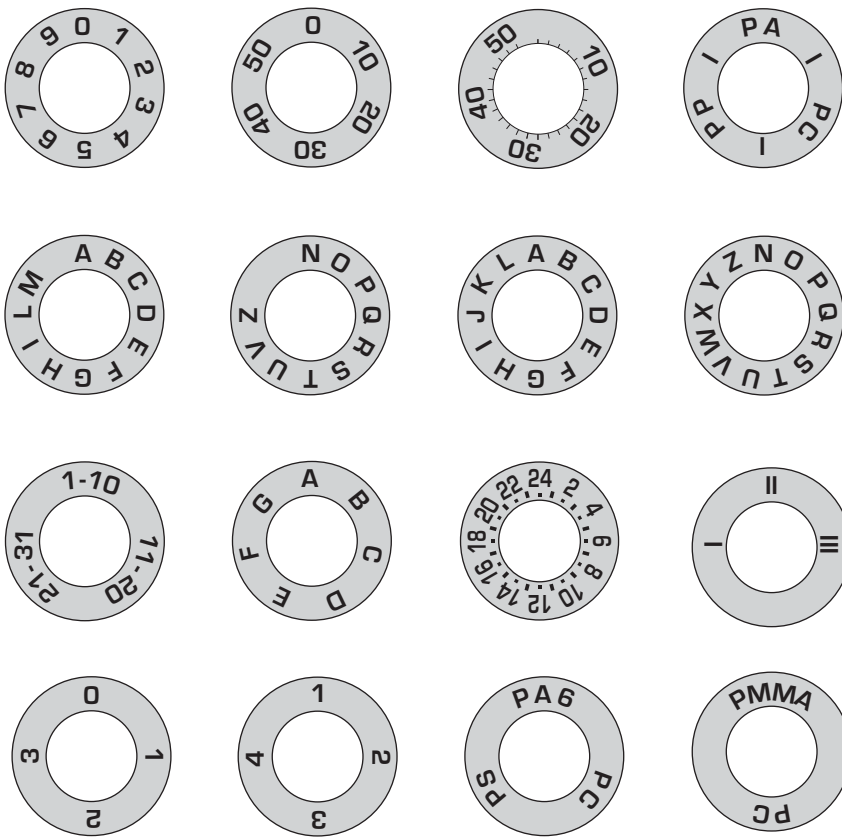
Note:

Indexable date stamps.
 Inner insert back removable from outer insert.
 The outer insert and the inner insert must be ordered separately, in order to obtain the needed product.
 The positioning of the inner insert must be done with a screwdriver.

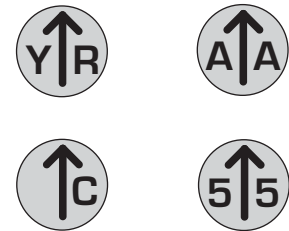
Material: tempered steel, hardened 50/55 HRC.
 Max service temperature: 140°C.
 All outer inserts 0FCSA have 6 years validity.

Made in Italy

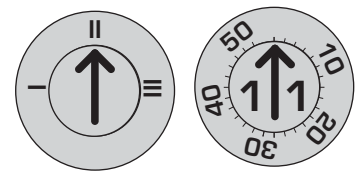
EXAMPLES OF SPECIAL OUTER INSERT



EXAMPLE OF SPECIAL INNER INSERT



EXAMPLE OF COMPOSITION



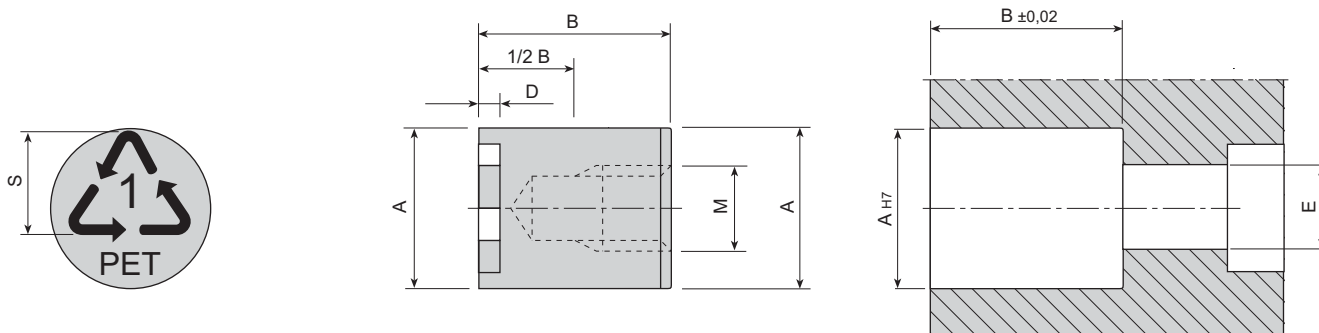
Note:

Upon request date stamps with special engraving can be realized. In this page are showed some samples. In case of order it is necessary to send us a sketch with the needed engraving and specify:

- outer insert or inner insert
- date stamps standard, long, compact
- outside diameter

Material: tempered steel, hardened 50/55 HRC.

Made in Italy



∅A	B	D	∅E	M	S
6	12	0,2	3,5	M3	3,6
8	12	0,2	4,5	M4	4,8
10	12	0,3	5,5	M5	6
16	14	0,3	6,5	M6	10
20	16	0,3	6,5	M6	12
25(*)	16	0,3	6,5	M6	15

Mirror images	Item Nr.	A	Mirror images	Item Nr.	A
	0IIRM0600UN	6		0IIRM0604GE	6
	0IIRM0800UN	8		0IIRM0804GE	8
	0IIRM1000UN	10		0IIRM1004GE	10
	0IIRM1600UN	16		0IIRM1604GE	16
	0IIRM2000UN	20		0IIRM2004GE	20
	0IIRM0601GE	6		0IIRM0604FR	6
	0IIRM0801GE	8		0IIRM0804FR	8
	0IIRM1001GE	10		0IIRM1004FR	10
	0IIRM1601GE	16		0IIRM1604FR	16
	0IIRM2001GE	20		0IIRM2004FR	20
	0IIRM0602UN	6		0IIRM0605UN	6
	0IIRM0802UN	8		0IIRM0805UN	8
	0IIRM1002UN	10		0IIRM1005UN	10
	0IIRM1602UN	16		0IIRM1605UN	16
	0IIRM2002UN	20		0IIRM2005UN	20
	0IIRM0602GE	6		0IIRM0606UN	6
	0IIRM0802GE	8		0IIRM0806UN	8
	0IIRM1002GE	10		0IIRM1006UN	10
	0IIRM1602GE	16		0IIRM1606UN	16
	0IIRM2002GE	20		0IIRM2006UN	20
	0IIRM0603GE	6		0IIRM0607UN	6
	0IIRM0803GE	8		0IIRM0807UN	8
	0IIRM1003GE	10		0IIRM1007UN	10
	0IIRM1603GE	16		0IIRM1607UN	16
	0IIRM2003GE	20		0IIRM2007UN	20
	0IIRM0604UN	6		0IIRM0607GE	6
	0IIRM0804UN	8		0IIRM0807GE	8
	0IIRM1004UN	10		0IIRM1007GE	10
	0IIRM1604UN	16		0IIRM1607GE	16
	0IIRM2004UN	20		0IIRM2007GE	20



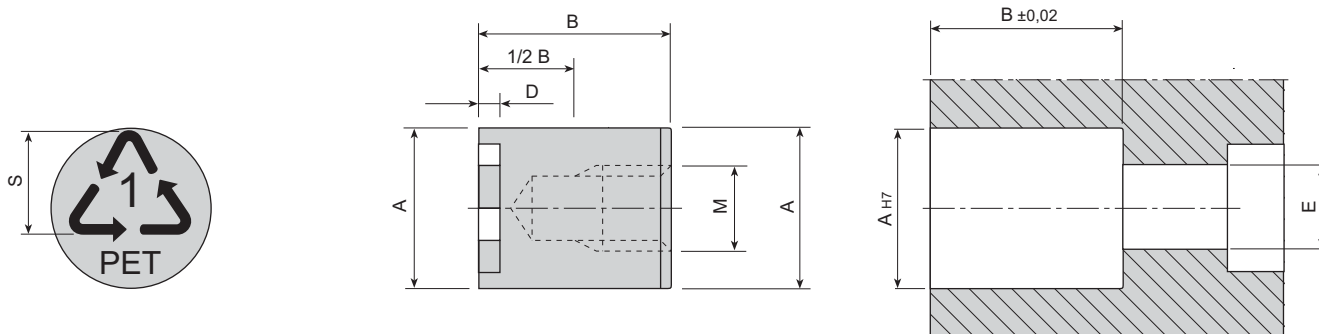
Note:

The recycling inserts are components that allow to obtain a specific characterization of the moulded product. Upon request recycling inserts with special engraving can be realized. In case of order it is necessary to send us a sketch with the needed engraving and specify the outside diameter.

Material: Stainless Steel, hardened 48-52 HRC.

(*) Available upon request

Made in Italy



∅A	B	D	∅E	M	S
6	12	0,2	3,5	M3	3,6
8	12	0,2	4,5	M4	4,8
10	12	0,3	5,5	M5	6
16	14	0,3	6,5	M6	10
20	16	0,3	6,5	M6	12
25(*)	16	0,3	6,5	M6	15

Mirror images	Item Nr.	A	Mirror images	Item Nr.	A
	0IIRM0610UN	6		0IIRM0623UN	6
	0IIRM0810UN	8		0IIRM0823UN	8
	0IIRM1010UN	10		0IIRM1023UN	10
	0IIRM1610UN	16		0IIRM1623UN	16
	0IIRM2010UN	20		0IIRM2023UN	20
	0IIRM0611UN	6		0IIRM0624UN	6
	0IIRM0811UN	8		0IIRM0824UN	8
	0IIRM1011UN	10		0IIRM1024UN	10
	0IIRM1611UN	16		0IIRM1624UN	16
	0IIRM2011UN	20		0IIRM2024UN	20
	0IIRM0612UN	6		0IIRM0625UN	6
	0IIRM0812UN	8		0IIRM0825UN	8
	0IIRM1012UN	10		0IIRM1025UN	10
	0IIRM1612UN	16		0IIRM1625UN	16
	0IIRM2012UN	20		0IIRM2025UN	20
	0IIRM0621UN	6		0IIRM0626UN	6
	0IIRM0821UN	8		0IIRM0826UN	8
	0IIRM1021UN	10		0IIRM1026UN	10
	0IIRM1621UN	16		0IIRM1626UN	16
	0IIRM2021UN	20		0IIRM2026UN	20
	0IIRM0622UN	6		0IIRM0627UN	6
	0IIRM0822UN	8		0IIRM0827UN	8
	0IIRM1022UN	10		0IIRM1027UN	10
	0IIRM1622UN	16		0IIRM1627UN	16
	0IIRM2022UN	20		0IIRM2027UN	20
	0IIRM0629UN	6		0IIRM0628UN	6
	0IIRM0829UN	8		0IIRM0828UN	8
	0IIRM1029UN	10		0IIRM1028UN	10
	0IIRM1629UN	16		0IIRM1628UN	16
	0IIRM2029UN	20		0IIRM2028UN	20



Note:

The recycling inserts are components that allow to obtain a specific characterization of the moulded product. Upon request recycling inserts with special engraving can be realized.

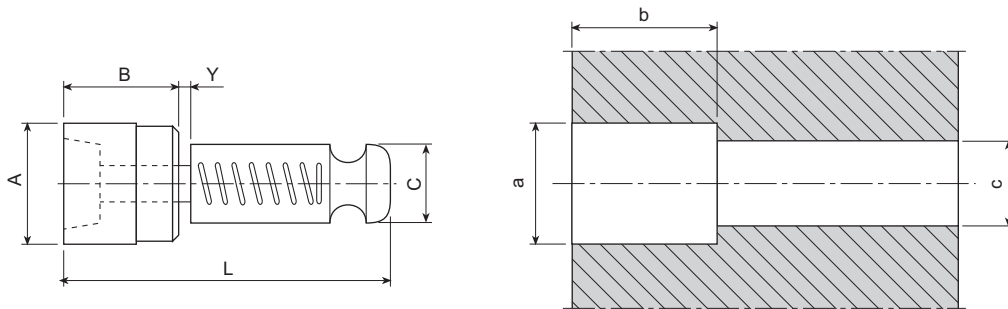
In case of order it is necessary to send us a sketch with the needed engraving and specify the outside diameter.

Material: Stainless Steel, hardened 48-52 HRC.

(*) Available upon request

Made in Italy

VA



Item Nr.	$\varnothing A$	B $+0,030$ 0	$\varnothing C$	L	Y	$\varnothing a$ $+0,005$ $-0,005$	b 0 $-0,030$	$\varnothing c$
0IVA01H	8 $+0,015$ $+0,006$	11	6	24	1,0	8	11	6,75
0IVA02H	12 $+0,018$ $+0,007$	18	8	34	1,0	12	18	9
0IVA03H	18 $+0,018$ $+0,007$	22	12	45,5	1,0	18	22	14

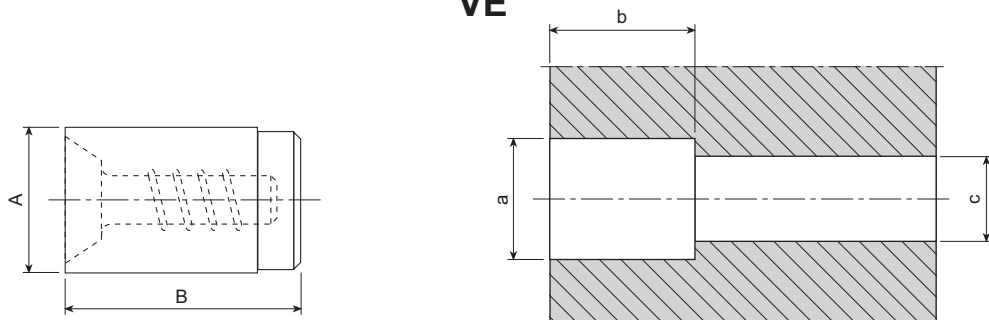


Note:

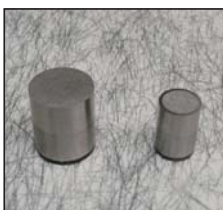
- The air valves are components that allow, through a mechanical movement, to transfer the compressed air to guarantee the extraction of the mould, breaking the vacuum.
- The air valve VA is made up of: external body, internal valve, end of stroke lock and spring
 - The external body is in stainless steel hardened 52-54 HRC
 - The internal valve is in stainless steel hardened 44-46 HRC and TIN coated
 - The spring is in stainless steel designed for fast cycles
 - All the internal surfaces are grounded
 - The production batch number is indicated on the end of stroke lock
 - Applications with high pressures allowed by the special design
 - Maximum service temperature 150 °C
 - It is recommended do not work the frontal surface of the valve

Made
in Italy

VE



Item Nr.	$\varnothing A$	B $+0,030$ 0	$\varnothing a$ $+0,005$ $-0,005$	b 0 $-0,030$	$\varnothing c$
0IVE01	8 $+0,015$ $+0,006$	14	8	14	5
0IVE02	12 $+0,018$ $+0,007$	18	12	18	8
0IVE03	18 $+0,018$ $+0,007$	22	18	22	8



Note:

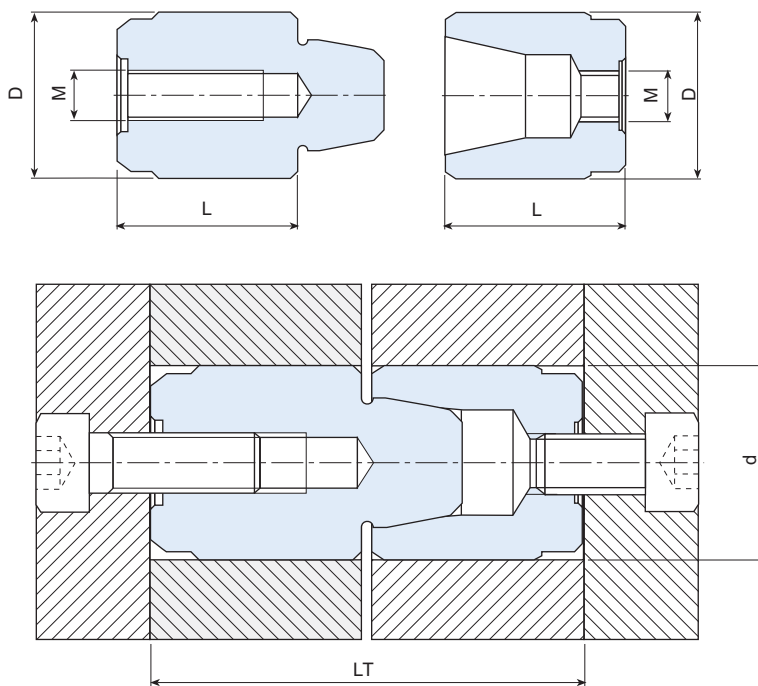
- The air valves are components that allow, through a mechanical movement, to transfer the compressed air to guarantee the extraction of the mould, breaking the vacuum.
- The air valve VE is made up of: external body, internal valve and spring
 - The external body is in stainless steel hardened 42-44 HRC
 - The internal valve is in stainless steel hardened and tempered
 - The spring is in stainless steel
 - Maximum service temperature 125°C
 - Easy to install
 - No maintenance required
 - It is recommended do not work the frontal surface of the valve

Made
in Italy

Tapered interlocks

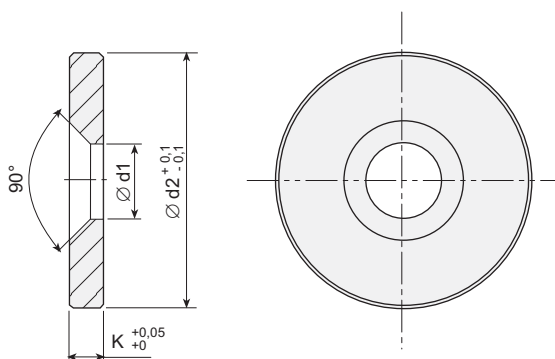
Material: 1.7131
Hardness: 58 - 62 HRC

Made
in Italy



Item Nr.	ØD k6	L	LT 0 -0,08	Ød H7	M
0HFTMT1215	12	15	32	12	5
0HFTMT2021	20	21	44	20	6
0HFTMT2031	20	31	64	20	6
0HFTMT2521	25	21	44	25	6
0HFTMT2531	25	31	64	25	6
0HFTMT2541	25	41	84	25	6
0HFTMT3230	32	30	62	32	8
0HFTMT3250	32	50	102	32	8
0HFTMT4230	42	30	62	42	8
0HFTMT4250	42	50	102	42	8

Shoulder plates for tapered interlocks FTMT



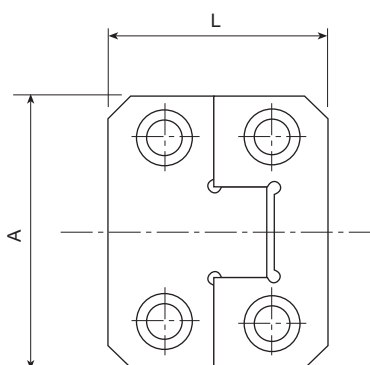
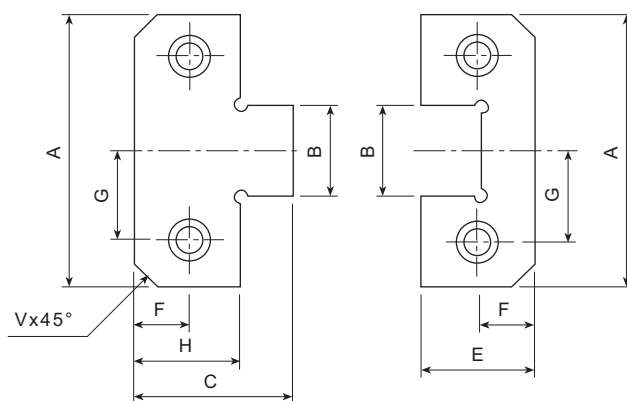
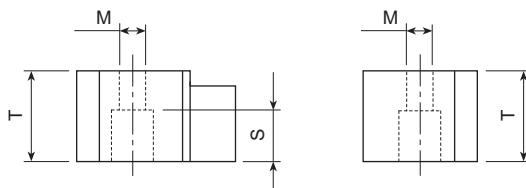
Made
in Italy

Material: 1.7131
Hardness: 58 - 62 HRC



Item Nr.	Ød1	Ød2	K	Ref. FTMT
0HAGS12C	5,5	16	5	12
0HAGS20C	6,6	25	5	20
0HAGS25C	6,6	30	5	25
0HAGS32C	9	37	6	32
0HAGS42C	9	47	6	42

Material: 1.7131
Hardness: 58 - 62 HRC



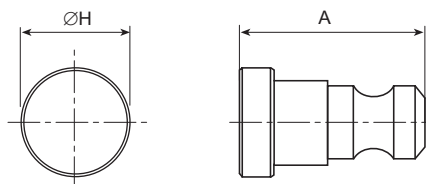
Item Nr.	A ⁺⁰ _{-0,01}	L	B	C	E	F	G	H	V	S	T	M
0HCPS038	38	44	12	30	22	7	11	22	5	8	13	M6
0HCPS050	50	43	17	30	21,5	11	17	21,5	5	8	16	M6
0HCPS075	75	72	25	50	36	18	25	36	8	12	19	M10
0HCPS100	100	90	35	65	45	22	35	45	10	12	19	M10
0HCPS125	125	90	45	65	45	22	42	45	10	12	25	M10



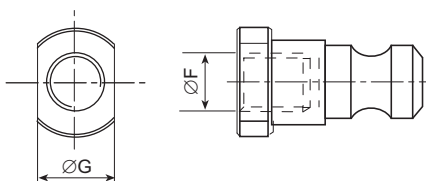
Ref.	AR 01N	AR 02N
A	38	43
B	43	73
C	18	24
D	43,5	75,5
E	M16	M20
F	M12	M16
Kg*	4.000	16.000
G	19	32
H	22,5	40

Kg* = maximum load

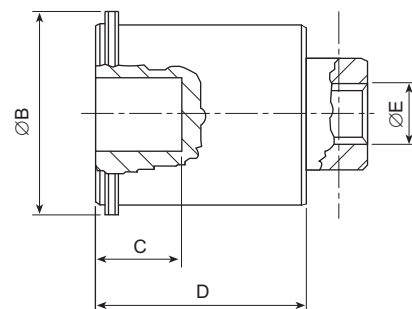
Standard plug



Plug with screw



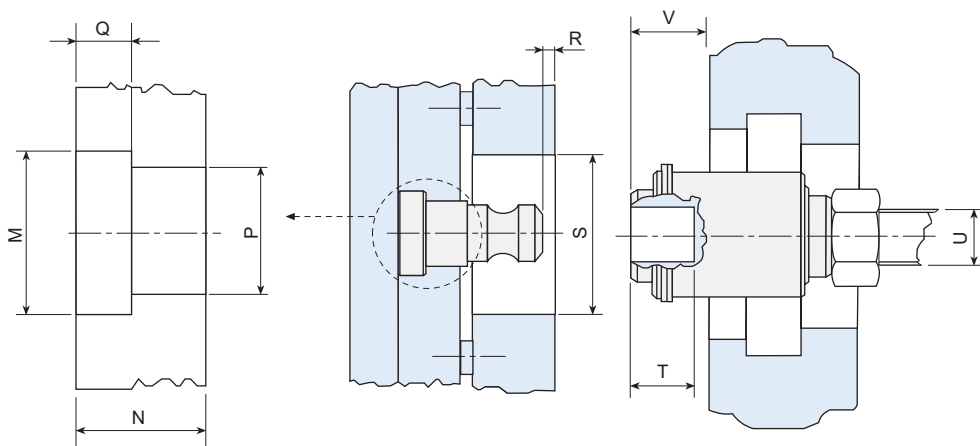
Body



Installation

Ref.	AR 01N	AR 02N
M	23	42
N	18	18
P	18	32
Q $\begin{matrix} +0,05 \\ -0,02 \end{matrix}$	7	8
S	48	80
T $\begin{matrix} +0,02 \\ -0,02 \end{matrix}$	18	24
U	M16	M20
V	R+T	R+T

R = variable quote that must be measured



Note:

The quick action ejector return couplings are components that allow the connection between the hydraulic ejector of the machine and the ejector plate of the mould.

- Only one unit required per injection moulding machine, the plugs can be ordered separately
- No maintenance required
- Accurate adjustment of the hydraulic ejector stroke
- Seizure and wear avoided
- Accurate adjustment of the ejector pins
- Avoided sliding components
- Avoided springs
- Easy to install

Made in Italy



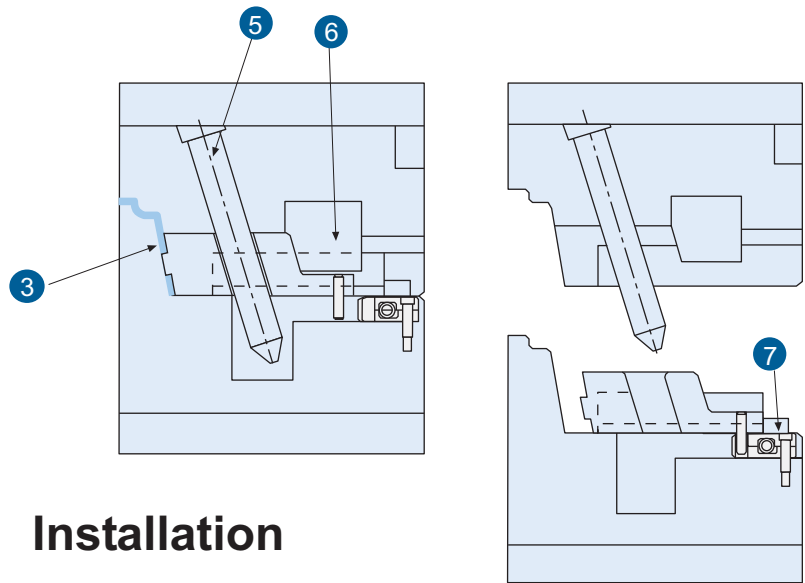
Ref. example: 0DAR01N QUICK RETURN COUPLING AR-01 (complete, body + plug with screw)
 0DAR01PF PLUG WITH SCREW AR-01
 0DAR01PT STANDARD PLUG AR-01

Note:

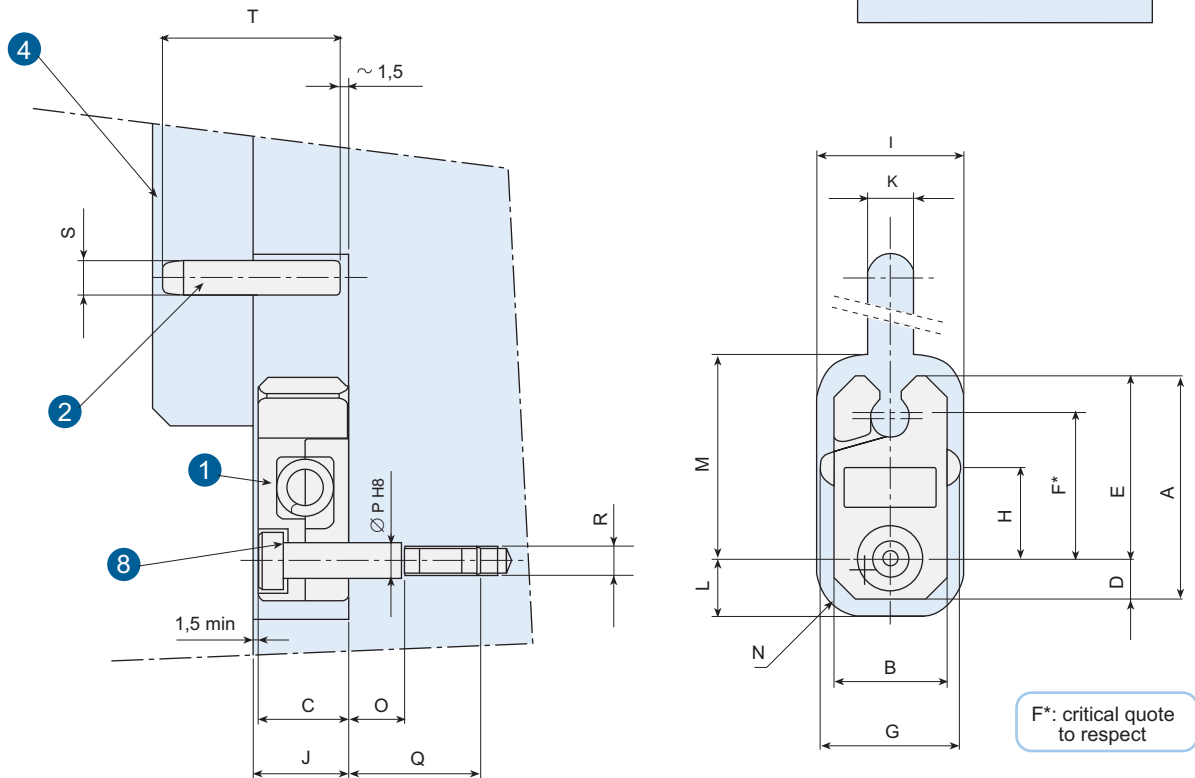
The slide retainers are mechanical components that allow the stop and the perfect positioning of mechanical trolley used to free the undercut.

- 1 slide retainers
- 2 dowel pin
- 3 moulded part
- 4 slide
- 5 cam pin
- 6 wear plate
- 7 stop block
- 8 stripper bolts

Made in Italy



Installation



Item Nr.	Cam slide									a*	b*	
	A	B	C	D	E	F	G	H	I	Newton	Ref.	c*
0ESR0001	38	19	16	7	31,5	24,89	24,0	15,5	25,5	150	SB5x20	10
0ESR0002	54	32	20	11	43,0	34,93	36,5	22,5	38,0	250	SB6x25	15
0ESR0003	86	45	30	19	67,0	53,98	49,5	40,0	51,0	500	SB8x40	20

a*= max. slide weight / b*= stripper bolt / c*= max. opening force in Nm

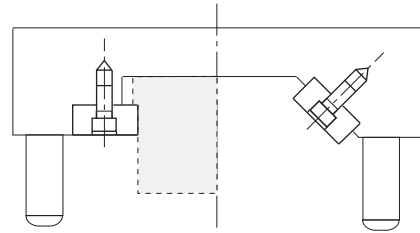
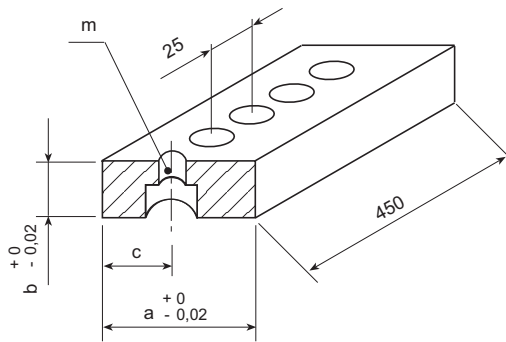


Item Nr.	Retainer seat in mold										Dowel pin	
	J _{min}	K	L	M	N	O	P	Q	R	S	T	
0ESR0001	17,5	8	10,0	34,5	8	8,5	6	20	M5	6	32	
0ESR0002	21,5	10	14,5	46,0	10	10,5	8	25	M6	8	40	
0ESR0003	31,5	12	22,5	70,0	12	17,0	10	35	M8	10	60	

Flat guide rail with borings - PGX / PGZ

Material: 1.2842
Hardness: 52-54 HRC

Made
in Italy



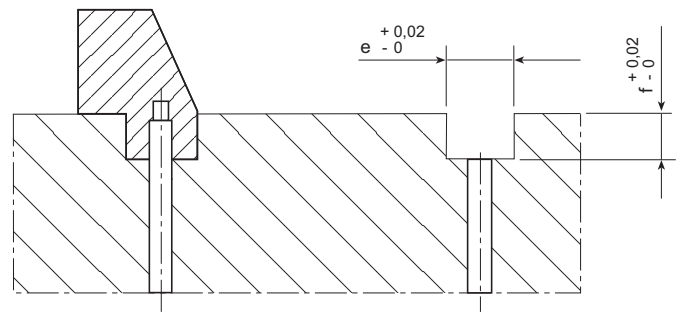
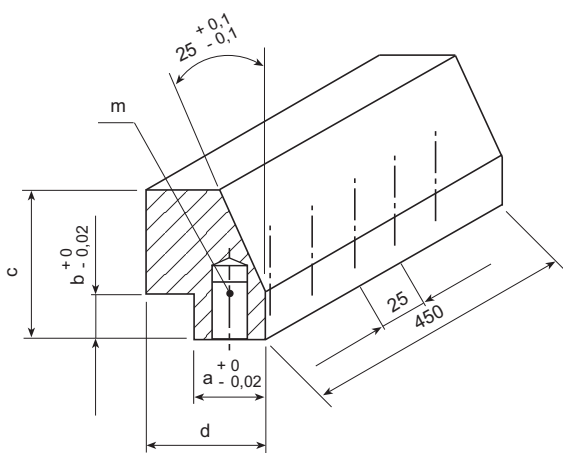
Code	a	b	c	m
0RPGX	22	9	10	TCEI M6
0RPGZ	17	6	7,5	(*)TCEI M5

(*) SHCS, flat head DIN 7984

Cotter with grinding allowance - CX / CZ

Material: 1.2343
Hardness: 52-54 HRC

Made
in Italy

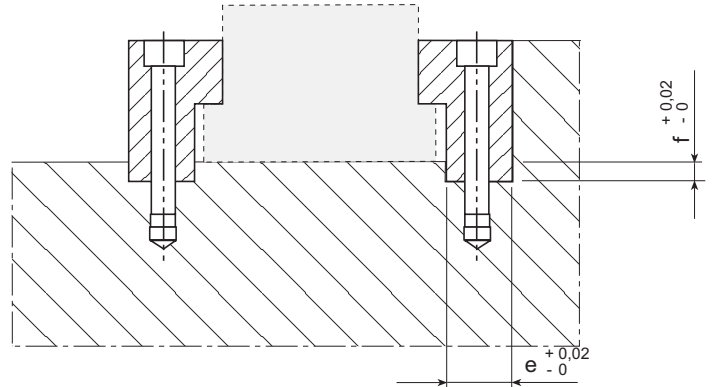
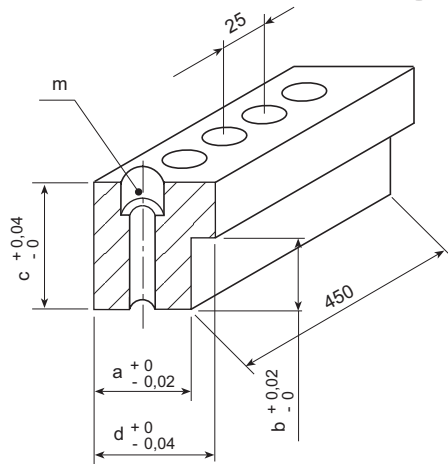


Code	a	b	c	d	e	f	m
0RCX	20	12	34	34	20	12	M10
0RCZ	14	10	24	24	14	10	M8

One-sided guide rail with borings - GLX / GLZ

Material: 1.2842
Hardness: 52-54 HRC

Made
in Italy

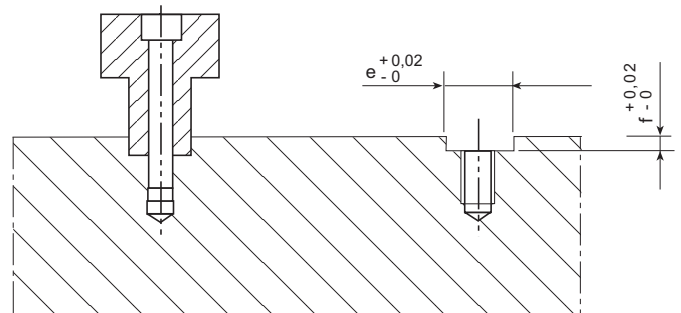
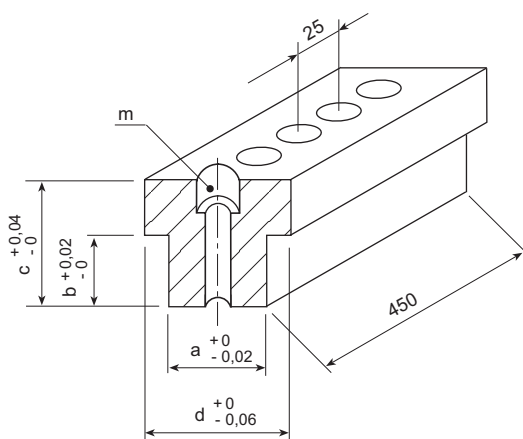


Code	a	b	c	d	e	f	m
0RGLX	14	10	24	19	14	2	TCEI M6
0RGLZ	14	10	19	19	14	2	TCEI M6

Two-sided guide rail with borings - GTX/GTZ

Material: 1.2842
Hardness: 52-54 HRC

Made
in Italy



Code	a	b	c	d	e	f	m
0RGTX	14	10	24	24	14	2	TCEI M6
0RGTZ	14	10	19	24	14	2	TCEI M6