

Table of Contents

1. System Features

1-1. Package Contents	3
1-2. System Requirements.....	3
1-3. Hardware Description and Features.....	4
1-4. VS-Box Hardware Specification.....	5

2. Installation

2-1. VS-Box Hardware Setup.....	5
---------------------------------	---

3. Accessing the VS-Box (Connect to Camera)

3-1. Change the VS-Box IP Status.....	9
3-2. On the LAN with DHCP Server.....	10
3-3. On the LAN without DHCP Server.....	10
3-4. On the LAN use with the ADSL Router.....	11
3-5. Access the VS-Box by ordinary user login.....	12

4. Change password.....	12
-------------------------	----

5. View Log.....	12
------------------	----

6. Configuration

6-1. System Settings.....	14
6-1-1. Camera name.....	14
6-1-2. Camera's time.....	14
6-1-3. Web Server Port Number.....	14
6-2. Camera Control.....	15
6-2-1. Quality Setting.....	15
6-2-2. Resolution Setting.....	16
6-2-3. Frequency Setting.....	16
6-2-4. Camera Advanced adjust.....	16
6-2-5. Split setting.....	17
6-2-6. Operation Mode.....	17
6-3. User Setup.....	17
6-3-1. Current User.....	17
6-3-2. Account Management.....	18
6-3-3. Delete Account.....	18
6-4. Motion Detection.....	19
6-4-1. Motion Detection Enabling / Disabling.....	19
6-4-2. Set Detection Area.....	19
6-4-3. Motion detected mail function.....	19
6-4-4. Motion detected mail.....	20

6-4-5. Motion detected message on the main window.	20
6-4-6. FTP uploads when motion detected.	20
6-5. Network Setup.....	21
6-5-1. Manual Setting	21
6-5-2. Connect to ADSL by PPPOE mode.....	21
6-6. Audio Setup.....	23
6-6-1. Audio Configure.....	23
6-7. DDNS Setup	23
6-7-1. DDNS Server.....	23
7. Delete a Camera.....	24
8. Snapshots.....	24
9. Image Recording	
9-1. Save as JPEG.....	24
9-2. Save as AVI.....	25
9-3. Save Current Picture As.....	26
10. Hardware Reset.....	26
11. Accessing VS-Box over the Internet	
11-1. WAN IP Address.....	27
11-2. Network Address Translation (NAT)	28
11-3. Port Forwarding.....	28
11-4. Default Gateway.....	29
12. Network Utilities	
12-1. Determining your IP Address and Network Settings.....	29
12-2. Using PING.....	30
12-3. IPEdit.....	31
13. Router Configuration.....	31
14.How to combine with VS-Box and webpage ?	37

2006/01/23 V1.1

Introduction

VS-BOX is an Internet-based digital media server, video sources and audio source to distribute their compressed live video and audio into Intranet-Internet through Ethernet connection. VS-Box is a self-contained Web Server, so users could access the AV VS-Box just browsing website over Internet using standard browser such as Explorer or another browser, and do all the management, configuration, and monitoring easily. VS-Box contains image compression chipset that is capable of delivering standard JPEG, MJPEG, and real-time video into limited network bandwidth

1. System Features

1-1. Package Contents

1. VS-Box
2. Power Adapter
3. Red Color 10/100 Mbps Ethernet LAN Cable (MDI / X, Cross over LAN cable)
4. Blue Color 10/100 Mbps Ethernet LAN Cable (MDI)
5. VS-Box installation CD-ROM
6. User's Manual
7. Climbers with screws
8. Warranty card
9. rubbers x 4

1-2. System Requirements

To view the camera web page

- ♦ Web Browser – Internet Explorer for Windows 5.0 or higher
- ♦ PC with Windows 98/98SE, Me, 2000, or XP connected to LAN

To run the included software (IPEDIT) applications

- ♦ PC - Intel Pentium III or equivalent, 500MHz or above, 64MB RAM, 150 MB Hard Disk Space, 800x600 resolution with 16-bit color
- ♦ Windows 98/98SE, Me, 2000, or XP

To access cameras from the Internet

- ♦ Broadband Internet Connection (DSL, Cable Modem) with min. 128k upload speed

1-3. Hardware Description and Features

- ◆ Connect to any analog camera (Color , B/W)
- ◆ Connect TV and DVD / VCD Player
- ◆ Built-in Microphone with Audio / Video Function
- ◆ Real-Time Motion Detection
- ◆ Support TCP/IP, SMTP, FTP, PPPoE , DHCP (Dynamic Host Configuration Protocol)
- ◆ Built-in web server allows camera to be accessed by standard Internet browser
- ◆ Network RJ45: 10Base-T/100Base-TX Ethernet networks
- ◆ Network ready, IP addressable (no PC is required.)
- ◆ Motion-JPEG based compression
- ◆ 5 different resolutions: 640x480, 352x288,320x240,176x144,160x120
- ◆ Record AVI or Motion JPEG images on to hard disk for future viewing

Network

- ◆ Fixed IP.
- ◆ Dynamic IP by DHCP.
- ◆ Directly connect to ADSL by PPPoE, mail the IP setting to preset mail address.

User Management

- ◆ User Management for Add User, Delete User, and Change Password.
- ◆ Administrator, privileged user to change any settings.
- ◆ General users, view images only.

Camera Control

- ◆ Layout :1x1, 2x2, 3x3, 4x4.
- ◆ Resolution: 160x120, 176x144, 320x240, 352x288, 640x480.
- ◆ Quality: Highest, High, Medium, Low, Lowest
- ◆ Image Rotate / Flip.
- ◆ Video Adjustment: Brightness, Contrast, Saturation, Hue, Sharpness

Motion Detection

- ◆ Software Real-Time Motion Detection.
- ◆ Selected Region Provided.
- ◆ E-Mail the Detected Images to preset e-Mail address.
- ◆ FTP the Detected Images to preset FTP server.

Browser Support

- ◆ IE only (ActiveX Control) save the current image local PC.

- ◆ ActiveX controls: ActiveX controls support full functions, including the Right Mouse Button Menu control.

Utility

- ◆ IPEDIT.EXE to scan the Installed IP-Cams and change the Camera Name and IP Address

1-4. VS-Box Hardware Specification

- ◆ Built-in web server allows camera to be accessed by standard Internet browser
- ◆ Network, RJ-45: 10Base-T/100Base-TX Ethernet networks
- ◆ Network ready, IP addressable (no PC required.)
- ◆ Motion-JPEG based compression
- ◆ Size: 91 mm x 65 mm x 53 mm
- ◆ Weight: 163 g
- ◆ Power Supply: 5.1 VDC/2A

2. Installation

Before installing the IP- Box, You should have an available Ethernet LAN connection (RJ-45 port). To view the camera's image or make any manual configuration changes, you will need a Windows PC with Internet Explorer 5.0 or higher and connection to the LAN.

2-1. VS-Box Hardware Setup

1. Insert the power-cord to VS-Box.
2. Insert the Network Line to VS-Box and Computer LAN Card RJ-45 port (Red color LAN Cable).
3. Equip Camera to Video-in port, Power-On the Camera
4. Power-On the Computer for IP setup.
5. Use the IPedit.exe tools to find the VS-Box.
6. Use IE to view the VS-Box image.



Step1.Plug the Ethernet cable onto VS-Box

Plug the included RED Color Ethernet cable into the RJ-45 connector at the back of the VS-Box as

Step 2. Plug the Ethernet cable into PC

1. Temporarily disconnect the existing network cable from the PC.
2. Plug the other end of the Ethernet cable into any available LAN port. A typical home router/gateway connection is shown on the



Step 3. Equip Camera to Video-in port

1. Connect the BNC Cable to the VS-Box from Camera , Power-On Camera then

Step 4. Connect the Power Supply to the VS-Box

Connect the power supply to the back of the VS-Box as shown, and then plug the supply into an available power outlet.

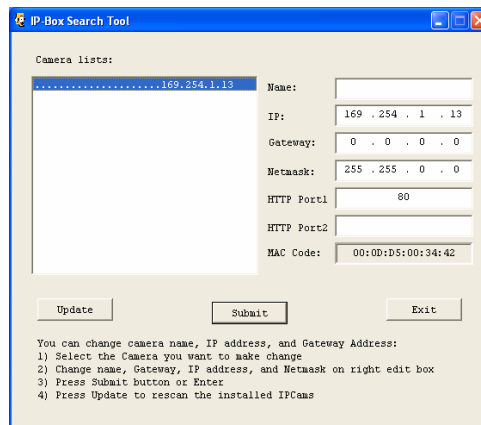


Step 5. Ensure the VS-Box power light is lit

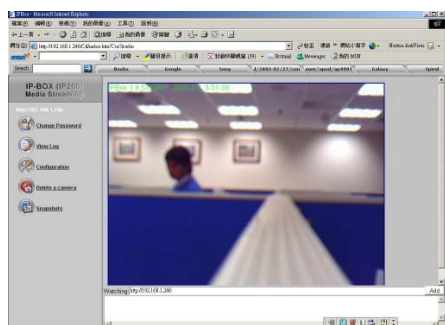
When the VS-Box is connected with power, the LED light on top of the VS-Box will light up. This indicates that the VS-Box is powered on.

Step 6. Using IPedit.exe to test the VS-Box

1. Use IPEDIT.EXE to find the installed VS-Box
2. The VS-Box without IP allocated by DHCP will have a default IP address of 169.254.xx.
3. Select this VS-Box on Camera List Window.
4. The default configuration will be shown on the right window.
5. Change VS-Box network settings.
 - ◆ Update the Camera Name (Fixed IP).
 - ◆ Update the Gateway Address (192..0.1).
 - ◆ Update the IP address of this VS-Box (192.168.0.30).
 - ◆ Update the Network Mask (255.255.255.0).
 - ◆ 'Submit' it.



After the "Submit" button is clicked, The IP information of this VS-Box will updated.



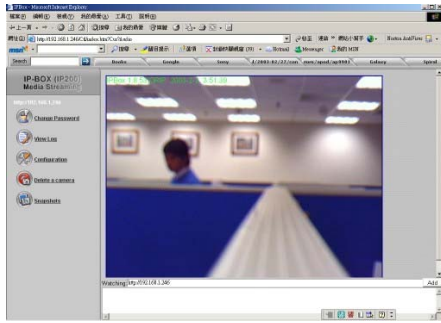
Step 7. Using IE to view VS-Box image

1. Start the Internet Explorer, key in the IP Address of VS-Box into the Address field, such as 192.168.0.245.
2. Turn the lens to the left or right to adjust the clarity of the focus.

Step 8. Connect VS-Box to the ADSL Modem or LAN Hub

1. Remove the red network cable from the PC when all the settings are completed.
2. Reconnect the existing network cable to the PC.
3. Using the blue network cable provided, connect one end to the VS-Box, and the other, to the ADSL model of LAN hub.





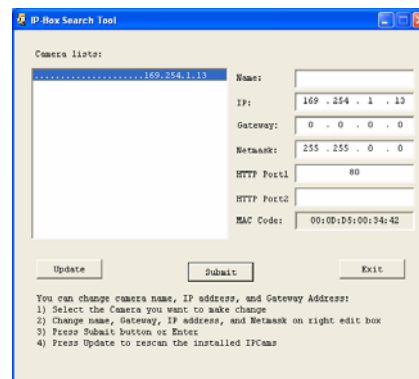
Step 9. View VS-Box Image Remotely

When all settings are completed, you will be able to enter the VS-Box's IP address through the remote PC's IE and view the real-time VS-Box image.

3. Accessing the VS-Box

3-1. Change the VS-Box IP Status

- ◆ Using the IP-Edit, you could select the different network options.
- ◆ The PC network options will display the Gateway and Netmask network settings, which you can edit with IP-Edit.
- ◆ Alternatively, you may contact your network system administrator to provide you with the details of your network Gateway and Netmask settings.
- ◆ Enter the Camera's IP number.
If you allow outsiders to see the VS-Box, please enter another IP address. If you only want the VS-Box to be viewed in the internal network, you could enter a local IP number Example: 192.168.0.99.
- ◆ Clicking "Submit" will update all the changes made to the VS-Box settings.



Option Labels	Translations	Functions
Name:	Name of the Camera	Options for the name of the camera
Gateway	Gateway	Reviews through your network options
IP	Network Address	
Netmask	Network	Reviews through your network options
HTTP Port 1	HTTP Port 1	80
HTTP Port 2	HTTP Port 2	IP address given by the administrator, refrain from changing it
MAC	MAC Address	

Example:

Hinet uses the IP address number:

Use IPEDIT to enter Hinet assigned IP address.

Launch IE Browser.

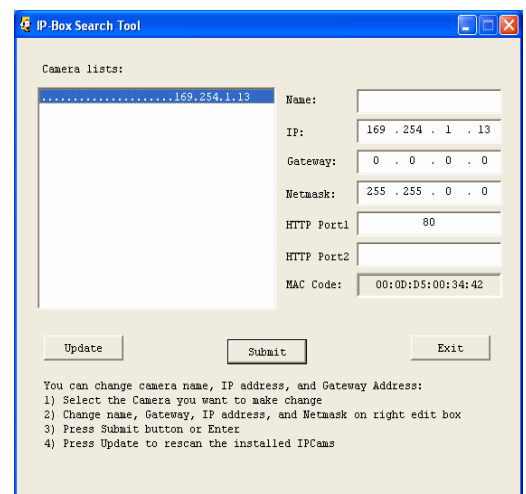
Go to VS-Box → Network Setup → PPPoE.

Set ADSL User ID and Password provided by Hinet.

Click Submit and restart the PC.

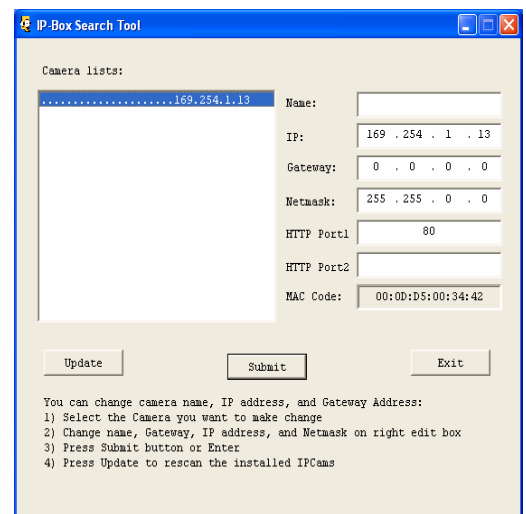
3-2. On the LAN with DHCP Server

1. Use IPEDIT.EXE to find the installed VS-Box.
2. Select this VS-Box in the Camera Lists Window.
3. The default configurations will be shown in the right window.
4. Update the Camera's IP status.



3-3. On the LAN without DHCP Server

1. Use IPEDIT.EXE to find the installed VS-Box.
2. The VS-Box without IP allocated by DHCP will have a default IP address of 169.254.xx.xx.
3. Select this VS-Box in the Camera Lists Window.
4. The default configurations will be shown in the right window.



1. Update the Camera Name (Fixed IP)
2. Update the Gateway Address (192.168.0.1).

3. Update the IP address of this VS-Box (192.168.0.30).
4. Update the Network Mask (255.255.255.0).
5. 'Submit' it.

After the button 'Submit' is clicked, the IP information of this VS-Box will be updated.

Access this VS-Box by this IP address; on the Configuration -> Network, the Fixed IP address was assigned.

3-4. On the LAN use with the ADSL Router

If the VS-Box was installed on the ADSL router, the VS-Box will dynamically be allocated an IP address from the DHCP server. However, if the VS-Box wants to be accessed from the WAN, the VS-Box IP address needs to be setup as fixed IP. Same goes for the Virtual Server function of ADSL router, which needs to be setup as well.

1. Setup the VS-Box as Fixed IP, such as 192.168.0.49.
2. Enter the administrator page of +ADSL router. (Use sonnet ASDL router as an example).
3. Enter the Virtual Server Page.
 - A. Setup the mapping of HTTP Port (80) to 192.168.0.49.
 - B. Restart the ADSL router.

Then the VS-Box can be accessed from WAN, by the ADSL WAN IP Address.

3-5. Access the VS-Box by ordinary user login.

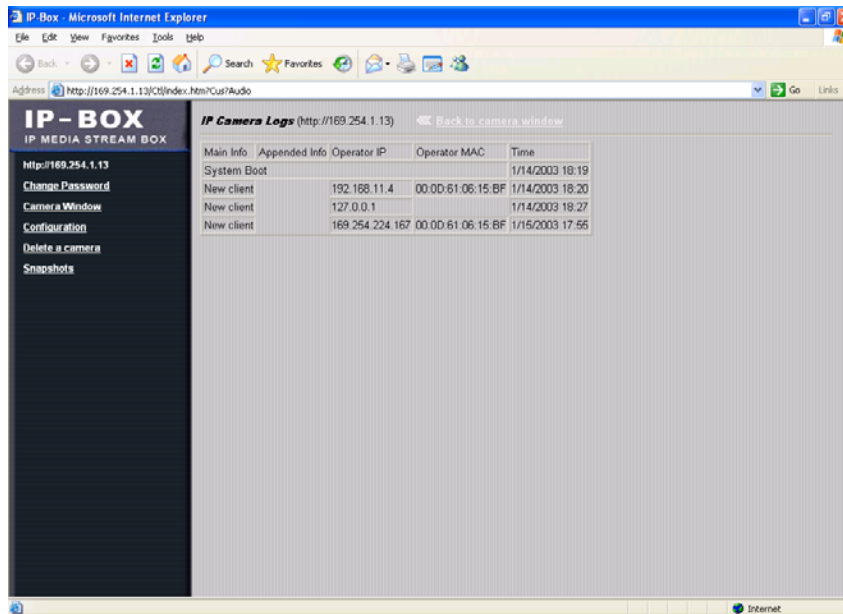
If the user accesses the VS-Box by an ordinary user account, the VS-Box would not allow the user to access the privileged functions. From the following screen, the Configuration is disabled.

4. Change password

From the following screen, the change password will be passwords setting

5. View Log

The user can check the log information of the VS-Box, including the Main Info, Appended Info, Operator IP, Operator MAC, and Time.



Select the "Camera Window" button to return to Camera mode.

6. Configuration

Only the administrator can select the “Configuration”, the ordinary user account does not have this privilege to access this function.

The screen is the main menu for configuration setting, When the administrator selects the “Configuration” in the main window.



VS-Box provides 7 types of configurations:

- System Settings
- Camera Control
 - Quality , Resolution , Splits settings
- User
 - To add / delete user, change password; enable/disable user check.
 - Add User.
 - Change Password.
 - Delete User Account.
- Motion Detection
 - Enable/Disable motion detection.
 - Motion detected mail setting.
 - Motion detected FTP setting.
- Network – VS-Box Network connection setting.
 - DHCP – setting the IP dynamically.
 - Fixed IP – setting the IP manually.
 - Connect to ADSL by PPPoE.
- AUDIO – Audio Configure
- DDNS
 - DynDNS



6-1. System Setting

6-1-1. Camera Name

The camera name can be set on the “**Camera Name**” field, and select “change” to submit it .

6-1-2. Camera’s time

Select “**NTP**” button

Key in the Sever IP address Like : <http://www.org.ntp.org>

Presses “adjust” to activate.

After VS-Box get the time from NTP sever, it will update the Camera’s time field.

Select “Input new time” button and click on “ Synchronize with PC”s time “
Key in “mm/dd/yyyy” format into “ Date “ field , and “hh:mm:ss” by 24hours format into “ Time “

Filed, then Select the “Adjust” button to adjust the time !

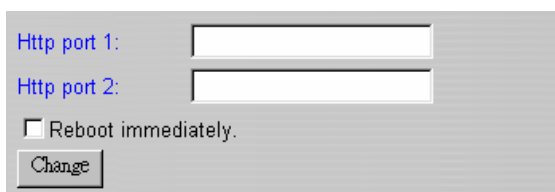
6-1-3. Web Server Port Number

The implementation supports 2 HTTP port settings. The HTTP “Port 1” is set to 80, the HTTP “Port 2” is set to 8080. The user can access the VS-Box by

<http://xx.xx.xx.xx/>

or

<http://xx.xx.xx.xx:8080/>



Http port 1:
Http port 2:
 Reboot immediately.

to access the VS-Box

It is recommended to keep the HTTP “Port 1” as 80 to make sure the VS-Box can be accessed by the default HTTP port setting access on the LAN.

<http://xx.xx.xx.xx/>

If multiple VS-Boxes are installed on the LAN, also required to be accessed from the WAN, the HTTP “Port 2” can be changed as the virtual server port mapping to support multiple VS-Boxes. The following table lists example configurations.

VS-Box IP	HTTP port.1	HTTP port.2	Virtual Server Port Setting	Access VS-Box on LAN	Access VS-Box on WAN IP: 68.68.68.68
192.168.1.1	80	8080	8080 → 192.168.1.1	http://192.168.1.1 http://192.168.1.1:8080	http://68.68.68.68:8080
192.168.1.2	80	8081	8080 → 192.168.1.1	http://192.168.1.2 http://192.168.1.1:8081	http://68.68.68.68:8081
192.168.1.3	80	8082	8080 → 192.168.1.1	http://192.168.1.3 http://192.168.1.1:8082	http://68.68.68.68:8082

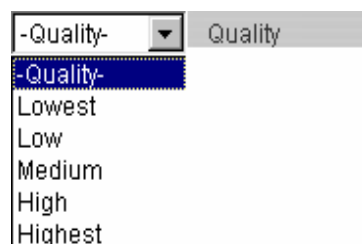
6-2.Camera Control

On the IE Browser, right mouse click on the video to activate a pop-up menu. You can then change the camera settings accordingly.

6-2-1. Quality Setting

The VS-Box provides 5 image quality settings. The user can select the Quality setting from the Quality list box.

- Low
- High
- Medium
- Low
- Lowest

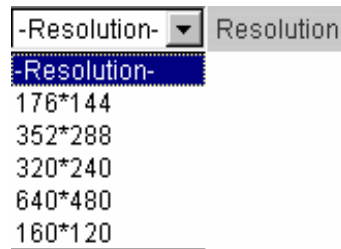


Note: The value in the list box displays the current setting of the current image. When you make a new selection, the value on the list box will be changed to the new image quality settings.

6-2-2. Resolution Setting

VS-Box provides 5 resolutions,

- 640 X 480
- 320 X 240
- 352 X 288
- 176 X 144
- 160 X 120



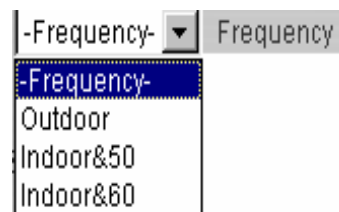
User can select the desired new setting from the “Resolution” list box.

Note: The value in the list box displays the current setting of the current image. When you make a new selection, the value on the list box will be changed to the new image quality settings.

6-2-3. Frequency Setting

VS-Box provide the Frequency setting for

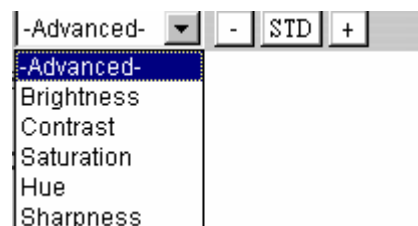
- Outdoor
- Indoor & 50
- Indoor & 60



6-2-4. Camera Advanced Adjust

VS-Box provide the advanced setting for

- Brightness
- Contrast
- Saturation
- Hue
- Sharpness



To control the camera, use the “+” to increase, “-“ to decrease it, or “**STD**” to return to default value.

6-2-5. Split Setting

VS-Box provides 4 settings for split windows. It can display different time frame images of the selected VS-Box. The time string with green characters is the current displayed image.

4 types of Split window,

- 1 x 1 (Default)
- 2 x 2
- 3 x 3
- 4 x 4

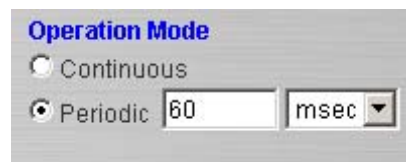


Note: The images on the split window are on the same camera, but with different time. It is useful on the low frame rate condition, and then user can check the images that are the recently got.

6-2-6. Operation Mode

Continuous Mode: The VS-Box will always try to capture the image as fast as possible. This is the default setting.

Periodic Mode: ms (mill-second) or s (second) can be set. The value set here must be greater than 0.

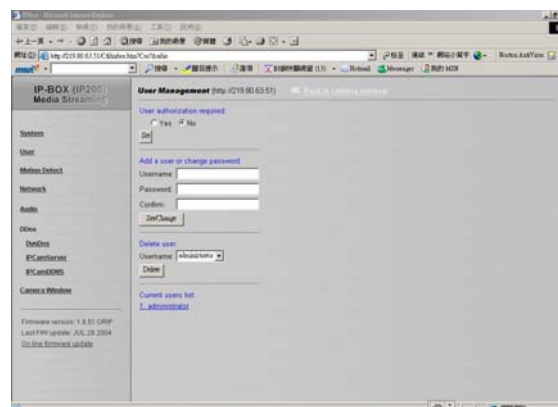


Setting the periodic mode to 5 seconds will update the image every 5 seconds. The time interval can be checked by the time displayed on the image.

6-3. User Management

6-3-1. Current User

If you are logging in for the first-time, the user name in the “Current User” section should display “administrator”.



6-3-2. Account Management

User authorization required:

Checking the “Enable use check” check box will enable the user check when the users want to access the VS-Box. The Login window will prompt for the User name and Password.

If the check box is not checked, then the user check will not be enabled. All users can access the VS-Box directly, with the administrator’s permission. A Login window is not required.

Note: Before you select “Enable user check” check button, please remember to change the administrator password.

Add a user or change password:

Enter a new user name and password information to create a new user account, or enter an existing user account, then set a new password to replace the old password.

Confirm by clicking on the [Change/Create] button to create the account or change password.

After submitting, the “Current User List:” would display the newly created user account. In this example: “newuser”.

6-3-3. Delete Account

Select the user account from the “Username” list box.

Click the [Delete] button to delete the selected user account. A confirmation window will prompt the user to select “OK” or “Cancel”.

After selecting the “OK” button, the selected user account will be deleted from the “Current User List”. In this example, the “newuser” account will be removed.

6-4. Motion Detection

6-4-1. Motion Detection Enabling / Disabling

Check the “Enable motion detection” check box to activate the motion detection.



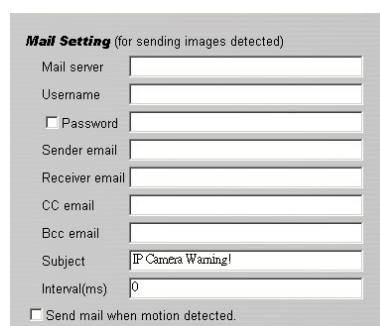
Motion Detect
 Enable Disable
Sensitivity

If the check box is not checked, the motion detection send mail function will not be enabled.

Enter the “Sensitivity” button for select “High” or “Middle” and “Low” mode .

6-4-2. Set detection Area

When motion detection enabling , the user can selected the red line area for security ,the mail function will send the motion-detected images to the preset mail address



Mail Setting (for sending images detected)
Mail server
Username
 Password
Sender email
Receiver email
CC email
Bcc email
Subject
Interval(ms)
 Send mail when motion detected.

6-4-3. Motion detected mail function (mail setting)

When motion detection is enabled, the user can setup the mail function to send the motion-detected images to the preset mail address. The procedures are as follow:

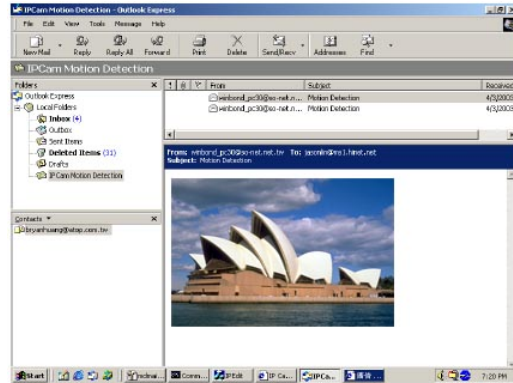
1. Motion Detect set to “Enable” state.
2. Setup the “SMTP Mail Server” and e-Mail address. (password use or not)
3. Enter the sender’s email address in “Sender” field and the recipient’s email address in the “Receiver” field.
4. The user can change the “Subject” field.
5. If the mail server needs authentication, check the “Password” check box. Also, enter the password; otherwise the “Password” field does not need to be filled in.
6. Check the “Send mail when motion detected” check box to enable the operation. If the check box is not checked, the motion detected send mail function will not be enabled.
7. Confirm by selecting [Send Setting] option to save the settings.

Note:

If all of the items are enabled resulting in a motion event detection, the VS-Box will send the motion-detected images to the preset email address. The maximum number of images allowed is 6 images per mail.

6-4-4. Motion detected mail

The received mail will be displayed in a motion picture form. It can also be displayed as separated images with a selection of the circle button on the left side of the Image Viewer.



6-4-5. Motion detected message on the main window.

When the motion detection function is enabled, and a motion detected, a message will be displayed at the bottom.

Motion detection disabled or Motion detection enabled

6-4-6. FTP uploads when motion detected.

The motion-detected images can also be uploaded to FTP server. The procedures are as follow:

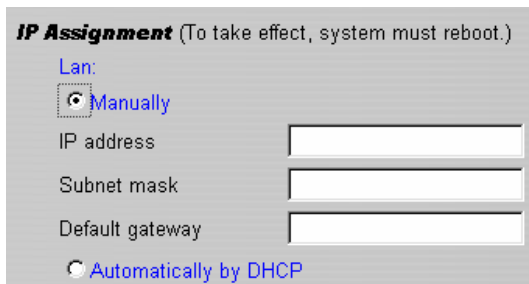
1. Enter the IP address or domain name of the "FTP Server".
2. Enter the "Username" and "Password" of the FTP server.
3. Certain FTP servers need an "Account" field. Leave it blank if it is not needed.
4. Enter the "Remote folder" upload path information for saving the images.
5. Confirm by selecting the [Send Setting] option to save the settings.

6-5. Network Setup

6-5-1. Manual Setting

For fixed IP address users:

On the network environment, the administrator can assign a unique IP address to each VS-Box.



IP Assignment (To take effect, system must reboot.)

Lan:

Manually

IP address

Subnet mask

Default gateway

Automatically by DHCP

The procedures are as follow:

1. Check the “Manually” radio button.
2. Enter the “IP Address”, “Network Mask (Subnet mask)”, “Default gateway”, and the “DNS1”, “DNS2”, as well as ‘DNS3” in formations.
3. Select “Reboot immediately” to reboot the VS-Box to allow these settings to take effect.

DHCP

The “DHCP” is automatically set as the default network setting of VS-Box. When an VS-Box is joined into the LAN, it will issue the DHCP packets to request an IP address that is dynamically assigned by the DHCP server. If it is unable to get a DHCP address on a limited tries, the VS-Box will assign a default IP address such as “169.254.xx.xx”.

6-5-2. Connect to ADSL by PPPoE mode.

The VS-Box can directly connect to the ADSL. However, it should be setup on the LAN environment to setup the PPPoE information before connecting to the ADSL modem. Power on the VS-Box and it will dial in to the ISP connection to the WAN via the ADSL modem.

The procedures are as follow:

1. Connect to the LAN by DHCP or Fixed IP

2. Access the VS-Box and enter [Configuration] → [Network Setup]
3. PPPoE Configuration
4. select the “Dial on power Up” check box.
5. If the ADSL Modem and VS-Box are connected on a hub and after the PPPoE in formations are entered, you can then select the “ Save and Dial Now” option to do the PPPoE dial.
6. Enter the “User” and “Password” fields with the account and password provided by the ISP. If the “Mail after dialed” check box is checked, the mail will be automatically sent when connected automatically to the ISP.
7. If the mail server needs authentication, the “Password” check box needs to be checked and password information, entered.
8. Enter the sender’s email address in the “Sender email” field and recipient’s email address in the “Receiver email” field.
9. The “Subject” field can be modified.
10. Confirm by clicking on the “Save” button to save the settings.

If the VS-Box and ADSL modem are connected by a hub, the administrator can select ”Dial Now” to perform the connect operation. On the contrary, if the VS-Box and ADSL modem are connected directly, then there is a need:

- To power off the VS-Box,
- To connect to the ADSL modem,
- To power-up the VS-Box,
- For the VS-Box to start dialing.
- Once connected, mail the IP address information to the preset e-mail address.
- After 10 times of failed try connections, it aborts the dialing operation and the administrator can reconnect it to the LAN, access it, to find the cause.

Note:

If the PPPoE option “Mail after dialed” is selected, and when PPPoE dials in to the ISP, a mail that contains the Dial Up ISP Address / Netmask / Gateway address / DNS Server address will be mailed to preset the e-Mail address.

6-6.AUDIO Setup

6-6-1 Audio Configure

For fixed Audio option users:

check the “Audio format ” check box to select “PCM” or “Adpcm”

Audio Configure (http://219.80.63.51) << Back to camera window

Client Configure

Audio Format: Pcm Adpcm

Audio On/Off: On Off

Server Configure

Audio On/Off: on off

If the check box is not checked, default setting will be “PCM”!

Check the “Audio On/Off “ button for select “On” or “Off “mode for audio enabled.

6-7.DDNS Setup

6-7-1. DynDns

Check the “Enable” button

Enter in “UserName“ and “password“ with “DomainName“, setup that all information before connecting to the DDns Sever (<http://www.DynDNS.org>), Confirm by clicking on the “Submit” button to save the settings.

Dynamic DNS (http://219.80.63.51) << Back to camera window

Enable Disable

DDNS Mode (Provider) [DynDns.org](http://www.DynDNS.org)

UserName

Password

DomainName

Interval

HTTP Proxy

Proxy Username

Proxy Password

State

Submit

7.Delete a Camera

VS-Box can support view of multiple IP-Cams or VS-Box, you can add a new one into this WebPage by input such as <http://192.168.0.50/> on the *Watching* field. Also a viewed new camera can be removed by select this VS-Box, then press “Delete a camera” to remove it from the WebPage.

8.Snapshots

The user can capture single pictures by this button.

9.Image Recording

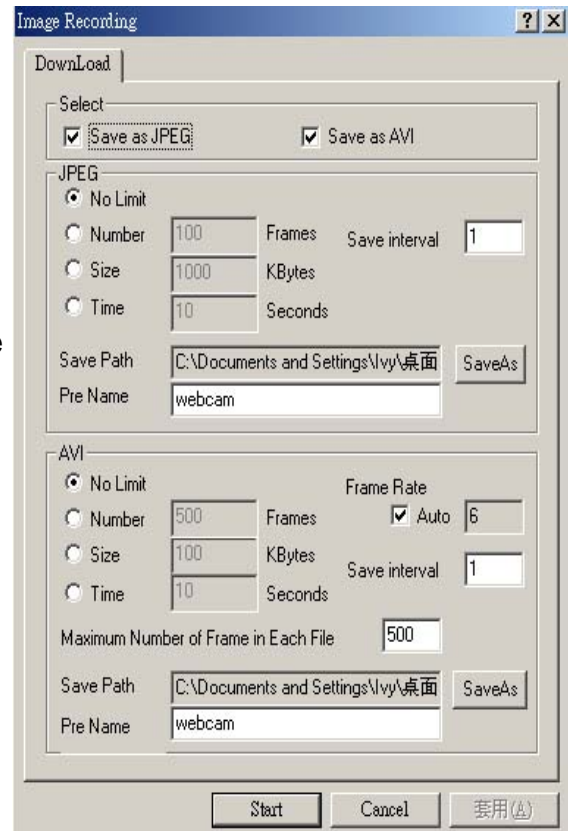
9-1. Save as JPEG

1. Select “Image Recording...”
2. The “Image Recording” pop-up window displays. Check the “Save as JPEG” check box option.
3. Enter the “Download Number” to save the desired number of images, or “Download No Limit” to save the images continuously, until the “Stop Image Recording” is selected.
4. Click on the “Save As” button and a pop-up window displays to select the save path and file name prefix. Select “Save” to continue.
5. Click on the “Start” button to perform the image download process and save the JPEG files into the local PC.



Note:

- During the downloading and saving process, a yellow mark will be



displayed on the right-down position to indicate the saving process.

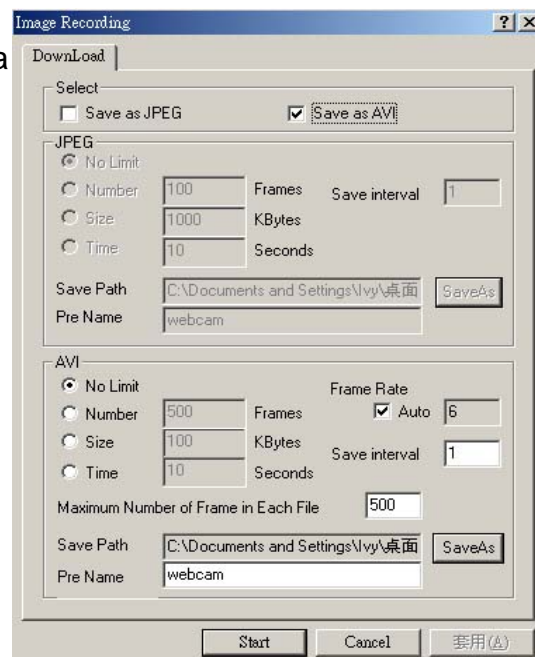
- Before the “Download Number” of images is reached, or if you may have selected “Download No Limit”, click on “Stop Image Recording” to stop the image recording process.

After the “Stop Image Recording”, list the files on the selected saved directory. These files are named

As *file_name_prefixed_yyyy_mm_dd_hh_mm_ss_ms.jpg*

9-2. Save as AVI

1. Select “Image Recording...”
2. The “Image Recording” pop-up window displays. Check the “Save as JPEG” check box option.
3. Enter the “Time”, “Number” or “Size” on each AVI file, until the “Stop Image Recording” is selected. “Frame Rate” is the frame rate setting of the recorded AVI file.
4. Selecting the “No Limit” radio button will save the video file until the “Stop Image Recording” is selected.
5. For each AVI file, the maximum number of images that can be saved in each file are specified in “Max Jpeg Num” Once the images that can be saved on each AVI file are reached by this number, a new AVI file will be created to save the remaining images, until the “Stop Image Recording” is selected.
6. Click on the “Save As” button and a pop-up window displays to select the save path and file name prefix. Select “Save” to continue.



Note:

- During the AVI file recording, a red icon displays on right-down position of the image to indicate the AVI saving process.
- After the “Stop Image Recording”, list the files on the selected saved

directory. These files are named as filename_prefix_date_time.avi.

- The AVI files can be played by any standard Windows Media Player program, but they require the DixectX 8.1 or higher version software driver to be installed.

9-3. Save Current Picture As...

1. Click on the “Save Current Picture As ...” option to save the current image display into the local PC.
2. Enter the name you wish to save as into the “File name” field. Click on “Save”.



10. Hardware Reset

The VS-Box provides a hardware reset button when ever you need to reset the VS-Box due to

- ◆ Loss of administrator password
- ◆ Incorrect network configuration



To reset the VS-Box

- ◆ Make sure the VS-Box is on.
- ◆ There is a small reset hole at the side of the VS-Box
- ◆ Insert an object to depress the reset button inside the hole
- ◆ Depress the reset button for 10 seconds and the VS-Box will automatically reset itself back to the default factory setting.

11. Accessing VS-Box over the Internet

If your home or business LAN is connected to the Internet through a high speed (broadband) Internet connection, with at least 128 kbps upload bandwidth, you can access your cameras via the web browser from anywhere on the Internet. To do this you would need to:

1. Know your WAN (Internet) IP address. This is the IP address that your Internet Service Provider provides you to access the Internet. It may be static (always the same) or dynamic (can change from time to time).
2. Make sure the two ports used by the camera (80 & 1600) are forwarded by your router or gateway to the camera.
3. Make sure your camera default gateway is set to the LAN (local) IP address of your router/gateway.

11-1. WAN IP Address

The WAN (Wide Area Network) IP address that your Internet Service Provider provides you so that you can access the Internet is very different from the LAN or local IP address that your PCs and cameras are using to connect to your local network. Your WAN or Internet IP address is visible to the outside world (Internet) whereas your local addresses are not. To find your home or business network from the Internet you must know your WAN IP address.

Your WAN IP address is stored by your gateway router, which uses it to connect to the Internet. All the devices on your network connect to the Internet via your gateway router. You can find your current WAN IP address by checking your router status page. There are also various websites such as www.whatismyip.com which, will tell you the IP address that you are currently using to access the Internet.

A word about terminology

The term gateway is used generically to define a device that connects a local network to the Internet. A gateway may be a router, a PC running software which allows it to act as a gateway such as a proxy server, or some other device. Most home networks use a NAT (Network Address Translation) router as a gateway. The term gateway router refers to such a device.

Static versus Dynamic IP address

The IP address (or addresses) your ISP has (have) provided you will either be

static, which means it never changes, or dynamic, meaning it can change periodically. Dynamic addresses present an additional challenge when trying to locate your network from the Internet since your address may have changed since the last time you checked it. How often your dynamic address changes varies from one service provider to another. Also, any time you reboot your cable or DSL modem, you are likely to get a new address when reconnecting. The solution to the ever-changing IP address is known as DDNS or dynamic domain name service. A DDNS will allow you to find your network by a domain name, such as mynetcam.no-ip.com, rather than needing to know the IP address.

11-2. Network Address Translation (NAT)

Most home routers and business firewalls today perform something called NAT or Network Address Translation. NAT translates your external or WAN IP address into an internal address inside your gateway router. What this means is, you can think of your router as being divided into two halves, the LAN side (inside) and the WAN side (outside or Internet side). When a connection request arrives at your router from the Internet, it will not get any farther than the WAN side unless you have specifically instructed your router to pass this type of request to a specific device on your LAN. This process is known as port forwarding or port redirecting.

11-3. Port Forwarding

All TCP/IP (Internet) networking uses software ports. Ports can be thought of as channels on your television. By default, all web page traffic is on channel (port) 80. By default, the VS-Box uses port 80 to deliver its web page to your browser and port 1600 to send video. Therefore, both of these *channels* (ports) must be open (not blocked by your router/firewall) to incoming traffic in order for you to connect to the camera from the Internet.

Also, these two ports must be forwarded or redirected to the camera's LAN IP address by your gateway router. Your router's setup software should provide a utility for port forwarding or redirecting. Router configuration contains setup help for some popular home networking gateway routers currently on the market.

Note:

Forwarding ports to your camera does not pose any additional security risk to your LAN. Before setting up port forwarding, it is best to configure your camera

to use a static LAN IP since your port forwarding setup will need to be updated if the camera's LAN IP address changes.

11-4. Default Gateway

Devices (PCs, cameras, etc.) on your network connect to the Internet via a gateway. For most home networks, a NAT type router serves as the gateway. For business LANs, the gateway may be a PC running gateway software. In order for any device on your network to get connected to the Internet, it must know the LAN IP address of your gateway. If your camera is set up to use DHCP, then it will retrieve this information automatically from your router.

However, if you have configured your camera to use a static IP address, you must also be sure that you have set the correct gateway IP address in order to connect your camera to the Internet. Your camera is now live on the Internet. Browsing your camera from the Internet is the same as browsing on your LAN except that you must enter your WAN IP address instead of the LAN IP address.

12. Network Utilities

Microsoft Windows includes various network information utilities to determine various network configurations. To determine your IP address and network settings, follow the steps below, depending on your operating system.

12-1. Determining your IP Address and Network Settings

Windows 98/Me:

1. Click on Start → Run and type in: command and then press ENTER
2. In the MS- DOS window, type in: **wini**pcfg and then press ENTER
3. This will display your network card's Adapter Address, IP Address, Subnet Mask, and Default Gateway.

More information regarding **WINIPCFG** can be obtained by typing in: winipcfg /? at the MS -DOS prompt.

WINIPCFG is located in the C: \Windows folder.

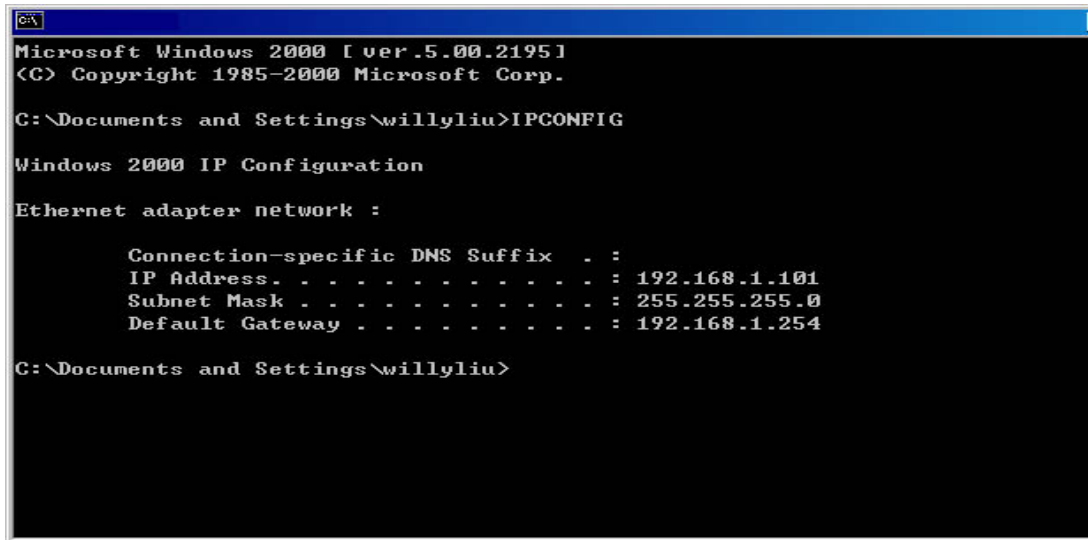
Windows 2000/XP:

1. Click on Start → Run and type in: command and then press ENTER
2. In the MS- DOS window, type in: **ip**config and then press ENTER
3. This will display your network card's IP Address, Subnet Mask, and Default

Gateway.

More information regarding **IPCONFIG** can be obtained by typing in: ipconfig /? at the MS - DOS prompt.

IPCONFIG is located in the C: \Windows \System32 folder.



```
Microsoft Windows 2000 [ver.5.00.2195]
<C> Copyright 1985-2000 Microsoft Corp.

C:\Documents and Settings\willyliu>IPCONFIG

Windows 2000 IP Configuration

Ethernet adapter network :

    Connection-specific DNS Suffix . :
    IP Address . . . . . : 192.168.1.101
    Subnet Mask . . . . . : 255.255.255.0
    Default Gateway . . . . . : 192.168.1.254

C:\Documents and Settings\willyliu>
```

12-2. Using PING

PING is a very useful utility for checking to see if a camera is responding or checking to see if an IP address is available. In Windows 98/Me, PING is located in C: \Windows. In Windows 2000/XP, PING is located in C: \Windows \System32.

Windows 98/Me/2000/XP:

1. Click on Start ->Run and type in: command and then press ENTER
2. In the MS- DOS window, type in: ping XXX.XXX.XXX.XXX and then press ENTER
(where XXX.XXX.XXX.XXX is your IP address) For example, if your Camera uses the IP address of 123.123.123.1, you would type in: ping 123.123.123.1
3. If there is a camera, or a PC or other network device online and using this address you will see:

Pinging 123.123.123.1 with 32 bytes of data:

```
Reply from 123.123.123.1: bytes=32 time<1ms TTL=128
Reply from 123.123.123.1: bytes=32 time<1ms TTL=128
Reply from 123.123.123.1: bytes=32 time<1ms TTL=128
Reply from 123.123.123.1: bytes=32 time<1ms TTL=128
```

Ping statistics for 123.123.123.1:

Packets: Sent = 4, Received = 4, Lost = 0 (0% loss),

Approximate round trip times in milli-seconds:

Minimum = 0ms, Maximum = 0ms, Average = 0ms

If there is NO response on this address you'll see

Pinging 123.123.123.1 with 32 bytes of data:

Request timed out.

Request timed out.

Request timed out.

Request timed out.

Ping statistics for 123.123.123.1:

Packets: Sent = 4, Received = 0, Lost = 4 (100% loss),

This indicates that the address is available for use. However, there could still be a device which is currently offline which is configured to use the address. To be certain, make sure all your network devices are on and connected to your network when checking for address availability.

12-3. IPedit

IPEDIT.EXE is used to scan the Installed VS-Boxes and set the Camera Name and IP Address.

13. Router Configuration

The following section describes the initial configuration of the router and port forwarding for some of the most common routers from 3Com, Belkin, D-Link, Linksys, Microsoft, NETGEAR, Proxim, Siemens, and SMC.

In order to access the OTC IP-Camera/Wireless IP-Camera from the Internet, you'll need to configure your router to use ports 80 and 1600 (default settings). Port 80 is used for accessing the camera's homepage and Port 1600 is used for authentication and video streaming. If your Internet Service Provider blocks ports 80/1600, you'll need to reconfigure your camera and router to other ports such as 81/1601, 82/1602, etc. To change the port settings on the camera, you'll need to use the IP-Cam Setup Utility [Refer to Chapter 5: IP-Cam Setup Utility].

Follow the steps below to configure your router, depending on the router manufacturer and model. If your particular router manufacturer or model is not listed below, please contact your router manufacturer for further assistance in configuring the router.

3Com (<http://www.3com.com>)

OfficeConnect Cable/DSL Gateway - [3C857-US]

OfficeConnect Wireless Cable/DSL Gateway - [3CRWE52196]

1. Log into your router.
2. On the main page, select Firewalls on the left side of the page.
3. Select the Virtual Servers tab at the top of the page.
4. Click New on the right side of the page to open the Virtual Server Settings dialog box.
5. Type in the camera's IP Address in the Server IP Address text box. (Look on the VS-Box 's IP Address LCD Display for the last 3 digits of the camera's IP Address.)
6. Under Local Service, select Custom.
7. Under Custom Service Name, type in: VS-Box.
8. Under Specify Custom Service Ports, type in: 80, 1600.
9. Click Add to save the settings. The VS-Box should now be configured to work with your router and be accessible from the Internet.

Belkin (<http://www.belkin.com>)

Wireless Cable/DSL Gateway Router - [F5D6230-3]

1. Log into your router.
2. On the main page, select Virtual Server on the left side of the page under the Security section.
3. Enter the following information on the page:

Line #1:

Private IP:	Type in the camera's IP address.
Private Port:	80
Type:	TCP
Public Port:	80

Line #2:

Private IP:	Type in the camera's IP address.
Private Port:	1600
Type:	TCP
Public Port:	1600

4. Click Enter to save the settings. The VS-Box should now be configured to

work with your router and be accessible from the Internet.

54g Wireless DSL/Cable Gateway Router - [F5D7230 -4]

1. Log into your router.
2. On the main page, select Firewall on the left side of the page.
3. Under Firewall, select Virtual Servers.
4. Enter the following information on the page:

Line #1:

Private IP: Type in the camera's IP address.
Private Port: 80
Type: TCP
Public Port: 80

Line #2:

Private IP: Type in the camera's IP address.
Private Port: 1600
Type: TCP
Public Port: 1600

5. Click Apply changes to save the settings. The VS-Box should now be configured to work with your router and be accessible from the Internet.

D-Link (<http://www.dlink.com>)

DI -604/DI-614+/DI-624

1. Log into your router.
2. On the main page, click on Advanced at the top of the page.
3. On the left side of the page, click on Virtual Server. Note: Make sure DMZ host is disabled. If DMZ is enabled, it will disable all Virtual Server entries.
4. Enter the following information on the page:

Enabled/Disabled: Enabled

Name: OTCWeb

Private IP: Type in the camera's IP address, for example: 192.168.0.3

Protocol Type: TCP

Private Port: 80

Public Port: 80
Schedule: Always

5. Click Apply to save the settings.
6. Enter the following information on the page:

Enabled/Disabled: Enabled
Name: VS-Box
Private IP: Type in the camera's IP address, for example: 192.168.0.3
Protocol Type: TCP
Private Port: 1600
Public Port: 1600
Schedule: Always

7. Click Apply to save the settings. The VS-Box should now be configured to work with your router and be accessible from the Internet.

For ID #1:

Service Port: 80
Server IP: Type in the camera's IP address, for example:
192.168.0.3
Enabled/Disabled: Enabled

For ID #2:

Service Port: 1600
Server IP: Type in the camera's IP address, for example:
192.168.0.3
Enabled/Disabled: Enabled

4. Save your settings. The VS-Box should now be configured to work with your router and be accessible from the Internet.

DI-714

1. Log into your router.
2. On the main page, click on Advanced Settings at the top of the page.
3. Click on Virtual Server Settings on the left side of the page.
4. Enter the camera's IP address into the Internal IP field. Under Service, select All and then click Submit to save your settings. The VS-Box should now be configured to work with your router and be accessible from the

Internet.

DI-714P+

1. Log into your router.
2. On the main page, click on Advanced at the top of the page.
3. On the left side of the page, click Virtual Server.
4. Enter the following information on the page:

For ID #1:

Service Port: 80
Server IP: Type in the camera's IP address, for example:
192.168.0.3
Enabled/Disabled: Enabled

For ID #2:

Service Port: 1600
Server IP: Type in the camera's IP address, for example:
192.168.0.3
Enabled/Disabled: Enabled

5. Click Apply to save your settings. The VS-Box should now be configured to work with your router and be accessible from the Internet.
Linksys (<http://www.linksys.com>)

EtherFast Cable/DSL Router - [BEFSR41]

Instant Broadband EtherFast Cable/DSL Firewall Router with 4-Port Switch/VPN EndPoint –

[BEFSX41]

Wireless Access Point Router with 4-Port Switch - Version 2 - [BEFW11S4]

1. Log into your router.
2. On the router's main page, click on Advanced at the top of the page.
3. On the next page, click on Forwarding.
4. Enter the following information on the page:

Line #1: Customized Applications: OTCWeb

Ext. Port: 80 to 80

Protocol: TCP
IP Address: Type in the camera's IP address, for example:
192.168.1.101
Enable: Checked in

Line #2: Customized Applications: VS-Box

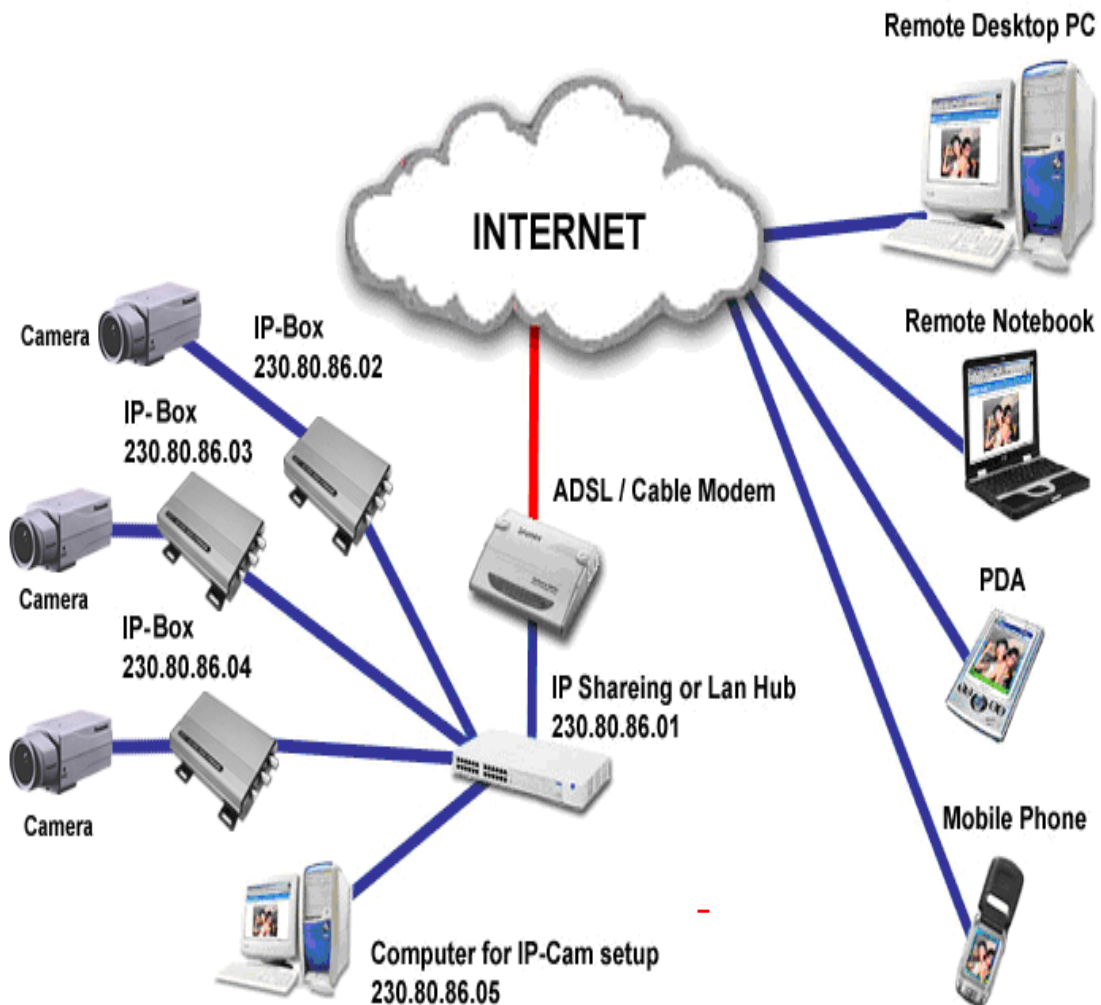
Ext. Port: 1600 to 1600
Protocol: TCP
IP Address: Type in the camera's IP address, for example:
192.168.1.101
Enable: Checked in

5. Click on Apply to save the settings. The VS-Box should now be configured to work with your router and be accessible from the Internet.

4. How to combine with VS-Box and webpage

VS-Box Installation Method 1:

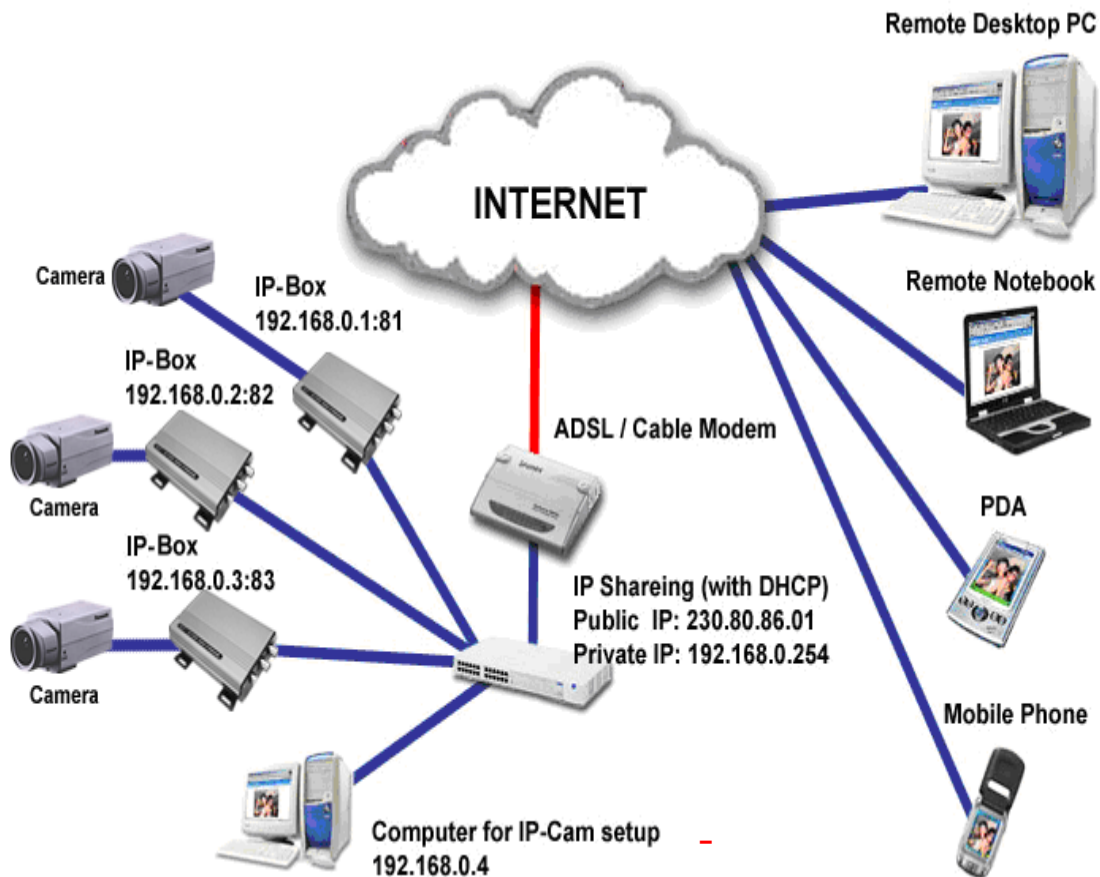
Internet Access Mode:	Leased Line, ADSL or Cable Modem
Real IP Address:	A few Static IP addresses required
IP Sharing or LAN Hub:	A Normal LAN switch or hub
VS-Box Network Setup:	LAN Enable / Manually
User:	User that have installed multiple VS-Box with multiple Static IP addresses



- ◆ Connect the given RED cable to your VS-Box and PC, and use the IPEDIT in the CD-ROM to set up the VS-Box
- ◆ Please refer to Page 3 for IP address setting.
- ◆ Assign individual VS-Box with a Static IP address.
- ◆ For remote viewing of VS-Box: launch IE browser and enter the Static IP address of the respective VS-Box. e.g. <http://230.80.86.02>

VS-Box Installation Method 2:

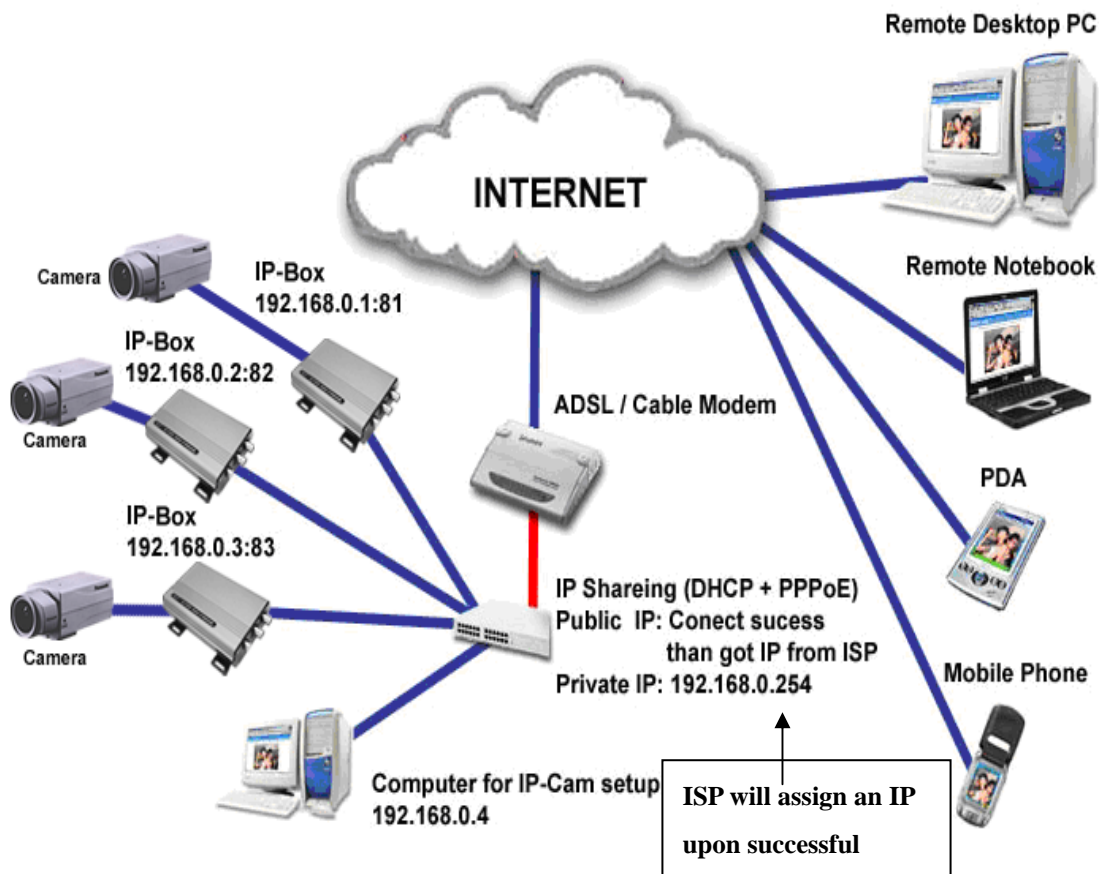
Internet Access Mode:	Leased Line, ADSL or Cable Modem
Real IP Address:	1 Static IP address required
IP Sharing or LAN Hub:	Enabled with DHCP function
VS-Box Network Setup:	LAN Enable (Manually) Web Server Port Number (Setting required)
User:	1 Static IP address and multiple VS-Box connected to the IP sharing switch or LAN Hub



- ◆ Public IP of the IP sharing switch have to set to a Static IP address (e.g.: 230.80.86.01), allocate another Private IP address, enable the DHCP function of the IP sharing Hub
- ◆ In each VS-Box IP address settings, assign each with different virtual IP, as well as different port number for the HTTP Port setting.
- ◆ For the setting of the Port switching of the IP sharing switch, please refer to the VS-Box's IP address and the Port sequence synchronization setting.
- ◆ For remote viewing of VS-Box: launch IE browser and enter the IP address of the IP Sharing switch and the Port Number of the VS-Box, e.g.: <http://230.80.86.01:81>

VS-Box Installation Method 3:

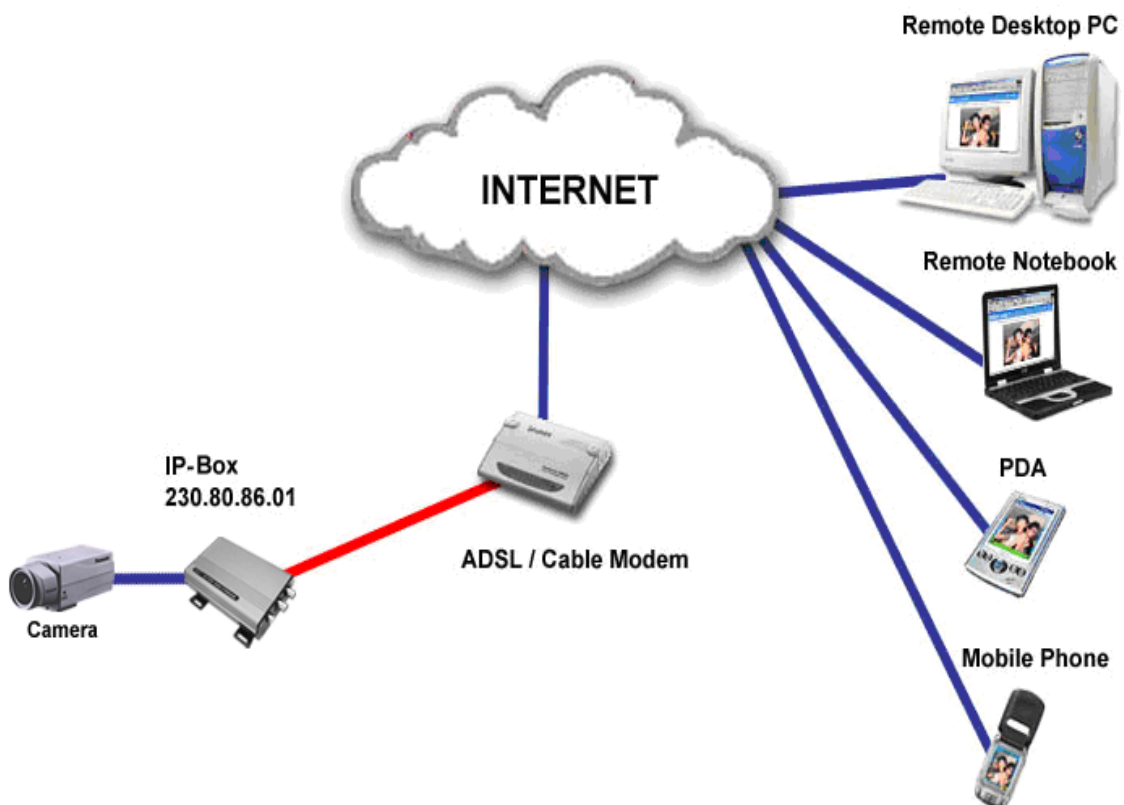
Internet Access Mode:	Dial-up ADSL or Cable Modem
Real IP Address:	A dynamic IP address provided by the ISP
IP Sharing or LAN Hub:	Enable DHCP and NAT function
VS-Box Network Setup:	LAN Enable (Manually) Web Server Port Number(setting required)
User:	ADSL dial-up user who installed multiple VS-Box with a dynamic IP address



- ◆ Activate PPPoE auto dial-up and connect to ADSL function of the IP sharing switch. Assign another Private IP address, enable the DHCP. Upon successful ADSL connection, a dynamic IP address will be allocated from the ISP
- ◆ In each VS-Box IP address settings, assign each with different virtual IP addresses, as well as different port number for the HTTP Port setting.
- ◆ For the setting of the Port switching in the IP sharing switch, please refer to the VS-Box's IP address and the Port sequence synchronization setting.
- ◆ For remote viewing of VS-Box: launch IE browser and enter the ADSL acquired dynamic IP address and the VS-Box's Port number, e.g.:
<http://230.80.86.01:81>

VS-Box Installation Method 4:

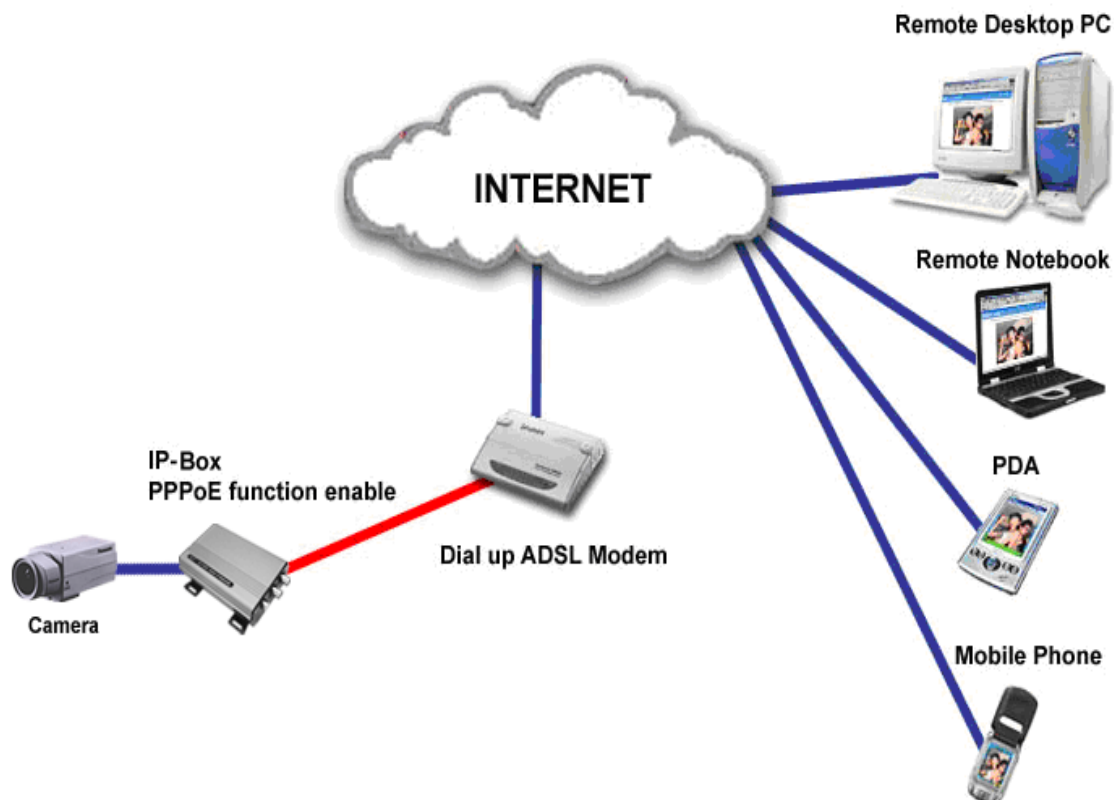
Internet Access Mode:	Leased Line ADSL or Cable Modem
Real IP Address:	1 Static IP address required
IP Sharing or LAN Hub:	Not required
VS-Box Network Setup:	LAN Enable (Manually) Web Server Port Number (Setting NOT required)
User:	Leased line ADSL user who installed 1 VS-Box with 1 Static IP address



- ◆ Check the IP address and the details of the remote VS-Box from the ISP
- ◆ Connect the given RED cable to your VS-Box and PC, and use the IPEDIT in the CD-ROM to set up the VS-Box
- ◆ Please refer to Page 3 for IP address setting.
- ◆ For remote viewing of VS-Box : launch IE browser and enter the VS-Box Static IP e.g.: <http://230.80.86.01>

VS-Box Installation Method 5:

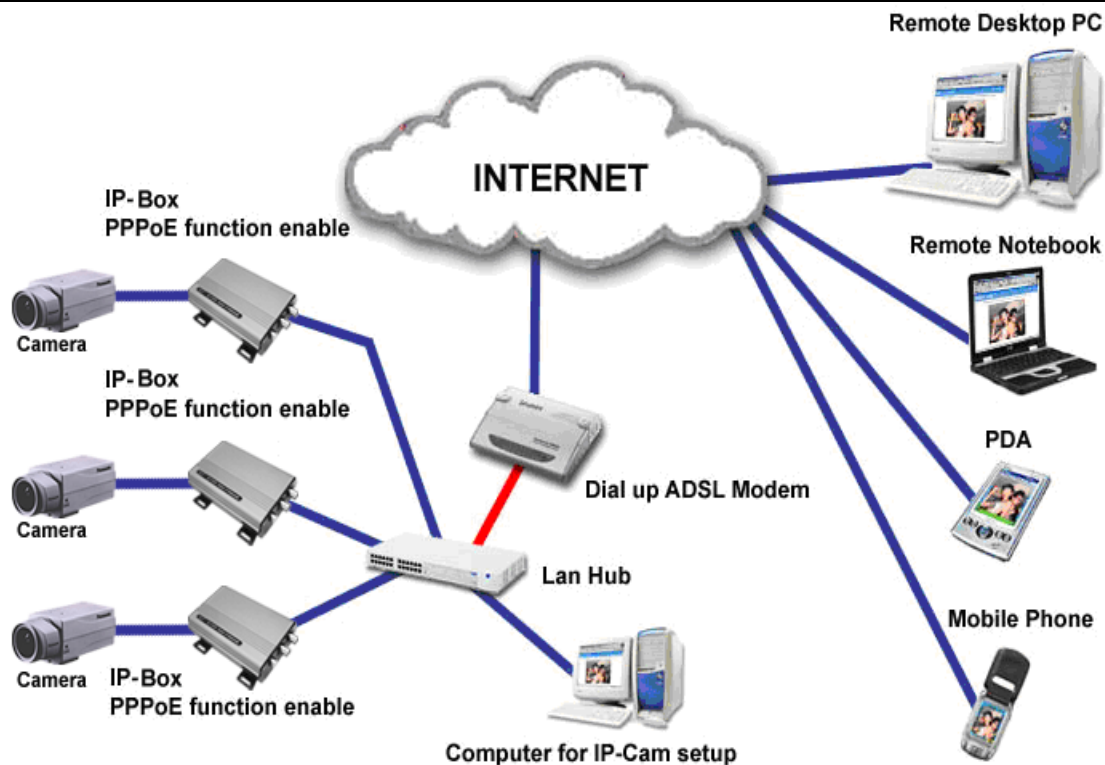
Internet Access Mode:	Dial-up ADSL or Cable Modem
Real IP Address:	A dynamic IP address provided by the ISP
IP Sharing or LAN Hub:	Not required
VS-Box Network Setup:	PPPoE function setting required LAN Enable / DHCP Web Server Port Number(Setting NOT required)
User:	ADSL dial-up user who install VS-Box



- ◆ Check ADSL dial-up properties from the ISP
- ◆ ISP details: ADSL User-id and password.
- ◆ Connect the given RED cable to your VS-Box and PC, and use the IPEDIT in the CD-ROM to set up the VS-Box
- ◆ Please refer to Page 3 for IP address setting.
- ◆ Launch IE browser of the designated PC, go to Network Setup, PPPoE to fill in the User-id and the password
- ◆ Click on Submit and wait for 5 seconds, disconnect the VS-Box power supply and install the Dial up ADSL Modem
- ◆ For remote viewing of VS-Box : launch IE browser and enter the Static IP address, e.g.: <http://230.80.86.01>

VS-Box: Installation Method 6:

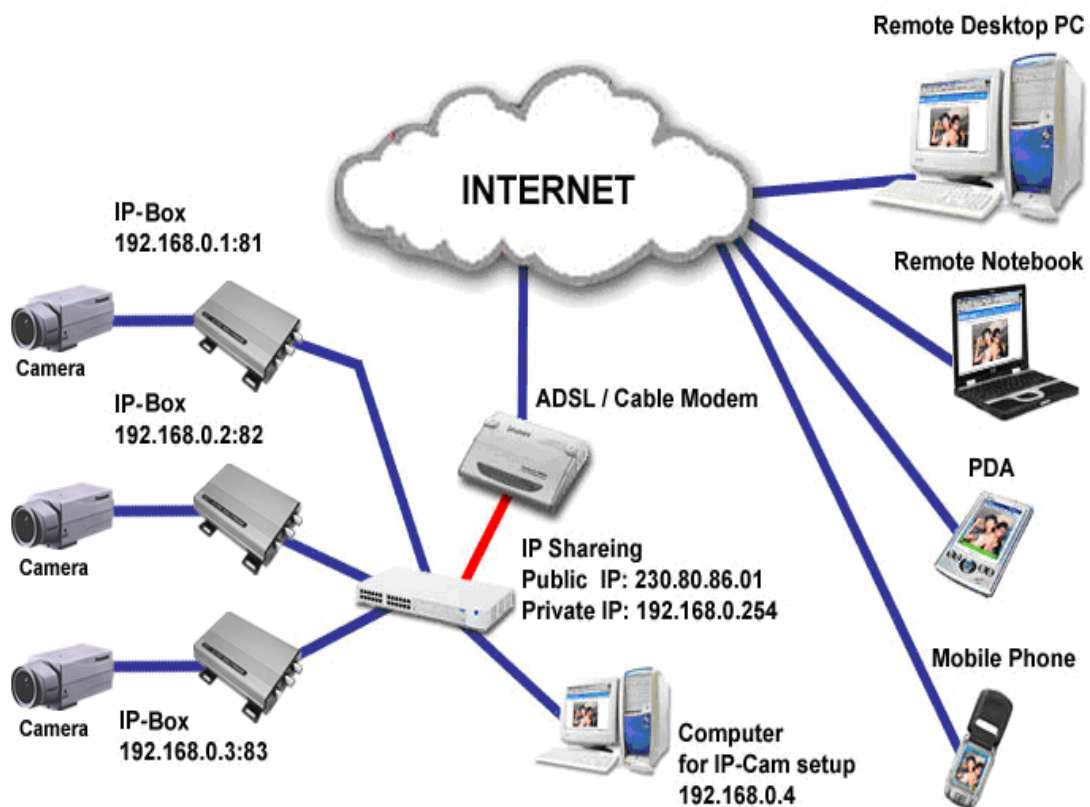
Internet Access Mode:	Dial-up ADSL or Cable Modem
Real IP Address:	A set of dynamic IP addresses provided by the ISP
IP Sharing or LAN Hub:	Must come with DHCP and NAT function
VS-Box Network Setup:	LAN Enable (Manually) Web Server Port Number (Setting required)
User:	1 Static IP address and multiple VS-Box installed



- ◆ Check ADSL dial-up properties from the ISP, ISP details: ADSL User-id and password.
- ◆ Connect the given RED cable to your VS-Box and PC, and use the IPEDIT in the CD-ROM to set up the VS-Box
- ◆ Please refer to Page 3 for IP address setting.
- ◆ Launch IE browser of the designated PC, go to Network Setup, PPPoE to fill in the User-id and the password
- ◆ Click on Submit and wait for 5 seconds, disconnect the VS-Box power supply and install the Dial up ADSL Modem
- ◆ Run 'IPEDIT' and locate the VS-Box's IP address assigned by the ISP
- ◆ Launch IE browser and enter the Static IP address of the VS-Box, e.g.: <http://230.80.86.01>
- ◆ Follow the sequence settings for each VS-Box

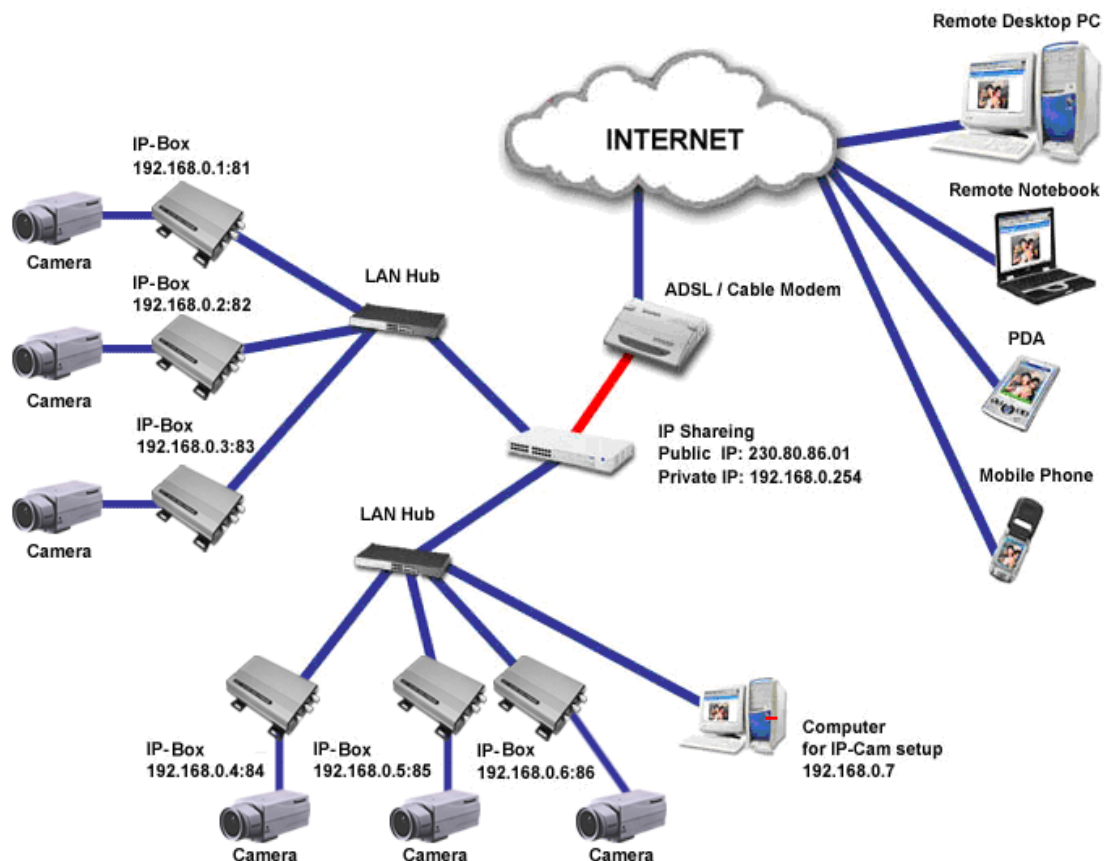
VS-Box Installation Method 7:

Internet Access Mode:	Leased Line, ADSL or Cable Modem
Real IP Address:	1 Static IP address required
IP Sharing or LAN Hub:	Must come with DHCP and NAT function
VS-Box Network Setup:	LAN Enable (Manually) Web Server Port Number (Setting required)
User:	1 Static IP address and multiple VS-Box installed



VS-Box Installation Method 8:

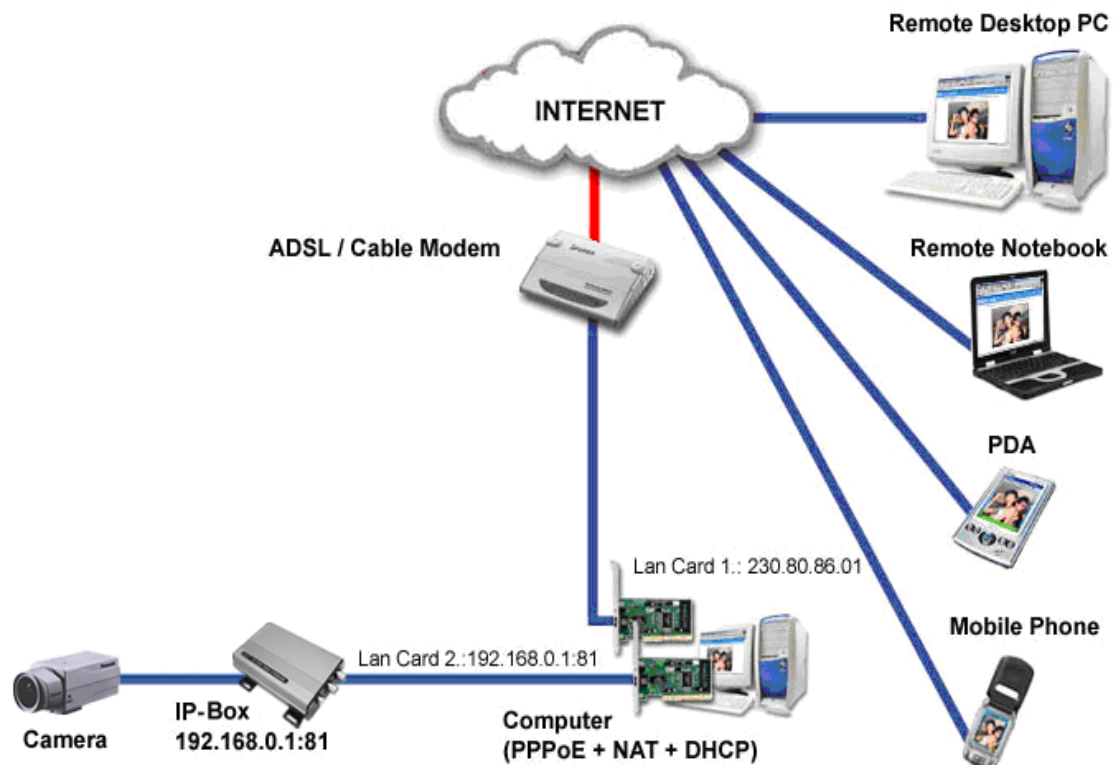
Internet Access Mode:	Leased Line ADSL or Cable Modem
Real IP Address:	1 Static IP address required
IP Sharing or LAN Hub:	Enable DHCP and NAT function
VS-Box Network Setup:	LAN Enable (Manually) Web Server Port Number (Setting required)
User:	1 Static IP address and multiple VS-Boxes installed to the multiple IP sharing switch



- ◆ Public IP of the IP sharing switch have to set to a Static IP address (e.g.: 230.80.86.01), allocate another Private IP address, enable the DHCP function of the IP sharing Hub
- ◆ In each VS-Box IP address settings, assign with different virtual IP, as well as different port numbers for the Http Port setting.
- ◆ For the setting of the Port switching of the IP sharing switch, please refer to the VS-Box's IP address and the Port sequence synchronization setting.
- ◆ For remote viewing of VS-Box : launch IE browser and enter the IP address of the IP Sharing switch and the Port Number of the VS-Box, e.g.: <http://230.80.86.01:81>

VS-Box Installation Method 9:

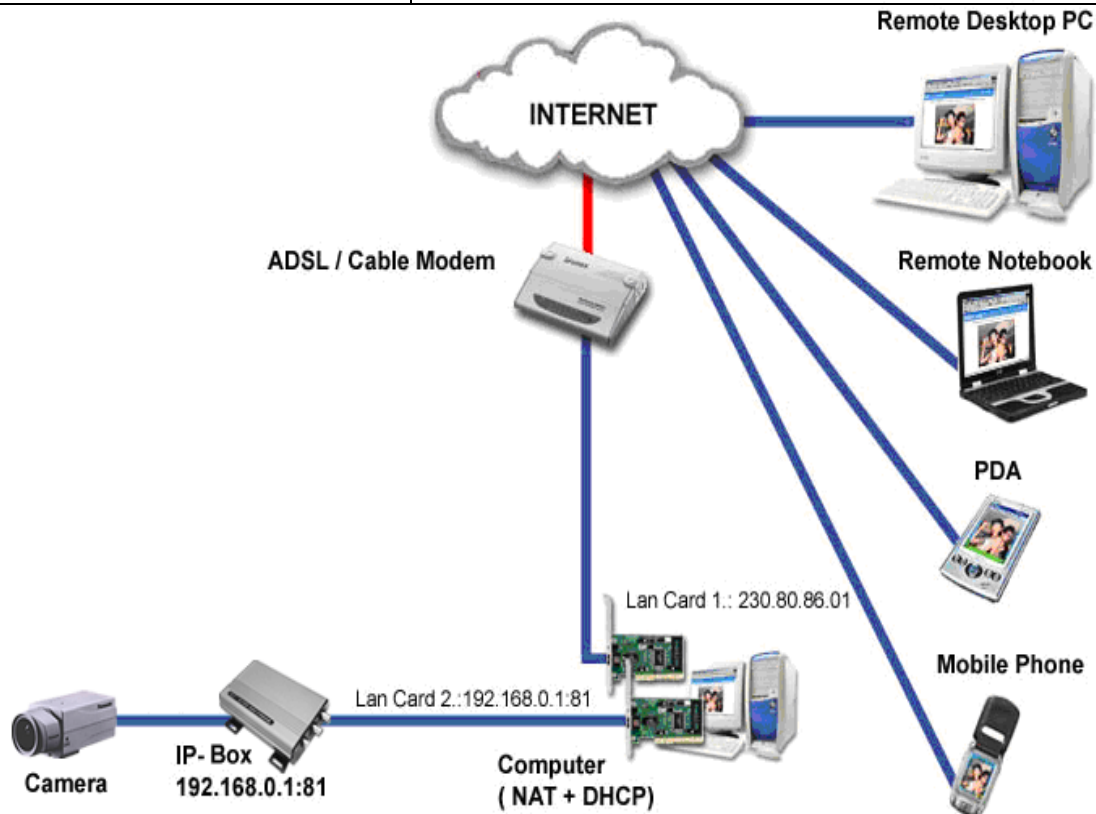
Internet Access Mode:	Dial-up ADSL or Cable Modem
Real IP Address:	A dynamic IP address provided by the ISP
IP Sharing or LAN Hub:	Must come with DHCP and NAT function
VS-Box Network Setup:	LAN Enable (Manually) Web Server Port Number (Setting required)
User:	1 VS-Box installed with a dynamic IP address, (PPPoE+2 LAN Cards +NAT+DHCP)



- ◆ Check ADSL dial-up properties from the ISP
- ◆ ISP details: ADSL User-id and password.
- ◆ Connect the given RED cable to your VS-Box and PC Network card (Lan Card 2)
- ◆ Use the IPEDIT in the CD-ROM to set up the VS-Box
- ◆ Please refer to Page 3 for IP address setting.
- ◆ Launch IE browser of the remote designated PC, go to Network Setup, PPPoE ADV to fill in the User-id and the password
- ◆ Click on Submit and wait for 5 seconds, disconnect the VS-Box power supply and install the Dial up ADSL Modem
- ◆ Synchronization NAT server Port Number to the VS-Box Port number
- ◆ Launch IE browser and enter the Dynamic IP address of the VS-Box, e.g.:
<http://230.80.86.01>

VS-Box Installation Method 10:

Internet Access Mode:	Leased Line ADSL or Cable Modem
Real IP Address:	1 Static IP address required
IP Sharing or LAN Hub:	Must come with DHCP and NAT function
VS-Box Network Setup:	LAN Enable (Manually) Web Server Port Number (Setting required)
User:	1 VS-Box installed with a Static IP address, (LAN Card+NAT+DHCP)



- ◆ Check ADSL dial-up properties from the ISP
- ◆ ISP details: ADSL User-id and password.
- ◆ Connect the given RED cable to your VS-Box and PC Network card (Lan Card 2)
- ◆ Use the IPEDIT in the CD-ROM to set up the VS-Box
- ◆ Launch IE browser of the remote designated PC, go to Network Setup, PPPoE ADV to fill in the User-id and the password
- ◆ Click on Submit and wait for 5 seconds, disconnect the VS-Box power supply and install the Dial up ADSL Modem
- ◆ Synchronization NAT server Port Number to the VS-Box Port number
- ◆ Launch IE browser and enter the Dynamic IP address of the VS-Box, e.g.:
<http://230.80.86.01>