

DIBAL

LP-2500 Series Labellers

New
LP-2553
Models



 **North Meat Ltd.**

Weight (kg)	Price (£/kg)	Total (£)
2.325	10.15	23.60

SIRLOIN STEAK

PACK DATE 15.10.02 USE BY 20.10.02

RF. number: 050202 924324
Slaughtered in: 1234
UNITED KINGDOM
Cutting in: 4932
UNITED KINGDOM
Born in: IRELAND
Raised in: IRELAND
Age: 24MONTHS
Type of animal: CALF



WASHERS

WEIGHT K9 N 1.265

2 000019 002970

DIBAL

SPECIAL PIZZA

INGREDIENTS: CRUST, CHEESE, TOMATO, TUNA, OLIVES, PRAWNS.

PACK DATE	09.07.02	
USE BY	29.11.02	
WEIGHT K9	€/K9	TOTAL
N 0.955	5.20	4.97 €

2 000002 004974

PRESERVE COLD

Double use:
stand alone **labellers** or
platform indicators with printer

LP-2500 Series

Labellers

The complete labelling solution for the retail and industrial needs

General features

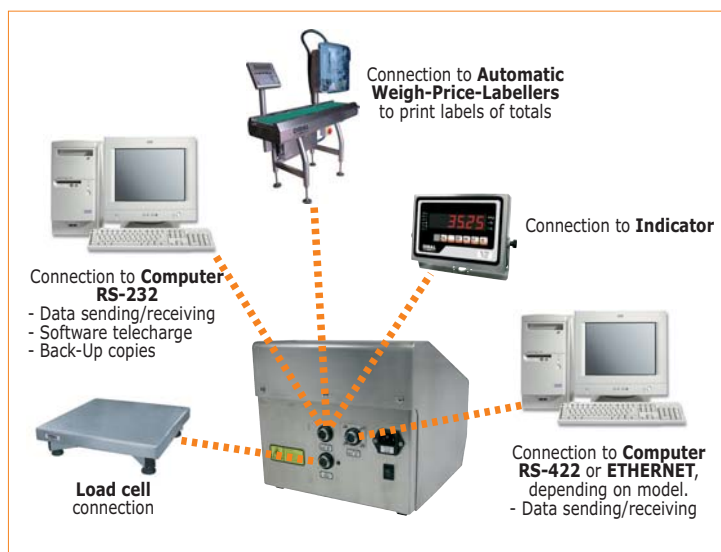
- They can be used as stand alone printers or as platform indicators (6.000 divisions OIML / up to 120.000 NON OIML. Mono-range, multi-range or multi-interval mode, programmable by the user).
- **Stainless steel built.**
- **Back-light LCD alphanumerical display.**
- **1.000 articles** in memory, with 3 lines of 20 characters for the description and/or ingredients. Also, 100 of the articles allow an additional text line with capacity for 252 characters or 128 ingredients (or any combination of texts and ingredients).
- **32+32 pre-sets.**
- **4+4 operators**, a 5 figure code and 20 character name.
- **10 sections**, with name and bar codes: EAN-13 / EAN-128.
- **10 pre-set tares** and a **tare associated** to each article.
- **Up to 4.000 ingredients**, stored in RAM memory.
- **Mains supply (110, 230 Vac).**
- **Dimensions** (width x height x depth): 255 x 230 x 270 mm.
- **Weight:** 7.3 kg.

Printing functions



- Thermal printer for **label paper, continuous adhesive paper or receipts.**
- **High resolution:** 8 dots/mm.
- **Maximum label size:** 150 x 60 mm.
- **Printing area:** 150 x 54 mm.
- **Cassette system paper replacement.**

- **3 dates:** packing, use by and best before.
- **3 levels of totals** (e.g.: box / pallet / truck).
- **Re-print function:** allows you to re-print the last issued label.
- **Label batches printing**, controlled by key pressing, timer or detection of the last removed label.
- **Cancellation of labels**, deleting them from accumulated totals.
- **Logos** (PC load, by optional RMS application).
- **Bar codes:** EAN-8 / 13 / 128, 3 of 9, 2 of 5 and UPC.
- **20 label formats** programmable by the user.
- **80 fields** for each label format.
- **Beef labelling** according to current European regulation.
- **Reports:** by article, operator, section,...

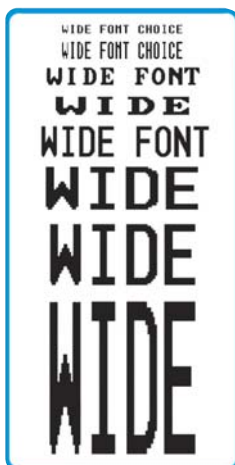


Communications

- **External load cell connection**, for weight reception.
- **Computer connection: RS-232/422 or optional Ethernet.** Optional DIBAL RMS Windows application for article sending, reception and management, logo load, label graphic design, data back-up, etc.
- **Connection to external platform indicator.**
- **Label printing from PC or from Dibal Automatic Weigh-Price-Labellers.**
- **Internal software updates from PC** (flash memory).

Models

Model	Communications
LP-2553	To computer (RS-232/422), to indicator (RS-232) and to Dibal Automatic Weigh-Price-Labellers (RS-232).
LP-2553 ETH	To computer (RS-232 and Ethernet), to indicator (RS-232) and to Dibal Automatic Weigh-Price-Labellers (RS-232).



LP-2500 Series / ING / 4° / 03-08. Specifications subjected to change without prior notice.



DIBAL, S.A. - Astintze, 24 (Pol. Ind. Neinver) 48160 Derio (Vizcaya) Spain
Tel.: (+34) 94 452 15 10 - Fax: (+34) 94 452 36 58
http://www.dibal.com - E-mail: dibal@dibal.com