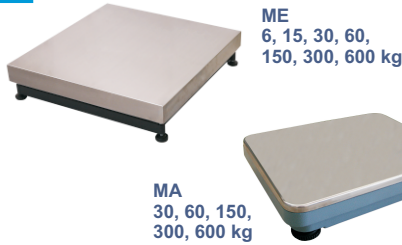


IRON / STAINLESS STEEL Single Load Cell Platf. - ME, MA SERIES

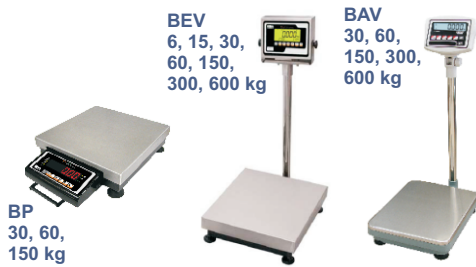


- **Serie ME** - 30x30, 40x40, 60x60, 80x80 cm. 3 versions:
 - Iron with stainless steel plate and aluminium loadcell.
 - Iron with stainless steel plate and protected aluminium loadcell.*
 - Structure, plate and loadcell in stainless steel.
- Optional accessories: Iron column kits for Dibal VD-310 ABS and Cely VC-40 and VC-50 M indicators, and stainless steel column kits for Dibal VD-310 St. Steel and VD-330 St. Steel and Cely VC-80 I indicators.
- **MA Series** - 35x45, 42x52, 60x80 cm.
Steel platforms (42x52 cm model in aluminium).
Stainless steel plate.



* Platforms not suitable for salty environments.
Available capacities: 60, 150 or 300 kg.

IRON / ST. STEEL SINGLE LOAD CELL Bench Scales - BP, BEV, BAV SERIES

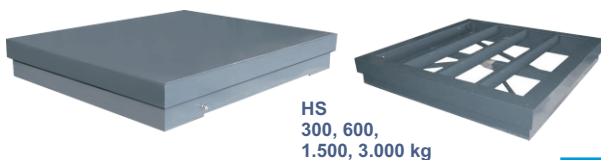


- **BP Series:** Portable scale in iron, with 40x40 cm stainless steel plate and folding grip. VD-310 LED or VD-330 LCD Battery indicator.
- **BEV Series:** 30x30, 40x40, 60x60 or 80x80 cm platform, in iron with aluminium or protected aluminium loadcell*, column and Dibal VD-310 ABS, VD-310 St. Steel and VD-330 St. Steel Battery or Cely VC-40, VC-50 M and VC-80 I indicator. Also available versions with stainless steel platform and stainless steel indicator (Dibal VD-310 St. Steel, VD-330 St. Steel Battery or Cely VC-80 I).
- **BAV Series:** 35x45, 42x52 or 60x80 cm platform, column and Dibal VD-310 ABS or Cely VC-40, VC-50 M and VC-80 I indicator.



* Platforms not suitable for salty environments.
Available capacities: 60, 150 or 300 kg.

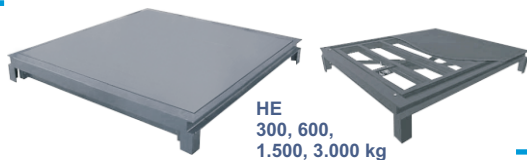
HYBRID Floor Platforms - HS SERIES



- 100x100, 100x125, 125x125, 125x150, 150x150, 150x200 cm.
- 3 versions:
 - Painted iron.
 - Painted iron with stainless steel plate.
 - Stainless steel.
- Stainless steel load cell (IP-68).



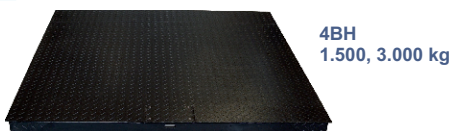
HYBRID Built-in Platforms - HE SERIES



- 100x100, 100x125, 125x125, 125x150, 150x150, 150x200 cm.
- 3 versions: painted iron, painted iron with stainless steel plate, or stainless steel.
- Stainless steel load cell (IP-68).
- Built-in installation with no need of additional frame.



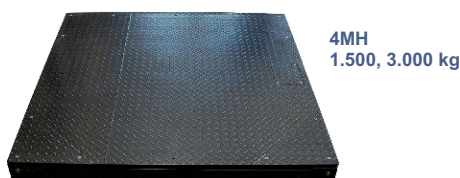
IRON 4 LOAD CELLS Floor Platforms - 4BH SERIES



- 120x120, 150x150 cm.
- 3-5 mm thick diamond plate. Black enamel.
- Steel framework, in cold formed sheet (2 mm thick).
- 4 steel load cells (IP-67). Stainless steel junction box (IP-64).
- Adjustable feet. Options: Access ramp and column for indicator.



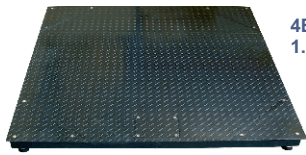
IRON 4 LOAD CELLS Floor Platforms - 4MH SERIES



- 120x120, 120x150, 150x150, 150x200 cm.
- 5-7 mm thick diamond plate. Black enamel.
- Steel framework, "U" hot-rolled profile.
- The frame is included to protect it against lateral bumps.
- Platform settlement with ball and socket joint.
- Individual access to load cells with no need to raise the platform.
- 4 steel load cells (IP-67). Stainless steel junction box (IP-66).



4 LOAD CELLS Floor or Built-In Platforms - 4EH SERIES



4EH
1.500, 3.000 kg

- 120x120, 120x150, 150x150 cm.
- 5-7 mm thick diamond plate. Black enamel.
- Steel framework, "U" hot-rolled profile. Adjustable feet.
- Individual access to load cells (with no need to raise the platform).
- 4 steel load cells (IP-67). Stainless steel junction box (IP-66).
- Options: ramp, frame and cubicle to pit, column for indicator.



ST. STEEL 4 LOAD CELLS Floor or Built-In Platforms - 4EI SERIES



4EI
1.500, 3.000 kg

- 120x120, 120x150, 150x150 cm.
- 4 mm thick stainless steel plate. Tubular framework. Adjustable feet.
- Access to the load cells with no need to raise the platform.
- 4 stainless steel load cells (IP-67). Stainless steel junction box (IP-66).
- Options: ramp, frame and cubicle to pit, column for indicator.



4 LOAD CELLS IRON LOW PROFILE Platforms - BPH SERIES

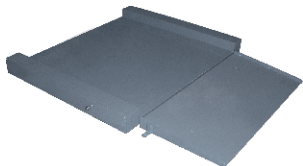


BPH
1.500 kg
2 access ramps included

- 120x120, 150x150 cm.
- 5-7 mm thick diamond plate. 2 folding access ramps included.
- Steel framework, in cold formed sheet 3 mm thick.
- Lateral access to the junction box.
- 4 steel load cells (IP-67). Stainless steel junction box (IP-64).



4 LOAD CELLS STAINLESS STEEL LOW PROFILE Platforms - BPI SERIES

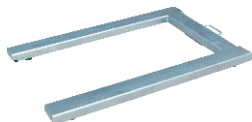


BPI
1.500, 3.000 kg
1 access ramp included

- 125x125, 150x150 cm.
- Stainless steel structure. Tubular framework.
- One access ramp included, optional second ramp.
- Lateral access to the junction box and load cells.
- 4 stainless steel load cells.
- Adjustable feet.



IRON / STAINLESS STEEL PALLET WEIGHT - PU SERIES



PU
1.500 kg

- 125x84 cm.
- 2 Versions: painted iron or stainless steel.
- Structure of "U" cold-formed profile.
- 4 load cells in steel or stainless steel, depending on model.
- Stainless steel junction box (IP-67).



WEIGHING PALLET TRUCK - TP SERIES



TP
2.000 kg

- Backlight LCD display, 5 1/2 digits of 52 mm.
- 4 load cells.
- Functions: automatic zero tracking, weight conversion (kg / lb), pre-tare, gross/net weight and accumulation.
- Rechargeable battery powered.

WALL Platforms - MI SERIES



MI
150, 300 kg

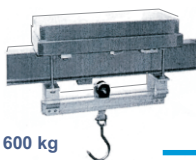
- Construction in stainless steel.
- Stainless steel load cell.
- Weighing on plate or from hook.
- Hook height: 108 mm over the plate.
- 55 x 55 cm folding plate.



AERIAL Scales - AG1 & AI2 SERIES



AG1
150, 300,
600 kg



AI2
300, 600 kg

- **AG1 Series:** Painted iron structure with 1 steel loadcell, or stainless steel structure with 1 stainless steel loadcell (IP-67).
- **AI2 Series:** Galvanized steel structure covered with stainless steel and with 2 aluminium or stainless steel loadcells.

