

ZC 3010 / ZC 3020

4 Axis Aluminium Machining Center

Designed to make machining operations of **aluminium, plastic, wooden materials** and **steel** profiles up to 5 mm.



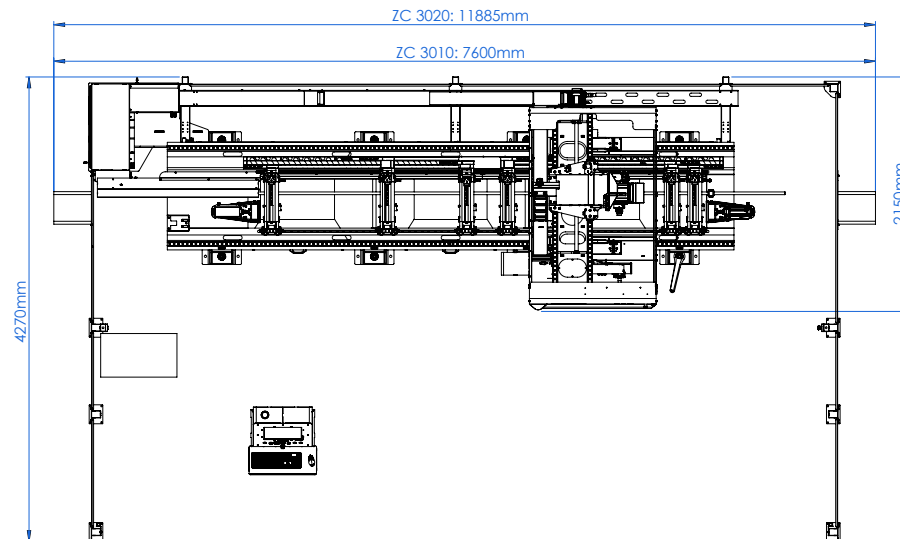
ZC 3010 General Features

- Robust mechanical design suitable for high speeds.
- Stress relieving treatment is made on each casted and welded part in order to provide continuous precision.
- Maximum performance thanks to high quality materials used on its production.
- Long-lived moving parts thanks to automatic greasing system.
- Standard model has 3 dust containers and 6 clamps.
- Mitsubishi CNC M720VW control unit, internal HDD, optical communication, high speed and precision, 0,001 micron command enhancement and ethernet interface.
- TWINSYSTEM: Bizonal non stop operation, right left double piece connected operation facilities.



ZC 3020 General Features

- Robust mechanical design suitable for high speeds.
- Stress relieving treatment is made on each casted and welded part in order to provide continuous precision.
- Maximum performance thanks to high quality materials used on its production.
- Long-lived moving parts thanks to automatic greasing system.
- Standard model has 5 dust containers and 10 clamps.
- Mitsubishi CNC M720VW control unit, internal HDD, optical communication, high speed and precision, 0,001 micron command enhancement and ethernet interface.
- TWINSYSTEM: Bizonal non stop operation, right left double piece connected operation facilities.



ZC 3010 / ZC 3020

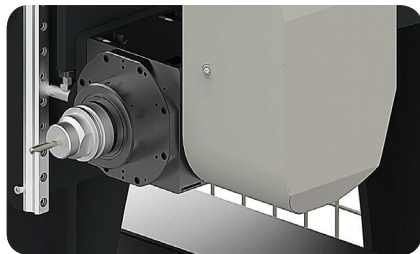
4 Axis Aluminium Machining Center

Control Panel



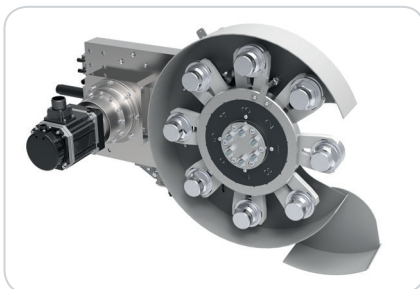
- User friendly and flexible operation system.
- Mitsubishi CNC Control unit.
- Uni-Link CAM software program:
 - Connects to all production softwares.
 - High performance machine management.
 - Compatible to optimization programs.
- Easy parameter settings.
- Periodical maintenance reminder function.
- ISO programming language
- Service support with wireless connection.
- Usb and COM port inputs.

Spindle



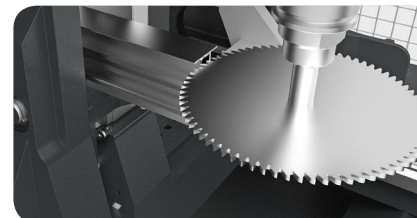
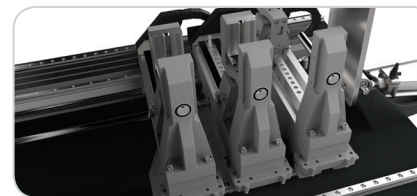
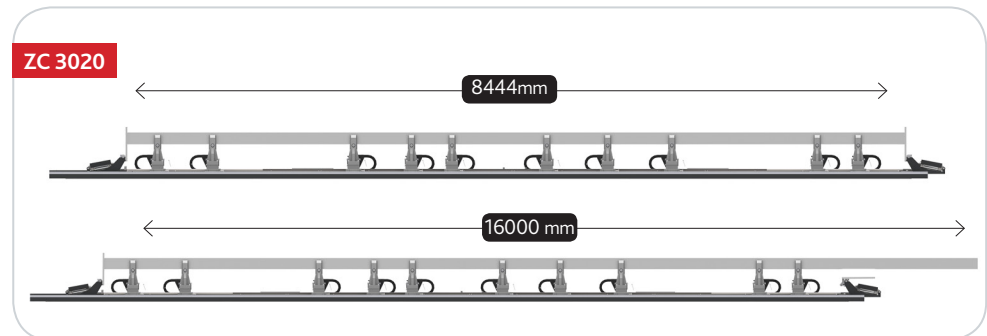
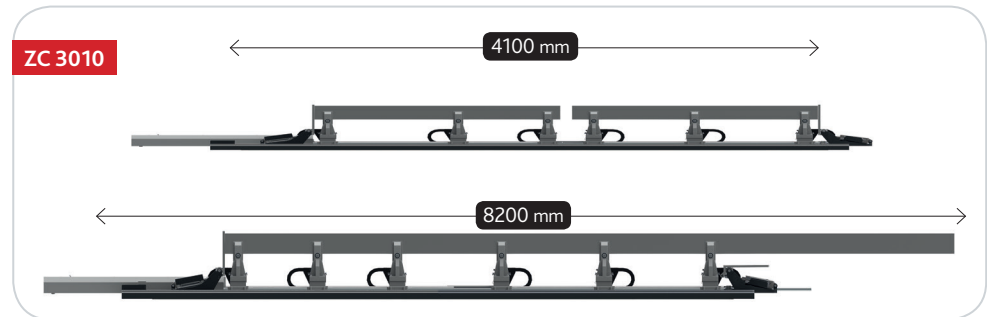
- 0,01° range positioning thanks to the servo control whose torque is increased with harmonic driver.
- HSD branded 12 kW max. 24.000 c/m.
- Liquid cooled motor.
- Automatic tool change.
- HSK Tool holder.
- Tool cooling system.

Magazine



- 8 tool capacity magazine.
- Tool changing in 8 seconds.
- Easy access to magazine from front side.
- Saving of time by tool changing while passing from one process to other one on piece.

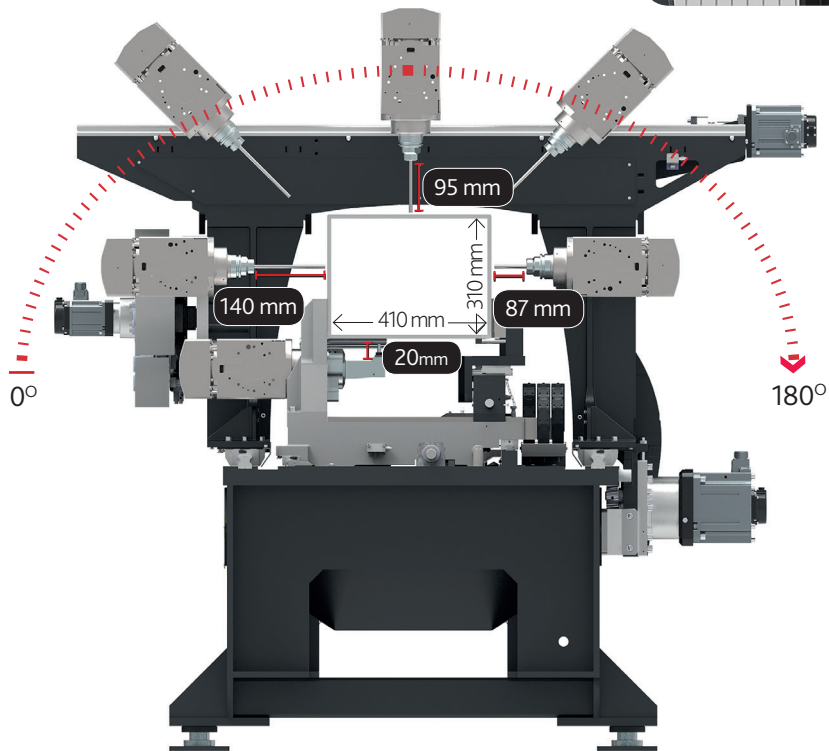
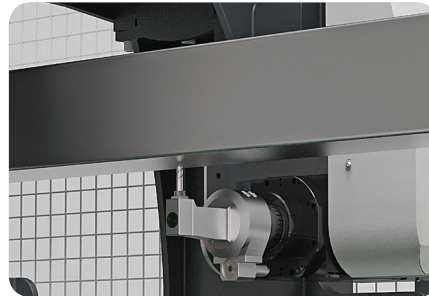
Clamps



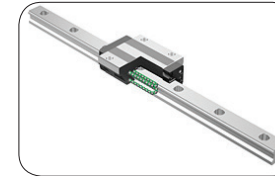
- Clamp fix side is at front in order to provide ease of profile loading.
- Standard modul has 6 clamps.
- Ease of profile sliding on clamps surfaces as the profile seats have roller system.
- Servo controlled automatic clamp positioning regarding to the receipt of the piece to be machined.
- Double sided profile support system.
- Profile machining facility at long lengths. Cutting of profile ends with Ø200 mm saw.

A Axis

- Machining of aluminium, plastic, wooden materials and steel profiles up to 5mm at width and height values mentioned in picture.
- Tool lengths according to direction and piece is mentioned in below picture.
- 4 Axis simultaneous operation feature.



Bearing System



- High quality bearings suitable for high speeds whose gap class is zero.

Technical Features

	ZC 3010	ZC 3020
Axis		
Y Axis Servo Motor	1 x 1,5 kW	1 x 1,5 kW
X Axis Servo Motor	1 x 3,5 kW	1 x 3,5 kW
Z Axis Servo Motor	1 x 1 kW	1 x 1 kW
A Axis Servo Motor	1 x 0,75 kW	1 x 0,75 kW
X Axis Rapid Speed	144 m/min	144 m/min
Y Axis Rapid Speed	40 m/min	40 m/min
Z Axis Rapid Speed	30 m/min	30 m/min
A Axis Rapid Speed	360° / sec	360° / sec
X Axis Reductor Planet	SD140	SD140
Spindle Motor HSD ES779	1 x 12 kW max. 24000 d/d	1x 12 kW max. 24000 d/d
Clamp Positioning Motor		
Servo Motor	1 x 0,75 kW	1 x 0,75 kW
Magazine Motor		
Servo Motor	1 x 0,75 kW	1 x 0,75 kW
Machine Dimensions		
Height	2715 mm	2715 mm
Width	4260 mm	4260 mm
Length	7600 mm	18885 mm
Weight	5000 kg	7000 kg
Air		
Pressure	6-8 bar	6-8 bar
Consumption		
Screen		
	17"lcd	17"lcd
Communication		
	Ethernet	Ethernet
	USB	USB
Software		
Control	Mitsubishi CNC M720VW	Mitsubishi CNC M720VW
CAD / CAM	Uni-Link Software	Uni-Link Software
Electricity		
Voltage	400V (L-1L-2L-3N-PE) 60/50 Hz	400V (L-1L-2L-3N-PE) 60/50 Hz
Power	23 kW	23 kW