

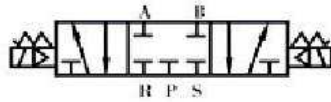
## Double Solenoid Valves



		<b>B CC --- 52 18</b>	
Model	Model		Port Size
S :	Special Body	52 :	5 port 2 position
M :	Maxi	53 :	5 port 3 position
N :	Namur		
C :	Closed Center		
O :	Opened Center		
CM :	Closed Center Maxi		
			18 : 1/8"
			14 : 1/4"
			12 : 1/2"

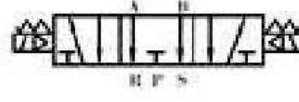
5/3

Closed Center



5/3

Open Center



Model	BCC 5218	BCC 5214	BCCM 5214	BCCN 5214	BCCS 5214	BCC 5212	BCCO 5314	BCCC 5314	BCCCM 5314	BCCC 5312
Port Size	in:1/8" out:1/8" exhaust:1/8"	in:1/4" out:1/4" exhaust:1/8"	in:1/4" out:1/4" exhaust:1/4"	in:1/4" out:1/4" exhaust:1/4"	in:1/4" out:1/4" exhaust:1/8"	in:1/2" out:1/2" exhaust:1/2"	in:1/4" out:1/4" exhaust:1/8"	in:1/4" out:1/4" exhaust:1/8"	in:1/4" out:1/4" exhaust:1/4"	in:1/2" out:1/2" exhaust:1/2"
Valve Type	5 yol 2 konumlu				5 port 2 position		5 yol 3 konumlu		5 port 3 position	
Operating Type	Piloted and with spring									
Fluid	Hava / Air									
Orifice Size	14 mm <sup>2</sup> Cv = 0,76	16 mm <sup>2</sup> Cv = 0,89				50 mm <sup>2</sup> Cv = 2,79	12 mm <sup>2</sup> Cv = 0,67		30 mm <sup>2</sup> Cv = 1,67	
(°C) Temperature	0~60									
Operating Pressure	1.5-8		2-10		1.5-8		2-10		1.5-8	
Min. Activating Time	≤ 10 ms						≤ 20 ms			
Max. Frequency	5 cycle / s						3 cycle / s			
Standard Voltage	24v AC 24v DC 220v AC		12v AC, 12v DC, 24v AC, 24v DC, 110v AC, 220v AC							