

Fresh Cheese Moulds
Ricotta Moulds
Microperforated Moulds
Feta Moulds
Block - Moulds



Microperforated Moulds and Multimoulds For Cheese

DEXWOR

Microperforated Moulds injected in one piece with triangular perforations allowing perfect dewheying, avoiding volcano effect due to circular perforation making whey bags inside the cheese and possibility to microperforate whatever shape.

Mould built in PE (Polyethylene) or PP (Polypropylene).

Several models in stock and possibility to make new shapes and dimensions according to quantities.

Possibility to make multimoulds to fill several moulds at the same time.

Rectangular Model:

Bars for slicing

Cylindrical Model:

Round shape with right angles

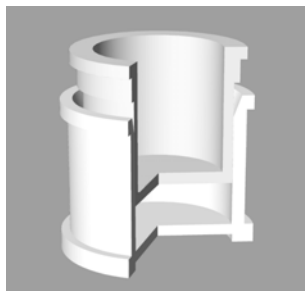
Prato Model:

Circular shape with slight round angles.

Gouda Model:

Circular shape with round angles.

Several other shapes (pyramid, planet ...)



MICROPERFORATED MOULDS



CODE	DIAMETER	HEIGHT	WEIGHT
MCL.108.125.140	108	50	0,50 Kg.
MCL.110.140.140	110	60	0,50 Kg.
MCL.125.150.155	125	100	1 Kg.
MCL.130.170.175	130	100	1 Kg.
MCL.145.140.185	145	80	1,2 Kg.
MCL.170.170.215	170	100	2 Kg.
MCL.190.180.240	190	100	2,5 Kg.
MCL.206.175.240	206	100	3 Kgs
MCL.300.220.360	300	120	8 Kgs



CODE	BASE	HEIGHT	WEIGHT
MRC.280.187.110	280X110	110	3,5 Kg.
MRC.320.187.110	320X110	110	4,5 Kg.
MRC.220.170.100	220X100	100	2 Kg.



CODE	DIAMETER	HEIGHT	WEIGHT
MMG.108.125.140	108	60	0,5 Kg.
MMG.206.180.240	206	100	3 Kgs.
MMG.230.200.260	230	120	4 Kgs.
MMG.255.170.285	255	100	4 Kgs.
MMG.300.220.360	300	120	8 Kgs.



CODE	DIAMETER	HEIGHT	WEIGHT
MPT.108.125.140	108	60	0,5 Kg.
MPT.110.170.140	110	60	0,5 Kg.
MPT.128.140.170	128	80	1 Kg.
MPT.128.170.170	128	80	1 Kg.
MPT.145.170.170	145	80	1,2 Kg.
MPT.150.115.180	150	80	1,2 Kg.
MPT.180.170.215	180	100	2 Kgs.
MPT.206.175.240	206	100	3 Kgs.

MICROPERFORATED MOULDS



CODE	DIAMETER	HEIGHT	WEIGHT
MMA.105.120.140	105	60	0,5 Kg.
MMA.125.170.175	125	100	1 Kg.
MMA.140.160.170	140	100	1,2 Kg.
MMA.175.160.210	175	100	2 Kg.
MMA.195.175.230	195	100	3 Kg.
MMA.202.175.240	202	100	3,2 Kg.
MMA.206.175.240	206	100	3,5 Kgs.
MPT.206.175.240	206	100	3 Kgs.



CODE	BASE	HEIGHT	WEIGHT
MRC.500.300.170	500 x 300	100	15 Kg.

New Moulds 11" x 14" 20 lbs or 40 lbs for Cheddar type cheese

New Model 21" x 14"

Fresh Cheese Moulds
Ricotta Moulds
Microperforated Moulds
Feta Moulds
Block - Moulds



TRADITIONNAL CHEESE MOULDS



PERFORATED MOULD ANTIPASTI		
CODE	33753	33753
Dim. Moule	36x32	49x36
Capacity in Kg	-	-
Ø internal bottom	33	43
Ø internal top	36	49
Ø external bottom	32	45
Ø external top	40	54
External Height	32	36
Internal Height	31	35
Feet	non	non



PERFORATED MOULD LOW TYPE					
CODE	33707	33708	33709	33710	33711
Mould Dim	70x70	80x70	90x70	100x70	130x70
Capacity in Kg	-	-	-	-	-
Ø internal bottom	57	68	78	86	105
Ø internal top	69	82	91	100	120
Ø external bottom	60	72	82	91	110
Ø external top	76	90	100	110	130
External Height	75	74	76	77	77
Internal Height	69	69	69	70	69
Feet	oui	oui	oui	oui	oui

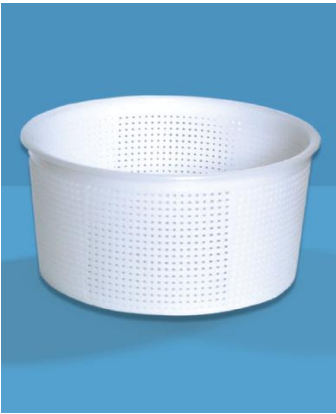


CODE	33712	33713	33714	33715	33716
Mould Dim	140x65	150x70	160x70	170x75	180x75
Capacity in Kg	-	-	-	-	-
Ø internal bottom	116	124	133	145	154
Ø internal top	130	136	146	158	166
Ø external bottom	122	128	138	150	159
Ø external top	137	148	155	170	177
External Height	77	77	77	80	80
Internal Height	69	68	70	71	72
Feet	oui	oui	oui	oui	oui



CODE	33717	33718	33719	33721
Mould Dim	190x75	195x80	200x100	220x105
Capacity in Kg	-	-	-	-
Ø internal bottom	164	165	182	211
Ø internal top	176	181	198	217
Ø external bottom	167	173	192	216
Ø external top	185	193	207	227
External Height	85	82	98	107
Internal Height	75	78	94	104
Feet	oui	non	non	non

TRADITIONNAL CHEESE MOULDS



PERFORATED MOULD LOW TYPE WITH ADDITIONNAL PERFORATIONS	
CODE	33720 T.N.
Mould Dim	200x100
Capacity in Kg	-
Ø internal bottom	186
Ø internal top	200
Ø external bottom	190
Ø external top	207
External Height	104
Internal Height	100
Feet	non



PERFORATED MOULD HIGH TYPE				
CODE	33722	33723	33725	33726
Mould Dim	100x130	150x150	160x160	180x160
Capacity in Kg	-	-	-	-
Ø internal bottom			148	148
Ø internal top	92	144	161	187
Ø external bottom	97	150	153	183
Ø external top	97	147	172	202
External Height	107	160	165	162
Internal Height	130	155	161	159
Feet	126	151	non	non



PERFORATED MOULD			
CODE	34714	33736	33737
Mould Dim	73x90	100x110	120x110
Capacity in Kg	-	-	-
Ø internal bottom	68	98	104
Ø internal top	73	105	118
Ø external bottom	75	104	116
Ø external top	82	116	132
External Height	90	112	113
Internal Height	92	109	109
Feet	oui	non	non



PERFORATED MOULD			
CODE	33738	33739	33741
Mould Dim	140x100	160x150	210x160
Capacity in Kg	-	-	-
Ø internal bottom	132	153	202
Ø internal top	144	166	215
Ø external bottom	143	162	215
Ø external top	158	176	230
External Height	101	154	161
Internal Height	98	148	157
Feet	non	non	non

TRADITIONNAL CHEESE MOULDS



PERFORATED MOULD HIGH EDGE

CODE	33763	33764
Mould Dim	120x135	140x135
Capacity in Kg	-	-
Ø internal bottom	104	132
Ø internal top	123	148
Ø external bottom	116	143
Ø external top	126	151
External Height	137	137
Internal Height	135	135
Feet	non	non



PERFORATED MOULD ROUND EDGE

CODE	33744	33745
Mould Dim	170x160	155x165
Capacity in Kg	-	-
Ø internal bottom	160	153
Ø internal top	170	157
Ø external bottom	160	155
Ø external top	182	162
External Height	170	160
Internal Height	167	157
Feet	non	non



PERFORATED MOULD OVAL

CODE	33742
Mould Dim	153x111x150
Capacity in Kg	-
Ø internal bottom	75-122
Ø internal top	113-158
Ø external bottom	107-145
Ø external top	170-125
External Height	150
Internal Height	155
Feet	non



PERFORATED MOULD HEXAGONAL

CODE	33743
Mould Dim	150x140
Capacity in Kg	-
Ø internal bottom	83
Ø internal top	104
Ø external bottom	89
Ø external top	109
External Height	137
Internal Height	135
Feet	non

TRADITIONNAL CHEESE MOULDS



PERFORATED MOULD CYLINDRICAL	
CODE	33700
Mould Dim	300x290
Capacity in Kg	-
Ø internal bottom	295
Ø internal top	300
Ø external bottom	304
Ø external top	307
External Height	298
Internal Height	290
Feet	oui



PERFORATED MOULD CYLINDRICAL LOW EDGE				
CODE	33724	33757	33727	33728
Mould Dim	155x155	180x160	200x160	220x160
Capacity in Kg	-	-	-	-
Ø internal bottom	150	177	192	213
Ø internal top	155	180	204	224
Ø external bottom	155	182	197	218
Ø external top	162	186	208	228
External Height	160	160	164	165
Internal Height	154	156	160	157
Feet	oui	oui	oui	oui



PERFORATED MOULD CONICAL LOW EDGE			
CODE	33758	33729	33730
Mould Dim	180x160	200x160	220x160
Capacity in Kg	-	-	-
Ø internal bottom	177	194	212
Ø internal top	182	198	220
Ø external bottom	182	198	216
Ø external top	187	205	226
External Height	160	161	161
Internal Height	156	160	159
Feet	non	non	non



PERFORATED MOULD CYLINDRICAL HIGH EDGE				
CODE	33761	33759	33732	33733
Mould Dim	155x190	180x190	200x190	220x190
Capacity in Kg	-	-	-	-
Ø internal bottom	150	177	192	215
Ø internal top	156	183	204	224
Ø external bottom	155	182	197	220
Ø external top	161	189	208	228
External Height	198	187	194	187
Internal Height	183	186	190	181
Feet	oui	oui	oui	oui

TRADITIONNAL CHEESE MOULDS



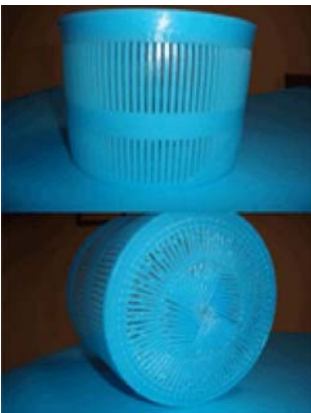
PERFORATED MOULD CONCAL HIGH EDGE

CODE	33760	33734	33735
Mould Dim	180x190	200x190	220x190
Capacity in Kg	-	-	-
Ø internal bottom	177	192	214
Ø internal top	185	200	226
Ø external bottom	182	197	219
Ø external top	191	205	230
External Height	187	191	182
Internal Height	186	189	179
Feet	non	non	non



PERFORATED MOULD CYLINDRICAL WITH UPPER PART

CODE	33768 T.N.	33706
Mould Dim	200x190	200x50
Capacity in Kg	-	-
Ø internal bottom	182	215
Ø internal top	207	196
Ø external bottom	194	222
Ø external top	218	210
External Height	161	58
Internal Height	158	50
Feet	oui	non



PERFORATED MOULD 200X140 mm. kg. 3.00 Mat. HD.PE

CODE	38418
Mould Dim	-
Capacity in Kg	Kg. 3.00
Ø internal bottom	184
Ø internal top	198
Ø external bottom	189
Ø external top	209
External Height	145
Internal Height	140
Feet	non



PERFORATED MOULD 155X140 mm. kg. 1.50 Mat. HD.PE.

CODE	38419
Mould Dim	-
Capacity in Kg	Kg. 1.50
Ø internal bottom	140
Ø internal top	155
Ø external bottom	144
Ø external top	178
External Height	144
Internal Height	140
Feet	non

TRADITIONNAL CHEESE MOULDS



PERFORATED MOULD CYLINDRICAL HIGH EDGE WITH DYLINDRICAL FACE				
Mat. HD. PE.				
CODE	33761/F	33759/F	33732/F	33733/F
Mould Dim	155x190	180x190	200x190	220x190
Capacity in Kg	-	-	-	-
Ø internal bottom	150	177	192	215
Ø internal top	156	183	204	224
Ø external bottom	155	182	197	220
Ø external top	161	189	208	228
External Height	198	187	194	187
Internal Height	183	186	190	181
Feet	oui	oui	oui	oui



PERFORATED MOULD GOAT WITH LID Mat.PP	
CODE	34752
Mould Dim	65X97
Capacity in Kg	-
Ø internal bottom	58
Ø internal top	65
Ø external bottom	59
Ø external top	70
External Height	97
Internal Height	90
Feet	oui



PERFORATED MOULD NAPOLI T.N. TYPE	
Mat. PP	
CODE	38417
Mould Dim	60X47
Capacity in Kg	100 gr.
Ø internal bottom	55
Ø internal top	60
Ø external bottom	56
Ø external top	66
External Height	48
Internal Height	47
Feet	non



PERFORATED MOULD FIORE SARDO		
CODE	33750	33751
Mould Dim	200X180X85	200X180X115
Capacity in Kg	-	-
Ø internal bottom	177	176
Ø internal top	200	203
Ø external bottom	183	182
Ø external top	210	210
External Height	92	120
Internal Height	85	115
Feet	oui	oui

TRADITIONNAL CHEESE MOULDS



PERFORATED MOULD SARDO

D.O.P

CODE	33767
Mould Dim	200X180X110
Capacity in Kg	-
Ø internal bottom	174
Ø internal top	220
Ø external bottom	180
Ø external top	230
External Height	115
Internal Height	111
Feet	oui



PERFORATED MOULD TYPE RIGATO BASKET

CODE	33901	33901 b
Mould Dim	180X235X75	180X246X100
Capacity in Kg	-	-
Ø internal bottom	180	180
Ø internal top	235	246
Ø external bottom	182	182
Ø external top	244	248
External Height	82	104
Internal Height	75	100
Feet	non	non



PERFORATED MOULD NAPOLI

CODE	33705	33706
Mould Dim	70X50	90X55
Capacity in Kg	-	-
Ø internal bottom	60	78
Ø internal top	71	90
Ø external bottom	64	83
Ø external top	78	96
External Height	58	57
Internal Height	53	51
Feet	oui	oui



PERFORATED MOULD GOAT

CODE	33752
Mould Dim	70X55X108
Capacity in Kg	-
Ø internal bottom	54
Ø internal top	68
Ø external bottom	55
Ø external top	70
External Height	113
Internal Height	106
Feet	oui

TRADITIONNAL CHEESE MOULDS



PERFORATED MOULD VIMINI BRIGANTE	
CODE	33731
Mould Dim	160X190
Capacity in Kg	-
Ø internal bottom	150
Ø internal top	160
Ø external bottom	155
Ø external top	170
External Height	192
Internal Height	187
Feet	oui



PERFORATED MOULD TYPE VIMINI BASKET				
CODE	33701	33702	33703	33704
Mould Dim	-	-	-	-
Capacity in Kg	0.30	0.50	0.60	1.00
Ø internal bottom	72	93	106	132
Ø internal top	85	104	117	141
Ø external bottom	78	98	112	136
Ø external top	93	112	126	152
External Height	80	88	73	87
Internal Height	75	84	70	84
Feet	oui	oui	oui	oui



PERFORATED MOULD BASSA TYPE CAMPANIA	
CODE	33746
Mould Dim	-
Capacity in Kg	1.00
Ø internal bottom	99
Ø internal top	130
Ø external bottom	104
Ø external top	134
External Height	110
Internal Height	103
Feet	oui



PERFORATED MOULD TYPE CAMPANIA					
CODE	33747	33748	33755	33756	33766
Mould Dim	-	-	-	-	-
Capacity in Kg	0.50	1.00	1.50	2.00	5.0
Ø internal bottom	80	104	115	137	215
Ø internal top	117	138	165	185	275
Ø external bottom	83	108	121	143	225
Ø external top	120	141	172	190	298
External Height	115	160	167	165	190
Internal Height	113	156	164	162	185
Feet	non	oui	oui	oui	non

TRADITIONNAL CHEESE MOULDS



RICOTTA AURORA

CODE	38401
Mould Dim	190X100
Capacity in Kg	-
Ø internal bottom	112
Ø internal top	188
Ø external bottom	117
Ø external top	218
External Height	108
Internal Height	103
Feet	oui



RICOTTA A VITE (with or without edge)

CODE	38406
Mould Dim	-
Capacity in Kg	2.00 NP
Ø internal bottom	126
Ø internal top	179
Ø external bottom	130
Ø external top	185
External Height	110
Internal Height	106
Feet	oui



CLOSED CONTAINER

CODE	33602	33604	33603
Mould Dim	-	-	-
Capacity in Kg	2.00	0.50	0.35 t.n.
Ø internal bottom	120	86	68
Ø internal top	206	120	102
Ø external bottom	123	88	70
Ø external top	228	130	110
External Height	115	70	75
Internal Height	113	68	74
Feet	non	non	non



RICOTTA

CODE	38404	38410	38405
Mould Dim	-	-	-
Capacity in Kg	0.35 NP b.p.	0.35 NP	0.50 NP
Ø internal bottom	67	67	81
Ø internal top	100	100	116
Ø external bottom	70	70	86
Ø external top	105	109	127
External Height	72	72	70
Internal Height	69	69	66
Feet	oui	oui	oui

TRADITIONNAL CHEESE MOULDS



RICOTTA 2,00 Kg

CODE	38407	38408
Mould Dim	205X105 b.l.	205x105 b.p
Capacity in Kg	2.00	2.00
Ø internal bottom	113	113
Ø internal top	204	204
Ø external bottom	119	119
Ø external top	218	217
External Height	110	110
Internal Height	106	106
Feet	oui	oui



RICOTTA LOST

CODE	38403
Mould Dim	185X120
Capacity in Kg	-
Ø internal bottom	97
Ø internal top	179
Ø external bottom	101
Ø external top	184
External Height	114
Internal Height	112
Feet	non



RICOTTA RECTANGULAR

CODE	34713
Mould Dim	-
Capacity in Kg	1.5 Kg
Ø internal bottom	130
Ø internal top	140
Ø external bottom	200
Ø external top	205
External Height	113
Internal Height	110
Feet	oui



RICOTTA CAMPANIA TYPE

CODE	38402
Mould Dim	105X170
Capacity in Kg	-
Ø internal bottom	58
Ø internal top	94
Ø external bottom	63
Ø external top	102
External Height	170
Internal Height	167
Feet	non

TRADITIONNAL CHEESE MOULDS



PERFORATED MOULD SCODELLATO 14X15 Mat. HD.PE

CODE	33769
Mould Dim	14X15
Capacity in Kg	-
Ø internal bottom	140
Ø internal top	150
Ø external bottom	145
Ø external top	160
External Height	166
Internal Height	155
Feet	oui



RICOTTA ROMAGNA Mat. PP

CODE	38411
Mould Dim	210X80
Capacity in Kg	-
Ø internal bottom	140
Ø internal top	210
Ø external bottom	145
Ø external top	230
External Height	95
Internal Height	80
Feet	oui



PERFORATED MOULD CYLINDRCAL LOW EDGE MAT. HD.PE

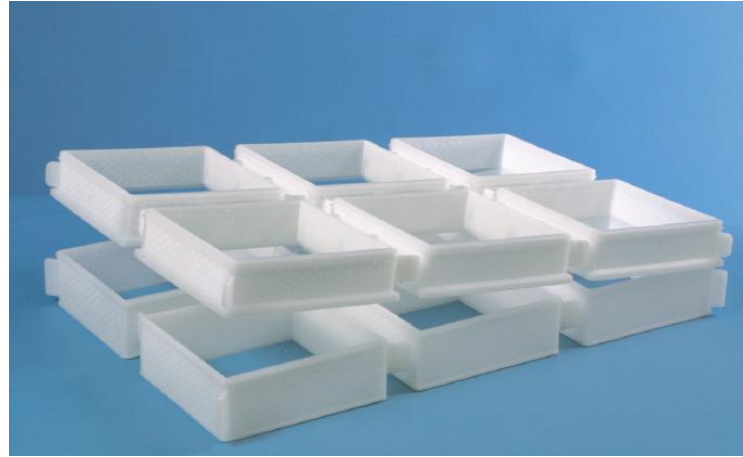
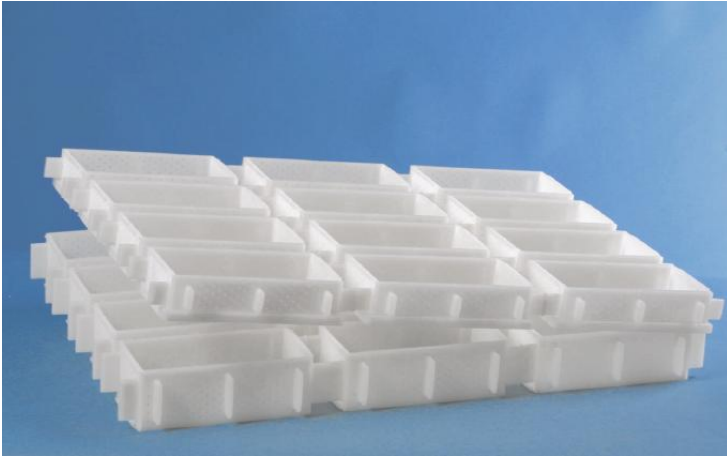
CODE	38413
Mould Dim	220X220
Capacity in Kg	-
Ø internal bottom	220
Ø internal top	220
Ø external bottom	230
Ø external top	230
External Height	228
Internal Height	220
Feet	oui



PERFORATED MOULD FETA BASE Mat. PP

CODE	33843	33843/A
Mould Dim	220X110X140	220X110X165
Capacity in Kg	-	-
Ø internal bottom	220X110	220X110
Ø internal top	220X110	220X110
Ø external bottom	230X135	230X135
Ø external top	250X135	250X135
External Height	155	180
Internal Height	140	165
Feet	non	non

FETA – BRIE – CAMEMBERT ... BLOCK MOULDS



Rectangular block-mould without bottom for 1Kg or 2Kg cheese

<i>Ext. Dimension (mm)</i>	<i>Base useful height (mm)</i>	<i>Upper part useful height (mm)</i>	<i>Configuration block-mould</i>	<i>Cheese Weight</i>
190 x 90	70	43	3 x 4	1Kg
190 x 90	70	43	2 x 6	1Kg
190 x 90	70	45	2 x 3	2Kg
190 x 90	70	50	2 x 3	2Kg



Brie or camembert mould type with bottom (diam 85mm base height 75mm)

FETA – BRIE – CAMEMBERT ... BLOCK MOULDS



Circular Block Mould with/without curd distributor with/without upper part

<i>Ext. Dimension (mm)</i>	<i>Base useful height (mm)</i>	<i>Upper part useful height (mm)</i>	<i>Configuration block- mould</i>
52	40	36	7 x 10
60	50	28	6 x 7
60	62	28	6 x 9
68	68		5 x 9
73	90		5 x 8
80	45	28	5 x 6
80	70	50-30	4 x 7 / 4 x 6
85	72	50	4 x 5
90	50		4 x 6
100	55		3 x 6
145	80	50	2 x 4
145	100	50	2 x 4
200	120	50	2 x 3
220	120	50	2 x 3
260	114	50	1 x 3

FETA – BRIE – CAMEMBERT ... BLOCK MOULDS

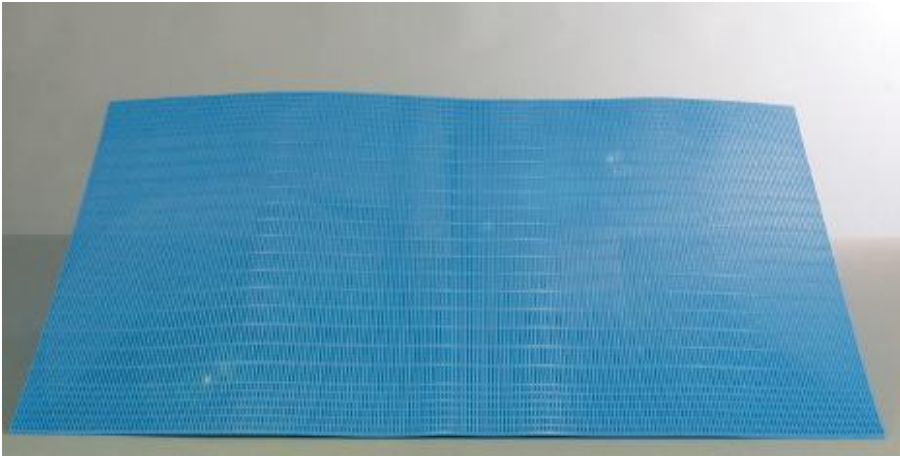


Blue or neutral color Feta mould with/without upper part

<i>Ext. Dimension (mm)</i>	<i>Base useful height (mm)</i>	<i>Upper part useful height (mm)</i>	<i>Configuration block- mould</i>
220 x 110	140	95	2 x 5 / 3 x 7
220 x 110	165	95	2 x 5 / 2 x 6

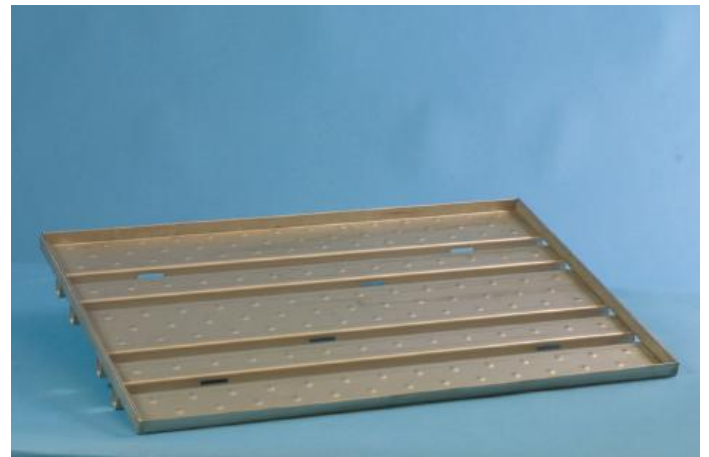
Other dimension possible according to quantity.

FETA – BRIE – CAMEMBERT ... BLOCK MOULDS



Draining Carpet

Tray to stack without bottom block-moulds



Ripening racks