

WASHING TUNNEL

Working principle

The WM body is made entirely out of stainless steel, material 1.4301.

There are two zones – for washing and rinsing.

The washing is done in the main washing zone with the help of a centrifugal pump and adjustable nozzles. The suitable cleaning agent is added into the main tank manually before the machine is switched on. As an option automatic dosing of the cleaning agent can be provided. The main tank, situated beneath the main washing zone, is equipped with a removable sieve (hole size- 1.5 mm) for catching the bigger dirt, an inlet for filling in fresh water (for the first fill-in), an overflow for the used water and an outlet with ball valve for draining the WM.

The desired temperature of the water for washing can be adjusted between 30- 65oC via a thermostat. The water used during the rinsing process is afterwards lead away into the main tank and thus the water inside is constantly refreshed. The containers are transported through the various washing zones by a motor driven stainless transport chain. The transport speed can be adjusted on the machine control panel depending on how dirty the respective containers are. A gear-motor is mounted on the outlet side of the machine to drive the transport chain. The gear motor is equipped with a sliding connector to prevent eventual injuries to the personnel from the transport chain. The control panel can be mounted either on the left or on the right of the machine in accordance with the customer requirements.

The centrifugal pump is equipped and ensured against working in the dry.

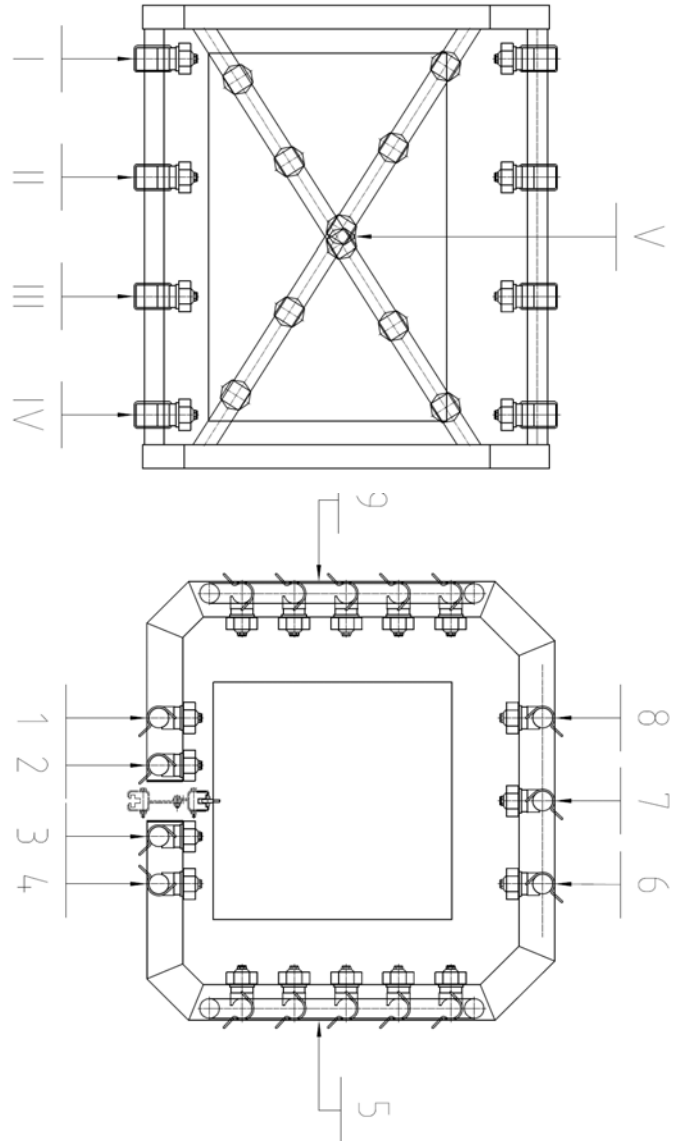
The machine is delivered together with a 450 mm long in-feed and outlet tables.

The machine complies with the Council Directives No. 98/37/EEC and 73/23/EEC and USDA regulations.



Technical Datas

Capacity: 160 - 240 boxes per hour.
Speed adjustment by a frequency converter.
Heating system: steam (direct injection in the tank)
Voltage supply: 400V / 3 phases / 50Hz
All electric conform to IP 65
Main tank water capacity: 250 l
Water circulation: 33 l/h
Cold water supply: R ¾" external threat
Water outlet: R 1 ¼" external threat
Pump motor power: 3.5 kW
Pump capacity: 33 m³/h
Pump pressure: 3 bar
Driving motor power: 0.18 kW
Weight: approx. 340 kg
Outside dimensions:
Length without tables: 2200 mm
Length with in-feed and output tables: 3110 mm
Width with control panel: 1020 mm
Width without panel: 800 mm
Height: 1600 mm



Option

Electrical heating 9(12) kW execution
Automatic chemical dosing system (with automatic filling system and concentrate measurement)