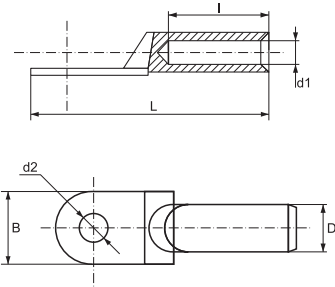




Standard: EN 61 238-1



Bimetallic non-isolated cable terminals for crimping DTL

3 YEAR WARRANTY

They are used for joining aluminum conductors - multicore conductors with different section to electrical devices or connections to combine all cores of the conductor, to provide safe connection at tightening in terminals and safe connection at the base of the terminal. Thus the connection stability against vibrations is increased and the possibility for short circuit is decreased. They are made of copper and aluminum alloys as in the aluminum billet is made under special technology the copper terminal formed like an ear. The connection is realized through crimping pliers, through mechanic pressing of the terminal and conductor. They are manufactured under modern technology and have high quality and long exploitation period.

Technical data:

- Material: copper aluminum
- Application: general for joining conductors to electrical devices.

Shoe type	d1 (mm)	D (mm)	d2 (mm)	L (mm)	l (mm)	B (mm)	Packing / Box (pcs)	Catalogue number
DTL - 1 - 16	6	11	8	70	30	16	20 / 200 / 1440	59224
DTL - 1 - 25	7	12	8	75	34	18	20 / 180 / 1080	59225
DTL - 1 - 35	8.5	14	10	85	38	20.5	20 / 100 / 600	59226
DTL - 1 - 50	9.8	16	10	90	40	23	20 / 70 / 420	59227
DTL - 1 - 70	11.5	18	12	102	48	26	10 / 60 / 360	59228
DTL - 1 - 95	13.5	21	12	112	50	28	10 / 40 / 180	59229
DTL - 1 - 120	15	23	14	120	53	30	10 / 30 / 120	59230
DTL - 1 - 150	16.5	25	14	126	56	34	5 / 25 / 120	59231
DTL - 1 - 185	18.5	27	16	133	58	37	5 / 20 / 120	59232
DTL - 1 - 240	21	30	16	140	60	40	4 / 12 / 72	59233

Copper cable wire fork terminal connector

3 YEAR WARRANTY



Type	Length (mm)	Colour	Conductor (mm2)	Packing (pcs.)	Packing / Box (pcs.)	Catalogue number
SVS1.25-4	21.2	Red	0.5-1.5	100	10 / 240	59080
SVS1.25-5	21.2	Red	0.5-1.5	100	15 / 180	59081
SVS1.25-6	21.2	Red	0.5-1.5	100	15 / 180	59082
SVS 2-4	21.0	Blue	1.5-2.5	100	15 / 180	59083
SVS 2-5	22.5	Blue	1.5-2.5	100	15 / 180	59084
SVS 2-6	27,6	Blue	1.5-2.5	100	10 / 120	59085
SVS 5,5-4	24.5	Yellow	4-6	100	5 / 60	59086
SVS 5,5-5	27,9	Yellow	4-6	100	5 / 60	59087
SVS 5,5-6	27,9	Yellow	4-6	100	5 / 60	59088



Standard: EN 61 238-1

Isolated cable joints

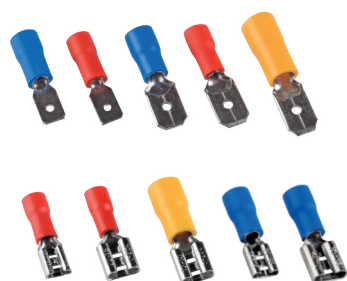
3 YEAR WARRANTY

Metal pipes with outside PVC insulation. They are used for joining/extending multicore conductors with section up to 6mm². It increases the connection stability against vibrations and decreases the possibility for short circuit. The connection is realized through crimping pliers, through mechanic pressing of the terminal and conductor. The different insulation colour corresponds to different conductor sections.

Technical data:

- Material: copper alloy
- Coating: polyvinylchloride
- Application: general for joining of copper conductors

Type	Length (mm)	Colour	Conductor (mm ²)	Packing (pcs.)	Packing / Box (pcs.)	Catalogue number
PVT 1.25	16	red	1	100	10 / 120	59015
BV 1.25	25	red	1	100	10 / 120	59001
PVT 2	16	blue	1.5-2.5	100	10 / 120	59034
BV 2	25	blue	1.5-2.5	100	10 / 60	59002
PVT 5.5	20	yellow	4-6	100	5 / 60	59014
BV 5.5	25	yellow	4-6	100	5 / 60	59003



Isolated cable terminals - MDD/FDD types

3 YEAR WARRANTY

They represent a cable terminal made of brass alloy with galvanic tin coating and insulated with polyvinylchloride. They are used as non-insulated terminals, as the insulated part protects the cores from bending and breaking in the joining point and at the same time it protects the staff from direct contact to the current - carrying parts. They are used for conductors with section up to 6 mm. The connection is realized through crimping pliers, through mechanic pressing of the terminal and cable. The different insulation colour corresponds to different conductor sections. They are manufactured under modern technology and have high quality and long exploitation period.

All insulated cable terminals are being offered in 100 pcs. packing

Technical data:

- Material: copper alloy
- Coating: polyvinylchloride
- Application: general for joining copper conductors
- Ambient temperature: -10 to +75°C

Type	Shape	Colour	Conductor (mm ²)	Shoe width	Packing (pcs.)	Packing / Box (pcs.)	Catalogue number
MDD 1.25 - 187	male	red	1	187	100	10 / 240	59012
MDD 1.25 - 250	male	red	1	250	100	10 / 240	59009
MDD 2 - 187	male	blue	1.5-2.5	187	100	10 / 240	59013
MDD 2 - 250	male	blue	1.5-2.5	250	100	10 / 180	59011
MDD 5.5 - 250	male	yellow	4-6	250	100	10 / 120	59010
FDD 1.25 - 187	female	red	1	187	100	20 / 240	59008
FDD 1.25 - 187	female	red	1	250	100	15 / 180	59006
FDD 2 - 187	female	blue	1.5-2.5	187	100	20 / 240	59007
FDD 2 - 250	female	blue	1.5-2.5	250	100	10 / 180	59004
FDD 5.5 - 250	female	yellow	4-6	250	100	10 / 120	59005



Isolated cable terminals - E type

3 YEAR WARRANTY

Type	Colour	Terminal length (mm)	Conductor (mm ²)	Packing (pcs.)	Packing / Box (pcs.)	Catalogue number
E0508	white	8	0.5	100	50 / 600	59023
E7508	blue	8	0.75	100	50 / 600	59024
E1008	red	8	1.0	100	50 / 600	59025
E1510	black	10	1.5	100	30 / 360	59026
E2512	grey	12	2.5	100	30 / 300	59027
E4012	orange	12	4.0	100	20 / 240	59028
E6018	green	18	6.0	100	5 / 120	59029
E10-18	dark green	18	10	100	8 / 96	59030
E16-18	milky yellow	18	16	100	6 / 60	59031
E25-16	black	16	25	100	5 / 36	59032
E35-25	grey-yellow	25	35	100	2 / 24	59033



Isolated cable terminals - PTV type

3 YEAR WARRANTY

Type	Shape	Colour	Conductor (mm ²)	Shoe width	Packing (pcs.)	Packing / Box (pcs.)	Catalogue number
PTV 1.25 - 10	male	red	0.25-1.5	1.9	100	20 / 240	59101
PTV 1.25 - 12	male	red	0.25-1.5	1.9	100	20 / 240	59102
PTV 2 - 10	male	blue	1.5-2.5	1.9	100	20 / 240	59103
PTV 2 - 12	male	blue	1.5-2.5	1.9	100	15 / 180	59104
PTV 5.5 - 13	male	yellow	4-6	2.9	100	8 / 96	59105

Isolated cable terminals - RVL type

3 YEAR WARRANTY

Type	Size of the opening (mm)	Colour	Conductor (mm ²)	Packing (pcs.)	Packing / Box (pcs.)	Catalogue number
RVL 1.25-4	4	red	1	100	20 / 240	59021
RVL 1.25-5	5	red	1	100	15 / 180	59022
RVL 2-4	4	blue	1.5-2.5	100	15 / 180	59018
RVL 2-5	5	blue	1.5-2.5	100	10 / 120	59019
RVL 5.5-4	4	yellow	4-6	100	8 / 96	59020
RV 5.5-5	5	yellow	4-6	100	8 / 96	59016
RV 5.5-6	6	yellow	4-6	100	8 / 96	59017





Isolated cable terminals - PBDD type

3 YEAR WARRANTY

Type	Shape	Colour	Conductor (mm ²)	Shoe width	Packing (pcs.)	Packing / Box (pcs.)	Catalogue number
PBDD 1.25 - 250	male	red	0.25-1.5	6.3	100	5 / 60	59106
PBDD 2 - 250	male	blue	1.5-2.5	6.3	100	5 / 60	59107
PBDD 5.5 - 250	male	yellow	4-6	6.3	100	5 / 60	59108



Isolated cable terminals - MPD type

3 YEAR WARRANTY

Type	Shape	Colour	Conductor (mm ²)	Shoe width	Packing (pcs.)	Packing / Box (pcs.)	Catalogue number
MPD 1.25 - 156	male	red	0.25-1.5	6.3	100	10 / 240	59109
MPD 2 - 195	male	blue	1.5-2.5	6.3	100	10 / 120	59110
MPD 5.5 - 195	male	yellow	4-6	6.3	100	10 / 120	59111



Isolated cable terminals - MDFN type

3 YEAR WARRANTY

Type	Shape	Colour	Conductor (mm ²)	Shoe width	Packing (pcs.)	Packing / Box (pcs.)	Catalogue number
MDFN 1.25 - 250	male	red	0.25-1.5	4	100	5 / 60	59112
MDFN 2 - 250	male	blue	1.5-2.5	4	100	5 / 60	59113
MDFN 5 - 250	male	yellow	4-6	5	100	4 / 48	59114



Isolated cable terminals - FDFNY type

3 YEAR WARRANTY

Type	Length (mm)	Conductor (mm ²)	Colour	Packing (pcs.)	Packing / Box (pcs.)	Catalogue number
FDFNY	250	1,25	red	100	10 / 60	59242
FDFNY	250	2	blue	100	10 / 60	59243
FDFNY	250	5,5	yellow	100	10 / 60	59244



Isolated cable terminals - CHS type

3 YEAR WARRANTY

Type	Length (mm)	Conductor (mm ²)	Packing / Box (pcs.)	Packing / Box (pcs.)	Catalogue number
CHS3	18.1	0.25-1.5	100	250	59115
CHS4	20.1	1.5-2.5	100	200	59116
CHS5	25.5	4-6	100	200	59117
CHS6	27.3	8	100	100	59118