



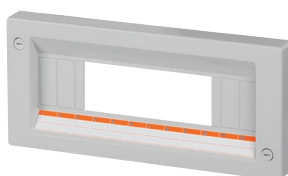
### Pair of uprights for rail DIN and panels EC

Type	Used for type boards	Packing / Box	Catalogue number
DP 5002	PBTD/PBBD 5002	1 pair	<b>53502DP</b>
DP 5003	PBTD/PBBD 5003	1 pair	<b>53503DP</b>
DP 5004	PBTD/PBBD 5004/5005	1 pair	<b>53504DP</b>
DP 5006	PBTD/PBBD 5006	1 pair	<b>53506DP</b>



### DIN rail with support EC

Type	Module capacity	Used for type boards	Packing / Box	Catalogue number
DS 5002	12	PBTD/PBBD 5002	1	<b>53502DS</b>
DS 5003	18	PBTD/PBBD 5003/5004	1	<b>53503DS</b>
DS 5004	24	PBTD/PBBD 5005	1	<b>53504DS</b>
DS 5005	28	PBTD/PBBD 5006	1	<b>53505DS</b>



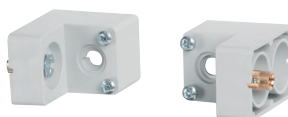
### Cover module with window EC

Type	Module capacity	Used for type boards	Packing / Box	Catalogue number
CMW 5002	12	PBTD/PBBD 5002	1	<b>53502CMW</b>
CMW 5003	18	PBTD/PBBD 5003/5004	1	<b>53503CMW</b>
CMW 5004	24	PBTD/PBBD 5005	1	<b>53504CMW</b>
CMW 5005	28	PBTD/PBBD 5006	1	<b>53505CMW</b>



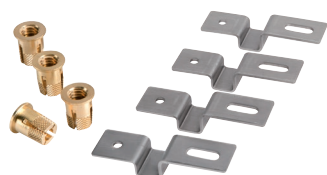
### Blank cover module EC

Type	Height of single/double cover (mm)	Used for type boards	Packing /Box	Catalogue number single cover	Catalogue number double cover
Blank cover module	125/250	PBTD/PBBD 5002	1	<b>53502S</b>	<b>53502D</b>
	150/300	PBTD/PBBD 5003/5004	1	<b>53503S</b>	<b>53503D</b>
	150/300	PBTD/PBBD 5005	1	<b>53505S</b>	<b>53505D</b>
	150/300	PBTD/PBBD 5006	1	<b>53506S</b>	<b>53506D</b>



### Deep adjustment back plate kit EC

Type	Used for type boards	Need kits	Packing /Box	Catalogue number
Deep adjustment back plate kit	PBTD/PBBD 5002/5003	2kit	1 kit (2 pcs)	<b>53507</b>
	PBTD/PBBD 5004/5005	3kit	1 kit (2 pcs)	<b>57508</b>
	PBTD/PBBD 5006	4kit	1 kit (2 pcs)	<b>53509</b>



### Spare brass and brackets for fixing- galvanized EC

Type	Used for type boards	Packing /Box	Catalogue number
Galvanized brackets	All type	1 kit (4 pcs)	<b>53510</b>
Spare brass insert kit	All type	1 kit (10 pcs)	<b>53512</b>



### Safety lock EC

Type	Used for type boards	Packing /Box	Catalogue number
Safety lock	All type	1	<b>53511</b>

**Note:** Lock supplied with two unified keys. The keys are unified and open all the locks