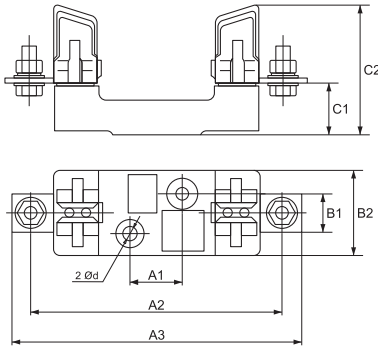


Documents corresponding to the product:
Standard EN 60269-1



Bases for high power safety devices

3 YEAR WARRANTY

The series bases for high power safety device is manufactured of permittivity alloy with mounted contact jaws of electrolytic copper supplied with special springs for contact compression and easy fuse links taking out. All current leading parts are connected to inlet outlet terminals with bolts; the terminals also end with bolts, to which the power supply conductors are connected. The bases are offered in five type sizes corresponding to the five types of fuse links.

Base type	Overall dimensions (mm)							
	A1	A2	A3	B1	B2	C1	C2	Ød
SIST00	25	100	120	-	30	25	60	7.5
SIST 0	25	150	170	-	30	37	72	7.5
SIST1	25	175	200	30	58	38	84	10.5
SIST2	25	200	225	30	60	38	100	10.5
SIST3	25	210	250	30	60	40	105	10.5

Base type	Fuse link type	Rated current (A)	Rated voltage Un (V)	Weight (gr)	Packing / Box (pcs)	Catalogue number
SIST00	NT 00	up to 160	600	193	5 / 120	12001
SISP00	NT 00	up to 160	600	215	5 / 120	12001P

Remark : Fuse bases SISP are made of porcelain

Base type	Fuse link type	Rated current (A)	Rated voltage Un (V)	Weight (gr)	Packing / Box (pcs)	Catalogue number
SIST0	NT 0	up to 160	600	295	3 / 54	12010
SISP0	NT 0	up to 160	600	319	3 / 54	12010P

Remark : Fuse bases SISP are made of porcelain

Base type	Fuse link type	Rated current (A)	Rated voltage Un (V)	Weight (gr)	Packing / Box (pcs)	Catalogue number
SIST1	NT 1	up to 250	600	550	3 / 36	12100
SISP1	NT 1	up to 250	600	550	3 / 36	12100P

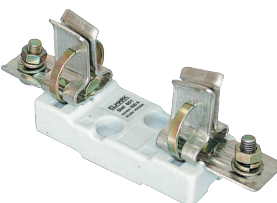
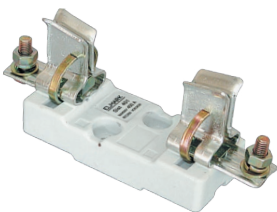
Remark : Fuse bases SISP are made of porcelain

Base type	Fuse link type	Rated current (A)	Rated voltage Un (V)	Weight (gr)	Packing / Box (pcs)	Catalogue number
SIST2	NT 2	up to 400	600	770	1 / 20	12200
SISP2	NT 2	up to 400	600	810	1 / 20	12200P

Remark : Fuse bases SISP are made of porcelain

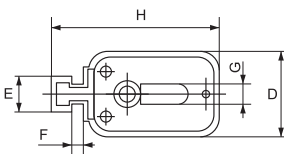
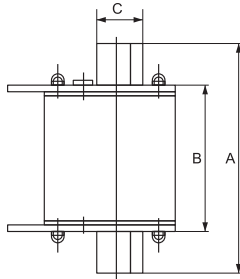
Base type	Fuse link type	Rated current (A)	Rated voltage Un (V)	Weight (gr)	Packing / Box (pcs)	Catalogue number
SIST3	NT 3	up to 630	600	965	1 / 15	12300
SISP3	NT 3	up to 630	600	987	1 / 20	12300P

Remark : Fuse bases SISP are made of porcelain



Documents corresponding to the product:

Standard EN 60269-1
EN 60269-2



Fuse links for high power safety device

3 YEAR WARRANTY

The series fuse links for high power safety devices is designed for short circuit protection. They are distinguished with high speed of operation and high reliability. The element is a ceramic (porcelain) body filled with fine quartz sand for voltaic arc lowering. In the ceramic body is mounted a fusible, specially profiled wafer connecting the current leading terminals. These terminals are manufactured of copper alloy with special nickel coating and have the form of knives to provide more contact surface. The fuse links correspond to "gL – gG" class which means that they are with common function and normal response time.

NH Fuses

Two operating classes of NH Fuses are available:

- Operating class gL/gG – general purpose, line protection, slow acting

Technical data:

- Rated voltage: 500V
- Rated short circuit current: 120 kAeff
- IP code: IP 00
- Ambient temperature: -5 to +65°C
- Altitude: up to 2000m

Base type	Overall dimensions (mm)				
	A	B	C	D	H
NT00	78	40	15	29	56.5
NT 0	125	68	15	29	56.5
NT1	135	68	21	48	62
NT 2	150	68	27	58	72
NT 3	150	68	33	67	84.5
NT00C	78	40	15	21	56,5
NT1C	135	68	21	29	62
NT2C	150	68	33	48	84,5

Type	In (A)	Un (V)	Packing / Box (pcs)	Catalogue number
NT00	16	500,600	3 / 120	10001
NT00	25	500,600	3 / 120	10002
NT00	32	500,600	3 / 120	10003
NT00	40	500,600	3 / 120	10004
NT00	50	500,600	3 / 120	10005
NT00	63	500,600	3 / 120	10006
NT00	80	500,600	3 / 120	10008
NT00	100	500,600	3 / 120	10009
NT00	125	500,600	3 / 120	10012
NT00	160	500,600	3 / 120	10016

Type	In (A)	Un (V)	Packing / Box (pcs)	Catalogue number
NT0	16	500,600	3 / 90	10015
NT0	25	500,600	3 / 90	10025
NT0	32	500,600	3 / 90	10032
NT0	40	500,600	3 / 90	10040
NT0	50	500,600	3 / 90	10050
NT0	63	500,600	3 / 90	10063
NT0	80	500,600	3 / 90	10080
NT0	100	500,600	3 / 90	10090
NT0	125	500,600	3 / 90	10092
NT0	160	500,600	3 / 90	10096



Type	In (A)	Un (V)	Packing / Box (pcs)	Catalogue number
NT1	80	500,600	3 / 54	10108
NT1	100	500,600	3 / 54	10110
NT1	125	500,600	3 / 54	10112
NT1	160	500,600	3 / 54	10116
NT1	200	500,600	3 / 54	10120
NT1	225	500,600	3 / 54	10122
NT1	250	500,600	3 / 54	10125

Type	In (A)	Un (V)	Packing / Box (pcs)	Catalogue number
NT2	160	500,600	1 / 30	10216
NT2	200	500,600	1 / 30	10220
NT2	250	500,600	1 / 30	10225
NT2	315	500,600	1 / 30	10231
NT2	400	500,600	1 / 30	10240

Type	In (A)	Un (V)	Packing / Box (pcs)	Catalogue number
NT3	500	500,600	1 / 24	10350
NT3	630	500,600	1 / 24	10363

Type	In (A)	Un (V)	Packing / Box (pcs)	Catalogue number
NT00C	16	500,600	3/120	10001C
NT00C	25	500,600	3/120	10002C
NT00C	32	500,600	3/120	10003C
NT00C	40	500,600	3/120	10004C
NT00C	50	500,600	3/120	10005C
NT00C	63	500,600	3/120	10006C
NT00C	80	500,600	3/120	10008C
NT00C	100	500,600	3/120	10009C

Type	In (A)	Un (V)	Packing / Box (pcs)	Catalogue number
NT1C	80	500,600	3/54	10108C
NT1C	100	500,600	3/54	10110C
NT1C	125	500,600	3/54	10112C
NT1C	160	500,600	3/54	10116C

Type	In (A)	Un (V)	Packing / Box (pcs)	Catalogue number
NT2C	160	500,600	1/30	10216C
NT2C	200	500,600	1/30	10220C
NT2C	250	500,600	1/30	10225C