

# Spare Parts Catalogue



O.ME.P.S.

O.ME.P.S.

O.ME.P.S.

O.ME.P.S.

	Pag.
<b>Hoses</b>	3
<b>Hose connection systems brand STORZ</b>	5
<b>Pipe union</b>	8
<b>Hose collors</b>	15
<b>Valves and components</b>	17
<b>Connections adaptors terminal bends</b>	22
<b>Pneumatic connections</b>	26
<b>Safety valves and thermometers</b>	28
<b>Hatch and components</b>	31
<b>Hose holder</b>	38
<b>Bumper and components</b>	41
<b>Tool box- side protections – mudguards and fittings</b>	44
<b>Ladder and fittings</b>	49
<b>Oleodynamic plant</b>	51
<b>Electrical air control and components</b>	54
<b>Cup fittings</b>	56

# Hose



**SPARE PARTS**

**OME PARTS** <sup>3</sup>



## RUBBER HOSE

### Rubber hose white inside



CODE n°	COLOUR int.	DIAMETER mm	WALL THICKNESS mm	PRESSURE bar	TEMPERATURE °c
TUB0263	WHITE	38 X 52	7	10	-30°+110°
TUB0020	WHITE	45 X 62	8,5	10	-40°+180°
TUB0256	WHITE	51 X 68	8,5	10	-40°+180°
TUB0022	WHITE	60 X 77	8,5	10	-40°+180°
TUB0023	WHITE	75 X 93	9	10	-40°+180°
TUB0018	WHITE	90 X 108	9	5	-40°+ 70

## HOSE

### Rubber hose white inside



CODE n°	COLOUR int.	DIAMETER mm	WALL THICKNESS mm	PRESSURE bar	TEMPERATURE °c
TUB0229	WHITE	102 X 110	8	8	-40°+70°
TUB0051	WHITE	102 X 118	10	8	-40°+70°

## RUBBER HOSE

### Rubber air hose black inside



CODE n°	COLOUR int.	DIAMETER mm	WALL THICKNESS mm	PRESSURE bar	TEMPERATURE °c
TUB0257	BLACK	38 X 52	7	10	-40°+120°
TUB0130	BLACK	40 X 54	7	10	-40°+120°
TUB0136	BLACK	50 X 67	8,5	10	-40°+180°
TUB0247	BLACK	75 X 93	8	8	-40°+ 70°
TUB0135	BLACK	102 X 112	5	10	-40°+ 70°
TUB0050	BLACK	102 X 118	8	10	-40°+ 70°
TUB0258	BLACK	102 X 122	10	10	-40°+ 70° For abrasive materials

## SPIRAL HOSE

### Rubber spiral hose white inside



CODE n°	COLOUR int.	DIAMETER mm	WALL THICKNESS mm	PRESSURE bar	TEMPERATURE °c
TUB0266	WHITE	51 X 64	6,5	10	-40°+180°

## HOSE OREGON

### PVC suction hose oregon



CODE n°	DIAMETER mm	SUCTION PRESSURE bar	TEMPERATURE °c
TUB0027	90	4	-10°+60°
TUB0078	100	4	-10°+60°

## FLEX HOSE

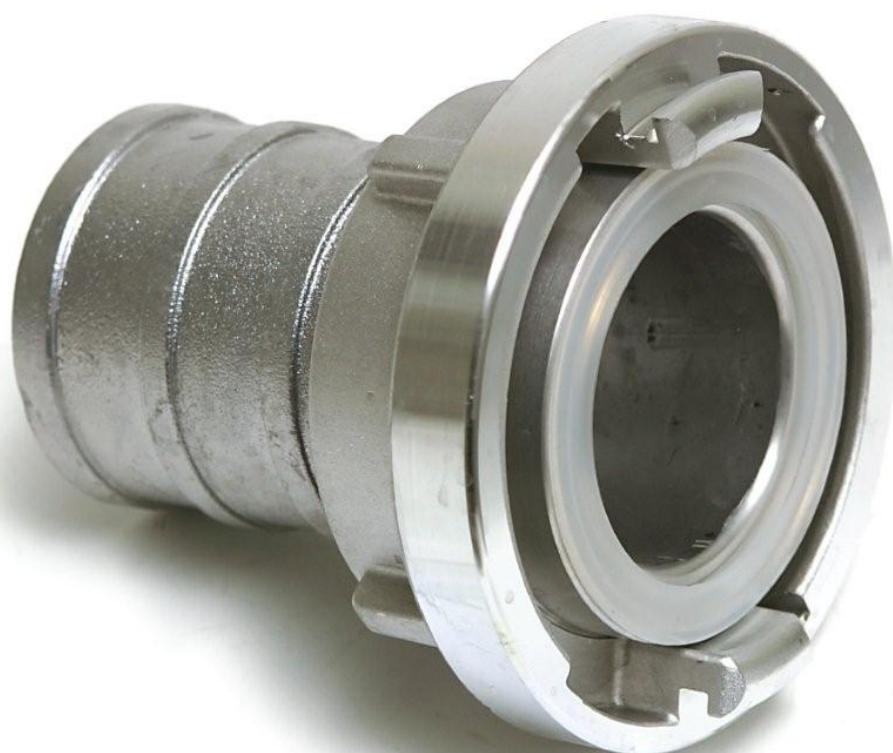
### Flexible inox hose connected gas



CODE n°	DIAMETER mm	LENGTH mm	THREAD	INCH
TUB0153	50	950	MM	2"
TUB0113	65	2500	MM	2 1/2"
TUB0124	65	2800	MM	2 1/2"

Hose-couplings and accessories, type

# Storz



**SPARE PARTS**

**© MEPS** 5



## STORZ HOSE FITTING

### Storz aluminium hose fitting



CODE n°	TYPE	DIAMETER mm	PRESSURE bar	LUG SPACE mm	GASKET
RAC0033	C 52	52	16	66	SILICONE
RAC0034	C 60	60	16	66	SILICONE
RAC0032	B 75	75	16	89	SILICONE
RAC0031	A 110	100	16	133	SILICONE

## STORZ HOSE FITTING

### Storz hose fitting for jaw



CODE n°	TYPE	DIAMETER mm	PRESSURE bar	LUG SPACE mm
RAC0659	C 52	50	16	66
RAC0660	B 75	75	16	89

## STORZ ADAPTER

### Aluminium Storz adapter with male thread



CODE n°	TYPE	THREAD	GASKET
RAC0029	C 52	2" MM	SILICONE
RAC0027	B 75	2"½ MM	SILICONE
RAC0009	B 75	3" MM	SILICONE

## STORZ ADAPTER

### Storz adapter with female thread



CODE n°	TYPE	THREAD	GASKET
RAC0028	C 52	2" FF	SILICONE
RAC0024	B 75	2"½ FF	SILICONE
RAC0025	B 75	3" FF	SILICONE
RAC0326	A 110	3"½ FF	SILICONE
RAC0135	A 110	4" FF	SILICONE

## STORZ ROTARY ADAPTER

### Storz rotary adapter with female thread



CODE n°	TYPE	THREAD	GASKET
RAC0348	C 52	2" FF	SILICONE
RAC0151	B 75	2"½ FF	SILICONE
RAC0345	A 110	3"½ FF	SILICONE
RAC0288	A 110	4" FF	SILICONE

## STORZ REDUCTION ADAPTER

### Storz reduction adapter



CODE n°	TYPE	THREAD	PRESSURE bar	GASKET
RAC0239	B 75 - C 52	2"½ - 2"	16	SILICONE
RAC0176	A 110 - B 75	3"½ - 2"½	16	SILICONE

## STORZ PLUG

### Aluminium storz plug with chain



CODE n°	TYPE	THREAD	PRESSURE bar	GASKET
RAC0038	C 52	2"	16	SILICONE
RAC0118	B 75	2"½	16	SILICONE
RAC0137	A 110	3"½	16	SILICONE



## TIGHTENING GASKET



*Antispark aluminium tightening gasket*

CODE n°	TYPE	for hose with diameter mm	application scope for hoses with outside diameter
RAC0619		45 X 59	from 58 to 61
RAC0644		50 X 66	from 64 to 67
RAC0218	KB63/65	63 X 79	from 78 to 82
RAC0663		75 X 91	from 89 to 93
RAC0217	KB80	80 X 96	from 94 to 97
RAC0514	SC	100 X120	from 118 to 122

## STORZ KEY



*Double iron storz key*

CODE n°	TYPE
SEM0003	A 110 - B 75 - C 522

## HOSE COLLORS



*Hose collors security for storz coupling*

CODE n°	TYPE
RAC0330	C 52
RAC0329	B 75
RAC0219	A 110

## SILICONE GASKET



*White silicone gasket*

CODE n°	TYPE
ACM0055	C 52
ACM0059	B 75
ACM0057	A 110

# PIPE UNION

Model: Italian English French



**SPARE PARTS**

**© MERS<sup>8</sup>**





## QUICK CONNECTION DIN 28 450

*Quick connection female thread Bsp stainless steel*



CODE n°	TYPE	THREAD
RAC0426	MK100	4" FF

RAC0426	MK100	4" FF
---------	-------	-------

## QUICK CONNECTION DIN 28 450

*Quick connection german male stainless steel*



CODE n°	TYPE	THREAD
RAC0553	VK100	4" MM

RAC0553	VK100	4" MM
---------	-------	-------

## FEMALE PLUG

*Female plug with aluminium hole*



CODE n°	TYPE	THREAD
RAC0552	MB100	4"

RAC0552	MB100	4"
---------	-------	----

## GUILLEMIN COUPLING

*Symmetrical coupling Guillemín with lock ring and thread according to BSP female*



CODE n°	TYPE	THREAD
RAC0564	DN80	3" FF
RAC0513	DN100	4" FF

RAC0564	DN80	3" FF
RAC0513	DN100	4" FF

## GUILLEMIN PLUG

*Guillemín plug with lock ring and chain*



CODE N°	TYPE	THREAD
RAC0566	DN100	4"
RAC0568	DN80	3"

RAC0566	DN100	4"
RAC0568	DN80	3"

## GUILLEMIN COUPLING

*GUILLEMIN Coupling*



CODE n°	TYPE mm	THREAD
RAC0567	DN 80 / DN 65	3" - 2"½

RAC0567	DN 80 / DN 65	3" - 2"½
---------	---------------	----------



## NUT AISI 304



*Nut aisi 304 steel*

CODE	TYPE
n°	

RAC0529 DN 100

## MALE WELDING AISI 304



*Male welding aisi 304 steel*

CODE	TYPE
n°	

RAC0531 DN 100

## FEMALE WELDING AISI 304



*Female welding aisi 304 steel*

CODE	TYPE
n°	

RAC0530 DN 100

## BLIND NUT AISI 304



*Blind nut with chain*

CODE	TYPE
n°	

ACM0804 DN100

## NUT PLUG



*Nut plug aisi 304*

CODE	TYPE
n°	

ACM0660 DN 50

## GASKET EPDM



*Gasket epdm*

CODE	TYPE
n°	

ACM0802 DN50

ACM0654 DN65

ACM0661 DN80

ACM0662 Dn100



## RING NUT

CODE  
n°

ACM1558



## GLASS ADAPTER

CODICE  
n°

ACM1559



## SEALING DISC FOR NUT PLUG

CODE  
n°

ACM1556



## GASKET

*Gasket for nut plug*

CODE  
n°

ACM1557



## UNICONE CRANK

*Knob for unicone coupling*

CODE	TYPE
n°	

RAC0540 DN100



## UNICONE COUPLING

*Unicone coupling in iron female adapter*

CODE	TYPE	THREAD
n°		

RAC0635 DN100 4"



## UNICONE COUPLING

*Unicone coupling in iron and inox*

CODE	TYPE	THREAD	NOTE
n°			

RAC0597 DN100 4"½ INOX

RAC0643 DN100 4"½ IRON



## COVER

*Cover for unicone coupling*

CODE	TYPE	THREAD	NOTE
n°			

RAC0541 DN100 4" STEEL

RAC0636 DN100 4" IRON

FOTO NOT AVAILABLE

## Unicone coupling with male thread

*Unicone coupling with male thread*

CODE	TYPE	THREAD	NOTE
n°			

RAC0542 DN100 4" STEEL

RAC0634 DN100 4" IRON

FOTO NOT AVAILABLE

## UNICONE COUPLING FOR HOSE

*Unicone coupling for hose fitting*

CODE	TYPE	THREAD	NOTE
n°			

RAC0637 DN100 4" IRON

RAC0638 DN100 4" STEEL



## GASKET FOR UNICONE COUPLING

*Gasket for unicone coupling*

CODE	THREAD
n°	

RAC0687 4"



## FLANGED HOSE

CODE NOTE  
n°

TUB0031 STAINLESS STEEL FLANGED HOSE  
TUB0102 STAINLESS STEEL REVOLVING FLANGED HOSE

## FLANGED HOSE



CODE NOTE  
n°

TUB0101 FLANGED ZINC-COATED HOSE  
TUB0145 REVOLVING FLANGED ZINC-COATED HOSE

## SLOTTED PIVOT

*Slotted Pivot with top PERLINI*



CODE  
n°

ACM0001

## SLOTTED PIVOT

*Slotted Pivot with top PIACENZA*



CODE  
n°

ACM0004

## THREADED SLOTTED PIVOT

*Threaded slotted pivot PERLINI*



CODE  
n°

BUL0148

## SLOTTED PIVOT

*Slotted Pivot for cup collar for plug*



CODE  
n°

ACM0853

## WEDGE LOCK

*Wedge lock PIACENZA*



CODE  
n°

ACM0003

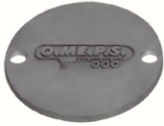
## WEDGE LOCK

*Wedge lock PERLINI*



CODE  
n°

ACM0033



## OMEPS PLUG

CODE n°	DIAMETER mm°	NOTE
------------	-----------------	------

ACM0233 190 ALUMINIUM

## RUBBER GASKET

*Rubber gasket for drain pipe coupling*



CODE n°	COLOUR	WALL THICKNESS mm
------------	--------	----------------------

ACM0061 WHITE 8  
ACM0060 WHITE 12  
ACM0056 BLACK 8  
ACM0189 BLACK 12

# HOSE COLLARS



**SPARE PARTS**



## MIKALOR HOSE COLLORS

*MIKALOR hose collors in stainless steel*



CODE n°	DIAMETER mm	WIDTH mm
ACM0368	48 X 51	20
ACM0087	59 X 63	20
ACM0535	63 X 68	25
ACM0088	73 X 79	25
ACM0496	79 X 85	25
ACM0806	85 X 91	25
ACM0089	91 X 97	25
ACM0084	104 X 112	25
ACM0085	112 X 121	25

## HOSE COLLORS WITH SCREW



CODE n°	DIAMETER mm	WIDTH mm
ACM0225	90 X 110	10
ACM0224	120 X 140	10

## DOUBLE BOLTED HOSE COLLORS



CODE n°	DIAMETER mm	WIDTH mm
ACM1493	116 X 25	10



# VALVES AND COMPONENTS



**SPARE PARTS**



## BALL VALVES

*Ball valves in aluminium*

CODE n°	INCH	THREAD
------------	------	--------

RAC0484	1"½"	FF
RAC0483	2"	FF

## BALL VALVES

*Brass ball valves female thread*



CODE n°	INCH	THREAD
------------	------	--------

RAC0047	½"	FF
RAC0045	1"	FF
RAC0664	1"½"	FF
RAC0666	2"	FF
RAC0049	2"½"	FF
RAC0172	3"	FF

## BALL VALVES

*Ball valves in aluminium male female thread*



CODE n°	INCH	THREAD
------------	------	--------

RAC0665	1"½"	MF
---------	------	----

## AKO VALVE

*AKO drain valve in PVC*



CODE n°	TYPE	INCH
------------	------	------

RAC0131	DN 40	1"½"
---------	-------	------

## AKO VALVE

*AKO drain valve in aluminium*



CODE n°	TYPE
------------	------

ACM0234	DN 100
---------	--------

## BLACK RUBBER SLEEVE

*Rubber sleeve for AKO valve*



CODE n°	TYPE
------------	------

RAC0133	DN 100
---------	--------

## RUBBER GASKET

*Rubber gasket for AKO valve DN 100*



CODE n°	DIAMETER	NOTE
------------	----------	------

ACM0235	190 X 100 X 6 FORI 8	BLACK
ACM0655	190 X 100 X 6 FORI 8	WHITE



## SLEEVE HOLD

*Iron sleeve hold*

CODE  
n°

ACM0102



## RUBBER GASKET

*Rubber gasket for iron sleeve hold*

CODE DIAMETER  
n°

ACM0162 170 X 101 X 6 FORI 4

## RUBBER SLEEVES

*Rubber sleeves for iron sleeves hold*



CODE NOTE  
n°

ACM0010 SHORT

ACM0011 LONG

## VALVES ROMA

*Not return valves Roma*



CODE THREAD  
n°

RAC0053 2"

## Y VALVES

*Not return Y valves*



CODE THREAD  
n°

RAC0539 1"½

RAC0560 2"

RAC0486 2"½

## VALVES EUROPA

*Not return valves EUROPA*



CODE THREAD NOTE  
n°

RAC0052 3/8" FILTER

RAC0102 1"½

RAC0501 2"

RAC0050 2"½

RAC0051 3"

## FILTER

*Filter for not return valve*



CODE THREAD  
n°

RAC0064 1"½

ACM0884 2

## RESERVE VALVE

*Reserve valve*



CODE TYPE  
n°

ACO0070 DN 65

ACO0316 DN 80



## BUTTERFLY VALVES



### Butterfly valves type EBRO

CODE n°	TYPE	NOTE
---------	------	------

ACM0959	DN 80	BLACK GASKET
ACM0864	DN100	BLACK GASKET
ACM0715	DN125	WHITE GASKET
ACM0716	DN150	WHITE GASKET

## BUTTERFLY VALVES



### Butterfly valves type EBRO - GHIBSON

CODE n°	TYPE	NOTE
---------	------	------

ACM0717	DN100	WHITE GASKET
RAC0042	DN125	WHITE GASKET
RAC0182	DN150	WHITE GASKET
RAC0346	DN200	WHITE GASKET

## BUTTERFLY VALVES



### Butterfly valves in stainless steel

CODE n°	TYPE	NOTE
---------	------	------

RAC0528	DN125	
RAC0606	DN150	

## GASKET



### Gasket for butterfly valve GHIBSON

CODE n°	TYPE	NOTE
---------	------	------

ACM0686	DN100	WHITE
ACM0236	DN125	WHITE
ACM0237	DN150	WHITE

## GASKET



### Gasket for butterfly valve EBRO

CODE n°	TYPE	NOTE
---------	------	------

ACM0870	DN 25	WHITE
---------	-------	-------

## GASKET



### Gasket for butterfly valve ORTON

CODE n°	TYPE	NOTE
---------	------	------

ACM0066	DN125	WHITE
ACM0350	DN150	WHITE



## SAUNDERS VALVE



*SAUNDERS valve*

CODE	THREAD
n°	

RAC0633 2"

## AIR MANIFOLD



*Air turbulence manifold*

CODE	THREAD
n°	

ACM0913 4"

## COUPLING



*Coupling for butterfly valves*

CODE	THREAD
n°	

ACM0855 12

ACM1421 24

## AIR REGULATOR VALVE



*Air regulator valve*

CODE	THREAD
n°	

RAC0381 1"

RAC0247 1"½

# CONNECTIONS ADAPTORS TERMINALS AND BENDS



**SPARE PARTS**



## BEND

*Bend in stainless steel*

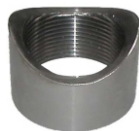


CODE	THREAD
n°	

ACM0276	1"½ MF
ACM0323	2" MF

## SLEEVE

*Sleeve in stainless steel with hollow*



CODE	THREAD
n°	

RAC0054	1"½
---------	-----

## SLEEVE

*Sleeve in stainless steel*



CODE	THREAD
n°	

RAC0056	1/4"
RAC0434	3/8"
RAC0435	½"
RAC0402	2"
RAC0055	2"½

## NIPPLE

*Nipple in stainless steel (with the hose hollow)*



CODE	THREAD
n°	

RAC0067	1"½ MM
RAC0068	2" MM

## NIPPLE

*Nipple in stainless steel*



CODE	THREAD
n°	

RAC0178	2" MM	L=190
RAC0069	2"½ MM	
RAC0065	3" MM	
RAC0072	4" MM	

## BEND

*Bend in stainless steel*



CODE	DIAMETER	NOTE
n°		

ACO0017	76 X 2	POLISHED
ACO0018	85 X 2	POLISHED
ACO0064	88,9 X 3	SATIN
ACO0016	90 X 2	POLISHED
ACM0039	101 X 3	SATIN
ACM0346	114 X 3	SATIN

## REDUCTION

*Reduction in stainless steel*



CODE	DIAMETER
n°	

ACM0152	60 X 45
ACM0659	101,3 X 60,3
ACM0658	101,3 X 76,3
ACM0114	139 X 88
ACM0113	168 X 101



## NIPPLE

*Iron nipple for unloading pipe*

CODE	THREAD	NOTE
n°		

SEM0701 4" FOR UNLOADING PIPE

## NIPPLE

*Iron nipple for unloading pipe*

CODE	THREAD
n°	

RAC0578 1"  
SEM0170 1½"  
SEM0171 2"  
ACM0919 2½"  
SEM0214 3"

## BEND

*Iron bend*

CODE	DIAMETER
n°	

ACM0306 101,6 X 3

## BEND

*Aluminium bend*

CODE	DIAMETER	NOTE
n°		

ACM0035 60 X 3 SATIN  
ACM0963 60 X 5 POLISHED NORM 3  
ACM0036 76 X 3 SATIN  
ACM0038 89 X 3 POLISHED  
ACM0997 89 X 5 POLISHED  
ACM0998 100 X 5 SATIN

## NIPPLE

*Nipple in Aluminium with hose fitting*

CODE	THREAD	DIAMETER	NOTE
n°			

SEM0167 1½" T45  
SEM0168 2" T60  
SEM0196 2½" T76 L 240  
SEM0169 3" T90

## NIPPLE

*Nipple in aluminium with hollow*

CODE	THREAD
n°	

RAC0060 1½"  
SEM0166 2"

## SLEEVE

*Aluminium sleeve*

CODE	THREAD
n°	

SEM0055 1/4"  
SEM0057 3/8"  
SEM0053 1"  
SEM0054 1½"  
SEM0056 2"  
SEM0371 2½"





## NIPPLE

*Aluminium threaded nipple*



CODE n°	THREAD	LENGTH mm
------------	--------	--------------

SEM0159	1"	
SEM1001	1"½	L=240
SEM1002	1"½	
SEM0162	2"	L=240
SEM0163	2"1/2"	
SEM0164	3"	
SEM0468	4"	

## BEND JOINT

*Brass bend joint hose fitting*



CODE n°	THREAD	NOTE
------------	--------	------

ACM0002	1"½	T 45
RAC0096	2"	T 60

## STRAIGHT JOINT

*Straight brass joint hose fitting*



CODE n°	THREAD	NOTE
------------	--------	------

RAC0062	1"½	T45
RAC0095	2"	T 60

## NIPLES



CODE n°	THREAD	NOTE
------------	--------	------

ACM0150	2"	STAINLESS STEEL
SEM0215	2"	ALUMINIUM

# PNEUMATIC CONNECTIONS



**SPARE PARTS**



## STRAIGHT FITTING



### Hose straight fitting

CODE	THREAD	NOTE
n°		

RAC0115	1/4"	T 6
RAC0156	1/4"	T 8
RAC0008	1/8"	T 6
RAC0012	1/8"	T 8
RAC0116	M 12 X 1,25	T 6

## ADJUSTABLE FITTING



### Adjustable fitting

CODE	THREAD	NOTE
n°		

RAC0020	1/4"	T 6
RAC0016	1/4"	T 8
RAC0005	1/8"	T 8
RAC0006	1/8"	T 6
RAC0017	M 12 X 1,25	T 6
RAC0563	M 12 X 1,5	T 6

## JOINT



### Three-way joint

CODE	NOTE
n°	

RAC0003	T 8
RAC0154	T

## NIPLES

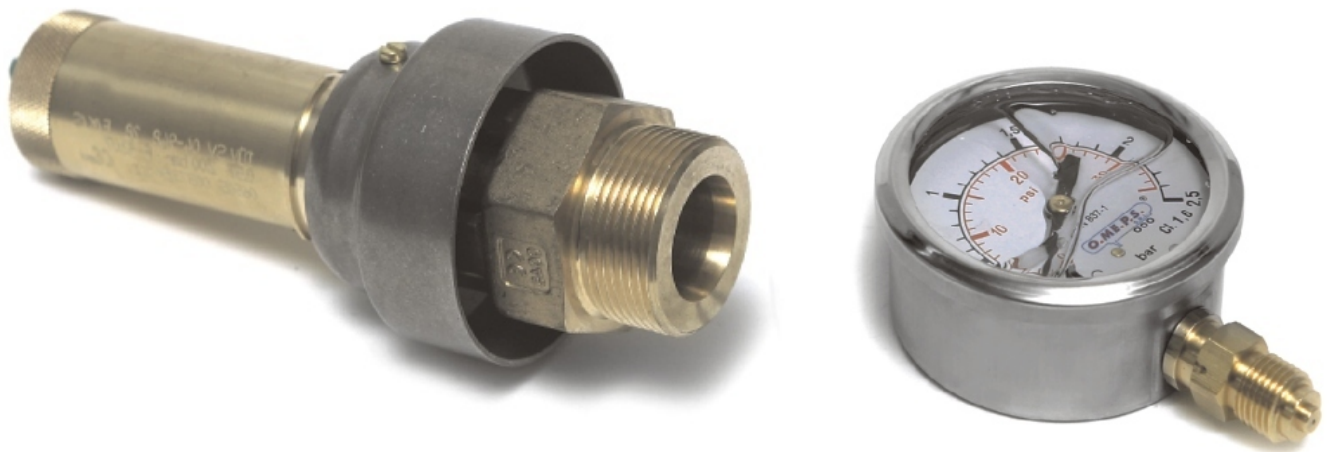


### Male nipples

CODE	THREAD
n°	

RAC0094	1/4" MM
RAC0099	3/8" MM

# **SAFETY-VALVES PRESSURE GAUGES AND TERMOMETERS**



## **SPARE PARTS**



## SAFETY VALVE

*Safety valve with protecting cap*



CODE n°	REACTION PRESSURE bar	THREAD	TEMPERATURE °c
RAC0077	2	1"½	-20°+200°
ACM0334	1,3	1"½	-20°+200°
ACM0891	2	1"½	-30°+200°
ACO0055	0,98	1"½	-20°+200°

## SAFETY VALVE

*Safety valve without protecting cap*



CODE n°	REACTION PRESSURE bar	THREAD	TEMPERATURE °c
ACM0347	0,98	1"½	-20°+200°
ACM0882	1,3	1"½	-20°+200°
ACO0057	2	1"½	-20°+200°

## SAFETY VALVE

*Safety valve type HEROSE without protecting cap*



CODE n°	REACTION PRESSURE bar	THREAD	TEMPERATURE °c
ACM1407	2	1"½	-25°+200

## SAFETY VALVE

*Safety valve type HEROSE with protecting cap*



CODE n°	REACTION PRESSURE bar	THREAD	TEMPERATURE °c
ACM1408	2	1"½	-40°+200
ACM1458	1,3"	1"½	-40°+200
ACM1544	0,98	1"½	-40°+200



## PRESSURE GAUGE

### *Glycerine-filled pressure gauge*



CODE n°	PRESSURE bar	NOTE
ACM0077	2	REAR COUPLING
ACM0180	2,5	REAR COUPLING

ACM0077	2	REAR COUPLING
ACM0180	2,5	REAR COUPLING

## PRESSURE GAUGE

### *Glycerine-filled pressure gauge short shank*



CODE n°	PRESSURE bar	DIAMETER	NOTE
ACM0179	10	100	RADIAL COUPLING
ACM0238	2,5	100	RADIAL COUPLING
ACM0766	2,5	100	RADIAL COUPLING

ACM0179	10	100	RADIAL COUPLING
ACM0238	2,5	100	RADIAL COUPLING
ACM0766	2,5	100	RADIAL COUPLING

## PRESSURE GAUGE

### *Pressure gauge*



CODE n°	PRESSURE bar	DIAMETER	NOTE
ACM0165	2,5	80	RADIAL COUPLING
ACM0924	6	40	RADIAL COUPLING

ACM0165	2,5	80	RADIAL COUPLING
ACM0924	6	40	RADIAL COUPLING

## GASKET

### *Rubber gasket with insert (for pressure gauge)*



CODE n°	DIAMETER mm
ACM0697	88 X 63 X 2

ACM0697	88 X 63 X 2
---------	-------------

## TERMOMETER

### *Termometer long shank*



CODE n°	display range from/to °c	DIAMETER	NOTE
ACM0675	0-160°	60	INOX

ACM0675	0-160°	60	INOX
---------	--------	----	------

# HATCH AND COMPONENTS



## SPARE PARTS



## LID

*Lid set*

CODE NOTE  
n°

SEM1006 ON 450



## LID

CODE  
n°

SEM1131



## MANHOLE

*Manhole Lid*

CODE NOTE  
n°

SEM1132 DN 450



## MANHOLE GASKET

*Manhole gasket*

CODE NOTE  
n°

ACM0985 DN 450



## WING NUT

CODE  
N°

SEM1133



## PIN

CODE  
n°

SEM1134



## GRANULE

CODE  
n°

SEM1135





## SPRING



CODE  
N°

SEM1136

## WASHER



CODE  
N°

SEM1137

## BOLT



CODE  
n°

SEM1138

## WING NUT PROTECTION



CODE  
N°

SEM1139

## VIBRATION DAMPER



*Vibration damper*

CODE  
n°

ACM0768



## WING NUT



CODE	DIMENSIONS
n°	mm

ACM0708 20 X 1200

## PIVOT



*Pivot for wing nut*

CODE	DIMENSIONS	NOTE
n°		

BUL0296  $\varnothing$ 18 x 65 M 20

## SEEGER RINGS



CODE	DIAMETER	SHAFT
n°		

BUL0300 17 18

## RUBBER GASKET

*Foodstuff white rubber gasket*



CODE	NOTE
n°	

ACM0815 SH 60

## WING NUT SPITZER



*Wing nut SPITZER*

CODE	DIMENSION
n°	

ACM0856 M 16 X 90

## PIVOT

*Pivot for Wing nut SPITZER*



CODE	DIMENSION
n°	

ACM0857 16 X 60



## WING NUT PIACENZA

*Wing nut PIACENZA*



CODE  
n°

ACM0725

## TIE ROD PIACENZA

*Tie rod PIACENZA*



CODE  
n°

ACM0618

## SEAL PIACENZA

*Seal PIACENZA*



CODE	DIAMETER	NOTE
n°		

ACM0252	430 X 480 X 16	WHITE
ACM0253	450 X 400 X 18	WHITE

## PIVOT

*Pivot for handle*



CODE	NOTE
n°	

ACM0137 STAINLESS STEEL

## HANDLE

*Handle for tipping cup*



CODE	NOTE
n°	

ACM0140 STAINLESS STEEL

## WASHER

*Washer*



CODE	DIAMETER	NOTE
n°	mm	

BUL0350 50 X 21 X 4 STAINLESS STEEL



## WING NUT

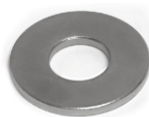


Zinc-coated wing nut OMEPS

CODE  
n°

ACM0141

## WASHER



Zinc-coated washer for wing nut OMEPS

CODE DIAMETER NOTE  
n°

BUL0145 50 X 21 X 4 ZINC-COATED

## BOLT



Bolt for OMEPS cover

CODE  
n°

ACM0206

## HOLLOW RING TIE ROD



Hollow ring tie rod for wing nut

CODE NOTE  
n°

ACM0138 SHORT

ACM0139 LONG

## GASKET



Gasket

CODE NOTE  
n°

ACM0185 WHITE

ACM0186 BLACK

## RUBBER TIP



Rubber tip for wing nut

CODE  
n°

ACM0435

## GASKET



Gasket OMEPS

CODE DIMENSIONS NOTE  
n°

ACM0222 430 X 400 X 14 BLACK

ACM0223 430 X 400 X 14 WHITE

## WING NUT TYPE



Wing nut OMEPS

CODE  
n°

ACM0411



## BRONZE BUSHING SCREW



CODE  
n°

RAC0220

## PIVOT



*Pivot for wing nut OMEPS*

CODE  
n°

RAC02600

## HOLDER



*Holder for wing nut OMEPS*

CODE  
n°

RAC0260

## DUST COVER



*Dust cover for wing nut OMEPS*

CODE  
n°

ACM0412

## WING NUT



*Wing nut MISTRAL*

CODE  
n°

ACM0760

## TIE ROD



*Tie rod for wing nut MISTRAL*

CODE  
n°

ACM07611

## GASKET



*Gasket for cover MISTRAL*

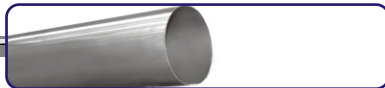
CODE  
n°

ACM0186

# HOSE HOLDER



**SPARE PARTS**



## HOSE HOLDER

*Stainless steel hose holder*



CODE n°	DIAMETER mm	LENGTH mm
------------	----------------	--------------

ACM0727	150	6000
ACM0648	160	2500
ACM0975	160	5000
ACM0911	200	5000
ACM0110	200	6000

## HOSE HOLDER

*PVC hose holder*



CODE n°	DIAMETER mm	LENGTH mm
------------	----------------	--------------

ACM0636	200	6000
ACM0638	150	3000
ACM1426	200	5000

## COLLAR

*Stainless steel collar for hose holder*



CODE n°	NOTE
------------	------

SEM0011	FOR DOUBLE HOSE HOLDER DN 200
---------	-------------------------------

## COVER

*Square cover with key*



CODE n°	DIAMETER
------------	----------

ACM0029	160
ACM0031	200

## COVER

*Double cover with key*



CODE n°	DIAMETER	NOTE
------------	----------	------

ACM0729	160	PVC
ACM0030	200	PVC

## KEY

*Key for hose holders*



CODE n°
------------

ACM0297
---------



## PLUG

*Hose holders plug*

CODE	DIAMETER	NOTE
n°		

ACM0123	160	PVC
ACM0122	200	PVC

## DOUBLE PLUG

*Double plug for hose holders*

CODE	DIAMETER	NOTE
n°		

ACM0728	160	PVC
ACM0118	200	PVC

## BOX LATCH

*Plastic box latch*

CODE
n°

ACM0158

## HINGE

*Stainless steel hinge*

CODE	DIMENSIONS	NOTE
n°		

ACM0017 74 X 39 STAINLESS STEEL

## HATCH SUSPENSION

*Tool box hatch suspension*

CODE	NOTE
n°	

ACM0006	SHORT
ACM0830	LONG

## COLD PROTECTION

*Rubber cold protection*

CODE	DIMENSIONS
n°	

ACM0094 9 X 5,5 X 68

## SPOTLIGHT

*Spot light*

CODE
n°

IEL0016



# Bumper and components



**SPARE PARTS**



## BAR EUROPOINT 2



*Aluminium bar set*

CODE  
n°

IEL0443

## RAW BAR



*Raw barre in aluminium*

CODE  
n°

ACM0689

## SIDELIGHTS



CODE  
n°

ACM0196

## BUMPER SET



*Aluminium set for bumper*

CODE  
n°

ACM0859

## BUMPER LATCH



*Plastic bumper latch*

CODICE  
n°

ACM0859

## ANTYSPRAY



CODE      DIMENSIONS  
n°

ACM0819    2400 X 360

## LICENSE PLATE HOLDER



CODE      NOTE  
n°

ACM0106    INOX A BANDIERA



## EUROPOINT 2 WITH STALK LAMP

*Europoint 2 with stalk lamp ASPOK*



CODE	NOTE
n°	

IEL0472	LEFT
IEL0471	RIGHT

## EUROPOINT 2 C

*EUROPOINT 2 C triangle*



CODE	NOTE
n°	

IEL0236	RIGHT
IEL0238	LEFT

## GEMMA EUROPOINT 2 C

*Gemma EUROPOINT 2 C*



CODE	NOTE
n°	

IEL0403	RIGHT LEFT
---------	------------

## LIGHT



CODE	NOTE
n°	

IEL0087	RIGHT Lc 8
IEL0088	LEFT Lc 8

## LIGHT LENS



CODE	NOTE
n°	

IEL0141	LEFT Lc 8
IEL0152	RIGHT Lc 8

## NUMBER PLATE LIGHT



CODE	NOTE
n°	

IEL0233	
---------	--

## STALK LAMP



CODE	NOTE
n°	

IEL0234	RIGHT
IEL0235	LEFT

# **Tool box- side protections – mudguards and fittings**



**SPARE PARTS**



## TOOL BOX



CODE n°	DIMENSIONS mm	NOTE
---------	---------------	------

ACM0780	920 X 460 X 920	
ACM0781	920 X 460 X 920	ACCESSORIES FOR PLASTICS TOOL BOX
ACM0782	920 X 460 X 920	ACCESSORIES FOR PLASTICS TOOL BOX.



ACM0409	600 X 450 X 450	1 LOCK
---------	-----------------	--------



ACM0504	800 X 500 X 500	2 LOCKS
---------	-----------------	---------

## MUDGUARD

*Thermoplastics mudguard*



CODE n°	DIMENSIONS mm
---------	---------------

ACM0630	1900 X 1300 X 540
---------	-------------------

## MUDGUARD GREENFLEX

*Mudguard greenflex mud flap with logo*



CODE n°
---------

ACM0763
---------

## MUDGUARD

*Pvc mudguard*



CODE n	DIMENSIONS mm²	NOTE
--------	----------------	------

ACM0488	1250 X 670 X 1950	WHITE BORDER
---------	-------------------	--------------

## MUDGUARD SUPPORT PIPE

*Plastic adjustable mudguard support pipe*



CODE n°	DIAMETER
---------	----------

ACM0495	48
---------	----

## STRAIGHT SUPPORT PIPE

*Straight mudguard support pipe*



CODE n°	LENGTH mm
---------	-----------

ACM0631	540
---------	-----

## CURVED SUPPORT PIPE

*Curved mudguard support pipe*



CODE n°	LENGTH mm
---------	-----------

ACM0822	540
---------	-----



## SUPPORT PIPE

*Straight support pipe in stainless steel*



CODE n°	DIMENSIONS mm
------------	------------------

ACM0796 42 X 450

## CURVED PIPE



CODE N°	DIAMETER mm	NOTE
------------	----------------	------

ACM0491 48 STRAIGHT BLACK COUPLING



## RUBBER WASHER

CODE n°	DIMENSIONS
------------	------------

ACM0839 62 X 17 X 2

## OUTLINE ERICO



CODE n°	DIMENSIONS
------------	------------

PRO0006 41 X 41

## OUTLINE SIDEGUARDS



CODE n°	DIMENSIONS
------------	------------

ACM0144 4800

## FRONT LIGHT BRACKET

*Front light bracket for aluminium underrun bar*



CODE n°	DIMENSIONS	NOTE
------------	------------	------

SEM0126 500 X 180 X 3 2 HOLES(CM 39)

## Z- BRACKET

*Aluminium z-bracket for sideguards*



CODE n°	DIMENSIONS	NOTE
------------	------------	------

SEM0193 500 X 120 X 5 HOLE  $\varnothing$  25

## Z- BRACKET

*Aluminium z-bracket for sideguards*



CODE n°	DIMENSIONS
------------	------------

SEM0194 500 x 120 x 5



## C BRACKET

*Aluminium C bracket for sideguards*



CODE	DIMENSIONS
n°	

SEM0112 700 X 110 X 5

## SIDEGUARD BRACKET

*Aluminium bracket for sideguards*



CODE	DIMENSIONS
n°	

SEM0088 3 HOLES  $\varnothing$  8

## IRON PLATE

*Iron plate for sideguard reinforcement*



CODE	DIMENSIONS
n°	

SEM0311 54 X 34 X 4

## CORNER PROTECTION OUTLINE



CODICE	NOTE
n°	

PRO0009

## LED LIGHTS

*Led lights with lead*



CODE	NOTE
n°	

ACM0195 ORANGE

IEL0067 WHITE

## LED LIGHTS

*Side led lights*



CODICE	NOTE
n°	

ACM0195 ORANGE

IEL0143 WHITE

## SIDEGUARD PLUG



CODE
n°

ACM0121

## DIESEL OIL TANK

*Diesel oil tank in steel for motocompressors*



CODE	DIMENSIONS
N°	mm

ACM1547 600 x 320 x 440



# ACCESSORIES

## RUBBER ROLL



CODE n°	DIMENSIONS	THICKNESS	NOTE
ACM0048		3	BLACK
ACM0337		5	BLACK
ACM0200		6	WHITE
ACM0046	300 X 300		RUMBLE
ACM0605	450 X 2008		RUMBLE

## NUT COVER WITH LOGO



CODE n°	NOTE
ACM0288	

## REFLECTOR SET



CODE n°	NOTE
ACM0240	
ACM0194	LONG TYPE

## REFLECTOR SET



CODICE n°	NOTE
ACM0073	FOR MOTOR ENGINE

## LIMIT DISC



CODE n°	NOTE
ACM0040	Km70
ACM0041	Km80

## LIGHT



CODE n°	NOTE
IEL0014	FOR PRESSURE GAUGES



# Ladder and fittings



**SPARE PARTS**



## LADDER

CODE	NOTE
n°	

SEM0220 DEPENDS ON THE TYPE OF THE TRAILER

## HANDRAIL OUTLINE

*Handrail aluminium outline*



CODE
n°

PRO0005

## RUBBER PAD

*Rubber pad for handrail*



CODE
n°

ACM0014

## HANDRAIL BAR



CODICE	NOTE
n°	

SEM0070 ALUMINIUM STAINLESS STEEL WITH BRACKET

## HANDRAIL BAR



CODE	NOTE
n°	

SEM0243 ALUMINIUM - STAINLESS STEEL WITHOUT BRACKET

## SAFETY RING



CODE
n°

ACM0013

## CYLINDER ISO 6432

*Cylinder iso 6432 for handrail*



CODE	DIAMETER
N°	mm

ACM0023 40 CORSA 500

# Oleodynamic plant



**SPARE PARTS**



## HYDRAULIC TANK



CODE N°	DIMENSIONS mm	CAPACITY lt	NOTE
IDR0031	400 X 700 X 700		STAINLESS STEEL (FOR VOLVO)
IDR0058	550 X 700 X 700	240	SMOOTH STAINLESS STEEL
IDR0101	450 X 630 X 700		INOX -- STAINLESS STEEL
IDR0102	500 X 630 X 690		INOX -- STAINLESS STEEL

## SUCTION COUPLING



CODE N°	INCH	PASS	NOTE
IDR0127	1"1/4	GAS	90°
IDR0128	1"1/4	GAS	45°
IDR0129	1"1/2	GAS	90°

## DISTRIBUTOR



CODE n°	NOTE
IDR0066	D-MP-160/P 160 1F

## VALVE W-MAX



CODE N°	PRESSURE bar	JUNCTION inch	NOTE
IDR0086	160	3/4	IRON

## PUMP



CODE n°	NOTE
IIDR0151	IAT NPH 43 SX 32 X 36 ISO MEC 4 FOR (wide set of pumps)

## ELECTROPUMP



Set electropump 4500w 6cc remote control and coupling

CODE n°
IDR0132

## REMOTE CONTROL



CODE n°
IIDR0012



## CONTROL



CODE  
n°

IDR0100

## RISING AND LOWERING SPRING WITH RETURN TO NEUTRO



CODE  
n°

ACO0248

## PLASTIC SUPPORT AIR SET



CODE  
n°

ACO0249

## CONTROL

*3 way model with spring delay*



CODE  
n°

IDR0028

# Electrical air control and components



**SPARE PARTS**



## PRESSURE REGULATOR



CODE  
n°

ACM0112

## FIXING PLATE FOR REGULATOR



CODE  
n°

ACM0100

## DEVIATOR



CODE NOTE  
n°

- IFR0001 ONE SECTION
- IFR0001 ONE SECTION WITH FIXING
- IFR0002 TWO SECTIONS
- IFR0003 THREE SECTIONS

## DISCHARGE VALVE SERVICE CONTROL



CODE INCH NOTE  
n°

RAC0014 1,8"3/2 BISTABILE

## VALVE WITH LEVER



CODE INCH NOTE  
n°

- RAC0073 1,8" VERTICAL
- RAC0489 1,4" PNEUMATIC VIBRATOR

## CONNECTOR



CODE NOTE  
n°

- IEL0012 SB350
- IEL0013 SB160

## HANDLE



CODE NOTE  
n°

IEL0018 FOR CONNECTORS

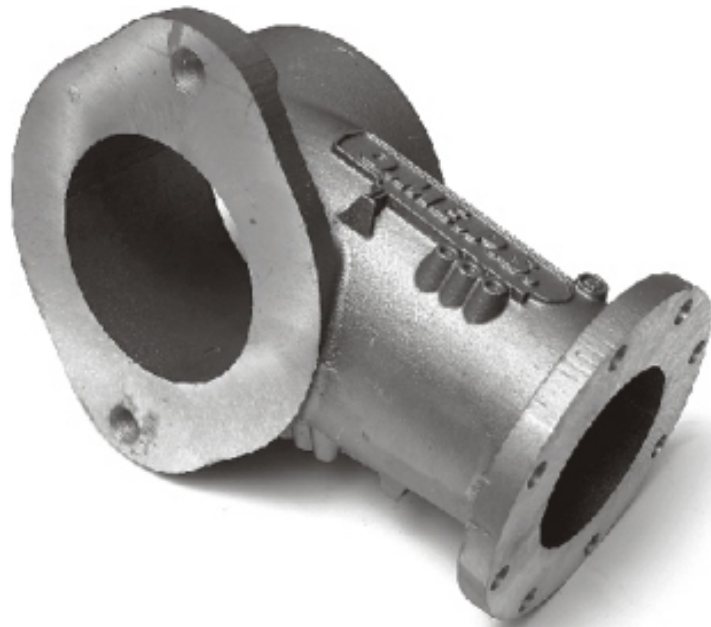
## PNEUMATIC VIBRATOR



CODE TYPE NOTE  
n°

- ACM0170 VK 40 BALL-SHAPED
- ACM0637 VK 35 BALL-SHAPED
- ACM0828 VR 47 ROLLER
- ACM0829 VR 78 ROLLER

# Cup fittings



**SPARE PARTS**





## DISCHARGE BASE

*OMEPS discharge cup base*



CODE	NOTE
n°	

ACM0863 ALUMINIUM

## BASE

*Rear OMEPS discharge cup base*



CODE	NOTE
n°	

ACM0950 ALUMINIUM

## PLUG

*Aluminium oval plug with buttonhole pins for discharge base*



CODE	DIMENSIONS
n°	mm

SEM1113 22 X 285 X 15

## GASKET

*OR gasket for OMEPS discharge cup base*



CODE
n°

ACM09344

## SYNTHETIC PAD

*Fluidising pad for OMEPS vehicles*



CODE	TTPE
n°	

ACM0124 801  
 ACM0125 TL 3  
 ACM0540 1235  
 ACM0541 1085  
 ACM0644

## SYNTHETIC PAD

*OMEPS fluidising pad*



CODE	TYPE	PRESSURE
n°		bar

ACM0128 TL 1 LOW  
 ACM0125 T 31 HIGH  
 ACM0205 T 51



## SYNTHETIC PAD

*Fluidising synthetic pad Adige*

CODE n°	DIAMETER mm
------------	----------------

ACM0126	610 X 110 X 320
ACM0593	840 X 110 X 4000

## GASKET

*Upper gasket for synthetic pad Adige*



CODE n°	DIAMETER mm
------------	----------------

ACM0361	6500
---------	------

## FLANGE

*Aluminium flange for fixing synthetic pad Adige*



CODE n°
------------

ACM0546
---------

## GASKET

*Plug gasket for discharging base Adige*



CODE n°
------------

ACM0809
---------

## SYNTHETIC PAD

*Fluidising synthetic pad MISTRAL*



CODE n°	TYPE
------------	------

ACM0467	TL 4
---------	------



## SYNTHETIC PAD

*Synthetic pad for discharging base PIACENZA*



CODE n°	DIAMETER mm
------------	----------------

ACM0721 540 X 200

## GASKET

*Lower gasket PIACENZA*



CODE n°	DIAMETER mm
------------	----------------

ACM0714 220 x 155 x 15

## SYNTHETIC PAD

*Synthetic pad PIACENZA*



CODE n°	DIAMETER mm
------------	----------------

ACM0621 630 X 200

## GASKET

*Upper gasket PIACENZA*



CODE n°
------------

ACM07133

## GASKET

*Lower gasket PIACENZA*



CODE n°	DIAMETER mm
------------	----------------

ACM0767 280 X 205 X 34

## SYNTHETIC PAD

*Synthetic pad PIACENZA*



CODE n°	DIAMETER mm
------------	----------------

ACM0169 626 X 1955



## SYNTHETIC PAD



*Fluidising synthetic pad for clipper PIACENZA*

CODE n°	DIAMETER mm
ACM0127	850 X 337

ACM0127 850 X 337

## GASKET



*Upper gasket for clipper PIACENZA*

CODE n°	NOTE
ACM0436	32 HOLES

ACM0436 32 HOLES

## GASKET



*Upper gasket for clipper PIACENZA*

CODE n°	NOTE
ACM0471	40 HOLES

ACM0471 40 HOLES

## GASKET



*Lower gasket PIACENZA*

CODE n°	DIAMETER mm
ACM0218	300

ACM0218 300

## SYNTHETIC PAD



*Fluidising synthetic pad PIACENZA*

CODE n°	DIAMETER mm
ACM0065	670 X 335

ACM0065 670 X 335

## GASKET



*Upper gasket PIACENZA*

CODE n°	DIAMETER mm	NOTE
ACM0764	745 X 630 X 15	20 HOLES!

ACM0764 745 X 630 X 15 20 HOLES!