

NEW UP&DOWN

NEW LOW VOLTAGE ROAD BARRIER FOR INTENSIVE USE



Compatible with old
"UP&DOWN" installations



DESCRIPTION:

The new electromechanical barriers 24 Vdc intensive use, improved look, reinforced case, for BL-SMALL boom up to 4 m "new UP&DOWN-4", to 5 m "new UP&DOWN-5" and 6 m "new UP&DOWN-6" with tubular boom \varnothing 85 mm. Settable opening time, ENCODER active safety, hand protection cap and arranged for photocells or key selector mounting.

STRENGTHS:



REINFORCED CASE

Thanks to the new case design and internal additional support, the barriers are much more stable and the movement results without any oscillation.



IMPROVED PERFORMANCES

UP&DOWN designed for BL-SMALL booms up to 5 m and up to 6 m with tubular boom \varnothing 85 mm is up to 2 seconds faster than previous version.



NEW CONTROL BOARD

The barrier is assembled with the new LOG-BR control unit with integrated 64 codes receiver, able to manage barrier's acceleration and deceleration on cycles.



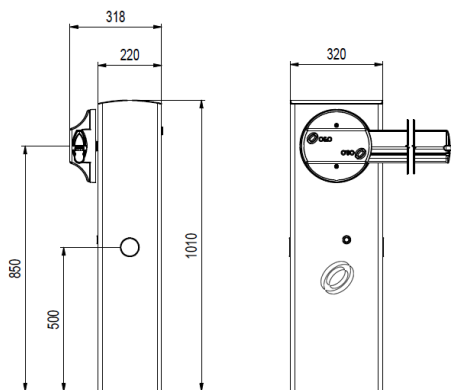
RESCUE BATTERIES

Being 24 Vdc, the UP&DOWN can be equipped with optional with electric battery granting the functioning in case of blackout.

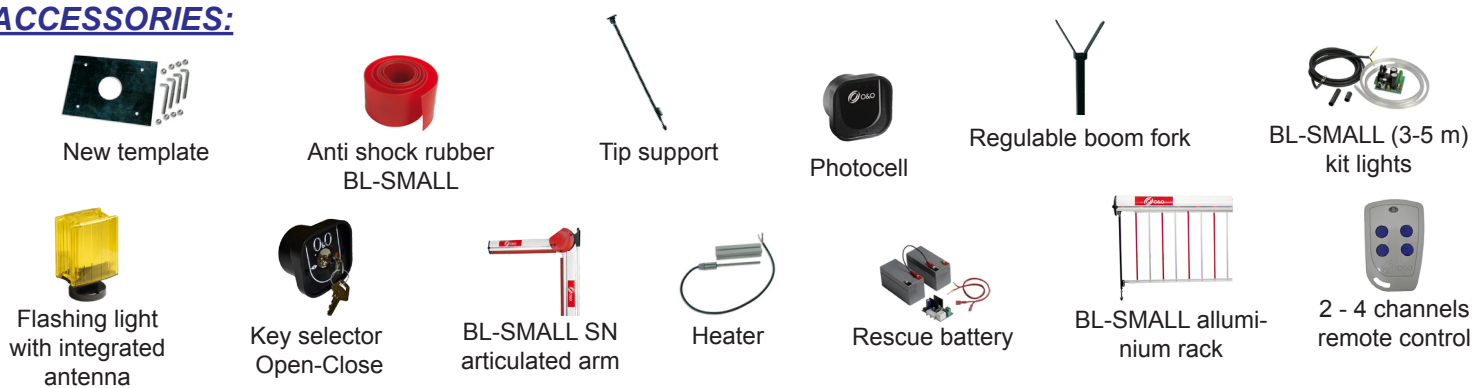


PRODUCT ON CATALOGUE:


| CODE | DESCRIPTION |
|--------|---|
| 321300 | 24 Vdc barriers for boom up to 4 m. Settable opening time from 2,5 to 6 seconds |
| 321310 | 24 Vdc barriers for boom up to 5 m. Settable opening time from 3,5 to 9 seconds |
| 321320 | 24 Vdc barriers for boom up to 6 m. Settable opening time from 3,5 to 9 seconds |
| 321385 | "new UP&DOWN" template with nuts and bolts |

SIZE:

SOME TECHNICAL DETAILS:

- ⦿ Settable opening time (2,5 ÷ 6 Sec. 4m) - (3,5 ÷ 9 Sec. 5m / 6m)
- ⦿ IP54 protection level
- ⦿ -20 °C a +60 °C working temperature
- ⦿ Opening and closing slow down
- ⦿ LOG-BR control unit with integrated receiver build in
- ⦿ Safety reversing with ENCODER
- ⦿ For intensive use

ACCESSORIES:

BL-SMALL VERSIONS:
ACCESSORIES
MAX LENGHTS

| | | UP&DOWN-4 | UP&DOWN-5 | UP&DOWN-6 |
|---------------|--|-----------|-----------|-----------|
| STD | BL-SMALL boom with led lights and protective rubber | 4 m | 5 m | -- |
| STD-v1 | BL-SMALL boom with led lights, protective rubber and tip support | 3,3 m | 4,3 m | -- |
| STD-v2 | BL-SMALL boom with led lights and aluminum rack | 3,2 m | 4 m | -- |
| STD-v3 | BL-SMALL boom with tip support and aluminum rack | 2,8 m | 3,7 m | -- |
| FULL | BL-SMALL boom with led lights, aluminum rack and tip support | 2,7 m | 3,6 m | -- |
| STD-6 | 6 m, Ø 85 mm tubular boom with plastic cap | -- | -- | 6 m |

Do not hesitate to contact us for more informations.