

SignelSense License Plate Recognition

The SignelSense high reliability system runs under Windows operating system implemented on an industrial PC.

His main parts are: a frame grabber card to capture signals from up to four cameras and the software itself.

The SignelSense software has two basic tasks. The license plate recognition module determines the position of the license plate in the picture, and then it recognises characters of the license. After the recognition process, the text information is stored to a data file.



Digitalised picture.
Graphical information is

Recognized characters are

The picture processing



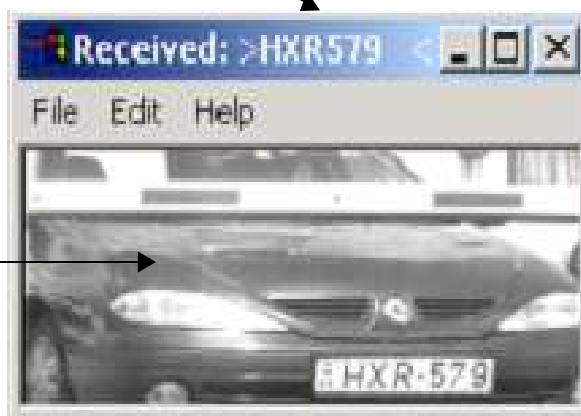
The data file contains all the identifiers of the result (for example: which camera detected the picture – which lane was used by the vehicle).

Transferred data file

The picture-processing module creates a compressed picture file of the original one. (JPG)
Data and picture files are linked to each other rigorously.

Transferred picture file.

Communication module



SignelSense System is able to operate the complete traffic of the border crossing points with traffic lights, inductive loop detectors and barriers. One SignelSense System can operate with 4 cameras; therefore one server manage 4 lanes in the same time. The software runs under WIN/NT/2000/XP operating system. Position of the license plate recognition cameras can be chosen in a wide range. Size of the license plate should be one third of the width of the pictures at the case of the most optimal recognition.