



Concrete Testing Gauge

K1	Rebar Locator TC100/110	P 2
K2	Crack Depth Gauge TC200	P 3
K3	Concrete Thickness Gauge TC300	P 4
K4	Rebar Corrosion Detector TC600	P 5
K5	Concrete Test Hammer TC500N	P 6
K6	Digital Concrete Test Hammer HT225-V	P 7



TC100



TC110

Brief Introduction

●TC100/110 is used to detect the thickness of concrete covering layer and rebar diameter. Besides, it can detect the location of magnetic substance and electric and electric conductor in non-magnetic and non-conductive medium, e.g. cable inside wall body and water & heating pipe etc. It is a kind of intelligent nondestructive test equipment possessing the functions of automatic detection, data memory and output.

Features

- Acceptance inspection of cover after formwork is removed
- Locate rebars to avoid them when drilling holes
- Provide essential data (location, cover, diameter of rebars) for strength calculations of reinforced concrete structures
- Measuring concrete cover thickness
- Quality assurance in mass production of fabricated concrete elements
- Measuring the thickness of concrete over steel reinforcement and metal pipes
- Signal strength bar display and sound alarm for high accuracy
- Real time graphic output both to screen and printer
- Data processing software compatible with windows 95/98/2000/Me/WT/XP
- Auto calibration, correct the system error
- Three scan modes for TC110: grid pattern, profile scan and large area scan
- For TC110: direct display grid and profile image of rebars

TC100/110

REBAR LOCATOR

Standard Delivery (TC100)

- Main unit 1
- Transducer 1
- Software 1
- Signal cable 1
- Shoulder strap 1
- AA battery (LR6) 6
- Key 2
- TIME certificate 1
- Warranty card 1
- Instruction manual 1

Standard Delivery (TC110)

- Main unit 1
- Transducer 1
- Software 1
- Signal cable 1
- Shoulder strap 1
- Connecting cable 1
- Scanning trolley 1
- AA battery (LR6) 6
- Key 2
- TIME certificate 1
- Warranty card 1
- Instruction manual 1

Technical Specification

Covering layer thickness measuring range	Range I :6mm-90mm		
	Range II :7mm-200mm		
Rebar diameter measuring range	Ø6mm- Ø50mm		
Tolerance of covering layer thickness	Range I	Range II	
	±1mm	6mm-59mm	7mm-79mm
	±2mm	60mm-69mm	80mm-119mm
	±4mm	70mm-90mm	120mm-180mm
Display	Large graphic display with backlight		
Operating temperature	-10℃~40℃		
Relative humidity	<90%		
Dimension (mm)	210 x 153 x 90		
Weight (g)	880		

Other special testing conditions

- Avoid strong magnetic field interruption
- Avoid high temperature
- Has no corrosive gas in the atmosphere



Brief Introduction

●TC200 is used to measure concrete crack depth by applying principle of acoustic diffraction. It also can be used to measure propagation velocity of ultrasonic wave in concrete. This instrument is a kind of intelligent nondestructive test equipment possessing the functions of automatic detection, data memory and output.

Features

- Entire English display, clear and easy to use
- Direct digital read out of the crack depth
- Use special bracket to ensure the accuracy of two testing points
- A data base is set up to store and manage completed test data for analysis reporting
- RS232 interface to PC

TC200

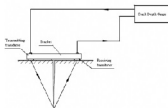
CRACK DEPTH GAUGE

Standard Delivery

●Main unit	1	●Electric torch	1
●Transducer	1	●Shoulder strap	1
●Instruction manual	1	●AA battery (LR6)	6
●Signal cable	1	●Key	2
●Bracket	1	●TIME certificate	1
●Tapeline	1	●Warranty card	1
●Oil pen	1		

Technical Specification

Testing range	4mm~500mm
	≤5mm (when crack depth is less than 50mm)
Tolerance	≤10%W (W means the crack depth) (when the depth is more than 50mm)
Memory	25000 test data
Power	AA batteries (LR6) x 6
Display	Large graphic display
Operating temperature	-10℃~40℃
Humidity	<90%
Dimension (mm)	210x153x90
Weight (g)	880





Brief Introduction

- TC300 is used for measuring the thickness of nonmetallic plate indirectly, especially for concrete slab. This gauge is to measure the concrete slab thickness mainly by using distribution characteristics of electromagnetic field and possesses function of thickness measurement, data analysis, data storage & output etc. it is a kind of intelligent thickness measuring instrument that is portable, convenient and accurate.

Features

- Measuring the thickness of concrete, rock, glass and other nonmetallic plates
- Sound alarm, signal strength bar are used to improve measuring accuracy
- Direct digital read out of the thickness value avoid the inaccuracy of manual comparison
- Test data create and data logging
- RS232 and USB interface to PC
- Real time analysis of the tested data

Standard Delivery

•Main unit	1	•Shoulder strap	1
•Transmitting transducer	1	•AA battery (LR6)	6
•Receiving transducer	1	•AAA battery (LR03)	6
•Supporting bar	5	•Key	2
•Interphone	2	•TIME certificate	1
•Signal cable	1	•Warranty card	1
•Charger	1	•Instruction manual	1

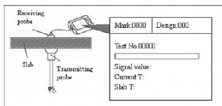
Technical Specification

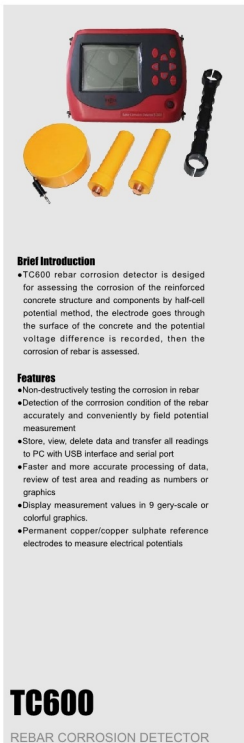
Measuring range	40-820mm
Accuracy	±1mm [When thickness = (40-600mm)]
	±2mm [When thickness = (601-820mm)]
Memory	32000 test data and 4000 components
Power	AA batteries (LR6) x 6
Display	Large graphic display
Operating temperature	-10℃~40℃
	<50%
Dimension (mm)	210 x 153 x 90
Weight (g)	880



TC300

CONCRETE THICKNESS GAUGE





Brief Introduction

●TC600 rebar corrosion detector is designed for assessing the corrosion of the reinforced concrete structure and components by half-cell potential method, the electrode goes through the surface of the concrete and the potential voltage difference is recorded, then the corrosion of rebar is assessed.

Features

- Non-destructively testing the corrosion in rebar
- Detection of the corrosion condition of the rebar accurately and conveniently by field potential measurement
- Store, view, delete data and transfer all readings to PC with USB interface and serial port
- Faster and more accurate processing of data, review of test area and reading as numbers or graphics
- Display measurement values in 9 gery-scale or colorful graphics.
- Permanent copper/copper sulphate reference electrodes to measure electrical potentials

TC600

REBAR CORROSION DETECTOR

Standard Delivery

●Main unit	1	●Measuring tape	1
●Electrode	2	●AA battery (LR6)	8
●Signal cable	2	●Shoulder strap	1
●Connecting bar	1	●TIME certificate	1
●Extension cable	1	●Warranty card	1
●Clamp	1	●Instruction manual	1
●Hygrothermograph	1		

Technical Specification

Measuring method	Potential measurement
Measuring range	±1000mv
Resolution	1mv
Memory	Mass storage
Space between testing points	1~100cm adjustable
Interface	RS232 and USB
Power	AA batteries (1.16)*6
Operating temperature	-10℃ ~+40℃
Humidity	<90%RH
Dimensions (mm)	Main unit 210×163×90
	Probe 630×120
Weight (g)	Main unit 880
	Probe 100



Brief Introduction

- TC500N is a portable instrument to test the compressive strength of concrete structures or rock in non-destructive testing field. The type N hammer is designed for measuring concrete thickness 100mm or more, or concrete with a maximum particle size no more than 32mm.

Features

- Suitable for testing a wide variety of concrete, rock and bricks
- Light, flexible and simple operation
- Friction adjusted by the pointer
- Adopt stretching techniques to make the button work well
- Supplied with carbonundum stone to prepare to test surface

TC500N

CONCRETE TEST HAMMER

Standard Delivery

• Hammer	1	• Radius gauge	1
• Carbonundum stone	1	• Carrying case	1
• Flip tension spring	1	• TIME certificate	1
• Buffer spring	1	• Warranty card	1
• Screwdriver	1	• Instruction manual	1

Technical Specification

Model	TC500N
Measuring range	10-60 Mpa
Impact energy	2.207Nm
Spring extension	75±0.3mm
Friction of pointer system	0.65±0.15N
Length of pointer	20.0±0.2mm
Radius of spherical tip	25±1.0mm
Working length of the spring	61.5±0.3mm
Mean value of steel-anvil rating	80±2mm
Flip tension spring rigidity	785.0±40.0N/m
Operating temperature	0°C~40°C
Storage temperature	-10°C~50°C
Dimensions (mm)	Hammer: 280×ø60
	With case: 320×170×86
Weight(g)	Hammer: 1000
	With case: 2200



Brief Introduction

●HT225-V is a portable instrument to test the compressive strength of concrete structures or rock in non-destructive testing field. The rebound value can be converted into a reading on the digital display, and the estimated mean value, standard deviation and concrete strength can be shown.

Features

- The main unit integrated with the sensor, portable design
- True color LCD screen, high resolution of 176*220mechanical hammers
- Powered by high-capacity rechargeable lithium battery
- Non-contact grating sensor with high precision
- Unique sound alarm of rebound value
- Easy to generate report by printer on the spot
- Automatic delete exceptional value and calculate component results
- Possibility to store, display and transfer data to PC with USB interface

HT225-V

DIGITAL CONCRETE TEST
HAMMER

Standard Delivery

- Main unit 1
- Software 1
- USB connecting cable 1
- Power charger 1
- Carborundum stone 1
- TIME certificate 1
- Warranty card 1
- Instruction manual 1

Optional Accessory

- Printer
- Power charger for printer (9V/2V)

Technical Specification

Model	HT225-V
Measuring range	10-70MPa
Impact energy	2.207J
Spring extension	75mm
Display	16-bit true color, 176x220 resolution
Data storage	480000 testing results
Mean value of steel-anvil rating	80±2
Flip tension spring rigidity	785N/m
Power	Rechargeable lithium battery
Power consumption	Maximum backlight situation=100mA (voice off)
Interface	USB2.0 full-speed
Weight (g)	1100