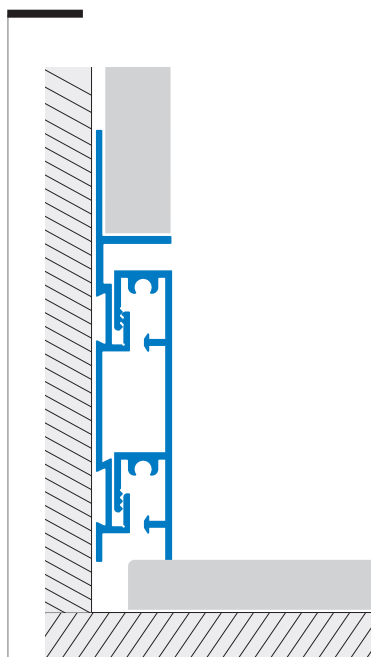


plano design skirting seamless effect



plano BF



PLANO BASE BF 600 ASN Silver Anodised Aluminium

This anodised aluminium profile has a silver coating.
Good tolerance of the visible side to aluminium natural oxidation.

PLANO TOP BF 550 ASN Silver Anodised Aluminium

This anodised aluminium profile has a silver coating.
Good tolerance of the visible side to aluminium natural oxidation.

PLANO TOP BF 550 AM 11 Aluminium powder coated-Mat White

This aluminium profile is lacquered with polyester powder base varnish in order to guarantee tolerance against main domestic cleaning products and atmospheric agents as well as UV rays.

PLANO TOP BF 550 RO* Wooden Oak

Wooden Oak profile, available gloss painted or natural, treatable with a suitable coating or protective oil to achieve the required colour.

Can a skirting be an integral part of the design?
With the new Plano Design range it can.

The Plano Design range has been developed to be installed as part of the wall, giving a fully coordinated finish to both the wall and floor and becoming an integral element of the design.

The base of the system is built into the wall structure, being fitted with the plaster and plasterboard (drywall) for a flush finish. The decorative finishing profile then fixes to the base, creating a seamless effect.

The interlocking finishing profile can be adjusted up to 5 mm in height to allow for slight undulations in the floor.

Patented system "Plano Design"

Illustrated scale dimension 1:1



Material: Extruded anodised aluminium
Colour : Silver
Length: 4,00 metres
BASE Visible height: 60 mm

Material: Extruded anodised aluminium
Colour : Silver
Length: 4,00 metres
TOP height : 55 mm

Material: Extruded powder
coat aluminium
Colour: White Mat
Length: 4,00 metres
TOP height : 55 mm

Material: Solid Wood
Colour: RON Natural Oak
Colour: RO Gloss painted Oak
Length: 4,00 metres
Top height: 55 mm

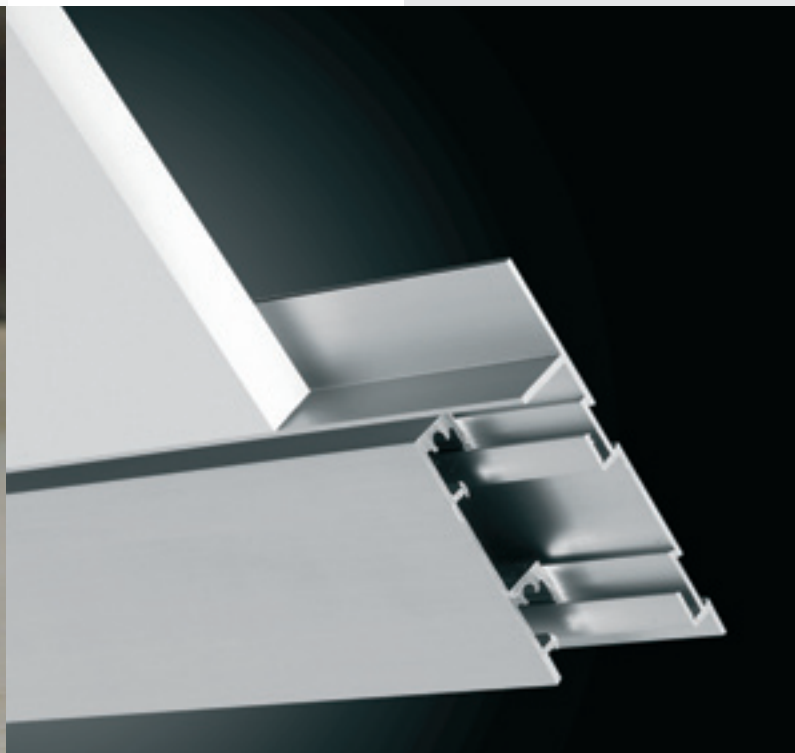
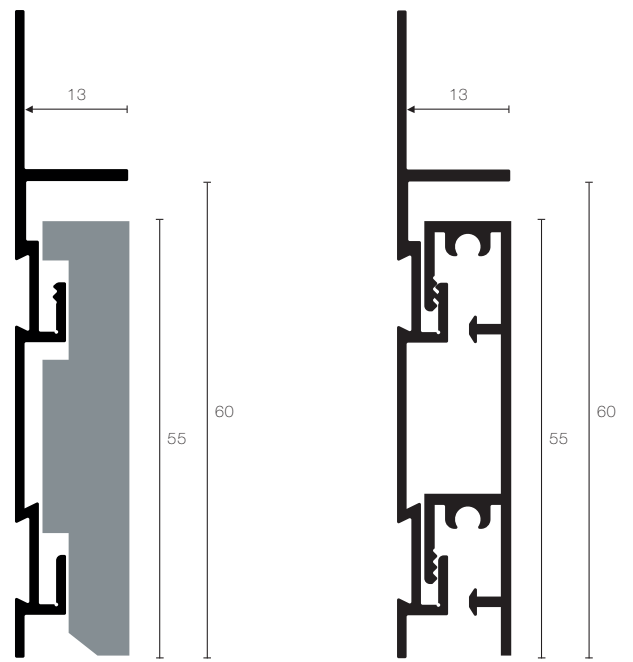
H = mm	Art.
60	BF 600 ASN

H = mm	Art.
55	BF 550 ASN

H = mm	Art.
55	BF 550 AM11

H = mm	Art.
55	BF 550 RON
55	BF 550 RO

External Corner junction and end-cap conceived to avoid the 45° cut. Available for the silver anodised and mat white versions, codes BFC 550 AS (silver) and BFC 550 AM 11 (mat white). There is no need of internal corner pieces as the profiles overlap, thus compensating possible cut imperfections.



The finishing profile is available in three finishes to co-ordinate with any interior design: a powder coated finish to harmonize with the wall colour, anodised aluminium for a modern look or in an oak finish to complement floors and furniture.

The support profile is installed at the same time as the wall finish to sit flush with the wall, acting as the wall base and allowing the plasterworks to be neatly finished.

The finishing profile is fixed once the floor and wall coverings have been fitted and allows for minor differences in floor height +/- 2, 5 mm.



skirting boards