

## Advance Structural Analysis & Design



Industrial

Residential

Commercial

Steel Frame

Water Tanks

Concrete Frame

Retaining Walls

Shopping Centers

Piled Foundations

Pre – Cast Concrete

Compliance Checking

Geotechnical Surveys

Multi Story Car Parks

Condition Surveys

Dewatering system

Combining  
Local Knowledge &  
International Standards  
Euro code  
British Standards  
SNiP & US Codes



### Who we are?

**STRUCON PROJECT** is a Structural Engineering Company with national and international experience. We design to Euro, British, US and SNiP codes of practice and adopt these codes to suit local conditions and practice in other countries such as Ukraine, Kazakhstan or for country from Middle East and Asia. Our philosophy is to offer our clients solutions that satisfy National or International criteria as required. We supply design solutions for all of the construction type: concrete & steel structure, precast solutions, piled raft foundations, barrettes and slurry wall, retaining walls and top-down excavation, bridge, airport, water tanks, oil refinery. We offer design services for Concept Stage, Permit & Tender Stage or full Detailed Design for concrete or steel structure.

### Our projects

#### • Colentina River Plaza

A permit and tender design stage of 60000m<sup>2</sup> mix use of offices, retail and parking project. Main building will be 65m tall with a structure consisting of: composite columns, eccentric steel bracing, steel beams and composite steel deck. Do to a very weak soil, a piled raft foundation was chosen.



#### • Radisson SAS Hotel, Alushta, Ukraine

Mix reinforced concrete frames and shear walls structure, 34000 sq m, 10 storey and 3 basement floors placed in south-east of Crimea. The coast of Crimea with Black See is a 9 MSK earthquake area.



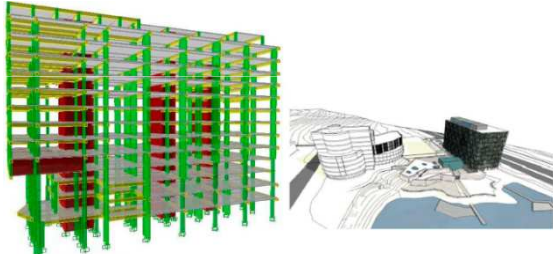
#### • Novotel Hotel, Almaty, Kazakhstan

Concept, Permit, Tender and Detail design for a 4 star hotel. The project divided on 3 blocks, consist on 13000 sq m in 9 MSK seismic zone.



• **Radisson SAS Hotel, Zaporozhe, Ukraine**

The planned investment is Radisson SAS Hotel with 23500sqm, having a thirteen storey RC frame, with large cantilevered sections to form internal atria and also on the façade. Working to Ukrainian Codes presented an initial challenge which we were happy to undertake.



• **Budo Best**

Detail design for a mix use building: office, storage, production and sports area for martial arts company. Five storey height and 5m deep basement.



• **COLOSSEUM Shopping Centre**

STRUCON PROIECT is providing Consultancy service for Structure, Roads and Utilities connection, for the biggest retail project of South-Eastern Europe and one of the largest Shopping Centers in Europe, the "The Colosseum Shopping Centre".



• **World Trade Center Constanta**

Due Diligence, Value Engineering, Technical expertise, Consolidation and Detail design for a mix use project: parking space, shopping centre, two office towers, 4 star hotel with 250 rooms, art gallery, cinema, restaurants and bowling.



**Our Staff**

We have put together a team of Romanian and International engineers with diverse experience, our ambition is to satisfy the dynamic construction sector in Romania and expand into the emerging markets in Central and Eastern Europe, Middle East and Asia.

Our services include: **structural design, consultancy, value engineering, site inspection, due diligence and feasibility study** for all type of construction from steel, concrete, masonry or wood.

*We look forward to discuss your requirements in the near future.*

Presented by:  
Dr. eng. SILVIU GINJU  
- General Manager -

Adress:  
B-dul. Corneliu Coposu nr. 3  
bl. 101, sc. 4, storey 7, sector 3,  
Bucharest, Romania  
P +40 212 273 855  
F +40 212 273 856  
[office@strucon.ro](mailto:office@strucon.ro)  
[www.struconproject.ro](http://www.struconproject.ro)

