

VERTEX

MULTISENSOR MEASURING CENTER™

The Vertex Multisensor Measurement Systems implement new technologies to provide speed and accuracy on reliable and affordable measuring machines.

The systems include InSpec Metrology Software, a programmable optical zoom, 3x digital zoom, non-linear stage compensation, non-linear optics compensation, and advanced LED lighting.

InSpec Metrology Software provides point-and-click simplicity, proprietary edge detection, advanced lighting control and calibration, multi-sensor integration, automated calibrations, and a clear display of measurement data and tolerances.

Multisensor



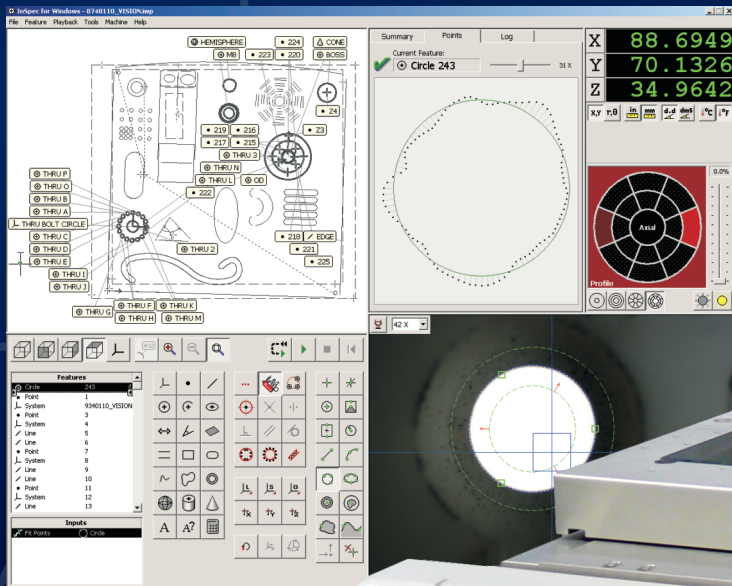
Vision



Touch



Laser



MICRO-VU CORPORATION

PRECISION MEASUREMENT SYSTEMS SINCE 1959

VERTEX

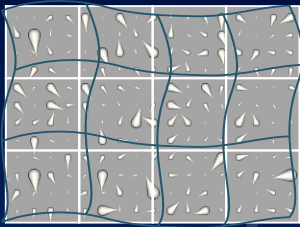
MULTISENSOR MEASURING CENTER™

	Encoder Resolution	XY Accuracy	Z Accuracy	Measurement Capacity	Stage Capacity	Machine Dimensions	Machine Weight
Vertex 251	0.1 µm	2.0+L/250	2.0+L/200	250x160x160mm	10 kg	606x808x1033mm	120kg
Vertex 311	0.1 µm	2.6+L/175	3.0+L/150	315x315x160mm	10 kg	718x1084x1029mm	150kg
Vertex 312	0.1 µm	2.6+L/175	3.0+L/100	315x315x250mm	10 kg	718x1084x1208mm	160kg

Specifications subject to change without notice. Accuracy units are microns; length L units are millimeters.

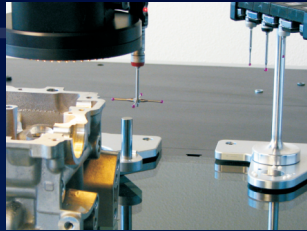
Non-Linear Calibration

Ensures Highest Accuracy
Standard for Stage and Optics
Automated Procedures



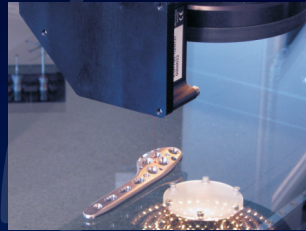
Touch Probe Ready

Automated Probe Calibrations
Automatic Approach Vectoring
Automated Docking



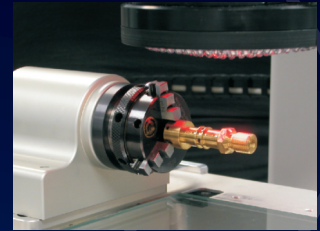
Laser Probe Ready

Point and Path Data
Graphical Range Display
Automated Laser Calibrations



Rotary Indexer Ready

Vertical and Horizontal Mounting
Faceplate and Chuck Included
Automated Rotary Calibration



Machine

Precision X, Y, and Z Linear Ways
Motorized, Programmable Zoom Lens
Proprietary Control and Amp Boards
Machine Resident Calibrations
Single USB Connection to Computer

Camera and Optics

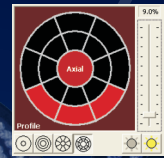
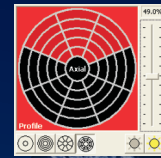
Digital, Hi-Res Video, Color (C series)
Digital, Hi-Res Video, B&W (M series)
19.5:1 Zoom Range, ~20x-390x (H Series)
36:1 Zoom Range, ~15x-540x (U Series)
Fast Servo Drive Magnification Changes
Instant Digital Magnification Changes

InSpec Metrology Software

Dynamic Sub-Pixel Image Processing
Point Edge Detection Tools
Multiple Point Edge Detection Tools
Video Overlays and Crosshair
On-Screen Scale
Feature Constructions
Tool Property Editing
Lights, Zoom, and Zone Editing
Instant Tool Editing on Stored Images
Advanced Dimensioning and Tolerancing
Automated Export Settings
Automatic Report Construction
Feature Summary Display
Data Points Display (Whisker Charts)
Feature Status Log Display
Full Screen, Window, and Dual Monitor Display
Image Capture and Export to JPG or BMP
User Configuration and Password Protection

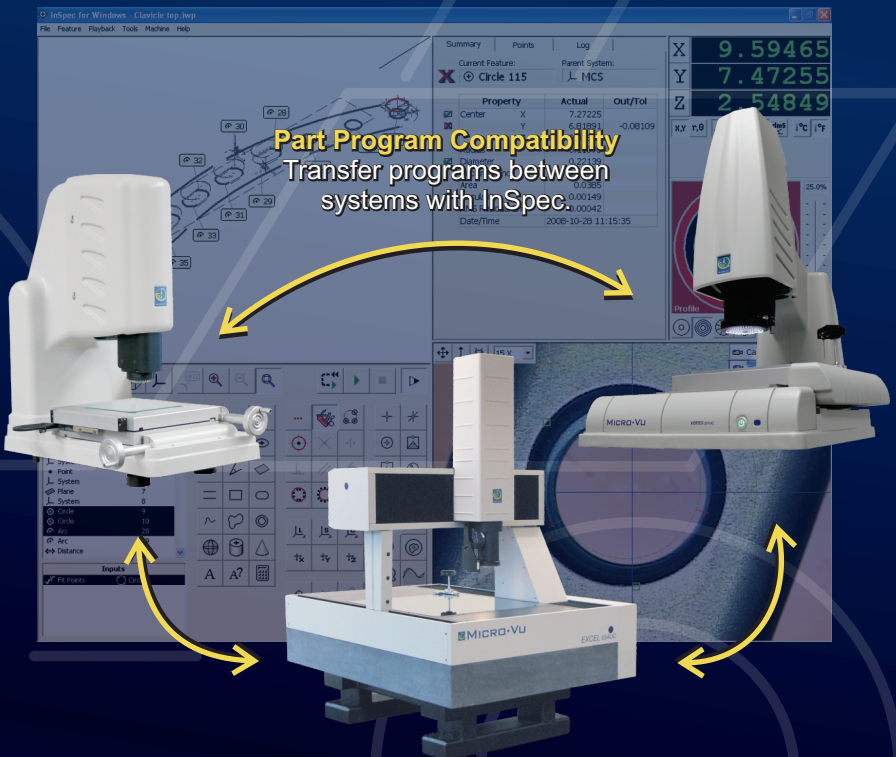
Advanced Illumination

LED Lighting - Surface, Profile and Axial
Multi-Ring, Multi-Sector Ringlights
Lighting Angles from 25 to 90 Degrees
Intuitive Graphic Interface
Full Control to Enhance Edges
Long Life LEDs (approx 10,000 hrs)
InSpec Includes Lights Calibration



Part Program Compatibility

Transfer programs between systems with InSpec.



Micro-Vu Corporation

7909 Conde Lane Windsor, CA 95492 USA
Phone 707 838 6272 Fax 707 838 3985

www.microvu.com