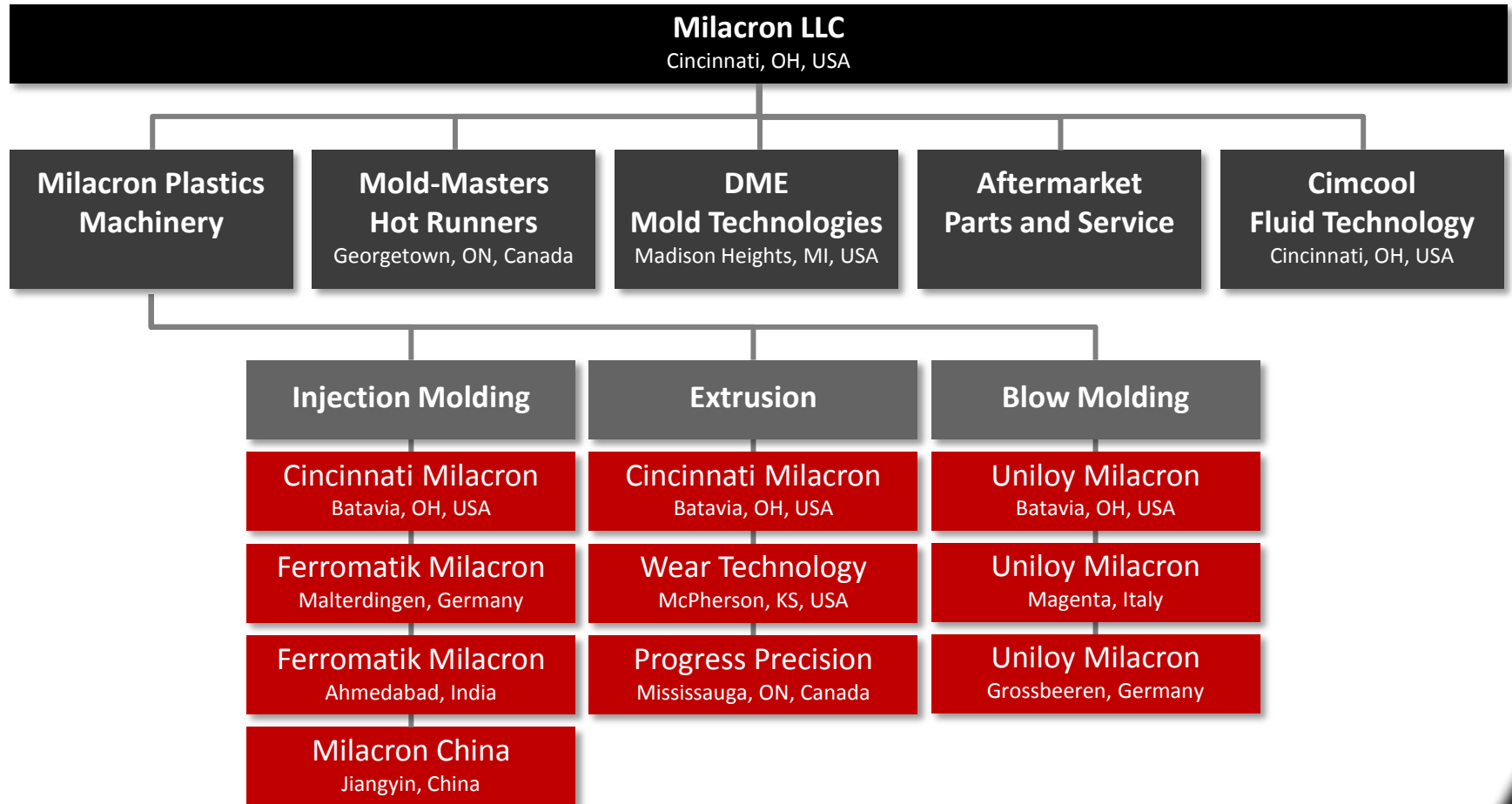


Welcome to Ferromatik Milacron





COMPANY



- Founded in 1884
- 4,100 employees
- 1.1 billion \$ sales

Milacron Injection Molding Locations



History

1956

Founding

1974

2C Machine

1991

K-TEC Series

1992

ELEKTRA Series

1993

Acquisition by Milacron

1994

ISO 9001 Quality

1997

CUBE Machine

1998

MAXIMA Series

2001

6C Machine

2004

MOSAIC Control

2010

ISO 14001 Environment
ELEKTRON Series
F-Series

2013

BS OHSAS 18001
Health and Safety

Factory Tour

Ferromatik Milacron



- 88,000 m² facility
- 280 employees
- 65 million € sales

Factory Tour

Research & Development



- Mechanics
- Electrics
- Hydraulics
- Software

Factory Tour Machining



- Key components
- Flexible manufacturing system
- 3-shift-work

Factory Tour Assembly



- Modular machines
- Hydraulic and hybrid machines
- All-electric machines
- CUBE machines

Factory Tour Applications & Systems Center



- Production proposals
- Injection molding trials
- Acceptance tests
- System solutions

Factory Tour Training Center



- Maintenance
- Machine setting
- Process optimization
- Individual training

Factory Tour Apprenticeship Center



- Industrial vocational training
- Commercial professional training
- Academic professional training
- 600 trainees in total

Factory Tour

Customer Service



- Service hotline
- Service technicians
- Spare parts
- Retrofits

PRODUCTS

The image features a vibrant red background with a subtle grid pattern. On the left side, a thick, glowing pink wave-like shape curves across the frame. At the bottom, a perspective view of a road is shown, with solid white lines for the edges and a dashed white line for the center, receding into the distance.

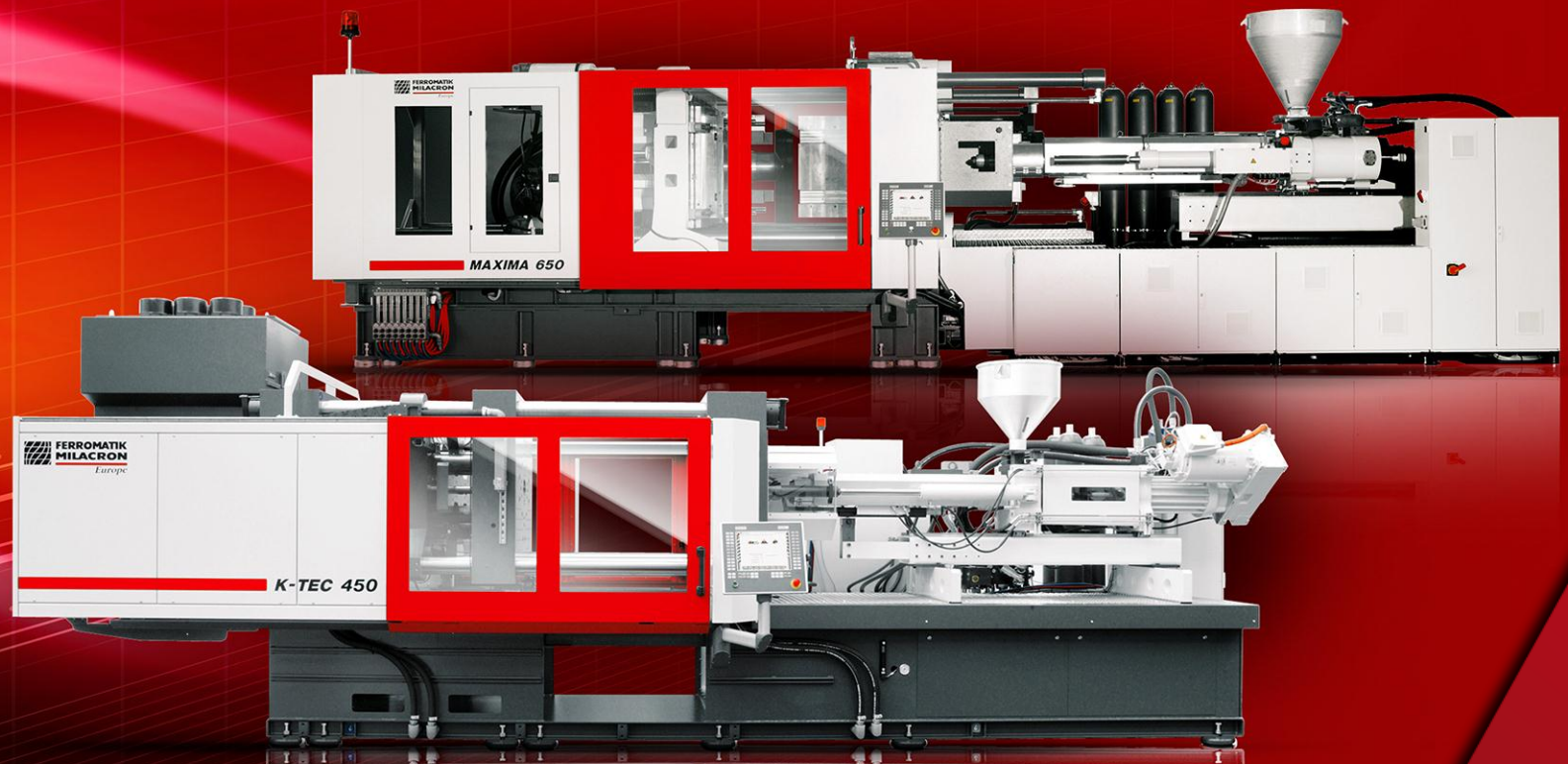
Modular Machines

- F-Series: 500 to 6,500 kN



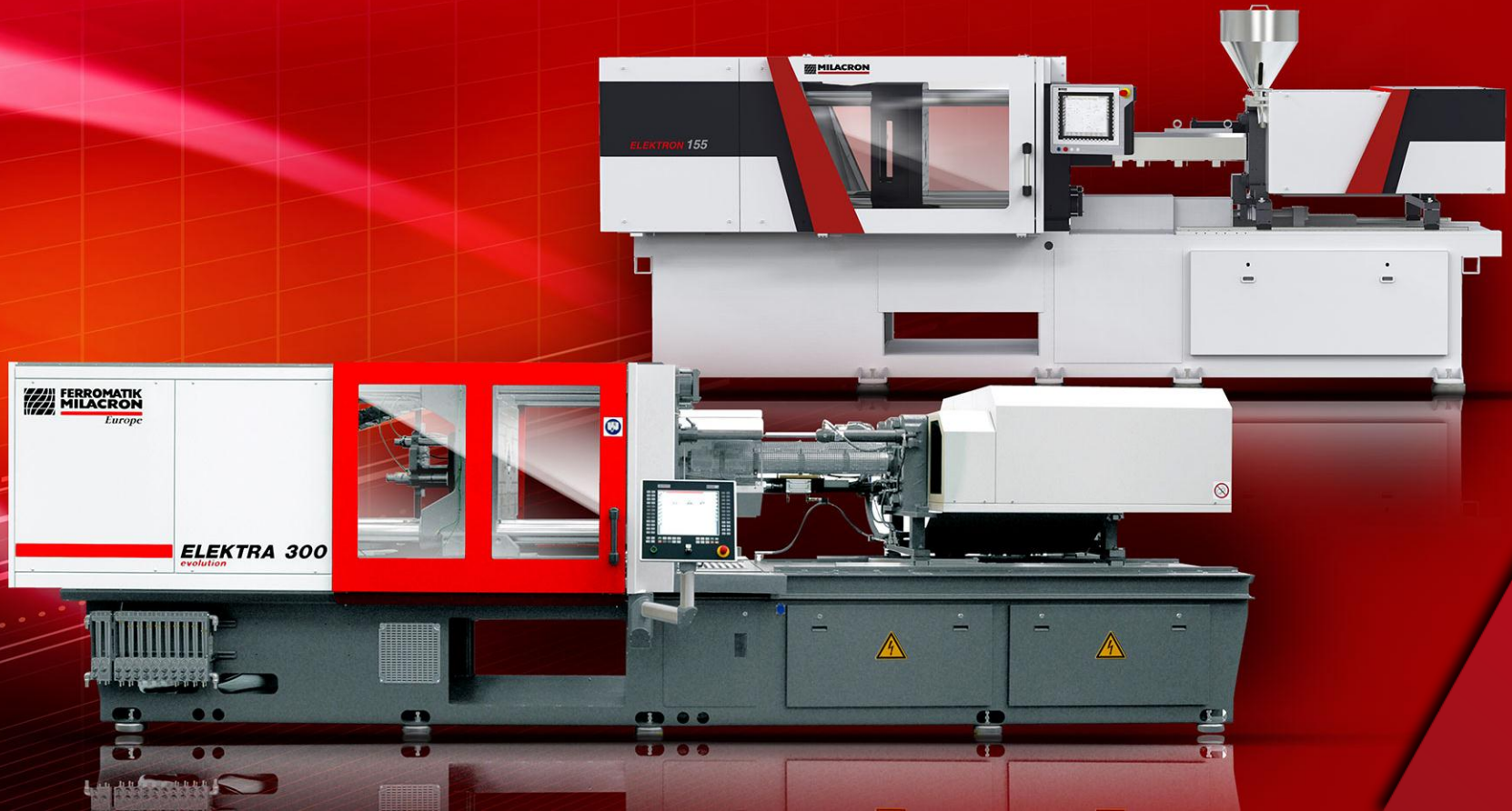
Hydraulic and Hybrid Machines

- K-TEC: 1,550 to 4,500 kN
- MAXIMA: 5,000 to 13,000 kN



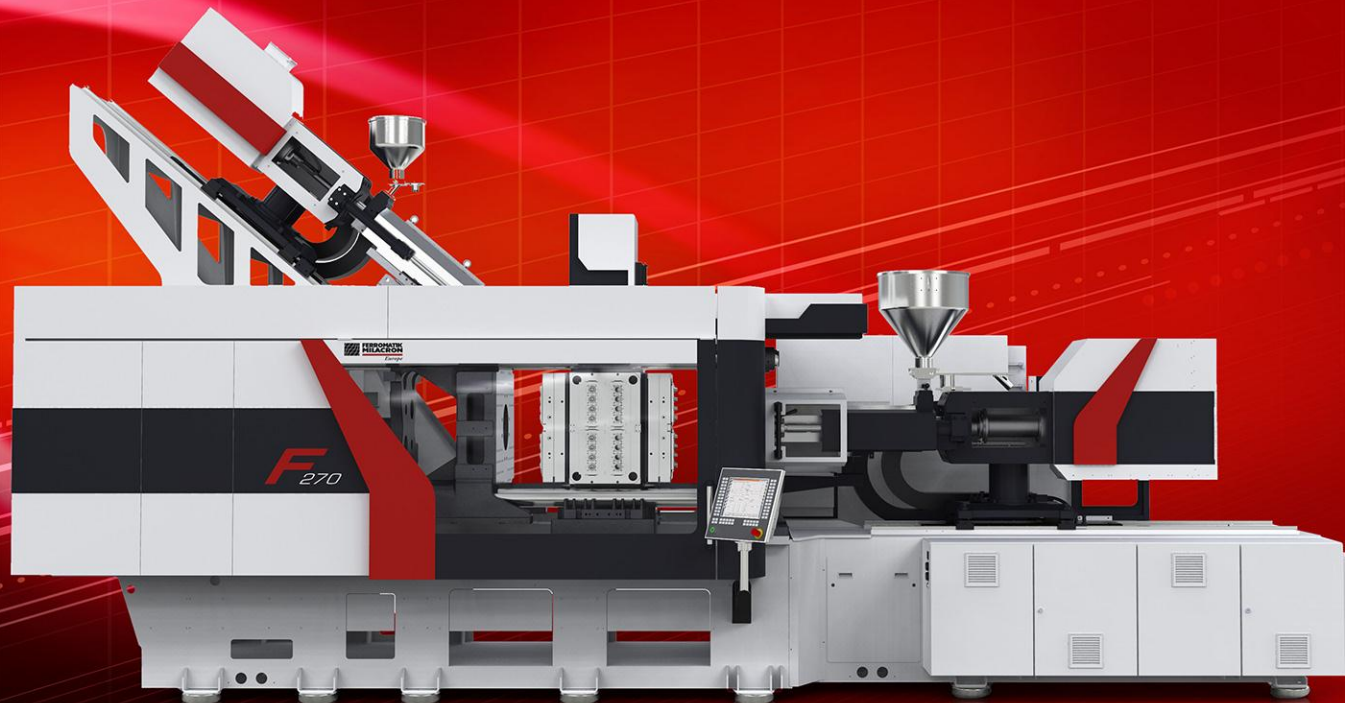
All-electric Machines

- ELEKTRA: 300 to 3,000 kN
- ELEKTRON: 500 to 4,500 kN



CUBE Machines

- CUBE Machines: 2,000 to 13,000 kN
- Stack-turning, cube and twin cube molds
- Over 200 cube machines and 350 molds are in production worldwide

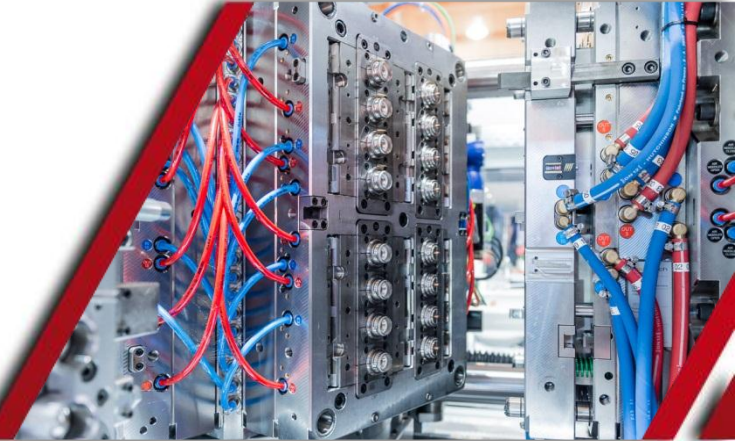


APPLICATIONS



Technologies

- **Classic multi-component technology**
 - Transfer
 - Core back
 - Rotary table
 - Index cavity
- **Monosandwich**
- **CUBE technology**
 - Stack-turning
 - Cube
 - Twin cube
- **In-Mold-Labeling**
- **Fluid injection technology**
- **Foaming technology**
- **Silicone injection molding (LSR)**



Industries

- Packaging
- Consumer Goods
- Medical
- Electrical & Telecommunication
- Automotive



Customers

Abstract

