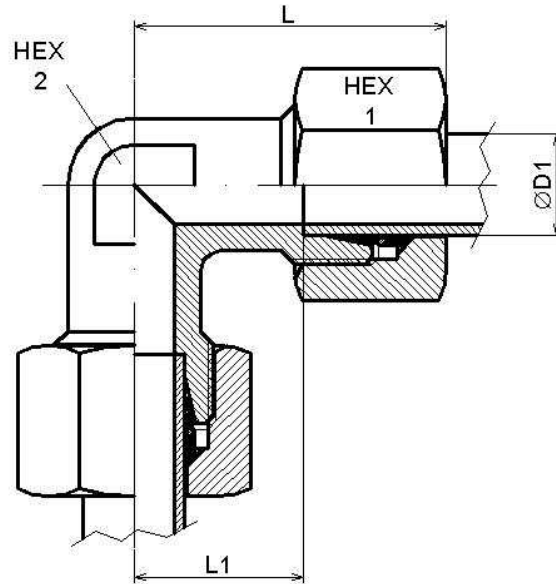


Equal elbow coupling (pipe-pipe)

Mild Steel



Part n°	ØD1	Serie	Working Pressure (bar)	L	L1	HEX 1	HEX 2
ELL 4	4	LL	100	21,0	11	10	9
ELL 6	6	LL	100	21,0	9,5	12	9
ELL 8	8	LL	100	23,0	11,5	14	12
EL 6	6	L	500	27,0	12	14	12
EL 8	8	L	500	29,0	14	17	12
EL 10	10	L	315	30,0	15	19	14
EL 12	12	L	315	32,0	17	22	17
EL 15	15	L	315	36,0	21	27	19
EL 18	18	L	315	40,0	23,5	32	24
EL 22	22	L	250	44,0	27,5	36	27
EL 28	28	L	250	47,0	30,5	41	36
EL 35	35	L	160	56,0	34,5	50	41
EL 42	42	L	160	63,0	40	60	50
ES 6	6	S	630	31,0	16	17	12
ES 8	8	S	630	31,0	17	19	14
ES 10	10	S	630	34,0	17,5	22	17
ES 12	12	S	630	38,0	21,5	24	17
ES 14	14	S	630	40,0	22	27	19
ES 16	16	S	420	43,0	24,5	30	24
ES 20	20	S	420	48,0	26,5	36	27
ES 25	25	S	420	54,0	30	46	36
ES 30	30	S	400	62,0	35,5	50	41
ES 38	38	S	315	72,0	41	60	50