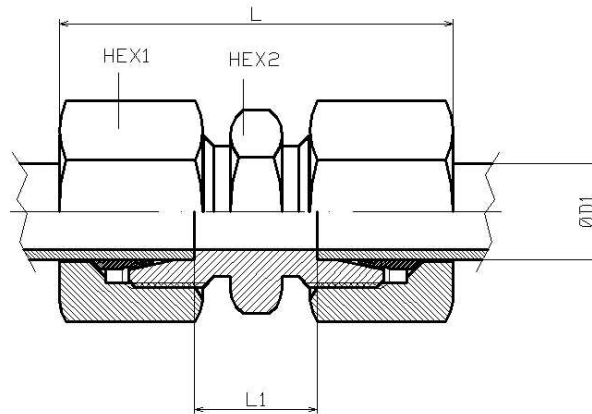


**Straight coupling (pipe-pipe)**

Mild Steel



Part n°	ØD1	Serie	Working Pressure (bar)	L	L1	HEX 1	HEX 2
<b>DLL 4</b>	4	LL	100	31	12	10	9
<b>DLL 6</b>	6	LL	100	32	9	12	12
<b>DLL 8</b>	8	LL	100	35	12	14	12
<b>DL 6</b>	6	L	500	39,0	10	14	12
<b>DL 8</b>	8	L	500	40,0	11	17	14
<b>DL 10</b>	10	L	500	42,0	13	19	17
<b>DL 12</b>	12	L	400	43,0	14	22	19
<b>DL 15</b>	15	L	400	46,0	16	27	24
<b>DL 18</b>	18	L	400	48,0	16	32	27
<b>DL 22</b>	22	L	250	52,0	20	36	32
<b>DL 28</b>	28	L	250	54,0	21	41	41
<b>DL 35</b>	35	L	250	63,0	20	50	46
<b>DL 42</b>	42	L	250	66,0	21	60	55
<b>DS 6</b>	6	S	630	45,0	16	17	14
<b>DS 8</b>	8	S	630	47,0	18	19	17
<b>DS 10</b>	10	S	630	49,0	17	22	19
<b>DS 12</b>	12	S	630	51,0	19	24	22
<b>DS 14</b>	14	S	630	57,0	22	27	24
<b>DS 16</b>	16	S	420	57,0	21	30	27
<b>DS 20</b>	20	S	420	66,0	23	36	32
<b>DS 25</b>	25	S	420	74,0	26	46	41
<b>DS 30</b>	30	S	420	80,0	27	50	46
<b>DS 38</b>	38	S	315	90,0	29	60	55