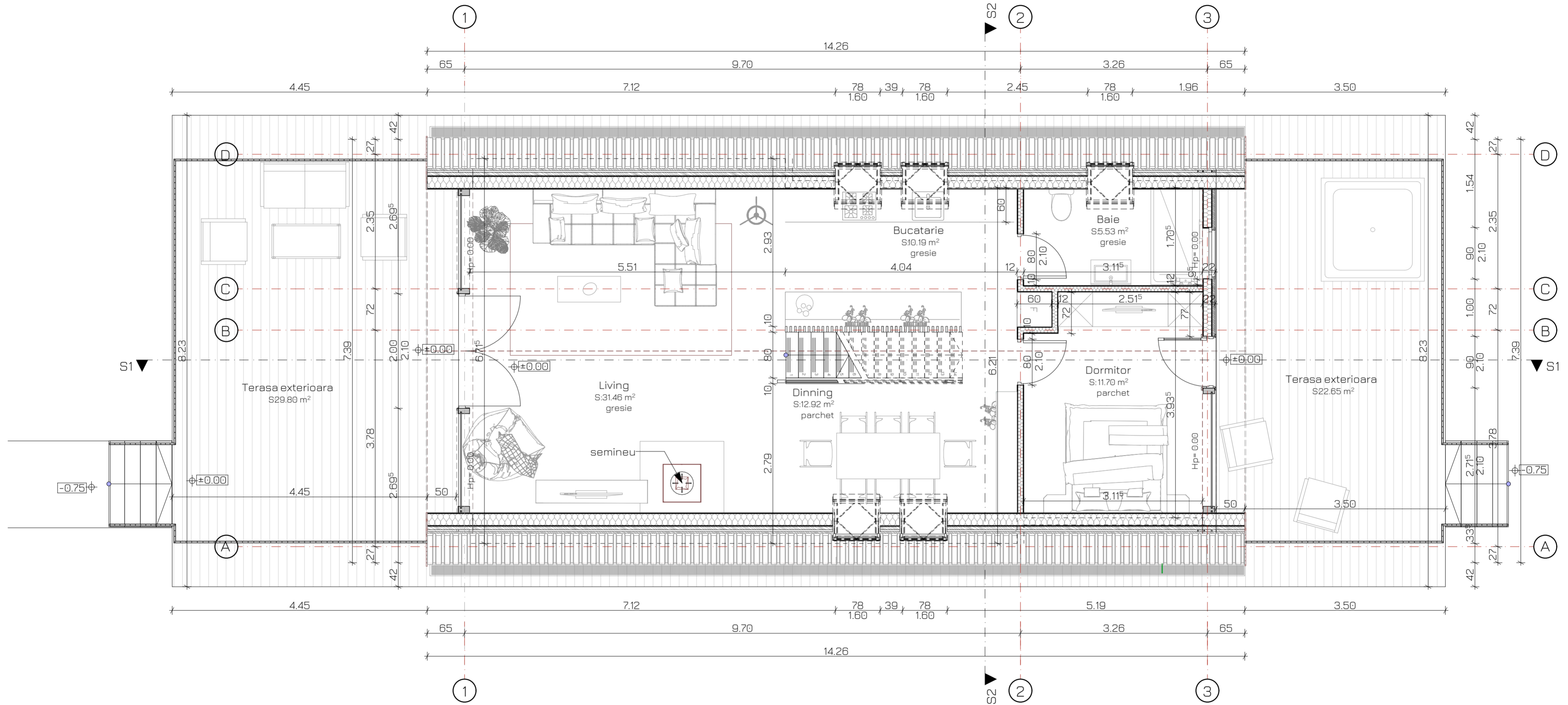
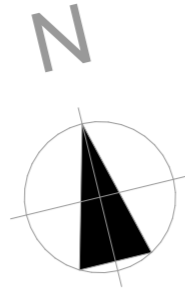


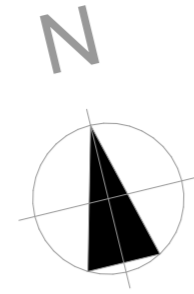
Camera	Suprafata
Bucatarie	10.19 mp
Living	31.46 mp
Dinning	12.92 mp
Dormitor	11.70 mp
Baie	5.53 mp
S. construit	97.77 mp
S. util.	71.80 mp

Terasa exterioara	29.80 mp
Terasa exterioara	22.65 mp

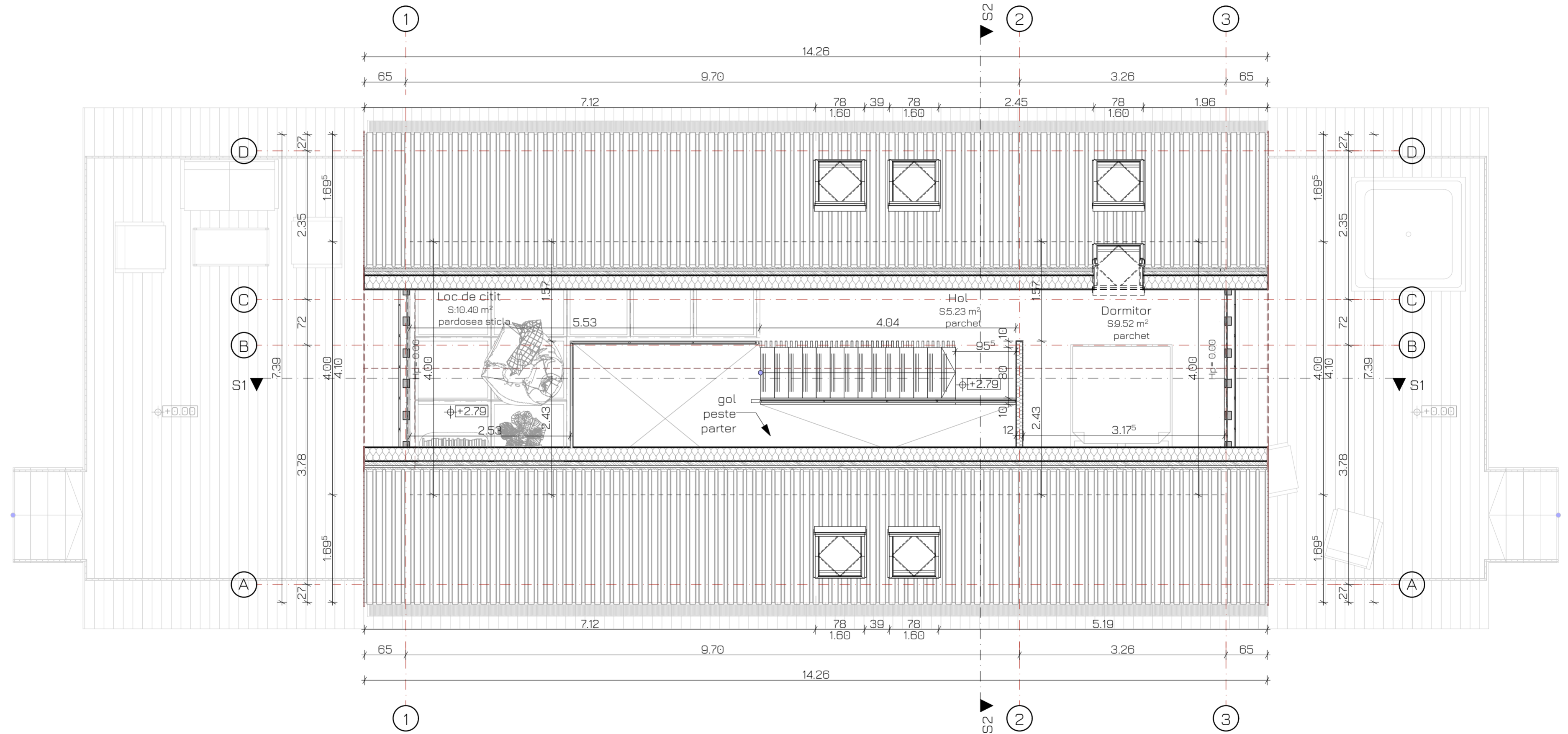
NOTA: Avand in vedere panta acoperisului de 64°, inaltimea spatiului util se ia in considerare de la inaltimea de 1.00 m in sus

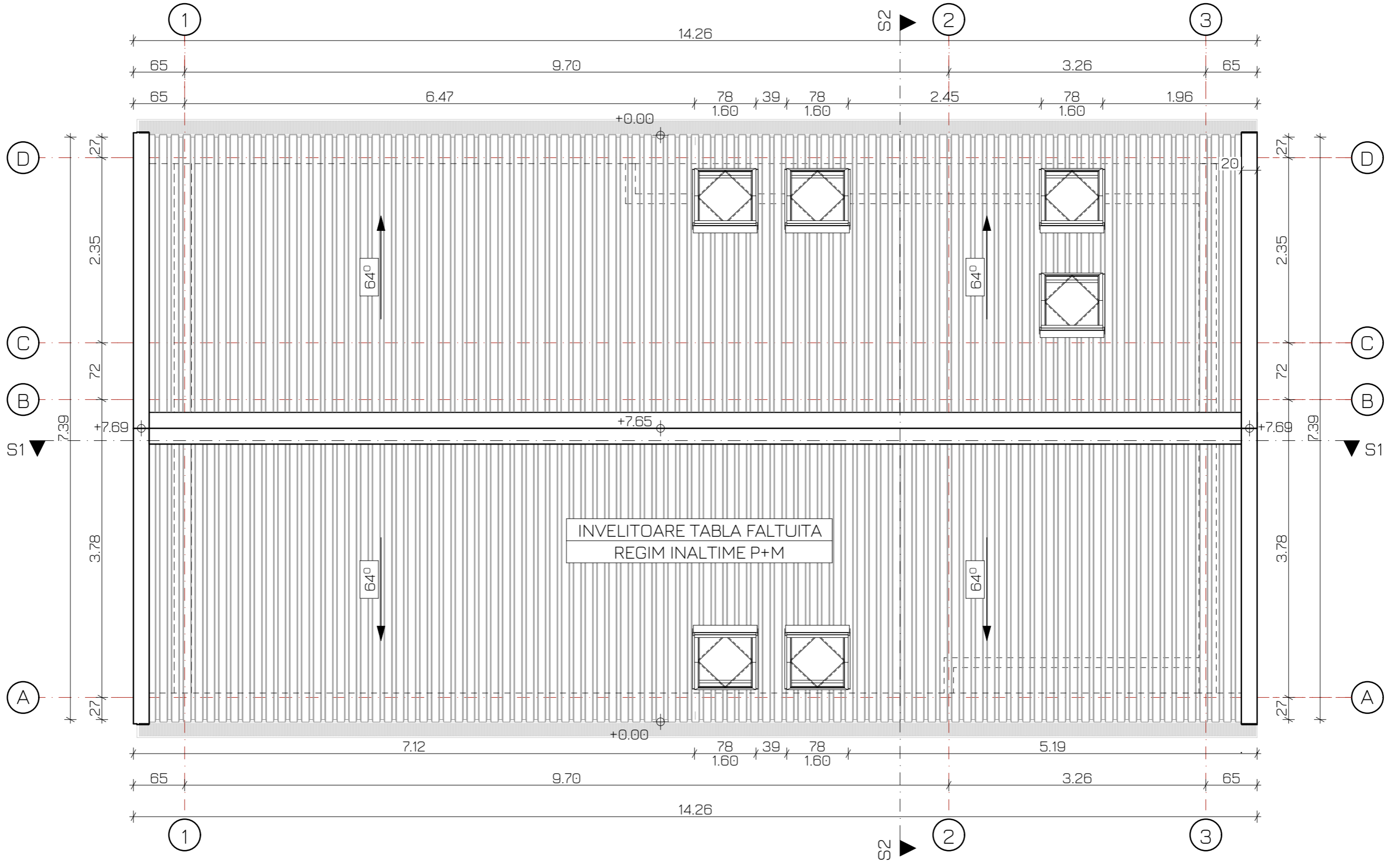


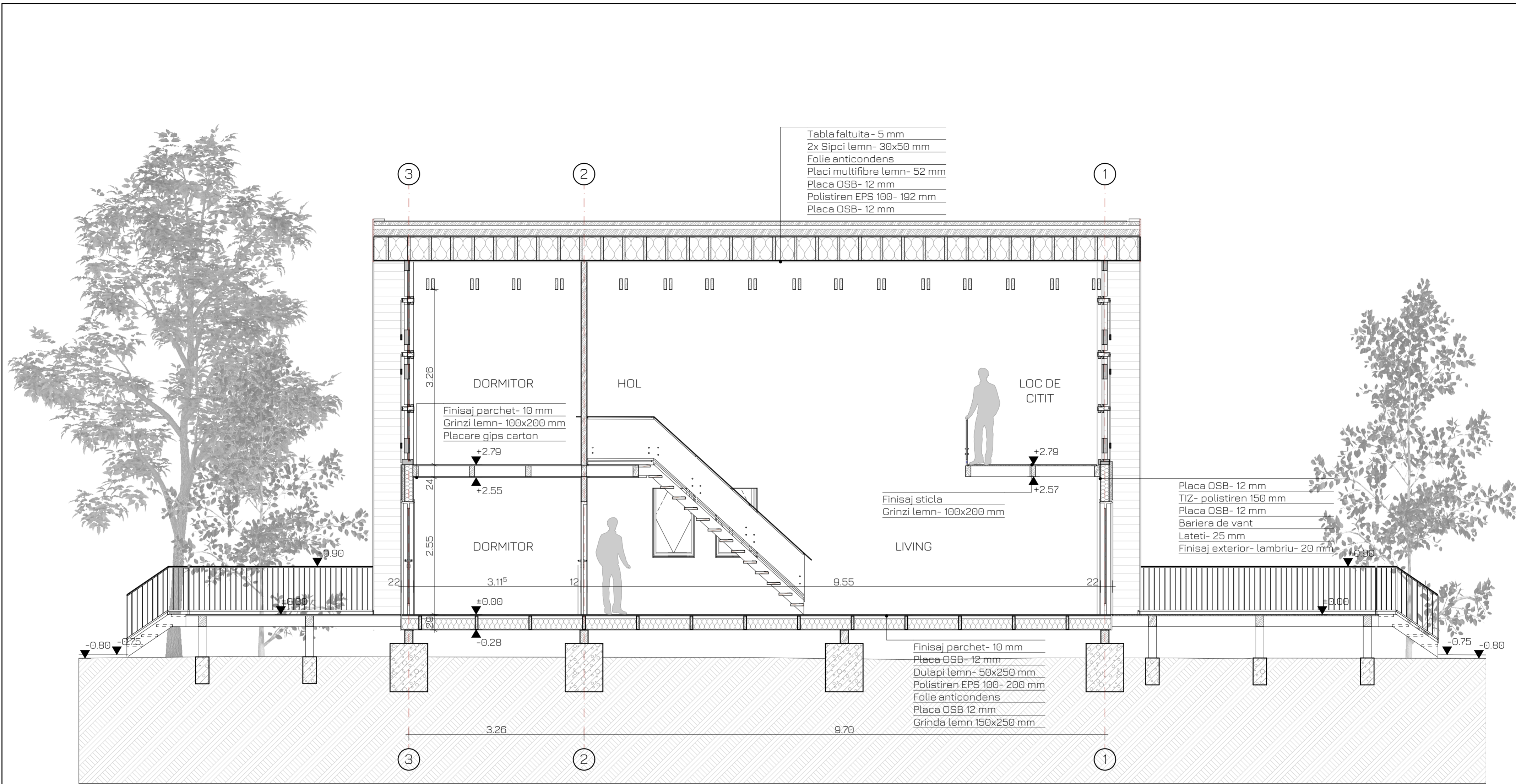
Camera	Suprafata
Hol	5,23 mp
Loc de citit	10,40 mp
Dormitor	9,52 mp
S. construit	43,94 mp
S. util	24,78 mp

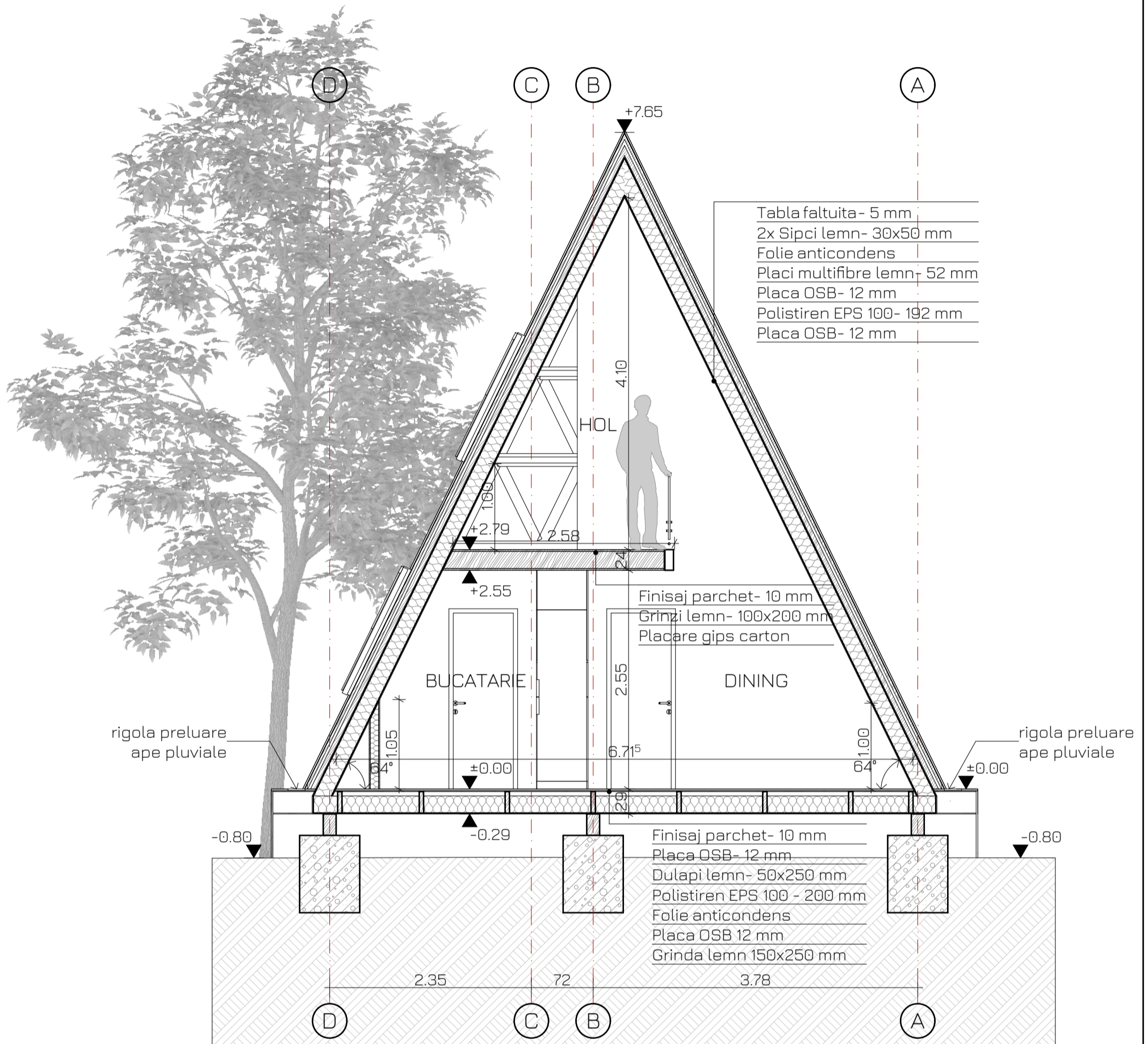


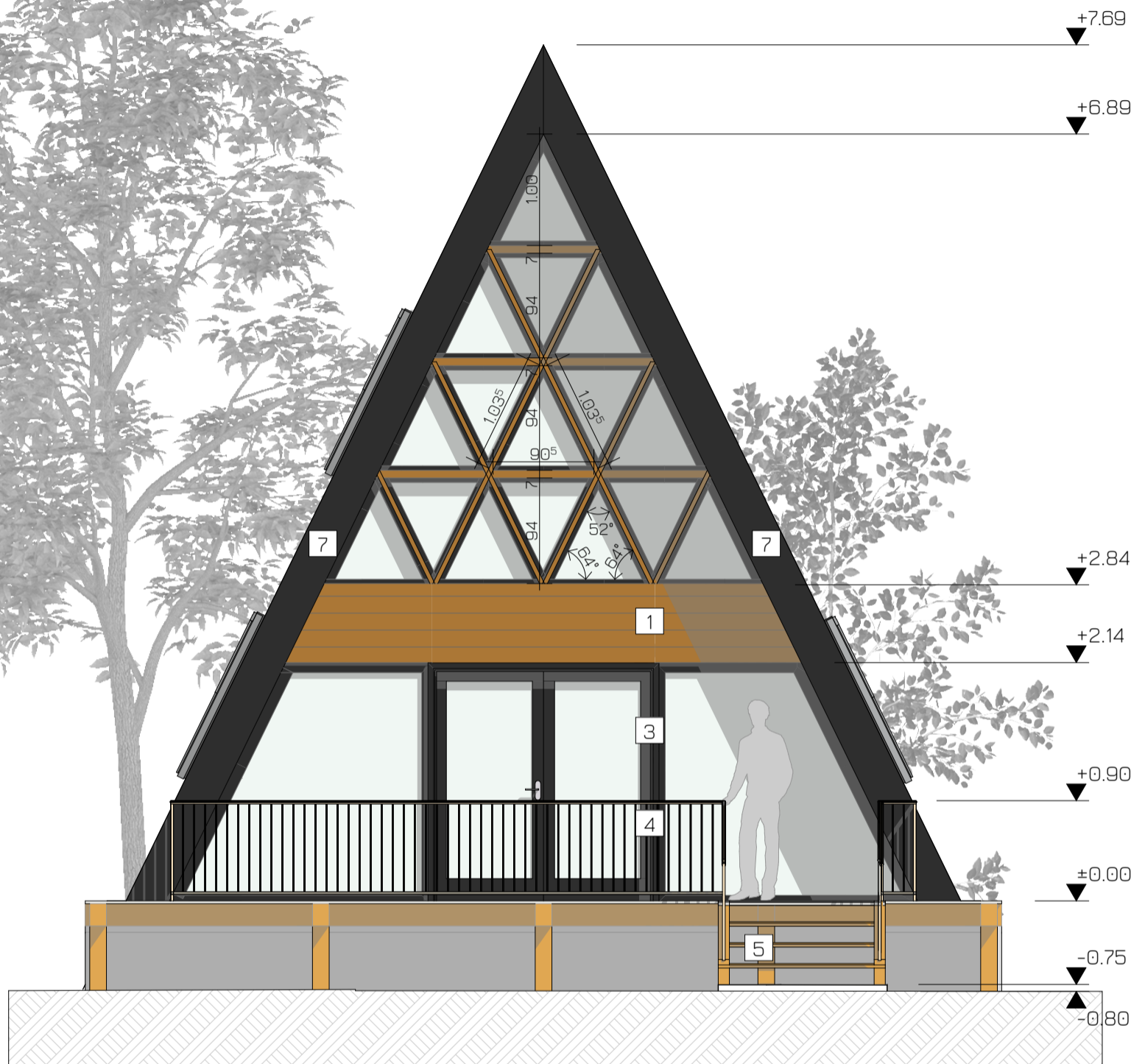
NOTA: Avand in vedere panta acoperisului de 64°, inaltimea spatiului util se ia in considerare de la inaltimea de 1,00 m in sus







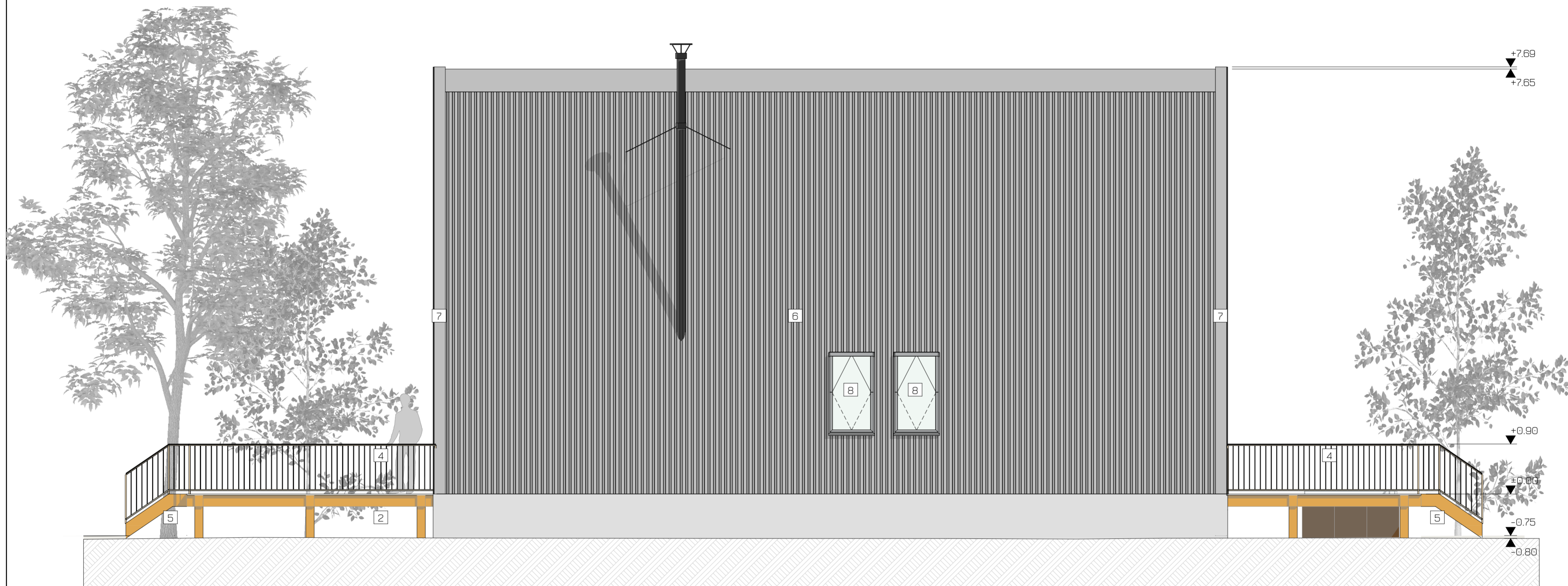




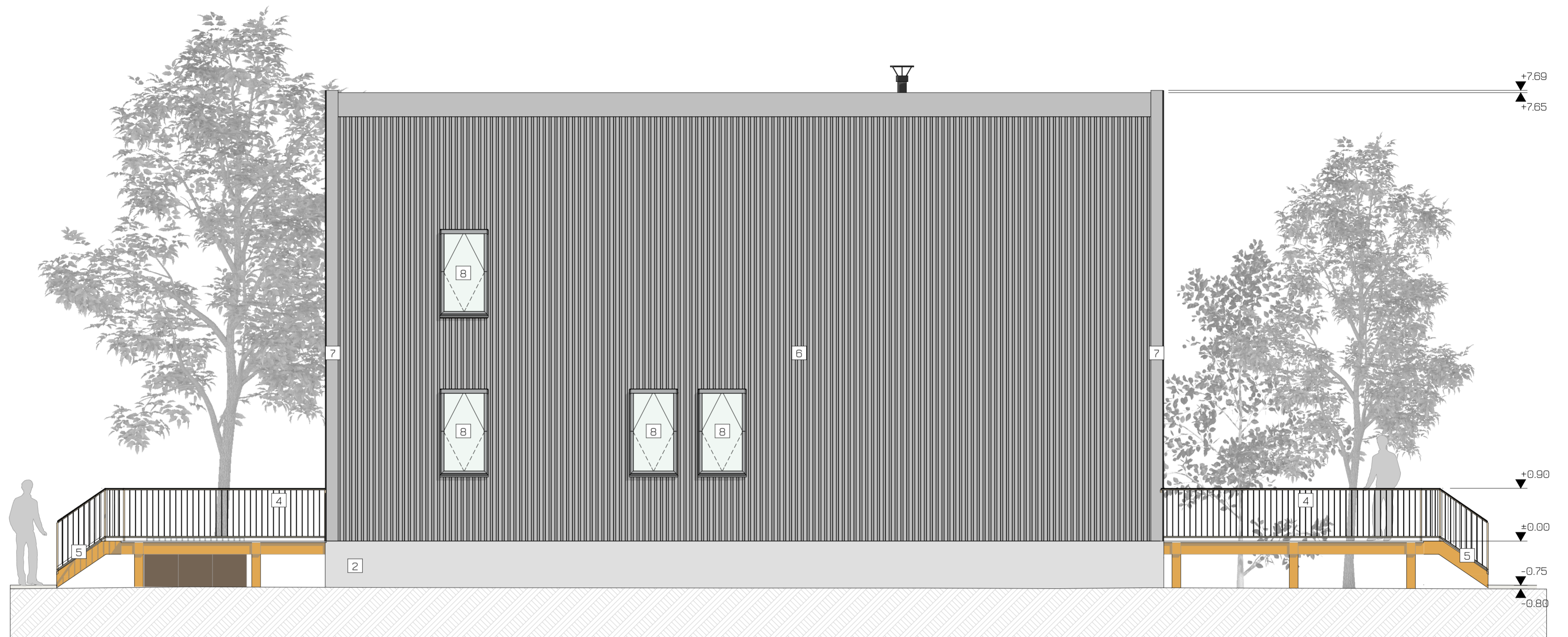
1. Finisaj- placare lemn
2. Finisaj soclu- placare piatra
3. Tamplarie PVC- culoare gri inchis
4. Balustrada metalica pentru protectie
5. Trepte acces
6. Invelitoare- tabla faltuita
7. Sort tabla zincata culoare gri inchis



1. Finisaj- placare lemn
2. Finisaj soclu- placare piatra
3. Tamplarie PVC- culoare gri inchis
4. Balustrada metalica pentru protectie
5. Trepte acces
6. Invelitoare- tabla faltuita
7. Sort tabla zincata culoare gri inchis



1. Finisaj- placare lemn
2. Finisaj soclu- placare piatra
3. Tamplarie PVC- culoare gri inchis
4. Balustrada metalica pentru protectie
5. Trepte acces
6. Invelitoare- tabla faltuita
7. Sort tabla zincata culoare gri inchis
8. Fereastra Velux



1. Finisaj- placare lemn
2. Finisaj soclu- placare piatra
3. Tamplarie PVC- culoare gri inchis
4. Balustrada metalica pentru protectie
5. Trepte acces
6. Invelitoare- tabla faltuita
7. Sort tabla zincata culoare gri inchis
8. Fereastră Velux