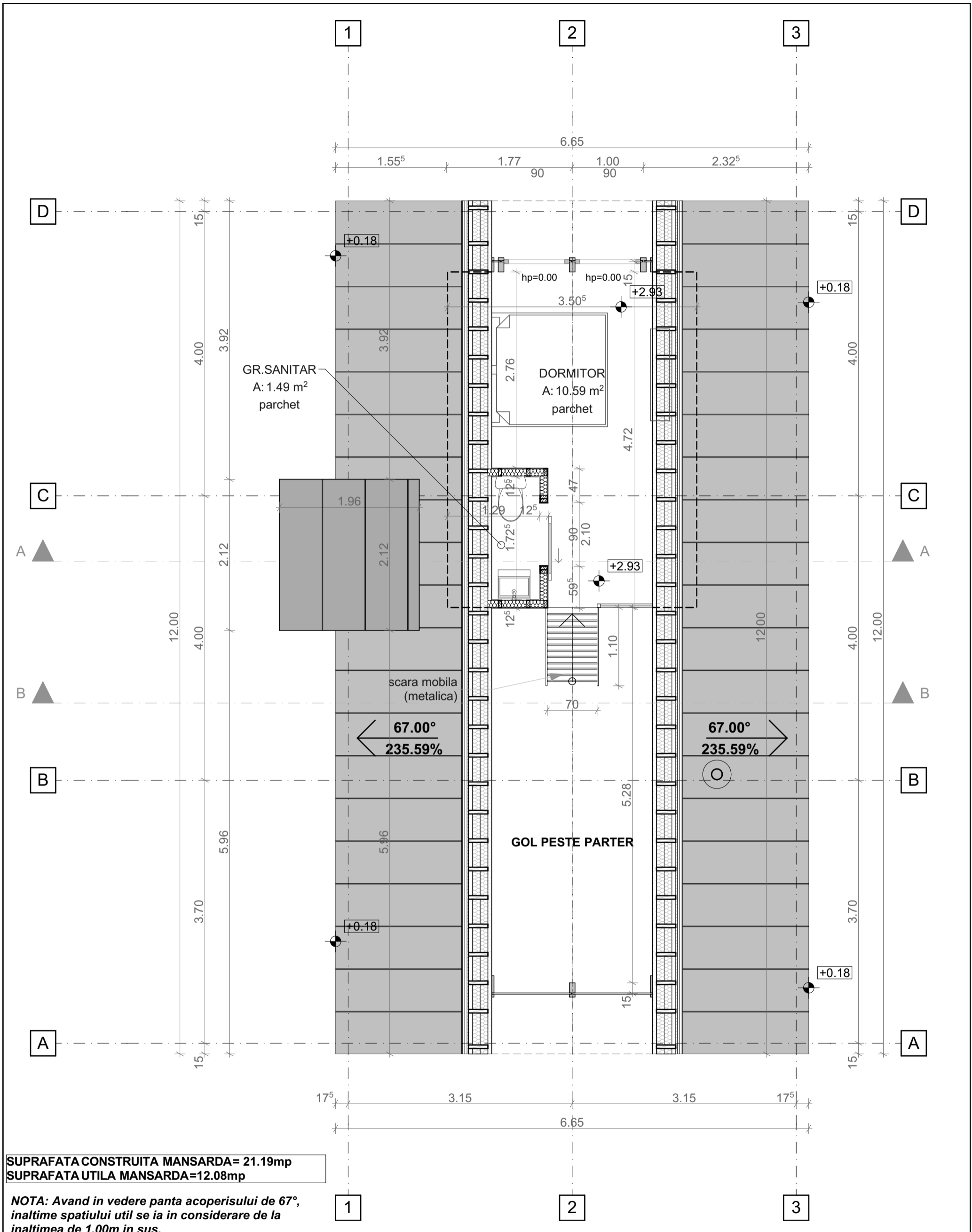


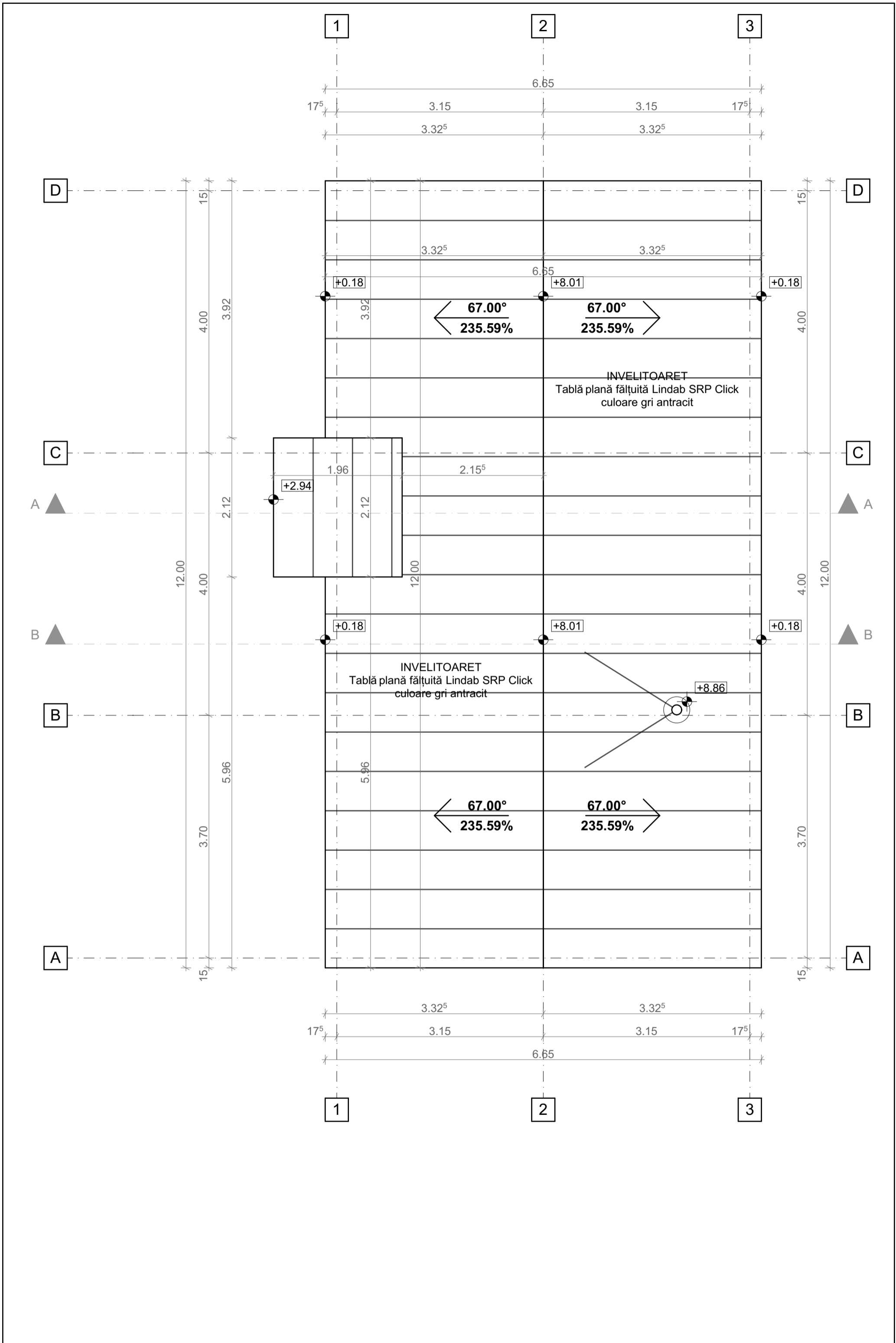
**SUPRAFATA CONSTRUITA PARTER= 81.49mp**  
**SUPRAFATA UTILA PARTER=50.08mp**

*NOTA: Avand in vedere panta acoperisului de 67°, inaltime spatiului util se ia in considerare de la inaltimea de 1,00m in sus.*



SUPRAFATA CONSTRUITA MANSARDA= 21.19mp  
 SUPRAFATA UTILA MANSARDA=12.08mp

NOTA: Avand in vedere panta acoperisului de 67°,  
 inaltime spatiului util se ia in considerare de la  
 inaltimea de 1,00m in sus.



1

2

3

6.65

17<sup>5</sup>

3.15

3.15

17<sup>5</sup>

3.32<sup>5</sup>

3.32<sup>5</sup>

D

15

15

D

3.32<sup>5</sup>

3.32<sup>5</sup>

+0.18

6.65

+8.01

+0.18

4.00

3.92

4.00

67.00°  
235.59%

67.00°  
235.59%

INVELITOARET  
Tablă plană fâltuită Lindab SRP Click  
culoare gri antracit

C

1.96

2.15<sup>5</sup>

C

A



+2.94

2.12

A



12.00

4.00

2.12

12.00

4.00

12.00

C

B



+0.18

+8.01

+0.18

B



INVELITOARET  
Tablă plană fâltuită Lindab SRP Click  
culoare gri antracit

+8.86

B

B

5.96

5.96

67.00°  
235.59%

67.00°  
235.59%

3.70

A

15

15

A

3.32<sup>5</sup>

3.32<sup>5</sup>

17<sup>5</sup>

3.15

3.15

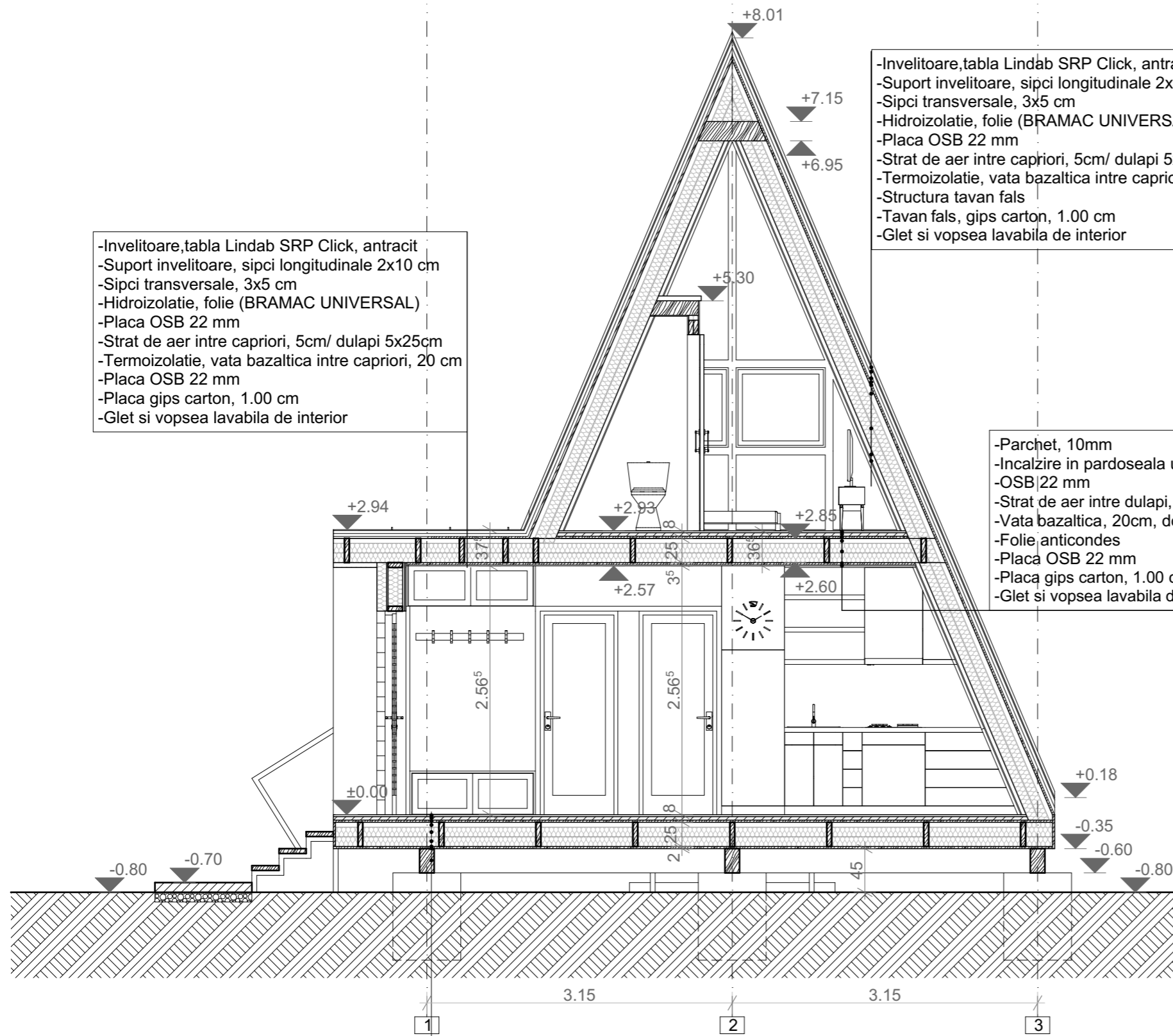
17<sup>5</sup>

6.65

1

2

3

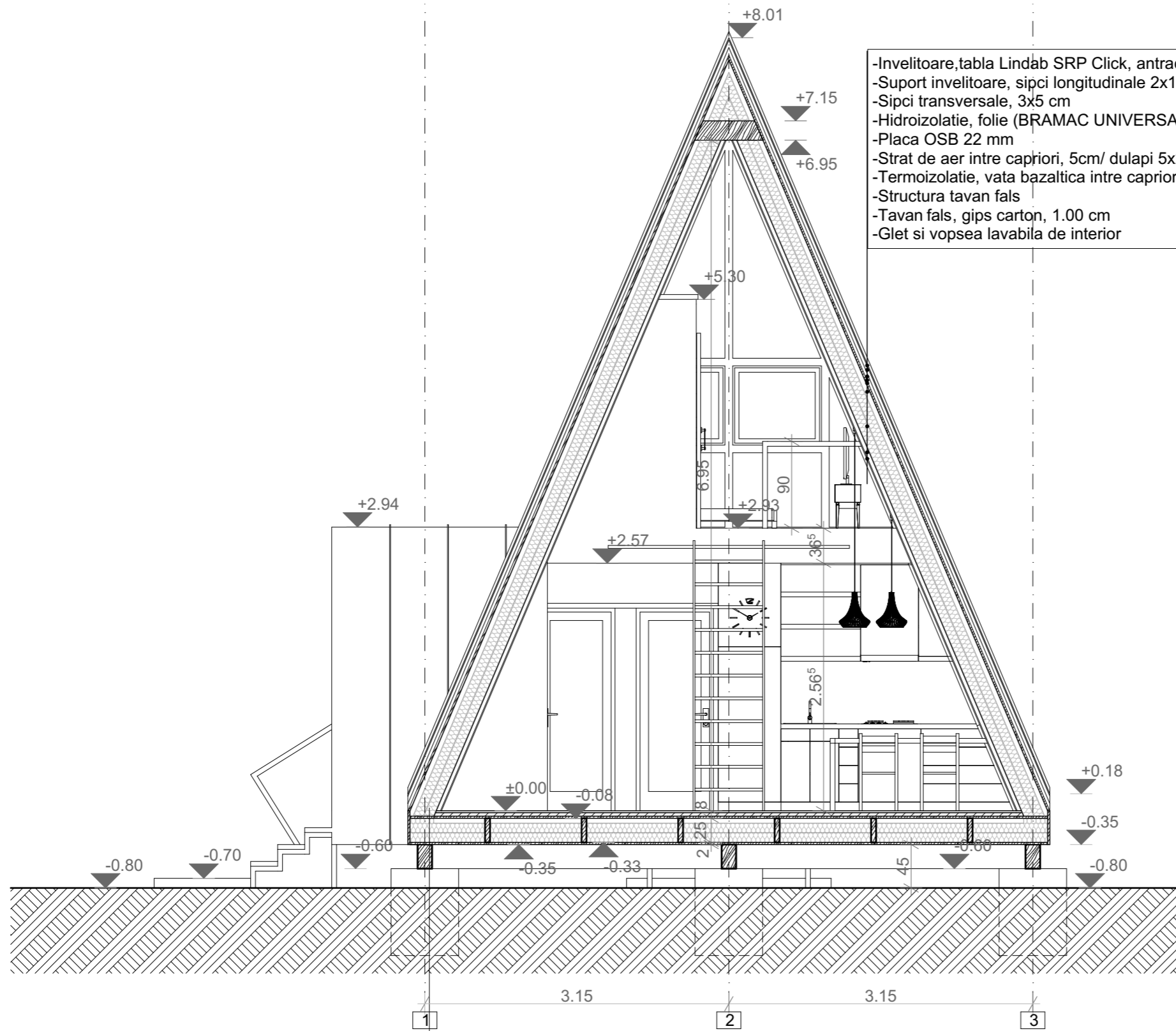


- Invelitoare, tabla Lindab SRP Click, antracit
- Suport invelitoare, sipci longitudinale 2x10 cm
- Sipci transversale, 3x5 cm
- Hidroizolatie, folie (BRAMAC UNIVERSAL)
- Placa OSB 22 mm
- Strat de aer intre capriori, 5cm/ dulapi 5x25cm
- Termoizolatie, vata bazaltica intre capriori, 20 cm
- Placa OSB 22 mm
- Placa gips carton, 1.00 cm
- Glet si vopsea lavabila de interior

- Invelitoare, tabla Lindab SRP Click, antracit
- Suport invelitoare, sipci longitudinale 2x10 cm
- Sipci transversale, 3x5 cm
- Hidroizolatie, folie (BRAMAC UNIVERSAL)
- Placa OSB 22 mm
- Strat de aer intre capriori, 5cm/ dulapi 5x25cm
- Termoizolatie, vata bazaltica intre capriori, 20 cm
- Structura tavan fals
- Tavan fals, gips carton, 1.00 cm
- Glet si vopsea lavabila de interior

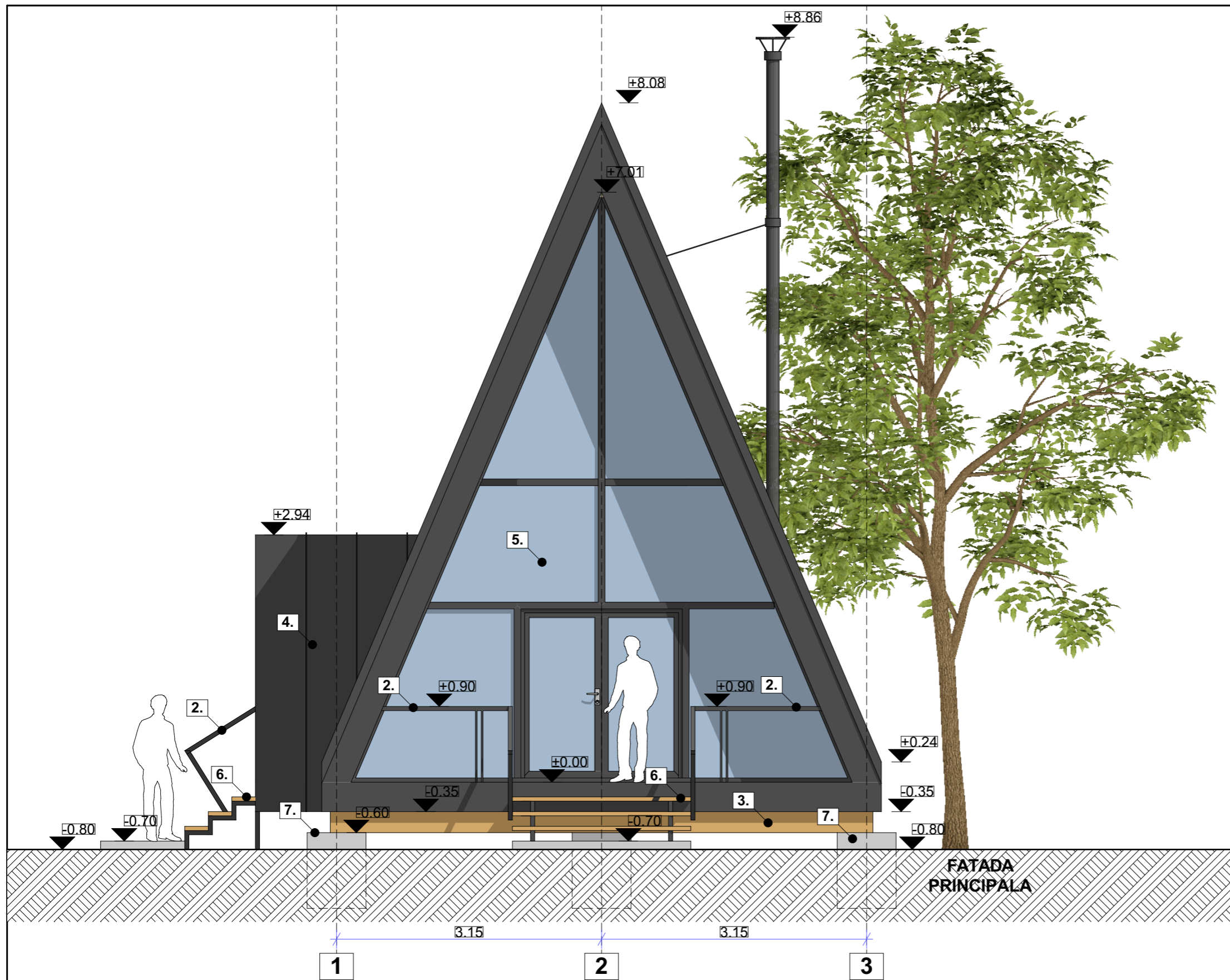
- Parchet, 10mm
- Incalzire in pardoseala uscata, Henco SLIM
- OSB 22 mm
- Strat de aer intre dulapi, 5cm/ dulapi 5x25cm
- Vata bazaltica, 20cm, doua straturi de 10cm
- Folie anticondes
- Placa OSB 22 mm
- Placa gips carton, 1.00 cm
- Glet si vopsea lavabila de interior

- Parchet, 10mm
- Incalzire in pardoseala uscata, Henco SLIM
- OSB 22 mm
- Dulapi 5x25
- Vata bazaltica, 10cm, doua straturi
- Folie anticondes
- Placa OSB 22 mm
- Grinda de lemn, 15x25cm

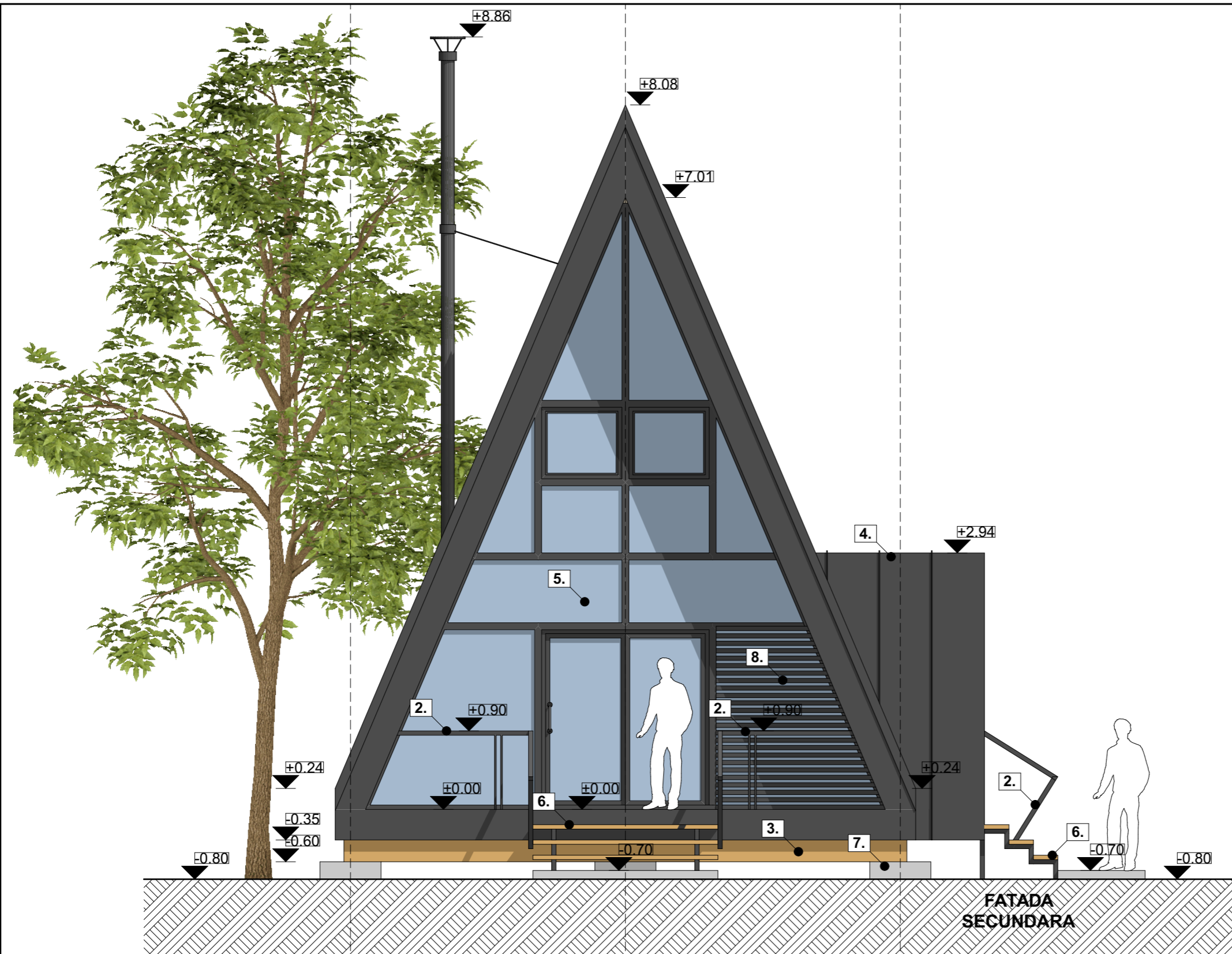


- Invelitoare, tabla Lindab SRP Click, antracit
- Suport invelitoare, sipci longitudinale 2x10 cm
- Sipci transversale, 3x5 cm
- Hidroizolatie, folie (BRAMAC UNIVERSAL)
- Placa OSB 22 mm
- Strat de aer intre capriori, 5cm/ dulapi 5x25cm
- Termoizolatie, vata bazaltica intre capriori, 20 cm
- Structura tavan fals
- Tavan fals, gips carton, 1.00 cm
- Glet si vopsea lavabila de interior

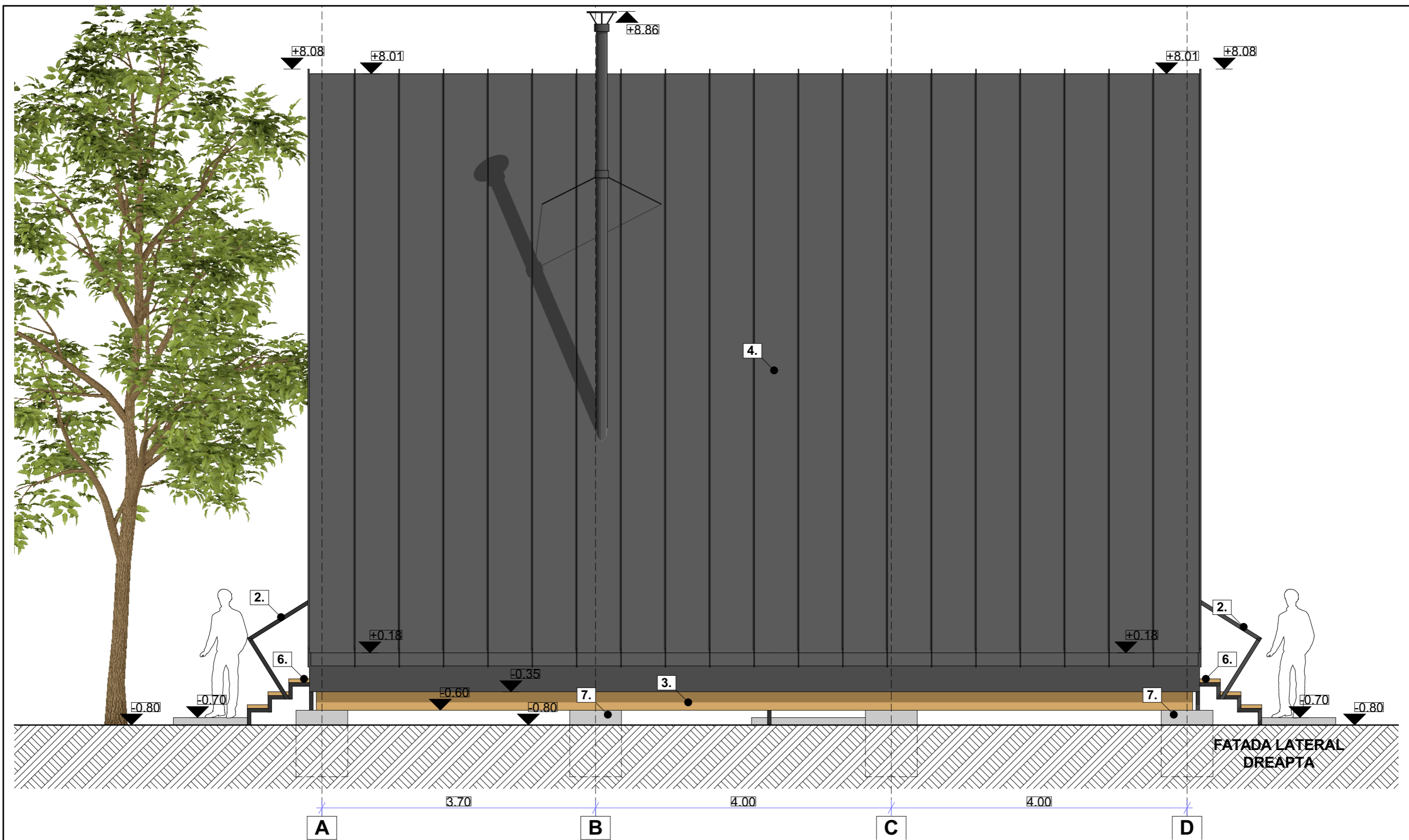
- Parchet, 10mm
- Incalzire in pardoseala uscata, Henco SLIM
- OSB 22 mm
- Dulapi 5x25
- Vata bazaltica, 10cm, doua straturi
- Folie anticondes
- Placa OSB 22 mm
- Grinda de lemn, 15x25cm



1. PLAVCAJ SIPCI DE LEMN
2. BALUSTRADA TEAVA METALICA, ANTRACIT
3. GEINZI DE LEMN
4. TABLA FALTUITA LINDAB SRP CLICK
5. PERETE CORTINA, ALUMINIU, CULOARE ANTRACIT
6. TREPTE DE LEMN
7. BETON ARMAT
8. SIPCI DE LEMN VOPSITE GRI

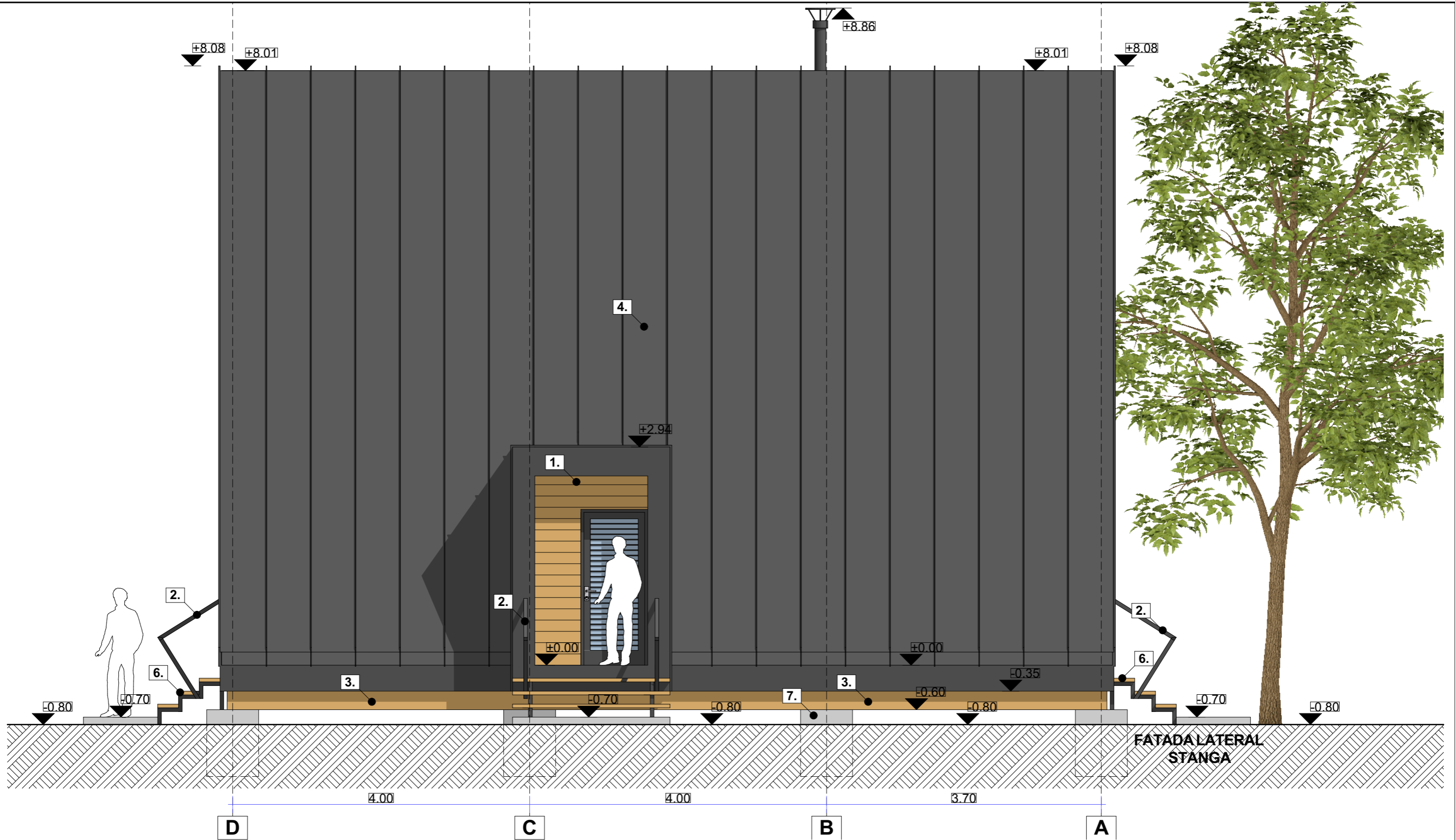


1. PLAVCAJ SIPCI DE LEMN
2. BALUSTRADA TEAVA METALICA, ANTRACIT
3. GEINZI DE LEMN
4. TABLA FALTUITA LINDAB SRP CLICK
5. PERETE CORTINA, ALUMINIU, CULOARE ANTRACIT
6. TREPTE DE LEMN
7. BETON ARMAT
8. SIPCI DE LEMN VOPSITE GRI



1. PLAVCAJ SIPCI DE LEMN
2. BALUSTRADA TEAVA METALICA, ANTRACIT
3. GEINZI DE LEMN
4. TABLA FALTUITA LINDAB SRP CLICK
5. PERETE CORTINA, ALUMINIU, CULOARE ANTRACIT
6. TREPTE DE LEMN
7. BETON ARMAT
8. SIPCI DE LEMN VOPSITE GRI





1. PLAVCAJ SIPCI DE LEMN
2. BALUSTRADA TEAVA METALICA, ANTRACIT
3. GEINZI DE LEMN
4. TABLA FALTUITA LINDAB SRP CLICK
5. PERETE CORTINA, ALUMINIU, CULOARE ANTRACIT
6. TREPTE DE LEMN
7. BETON ARMAT
8. SIPCI DE LEMN VOPSITE GRI