

LEDA

TIPPING CONTAINERS




CUTING


BENDING


WELDING


COATING

CONTACT

Adress

Phone & Fax

Online

Plitochnaya street №2
Kharkov, Ukraine, 61070

Tel.: +38 (057) 714-17-74

e-mail: info@ledasteel.eu

Leda LLC is a successfully managed family-owned business with more than 10 years of experience in developing and manufacturing industry specific metal solutions.

Leda offers its customers top expertise in product development in the metal industry. A skilled team of engineers and manpower with state-of-the-art machinery offer room for imagination. We manufacture small, large, simple or complex solutions for our customers.

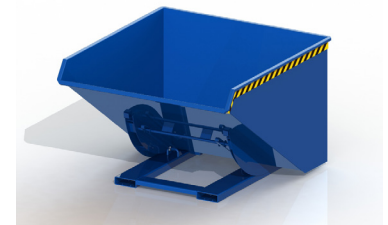
We are ready to manufacture metal solutions tailored to your business needs. We develop, plan and execute customized and cost-effective product solutions that serve the interest of your business.

TIPPING CONTAINERS

Leda LLC offers a wide range of self tipping containers; our tipping containers (skips) are manufactured to ease the process of waste and material collection.

Useful information:

- Our tipping containers can be emptied from any height by cable.
- Suitable for use with most forklifts.
- Secured to avoid slipping.
- Wheels, lids and automatic tipping device can be added.
- All models are available with different surface treatment (powder coating, painting, hot-dip galvanization etc.).



VSC scissor containers

The VSC is the scissor mechanism working container. Suitable for handling big bulk wastes and material. base frame and container are connected by means of a sturdy connecting arm, which ensures optimal tilting

- Cable manual opening
- Finish: RAL 5010 anti-rust powder paint coating
- Ideal to sort and collect all different types of waste material.
- Option to add 4 wheels
- Supplied with: + nylon cable, to be fixed to the bucket lever, which allows manual opening of the bucket without getting off the cart + steel chain to be attached to the cart to secure handling of the bucket



Name	Volume, L	Weight, Kg	Dimensions (LxWxH)	Load capacity, Kg
VSC-50	500	100	1577x973x764	1400
VSC-75	750	122	1577x1343x764	1200
VSC-100	1000	148	1579x1722x764	1600

VUC Universal Container

The VUC Universal Container is a robust steel tilting skip with reduced height: max 1 m, facilitates the filling of the skip

- Total tilting at 90 °
- Cable manual opening and closing with a tension spring
- Finish: RAL 5010 anti-rust powder paint coating
- Ideal to sort and collect all different types of waste material.
- Option to add 4 wheels
- Supplied with: + nylon cable, to be fixed to the bucket lever, which allows manual opening of the bucket without getting off the cart + steel chain to be attached to the cart to secure handling of the bucket



Name	Volume, L	Weight, Kg	Dimensions (LxWxH)	Load capacity, Kg
VUC-15	150	61	1210x747x419	1100
VUC-25	250	69	1210x1047x419	1100
VUC-30	300	76	1393x780x577	1300
VUC-50	500	90	1648x812x727	1300
VUC-75	750	141	1627x1162x727	1500
VUC-100	1000	169	1707x1282x727	1800
VUC-125	1250	189	1774x1282x907	1800
VUC-150	1500	203	1774x1482x907	1800

VS shovel containers

Robust construction: reinforced sides thickness from 4 to 5 mm, base thickness 6 mm

- Ideal for transporting and handling gravel, sand, shavings, granules or snow masses...
- Specially designed to slide easily under loose materials
- Supplied with: + steel chain: to be attached to the forklift, to secure handling of the bucket + nylon cable: to be attached to the driver's seat for manual opening of the bucket



Name	Volume, L	Weight, Kg	Dimensions (LxWxH)	Load capacity, Kg
VS-50	500	190	1455x1130x567	2200
VS-75	750	212	1455x1390x567	2200
VS-100	1000	272	1740x1640x567	2000

VMC Manual Containers

Steel, mobile and light tipping skip for manual use (closing of the manual skip)

- Suitable for light loads: maximum 600kg
- Easy handling thanks to the handle on the back and the 3 rubber wheels (2 fixed and 1 swivel at the back)
- Price includes 3 wheels: 2 fixed – 1 swiveling
- Finish: RAL 5010 anti-rust powder paint coating
- Supplied with: + nylon cable to be fixed to the bucket lever, which allows manual opening of the bucket + steel chain to be attached to the trolley to secure handling of the bucket



Name	Volume, L	Weight, Kg	Dimensions (LxWxH)	Load capacity, Kg
VMC-25	250	62	1444x731x780	600
VMC-40	400	75	1444x920x938	600
VMC-60	600	89	1564x1030x1058	600
VMC-80	800	120	1773x1030x1168	600
VMC-100	1000	153	1773x1230x1168	600

VBB Drop Bottom Containers

Drop Bottom robust steel container with up to 1500kg load capacity and stackable

- Smooth opening from the bottom thanks to a tension spring
- Suitable for metal, glass, wood, debris. Collecting, storing and transporting.
- Easy movement with forklift, crane or pallet truck
- Finish: RAL 5010 anti-rust powder paint coating
- Optional to add 4 wheels
- Supplied with: + nylon cable to be fixed to the bucket lever, which allows manual opening of the bucket without getting off the cart + steel chain to attach to the cart to secure handling of the bucket



Name	Volume, L	Weight, Kg	Dimensions (LxWxH)	Load capacity, Kg
VBB-50	500	136	1391x932x764	2000
VBB-75	750	143	1338x923x1034	1000
VBB-100	1000	197	1338x917x1294	1000
VBB-130	1300	237	1704x917x1294	1200
VBB-150	1500	261	1974x917x1294	1200
VBB-200	2000	324	2574x917x1294	1500

AMC Automatic Containers

The AMC has both an automatic and manual opening mechanism. Robust, maneuverable and durable steel self-tipping skip

- Automatic opening thanks to a pressure plate at the front base of the container
- Ultimate solution for collecting and transporting all kinds of bulk goods.
- Tension spring at the base allows automatic closing
- Finish: RAL 5010 anti-rust powder paint coating
- Optional to add wheels
- Supplied with: + nylon cable to be fixed to the bucket lever, which allows manual opening of the bucket without getting off the cart + steel chain to attach to the cart to secure handling of the bucket



Name	Volume, L	Weight, Kg	Dimensions (LxWxH)	Load capacity, Kg
AMC-300	300	99	1260x860x825	1000
AMC-600	600	141	1580x976x995	1200
AMC-900	900	163	1580x1386x995	1500
AMC-1100	1100	186	1730x1417x1165	1500
AMC-1600	1600	242	2190x1286x1372	2000
AMC-2500	2500	320	2190x1936x1372	2000

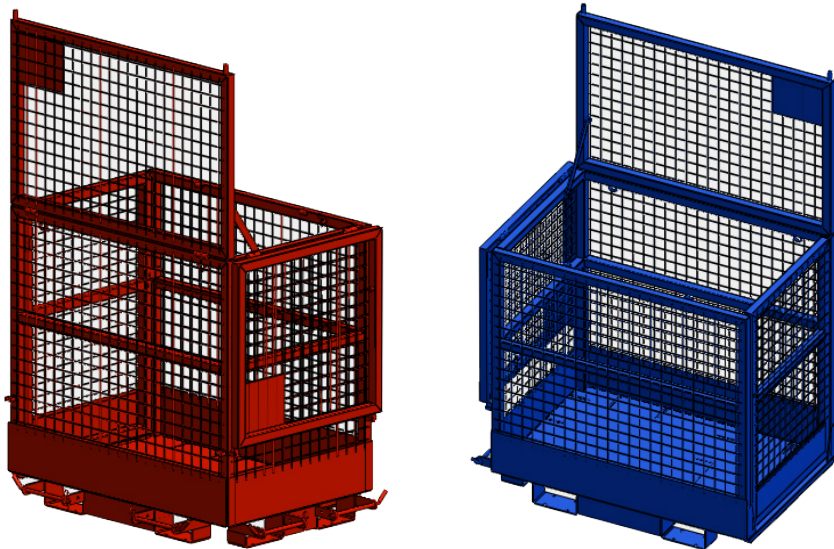
WP 300 Working Platform

The working platform is a solid steel structure made of hollow and rolling sections.

As a protective device for the people inside, there is a folding wall with a latch.

For the safety usage with forklift, pockets are protected with a cotter pin and chain is provided.

- Two forklift entry pockets: wide and narrow side
- Two protection covers: wide and narrow side
- Identification plate
- Wire mesh 50x50
- Working platform door with locking device.
- Finish: RAL 5010 anti-rust powder paint coating



Name	Weight, Kg	Dimensions (LxWxH)	Load capacity, Kg
WP 300	140	1577x973x764	1400

VRB Retention Barrels

The VRB has a robust steel structure with a hot dip galvanized wire mesh cover.

Welded inside out to avoid leakage.

- Suitable for different types of barrels and oily/liquid material
- Finish: RAL 5010 anti-rust powder paint coating
- Wire mesh: Flat bar X wire rod hot dip galvanized



Name	Volume, L	Number of Barrels	Weight, Kg	Dimensions (LxWxH)
VRB-50	70	1	40	620x620x280
VRB-100	140	122	55	1220x620x280
VRB-200	270	148	90	1220x1220x280

ALL OUR PRODUCTS ARE CERTIFIED

