



## Pipes localization

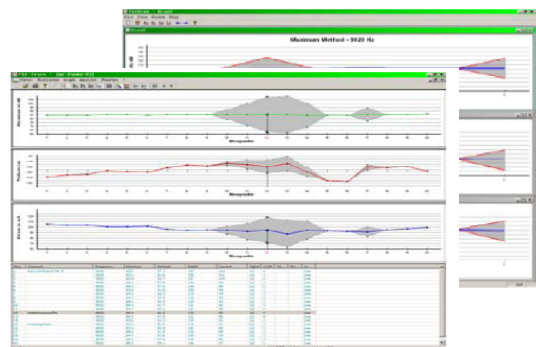
In order to identify the underground route and depth of the pipes or of the electrical cables, we use the electro-magnetic method, very efficient in this type of works. The method is applicable for a investigation depth of 6-8 m.



This is one of the few methods used in industrial environment, where the extern perturbation factors are significant and the concrete surfaces are not allowing the application of other methods.

Among the types of pipes and cables that can be detected we name:

- **Electrical high or low tension cables**
- **Gas or rock oil base lines**
- **Water pipes**
- **Sewage pipes**
- **Telephonic cables**
- **Gas pipes**
- **TV cable**



Using complementary instruments and transmitter for the main device, the methods can be also applicable for the identification of the plastic material pipes or of the concrete pipes.

