



## Geotechnical investigations

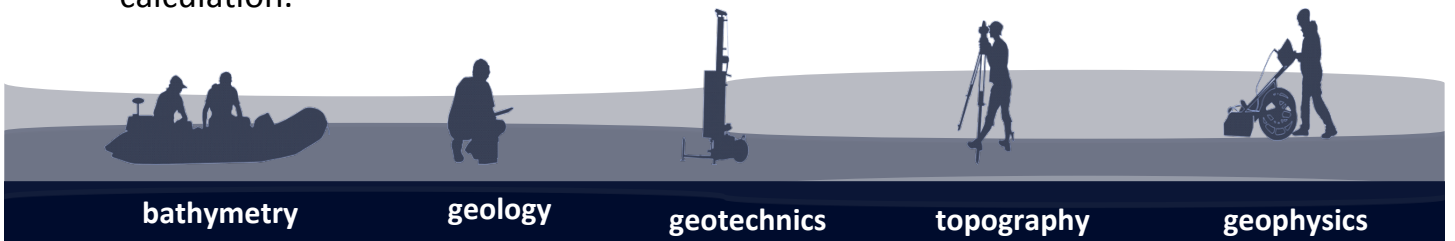
Represent the first stage of the construction or strengthening of a target. This kind of investigation gives information about soil structure and consistence, phreatic level and formulates recommendations for the technical project.



- **Geotechnical drillings**
- **Dynamic penetration tests**
- **Foundation uncover**
- **Plate tests**
- **Sampling**
- **Laboratory tests**
- **Elaboration of the documentation**



The geological structure and the physical-mechanical characteristics of the earth play an important role in designing buildings. Using direct methods (open digging, drilling, sampling for laboratory tests etc.), and indirect methods (geophysical methods), determination of these characteristics is done with high precision. This method helps to perform resistance and economical calculation.



**bathymetry**

**geology**

**geotechnics**

**topography**

**geophysics**